

1801 Broadway  
Suite 500  
Denver, Colorado 80202



Allison Linz  
Regulatory Technician  
Tel: 303.398.0355  
E-mail: alinz@gwogco.com

May 19, 2015

Colorado Oil and Gas Conservation Commission  
1120 Lincoln Street, Suite 801  
Denver, Colorado 80203

RE: **Proposed Wellbore Spacing Unit**  
Simpson FD 15-019HN

Niobrara New Drill  
Township 6 North, Range 67 West, 6<sup>th</sup> P.M.  
SENE Section 15  
Weld County, Colorado

Dear Director:

Great Western Operating Company, LLC is planning to drill the above captioned well in accordance with the provisions of COGCC Rule 318A.e.

Great Western proposed wellbore spacing unit consists of:

- **Sec 10: S/2S/2, Sec 15 N/2N/2**
- **320 Acres**

The 30 day notification time period has passed and we have not received any objections to such well locations or proposed spacing unit, therefore Great Western hereby requests the Director to approve the above mentioned well. Great Western Operating Company, LLC respectfully requests that the COGCC review the enclosed map illustrating the proposed wellbore spacing unit.

Respectfully,

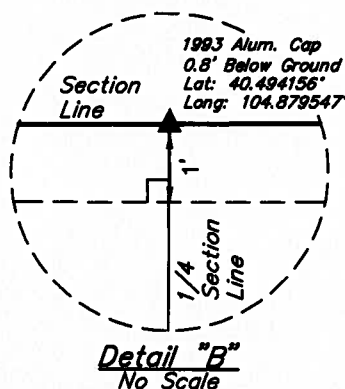
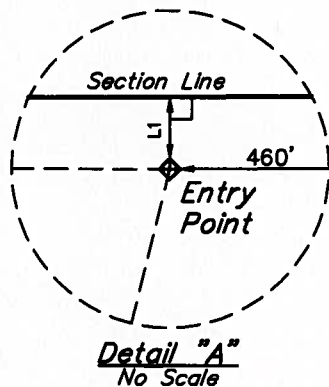
*Allison Linz*

Allison Linz  
Regulatory Technician  
Great Western Operating Company, LLC

# LEGEND:

- = 90° SYMBOL
- = PROPOSED WELLHEAD.
- ◆ = ENTRY POINT
- = TARGET BOTTOM HOLE.
- ▲ = SECTION CORNERS LOCATED.

LINE TABLE		
LINE	DIRECTION	LENGTH
L1	N00°47'26"W	1.15'
L2	N00°46'58"W	1.15'



PDOP = 1.4

NAD 83 (TARGET BOTTOM HOLE)	
LATITUDE = 40°29'38.81" (40.494114)	
LONGITUDE = 104°53'14.03" (104.887231)	
NAD 27 (TARGET BOTTOM HOLE)	
LATITUDE = 40°29'38.88" (40.494133)	
LONGITUDE = 104°53'12.13" (104.886703)	
NAD 83 (ENTRY POINT)	
LATITUDE = 40°29'39.08" (40.494189)	
LONGITUDE = 104°52'18.43" (104.871786)	
NAD 27 (ENTRY POINT)	
LATITUDE = 40°29'39.14" (40.494206)	
LONGITUDE = 104°52'16.53" (104.871258)	

NAD 83 (SURFACE LOCATION)	
LATITUDE = 40°29'18.93" (40.488592)	
LONGITUDE = 104°52'27.44" (104.874289)	
NAD 27 (SURFACE LOCATION)	
LATITUDE = 40°29'19.00" (40.488611)	
LONGITUDE = 104°52'25.54" (104.873761)	

**BASIS OF BEARINGS**  
BASIS OF BEARINGS IS A G.P.S. OBSERVATION

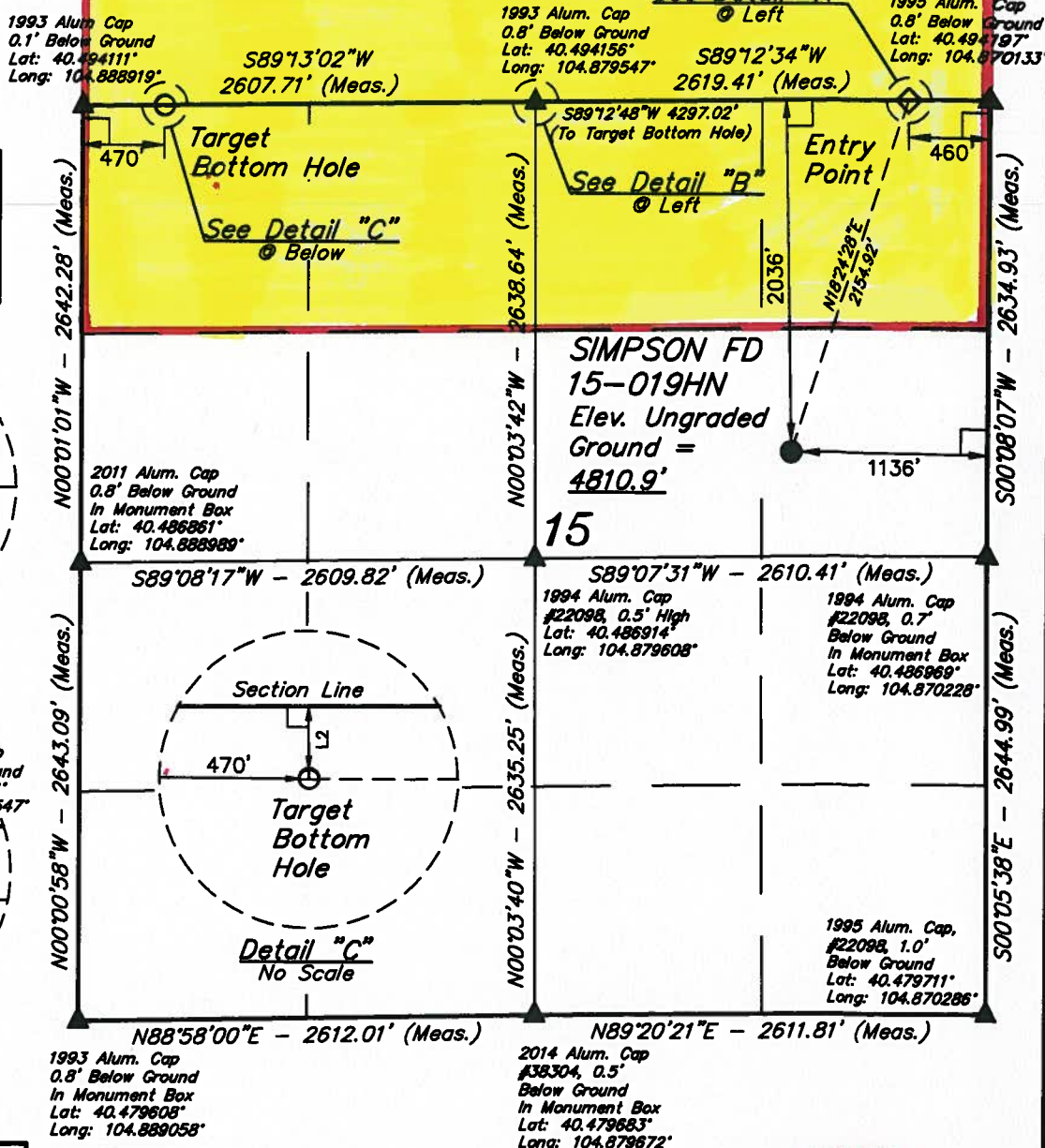
**BASIS OF ELEVATION**  
USGS COOPERATIVE BASE NETWORK CONTROL STATION, DESIGNATION "VERMILYEA". NGS DATA SHEET LISTS THE NAVD 88 ELEVATION AS BEING 5026 FEET.



**UELS, LLC**  
Corporate Office \* 85 South 200 East  
Vernal, UT 84078 \* (435) 789-1017



**T6N, R67W, 6th P.M.**



**CERTIFICATE**  
THIS IS TO CERTIFY THAT THE ABOVE PLAT WAS PREPARED FROM FIELD NOTES OF ACTUAL SURVEYS MADE BY ME OR UNDER MY SUPERVISION, AND THAT THE SAME ARE TRUE AND CORRECT TO THE BEST OF MY KNOWLEDGE AND BELIEF.

REGISTERED LAND SURVEYOR  
REGISTRATION NO. 28285  
STATE OF COLORADO  
JULY 15, 2015

**GREAT WESTERN OIL & GAS COMPANY**

**SIMPSON FD 15-019HN**  
**SE 1/4 NE 1/4, SECTION 15, T6N, R67W, 6th P.M.**  
**WELD COUNTY, COLORADO**

SURVEYED BY: DALLAS NIELSEN, D.W.	DATE: 03-13-15
DRAWN BY: J.W.	DATE DRAWN: 12-29-14
SCALE: 1" = 1000'	REVISED: 03-16-15 J.S.

**WELL LOCATION PLAT**