

1801 Broadway  
Suite 500  
Denver, Colorado 80202



Allison Linz  
Regulatory Technician  
Tel: 303.398.0355  
E-mail: alinz@gwogco.com

May 19, 2015

Colorado Oil and Gas Conservation Commission  
1120 Lincoln Street, Suite 801  
Denver, Colorado 80203

RE: **Proposed Wellbore Spacing Unit**  
Simpson FD 16-039HC

Codell New Drill  
Township 6 North, Range 67 West, 6<sup>th</sup> P.M.  
SENE Section 15  
Weld County, Colorado

Dear Director:

Great Western Operating Company, LLC is planning to drill the above captioned well in accordance with the provisions of COGCC Rule 318A.e.

Great Western proposed wellbore spacing unit consists of:

- **Sec 15: W/2, NE/4; Sec 16: ALL**
- **1120 Acres**

The 30 day notification time period has passed and we have not received any objections to such well locations or proposed spacing unit, therefore Great Western hereby requests the Director to approve the above mentioned well. Great Western Operating Company, LLC respectfully requests that the COGCC review the enclosed map illustrating the proposed wellbore spacing unit.

Respectfully,

*Allison Linz*

Allison Linz  
Regulatory Technician  
Great Western Operating Company, LLC

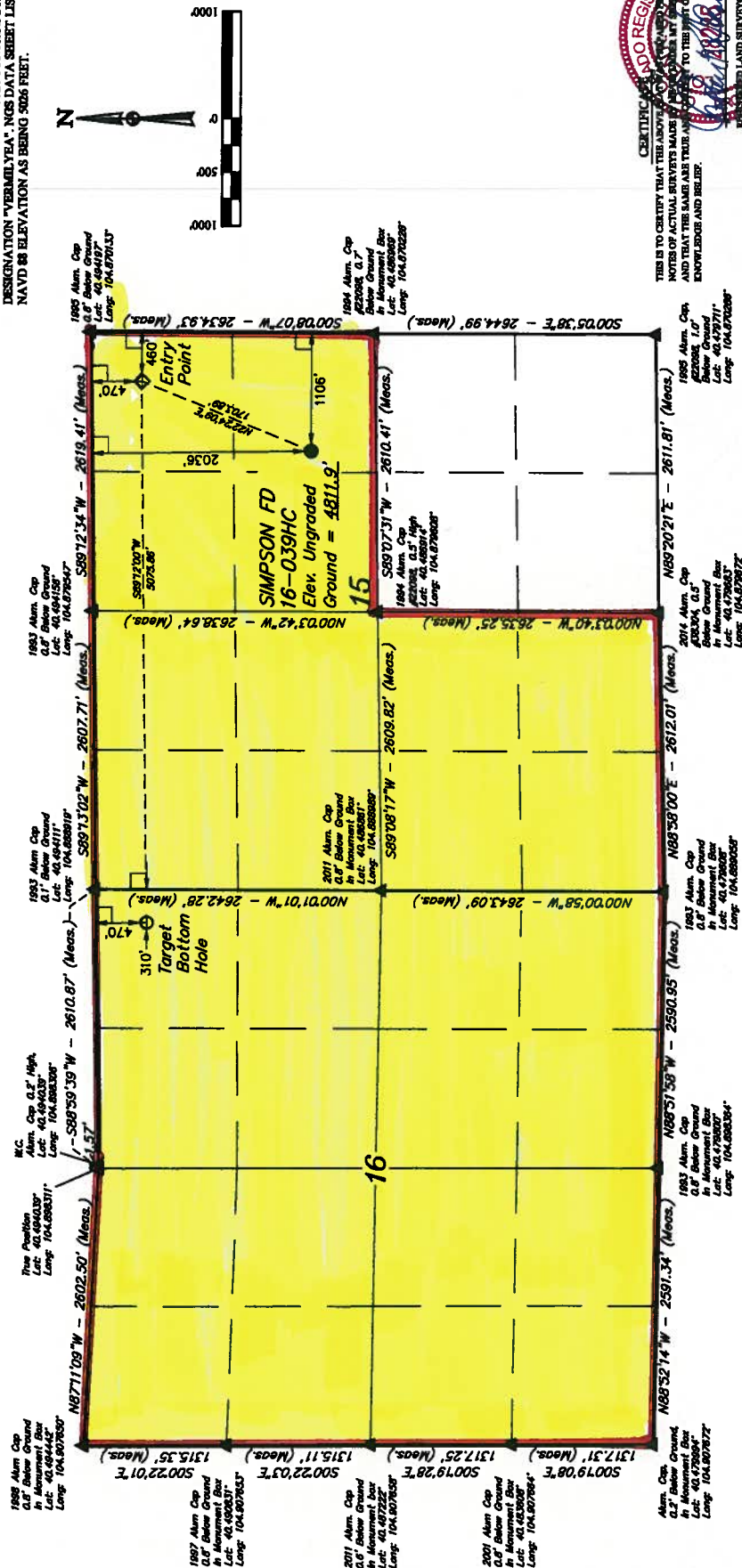
**GREAT WESTERN OIL & GAS COMPANY**

SIMPSON FD 16-039HC  
SE 1/4 NE 1/4, SECTION 15, T6N, R67W, 6th P.M.  
WELD COUNTY, COLORADO

## BASES OF BEARINGS

## **BASIS OF BEARINGS IS A G.P.S. OBSERVED BASIS OF ELEVATION**

USCS COOPERATIVE BASE NETWORK CONTROL STATION,  
DESIGNATION "VERMILYEA". NGS DATA SHEET LISTS THE  
NAVD 88 ELEVATION AS BEING 5026 FEET.



CERTIFICATE OF LAND SURVIVORS  
 OF THE ABOVE NAMED LAND  
 IT'S MADE BY THE COURT OF  
 TRUST AND TO THE BEST OF  
 1948  
 REGISTERED LAND SURVIVORS  
 HENRY JOHN NO. 2025  
 STATE OF CALIFORNIA  
 15



**UELS, LLC**  
Corporate Office • 85 South 200 East  
Vernal, UT 84078 • (435) 789-1817

**PN02 - 13**

[illegible]

SECTION CORNERS LOCATED.  
SECTION CORNERS RE-ESTABLISHED.  
(Not Set on Ground)

**LEGEND:**

**90° SYMBOL**

● = PROPOSED WELLHEAD.

**Q** - TARGET BOTTLE

- ENTRY POINT
- SECTION CHAIRS LOCATED

SECTION CORNERS RE-ESTABLISHED.