

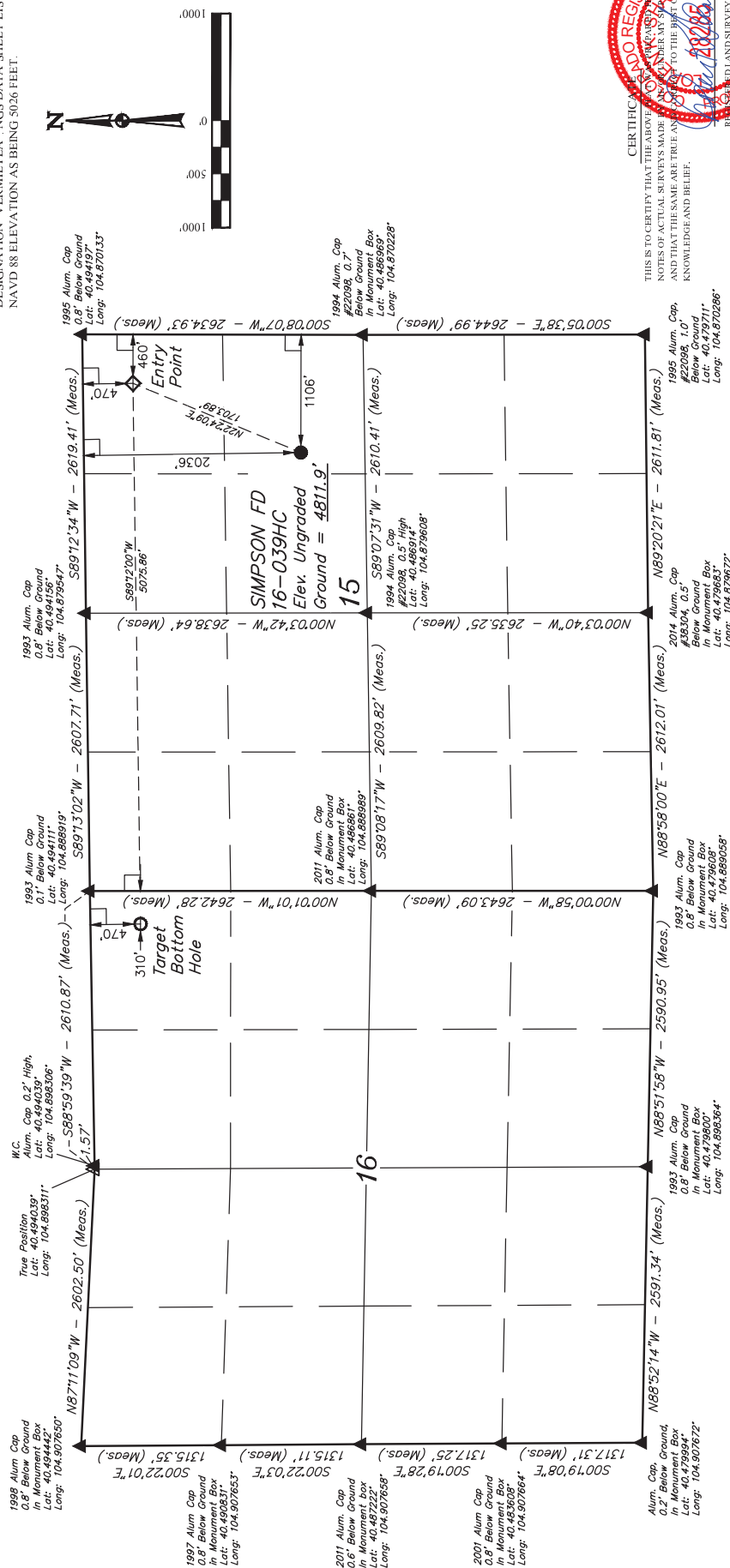
GREAT WESTERN OIL & GAS COMPANY

SIMPSON FD 16-039HC
SE 1/4 NE 1/4, SECTION 15, T6N, R67W, 6th P.M.
WELD COUNTY, COLORADO

BASIS OF BEARINGS

BASIS OF ELEVATION

USGS COOPERATIVE BASE NETWORK CONTROL STATION,
DESIGNATION "VERMILYEA", NGS DATA SHEET LISTS THE
NAVD 88 ELEVATION AS BEING 5026 FEET.



CERTIFICATE

THIS IS TO CERTIFY THAT THE ABOVE NAME HAS PROVIDED THE FOLLOWING
NOTES OF ACTUAL SURVEYS MADE BY HIMSELF UNDER MY SUPERVISION
AND THAT THE SAME ARE TRUE AND CORRECT TO THE BEST OF MY
KNOWLEDGE AND BELIEF.

REGISTERED LAND SURVEYOR
REGISTRATION NO. 28285
STATE OF COLORADO



UELS, LLC
Corporate Office * 85 South 200 East
Vernal, UT 84078 * (435) 789-1017

NAD 83 (TARGET BOTTOM HOLE)	NAD 83 (ENTRY POINT)	NAD 83 (SURFACE LOCATION)
LATITUDE = 40° 53' 41.2" (40.89281)	LATITUDE = 40° 52' 34.44" (40.89200)	LATITUDE = 40° 29' 18.95" (40.488592)
LONGITUDE = 40° 53' 24.17" (40.89047)	LONGITUDE = 40° 52' 18.49" (40.871803)	LONGITUDE = 104° 52' 27.05" (104.574181)
NAD 27 (TARGET BOTTOM HOLE)	NAD 27 (ENTRY POINT)	NAD 27 (SURFACE LOCATION)
LATITUDE = 40° 53' 41.1" (40.89381)	LATITUDE = 40° 52' 34.51" (40.89219)	LATITUDE = 40° 29' 19.00" (40.488611)
LONGITUDE = 40° 53' 22.17" (40.889519)	LONGITUDE = 104° 52' 16.59" (104.871275)	LONGITUDE = 104° 52' 25.15" (104.573653)

SURVEYED BY: DALLAS NIELSEN, D.W.	DATE: 03-13-15
DRAWN BY: J.W.	DATE DRAWN: 12-29-14
SCALE: 1" = 1000'	REVISED: 04-16-15 J.S.

WELL LOCATION PLAT

WELL LOCATION PLAT

LEGEND:

- = 90° SYMBOL
 = PROPOSED WELLHEAD.
 = TARGET BOTTOM HOLE.
 = ENTRY POINT
 = SECTION CORNERS LOCATED.
 = SECTION CORNERS RE-ESTABLISHED.
 (Not Set on Ground.)