

T6N, R88W, 6th. P.M.

SOUTHWESTERN ENERGY PRODUCTION COMPANY

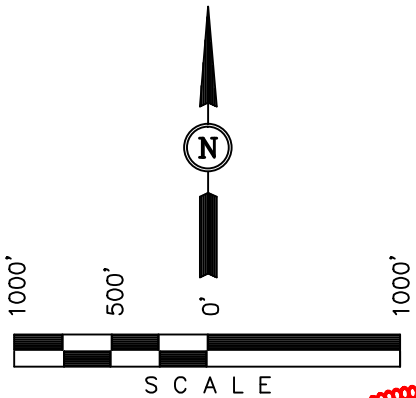
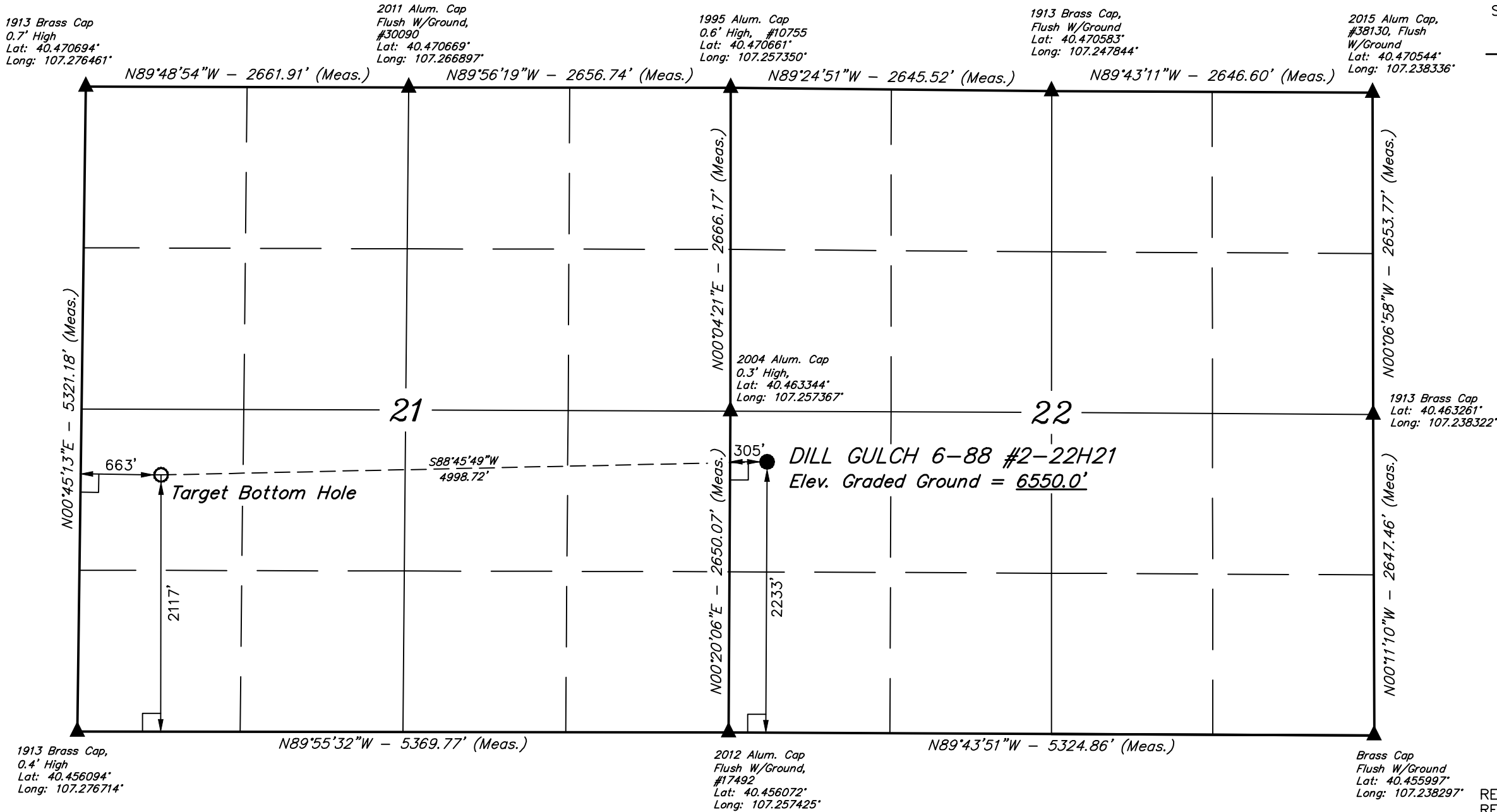
Well location, DILL GULCH 6-88 #2-22H21, located as shown in the NW 1/4 SW 1/4 of Section 22, T6N, R88W, 6th. P.M., Routt County, Colorado.

BASIS OF ELEVATION

SPOT ELEVATION AT A ROAD INTERSECTION LOCATED IN THE SW 1/4 OF SECTION 20, T6N, R88W, 6th P.M., TAKEN FROM THE HAYDEN QUADRANGLE, COLORADO, 7.5 MINUTE SERIES (TOPOGRAPHICAL MAP) PUBLISHED BY THE UNITED STATES DEPARTMENT OF THE INTERIOR, GEOLOGICAL SURVEY. SAID ELEVATION IS MARKED AS BEING 6445 FEET.

BASIS OF BEARINGS

BASIS OF BEARINGS IS A G.P.S. OBSERVATION.



CERTIFICATE

THIS IS TO CERTIFY THAT THE ABOVE PLAT WAS PREPARED FROM FIELD NOTES OF ACTUAL SURVEYS MADE BY ME OR UNDER MY SUPERVISION AND THAT THE SAME ARE TRUE AND CORRECT TO THE BEST OF MY KNOWLEDGE AND BELIEF.

REGISTERED LAND SURVEYOR
REGISTRATION NO. 38130
STATE OF COLORADO 05-13-15

REVISED: 05-13-15 M.D.
REVISED: 05-11-15 M.D.
REVISED: 03-23-15 T.B.

UINTAH ENGINEERING & LAND SURVEYING
85 SOUTH 200 EAST - VERNAL, UTAH 84078
(435) 789-1017

SCALE 1" = 1000'		DATE SURVEYED: 02-24-15	DATE DRAWN: 03-03-15
PARTY GLENN MCELROY J.C. M.O.B.		REFERENCES G.L.O. PLAT	
WEATHER COLD	FILE SOUTHWESTERN ENERGY PRODUCTION COMPANY		

LEGEND:

- └─┘ = 90° SYMBOL
- = PROPOSED WELL HEAD.
- = TARGET BOTTOM HOLE.
- ▲ = SECTION CORNERS LOCATED.

PDOP = 1.8

NAD 83 (TARGET BOTTOM HOLE)	NAD 83 (SURFACE LOCATION)
LATITUDE = 40°27'42.85" (40.461902)	LATITUDE = 40°27'43.90" (40.462194)
LONGITUDE = 107°16'27.24" (107.274233)	LONGITUDE = 107°15'22.60" (107.256278)
NAD 27 (TARGET BOTTOM HOLE)	NAD 27 (SURFACE LOCATION)
LATITUDE = 40°27'42.94" (40.461928)	LATITUDE = 40°27'43.99" (40.462219)
LONGITUDE = 107°16'25.03" (107.273619)	LONGITUDE = 107°15'20.39" (107.255664)
STATE PLANE NAD 83 (COL. NORTH)	STATE PLANE NAD 83 (COL. NORTH)
N: 1416050.03 E: 2506341.86	N: 1416057.12 E: 2511338.87
STATE PLANE NAD 27 (COL. NORTH)	STATE PLANE NAD 27 (COL. NORTH)
N: 416048.73 E: 1506499.74	N: 416055.80 E: 1511496.77