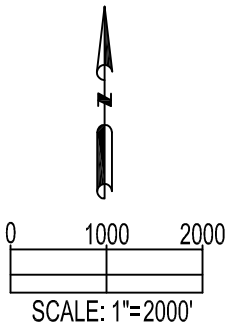
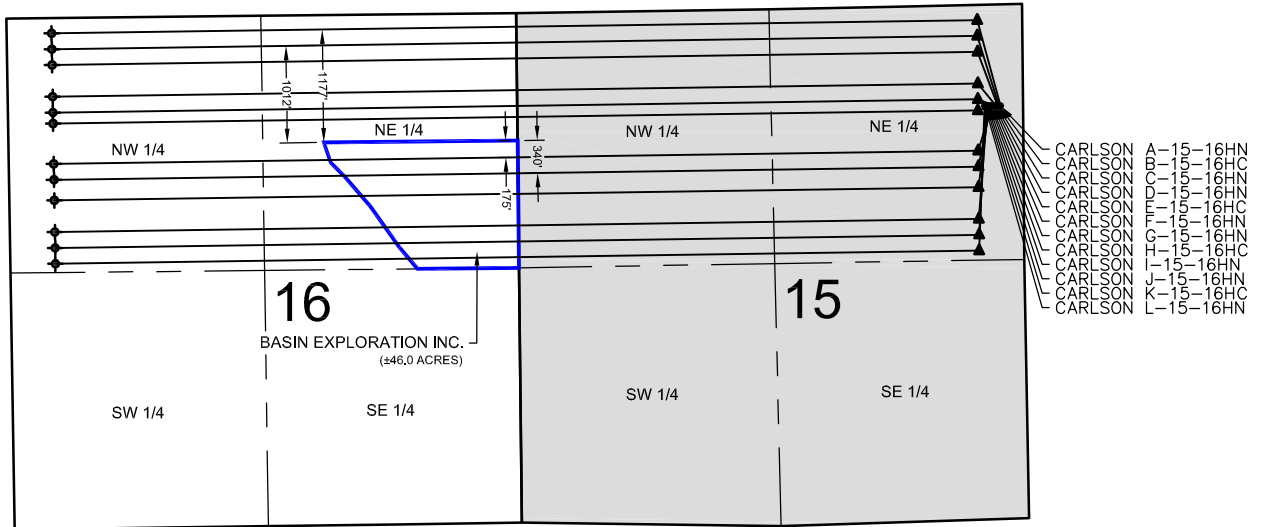


# CARLSON 15-D PAD LEASE DRAWING



## LEGEND

- = PROPOSED WELL
- ▲ = LANDING POINT
- ◆ = BOTTOM HOLE
- = LEASE LINES

## NOTES:

CARLSON A-15-16HN TO BE AT 1057' FNL, 234' FEL.  
 BOTTOM HOLE AT 160' FNL & 470' FWL, SEC 16.  
 CARLSON B-15-16HC TO BE AT 1057' FNL, 249' FEL.  
 BOTTOM HOLE AT 325' FNL & 470' FWL, SEC 16.  
 CARLSON C-15-16HN TO BE AT 1057' FNL, 264' FEL.  
 BOTTOM HOLE AT 490' FNL & 470' FWL, SEC 16.  
 CARLSON D-15-16HN TO BE AT 1056' FNL, 279' FEL.  
 BOTTOM HOLE AT 820' FNL & 470' FWL, SEC 16.  
 CARLSON E-15-16HC TO BE AT 1056' FNL, 294' FEL.  
 BOTTOM HOLE AT 985' FNL & 470' FWL, SEC 16.  
 CARLSON F-15-16HN TO BE AT 1056' FNL, 309' FEL.  
 BOTTOM HOLE AT 1100' FNL & 470' FWL, SEC 16.  
 CARLSON G-15-16HN TO BE AT 1055' FNL, 324' FEL.  
 BOTTOM HOLE AT 1520' FNL & 470' FWL, SEC 16.  
 CARLSON H-15-16HC TO BE AT 1055' FNL, 339' FEL.  
 BOTTOM HOLE AT 1685' FNL & 470' FWL, SEC 16.  
 CARLSON I-15-16HN TO BE AT 1055' FNL, 354' FEL.  
 BOTTOM HOLE AT 1900' FNL & 470' FWL, SEC 16.  
 CARLSON J-15-16HN TO BE AT 1054' FNL, 369' FEL.  
 BOTTOM HOLE AT 2230' FNL & 470' FWL, SEC 16.  
 CARLSON K-15-16HC TO BE AT 1054' FNL, 384' FEL.  
 BOTTOM HOLE AT 2395' FNL & 470' FWL, SEC 16.  
 CARLSON L-15-16HN TO BE AT 1054' FNL, 399' FEL.  
 BOTTOM HOLE AT 2560' FNL & 470' FWL, SEC 16.

## DISTANCE FROM COMPLETED PORTION OF WELL BORE TO LEASE LINE:

CARLSON A-15-16HN 1177' S  
 CARLSON B-15-16HC 1012' S  
 CARLSON G-15-16HN 175' N  
 CARLSON H-15-16HC 340' N

PREPARED BY:



FIELD DATE:

03-20-15

DRAWING DATE:

05-15-15

BY:

MLP

CHECKED BY:

KAD

SITE NAME:

CARLSON 15-D PAD

SURFACE LOCATION:

NE 1/4 NE 1/4, SEC. 15, T5N, R65W, 6TH P.M.  
 WELD COUNTY, COLORADO

PREPARED FOR:

