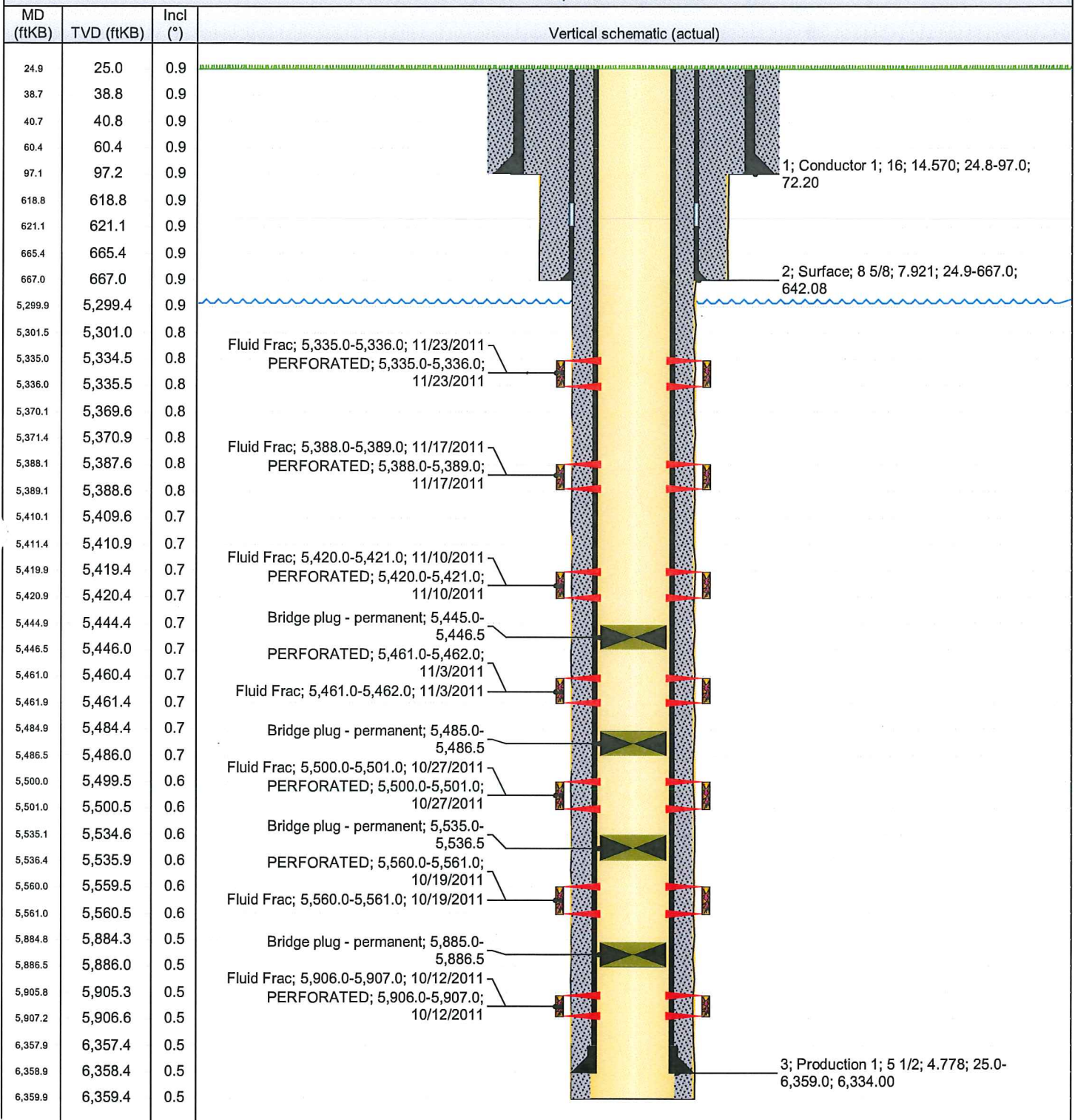


Wellbore Schematic
Well Name: PAWNEE CREEK 9-57-18-1M

State/Province COLORADO	County WELD	Field Name PAWNEE CREEK	Latitude (°) 40.751655	Longitude (°) -103.794482	Lat/Long Datum NAD27	N/S Dist (ft) 2,627.0	N/S Ref FNL
API/ I/O UWI 0512333666	KB-Grd (ft) 25.00	KB-MudLn (ft)	Ground Elevation (ft) 4,598.00	Spud Date 9/9/2011	Completion Date 1/14/2012	On Production Date	

PAWNEE CREEK 9-57-18 1M, 7/16/2013 8:16:17 AM



Directions to Well: