



Well Name: RGU 432-26-198
Surface Location: RGU 42-26-198
North American Datum 1983 , US State Plane 1983 , Colorado Central Zone
Ground Elevation: 6622.00

+N/-S
0.00

+E/-W
0.00

Northing
1778097.70

Easting
2199611.30

Latitude
39.935170

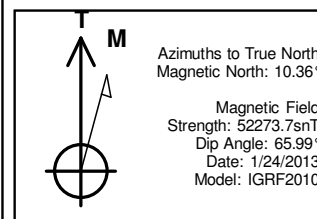
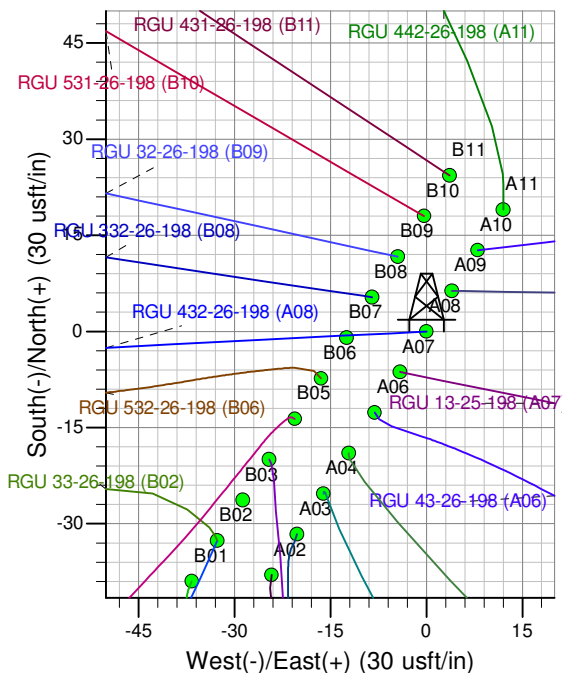
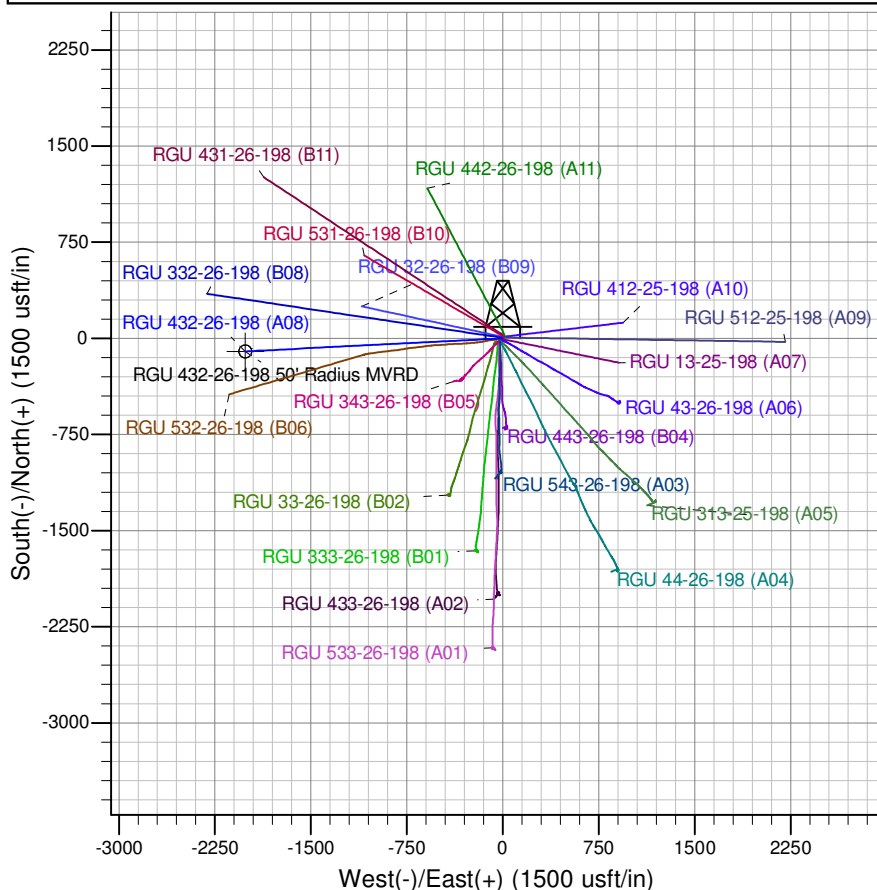
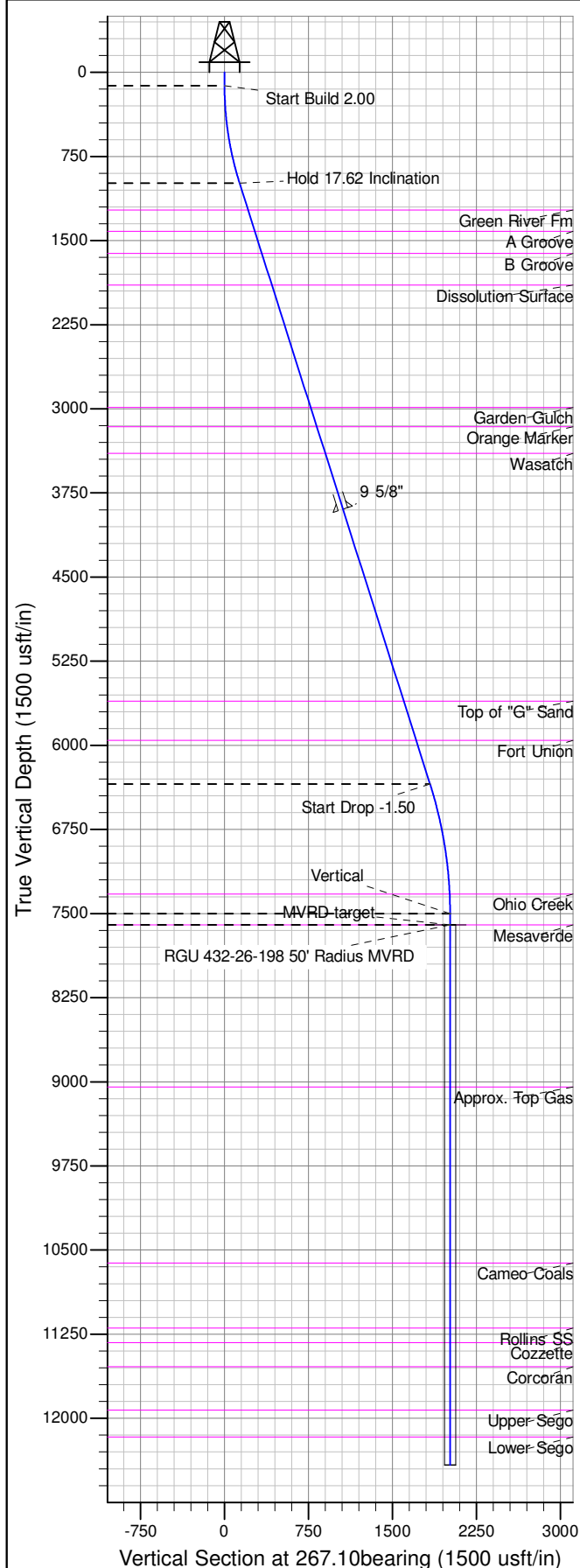
Longitude
-108.354521

Slot
A08

KB @ 6646.00usft (HP 318)

ANNOTATIONS

TVD	MD	Inc	Azi	+N/-S	+E/-W	Vsect	Departure	Annotation
120.00	120.00	0.00	0.00	0.00	0.00	0.00	0.00	Start Build 2.00
987.22	1001.04	17.62	267.10	-6.80	-134.24	134.41	134.41	Hold 17.62 Inclination
6344.71	6622.28	17.62	267.10	-92.91	-1833.70	1836.05	1836.05	Start Drop -1.50
7501.00	7797.00	0.00	0.00	-101.98	-2012.69	2015.27	2015.27	Vertical
7601.00	7897.00	0.00	0.00	-101.98	-2012.69	2015.27	2015.27	MVRD target
12416.00	12712.00	0.00	0.00	-101.98	-2012.69	2015.27	2015.27	TD at 12712.00



Project: RG 26-01S-098W
Site: RGU 42-26-198
Well: RGU 432-26-198
Design #3 8May15 sam