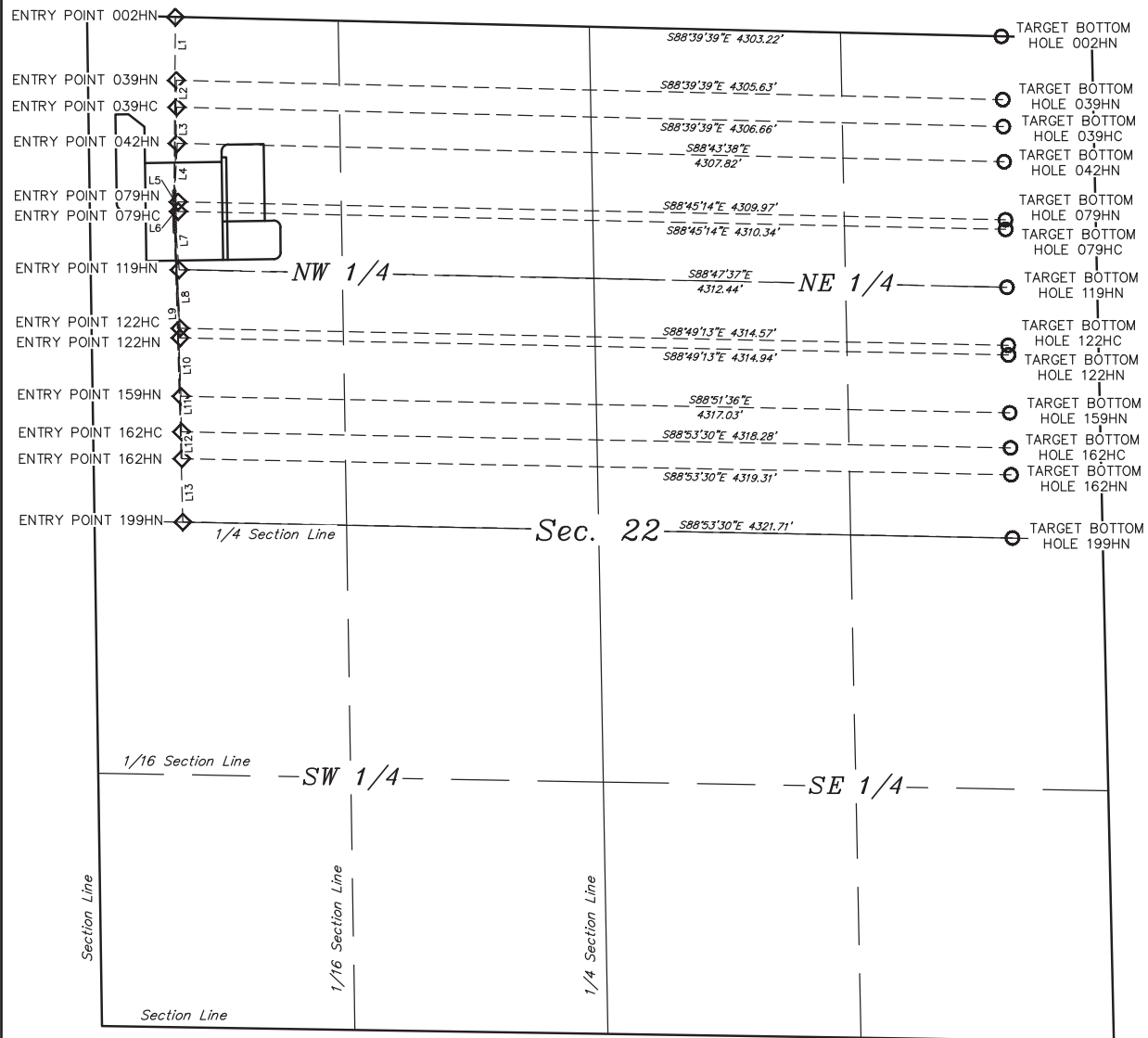




- WELLHEAD
- ◇ Entry Point
- Target Bottom Hole

LINE TABLE		
LINE	DIRECTION	LENGTH
L1	N00°23'58"E	922.86'
L2	N01°01'56"E	608.74'
L3	N01°31'24"E	483.71'
L4	N02°50'01"E	310.94'
L5	N42°39'18"E	29.10'
L6	S55°49'50"E	24.38'
L7	S04°37'05"E	303.85'
L8	S02°46'55"E	592.75'
L9	S02°40'13"E	627.76'
L10	S02°05'40"E	916.87'
L11	S01°54'01"E	1086.82'
L12	S01°47'32"E	1211.95'
L13	S01°35'55"E	1526.02'



NOTES:

GREAT WESTERN OIL & GAS COMPANY
MILLIKEN INVESTORS HD 22-199HN, 162HN, 162HC,
159HN, 122HN, 122HC, 119HN, 079HC, 079HN, 042HN,
039HC, 039HN, 002HN, OPEN SLOT-O & A
SECTION 22, T4N, R67W, 6th P.M.
NW 1/4 NW 1/4



UELS, LLC
Corporate Office * 85 South 200 East
Vernal, UT 84078 * (435) 789-1017

DRAWN BY: J.W.	DATE DRAWN: 11-19-14
SCALE: 1" = 600'	REVISED: 01-06-15
MULTI-Well PLAN	FIGURE #6