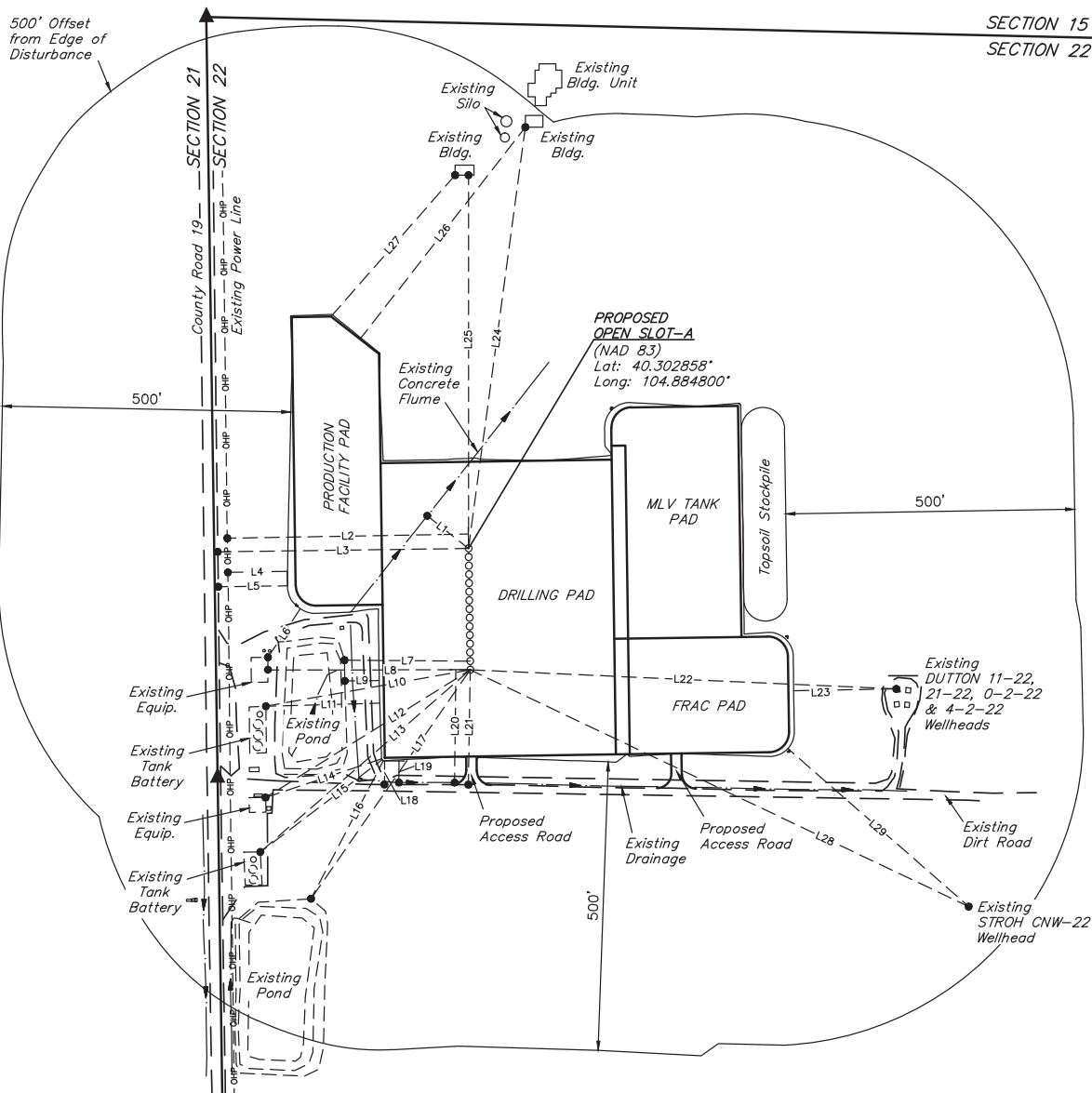


LINE	DIRECTION	LENGTH
L1	N52°W	91'
L2	S89°W	417'
L3	S89°W	434'
L4	S89°W	103'
L5	S89°W	120'
L6	S34°W	101'
L7	WEST	217'
L8	WEST	350'
L9	N89°E	60'
L10	S80°W	359'
L11	S88°W	197'
L12	S58°W	418'

LINE	DIRECTION	LENGTH
L13	S49°W	481'
L14	S72°W	212'
L15	S53°W	264'
L16	S28°W	270'
L17	S35°W	483'
L18	S01°W	41'
L19	S01°W	37'
L20	S01°W	195'
L21	S01°W	199'
L22	S87°E	738'
L23	N89°E	178'
L24	N08°E	736'

LINE	DIRECTION	LENGTH
L25	NORTH	646'
L26	N38°E	463'
L27	N41°E	325'
L28	S65°E	955'
L29	S49°E	416'



NOTES:

GREAT WESTERN OIL & GAS COMPANY

MILLIKEN INVESTORS HD 22-199HN, 162HN, 162HC, 159HN, 122HN, 122HC, 119HN, 079HC, 079HN, 042HN, 039HC, 039HN, 002HN, OPEN SLOT-O & A
SECTION 22, T4N, R67W, 6th P.M.
NW 1/4 NW 1/4



UELS, LLC
Corporate Office * 85 South 200 East
Vernal, UT 84078 * (435) 789-1017

SURVEYED BY: DALLAS NIELSEN, J.S.	SURVEY DATE: 11-13-14
DRAWN BY: J.W.	DATE DRAWN: 11-19-14
SCALE: 1" = 200'	REVISED: 00-00-00

LOCATION DRAWING

FIGURE #5