

T10N, R57W, 6th P.M.

-
- ON CORNERS
TED.
- 2006 Alum. Cap,
0.6' Below Ground
Lat: 40.860678°
Long: 103.804117°
- 2006 Alum. Cap,
0.9' Below Ground
Lat: 40.860736°
Long: 103.795017°
- 2006 Alum. Cap,
0.9' Below Ground
Lat: 40.860797°
Long: 103.785433°
- 2006 Alum. Cap,
0.6' Below Ground
Lat: 40.853414°
Long: 103.804036°
- 2006 Alum. Cap,
0.1' Below Ground
Lat: 40.853497°
Long: 103.785283°
- 1917 Brass Cap,
Fence
Lat: 40.846147°
Long: 103.803839°
- 1917 Brass Cap,
0.2' High
Lat: 40.846172°
Long: 103.794694°
- 1917 Brass Cap,
0.4' High
Lat: 40.846200°
Long: 103.785111°
- LOT 1
- LOT 2
- LOT 3
- LOT 4
- HORSETAIL #07E-1803**
Elev. Graded Ground = 4926.0'
- NOTE:
THE PROPOSED TARGET BOTTOM HOLE FOR
THIS WELL IS LOCATED IN LOT 4 OF
SECTION 18, T10N, R57W, 6th P.M. AT 100'
FSL 810' FWL. IT BEARS S00°38'16"E
8045.43' FROM THE PROPOSED WELLHEAD.
- 830'
- 2457'
- 8045.43'
- S00°38'16"E
- 58
- 57
- W
- W
- 589°29'32"W - 2517.94' (Meas.)
- 589°29'19"W - 2651.74' (Meas.)
- 589°44'57"W - 2530.51' (Meas.)
- 589°45'37"W - 2652.58' (Meas.)
- N00°31'10"W - 2647.68' (Meas.)
- N00°55'43"W - 2661.06' (Meas.)
- N01°11'48"W - 2649.08' (Meas.)
- N01°04'20"W - 2659.64' (Meas.)

SURVEYED BY: DALLAS NIELSEN, J.S.		DATE: 12-12-14
DRAWN BY: K.B.		DATE DRAWN: 12-22-14
SCALE: 1" = 1000'		REVISED: 02-18-15
WELL LOCATION PLAT		



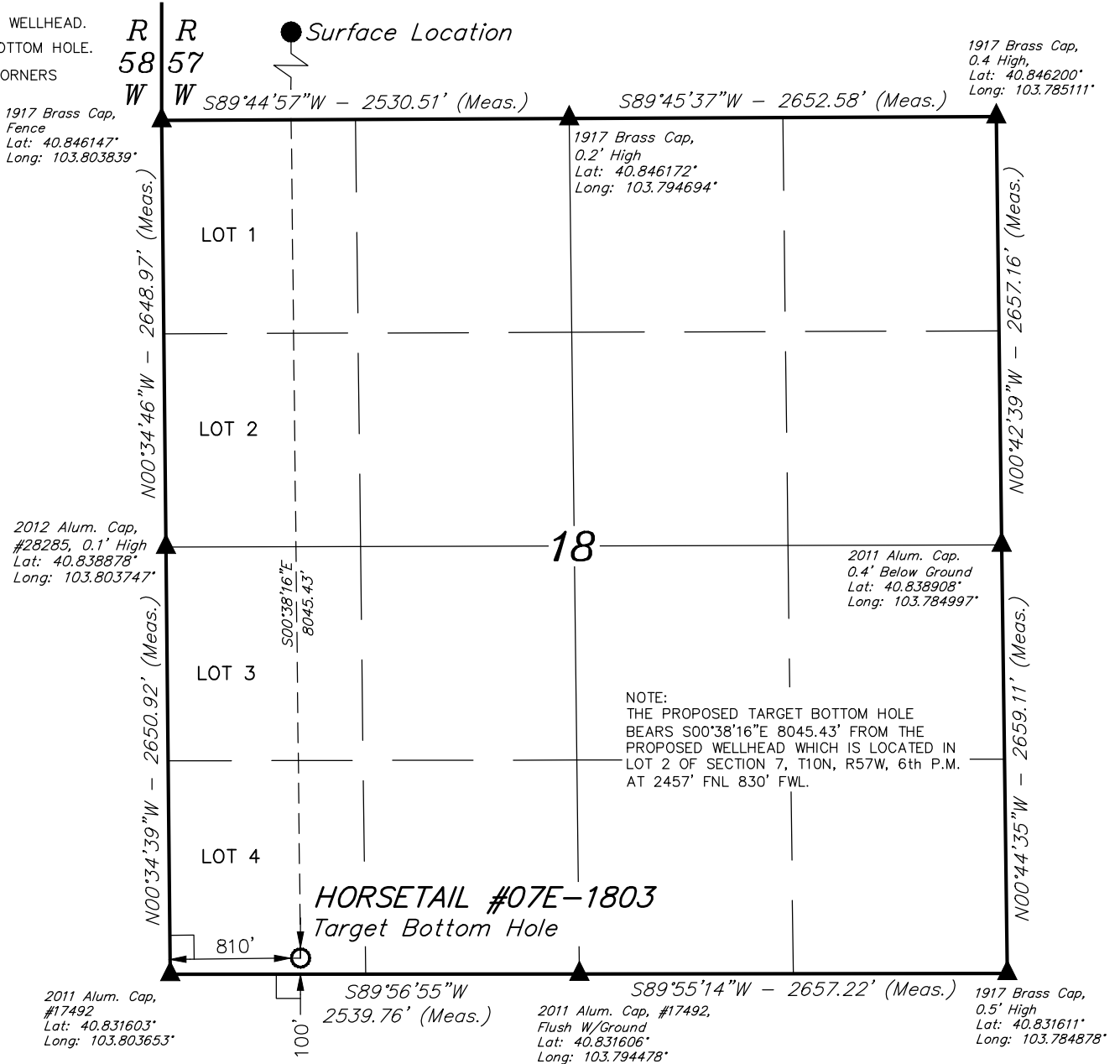
UELS, LLC
Corporate Office * 85 South 200 East
Vernal, UT 84078 * (435) 789-1017



LEGEND:

- = 90° SYMBOL
- = PROPOSED WELLHEAD.
- = TARGET BOTTOM HOLE.
- = SECTION CORNERS LOCATED.

T10N, R57W, 6th P.M.



NOTE:
THE PROPOSED TARGET BOTTOM HOLE BEARS S00°38'16"E 8045.43' FROM THE PROPOSED WELLHEAD WHICH IS LOCATED IN LOT 2 OF SECTION 7, T10N, R57W, 6th P.M. AT 2457' FNL 830' FWL.

NAD 83 (TARGET BOTTOM HOLE)
LATITUDE = 40°49'54.76" (40.831878)
LONGITUDE = 103°48'02.63" (103.800731)
NAD 27 (TARGET BOTTOM HOLE)
LATITUDE = 40°49'54.81" (40.831892)
LONGITUDE = 103°48'00.83" (103.800221)



CERTIFICATE
THIS IS TO CERTIFY THAT THE ABOVE PLAT WAS PREPARED FROM FIELD NOTES OF ACTUAL SURVEYS MADE BY ME OR UNDER MY SUPERVISION AND THAT THE SAME ARE TRUE AND CORRECT TO THE BEST OF MY KNOWLEDGE AND BELIEF.



BASIS OF BEARINGS
BASIS OF BEARINGS IS A G.P.S. OBSERVATION
BASIS OF ELEVATION

SPOT ELEVATION LOCATED AT THE NORTHEAST CORNER OF SECTION 15, T9N, R58W, 6th P.M. TAKEN FROM THE GATEHOOK SPRING, QUADRANGLE, COLORADO, WELD COUNTY, 7.5 MINUTE QUAD (TOPOGRAPHIC MAP) PUBLISHED BY THE UNITED STATES DEPARTMENT OF THE INTERIOR, GEOLOGICAL SURVEY. SAID ELEVATION IS MARKED AS BEING 4679 FEET.

WHITING OIL & GAS CORP.

HORSETAIL #07E-1803 (TARGET BOTTOM HOLE)
LOT 4, SECTION 18, T10N, R57W, 6th P.M.
WELD COUNTY, COLORADO

SURVEYED BY: DALLAS NIELSEN, J.S.	DATE: 12-12-14
DRAWN BY: K.B.	DATE DRAWN: 12-22-14
SCALE: 1" = 1000'	REVISED: 02-18-15

WELL LOCATION PLAT



UELS, LLC
Corporate Office * 85 South 200 East
Vernal, UT 84078 * (435) 789-1017

