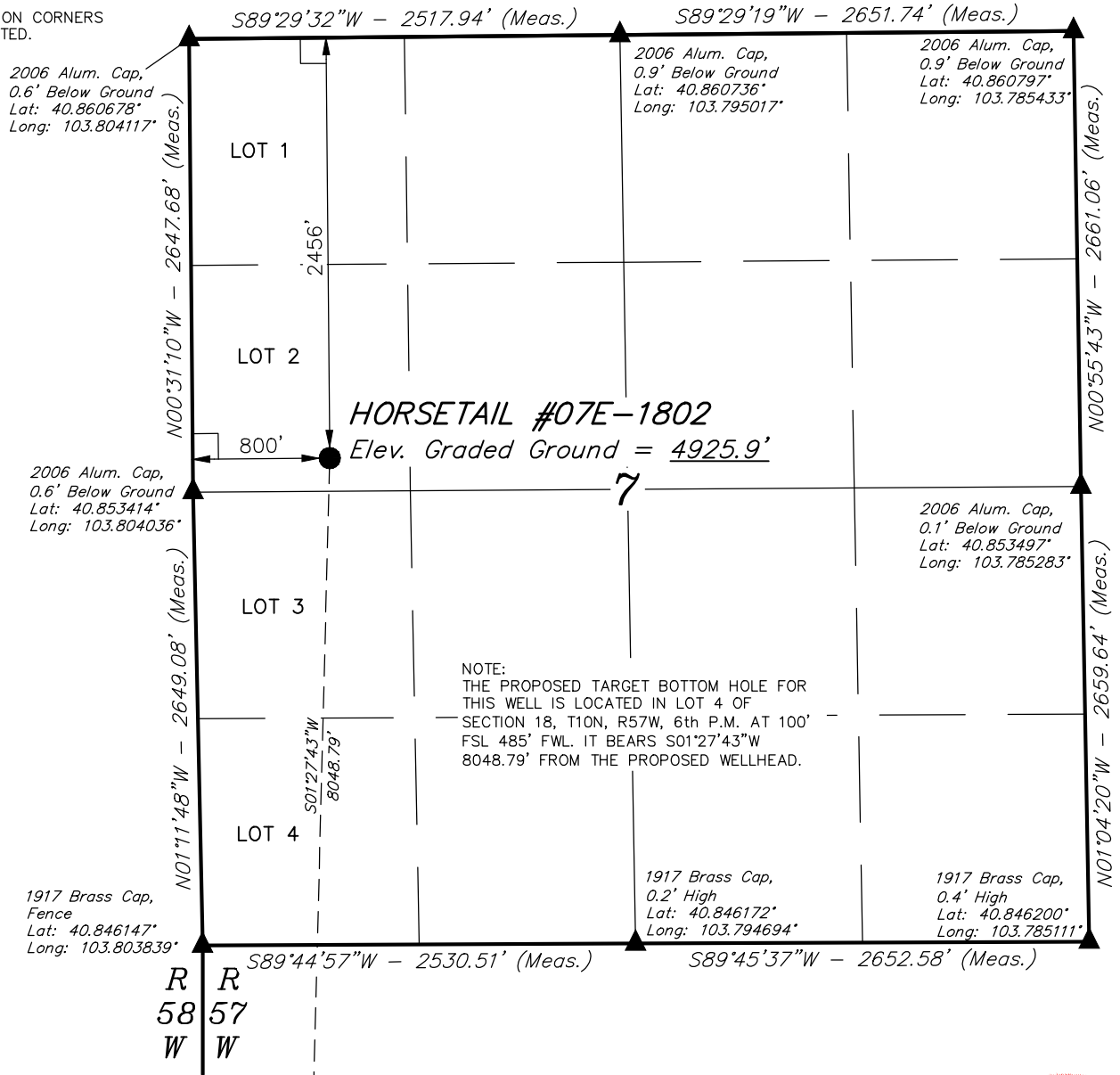


**LEGEND:**

- └─┘ = 90° SYMBOL
- = PROPOSED WELLHEAD.
- = TARGET BOTTOM HOLE.
- ▲ = SECTION CORNERS LOCATED.

# T10N, R57W, 6th P.M.



NOTE:  
THE PROPOSED TARGET BOTTOM HOLE FOR THIS WELL IS LOCATED IN LOT 4 OF SECTION 18, T10N, R57W, 6th P.M. AT 100' FSL 485' FWL. IT BEARS S01°27'43"W 8048.79' FROM THE PROPOSED WELLHEAD.

2006 Alum. Cap,  
0.6' Below Ground  
Lat: 40.853414°  
Long: 103.804036°

1917 Brass Cap,  
Fence  
Lat: 40.846147°  
Long: 103.803839°

2006 Alum. Cap,  
0.9' Below Ground  
Lat: 40.860736°  
Long: 103.795017°

1917 Brass Cap,  
0.2' High  
Lat: 40.846172°  
Long: 103.794694°

2006 Alum. Cap,  
0.9' Below Ground  
Lat: 40.860797°  
Long: 103.785433°

2006 Alum. Cap,  
0.1' Below Ground  
Lat: 40.853497°  
Long: 103.785283°

1917 Brass Cap,  
0.4' High  
Lat: 40.846200°  
Long: 103.785111°

R  
58  
W

R  
57  
W

○ Target  
Bottom Hole

PDOP = 1.5

<b>NAD 83 (SURFACE LOCATION)</b>	
LATITUDE = 40°51'14.25" (40.853958)	
LONGITUDE = 103°48'04.14" (103.801150)	
<b>NAD 27 (SURFACE LOCATION)</b>	
LATITUDE = 40°51'14.30" (40.853972)	
LONGITUDE = 103°48'02.34" (103.800650)	



**CERTIFICATE**  
THIS IS TO CERTIFY THAT THE ABOVE PLAT WAS PREPARED FROM FIELD NOTES OF ACTUAL SURVEYS MADE BY ME OR UNDER MY SUPERVISION AND THAT THE SAME ARE TRUE AND CORRECT TO THE BEST OF MY KNOWLEDGE AND BELIEF.



**BASIS OF BEARINGS**  
BASIS OF BEARINGS IS A G.P.S. OBSERVATION

**BASIS OF ELEVATION**  
SPOT ELEVATION LOCATED AT THE NORTHEAST CORNER OF SECTION 15, T9N, R58W, 6th P.M. TAKEN FROM THE GATEHOOK SPRING, QUADRANGLE, COLORADO, WELD COUNTY, 7.5 MINUTE QUAD (TOPOGRAPHIC MAP) PUBLISHED BY THE UNITED STATES DEPARTMENT OF THE INTERIOR, GEOLOGICAL SURVEY. SAID ELEVATION IS MARKED AS BEING 4679 FEET.

**WHITING OIL & GAS CORP.**

**HORSETAIL #07E-1802 (SURFACE LOCATION)  
LOT 2, SECTION 7, T10N, R57W, 6th P.M.  
WELD COUNTY, COLORADO**

SURVEYED BY: DALLAS NIELSEN, J.S.	DATE: 12-12-14
DRAWN BY: K.B.	DATE DRAWN: 07-31-14
SCALE: 1" = 1000'	REVISED: 02-18-15



**UELS, LLC**  
Corporate Office \* 85 South 200 East  
Vernal, UT 84078 \* (435) 789-1017

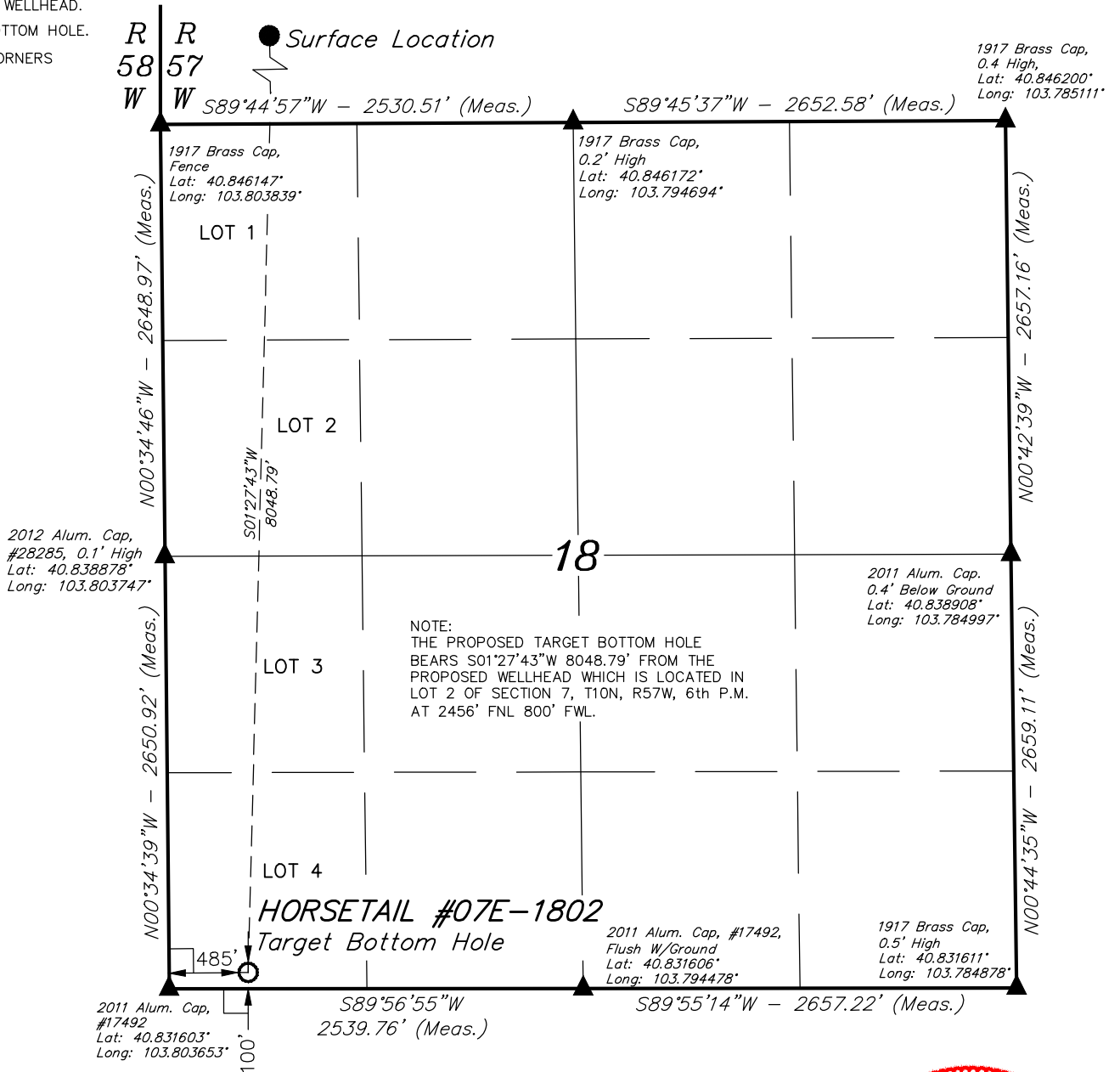


**WELL LOCATION PLAT**

# T10N, R57W, 6th P.M.

## LEGEND:

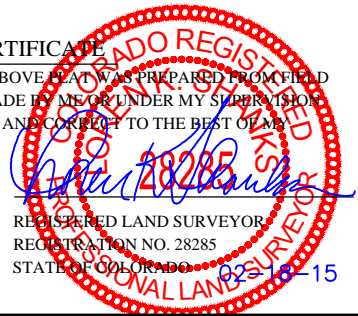
- = 90° SYMBOL
- = PROPOSED WELLHEAD.
- = TARGET BOTTOM HOLE.
- = SECTION CORNERS LOCATED.



<b>NAD 83 (TARGET BOTTOM HOLE)</b>
LATITUDE = 40°49'54.76" (40.831878)
LONGITUDE = 103°48'06.86" (103.801906)
<b>NAD 27 (TARGET BOTTOM HOLE)</b>
LATITUDE = 40°49'54.81" (40.831892)
LONGITUDE = 103°48'05.05" (103.801403)



**CERTIFICATE**  
THIS IS TO CERTIFY THAT THE ABOVE PLAT WAS PREPARED FROM FIELD NOTES OF ACTUAL SURVEYS MADE BY ME OR UNDER MY SUPERVISION AND THAT THE SAME ARE TRUE AND CORRECT TO THE BEST OF MY KNOWLEDGE AND BELIEF.



**BASIS OF BEARINGS**  
BASIS OF BEARINGS IS A G.P.S. OBSERVATION

**BASIS OF ELEVATION**

SPOT ELEVATION LOCATED AT THE NORTHEAST CORNER OF SECTION 15, T9N, R58W, 6th P.M. TAKEN FROM THE GATEHOOK SPRING, QUADRANGLE, COLORADO, WELD COUNTY, 7.5 MINUTE QUAD (TOPOGRAPHIC MAP) PUBLISHED BY THE UNITED STATES DEPARTMENT OF THE INTERIOR, GEOLOGICAL SURVEY. SAID ELEVATION IS MARKED AS BEING 4679 FEET.

**WHITING OIL & GAS CORP.**

**HORSETAIL #07E-1802 (TARGET BOTTOM HOLE)  
LOT 4, SECTION 18, T10N, R57W, 6th P.M.  
WELD COUNTY, COLORADO**

SURVEYED BY: DALLAS NIELSEN, J.S.	DATE: 12-12-14
DRAWN BY: K.B.	DATE DRAWN: 07-31-14
SCALE: 1" = 1000'	REVISED: 02-18-15

**WELL LOCATION PLAT**



**UELS, LLC**  
Corporate Office \* 85 South 200 East  
Vernal, UT 84078 \* (435) 789-1017

