



Project: Weld County, CO
 Site: Sec 7-T10N-R57W
 Well: Horsetail #07E-0601A
 Wellbore: Hz
 Design: Plan #1

PROJECT DETAILS: Weld County, CO
 Geodetic System: US State Plane 1983
 Datum: North American Datum 1983
 Ellipsoid: GRS 1980
 Zone: Colorado Northern Zone
 System Datum: Mean Sea Level



Azimuths to True North
 Magnetic North: 7.88°
 Magnetic Field
 Strength: 53087.0snT
 Dip Angle: 67.44°
 Date: 1/5/2015
 Model: IGRF2010

WELL DETAILS: Horsetail #07E-0601A

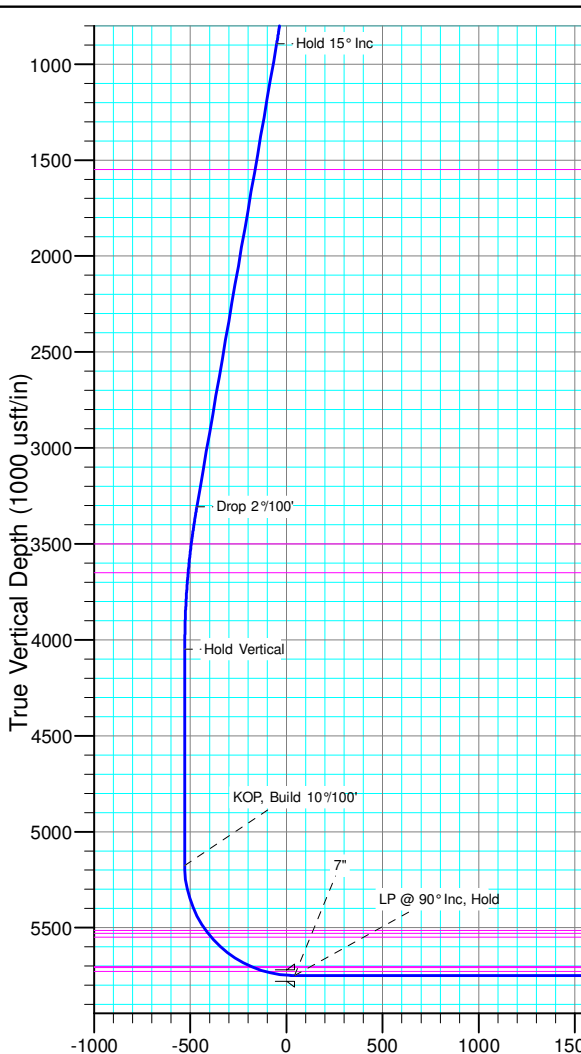
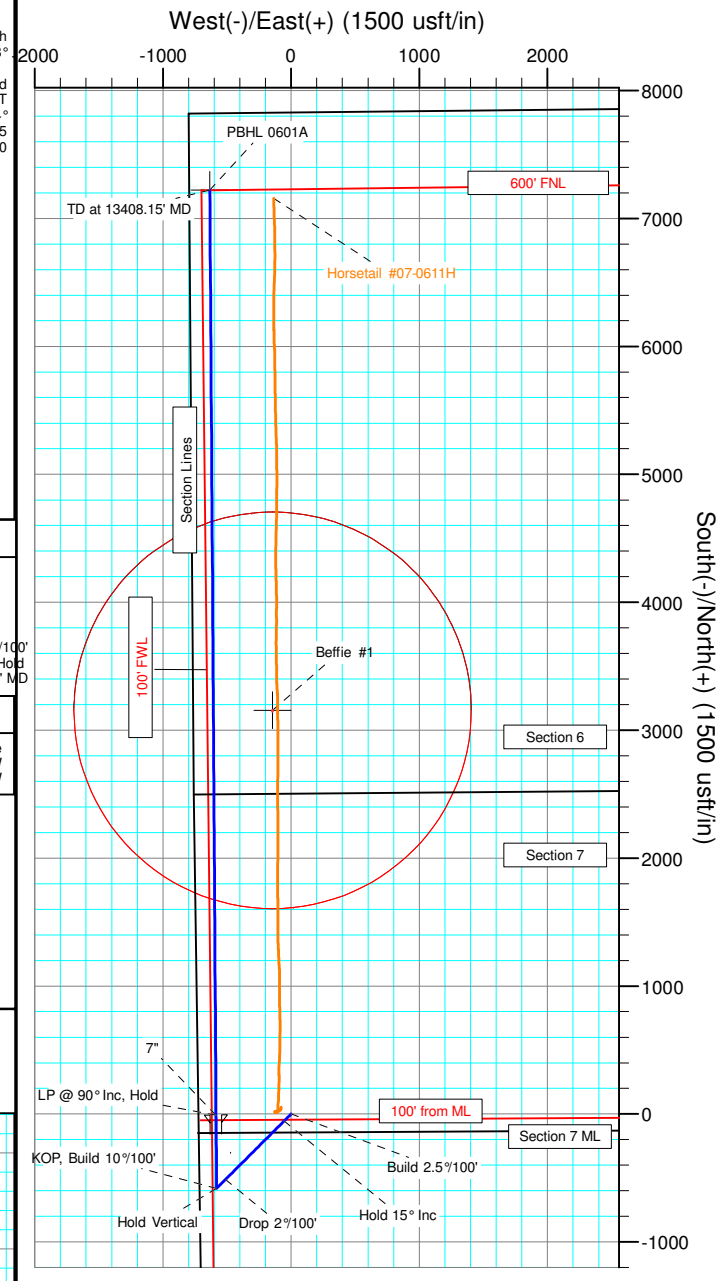
+N/-S	+E/-W	Northing	Ground Level:	4925.70	Easting	Latitude	Longitude	Slot
0.00	0.00	1558398.03	3469889.55	40° 51'	13.770 N	103° 48'	4.940 W	

SECTION DETAILS

Sec	MD	Inc	Azi	TVD	+N/-S	+E/-W	Dleg	TFace	VSect	Target
1	0.00	0.00	0.00	0.00	0.00	0.00	0.00	0.00	0.00	
2	300.00	0.00	0.00	300.00	0.00	0.00	0.00	0.00	0.00	
3	900.00	15.00	225.00	893.17	-55.22	-55.22	2.50	225.00	-50.18	
4	3400.00	15.00	225.00	3307.98	-512.75	-512.75	0.00	0.00	-465.95	
5	4150.00	0.00	0.00	4049.44	-581.78	-581.78	2.00	180.00	-528.67	
6	5277.00	0.00	0.00	5176.45	-581.78	-581.78	0.00	0.00	-528.67	
7	6177.00	90.00	359.62	5749.40	-8.83	-585.61	10.00	359.62	42.41	PBHL 0601A
8	6197.85	90.00	359.62	5749.40	12.01	-585.75	0.02	180.00	63.19	
9	13408.15	90.00	359.62	5750.00	7222.16	-634.00	0.00	0.00	7249.93	PBHL 0601A

FORMATION TOP DETAILS

TVDPath	MDPath	Formation
1550.00	1580.00	Upper Pierre
3500.00	3597.13	Hygiene
3650.00	3749.25	Lower Pierre
5515.00	5639.20	P200 Marker
5530.00	5658.02	P300 Marker
5550.00	5683.91	P350 Marker
5702.00	5942.30	Sharon Springs
5707.00	5955.18	Niobrara
5727.00	6016.25	Top A Chalk



ANNOTATIONS

TVD	MD	Inc	Azi	+N/-S	+E/-W	VSect	Departure	Annotation
300.00	300.00	0.00	0.00	0.00	0.00	0.00	0.00	Build 2.5°/100'
893.17	900.00	15.00	225.00	-55.22	-55.22	-50.18	78.09	Hold 15° Inc
3307.98	3400.00	15.00	225.00	-512.75	-512.75	-465.95	725.14	Drop 2°/100'
4049.44	4150.00	0.00	0.00	-581.78	-581.78	-528.67	822.75	Hold Vertical
5176.45	5277.00	0.00	0.00	-581.78	-581.78	-528.67	822.75	KOP, Build 10°/100'
5749.40	6177.00	90.00	359.62	-8.83	-585.61	42.41	1395.71	LP @ 90° Inc, Hold
5750.00	13408.15	90.00	359.62	7222.16	-634.00	7249.93	8626.86	TD at 13408.15' MD

DESIGN TARGET DETAILS

Name	TVD	+N/-S	+E/-W	Northing	Easting	Latitude	Longitude
PBHL 0601A	5750.00	7222.16	-634.00	1565606.72	3469117.32	40° 52' 25.130 N	103° 48' 13.193 W
Baffle #1	6735.70	3154.87	-144.61	1561549.55	3469684.54	40° 51' 44.942 N	103° 48' 6.822 W

SHL:
 2504' FNL, 738' FWL
 Sec7-T10N-R57W
 BHL:
 600' FNL, 161' FWL
 Sec6-T10N-R57W
 7":
 2512' FNL, 141' FWL
 Sec7-T10N-R57W

