

April 8, 2015



410 17th Street, Suite 1400
Denver, CO 80202
(720) 440-6100 phone
(720) 305-0804 fax

Bonanzacrk.com

Colorado Oil and Gas Conservation Commission
The Chancery Building
1120 Lincoln Street, Suite 801
Denver, CO 80203
Attn: Matthew Lepore, Director

Re: Notice of Proposed GWA Infill Wellbore Spacing Unit; No Objections

Pronghorn 21-6-7XRLNB

410' FNL and 1,766' FWL of section 6 T5N R61W from the 6th PB&M, Weld County, CO

Director Lepore,

Bonanza Creek Operating Company, LLC. (Bonanza) intends to permit, drill, and operate the referenced horizontal well. As defined by Colorado Oil and Gas Conservation Commission (COGCC) Rule 318A.a.(4)D., Bonanza proposes the following wellbore spacing unit:

E2/W2 Sec 06-T5N-R61W and E2/W2 Sec 07-T5N-R61W 6th PB&M, Weld County, Colorado containing approximately 320 acres.

Bonanza has notified the other owners in the unit and no objections were received. Copies of the notifications are maintained in Bonanza's files.

Thank you for your attention to this matter. Bonanza respectfully requests that the COGCC review the enclosed Proposed GWA Infill Wellbore Spacing Unit information and administratively approve this request.

Sincerely,

A handwritten signature in blue ink that reads 'Randy Edelen'.

Randy Edelen, P. E.
Regulatory Specialist
BONANZA CREEK ENERGY OPERATING COMPANY, LLC

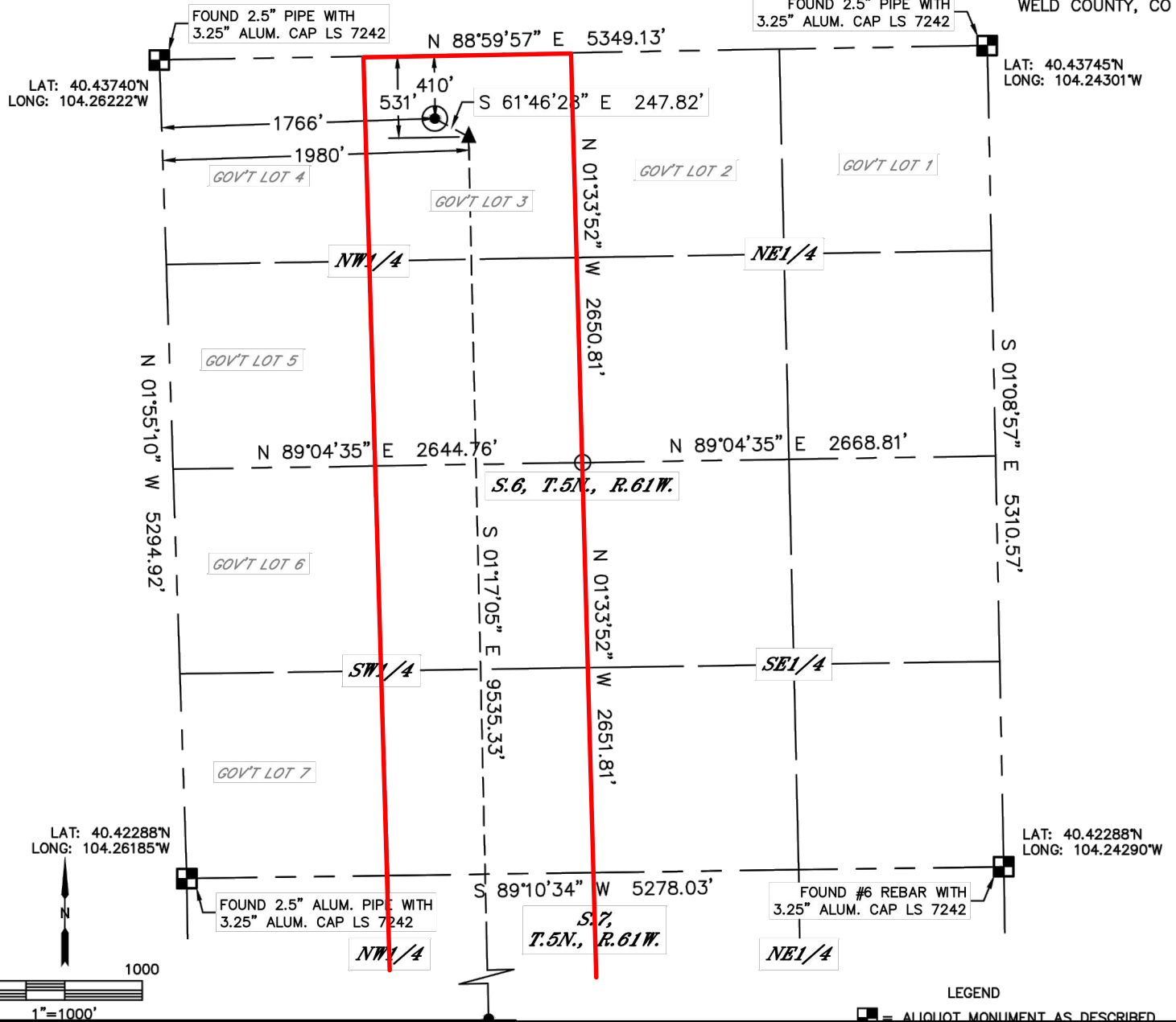


Lat40°, Inc. 6250 W. 10th Street, Unit 2, Greeley, CO 970-515-5294

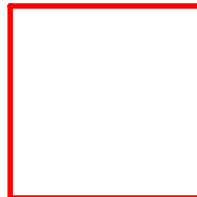
WELL LOCATION CERTIFICATE

PRONGHORN 21-6-7XRLNB

SECTION: 6
TOWNSHIP: 5N
RANGE: 61W
6TH. P.M.
WELD COUNTY, CO



**BONANZA
CREEK**



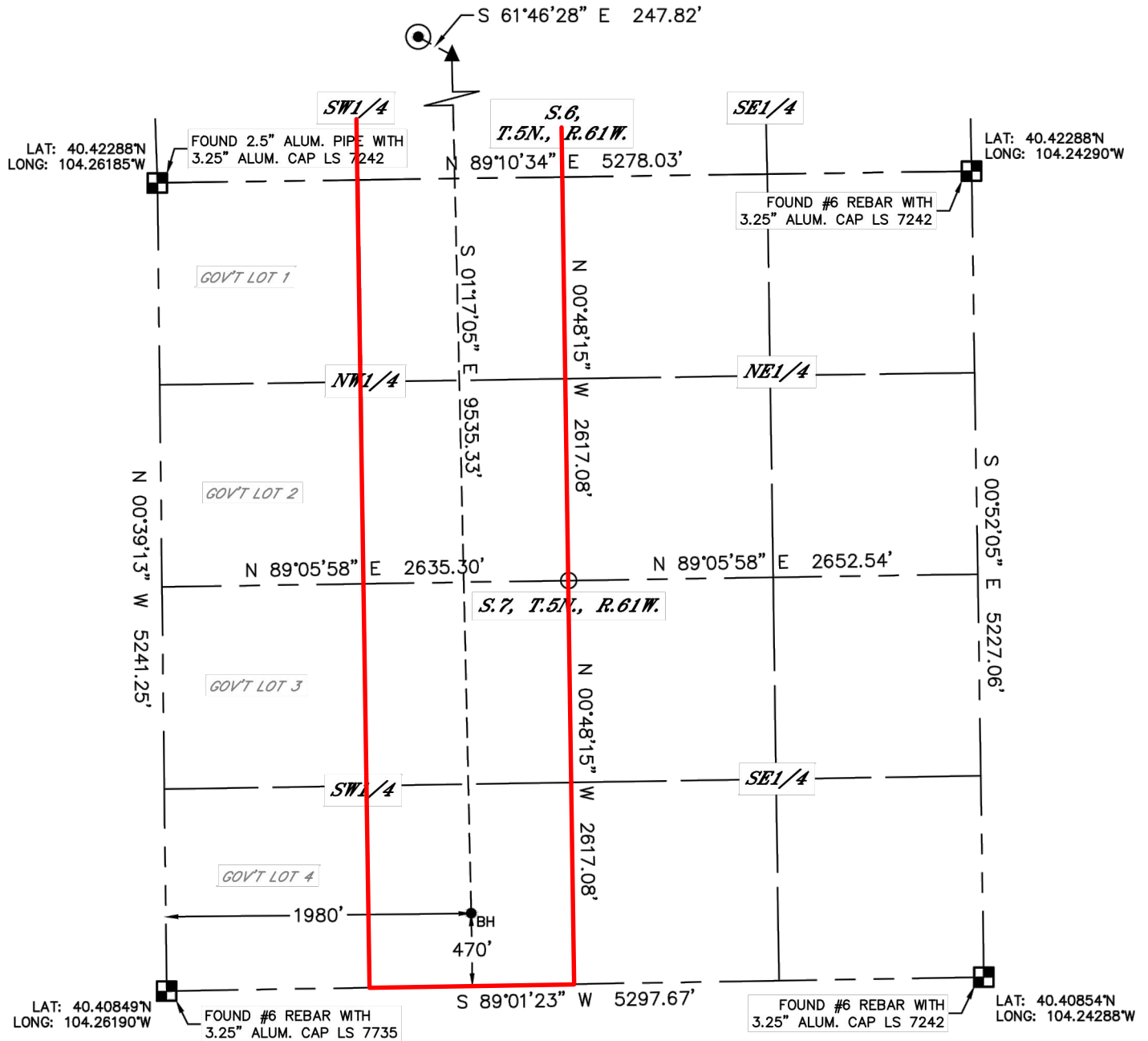
Wellbore Spacing Unit Outline



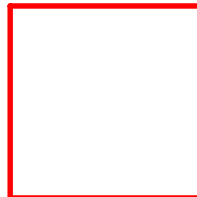
Wellbore Spacing Unit Map

17 December 2014 ksc
page 1/2

Pronghorn 21-6-7XRLNB
E2/W2 Sec 06-T5N-R61W 6th PM
E2/W2 Sec 07-T5N-R61W 6th PM
Weld County, Colorado



**BONANZA
CREEK**



Wellbore Spacing Unit Outline



Wellbore Spacing Unit Map

17 December 2014 ksc
page 2/2

Pronghorn 21-6-7XRLNB
E2/W2 Sec 06-T5N-R61W 6th PM
E2/W2 Sec 07-T5N-R61W 6th PM
Weld County, Colorado