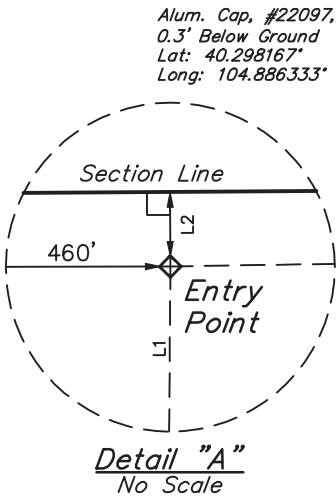


# LEGEND:

- └─ = 90° SYMBOL
- = PROPOSED WELLHEAD.
- ◆ = ENTRY POINT.
- = TARGET BOTTOM HOLE.
- ▲ = SECTION CORNERS LOCATED.

T4N, R67W, 6th P.M.

LINE TABLE		
LINE	DIRECTION	LENGTH
L1	N00°23'58"E	922.86'
L2	N01°20'30"E	1.10'
L3	N01°20'12"E	1.10'



Alum. Cap, #34995,  
0.7' Below Ground  
Lat: 40.305389°  
Long: 104.886403°

See Detail "A"  
@ Below  
S88°39'30"E  
2616.84' (Meas.)

Alum. Cap, #20676,  
0.8' Below Ground  
Lat: 40.305167°  
Long: 104.877028°

See Detail "C"  
@ Below  
S88°39'48"E  
2617.19' (Meas.)

Alum. Cap, #4392,  
1.0' Below Ground  
Lat: 40.304944°  
Long: 104.867650°

Alum. Cap, #34995,  
0.5' Below Ground  
Lat: 40.301778°  
Long: 104.886369°

MILLIKEN INVESTORS  
HD 22-002HN  
Elev. Ungraded  
Ground = 4896.3'

See Detail "B"  
@ Below

Target  
Bottom  
Hole

Alum. Cap, #34995,  
0.2' High  
Lat: 40.301569°  
Long: 104.876975°

Alum. Cap, #34995,  
1.3' Below Ground  
Lat: 40.297972°  
Long: 104.876925°

Alum. Cap, #24302,  
0.6' Below Ground  
Lat: 40.297778°  
Long: 104.867517°

Alum. Cap, #22097,  
0.3' Below Ground  
Lat: 40.298167°  
Long: 104.886333°

Alum. Cap, #20676,  
0.8' Below Ground  
Lat: 40.305167°  
Long: 104.877028°

Section  
Line

Detail "B"  
No Scale

22

Section  
Line

Target  
Bottom  
Hole

Detail "C"  
No Scale

Alum. Cap, #24670,  
0.8' Below Ground  
Lat: 40.290942°  
Long: 104.886267°

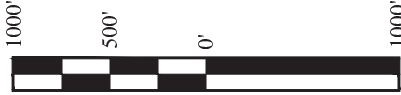
Alum. Cap, #25619,  
1.0' Below Ground  
Lat: 40.290775°  
Long: 104.876822°

Alum. Cap,  
#25619, 0.1' High  
Lat: 40.290611°  
Long: 104.867381°

PDOP = 1.4

<b>NAD 83 (TARGET BOTTOM HOLE)</b>	
LATITUDE = 40°18'17.94" (40.304983)	
LONGITUDE = 104°52'09.61" (104.869336)	
<b>NAD 27 (TARGET BOTTOM HOLE)</b>	
LATITUDE = 40°18'18.00" (40.305000)	
LONGITUDE = 104°52'07.71" (104.868808)	

<b>NAD 83 (ENTRY POINT)</b>	
LATITUDE = 40°18'19.25" (40.305347)	
LONGITUDE = 104°53'05.11" (104.884753)	
<b>NAD 27 (ENTRY POINT)</b>	
LATITUDE = 40°18'19.32" (40.305367)	
LONGITUDE = 104°53'03.21" (104.884225)	
<b>NAD 83 (SURFACE LOCATION)</b>	
LATITUDE = 40°18'10.14" (40.302817)	
LONGITUDE = 104°53'05.28" (104.884800)	
<b>NAD 27 (SURFACE LOCATION)</b>	
LATITUDE = 40°18'10.20" (40.302833)	
LONGITUDE = 104°53'03.38" (104.884272)	



CERTIFICATE  
THIS IS TO CERTIFY THAT THE ABOVE PLAT WAS PREPARED FROM FIELD  
NOTES OF ACTUAL SURVEYS MADE BY ME OR UNDER MY SUPERVISION  
AND THAT THE SAME ARE TRUE AND CORRECT TO THE BEST OF MY  
KNOWLEDGE AND BELIEF.



**BASIS OF BEARINGS**  
BASIS OF BEARINGS IS A G.P.S. OBSERVATION  
**BASIS OF ELEVATION**

USGS COOPERATIVE BASE NETWORK CONTROL STATION,  
DESIGNATION "VERMILYEA". NGS DATA SHEET LISTS THE  
NAVD 88 ELEVATION AS BEING 5026 FEET.



**GREAT WESTERN OIL & GAS COMPANY**

MILLIKEN INVESTORS HD 22-002HN  
NW 1/4 NW 1/4, SECTION 22, T4N, R67W, 6th P.M.  
WELD COUNTY, COLORADO

SURVEYED BY: DALLAS NIELSEN, J.S.	DATE: 11-13-14
DRAWN BY: J.W.	DATE DRAWN: 11-19-14
SCALE: 1" = 1000'	REVISED: 00-00-00

**WELL LOCATION PLAT**



UELS, LLC  
Corporate Office \* 85 South 200 East  
Vernal, UT 84078 \* (435) 789-1017