

# T1N, R66W, 6th P.M.

## LEGEND:

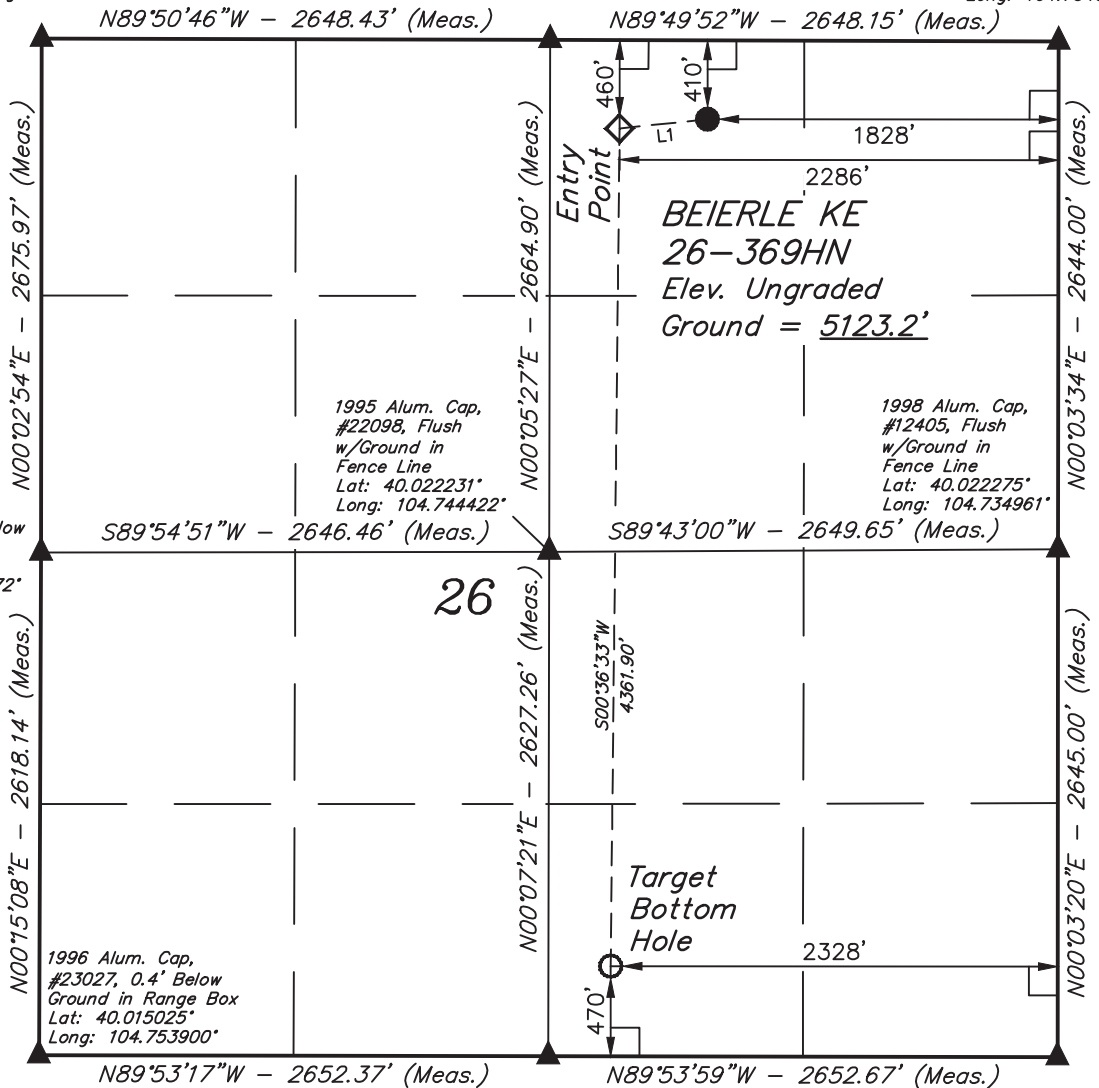
- = 90° SYMBOL
- = PROPOSED WELLHEAD.
- = ENTRY POINT
- = TARGET BOTTOM HOLE.
- = SECTION CORNERS LOCATED.

1997 Alum. Cap,  
#13155, 0.5' Below  
Ground in Center  
of Road  
Lat: 40.029558°  
Long: 104.753875°

Alum. Cap, #12330,  
0.4' Below Ground  
in Center of Road  
Lat: 40.029547°  
Long: 104.744417°

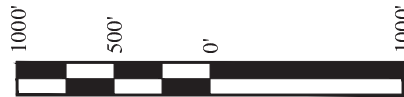
2002 Alum. Cap,  
#25636, 0.6' Below  
Ground in Center  
of Road  
Lat: 40.029533°  
Long: 104.734961°

LINE TABLE		
LINE	DIRECTION	LENGTH
L1	S83°56'06"W	460.54'



PDOP = 1.8

<b>NAD 83 (TARGET BOTTOM HOLE)</b>	
LATITUDE = 40°00'58.71" (40.016308)	
LONGITUDE = 104°44'35.78" (104.743272)	
<b>NAD 27 (TARGET BOTTOM HOLE)</b>	
LATITUDE = 40°00'58.77" (40.016325)	
LONGITUDE = 104°44'33.89" (104.742747)	
<b>NAD 83 (ENTRY POINT)</b>	<b>NAD 83 (SURFACE LOCATION)</b>
LATITUDE = 40°01'41.82" (40.028283)	LATITUDE = 40°01'42.30" (40.028417)
LONGITUDE = 104°44'35.25" (104.743125)	LONGITUDE = 104°44'29.36" (104.741489)
<b>NAD 27 (ENTRY POINT)</b>	<b>NAD 27 (SURFACE LOCATION)</b>
LATITUDE = 40°01'41.88" (40.028300)	LATITUDE = 40°01'42.36" (40.028433)
LONGITUDE = 104°44'33.36" (104.742600)	LONGITUDE = 104°44'27.47" (104.740964)



1998 Alum. Cap, #28656, 0.1' Below Ground in Range Box  
Lat: 40.015019°  
Long: 104.744431°

1984 Alum. Cap, 1.0' Below Ground  
Lat: 40.015014°  
Long: 104.734961°

CERTIFICATE  
THIS IS TO CERTIFY THAT THE ABOVE PLAT WAS PREPARED FROM FIELD NOTES OF ACTUAL SURVEYS MADE BY ME OR UNDER MY SUPERVISION AND THAT THE SAME ARE TRUE AND CORRECT TO THE BEST OF MY KNOWLEDGE AND BELIEF.



**BASIS OF BEARINGS**  
BASIS OF BEARINGS IS A G.P.S. OBSERVATION  
**BASIS OF ELEVATION**

HUBBS TRIANGULATION STATION LOCATED IN THE NE 1/4 OF SECTION 21, T1N, R64W, 6th, P.M., TAKEN FROM THE KEENESBURG, QUADRANGLE, COLORADO, WELD COUNTY, 7.5 MINUTE QUAD (TOPOGRAPHIC MAP) PUBLISHED BY THE UNITED STATES DEPARTMENT OF THE INTERIOR, GEOLOGICAL SURVEY. SAID ELEVATION IS MARKED AS BEING 5168 FEET.

## GREAT WESTERN OIL & GAS COMPANY

**BEIERLE KE 26-369HN**  
NW 1/4 NE 1/4, SECTION 26, T1N, R66W, 6th P.M.  
WELD COUNTY, COLORADO



SURVEYED BY: GREG WEIMER, C.J.	DATE: 08-13-14
DRAWN BY: J.W.	DATE DRAWN: 08-21-14
SCALE: 1" = 1000'	REVISED: 09-05-14

## WELL LOCATION PLAT



**UELS, LLC**  
Corporate Office \* 85 South 200 East  
Vernal, UT 84078 \* (435) 789-1017