

**BILL BARRETT CORPORATION**

**ANSCHUTZ STATE 5-62-22 23 NWSW PAD**

**#5-62-22-3340B2**

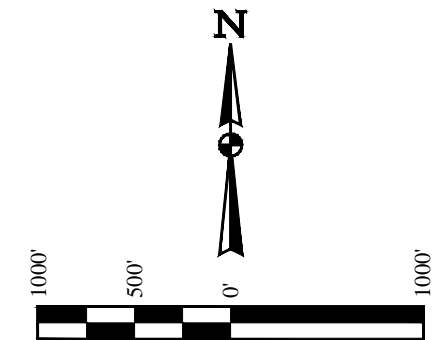
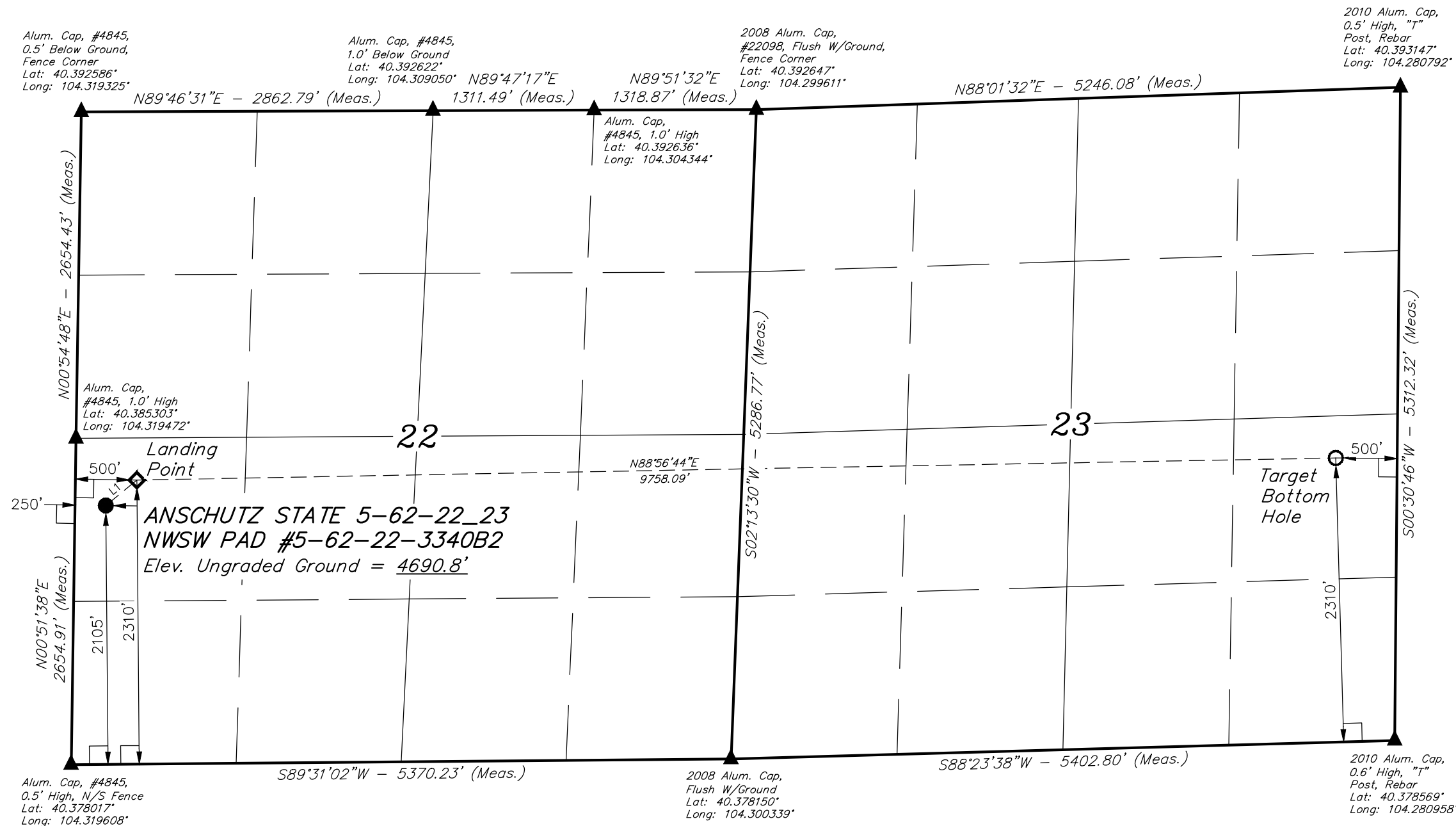
**NW 1/4 SW 1/4, SECTION 22, T5N, R62W, 6th P.M.  
WELD COUNTY, COLORADO**

## BASIS OF BEARINGS

### BASIS OF BEARINGS IS A G.P.S. OBSERVATION

## BASIS OF ELEVATION

SPOT ELEVATION LOCATED AT THE NORTHEAST CORNER OF SECTION 24, T5N, R62W, 6th P.M. TAKEN FROM THE POINT OF ROCKS, QUADRANGLE, COLORADO, WELD COUNTY, 7.5 MINUTE QUAD (TOPOGRAPHIC MAP) PUBLISHED BY THE UNITED STATES DEPARTMENT OF THE INTERIOR, GEOLOGICAL SURVEY. SAID ELEVATION IS MARKED AS BEING 4530 FEET.



LINE TABLE		
LINE	DIRECTION	LENGTH
L1	N50°41'51"E	327.10'






# CERTIFICATE

THIS IS TO CERTIFY THAT THE ABOVE PLAT WAS PREPARED FROM FIELD NOTES OF ACTUAL SURVEYS MADE BY ME OR UNDER MY SUPERVISION, AND THAT THE SAME ARE TRUE AND CORRECT TO THE BEST OF MY KNOWLEDGE AND BELIEF.

REGISTERED LAND SURVEYOR  
REGISTRATION NO. 28285  
STATE OF COLORADO

**PDOP = 1.3**

LEGEND:

 = 90° SYMBOL  
 = PROPOSED WELLHEAD.  
 = TARGET BOTTOM HOLE.  
 = LANDING POINT.  
 = SECTION CORNERS LOCATED.

<b>NAD 83 (TARGET BOTTOM HOLE)</b>	<b>NAD 83 (LANDING POINT)</b>	<b>NAD 83 (SURFACE LOCATION)</b>
LATITUDE = 40°23'05.55" (40.384875)	LATITUDE = 40°23'03.73" (40.384369)	LATITUDE = 40°23'01.68" (40.383800)
LONGITUDE = 104°16'57.65" (104.282681)	LONGITUDE = 104°19'03.70" (104.317694)	LONGITUDE = 104°19'06.97" (104.318603)
<b>NAD 27 (TARGET BOTTOM HOLE)</b>	<b>NAD 27 (LANDING POINT)</b>	<b>NAD 27 (SURFACE LOCATION)</b>
LATITUDE = 40°23'05.61" (40.384892)	LATITUDE = 40°23'03.80" (40.384389)	LATITUDE = 40°23'01.75" (40.383819)
LONGITUDE = 104°16'55.83" (104.282175)	LONGITUDE = 104°19'01.88" (104.317189)	LONGITUDE = 104°19'05.14" (104.318094)
<b>STATE PLANE NAD 83 (COLORADO NORTH)</b>	<b>STATE PLANE NAD 83 (COLORADO NORTH)</b>	<b>STATE PLANE NAD 83 (COLORADO NORTH)</b>
N: 1385377.60 E: 3339100.82	N: 1385061.91 E: 3329350.37	N: 1384851.26 E: 3329100.24
<b>STATE PLANE NAD 27 (COLORADO NORTH)</b>	<b>STATE PLANE NAD 27 (COLORADO NORTH)</b>	<b>STATE PLANE NAD 27 (COLORADO NORTH)</b>
N: 385379.33 E: 2339250.81	N: 385063.64 E: 2329500.34	N: 384852.99 E: 2329250.22



**UELS, LLC**  
Corporate Office \* 85 South 200 East  
Vernal, UT 84078 \* (435) 789-1017

SURVEYED BY: DALLAS NIELSEN, B.C.	DATE: 03-24-15
-----------------------------------	----------------

DRAWN BY: K.B.		DATE DRAWN: 04-06-15	
----------------	--	----------------------	--

SCALE: 1" = 1000'	REVISED: 00-00-00
-------------------	-------------------

## WELL LOCATION PLAT