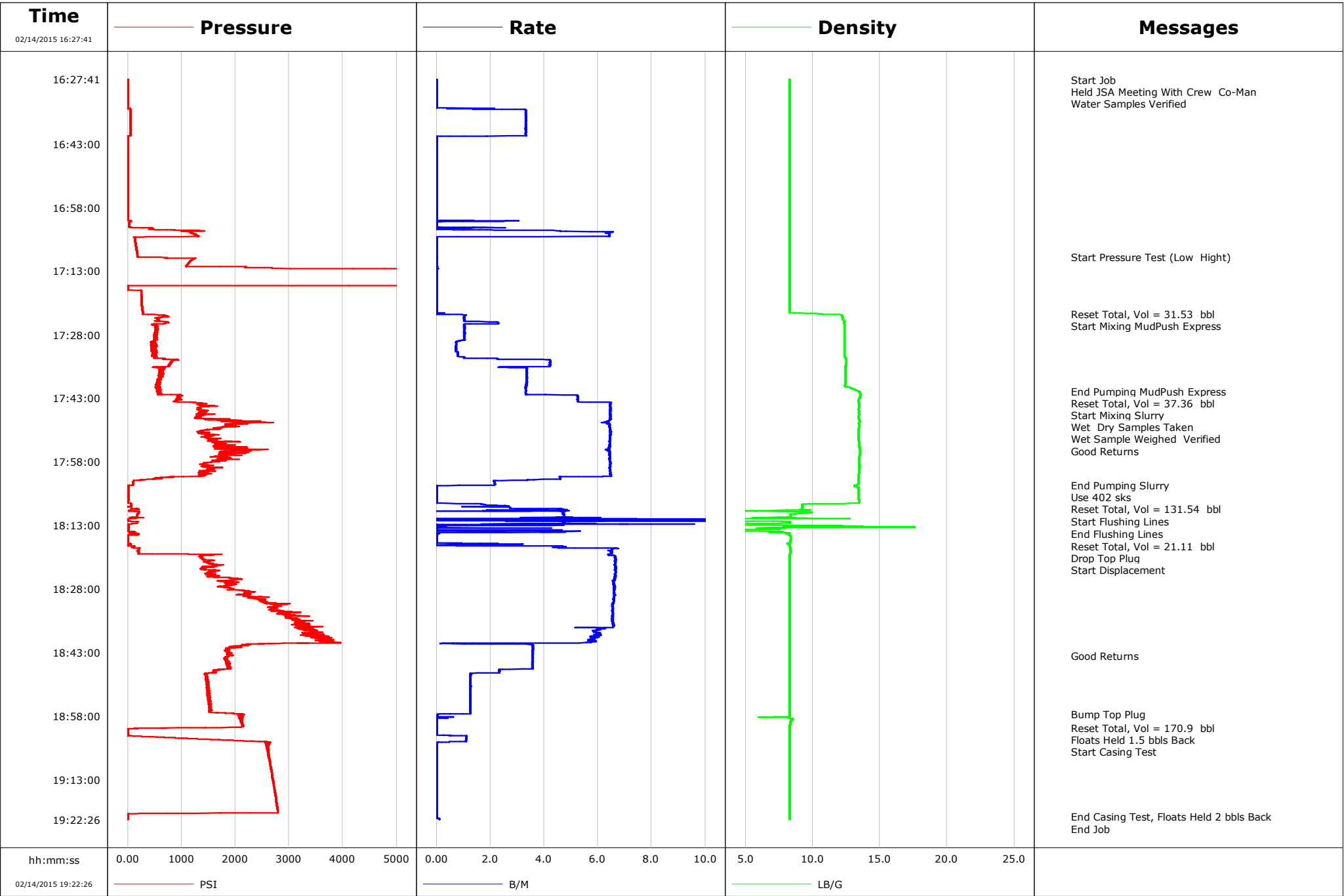


Well	Ruhl 1I-32H	Client	Encana USA
Field	DJ	SIR No.	CWJN-00850
Engineer	Jason Holt	Job Type	4 1/2" Production
Country	United States	Job Date	02-14-2015



Cementing Service Report

				Customer Encana USA			Job Number CWJN-00850			
Well Ruhl 1L-32H 0631588851			Location (legal) E135			Schlumberger Location Cheyenne			Job Start Feb/14/2015	
Field DJ		Formation Name/Type Dirty-Sandstone		Deviation deg		Bit Size 6.1 in		Well MD 11675.0 ft		Well TVD 7160.0 ft
County Weld		State/Province Colorado		BHP psi		BHST 215 degF		BHCT 215 degF		Pore Press. Gradient lb/gal
Well Master 0631588851		API/UWI 05123402750000								
Rig Name E135		Drilled For Oil		Service Via Land		Casing/ Liner				
						Depth, ft		Size, in		Weight, lb/ft
Offshore Zone		Well Class New		Well Type Development		11479.0		4.5		13.5
						0.0		0.0		0.0
Drilling Fluid Type Bentonite		Max. Density 10.70 lb/gal		Plastic Viscosity cP		Tubing/ Drill Pipe				
						T/D		Depth, ft		Size, in
Service Line Cementing		Job Type 4 1/2" Production								
Max. Allowed Tub. Press 10630 psi		Max. Allowed Ann. Press 7768 psi		WH Connection 4 1/2"		Perforations/Open Hole				
						Top, ft		Bottom, ft		shot/ft
						ft		ft		
						ft		ft		
						ft		ft		
						Treat Down Casing		Displacement 170.9 bbl		Packer Type
										Packer Depth ft
						Tubing Vol. bbl		Casing Vol. 171.0 bbl		Annular Vol. bbl
										Openhole Vol. bbl
Casing/Tubing Secured <input checked="" type="checkbox"/>		1 Hole Vol. Circulated prior to Cement <input checked="" type="checkbox"/>				Casing Tools		Squeeze Job		
Lift Pressure 9744 psi						Shoe Type Float		Squeeze Type		
Pipe Rotated <input type="checkbox"/>		Pipe Reciprocated <input type="checkbox"/>				Shoe Depth 11479.0 ft		Tool Type		
No. Centralizers 29		Top Plugs 1		Bottom Plugs		Stage Tool Type		Tool Depth ft		
Cement Head Type Single						Stage Tool Depth ft		Tail Pipe Size in		
Job Scheduled For Feb/14/2015		Arrived on Location Feb/14/2015		Leave Location Feb/14/2015		Collar Type Float		Tail Pipe Depth ft		
						Collar Depth 11474.0 ft		Sqz. Total Vol. bbl		
Date	Time 24-hr clock	Treating Pressure PSI	Flow Rate B/M	Density LB/G	Volume BBL	Message				
02/14/2015	16:27:41	5	0.0	8.31	0.0	Started Acquisition				
02/14/2015	16:27:52	5	0.0	8.31	0.0	Start Job				
02/14/2015	16:27:54	5	0.0	8.31	0.0	Held JSA Meeting With Crew Co-Man				
02/14/2015	16:28:05	5	0.0	8.31	0.0	Water Samples Verified				
02/14/2015	16:28:51	5	0.0	8.31	0.0					
02/14/2015	16:30:01	5	0.0	8.31	0.0					
02/14/2015	16:31:11	5	0.0	8.31	0.0					
02/14/2015	16:32:21	5	0.0	8.31	0.0					
02/14/2015	16:33:31	5	0.0	8.31	0.0					
02/14/2015	16:34:41	7	0.6	8.31	0.0					
02/14/2015	16:35:51	51	3.3	8.31	0.0					
02/14/2015	16:37:01	52	3.3	8.31	0.0					
02/14/2015	16:38:11	50	3.3	8.31	0.0					
02/14/2015	16:39:21	51	3.3	8.31	0.0					
02/14/2015	16:40:31	51	3.3	8.31	0.0					
02/14/2015	16:41:41	6	0.0	8.31	0.0					
02/14/2015	16:42:51	5	0.0	8.31	0.0					
02/14/2015	16:44:01	2	0.0	8.31	0.0					
02/14/2015	16:45:11	3	0.0	8.31	0.0					
02/14/2015	16:46:21	3	0.0	8.31	0.0					
02/14/2015	16:47:31	2	0.0	8.31	0.0					

Well			Field	Job Start		Customer		Job Number
Ruhl 1I-32H 0631588851			DJ	Feb/14/2015		Encana USA		CWJN-00850
Date	Time 24-hr clock	Treating Pressure PSI	Flow Rate B/M	Density LB/G	Volume BBL	Message		
02/14/2015	16:49:51	2	0.0	8.31	0.0			
02/14/2015	16:51:01	2	0.0	8.31	0.0			
02/14/2015	16:52:11	2	0.0	8.31	0.0			
02/14/2015	16:53:21	2	0.0	8.31	0.0			
02/14/2015	16:54:31	2	0.0	8.31	0.0			
02/14/2015	16:55:41	2	0.0	8.31	0.0			
02/14/2015	16:56:51	2	0.0	8.31	0.0			
02/14/2015	16:58:01	2	0.0	8.31	0.0			
02/14/2015	16:59:11	2	0.0	8.31	0.0			
02/14/2015	17:00:21	2	0.0	8.31	0.0			
02/14/2015	17:01:31	35	0.0	8.31	0.5			
02/14/2015	17:02:41	73	1.5	8.31	0.6			
02/14/2015	17:03:51	1167	6.3	8.31	3.8			
02/14/2015	17:05:01	146	0.0	8.31	10.2			
02/14/2015	17:06:11	147	0.0	8.31	10.2			
02/14/2015	17:07:21	158	0.0	8.31	10.2			
02/14/2015	17:08:31	171	0.0	8.32	10.2			
02/14/2015	17:09:40	186	0.0	8.31	10.2	Start Pressure Test (Low Hight)		
02/14/2015	17:09:41	187	0.0	8.31	10.2			
02/14/2015	17:10:51	1148	0.0	8.31	10.2			
02/14/2015	17:12:01	2197	0.0	8.31	10.2			
02/14/2015	17:13:11	5417	0.0	8.32	10.2			
02/14/2015	17:14:21	5350	0.0	8.32	10.2			
02/14/2015	17:15:31	5281	0.0	8.32	10.2			
02/14/2015	17:16:41	5	0.0	8.32	10.2			
02/14/2015	17:17:51	255	0.0	8.31	0.0			
02/14/2015	17:19:01	258	0.0	8.31	0.0			
02/14/2015	17:20:11	263	0.0	8.31	0.0			
02/14/2015	17:21:21	272	0.0	8.31	0.0			
02/14/2015	17:22:31	278	0.0	8.31	0.0			
02/14/2015	17:23:07	279	0.0	10.70	0.0	Reset Total, Vol = 31.53 bbl		
02/14/2015	17:23:10	279	0.0	10.77	0.0	Start Mixing MudPush Express		
02/14/2015	17:23:41	758	1.0	12.21	0.5			
02/14/2015	17:24:51	547	1.1	12.39	1.7			
02/14/2015	17:26:01	518	1.0	12.36	3.6			
02/14/2015	17:27:11	520	1.0	12.36	4.8			
02/14/2015	17:28:21	508	1.0	12.36	6.0			
02/14/2015	17:29:31	449	0.8	12.37	7.2			
02/14/2015	17:30:41	545	0.7	12.37	8.0			
02/14/2015	17:31:51	490	0.7	12.37	8.9			
02/14/2015	17:33:01	480	0.8	12.35	9.8			
02/14/2015	17:34:11	834	4.2	12.52	12.4			
02/14/2015	17:35:21	772	4.2	12.45	17.4			
02/14/2015	17:36:31	612	3.3	12.43	21.3			
02/14/2015	17:37:41	647	3.4	12.43	25.2			
02/14/2015	17:38:51	564	3.4	12.43	29.1			
02/14/2015	17:40:01	558	3.3	12.39	33.0			
02/14/2015	17:41:11	575	3.3	13.30	36.9			
02/14/2015	17:41:20	614	3.3	13.43	0.1	End Pumping MudPush Express		
02/14/2015	17:41:32	607	3.3	13.49	0.7	Start Mixing Slurry		
02/14/2015	17:42:21	1016	5.2	13.57	3.7			
02/14/2015	17:43:31	909	5.2	13.41	9.8			
02/14/2015	17:44:41	1484	6.5	13.47	16.9			
02/14/2015	17:45:09	1355	6.5	13.46	19.9	Wet Dry Samples Taken		

Well			Field	Job Start		Customer	Job Number
Ruhl 1I-32H 0631588851			DJ	Feb/14/2015		Encana USA	CWJN-00850
Date	Time 24-hr clock	Treating Pressure PSI	Flow Rate B/M	Density LB/G	Volume BBL	Message	
02/14/2015	17:46:00	1446	6.5	13.46	25.4	Wet Sample Weighed Verified	
02/14/2015	17:47:01	1413	6.4	13.45	32.0		
02/14/2015	17:48:11	2005	6.4	13.48	39.5		
02/14/2015	17:49:21	1888	6.4	13.48	47.0		
02/14/2015	17:50:31	1452	6.5	13.44	54.5	Good Returns	
02/14/2015	17:51:41	1510	6.5	13.40	62.0		
02/14/2015	17:52:51	1541	6.4	13.44	69.5		
02/14/2015	17:54:01	1876	6.4	13.48	77.1		
02/14/2015	17:55:11	2028	6.3	13.50	84.5		
02/14/2015	17:56:21	1928	6.4	13.50	92.0		
02/14/2015	17:57:31	1756	6.4	13.48	99.5		
02/14/2015	17:58:41	1384	6.5	13.49	107.1		
02/14/2015	17:59:51	1543	6.4	13.47	114.6		
02/14/2015	18:01:01	1412	6.5	13.43	122.1		
02/14/2015	18:02:11	316	3.6	13.41	128.4		
02/14/2015	18:03:21	98	2.2	13.39	131.2		
02/14/2015	18:03:29	98	2.2	13.26	131.5	End Pumping Slurry	
02/14/2015	18:03:30	96	2.2	13.26	131.5	Use 402 sks	
02/14/2015	18:03:32	43	1.4	13.13	131.6	Reset Total, Vol = 131.54 bbl	
02/14/2015	18:03:50	17	0.0	13.25	131.7	Start Flushing Lines	
02/14/2015	18:04:31	7	0.0	13.39	0.0		
02/14/2015	18:05:41	11	0.0	13.42	0.0		
02/14/2015	18:06:51	10	0.0	13.45	0.0		
02/14/2015	18:08:01	67	1.7	9.27	0.3		
02/14/2015	18:09:11	201	4.7	9.23	3.3		
02/14/2015	18:10:21	187	4.7	8.46	8.2		
02/14/2015	18:11:31	6	0.9	1.14	13.7		
02/14/2015	18:12:41	11	6.8	2.54	18.8		
02/14/2015	18:13:51	15	0.0	7.54	19.9		
02/14/2015	18:15:00	45	0.0	8.31	21.4	End Flushing Lines	
02/14/2015	18:15:01	45	0.0	8.29	21.4	Reset Total, Vol = 21.11 bbl	
02/14/2015	18:16:11	7	0.0	8.36	0.0		
02/14/2015	18:16:35	7	0.0	8.36	0.0	Drop Top Plug	
02/14/2015	18:16:38	7	0.0	8.36	0.0	Start Displacement	
02/14/2015	18:17:21	60	2.6	8.16	0.2		
02/14/2015	18:18:31	206	6.6	8.33	4.4		
02/14/2015	18:19:41	204	6.5	8.33	12.0		
02/14/2015	18:20:51	1386	6.6	8.32	19.6		
02/14/2015	18:22:01	1509	6.6	8.32	27.4		
02/14/2015	18:23:11	1369	6.7	8.32	35.2		
02/14/2015	18:24:21	1528	6.6	8.32	42.9		
02/14/2015	18:25:31	1926	6.6	8.32	50.7		
02/14/2015	18:26:41	1903	6.6	8.32	58.4		
02/14/2015	18:27:51	1909	6.6	8.32	66.1		
02/14/2015	18:29:01	2168	6.6	8.32	73.8		
02/14/2015	18:30:11	2293	6.6	8.32	81.5		
02/14/2015	18:31:21	2545	6.6	8.32	89.1		
02/14/2015	18:32:31	2691	6.6	8.32	96.8		
02/14/2015	18:33:41	2925	6.6	8.32	104.4		
02/14/2015	18:34:51	2951	6.5	8.32	112.1		
02/14/2015	18:36:01	3244	6.6	8.32	119.7		
02/14/2015	18:37:11	3233	5.9	8.32	127.3		
02/14/2015	18:38:21	3377	6.1	8.32	134.3		
02/14/2015	18:39:31	3793	5.8	8.32	141.3		

Well			Field	Job Start		Customer		Job Number
Ruhl 11-32H 0631588851			DJ	Feb/14/2015		Encana USA		CWJN-00850
Date	Time 24-hr clock	Treating Pressure PSI	Flow Rate B/M	Density LB/G	Volume BBL	Message		
02/14/2015	18:41:51	2002	3.6	8.32	151.5			
02/14/2015	18:43:01	1936	3.6	8.32	155.7			
02/14/2015	18:43:50	1893	3.6	8.32	158.6	Good Returns		
02/14/2015	18:44:11	1838	3.6	8.32	159.8			
02/14/2015	18:45:21	1859	3.6	8.32	164.0			
02/14/2015	18:46:31	1864	3.6	8.32	168.2			
02/14/2015	18:47:41	1572	2.3	8.32	171.4			
02/14/2015	18:48:51	1461	1.3	8.32	173.1			
02/14/2015	18:50:01	1505	1.3	8.32	174.6			
02/14/2015	18:51:11	1465	1.3	8.31	176.1			
02/14/2015	18:52:21	1502	1.3	8.32	177.5			
02/14/2015	18:53:31	1534	1.3	8.32	179.0			
02/14/2015	18:54:41	1496	1.3	8.32	180.5			
02/14/2015	18:55:51	1530	1.3	8.32	182.0			
02/14/2015	18:57:01	1519	1.3	8.32	183.4			
02/14/2015	18:57:34	2058	0.1	8.32	184.0	Bump Top Plug		
02/14/2015	18:58:11	2088	0.0	8.32	184.1			
02/14/2015	18:59:21	2125	0.0	8.36	184.1			
02/14/2015	19:00:31	2127	0.0	8.32	184.1			
02/14/2015	19:00:44	1439	0.0	8.32	184.1	Reset Total, Vol = 170.9 bbl		
02/14/2015	19:01:41	4	0.0	8.32	184.1			
02/14/2015	19:01:50	5	0.0	8.32	184.1	Floats Held 1.5 bbls Back		
02/14/2015	19:02:51	285	1.1	8.32	184.4			
02/14/2015	19:04:01	2465	1.1	8.32	185.7			
02/14/2015	19:04:09	2610	0.1	8.32	185.8	Start Casing Test		
02/14/2015	19:05:11	2617	0.0	8.32	185.8			
02/14/2015	19:06:21	2600	0.0	8.32	185.8			
02/14/2015	19:07:31	2628	0.0	8.32	185.8			
02/14/2015	19:08:41	2641	0.0	8.32	185.8			
02/14/2015	19:09:51	2655	0.0	8.32	185.8			
02/14/2015	19:11:01	2673	0.0	8.32	185.8			
02/14/2015	19:12:11	2688	0.0	8.32	185.8			
02/14/2015	19:13:21	2703	0.0	8.32	185.8			
02/14/2015	19:14:31	2719	0.0	8.32	185.8			
02/14/2015	19:15:41	2735	0.0	8.32	185.8			
02/14/2015	19:16:51	2748	0.0	8.32	185.8			
02/14/2015	19:18:01	2763	0.0	8.32	185.8			
02/14/2015	19:19:11	2776	0.0	8.32	185.8			
02/14/2015	19:20:21	2789	0.0	8.32	185.8			
02/14/2015	19:21:31	4	0.0	8.32	185.8			
02/14/2015	19:21:47	5	0.0	8.32	185.8	End Casing Test, Floats Held 2 bbls Back		

Well Ruhl 11-32H 0631588851	Field DJ	Job Start Feb/14/2015	Customer Encana USA	Job Number CWJN-00850
---------------------------------------	--------------------	---------------------------------	-------------------------------	---------------------------------

Post Job Summary

Average Pump Rates, bbl/min					Volume of Fluid Injected, bbl						
Slurry 4.0	N2	Mud	Maximum Rate 12.2		Total Slurry 407.7	Mud 0.0	Spacer 407.7	N2			
Treating Pressure Summary, psi					Breakdown Fluid						
Maximum 5477	Final 4	Average 1179	Bump Plug to 2058	Breakdown	Type Water		Volume 170.9 bbl		Density 8.40 lb/gal		
Avg. N2 Percent %		Designed Slurry Volume 120.0 bbl		Displacement 172.7 bbl		Mix Water Temp 68 degF		Cement Circulated to Surface?	<input type="checkbox"/>	Volume bbl	
								Washed Thru Perfs	<input type="checkbox"/>	To ft	
Customer or Authorized Representative Rich				Schlumberger Supervisor Jason Holt				Circulation Lost	<input type="checkbox"/>	Job Completed	<input checked="" type="checkbox"/>
								-		-	