



Cathedral Energy Services  
1949 North Pyrite Road  
Casper, Wyoming 82604

**155079**

5":100' - MD

2/18/2015 11:31:44 AM

**CATHEDRAL**

**Oper. Company:** Encana Oil & gas (USA) Inc.

**Country:** U.S.A.

**State / Province:** Colorado

**County / Parish:** Weld

**Started:** 02/05/2015 09:00 AM

**API/UWI:** 05-123-40275-00

**Field:** Wattenberg (Codell)

**Well:** Ruhl 1I-32H-B264

**Rig:** Ensign Drilling 135

**Ended:** 02/13/2015 11:00 AM

Gamma Ray  
Section Plane: 180.00  
Magnetic North: 8.24  
Gamma Averaging: 7%

### Personnel

**Day Hand:** K. Wagoner

**Night Hand:** J. Starkey

**Comp. Emp:** Gage Soehner

Maximum Temperature: 215°F

### Location

**Latitude:** 40.101448

**Longitude:** -104.570837

**Elev. GL:** 4997

**Elev. DF:**

**Elev. KB:** 5010

Log and Survey Depths Relative to Kelly Bushing (KB) Depth

### Hole Data

Size	From	To
8-3/4	0	7603
6-1/8	7603	11501

### Casing Data

Size	From	To
9-5/8	0	1155
7	0	7586

### Bit Sizes

Size	From	To
8-3/4	0	7603
6-1/8	7603	11501

### Mud Data

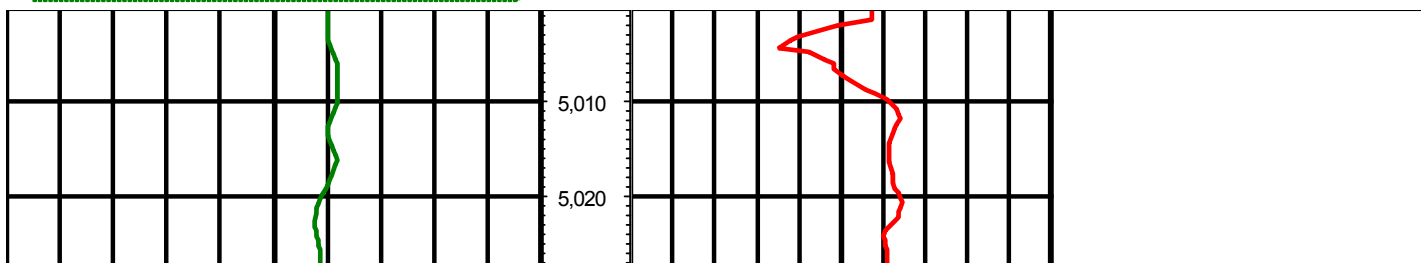
Type	Weight	Density	Viscosity	Rm	Rmf	Rmc	From	To
------	--------	---------	-----------	----	-----	-----	------	----

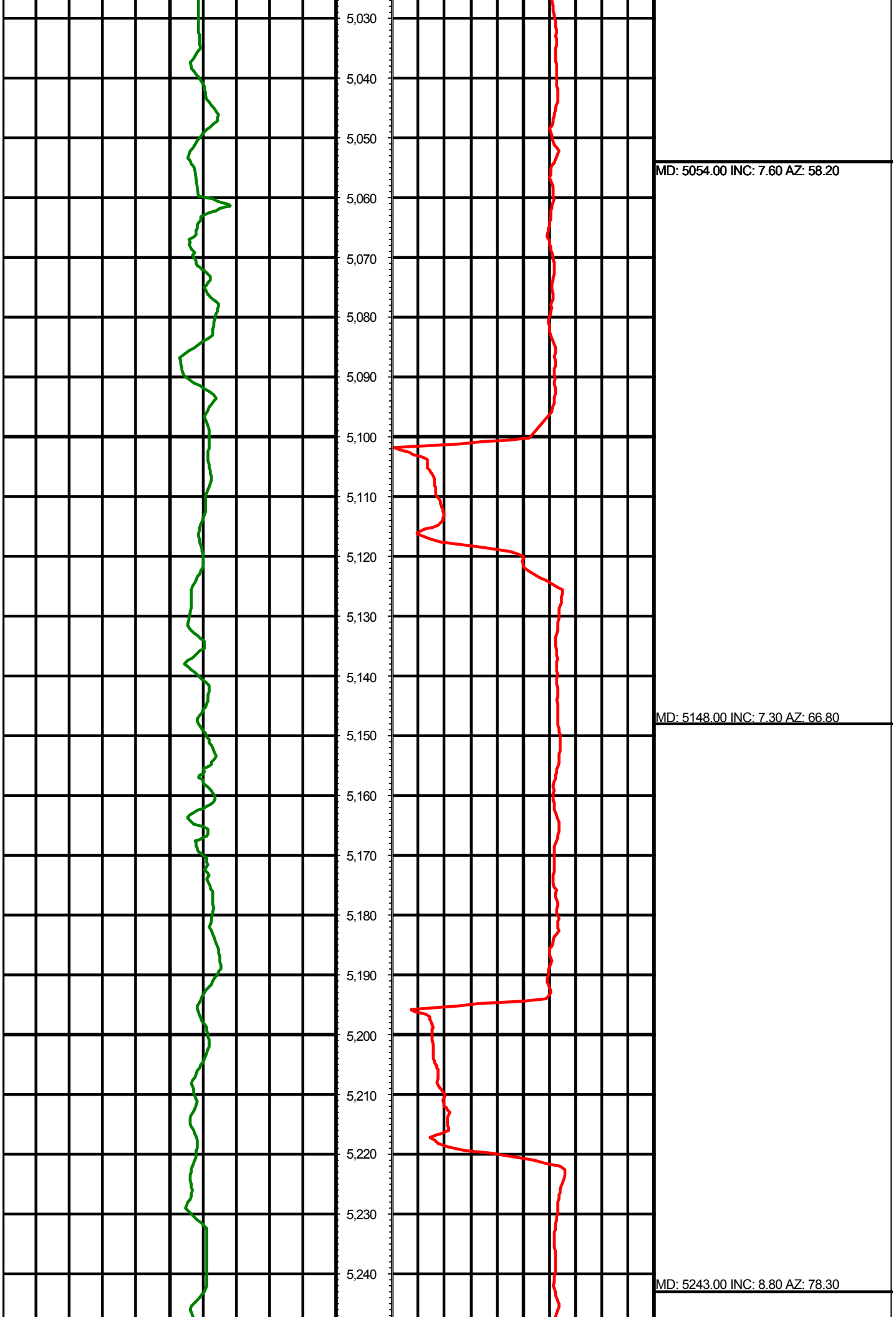
### Tool Run Data

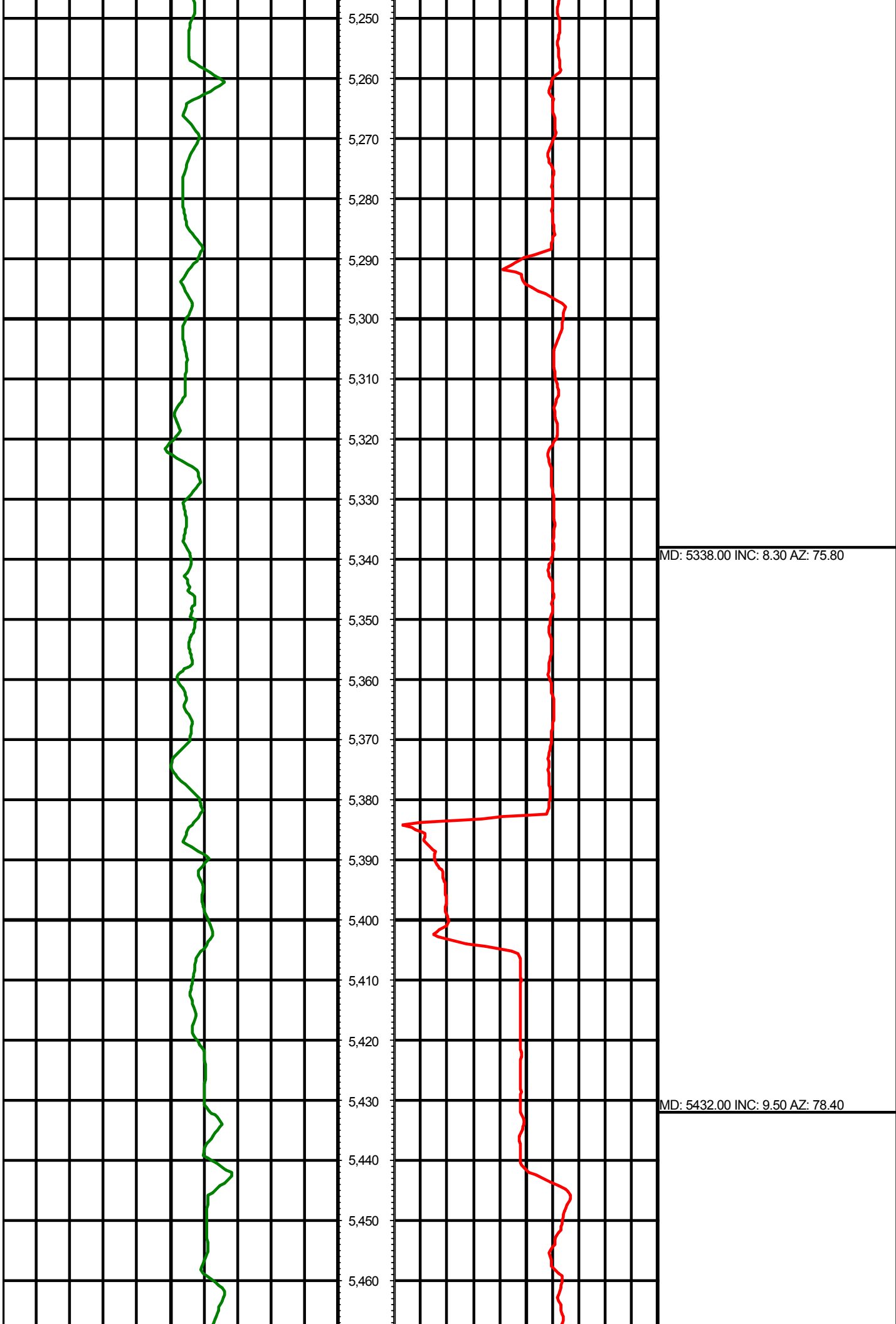
Serial Number	Gamma Offset	Resist. Offset	Start Time	Start Depth	End Time	End Depth
323	40.52	0	2/4/2015 1:00:28 AM	5000	2/7/2015 8:00:28 AM	7603
323	43.16	0	2/9/2015 2:00:20 AM	7603	2/10/2015 5:00:20 AM	8038
281	43.22	0	2/10/2015 7:00:27 AM	8038	2/13/2015 3:00:27 PM	11501

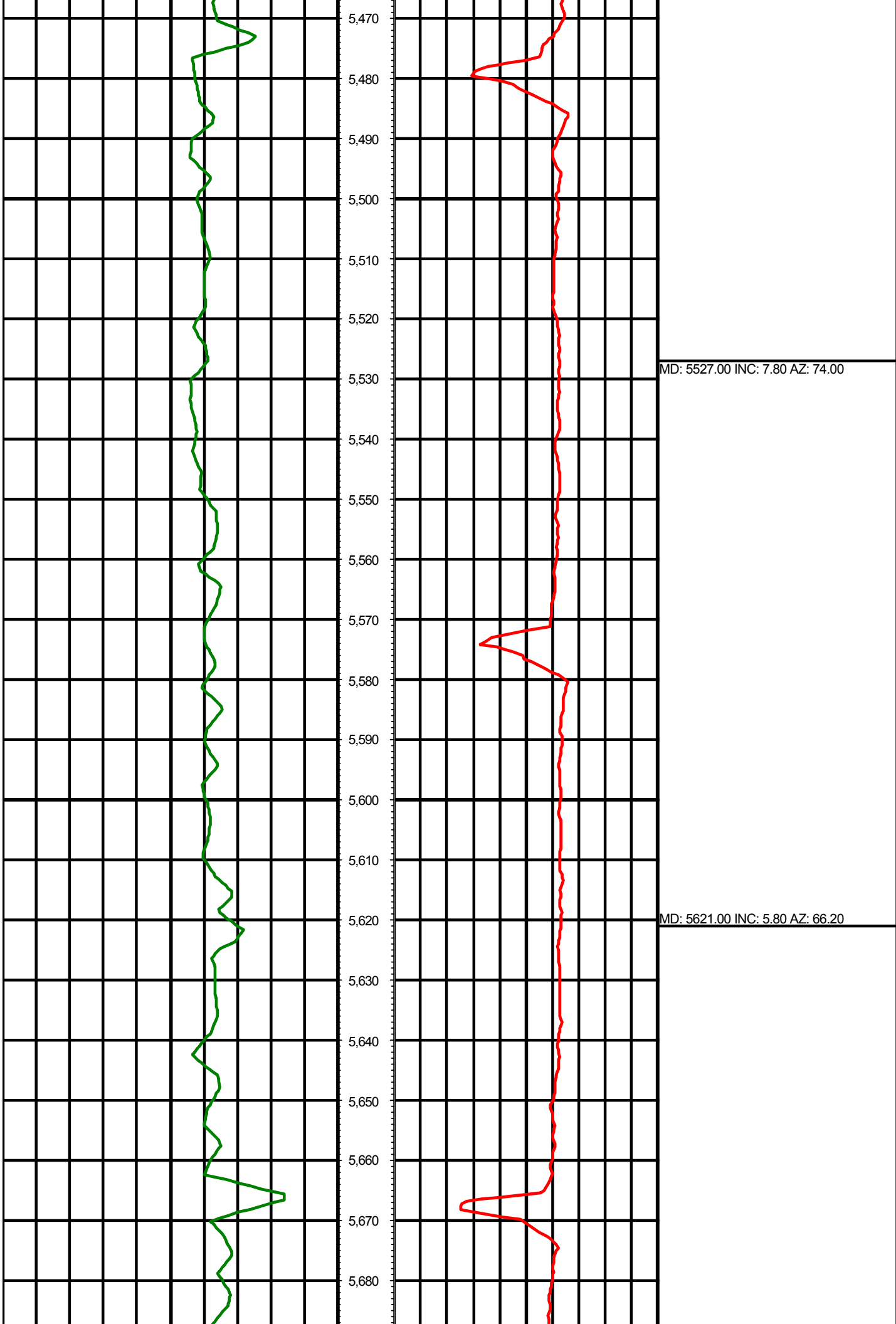
*All interpretations are opinions based on inferences from electrical or other measurements and we cannot and do not guarantee the accuracy or correctness of any interpretation, and we shall not except in the case of gross or willful negligence on our part, be liable or responsible for any loss, cost damages or expenses incurred or sustained by anyone resulting from an interpretation made by any of our officers, agents, or employees.*

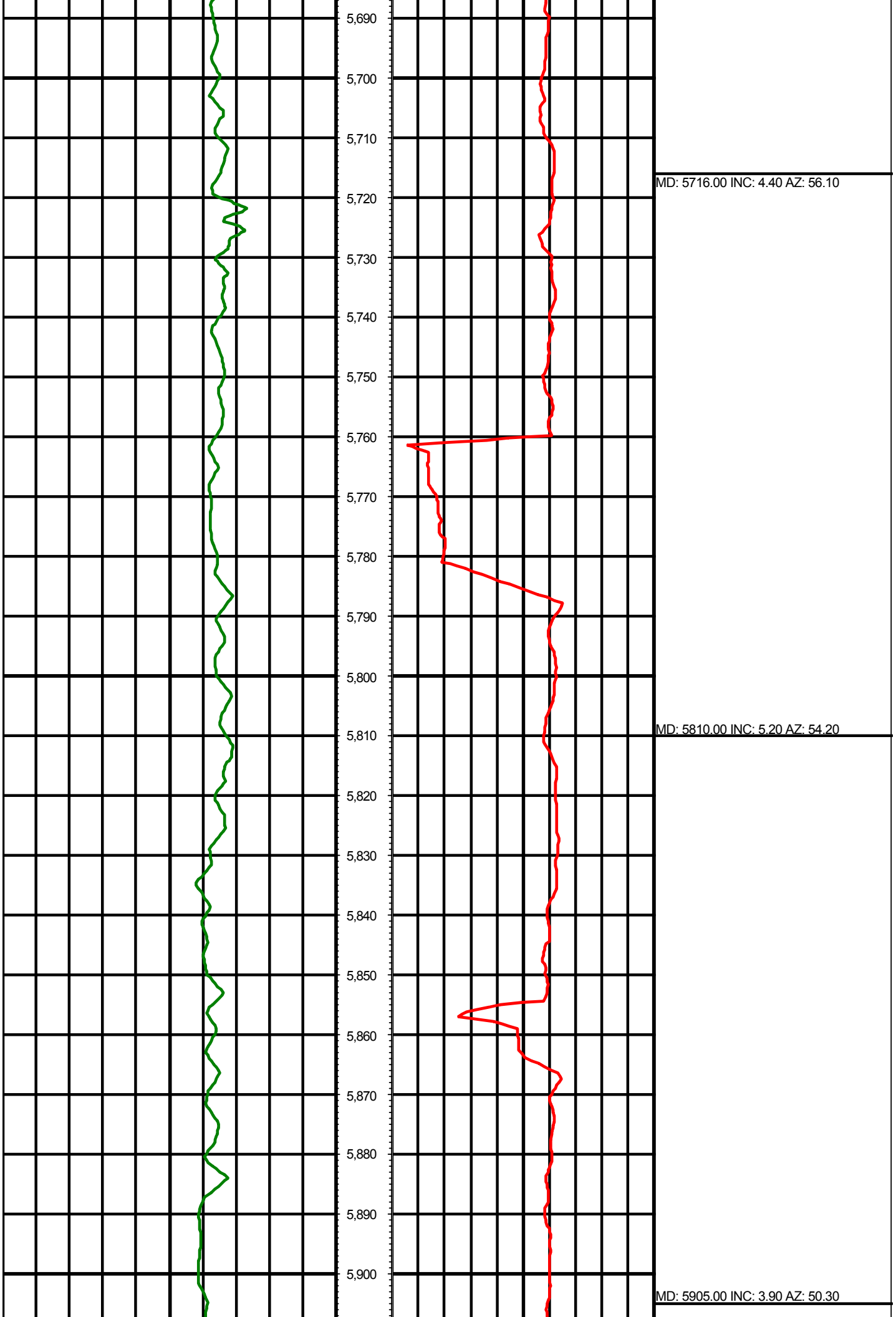
0.00      Gamma Ray (API)      150.00      MD      0.00      ROP (FT/HR)      600.00      Surveys (MD/INC/AZ)  
150.00      2      300.00      FT







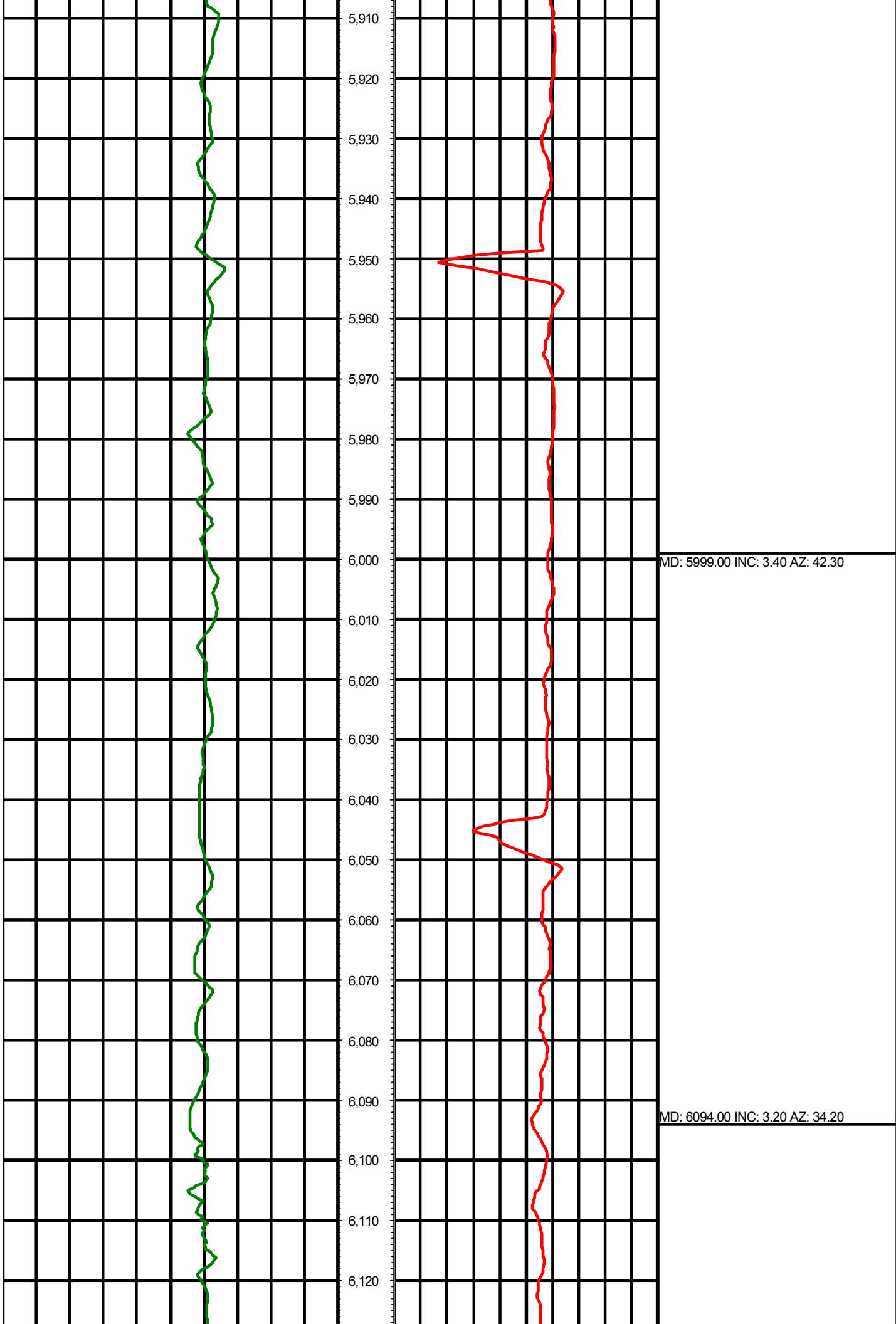


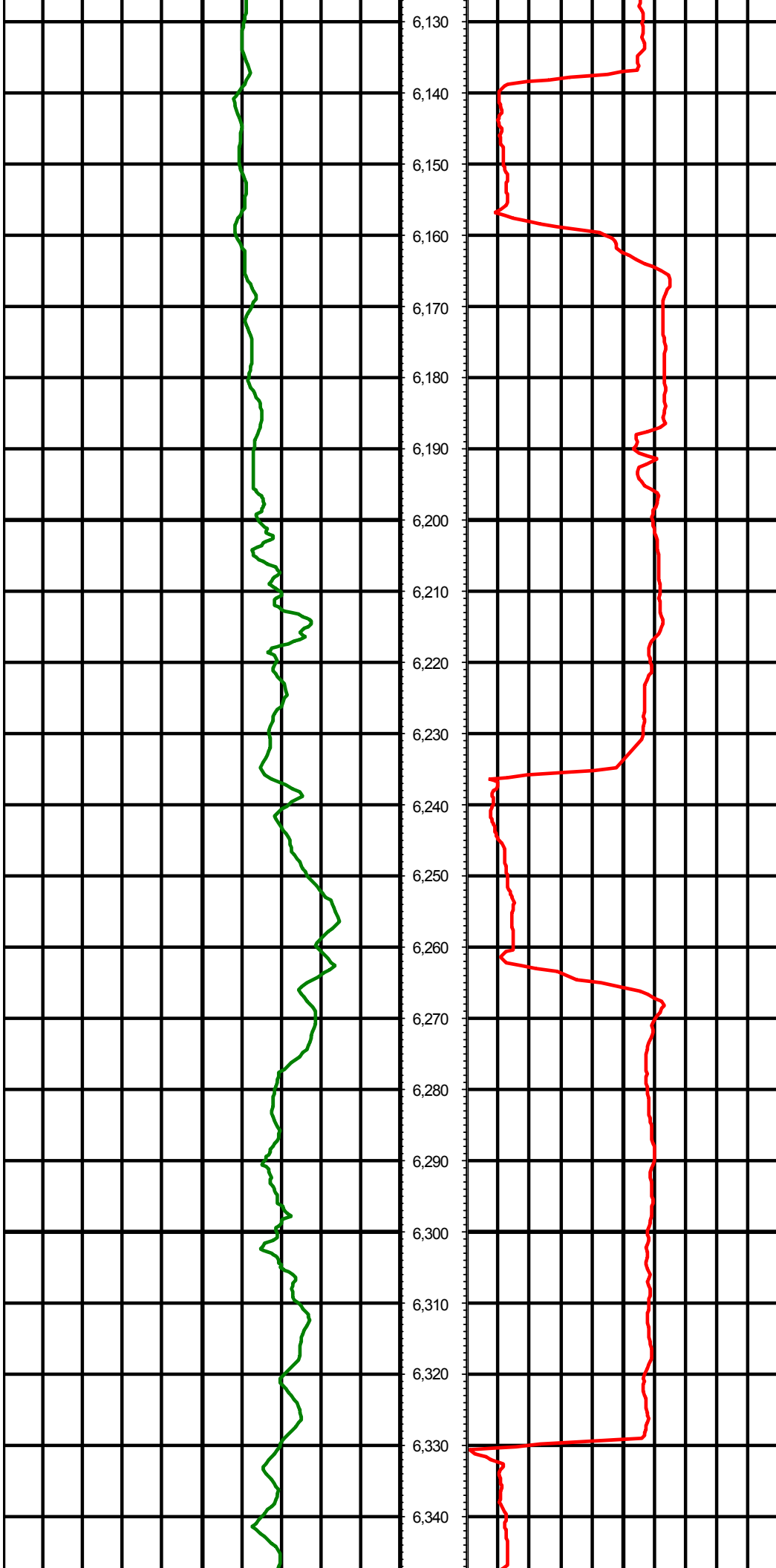


MD: 5716.00 INC: 4.40 AZ: 56.10

MD: 5810.00 INC: 5.20 AZ: 54.20

MD: 5905.00 INC: 3.90 AZ: 50.30

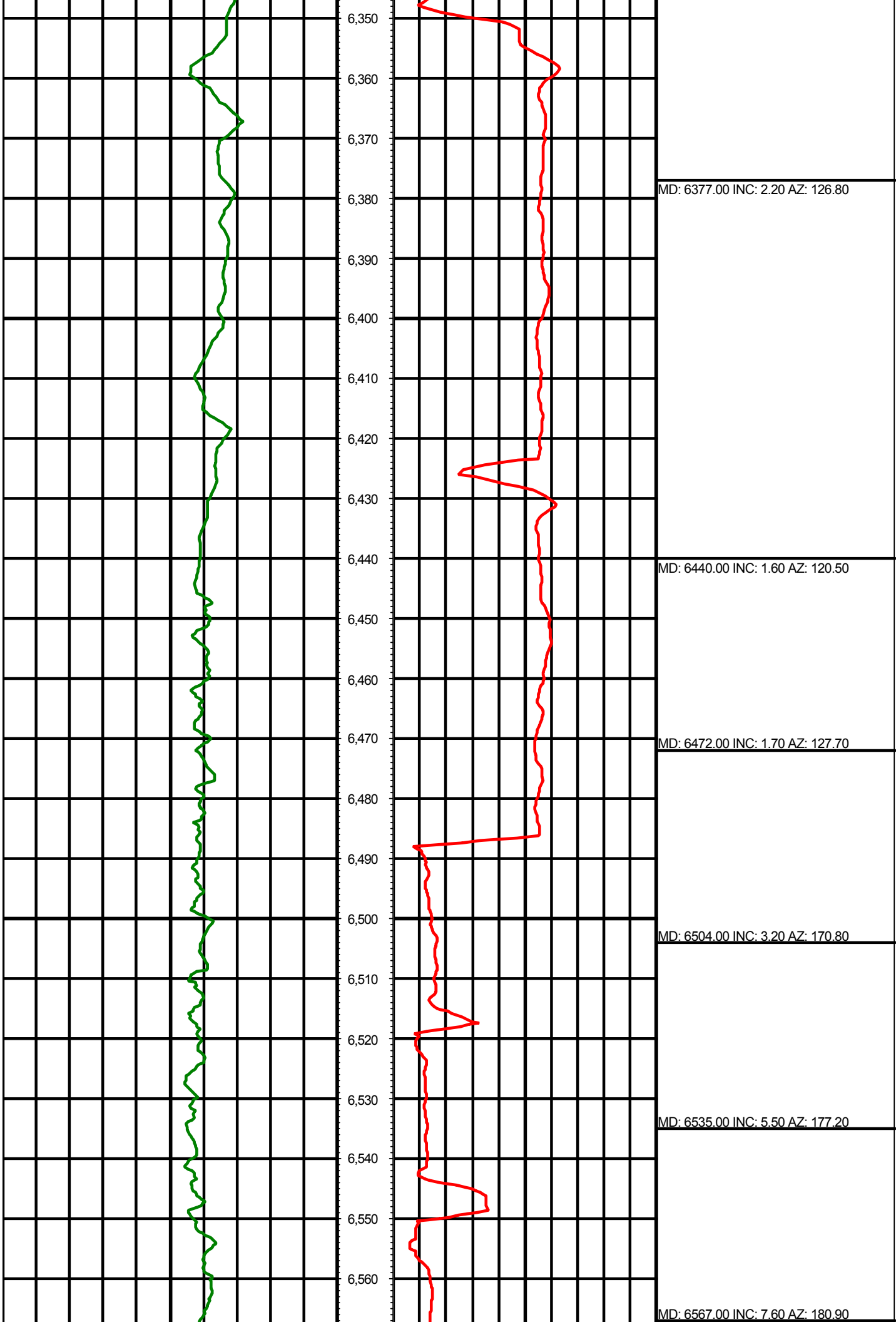




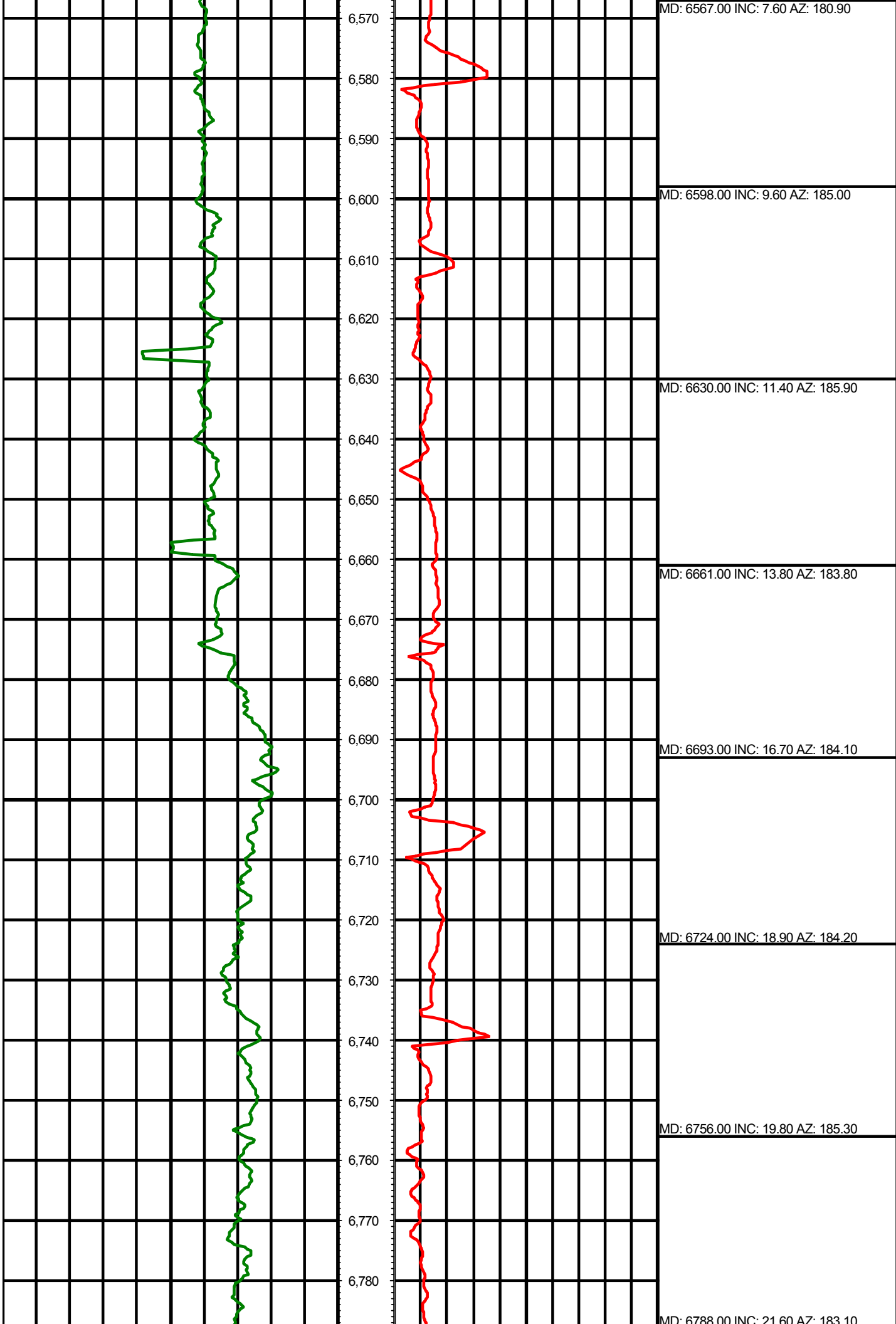
6,130  
6,140  
6,150  
6,160  
6,170  
6,180  
6,190  
6,200  
6,210  
6,220  
6,230  
6,240  
6,250  
6,260  
6,270  
6,280  
6,290  
6,300  
6,310  
6,320  
6,330  
6,340

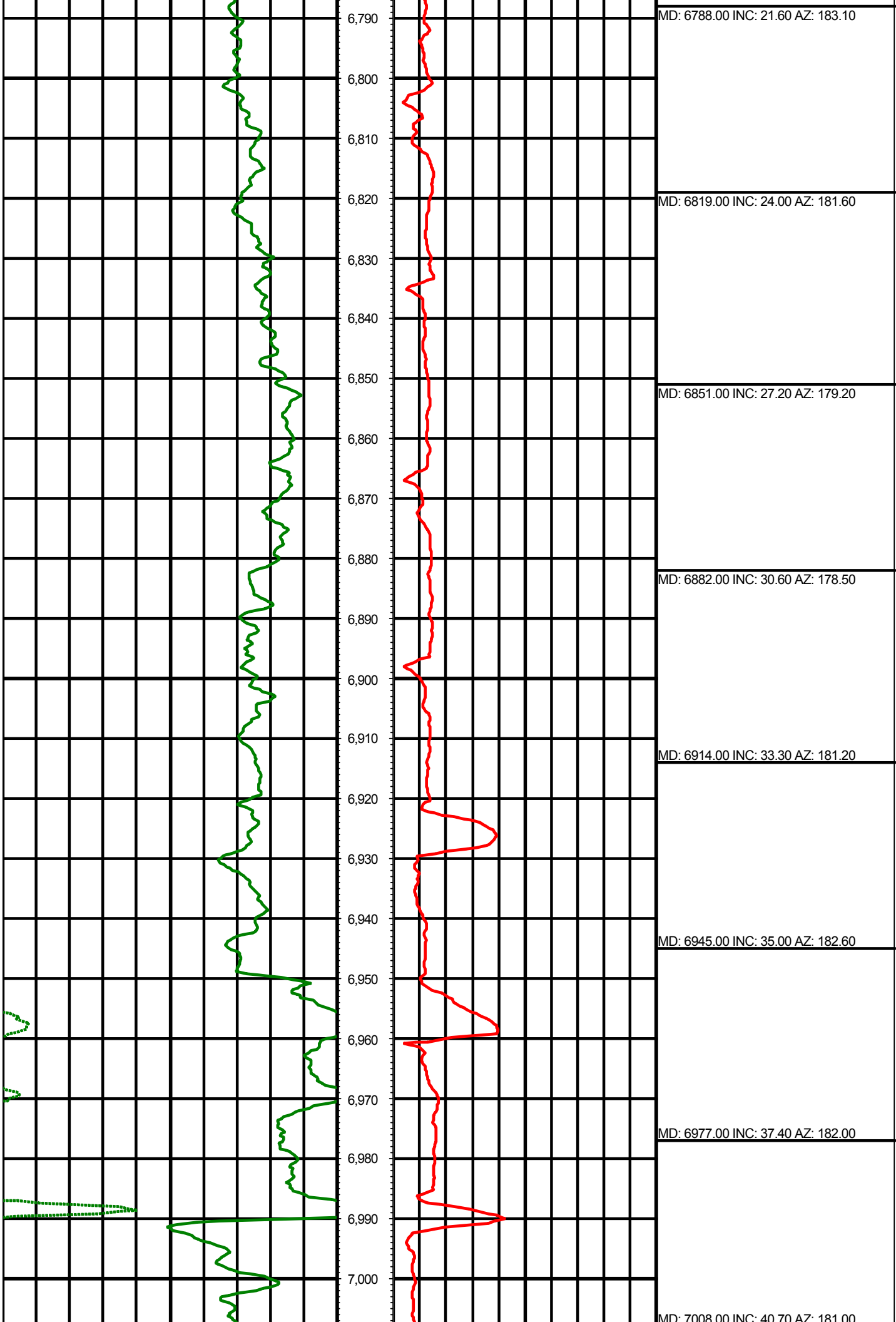
MD: 6188.00 INC: 2.90 AZ: 70.60

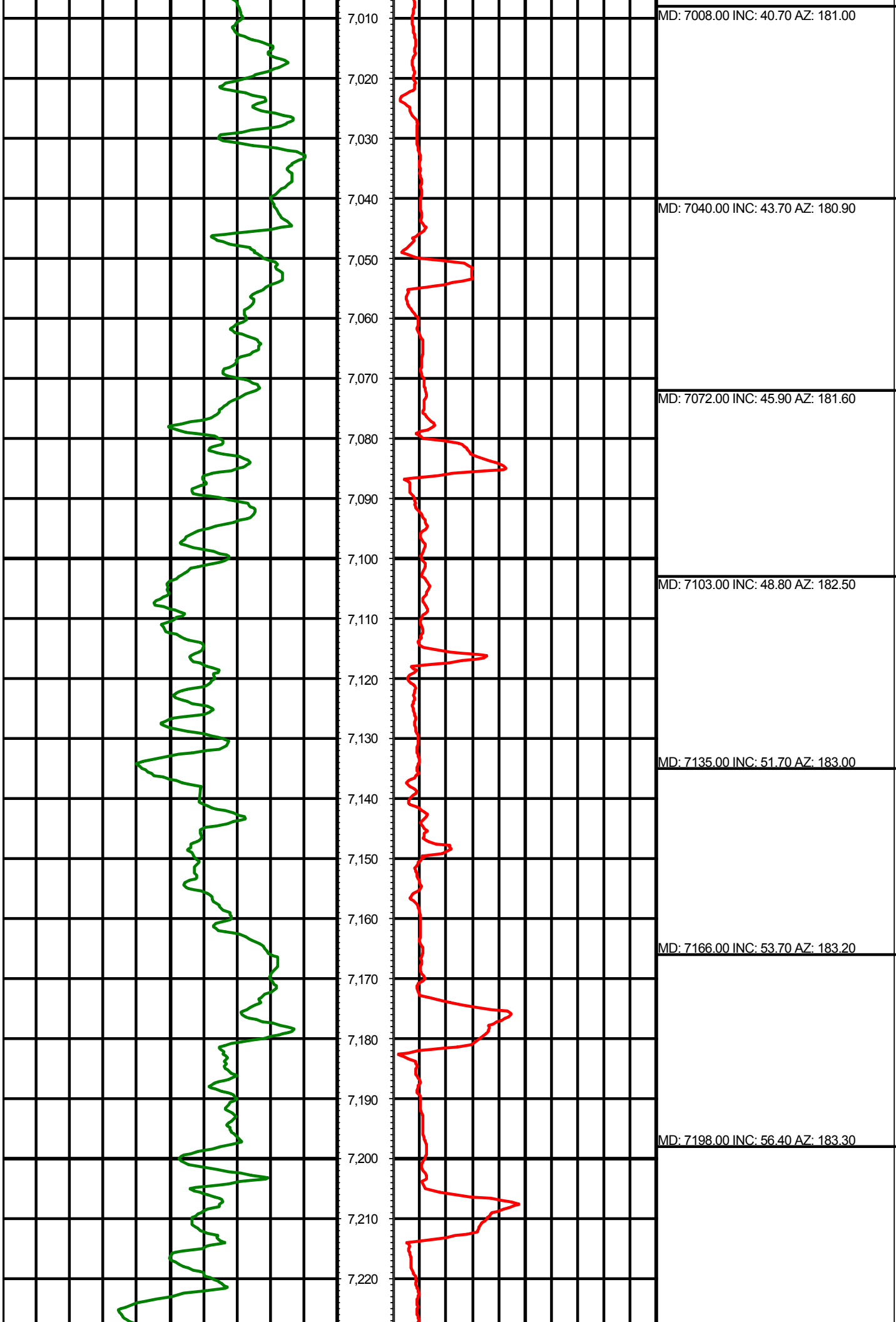
MD: 6283.00 INC: 2.90 AZ: 110.90

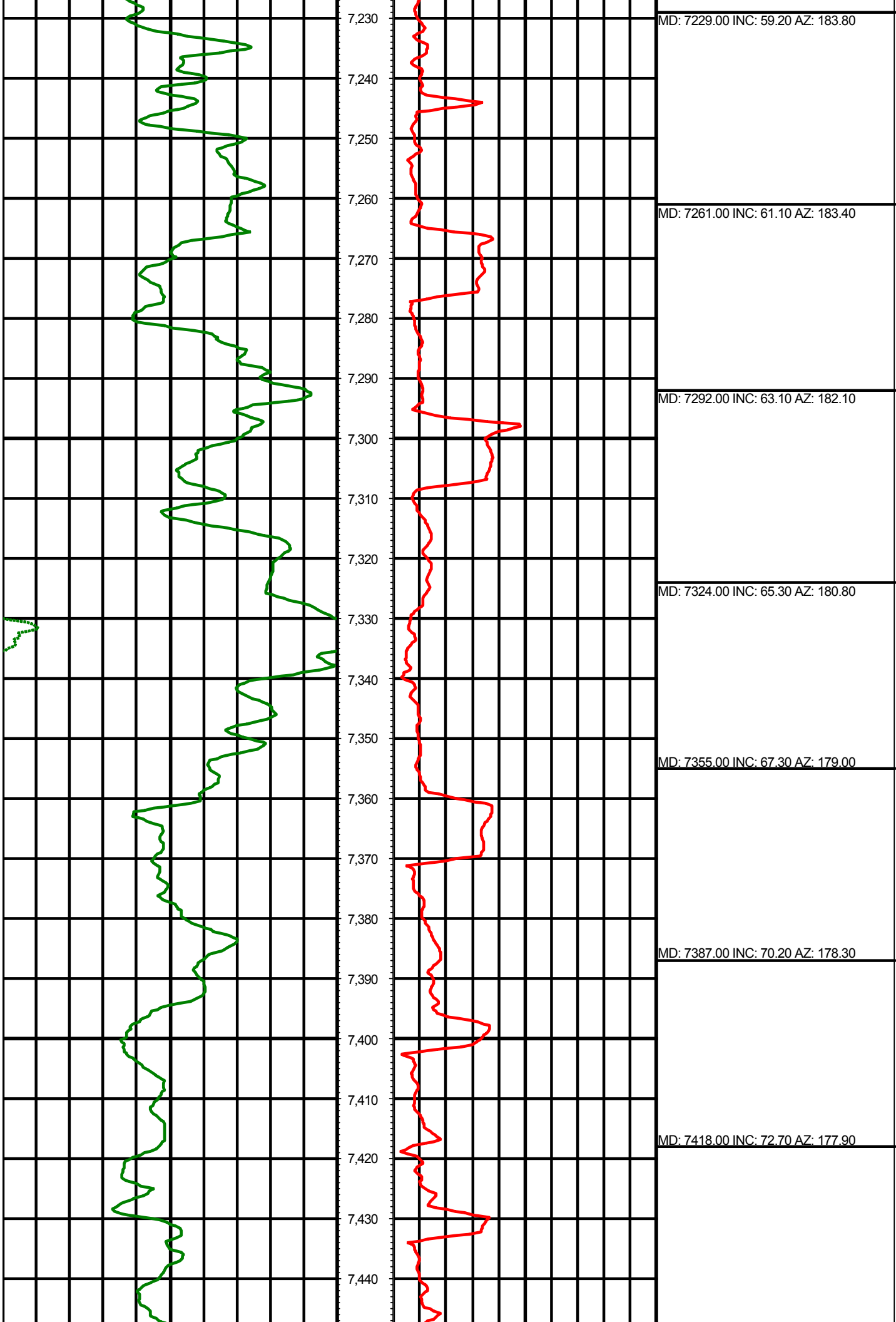


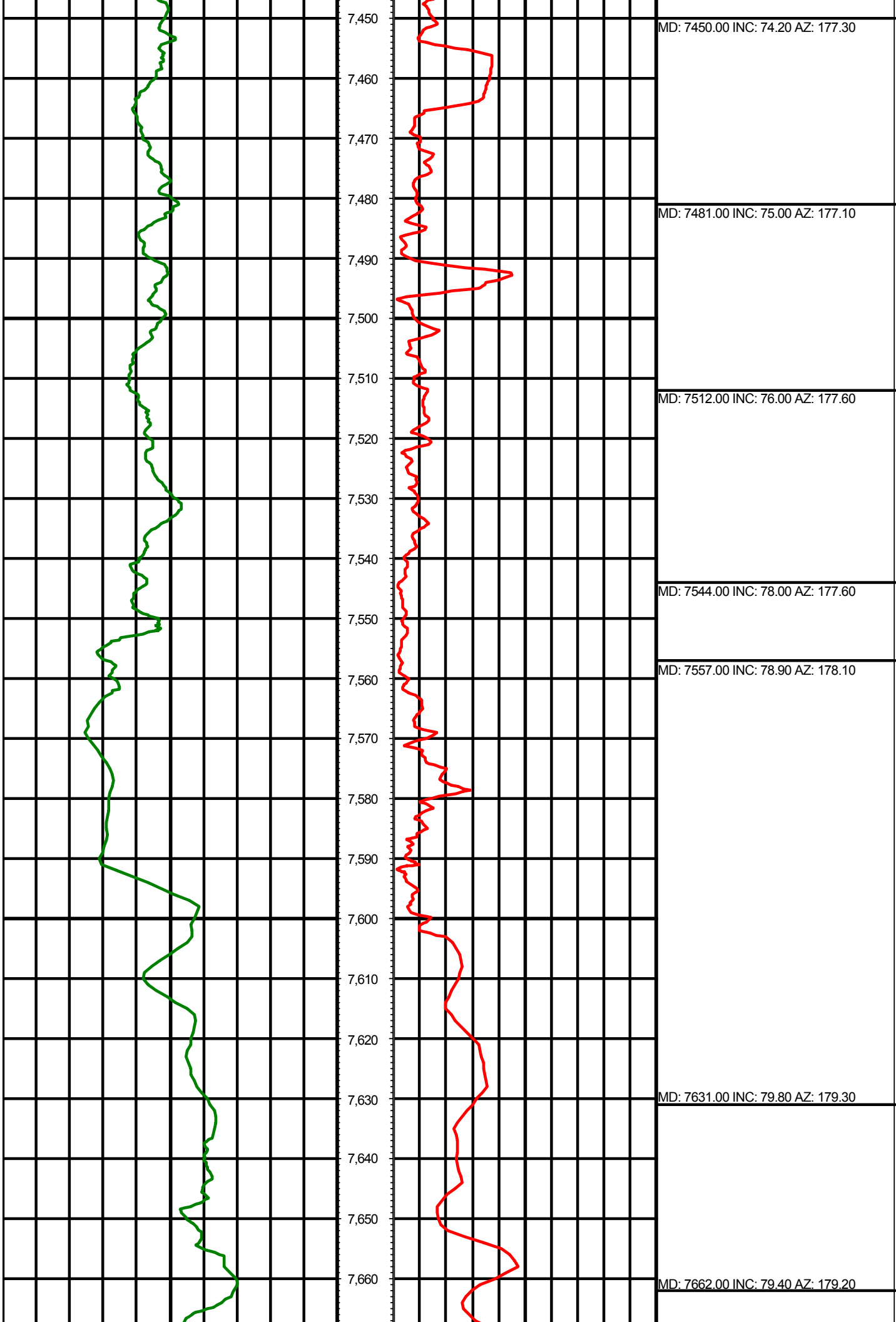


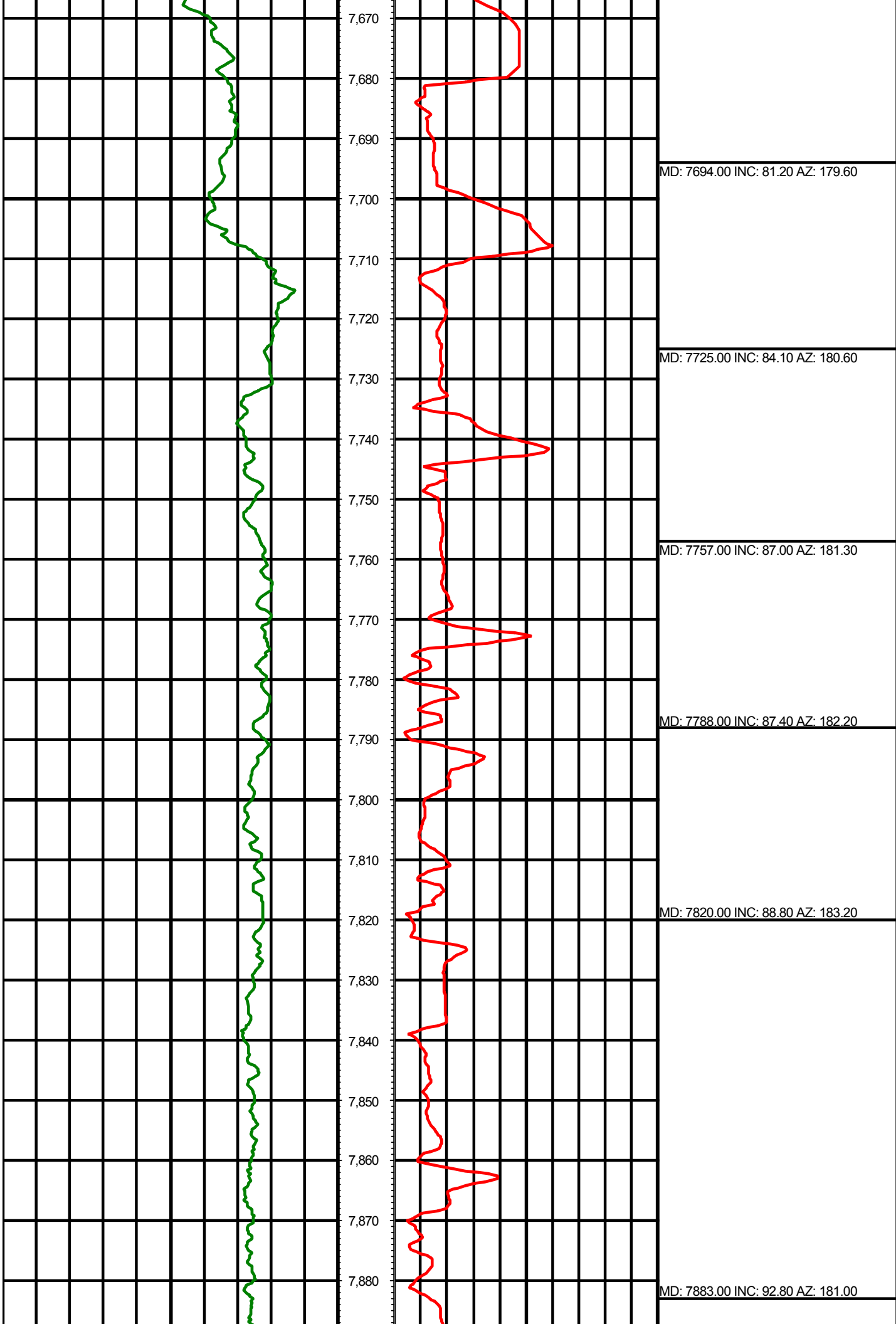


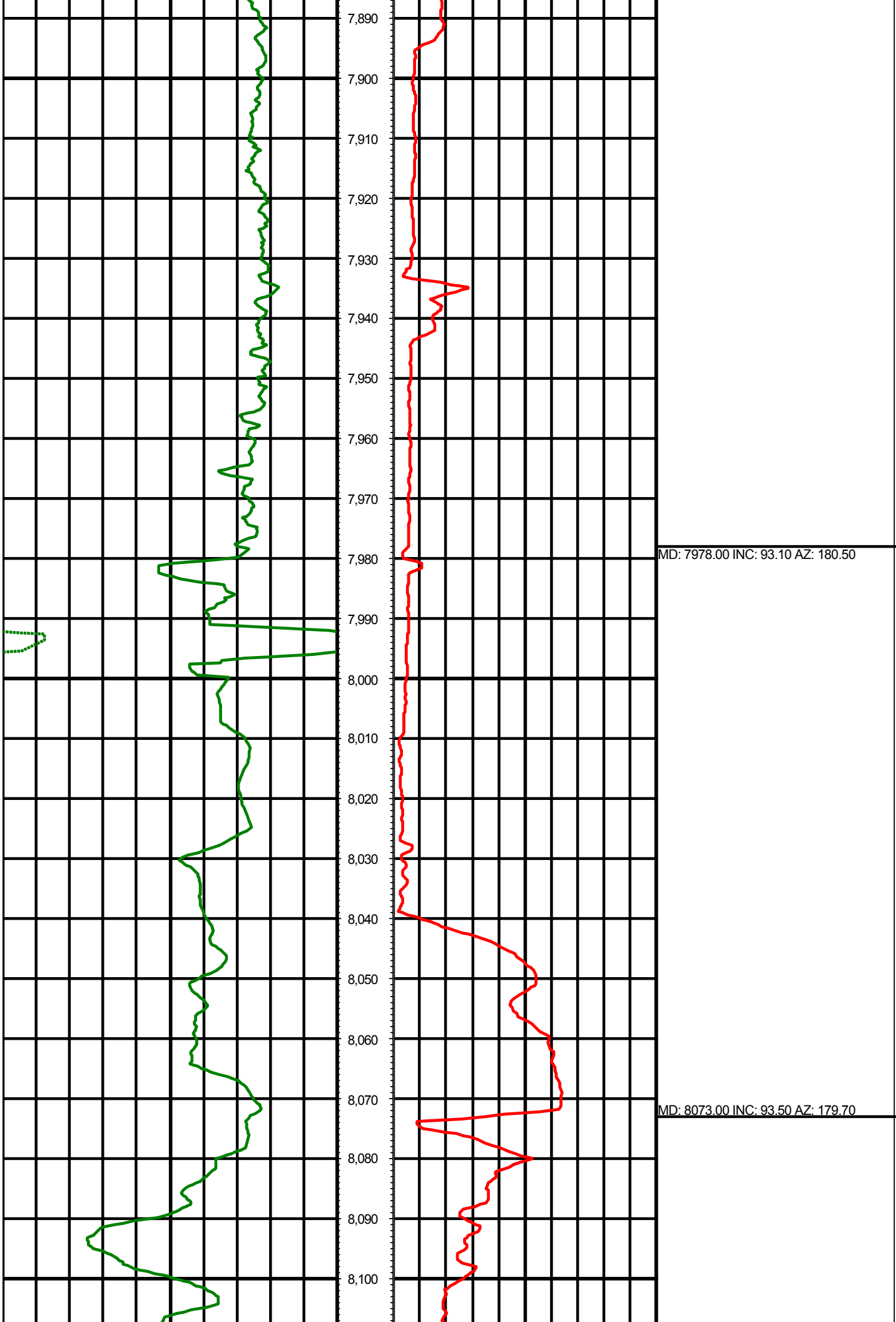


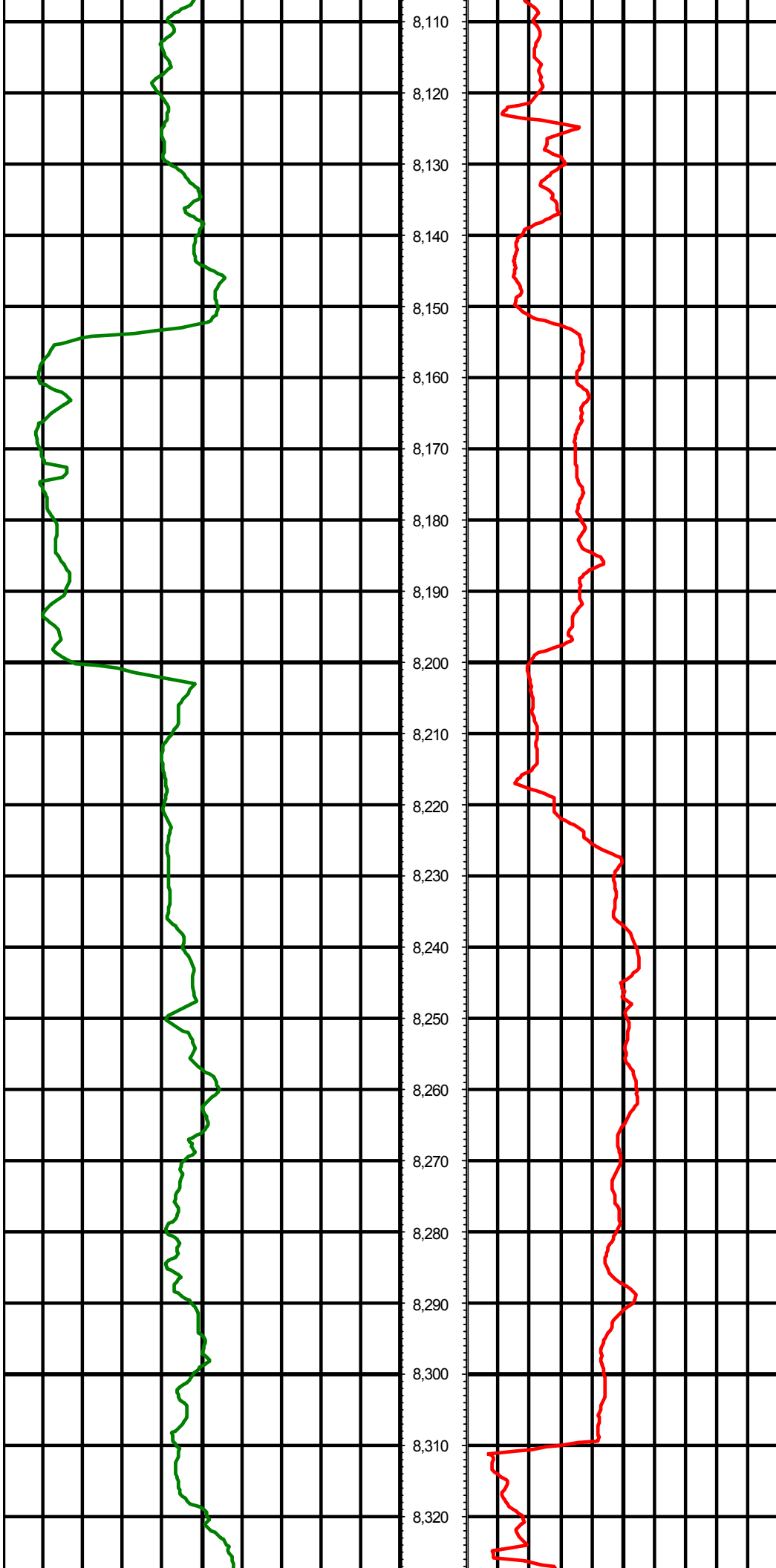








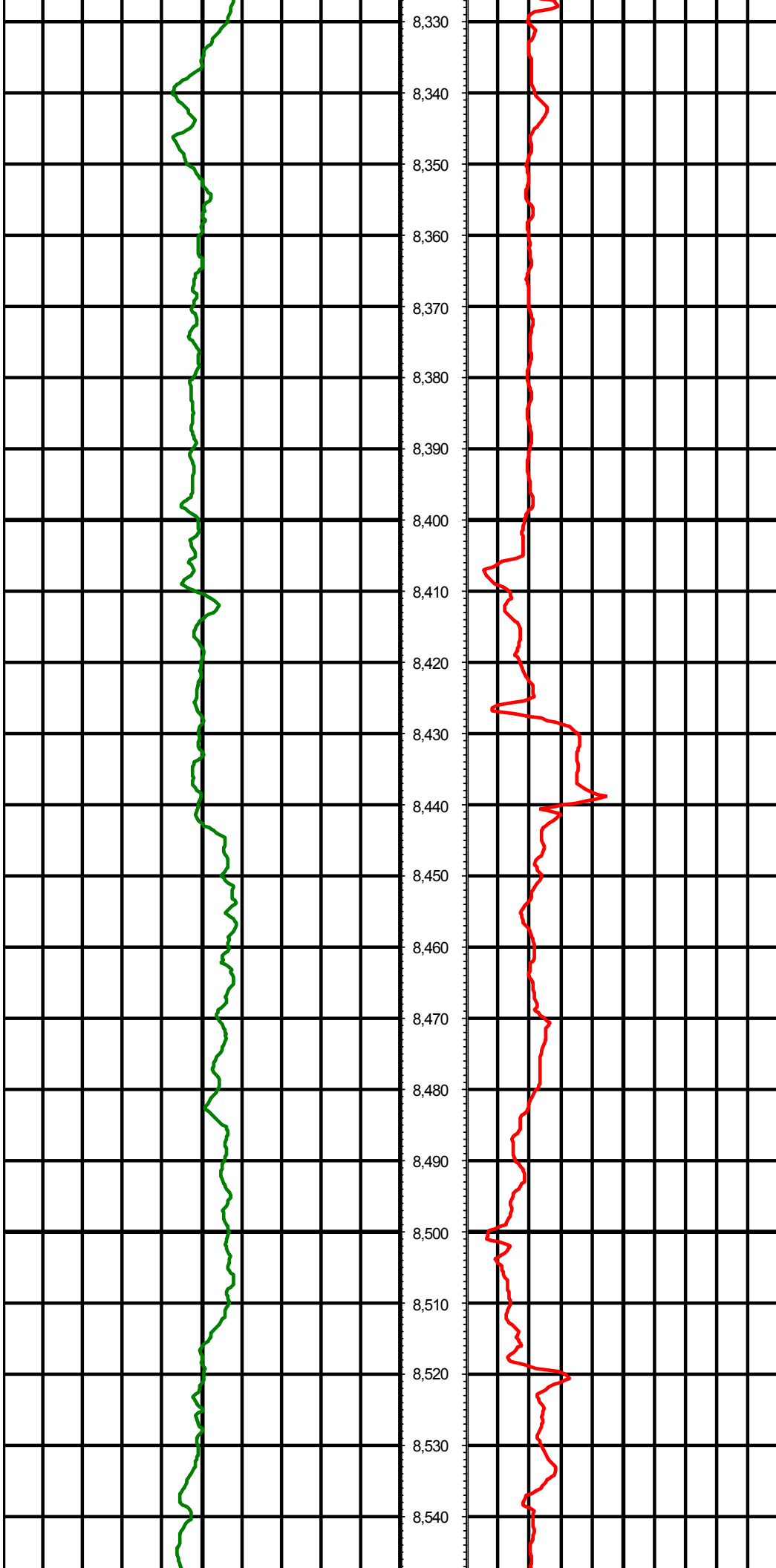




MD: 8167.00 INC: 93.50 AZ: 179.50

MD: 8262.00 INC: 93.10 AZ: 178.00



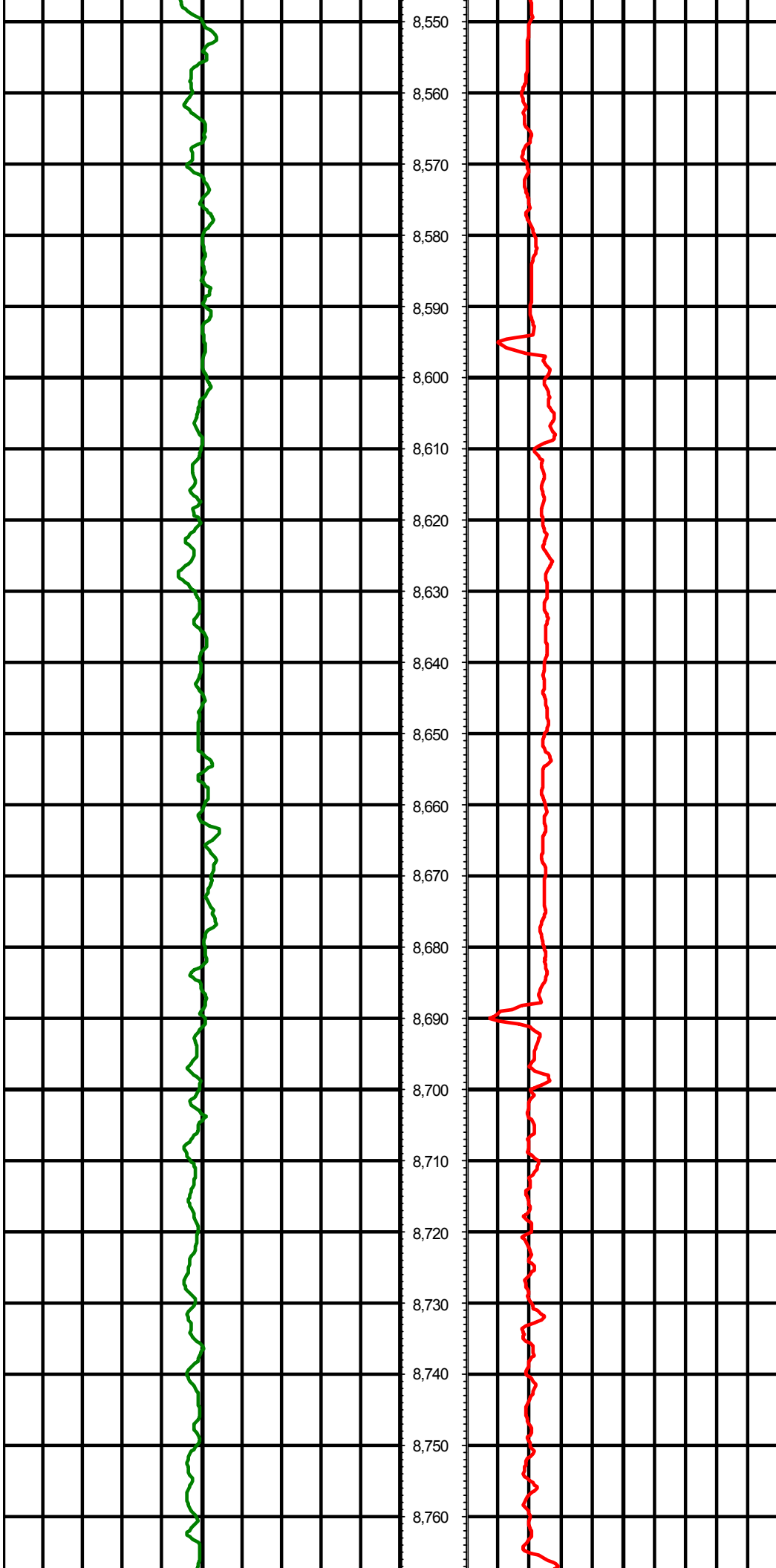


8,330  
8,340  
8,350  
8,360  
8,370  
8,380  
8,390  
8,400  
8,410  
8,420  
8,430  
8,440  
8,450  
8,460  
8,470  
8,480  
8,490  
8,500  
8,510  
8,520  
8,530  
8,540

MD: 8356.00 INC: 92.20 AZ: 178.30

MD: 8451.00 INC: 90.80 AZ: 179.50

MD: 8545.00 INC: 89.50 AZ: 180.40



8,550  
8,560  
8,570  
8,580  
8,590  
8,600  
8,610  
8,620  
8,630  
8,640  
8,650  
8,660  
8,670  
8,680  
8,690  
8,700  
8,710  
8,720  
8,730  
8,740  
8,750  
8,760

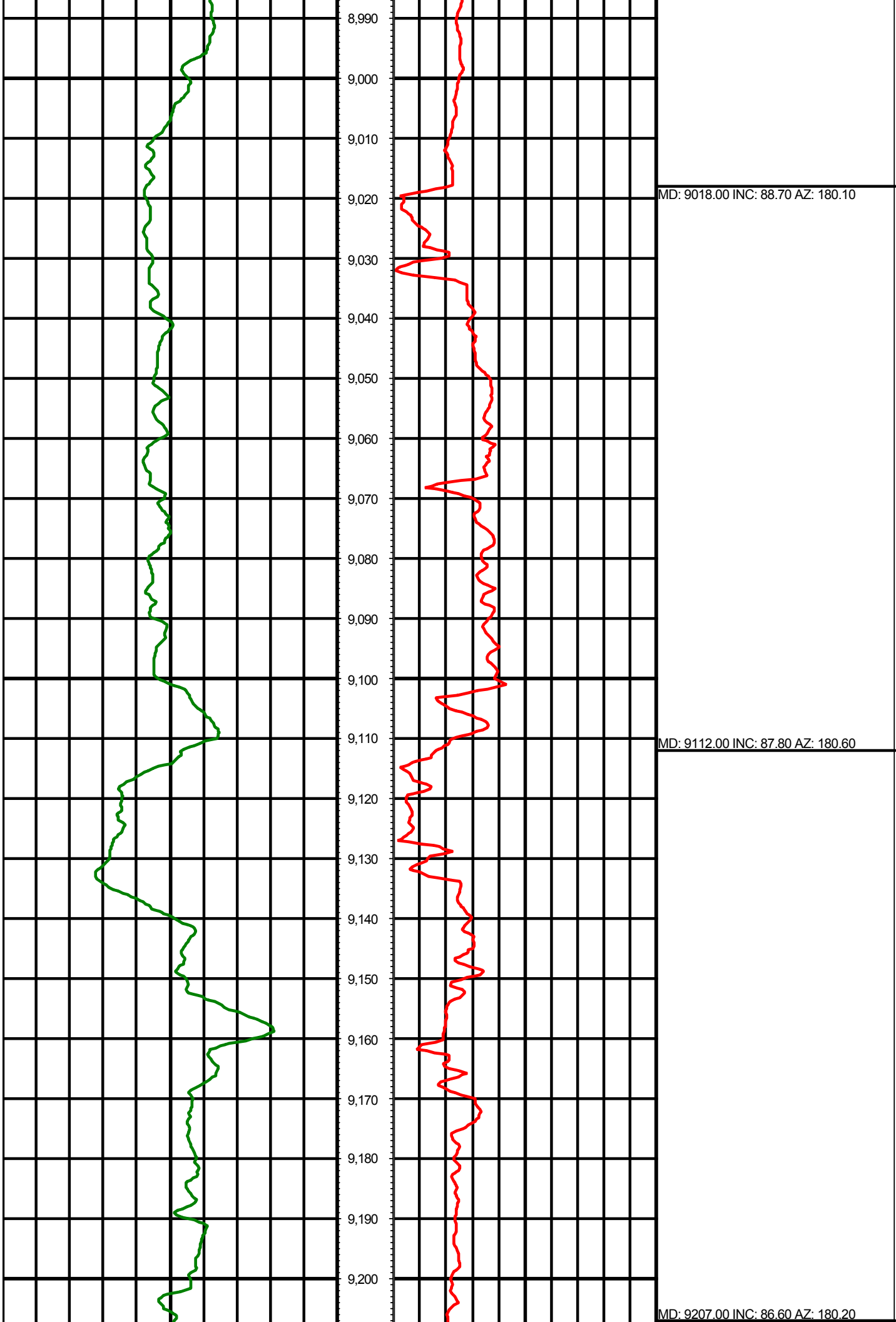
MD: 8640.00 INC: 89.50 AZ: 180.20

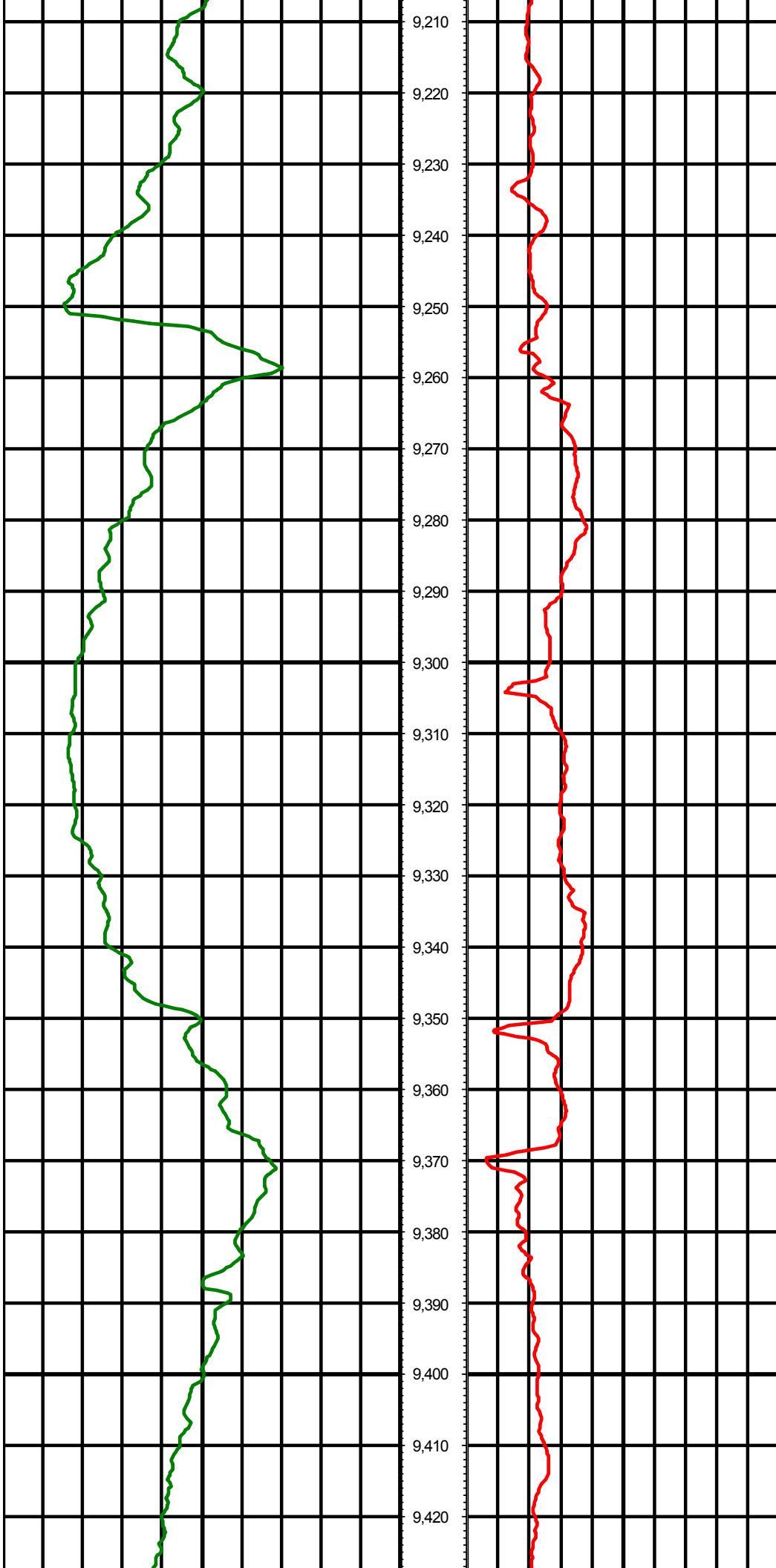
MD: 8734.00 INC: 89.60 AZ: 179.80



MD: 8829.00 INC: 89.30 AZ: 179.50

MD: 8923.00 INC: 88.60 AZ: 180.40



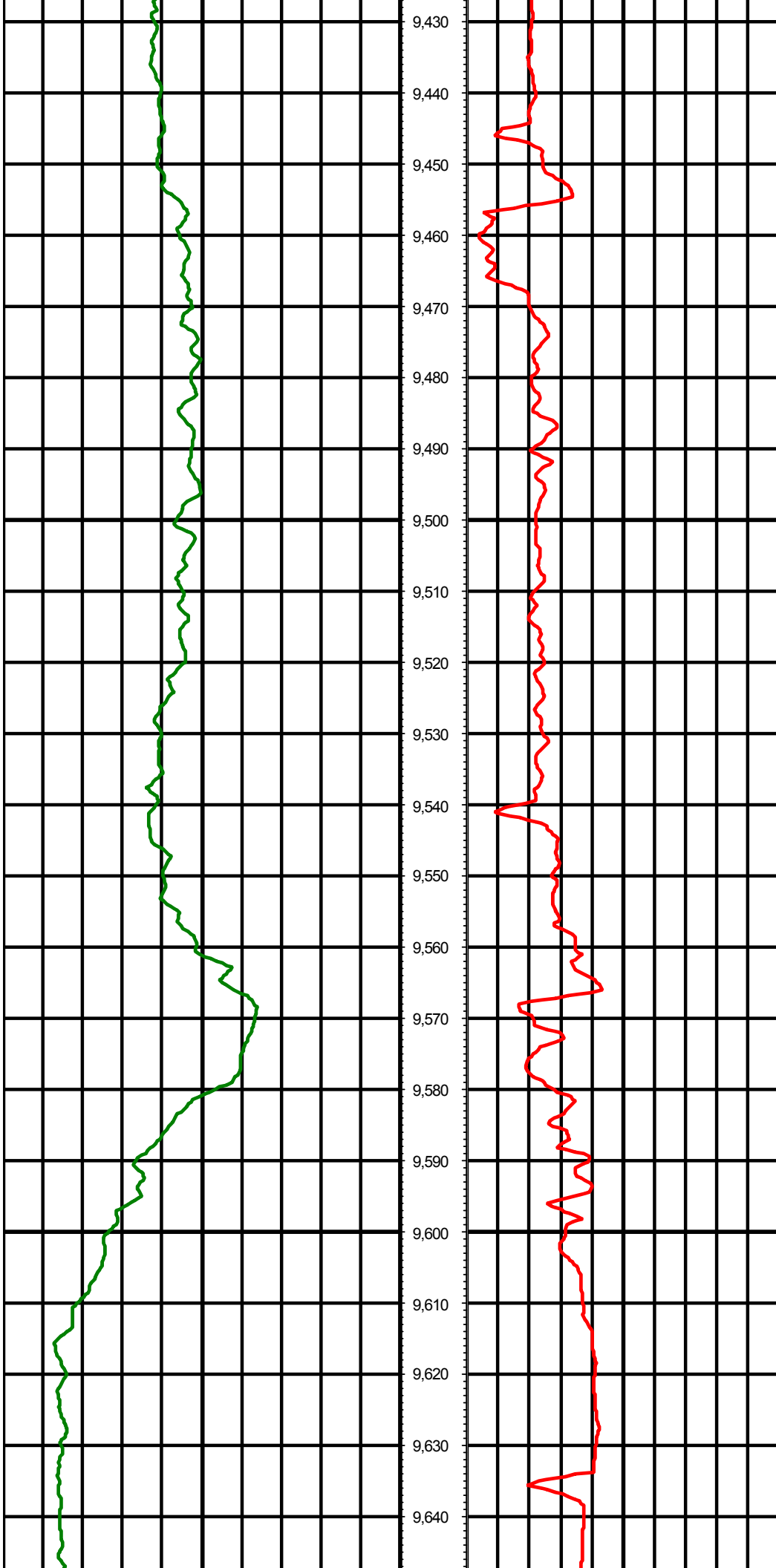


9,210  
9,220  
9,230  
9,240  
9,250  
9,260  
9,270  
9,280  
9,290  
9,300  
9,310  
9,320  
9,330  
9,340  
9,350  
9,360  
9,370  
9,380  
9,390  
9,400  
9,410  
9,420

MD: 9207.00 INC: 86.60 AZ: 180.20

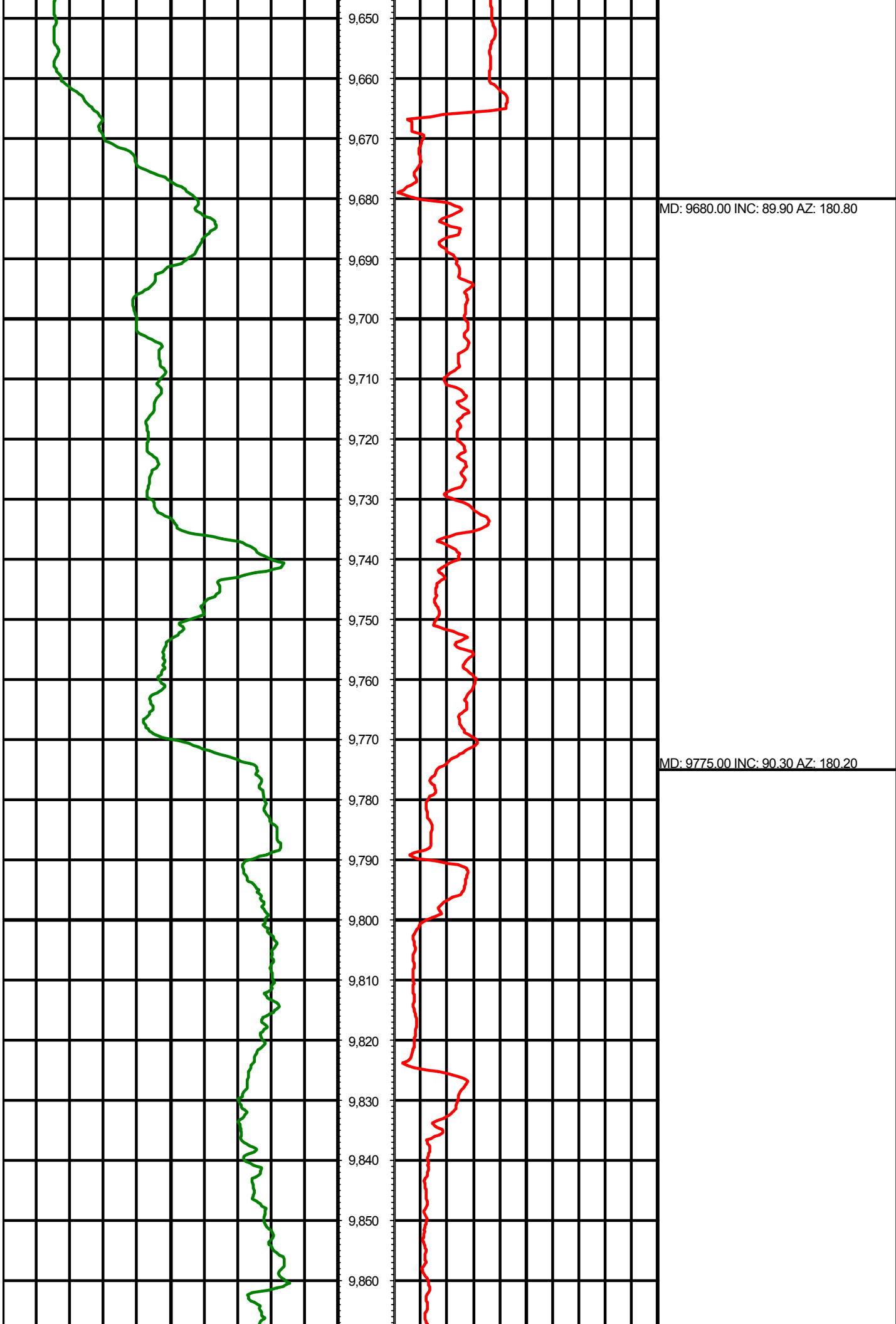
MD: 9302.00 INC: 87.00 AZ: 181.30

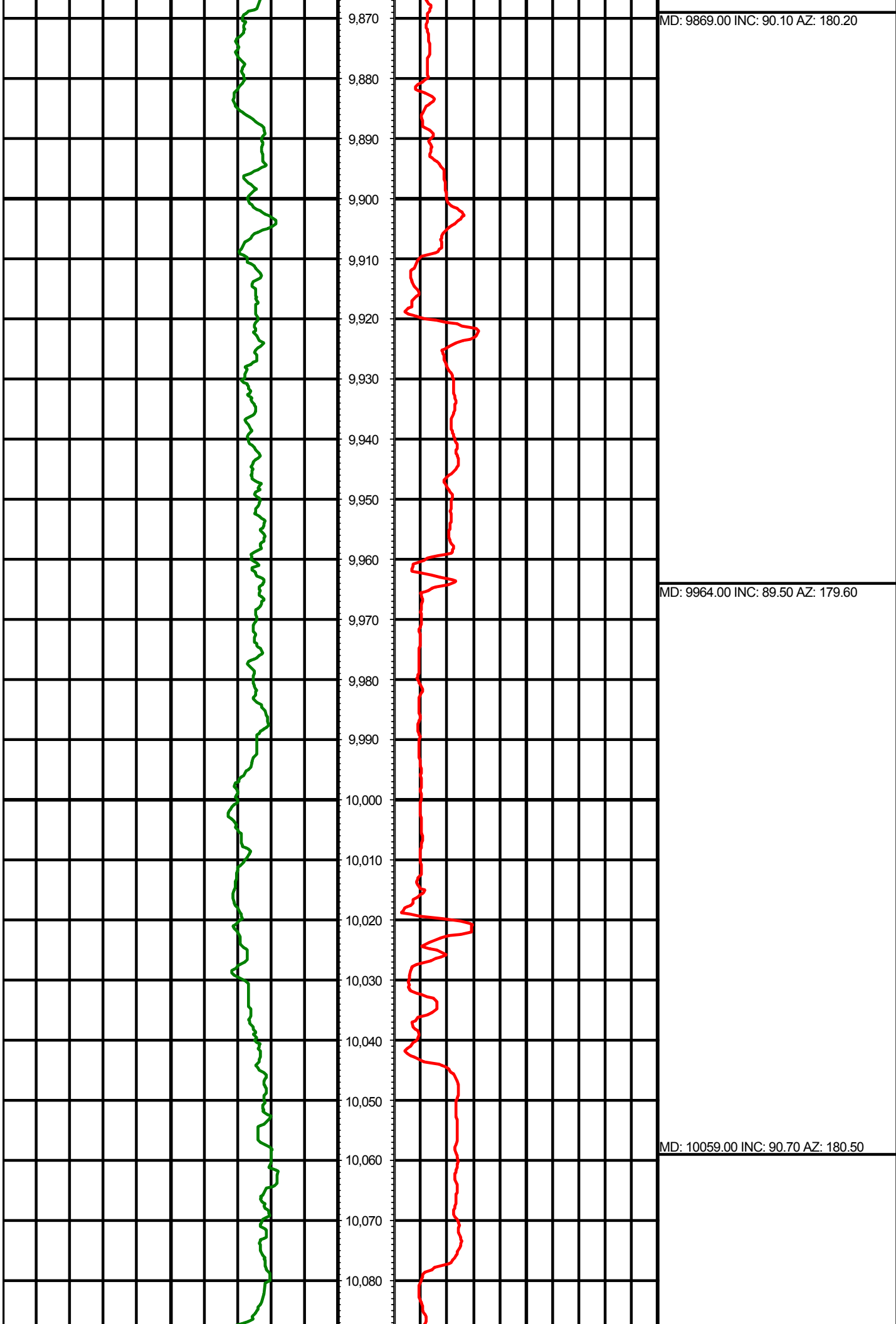
MD: 9396.00 INC: 88.40 AZ: 181.60



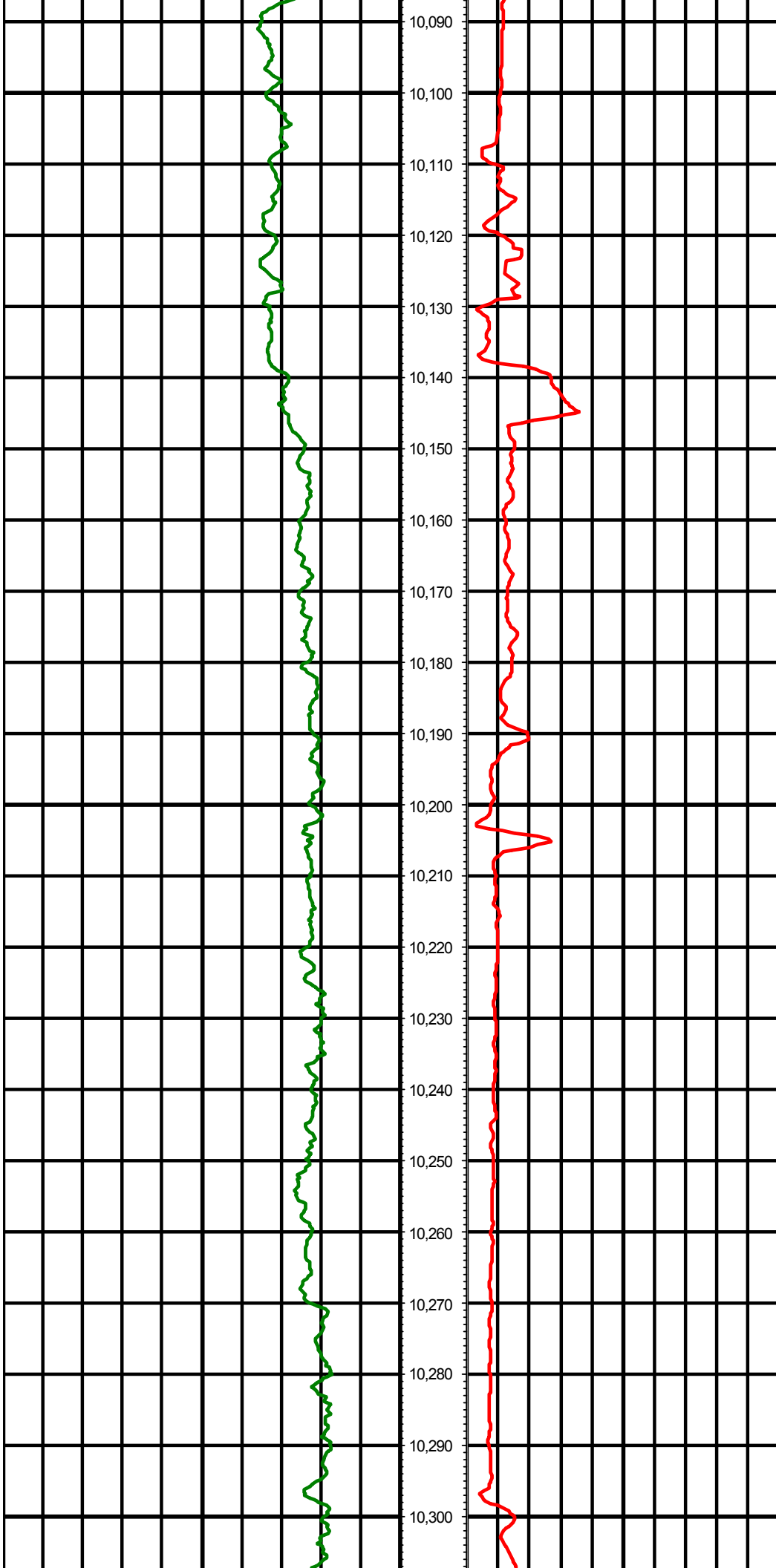
MD: 9491.00 INC: 87.80 AZ: 181.90

MD: 9586.00 INC: 87.40 AZ: 181.10



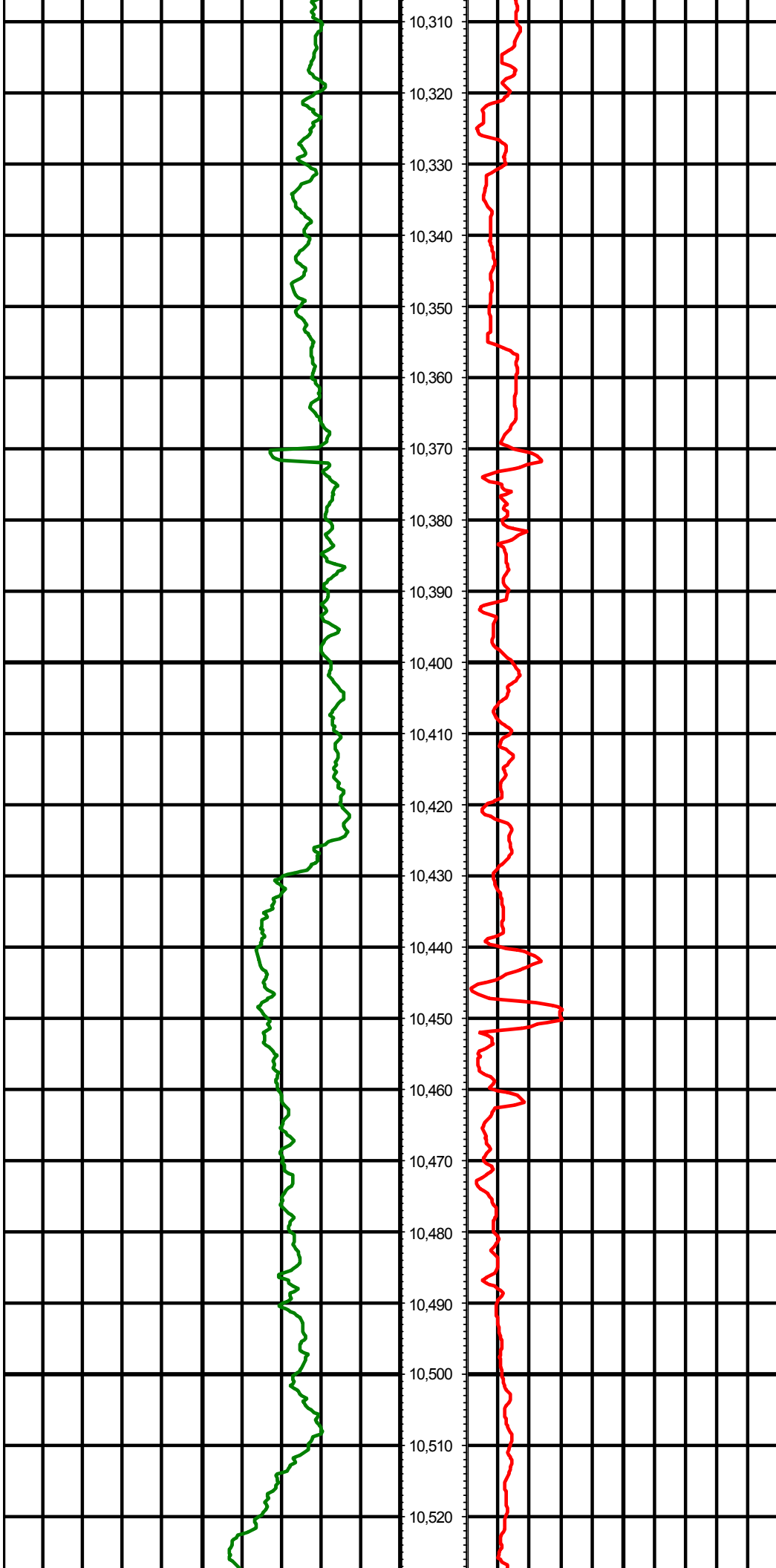






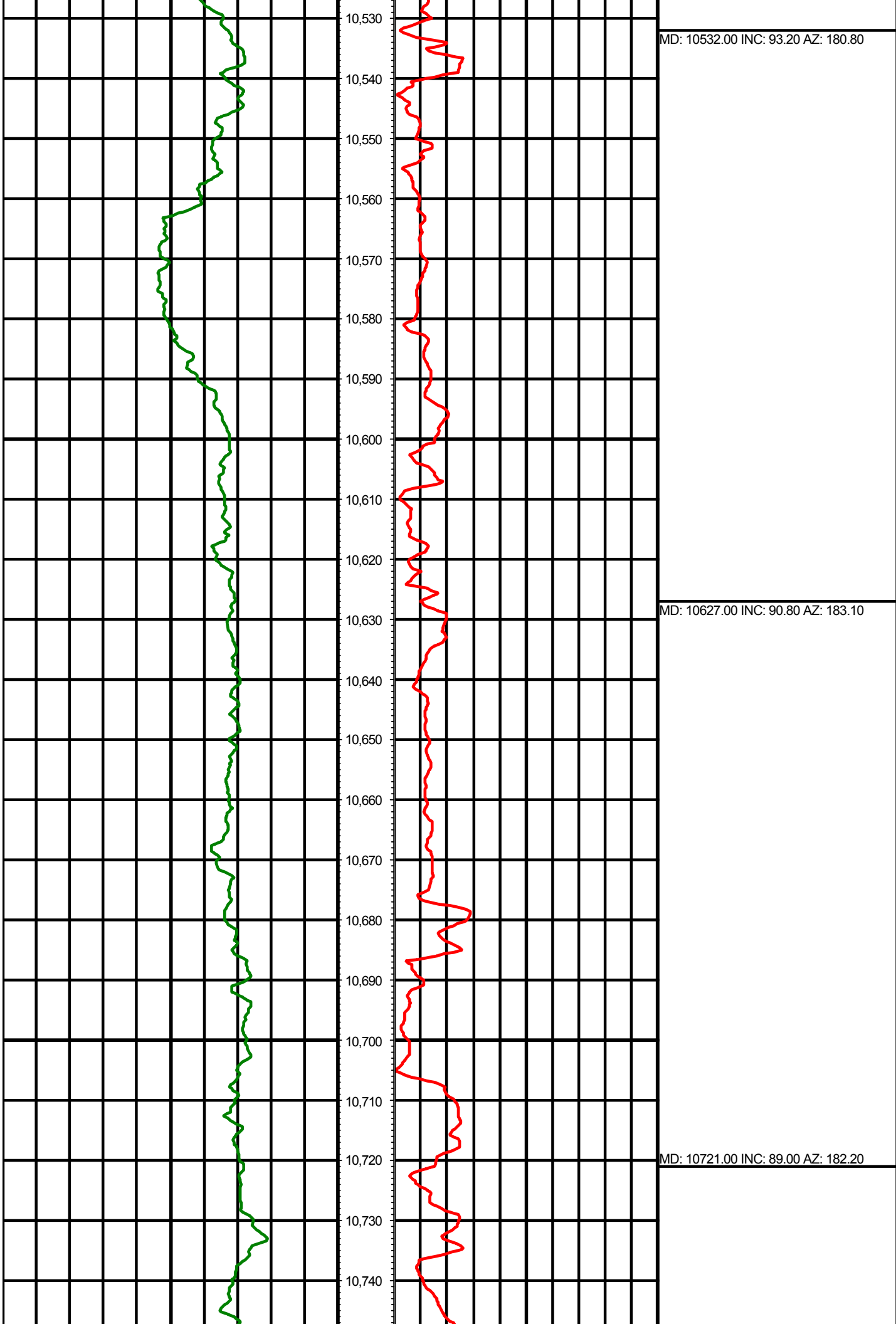
MD: 10153.00 INC: 92.30 AZ: 179.40

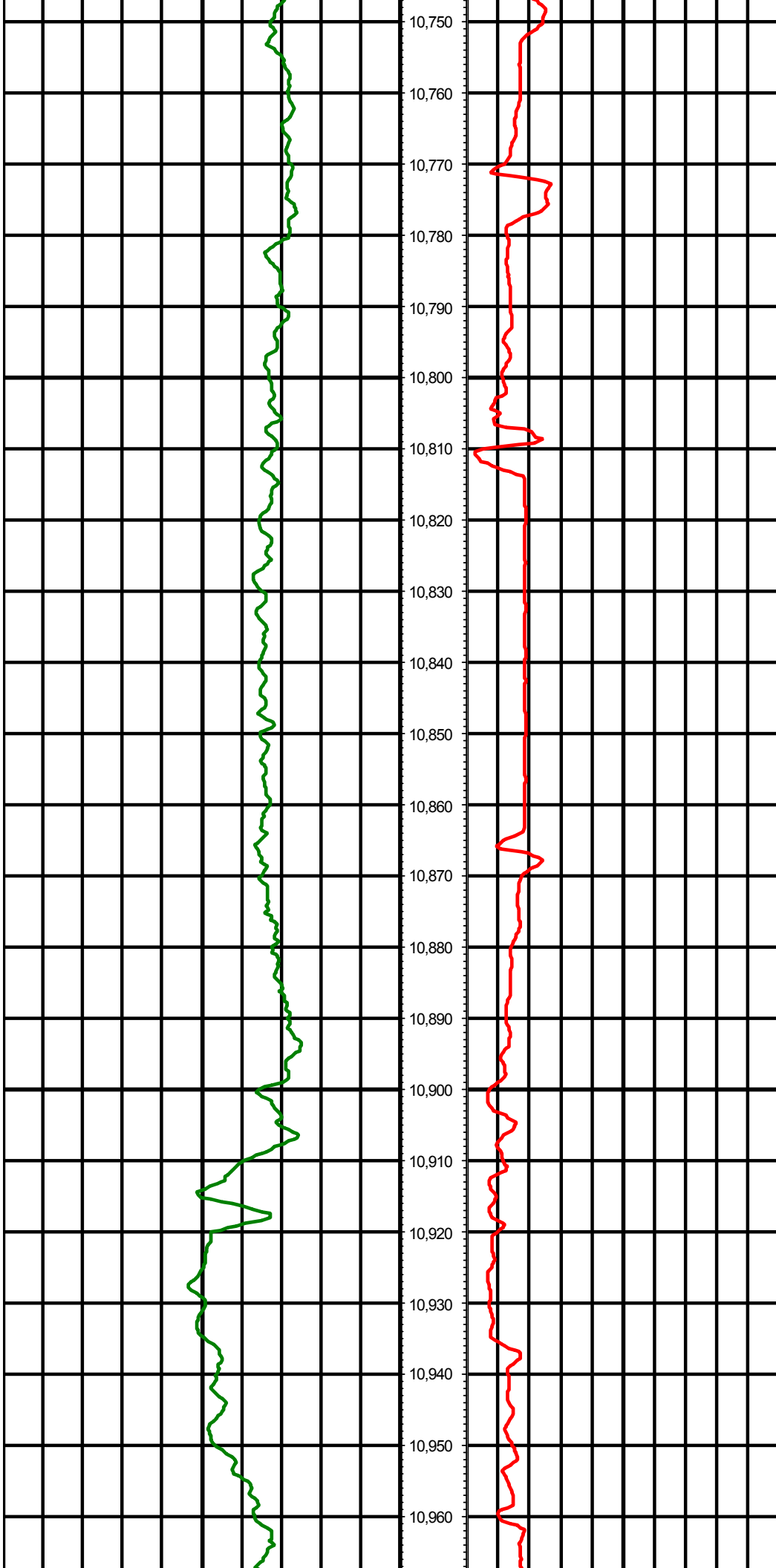
MD: 10248.00 INC: 92.90 AZ: 179.60



MD: 10343.00 INC: 93.20 AZ: 179.60

MD: 10437.00 INC: 94.30 AZ: 179.60





10,750  
10,760  
10,770  
10,780  
10,790  
10,800  
10,810  
10,820  
10,830  
10,840  
10,850  
10,860  
10,870  
10,880  
10,890  
10,900  
10,910  
10,920  
10,930  
10,940  
10,950  
10,960

MD: 10816.00 INC: 89.40 AZ: 181.40

MD: 10910.00 INC: 89.40 AZ: 180.60



10,970  
10,980  
10,990  
11,000  
11,010  
11,020  
11,030  
11,040  
11,050  
11,060  
11,070  
11,080  
11,090  
11,100  
11,110  
11,120  
11,130  
11,140  
11,150  
11,160  
11,170  
11,180

MD: 11005.00 INC: 89.40 AZ: 181.10

MD: 11100.00 INC: 89.50 AZ: 181.00

