

WPX ENERGY ROCKY MOUNTAIN LLC-EBUS

RG 713-29-298

Cyclone 29

Post Job Summary
Cement Surface Casing

Date Prepared: 10/01/2014
Job Date: 09/29/2014

Submitted by: Kory Hugentobler – Grand Junction Cement Engineer

The Road to Excellence Starts with Safety

Sold To #: 300721	Ship To #: 3535792	Quote #: 0021932973	Sales Order #: 0901703727
Customer: WPX ENERGY ROCKY MOUNTAIN LLC-EBUS	Customer Rep: RICK MORTIMER		
Well Name: FEDERAL	Well #: RG 713-29-298	API/UWI #: 05-103-12120-00	
Field: SULPHUR CREEK	City (SAP): RIO BLANCO	County/Parish: RIO BLANCO	State: COLORADO
Legal Description: 29-2S-98W-1100FSL-1397FWL			
Contractor: CYCLONE	Rig/Platform Name/Num: CYCLONE 29		
Job BOM: 392189			
Well Type: DIRECTIONAL GAS			
Sales Person: HALAMERICA\HB50180	Srv Supervisor: Dustin Smith		

Job

Formation Name	
Formation Depth (MD)	Top Bottom
Form Type	BHST
Job depth MD	2973ft Job Depth TVD
Water Depth	Wk Ht Above Floor 5 FT
Perforation Depth (MD)	From To

Well Data

Description	New / Used	Size in	ID in	Weight lbm/ft	Thread	Grade	Top MD ft	Bottom MD ft	Top TVD ft	Bottom TVD ft
Open Hole Section			17.5				0	1550	0	1550
Casing		13.375	12.415	68	BTC	P-110	0	2973	0	0
Open Hole Section			17.5				1550	2983	1550	2983

Tools and Accessories

Type	Size in	Qty	Make	Depth ft	Type	Size in	Qty	Make
Guide Shoe	13.375	1		2973	Top Plug	13.375	1	HES
Float Shoe	13.375	1						
Float Collar	13.375	1		2930.08				
Insert Float	13.375	1			Plug Container	13.375	1	HES
Stage Tool	13.375	1			Centralizers	13.375		

Miscellaneous Materials

Gelling Agt	Conc	Surfactant	Conc	Acid Type	Qty	Conc
Treatment Fld	Conc	Inhibitor	Conc	Sand Type	Size	Qty

Fluid Data

Stage/Plug #: 1

Fluid #	Stage Type	Fluid Name	Qty	Qty UoM	Mixing Density lbm/gal	Yield ft3/sack	Mix Fluid Gal	Rate bbl/min	Total Mix Fluid Gal
1	Fresh Water	Fresh Water	40	bbl	8.33			4.0	

Fluid #	Stage Type	Fluid Name	Qty	Qty UoM	Mixing Density lbm/gal	Yield ft3/sack	Mix Fluid Gal	Rate bbl/min	Total Mix Fluid Gal
---------	------------	------------	-----	---------	------------------------	----------------	---------------	--------------	---------------------

2	VersaCem GJ1	VERSACEM (TM) SYSTEM	455	sack	12.8	1.77		8.0	9.31
9.33 Gal		FRESH WATER							
Fluid #	Stage Type	Fluid Name	Qty	Qty UoM	Mixing Density lbm/gal	Yield ft3/sack	Mix Fluid Gal	Rate bbl/min	Total Mix Fluid Gal
3	VariCem GJ1	VARICEM (TM) CEMENT	320	sack	12.8	2.11		7.0	11.77
11.71 Gal		FRESH WATER							
Fluid #	Stage Type	Fluid Name	Qty	Qty UoM	Mixing Density lbm/gal	Yield ft3/sack	Mix Fluid Gal	Rate bbl/min	Total Mix Fluid Gal
4	Fresh Water Displacement	Fresh Water Displacement	438.6	bbl	8.33			10.0	
Cement Left In Pipe		Amount	43 ft		Reason		Shoe Joint		
Fluid Data									
Stage/Plug #: 2									
Fluid #	Stage Type	Fluid Name	Qty	Qty UoM	Mixing Density lbm/gal	Yield ft3/sack	Mix Fluid Gal	Rate bbl/min	Total Mix Fluid Gal
1	Fresh Water	Fresh Water	20	bbl	8.33			4.0	
Fluid #	Stage Type	Fluid Name	Qty	Qty UoM	Mixing Density lbm/gal	Yield ft3/sack	Mix Fluid Gal	Rate bbl/min	Total Mix Fluid Gal
2	VariCem GJ5	VARICEM (TM) CEMENT	900	sack	12.8	2.18		8.0	12.11
12.05 Gal		FRESH WATER							
Fluid #	Stage Type	Fluid Name	Qty	Qty UoM	Mixing Density lbm/gal	Yield ft3/sack	Mix Fluid Gal	Rate bbl/min	Total Mix Fluid Gal
3	Fresh Water Displacement	Fresh Water Displacement	232.6	bbl	8.33			10.0	
Fluid #	Stage Type	Fluid Name	Qty	Qty UoM	Mixing Density lbm/gal	Yield ft3/sack	Mix Fluid Gal	Rate bbl/min	Total Mix Fluid Gal
4	Top Out	Type I-II Cement	300	sack	15.6	1.21		3	5.4
5.39 Gal		FRESH WATER							
94 lbm		TYPE I / II CEMENT, BULK (101439798)							
2 %		CALCIUM CHLORIDE, PELLET, 50 LB (101509387)							
Cement Left In Pipe		Amount	42.92 ft		Reason		Shoe Joint		

HALLIBURTON

W/PX ENERGY ROCKY MOUNTAIN LLC-BUS

0901703727

W/PX - FEDERAL RG 713-29-298 - 2 STAGE SURFACE

3.5 Job Event Log

Type	Seq. No.	Graph Label	Date	Time	Source	DH Density (ppg)	Comb Pump Rate (bbl/min)	PS Pump Press (psi)	Pump Stage Total (bbl)	Comment
Event	1	Call Out	9/28/2014	07:00:00	USER					ELITE # 8
Event	2	Pre-Convoy Safety Meeting	9/28/2014	10:00:00	USER					ALL HES EMPLOYEES
Event	3	Arrive At Loc	9/28/2014	14:00:00	USER					CREW AND ALL EQUIPMENT ARRIVED ON LOCATION @ 1400 REQUESTED ON LOCATION TIME WAS 1200 RIG RUNNING CASING UPON HES ARRIVAL
Event	4	Assessment Of Location Safety Meeting	9/28/2014	14:20:00	USER					ALL HES EMPLOYEES
Event	5	Pre-Rig Up Safety Meeting	9/28/2014	14:30:00	USER					ALL HES EMPLOYEES
Event	6	Rig-Up Equipment	9/28/2014	15:00:00	USER					1 HT-400 PUMP TRUCK (ELITE # 8) 2 660 BULK TRUCKS 2 SILOS 1 F-550 PICKUP
Event	7	Pre-Job Safety Meeting	9/28/2014	15:20:00	USER					ALL HES EMPLOYEES AND RIG CREW RIG CIRCULATED @ 10 BPM
Event	8	Start Job	9/28/2014	21:39:00	COM5					TD: 2983 TP: 2973 SL: 42.92 CSG: 13 3/8 68# P-110 OH: 17 1/2 STAGE TOOL SET @ 1554 MUD WT: 8.7 PPG
Event	9	Prime Lines	9/28/2014	21:41:19	COM5	8.33	2.0	200	2.0	PRIME LINES WITH 2 BBLs FRESH WATER
Event	10	Test Lines	9/28/2014	21:43:41	COM5	8.33	0.00	5255	2.0	PRESSURE TEST OK
Event	11	Pump Fresh Water Spacer	9/28/2014	21:48:14	COM5	8.33	4.0	419	40	40 BBL FRESH WATER SPACER
Event	12	Pump Lead Cement	9/28/2014	22:01:06	COM5	12.8	8.0	495	143.3	455 SKS 12.8 PPG 1.77 YIELD 9.31 GAL/SK LEAD CEMENT WEIGHT VERIFIED VIA PRESSURIZED MUD SCALES
Event	13	Pump Tail Cement	9/28/2014	22:21:00	COM5	12.8	7.0	335	120.3	320 SKS 12.8 PPG 2.11 YIELD 11.77 GAL/SK TAIL CEMENT WEIGHT VERIFIED VIA PRESSURIZED MUD SCALES
Event	14	Shutdown	9/28/2014	22:41:09	COM5					
Event	15	Drop Top Plug	9/28/2014	22:43:55	COM5					PLUG AWAY NO PROBLEMS WASHED UP ON TOP OF PLUG AS PER COMPANY REP
Event	16	Pump Displacement	9/28/2014	22:45:57	COM5	8.33	10	820	438.6	FRESH WATER DISPLACEMENT

HALLIBURTON

WPX ENERGY ROCKY MOUNTAIN LLC-EBUS
0901703727
WPX - FEDERAL RG 713-29-298 - 2 STAGE SURFACE

Event	17	Slow Rate	9/28/2014	23:12:12	COM5	8.33	4.0	63	222	SLOW RATE 10 BBL PRIOR TO PLUG PASSING THROUGH STAGE TOOL AND INCREASED RATE 10 BBL PAST STAGE TOOL
Event	18	Slow Rate	9/28/2014	23:35:42	COM5	8.33	4.0	480	420	SLOW RATE TO BUMP PLUG
Event	19	Bump Plug	9/28/2014	23:38:00	COM5	8.33	4.0	1044	438.6	PSI BEFORE BUMPING PLUG @ 480 BUMPED PLUG UP TO 1044 PSI
Event	20	Check Floats	9/28/2014	23:40:07	COM5					FLOATS HELD 1 3/4 BBL BACK TO DISPLACEMENT TANKS
Event	21	Drop Opening Device For Multiple Stage Cementer	9/28/2014	23:45:00	USER					DROP OPENING DEVICE AND WAIT 10 MIN
Event	22	Open Multiple Stage Cementer	9/28/2014	23:56:04	COM5	8.33	2.0	1580	3.0	ATTEMPTED TO OPEN STAGE TOOL AFTER 10 MIN AND PRESSURED UP TO 1580 PSI - TOOL DID NOT OPEN BLEED PRESSURE OFF AND WAITED AGAIN 2ND ATTEMPT PRESSURED UP TO 1573 PSI AND TOOL AGAIN DID NOT OPEN BLEED PRESSURE OFF AND ON THE 3RD ATTEMPT PRESSURED UP TO 1840 PSI AND TOOL STILL DID NOT OPEN
Event	23	Circulate Well	9/29/2014	00:18:00	COM5					AS PER COMPANY REP TOOK PLUG CONTAINER OFF AND PUT SWAGE ON AND RIG WORKED CASING AND THEN PRESSURED UP TO 270 PSI AND THE TOOL OPENED RIG CIRCULATED 20 BBLs OF CEMENT OFF THE TOP OF THE STAGE TOOL
Event	24	End Job	9/29/2014	00:20:00	COM5					END FIRST STAGE RIG CIRCULATED FOR 4 HOURS BETWEEN STAGES
Event	25	Comment	9/29/2014	00:22:00	USER					GAINED RETURNS 40 BBLs INTO THE FRESH WATER SPACER AND MAINTAINED RETURNS UNTIL SLOWING THE RATE TO LAND THE PLUG
Event	26	Start Job	9/29/2014	04:40:11	COM5					STAGE TOOL AT 1554
Event	27	Test Lines	9/29/2014	04:42:00	COM5	8.33	0.00	5120	2.0	PRESSURE TEST OK
Event	28	Pump Fresh Water Spacer	9/29/2014	04:46:53	COM5	8.33	4.0	83	20	20 BBL FRESH WATER SPACER
Event	29	Pump Tail Cement	9/29/2014	04:56:00	COM5	12.8	8.0	435	349.4	900 SKS 12.8 PPg 2.18 YIELD 12.11 GAL/SK TAIL CEMENT WEIGHT VERIFIED VIA PRESSURIZED MUD SCALES
Event	30	Shutdown	9/29/2014	05:47:58	COM5					
Event	31	Drop Closing Plug	9/29/2014	05:48:30	USER					PLUG AWAY NO PROBLEMS
Event	32	Pump Displacement	9/29/2014	05:49:03	COM5	8.33	10	600	232.6	FRESH WATER DISPLACEMENT

HALLIBURTON

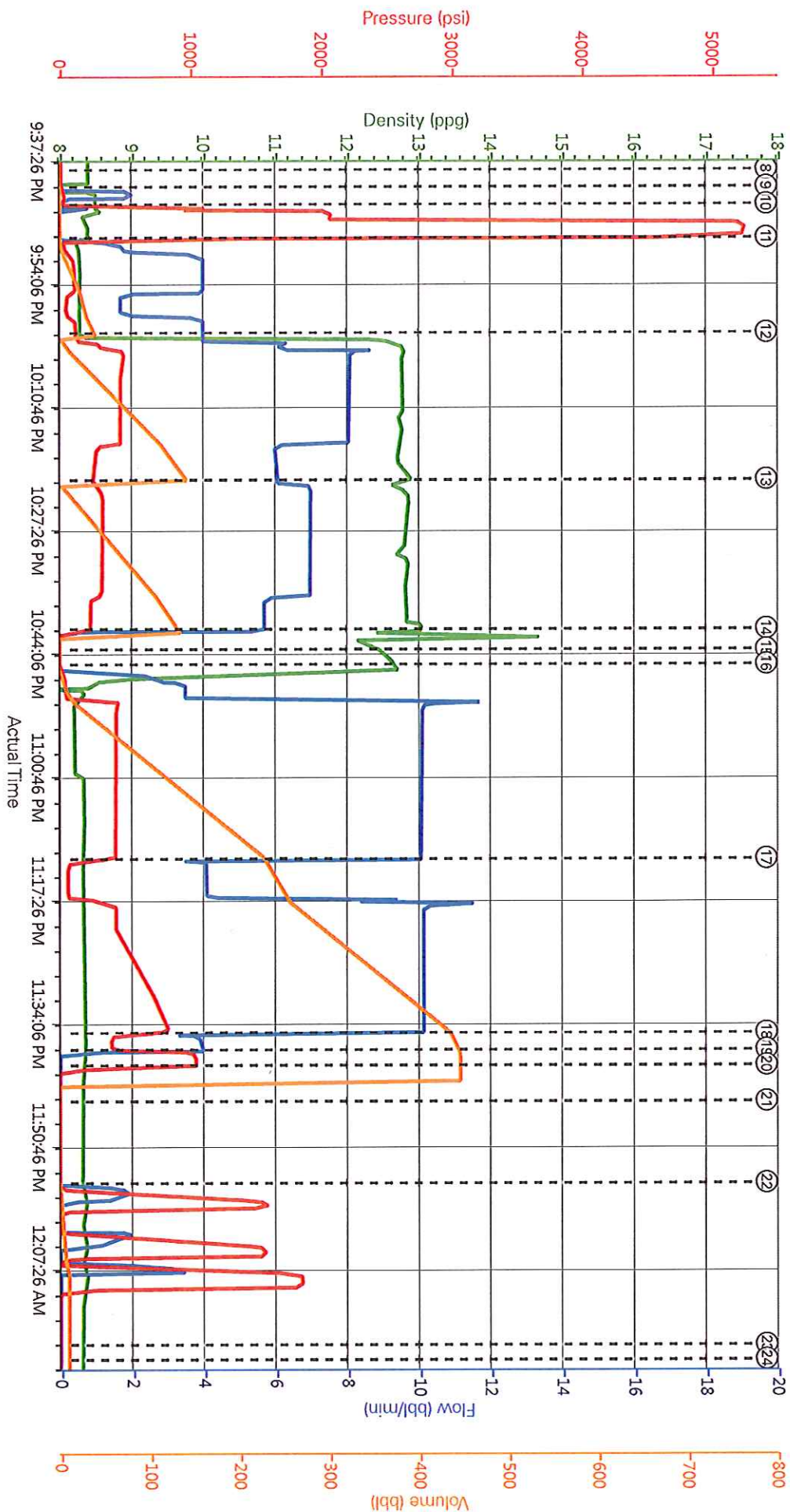
WPX ENERGY ROCKY MOUNTAIN LLC-EBUS

0901703727

WPX - FEDERAL RG 713-29-298 - 2 STAGE SURFACE

Event	33	Slow Rate	9/29/2014	06:15:13	COM5	8.33	4.0	225	222	SLOWED TO 4 BPM LAST 10 BBLs
Event	34	Bump Plug / Close Tool	9/29/2014	06:19:07	COM5	8.33	4.0	1475	232.6	PSI BEFORE BUMPING PLUG AT 250, BUMPED PLUG UP TO 1475 PSI
Event	35	Check Floats	9/29/2014	06:22:13	COM5					FLOATS HELD, 1 1/2 BBL BACK TO DISPLACEMENT TANKS
Event	36	End Job	9/29/2014	06:24:15	COM5					END 2ND STAGE, GAINED RETURNS 20 BBLs INTO TAIL CEMENT, LOST RETURNS 60 BBLs INTO DISPLACEMENT, GAINED RETURNS 120 BBLs INTO DISPLACEMENT, LOST RETURNS WHEN WE SLOWED RATE TO BUMP PLUG
Event	37	Start Job	9/29/2014	11:22:00	COM5					TOPOUT # 1 RIG RAN PARASITE STRING TO 255'
Event	38	Test Lines	9/29/2014	11:25:03	COM5	8.33	0.0	3393	2.0	PRESSURE TEST OK
Event	39	Pump Spacer 1	9/29/2014	11:36:36	COM5	8.33	2.0	100	2.0	FRESH WATER AHEAD
Event	40	Pump Cement	9/29/2014	11:38:14	USER	15.6	3.00	380	57	PUMPED 265 SKS OF TOPOUT @ 15.6 PPg 1.21 YIELD 5.4 GAL/SK AND GOT CEMENT TO SURFACE 2 % CALCIUM CHLORIDE WAS DUMPED DOWN THE BACKSIDE AS CEMENT WAS BEING PUMPED
Event	41	End Job	9/29/2014	12:17:09	COM5					MIXED ALL 300 SKS OF TOPOUT ON LOCATION AND GOT 7 BBLs OF CEMENT TO SURFACE
Event	42	Pre-Rig Down Safety Meeting	9/29/2014	12:30:00	USER					ALL HES EMPLOYEES
Event	43	Rig-Down Equipment	9/29/2014	12:40:00	USER					
Event	44	Pre-Convoy Safety Meeting	9/29/2014	13:50:00	USER					ALL HES EMPLOYEES
Event	45	Crew Leave Location	9/29/2014	14:00:00	USER					THANK YOU FOR USING HALLIBURTON CEMENT DUSTIN SMITH AND CREW

WPX - FEDERAL RG 713-29-298 - 13 3/8 1ST STAGE



① Call Out	⑥ Rig-Up Equipment	⑩ Pump Fresh Water Spacer	⑭ Pump Displacement	⑲ Drop Opening Device For Multiple Stage Cementer
② Pre-Convoy Safety Meeting	⑦ Pre-Job Safety Meeting	⑪ Pump Lead Cement	⑮ Slow Rate	⑳ Open Multiple Stage Cementer
③ Arrive At Loc	⑧ Start Job	⑫ Pump Tail Cement	⑯ Slow Rate	㉑ Circulate Well
④ Assessment Of Location Safety Meeting	⑨ Prime Lines	⑬ Shutdown	⑰ Bump Plug	㉒ End Job
⑤ Pre-Rig Up Safety Meeting	⑫ Test Lines	⑭ Drop Top Plug	⑱ Check Floats	

HALIBURTON | iCem® Service

Created: 2014-09-28 09:05:20, Version: 3.0.121

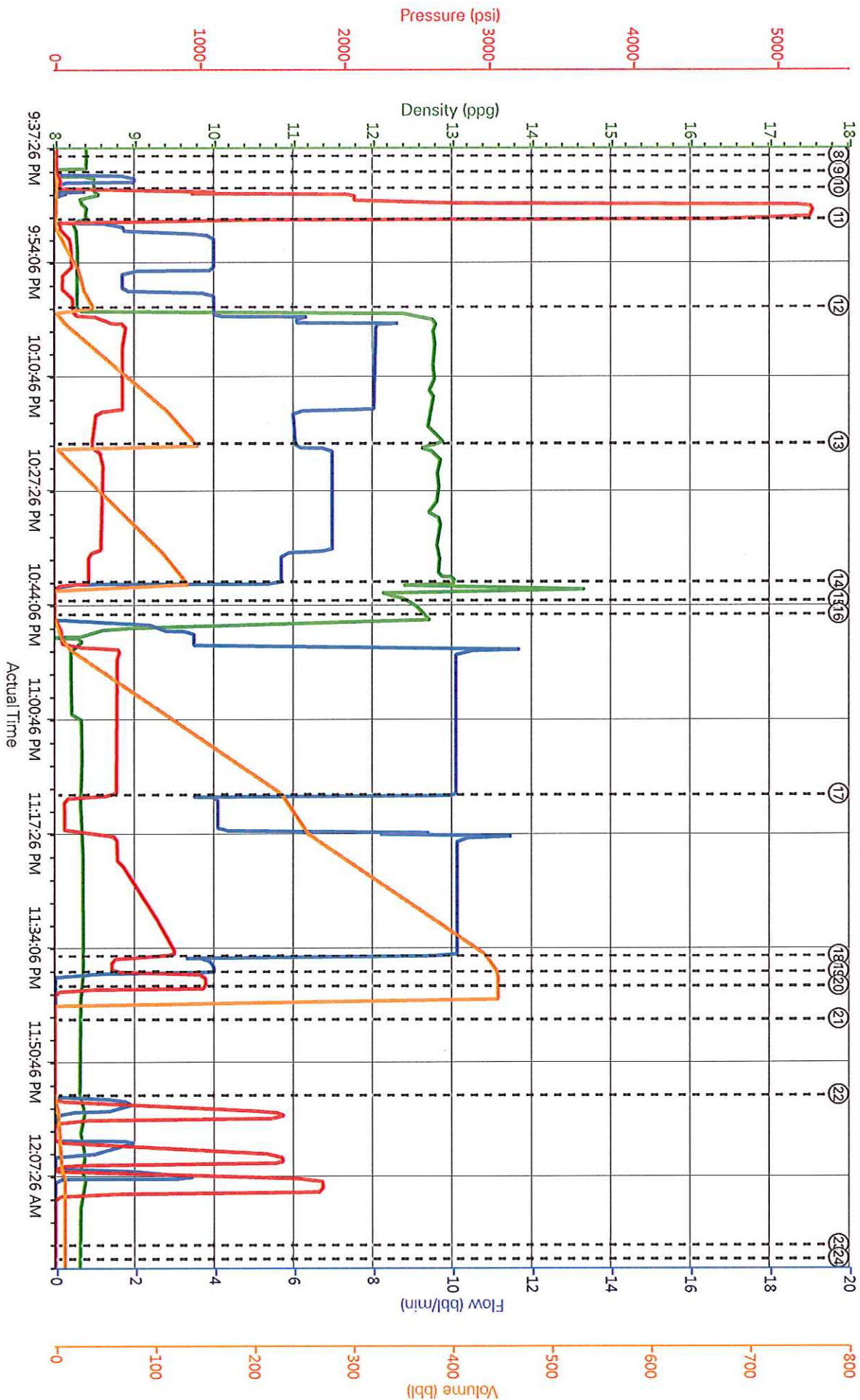
Edit

Customer: WPX ENERGY ROCKY MOUNTAIN LLC-EBUS
Representative: RICK MORTIMER

Job Date: 9/28/2014 7:33:19 PM
Sales Order #: 0901703727

Well: FEDERAL RG 713-29-298
ELITE # 8: DUSTIN SMITH / ROB EICKHOFF

WPX - FEDERAL RG 713-29-298 - 13 3/8 1ST STAGE



HALLIBURTON | iCem® Service

Created: 2014-09-28 09:05:20, Version: 3.0.121

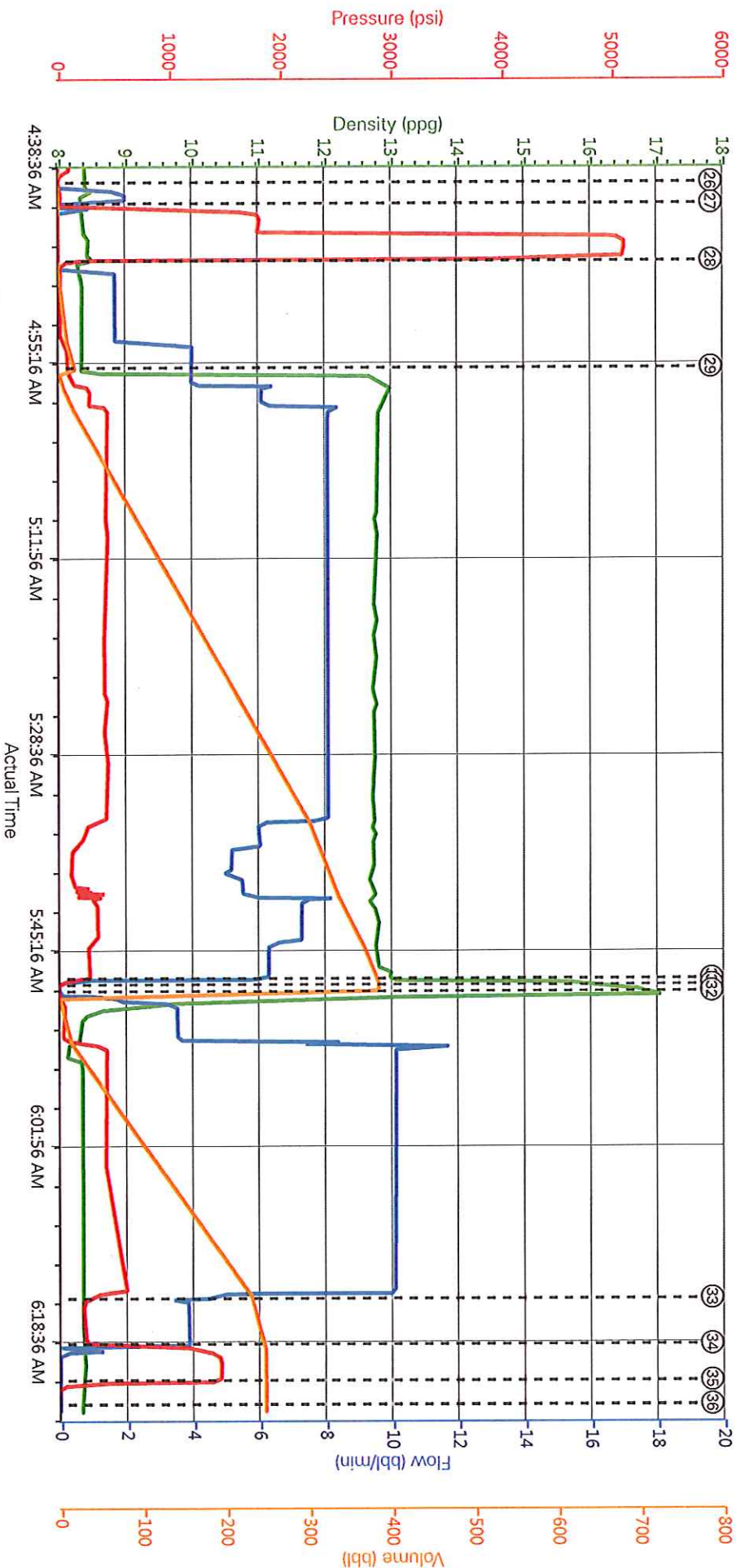
Edit

Customer: WPX ENERGY ROCKY MOUNTAIN LLC-EBUS
Representative: RICK MORTIMER

Job Date: 9/28/2014 7:33:19 PM
Sales Order #: 0901703727

Well: FEDERAL RG 713-29-298
ELITE # 8: DUSTIN SMITH / ROB EICKHOFF

WPX - FEDERAL RG 713-29-298 - 13 3/8 2ND STAGE



① Call Out	⑨ Prime Lines	⑰ Slow Rate	25 Comment	33 Slow Rate
② Pre-Convoy Safety Meeting	⑩ Test Lines	⑱ Slow Rate	26 Start Job	34 Bump Plug / Close Tool
③ Arrive At Loc	⑪ Pump Fresh Water Spacer	⑲ Bump Plug	27 Test Lines	35 Check Floats
④ Assessment Of Location Safety Meeting	⑫ Pump Lead Cement	20 Check Floats	21 Drop Opening Device For Multiple Stage Cementer	
⑤ Pre-Rig Up Safety Meeting	⑬ Pump Tail Cement	22 Open Multiple Stage Cementer	22 Open Multiple Stage Cementer	
⑥ Rig-Up Equipment	⑭ Shutdown	23 Circulate Well	23 Circulate Well	
⑦ Pre-Job Safety Meeting	⑮ Drop Top Plug	24 End Job	24 End Job	
⑧ Start Job	⑯ Pump Displacement			

HALIBURTON | iCem® Service

Created: 2014-09-28 09:05:20, Version: 3.0.121

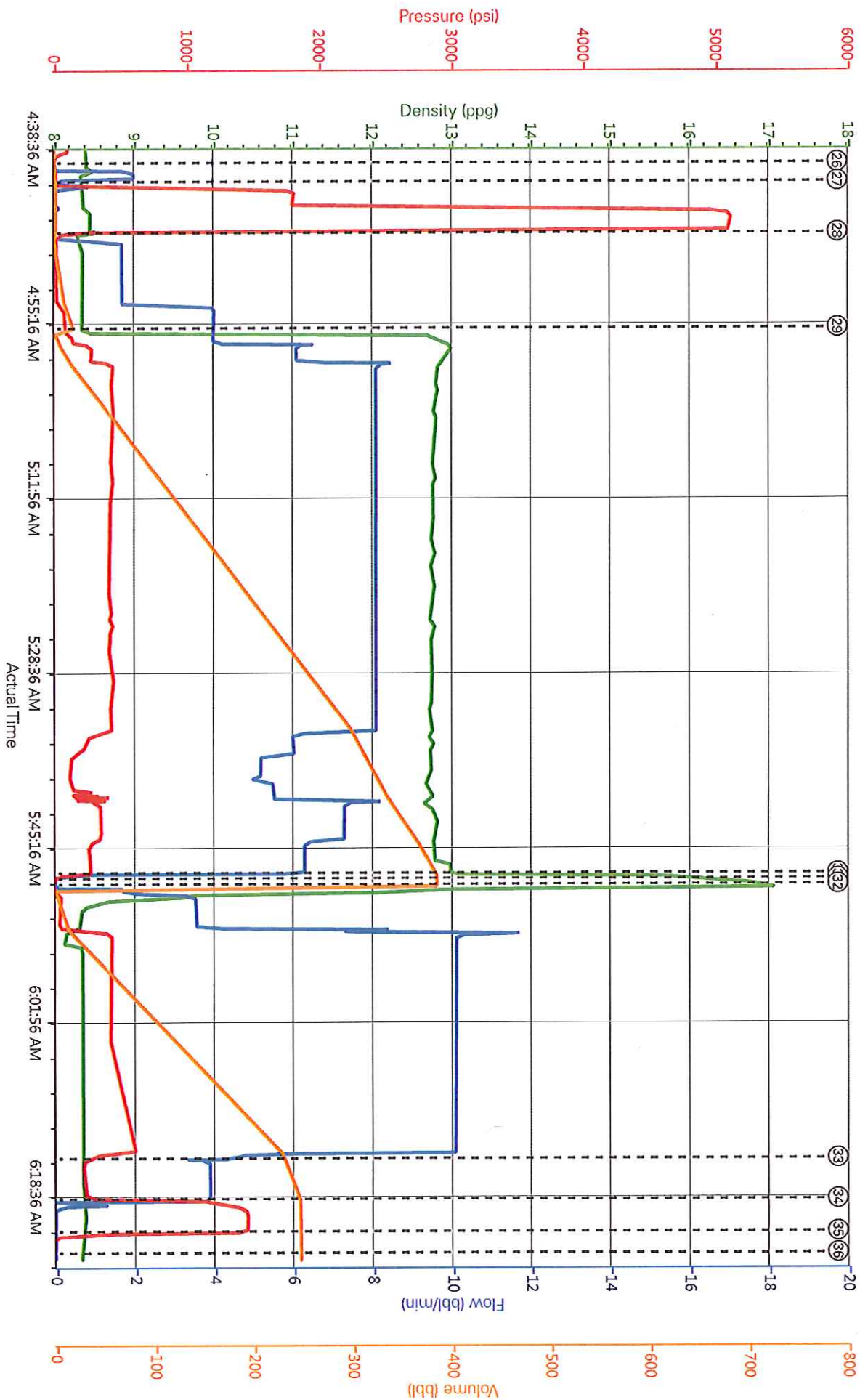
Edit

Customer : WPX ENERGY ROCKY MOUNTAIN LLC-EBUS
Representative : RICK MORTIMER

Job Date : 9/29/2014 4:02:12 AM
Sales Order # : 0901703727

Well : FEDERAL RG 713-29-298
ELITE #8 : DUSTIN SMITH / ROB EICKHOFF

WPX - FEDERAL RG 713-29-298 - 13 3/8 2ND STAGE



HALIBURTON | iCem® Service

Created: 2014-09-28 09:05:20, Version: 3.0.121

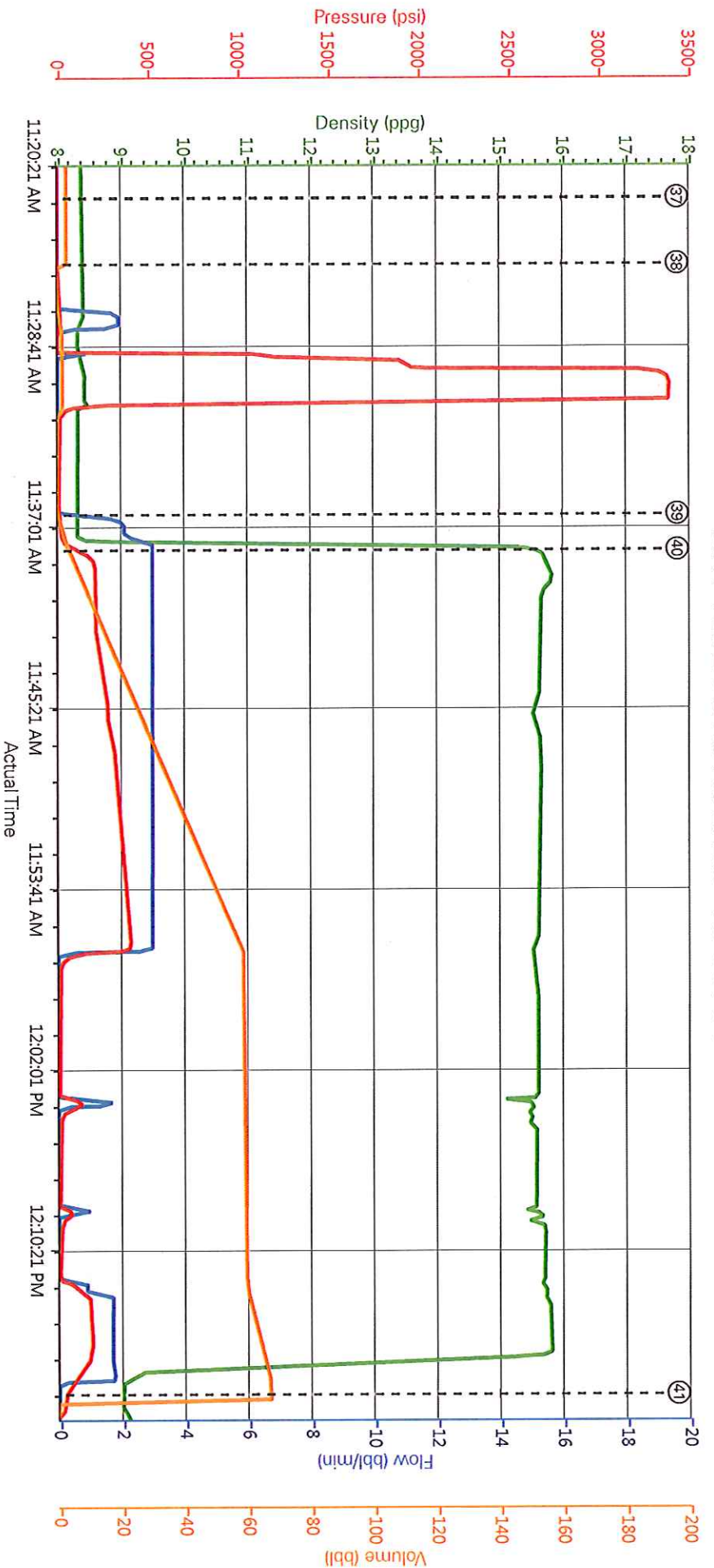
Edit

Customer : WPX ENERGY ROCKY MOUNTAIN LLC-EBUS
Representative : RICK MORTIMER

Job Date : 9/29/2014 4:02:12 AM
Sales Order # : 0901703727

Well : FEDERAL RG 713-29-298
ELITE #8 : DUSTIN SMITH / ROB EICKHOFF

WPX - FEDERAL RG 713-29-298 - TOPOUT # 1



① Call Out	⑩ Test Lines	⑲ Bump Plug	28 Pump Fresh Water Spacer	37 Start Job
② Pre-Convoy Safety Meeting	⑪ Pump Fresh Water Spacer	20 Check Floats	29 Pump Tail Cement	38 Test Lines
③ Arrive At Loc	⑫ Pump Lead Cement	21 Drop Opening Device For Multiple Stage Cementer	30 Shutdown	39 Pump Spacer 1
④ Assessment Of Location Safety Meeting	⑬ Pump Tail Cement	22 Open Multiple Stage Cementer	31 Drop Closing Plug	40 Pump Cement
⑤ Pre-Rig Up Safety Meeting	⑭ Shutdown	23 Circulate Well	32 Pump Displacement	41 End Job
⑥ Rig-Up Equipment	⑮ Drop Top Plug	24 End Job	33 Slow Rate	42 Pre-Rig Down Safety Meeting
⑦ Pre-Job Safety Meeting	⑯ Pump Displacement	25 Comment	34 Bump Plug / Close Tool	43 Rig-Down Equipment
⑧ Start Job	⑰ Slow Rate	26 Start Job	35 Check Floats	44 Pre-Convoy Safety Meeting
⑨ Prime Lines	⑱ Slow Rate	27 Test Lines	36 End Job	45 Crew Leave Location

▶ **HALLIBURTON** | iCem® Service

Created: 2014-09-28 09:05:20, Version: 3.0.121

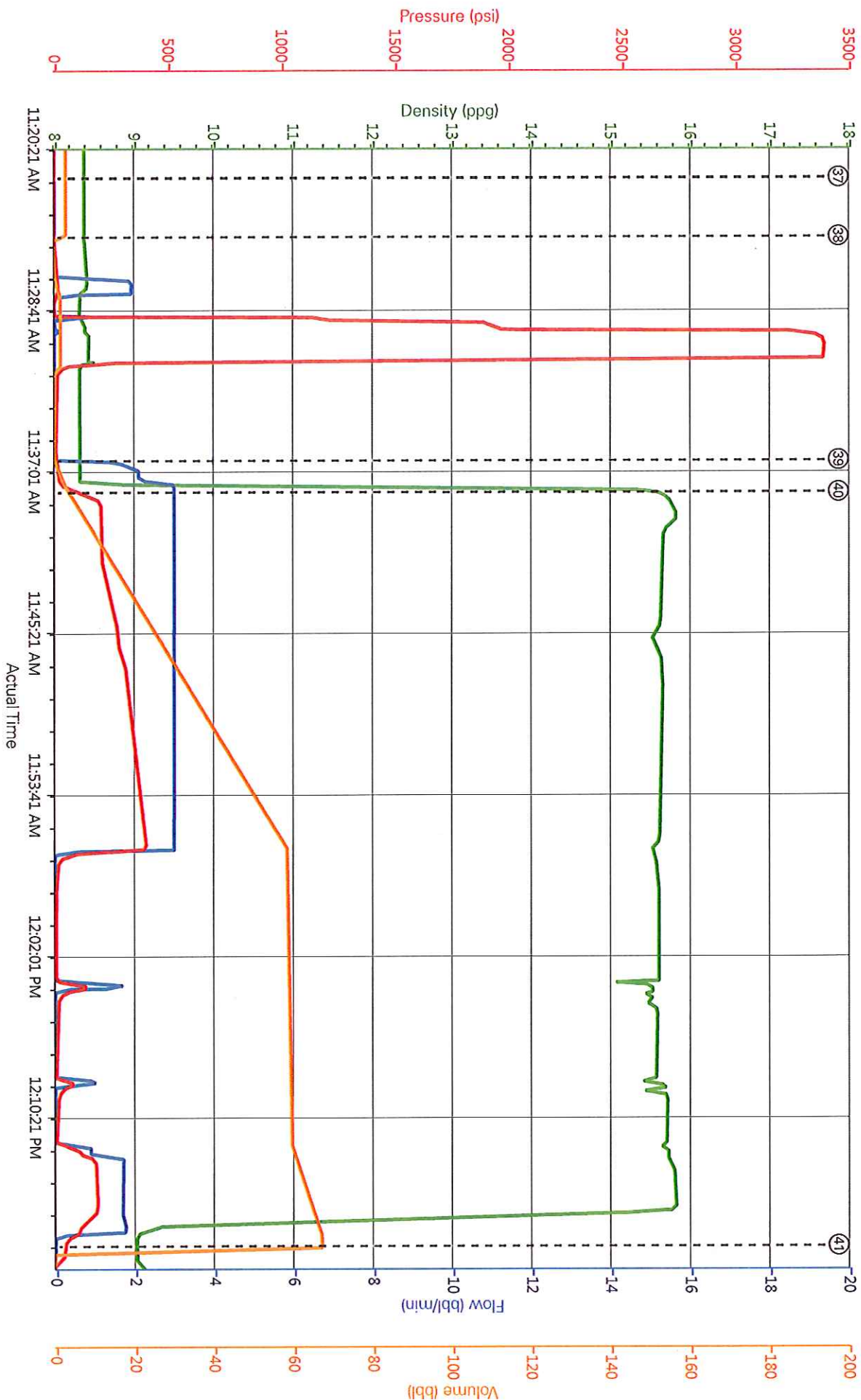
[Edit](#)

Customer : WPX ENERGY ROCKY MOUNTAIN LLC-EBUS
Representative : RICK MORTIMER

Job Date : 9/29/2014 4:02:12 AM
Sales Order # : 0901703727

Well : FEDERAL RG 713-29-298
ELITE # 8 : DUSTIN SMITH / ROB EICKHOFF

WPX - FEDERAL RG 713-29-298 - TOPOUT # 1



HALLIBURTON | iCem® Service

DH Density (ppg) Comb Pump Rate (bbt/min) PS Pump Press (psi) Pump Stg Tot (bbt)

Created: 2014-09-28 09:05:20, Version: 3.0.121

Edit

Customer: WPX ENERGY ROCKY MOUNTAIN LLC-EBUS
Representative: RICK MORTIMER

Job Date: 9/29/2014 4:02:12 AM
Sales Order #: 0901703727

Well: FEDERAL RG 713-29-298
ELITE # 8: DUSTIN SMITH / ROB EICKHOFF

Water Analysis Report

Company:	WPX	Date:	9/29/2014
Submitted by:	DUSTIN SMITH	Date Rec.:	9/29/2014
Attention:		S.O.#	901703727
Lease	FEDERAL RG	Job Type:	2 STAGE
Well #	713-29-298		

Specific Gravity	MAX	1
pH	8	7
Potassium (K)	5000	400 Mg/L
Calcium (Ca)	500	120 Mg/L
Iron (FE2)	300	0 Mg/L
Chlorides (Cl)	3000	0 Mg/L
Sulfates (SO4)	1500	UNDER 800 Mg/L
Chlorine (Cl2)		0 Mg/L
Temp	40-90	64 Deg
Total Dissolved Solids		840 Mg/L

Respectfully: DUSTIN SMITH
Title: CEMENTING SUPERVISOR
Location: Grand Junction, CO

Sales Order #:	0901703727	Line Item:	10	Survey Conducted Date:	9/29/2014
Customer:	WPX ENERGY ROCKY MOUNTAIN LLC-EBUS	Job Type (BOM):	CMT MULTIPLE STAGES BOM	API / UWI: (leave blank if unknown)	05-103-12120-00
Customer Representative:		Well Name:	FEDERAL	Well Number:	0080612834
Well Type:	DIRECTIONAL GAS	Well Country:	USA	Well State:	COLORADO
H2S Present:	No	Well County:	RIO BLANCO		

Dear Customer,

We hope that you were satisfied with the service quality of this job performed by Halliburton. It is the aim of our management and service personnel to deliver equipment and service of a standard unmatched in the service sector of the energy industry.

Please take the time to let us know if our performance met with your satisfaction. Please be as critical as possible to ensure we constantly improve our service. Your comments are of great value to us and are intended for the exclusive use of Halliburton.

CUSTOMER SATISFACTION SURVEY

CATEGORY	CUSTOMER SATISFACTION RESPONSE
Survey Conducted Date	The date the survey was conducted
Survey Interviewer	The survey interviewer is the person who initiated the survey.
Customer Participation	Did the customer participate in this survey? (Y/N)
Customer Representative	Enter the Customer representative name
HSE	Was our HSE performance satisfactory? Circle Y or N
Equipment	Were you satisfied with our Equipment? Circle Y or N
Personnel	Were you satisfied with our people? Circle Y or N
Customer Comment	Customer's Comment

CUSTOMER SIGNATURE

KEY PERFORMANCE INDICATORS

Cementing KPI Survey	
Type of Job	0
Select the type of job. (Cementing or Non-Cementing)	
Select the Maximum Deviation range for this Job	Vertical
What is the highest deviation for the job you just completed? This may not be the maximum well deviation.	
Total Operating Time (hours)	10
Total Operating Hours including Rig-up, Pumping, Rig-down. Enter in decimal format.	
HSE Incident, Accident, Injury	No
HSE Incident, Accident, Injury. This should be recordable incidents only.	
Was the job purpose achieved?	Yes
Was the job delivered correctly as per customer agreed design?	
Pumping Hours	6
Total number of hours pumping fluid on this job. Enter in decimal format.	
Type of Rig Classification Job Was Performed	Drilling Rig (Portable)
Type Of Rig (classification) Job Was Performed On	
Number Of JSAs Performed	6
Number Of JSAs Performed	
Was this a Primary Cement Job (Yes / No)	Yes
Primary Cement Job= Casing job, Liner job, or Tie-back job.	
Number of Unplanned Shutdowns	0
Unplanned shutdown is when injection stops for any period of time.	
Customer Non-Productive Rig Time (hrs)	0

	Last time due to Halliburton in the start, execution, or completion of an ordered service or product, or delays in a follow-on service. Enter in decimal format. 0 if none.
Top	Did We Run Top And Bottom Casing Wiper Plugs? If a top plug was run, was the plug bumped? (Yes/No/N/A) If a top plug was run, was the plug bumped? (Yes/No/N/A) If applicable, did the floats hold? (Yes/No/N/A) If applicable, did the floats hold? (Yes/No/N/A)
Yes	
90	Mixing Density of Job Stayed in Designed Density Range (0-100%) Density Range defined as +/- .20 ppg. Calculation: Total BBLs cement mixed at designed density divided by total BBLs of cement multiplied by 100
90	Pump Rate (percent) of Job Stayed At Designed Pump Rate Pump Rate range defined as +/- 1bbbl/min. Calculation: Total BBLs of fluid pumped at the designed rate divided by Total BBLs of fluid pumped, multiplied by 100
NO	If applicable, were there returns throughout the job? (Yes/No/N/A) If applicable, were there returns throughout the job? (Yes/No/N/A)
0	Nbr of Remedial Plug Jobs Rqd - HES Number Of Remedial Plug Jobs Needed After Primary Plug Pumped By HES
0	Nbr of Remedial Sqz Jobs Rqd - HES Number Of Remedial Squeeze Jobs Required After Primary Job Performed By HES