



Kerr-McGee Oil & Gas Onshore LP

A subsidiary of Anadarko Petroleum Corporation

1099 18th Street
Denver, CO 80202
720-929-6000

May 4, 2015

Matt Lepore
Director, Colorado Oil and Gas Conservation Commission
Department of Natural Resources
The Chancery Building
1120 Lincoln Street, Suite 801
Denver, CO 80203

Re: **30 Day Certification Letter - 318A.e**
ADAMSON 37C-28HZ (Doc No. 400833317)
Township 2 North, Range 65 West
Section 21: NESW
Weld County, Colorado
Unit Acreage: 240
Unit Spacing: 2N-65W-21 SENW, E2SW; 28 E2NW, NESW
Weld County, Colorado

Dear Director Lepore:

Kerr McGee Oil and Gas Onshore LP ("KMG") hereby certifies that KMG owns one hundred percent (100%) of the leasehold interest in the mineral rights in the proposed spacing unit. KMG hereby respectfully requests approval of this boundary well.

If you have any questions or issues regarding this permit, please contact Cheryl Light at (720) 929-6461.

Sincerely,

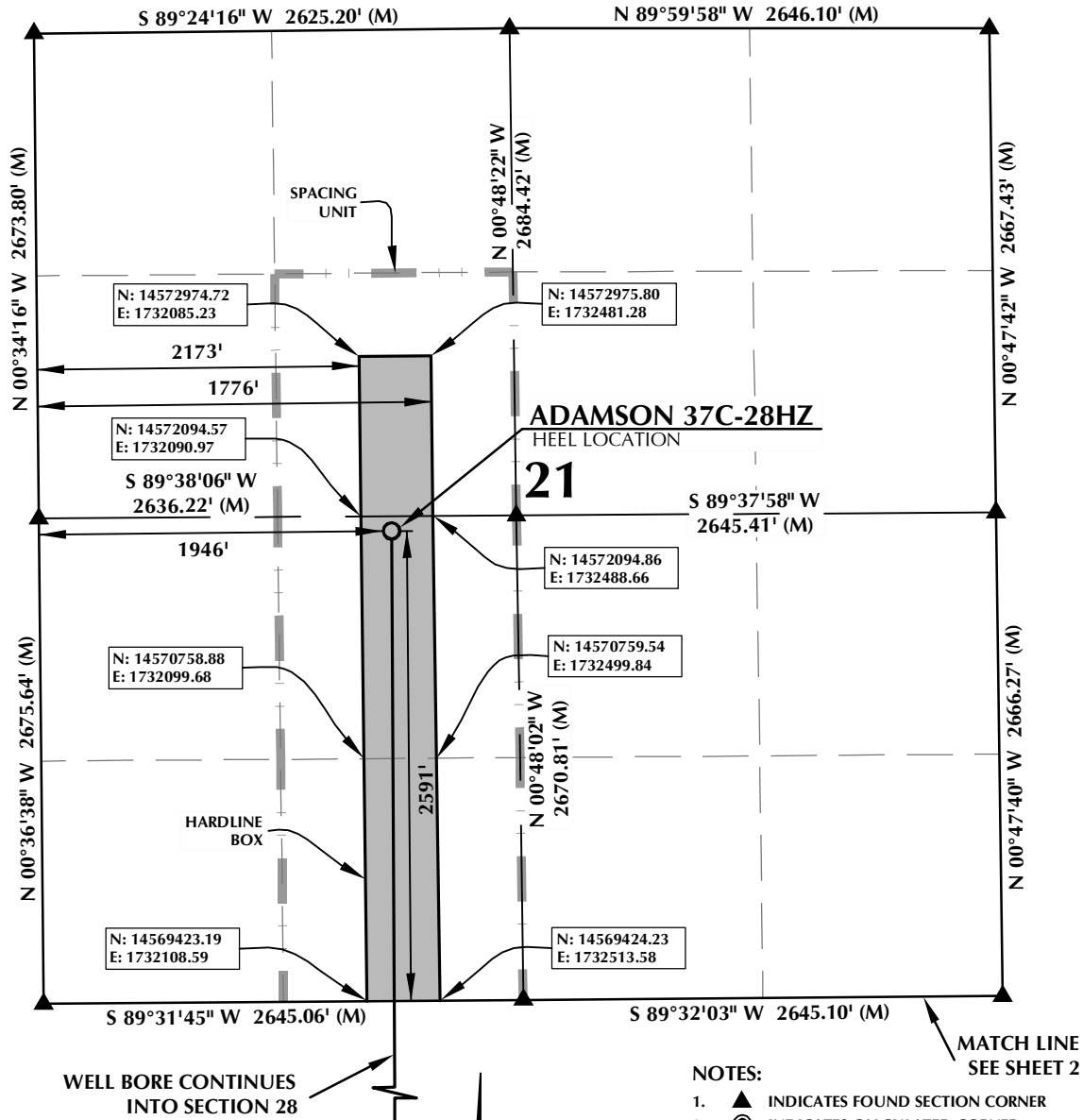
Kerr-McGee Oil and Gas Onshore LP

A handwritten signature in blue ink, appearing to read 'Craig Richardson'.

Craig Richardson
Regulatory Analyst II

Enclosure

SPACING UNIT: ADAMSON 37C-28HZ T2N, R65W



HEEL LOCATION
N: 14,572,013.68'
E: 1,732,259.02'

LATITUDE= 40.123881°
LONGITUDE= -104.671457°

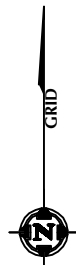
LATITUDE= 40°07'25.971\"
LONGITUDE= -104°40'17.246"

AVAILABLE FOOTAGE
7054'

BOTTOM HOLE LOCATION
N: 14,566,523.02'
E: 1,732,257.80'

LATITUDE= 40.108803°
LONGITUDE= -104.671534°

LATITUDE= 40°06'31.691\"
LONGITUDE= -104°40'17.522"



SCALE: 1" = 1000'

NOTES:

1. ▲ INDICATES FOUND SECTION CORNER
2. ● INDICATES CALCULATED CORNER
3. BASIS OF BEARING DERIVED FROM COLORADO COORDINATE SYSTEM 1983 NORTH ZONE UNLESS OTHERWISE NOTED.
4. DRAWING NORTHING / EASTING COORDINATES ARE BASED ON COLORADO COORDINATE SYSTEM 1983 NORTH ZONE UNLESS OTHERWISE NOTED.
5. COMBINED SCALE FACTOR: .99972882
6. N / E COORDINATES ARE BASED ON UTM COORDINATE SYSTEM NAD83, ZONE 13
7. THIS EXHIBIT DOES NOT REPRESENT A LAND SURVEY PLAT OR IMPROVEMENT SURVEY PLAT AS DEFINED BY C.R.S. 38-51-102 AND CANNOT BE RELIED UPON TO DETERMINE OWNERSHIP.

WELL PAD - ADAMSON 14N-28HZ

ADAMSON 37C-28HZ
SPACING UNIT EXHIBIT
2591' FSL & 1946' FWL NESW (HEEL)
LOCATED IN SECTION 21
2381' FSL & 1908' FWL NESW (BOTTOM)
LOCATED IN SECTION 28
T2N, R65W, 6TH P.M.
WELD COUNTY, COLORADO

**Kerr-McGee Oil &
Gas Onshore L.P.**
1099 18th Street
Denver, Colorado 80202



CONSULTING, LLC

SHERIDAN OFFICE
1095 Saberton Avenue
Sheridan, Wyoming 82801
Phone 307-674-0609

LOVELAND OFFICE
1635 Foxtrail Drive, Suite 204
Loveland, Colorado 80538
Phone 970-776-4331

DRAFTED BY: LMO

CHECKED BY: BJR

SHEET NO:

DATE DRAFTED: 2/24/15

DATE SURVEYED: 12/5/14

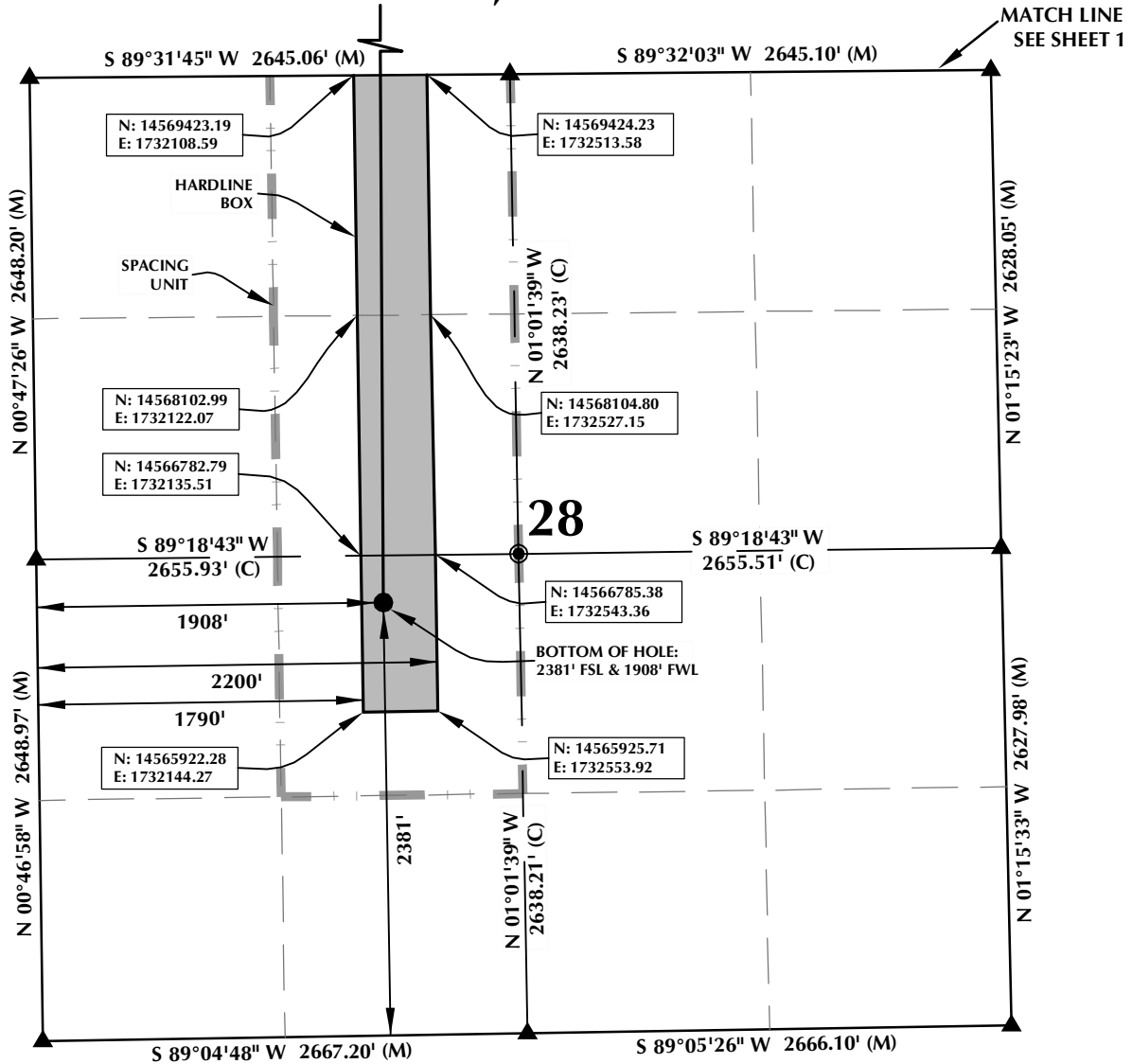
1

REVISED:

FILE NAME: 14-107

1 OF 2

SPACING UNIT: ADAMSON 37C-28HZ T2N, R65W



HEEL LOCATION
N: 14,572,013.68'
E: 1,732,259.02'

LATITUDE= 40.123881°
LONGITUDE= -104.671457°

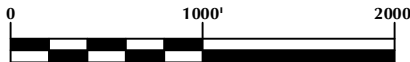
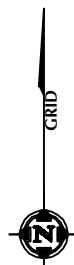
LATITUDE= 40°07'25.971"
LONGITUDE= -104°40'17.246"

AVAILABLE FOOTAGE
7054'

BOTTOM HOLE LOCATION
N: 14,566,523.02'
E: 1,732,257.80'

LATITUDE= 40.108803°
LONGITUDE= -104.671534°

LATITUDE= 40°06'31.691"
LONGITUDE= -104°40'17.522"



SCALE: 1" = 1000'

NOTES:

1. ▲ INDICATES FOUND SECTION CORNER
2. ● INDICATES CALCULATED CORNER
3. BASIS OF BEARING DERIVED FROM COLORADO COORDINATE SYSTEM 1983 NORTH ZONE UNLESS OTHERWISE NOTED.
4. DRAWING NORTHING / EASTING COORDINATES ARE BASED ON COLORADO COORDINATE SYSTEM 1983 NORTH ZONE UNLESS OTHERWISE NOTED.
5. COMBINED SCALE FACTOR: .99972882
6. N / E COORDINATES ARE BASED ON UTM COORDINATE SYSTEM NAD83, ZONE 13
7. THIS EXHIBIT DOES NOT REPRESENT A LAND SURVEY PLAT OR IMPROVEMENT SURVEY PLAT AS DEFINED BY C.R.S. 38-51-102 AND CANNOT BE RELIED UPON TO DETERMINE OWNERSHIP.

WELL PAD - ADAMSON 14N-28HZ

ADAMSON 37C-28HZ
SPACING UNIT EXHIBIT
2591' FSL & 1946' FWL NESW (HEEL)
LOCATED IN SECTION 21
2381' FSL & 1908' FWL NESW (BOTTOM)
LOCATED IN SECTION 28
T2N, R65W, 6TH P.M.
WELD COUNTY, COLORADO

**Kerr-McGee Oil &
Gas Onshore L.P.**
1099 18th Street
Denver, Colorado 80202



CONSULTING, LLC

SHERIDAN OFFICE
1095 Saberton Avenue
Sheridan, Wyoming 82801
Phone 307-674-0609

LOVELAND OFFICE
1635 Foxtrail Drive, Suite 204
Loveland, Colorado 80538
Phone 970-776-4331

DRAFTED BY:	LMO	CHECKED BY:	BJR	SHEET NO:
DATE DRAFTED:	2/24/15	DATE SURVEYED:	12/5/14	2
REVISED:		FILE NAME:	14-107	2 OF 2