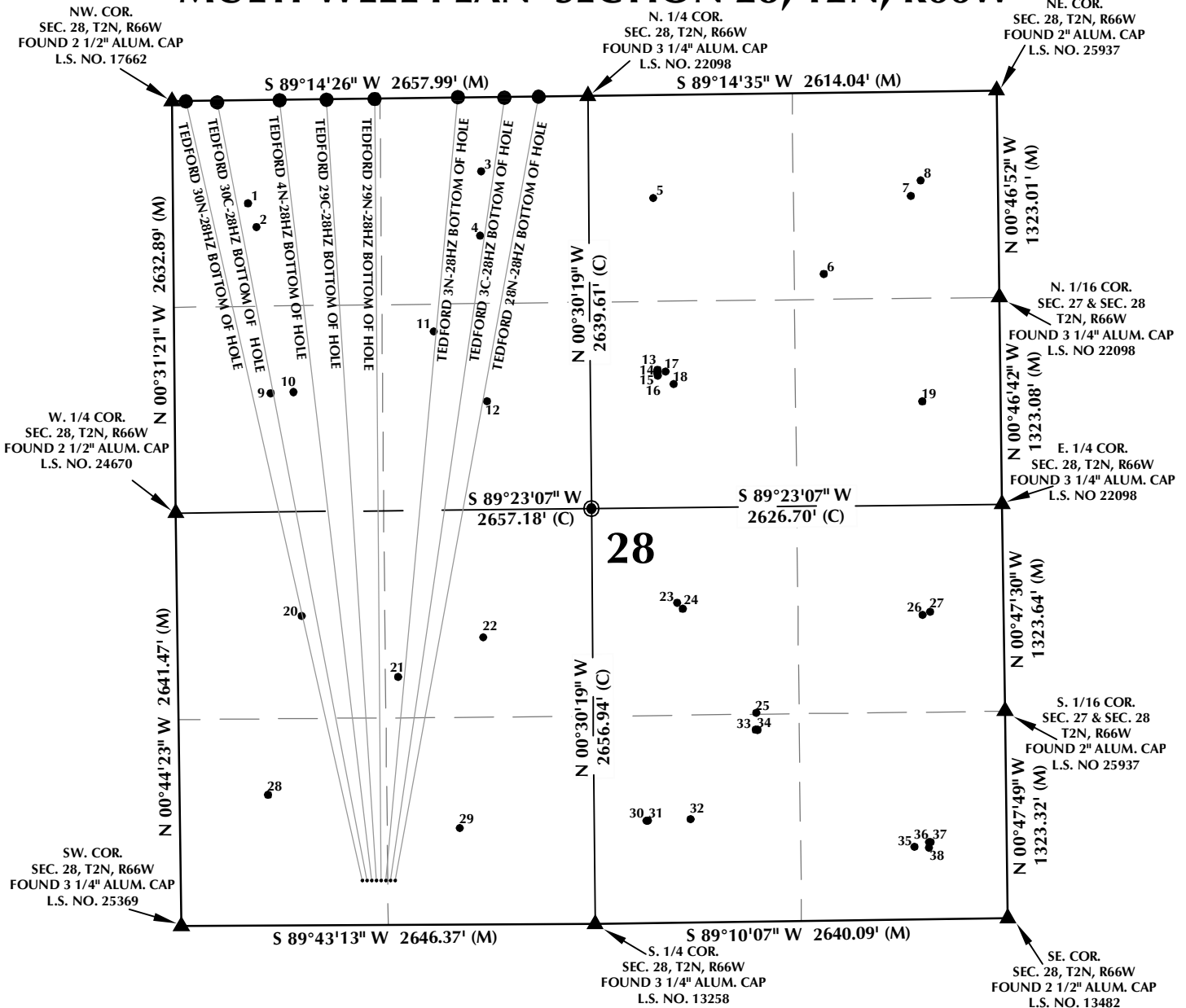


MULTI-WELL PLAN SECTION 28, T2N, R66W



WELL NOTES:

TEDFORD 30N-28HZ
 SURFACE: 286' FSL, 1162' FWL
 BOTTOM HOLE: 1' FNL, 87' FWL

TEDFORD 30C-28HZ
 SURFACE: 286' FSL, 1192' FWL
 BOTTOM HOLE: 1' FNL, 286' FWL

TEDFORD 4N-28HZ
 SURFACE: 285' FSL, 1222' FWL
 BOTTOM HOLE: 1' FNL, 687' FWL

TEDFORD 29C-28HZ
 SURFACE: 285' FSL, 1252' FWL
 BOTTOM HOLE: 1' FNL, 987' FWL

TEDFORD 29N-28HZ
 SURFACE: 285' FSL, 1282' FWL
 BOTTOM HOLE: 1' FNL, 1295' FWL

TEDFORD 3N-28HZ
 SURFACE: 285' FSL, 1312' FWL
 BOTTOM HOLE: 1' FNL, 1827' FWL

TEDFORD 3C-28HZ
 SURFACE: 285' FSL, 1342' FWL
 BOTTOM HOLE: 1' FNL, 2125' FWL

TEDFORD 28N-28HZ
 SURFACE: 284' FSL, 1372' FWL
 BOTTOM HOLE: 1' FNL, 2344' FWL

NOTES:

- ▲ INDICATES FOUND SECTION CORNER
- INDICATES CALCULATED CORNER
- BASIS OF BEARING DERIVED FROM COLORADO COORDINATE SYSTEM 1983 NORTH ZONE UNLESS OTHERWISE NOTED.
- ALL MEASURED DISTANCES ARE GRID.
COMBINED SCALE FACTOR: .99972633
- WELL FOOTAGES ARE MEASURED AT RIGHT ANGLES TO THE SECTION LINES.



SCALE: 1" = 1000'

WELL PAD - TEDFORD 29C-28HZ

MULTI-WELL PLAN
 TEDFORD 30N-28HZ, TEDFORD 30C-28HZ,
 TEDFORD 4N-28HZ, TEDFORD 29C-28HZ,
 TEDFORD 29N-28HZ, TEDFORD 3N-28HZ,
 TEDFORD 3C-28HZ & TEDFORD 28N-28HZ
 LOCATED IN SECTION 28
 T2N, R66W, 6TH P.M.
 WELD COUNTY, COLORADO

**Kerr-McGee Oil &
 Gas Onshore L.P.**
 1099 18th Street
 Denver, Colorado 80202



CONSULTING, LLC

SHERIDAN OFFICE
 2155 North Main Street
 Sheridan, Wyoming 82801
 Phone 307-674-0609

LOVELAND OFFICE
 1635 Foxtrail Drive, Suite 204
 Loveland, Colorado 80538
 Phone 970-776-4331

DRAFTED BY: LMO	CHECKED BY: BJR	SHEET NO: 1 1 OF 2
DATE DRAFTED: 12/29/14	DATE SURVEYED: 10/4/14	
REVISED: 1/16/15	FILE NAME: 14-76	

MULTI-WELL PLAN SECTION 28, T2N, R66W

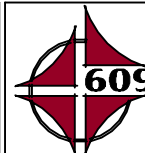
NUMBER	WELL NAME	API NUMBER	LATITUDE (NAD 83)	LONGITUDE (NAD 83)	SURFACE ELEVATION	TOTAL DEPTH
1	AMOCO ENERGY SMITS UNIT C 1	05-123-07969	40.114535	-104.789979	4916.7	4770
2	GOTMILK W 28-4JI	05-123-19641	40.114120	-104.789790	4914.6	8004
3	*COBURN W 28-3 JI	05-123-20785	40.115068	-104.784642	N/A	8025
4	CLEMENTINE B COBURN B UNIT 1	05-123-09593	40.113936	-104.784679	4936.9	4831
5	*URSULA 1	05-123-09820	40.114574	-104.780713	N/A	4812
6	MAIER 1	05-123-09189	40.113216	-104.776825	4955.3	8045
7	URSULA 2	05-123-09920	40.114574	-104.774819	4967.0	4800
8	MAIER 41-28	05-123-20797	40.114841	-104.774596	4969.1	8200
9	GOTMILK W 28-5JI	05-123-21126	40.111200	-104.789492	4915.3	8045
10	AMOCO ENERGY SMITS UNIT C 2	05-123-09597	40.111216	-104.788971	4918.5	4901
11	FEHRN 2-28	05-123-14443	40.112264	-104.785758	4921.8	8037
12	CLEMENTINE B COBURN B UNIT 1	05-123-09163	40.111030	-104.784548	4927.8	4800
13	Maier 31-28	05-123-35605	40.111558	-104.780644	4931.3	8180
14	Maier 4-2-28	05-123-35604	40.111523	-104.780644	4931.1	8100
15	Maier 8-4-28	05-123-35606	40.111490	-104.780645	4931.2	8510
16	Maier 4-4-28	05-123-35607	40.111456	-104.780643	4931.3	8110
17	MAIER 32-28	05-123-20760	40.111525	-104.780462	4931.4	8027
18	ANGELA 1	05-123-09915	40.111305	-104.780278	4931.9	4790
19	ANGELA 42-28	05-123-15126	40.110964	-104.774596	4964.8	7602
20	FEHRN 3-28	05-123-15475	40.107287	-104.788828	4957.9	7614
21	FEHRN 1-28	05-123-08835	40.106203	-104.786632	4975.2	8063
22	*FEHRN 1	05-123-09487	40.106887	-104.784680	N/A	4887
23	DIANE 33-28	05-123-21366	40.107470	-104.780241	4960.7	8196
24	MCQUEARY 28-2	05-123-23687	40.107367	-104.780105	4960.1	4881
25	DIANE 1	05-123-10026	40.105519	-104.778453	4969.4	8050
26	ELAINE 43-28	05-123-23829	40.107219	-104.774634	4960.0	5110
27	DIANE 43-28	05-123-20798	40.107268	-104.774456	4959.6	8084
28	FEHRN W 28-13	05-123-18799	40.104151	-104.789627	4965.7	8080
29	FEHRN 4-28	05-123-15557	40.103542	-104.785253	4975.1	8064
30	Maier 4A-28H	05-123-37429	40.103641	-104.780982	4975.6	11825
31	Maier 4B-28H	05-123-37428	40.103646	-104.780951	4975.6	12007
32	*BREICKLER 1	05-123-10840	40.103662	-104.779973	N/A	7570
33	Diane 6-4-28	05-123-35601	40.105223	-104.778469	4973.3	8325
34	Diane 8-6-28	05-123-35602	40.105221	-104.778424	4973.4	8279
35	DIANE 44-28	05-123-19926	40.103149	-104.774859	4989.3	8075
36	Maier 4C-28H	05-123-37431	40.103229	-104.774525	4990.6	11630
37	Maier 4D-28H	05-123-37430	40.103229	-104.774488	4990.5	11977
38	HSR-ARISTOCRAT 13-27A	05-123-19603	40.103130	-104.774526	4990.2	8320

NOTES:

- * INDICATES EXISTING WELLS THAT WERE NOT SURVEYED BUT DERIVED FROM COLORADO OIL AND GAS CONSERVATION COMMISSION (COGCC).

**EXISTING WELL EXHIBIT
SECTION 28, T2N, R66W, 6TH P.M.
WELD COUNTY, COLORADO**

**Kerr-McGee Oil &
Gas Onshore L.P.
1099 18th Street
Denver, Colorado 80202**



CONSULTING, LLC

SHERIDAN OFFICE **LOVELAND OFFICE**
 2155 North Main Street 1635 Foxtrail Drive, Suite 204
 Sheridan, Wyoming 82801 Loveland, Colorado 80538
 Phone 307-674-0609 Phone 970-776-4331

DRAFTED BY:	LMO	CHECKED BY:	BJR	SHEET NO: 2 2 OF 2
DATE DRAFTED:	10/9/14	DATE SURVEYED:	10/4/14	
REVISED:		FILE NAME:	14-76	