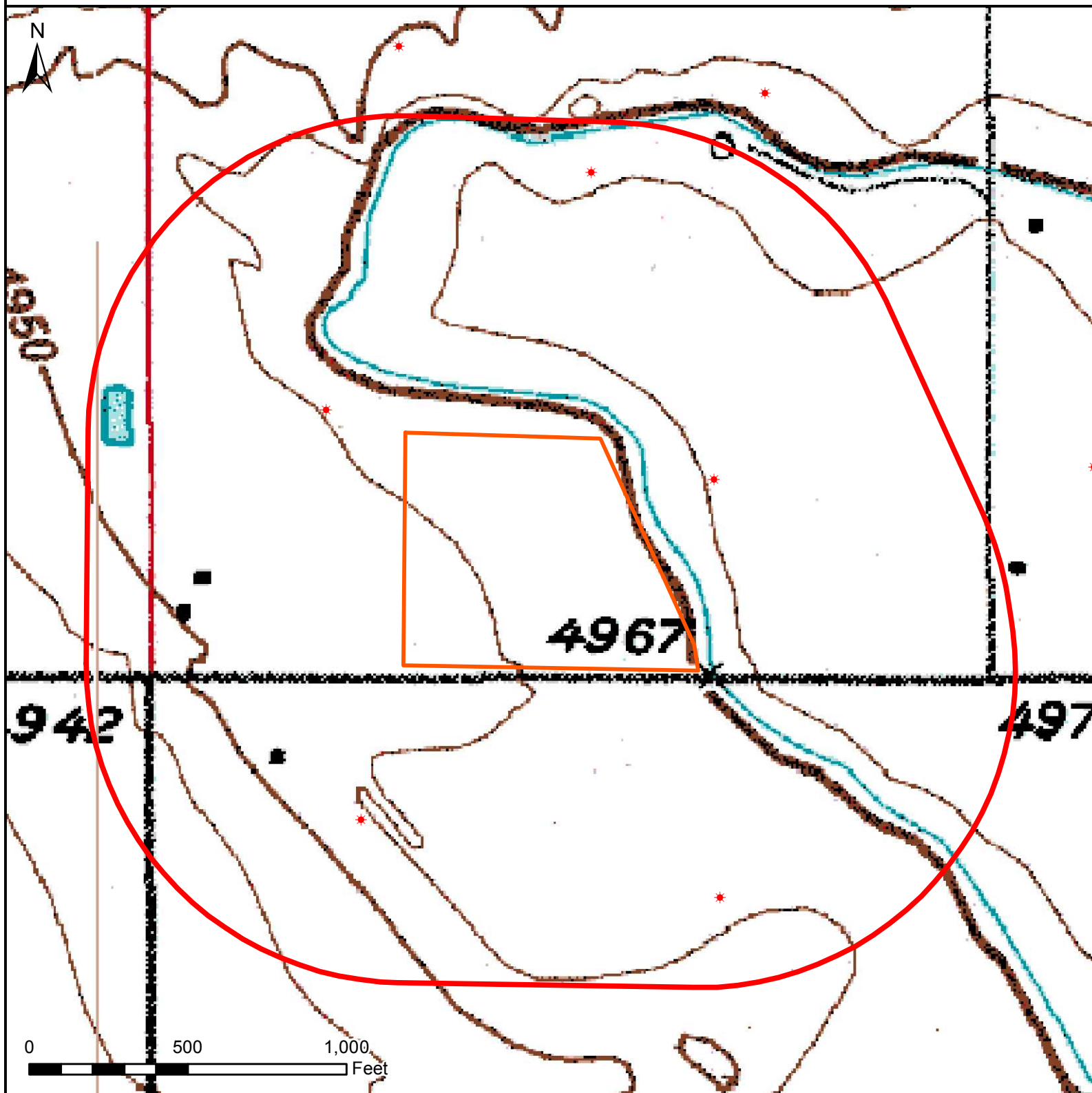


HYDROLOGY MAP TEDFORD 29C-28HZ






Nearest Surface Water Feature

Ditch: 29' E, Elev: 4967'
Pond: 856' W, Elev: 4953'
Loc Elev: 4965'

All measurements are made from edge of disturbed area.

Legend

-  1000' buffer
-  Well pad (proposed)
-  Existing oil/gas well (COGCC)



Date created: 3/19/2015
Created by: APC Regulatory GIS
Scale: 1:5,000
Projection: NAD83 UTM 13N