

From: [Jeanell Ries](#)
To: leigh.bradshaw@state.co.us
Cc: [Derek Petrie](#); [John Kroshus](#); [Neel Duncan](#); [Rick Ohlmeier](#)
Subject: RE: NGL C5 API: 123-40645
Date: Wednesday, May 13, 2015 12:29:50 PM

Hi Leigh-

The wireline company that ran the log had the bond tool turned on in the liner (not needed). What you're seeing is the slotted liner, not cement. I can see how the slots make it confusing (interesting too).

Thanks,

Jeanell Ries
Drilling Engineer
jeanell.ries@iptenergyservices.com

P: 720.420.5736
C: 720.261.9249
F: 720.420.5800



Integrated Petroleum Technologies, Inc.
1707 Cole Blvd, Suite 200
Golden, CO 80401
www.iptenergyservices.com

From: Derek Petrie
Sent: Wednesday, May 13, 2015 11:52 AM
To: Neel Duncan; John Kroshus
Cc: Jeanell Ries
Subject: FW: NGL C5 API: 123-40645

See message below.

Thanks,
Derek Petrie
Regulatory Supervisor
P: 720-420-5748
M: 307-389-8350
Fax: 720-420-5800

derek.petrie@iptenergyservices.com | www.iptenergyservices.com



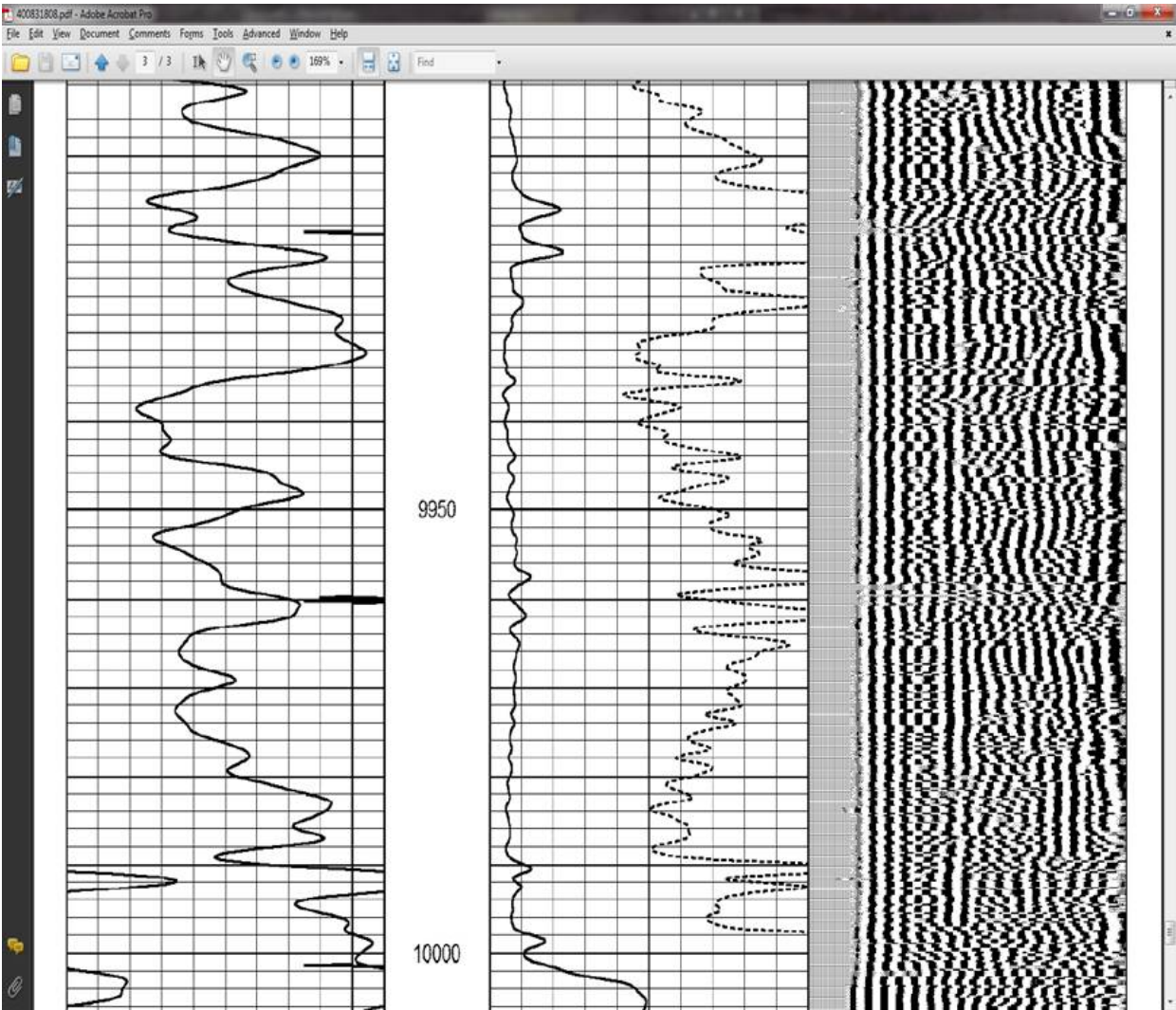
Integrated Petroleum Technologies, Inc. | 1707 Cole Blvd, Suite 200 | Golden, CO 80401

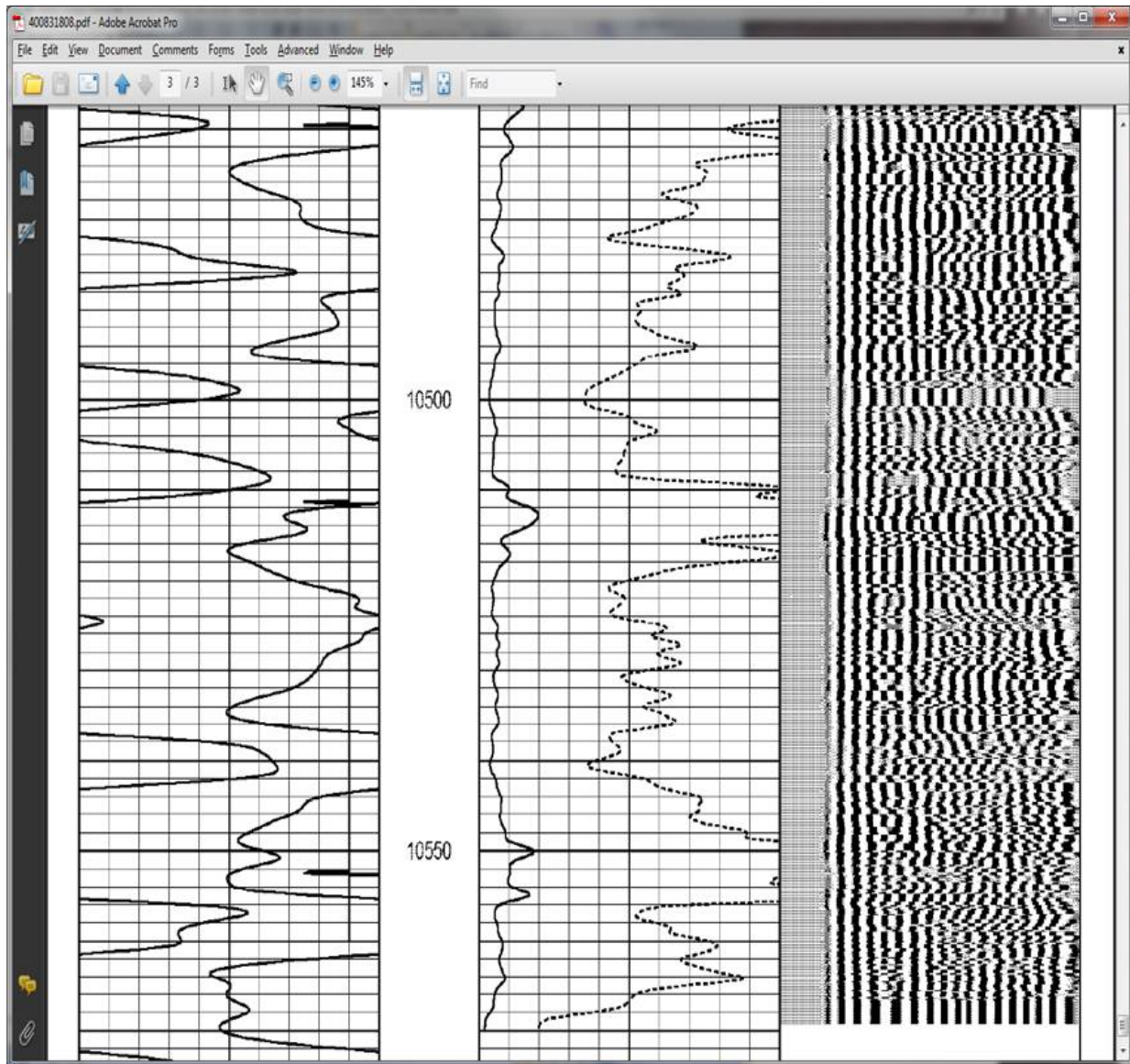
From: Leigh Bradshaw - DNR [<mailto:leigh.bradshaw@state.co.us>]
Sent: Wednesday, May 13, 2015 11:49 AM
To: Derek Petrie
Subject: RE: NGL C5 API: 123-40645

Hi Derek,

The CBL I have goes from 7" to 4.5" and ends at 10570'; had to have been run in the liner, right? If there isn't cement below 8783', what is causing the negative waveform?

Appreciate your help, Leigh





From: Derek Petrie [mailto:derek.petrie@iptenergyservices.com]
Sent: Wednesday, May 13, 2015 10:36 AM
To: Paul Gottlob; leigh.bradshaw@state.co.us
Subject: RE: NGL C5 API: 123-40645

The 4-1/2" liner was not cemented. CBL run on the intermediate and indicating excellent bond.

Thanks,
Derek Petrie
Regulatory Supervisor
P: 720-420-5748
M: 307-389-8350
Fax: 720-420-5800

derek.petrie@iptenergyservices.com | www.iptenergyservices.com



From: Paul Gottlob
Sent: Tuesday, May 12, 2015 6:05 PM
To: Derek Petrie
Subject: Fwd: NGL C5 API: 123-40645

Can you check if they did cement the liner?

Sent from my T-Mobile 4G LTE Device

----- Originalmessage-----

From: Leigh Bradshaw - DNR <leigh.bradshaw@state.co.us>
Date: 05/12/2015 5:55 PM (GMT-07:00)
To: Paul Gottlob <paul.gottlob@iptenergyservices.com>
Cc:
Subject: NGL C5 API: 123-40645

Hello Paul, I'm reviewing the form 5 on this well & have a couple questions: Was a separate CBL run on the 1st string? The liner appears to be cemented, please provide cement job summary for the liner; & confirm the # of sacks of cement used. My understanding is NGL requested a rush on approvals; therefore, please send this information by 5/14/2015

Thank you, Leigh
Leigh Bradshaw
Engineering Technician



P 303.894.2100 x5187 | F 303.894.2109
1120 Lincoln Street, Suite 801, Denver, CO 80203
leigh.bradshaw@state.co.us | www.colorado.gov/cogcc

The information contained in this e-mail message (and its attachments) may be privileged, confidential and protected from disclosure. If you are not the intended recipient, please do not read, copy, use, or disclose this communication to others. If you think that you have received this e-mail message in error, please immediately e-mail the sender, then delete this message and any "reply" response from your system. This electronic mail transmission is not intended (and may not be construed or deemed for any purpose) to contain or be an electronic signature.

The information contained in this e-mail message (and its attachments) may be privileged, confidential and protected from disclosure. If you are not the intended recipient, please do not read, copy, use, or disclose this communication to others. If you think that you have received this e-mail message in error, please immediately e-mail the sender, then delete this message and any "reply" response from your system. This electronic mail transmission is not intended (and may not be construed or deemed for any purpose) to contain or be an electronic signature.
