



# Kerr-McGee Oil & Gas Onshore LP

A subsidiary of Anadarko Petroleum Corporation

1099 18<sup>th</sup> Street  
Denver, CO 80202  
720-929-6000

May 4, 2015

Matt Lepore  
Director, Colorado Oil and Gas Conservation Commission  
Department of Natural Resources  
The Chancery Building  
1120 Lincoln Street, Suite 801  
Denver, CO 80203

Re: **30 Day Certification Letter - 318A.e**  
ADAMSON 13N-28HZ (Doc No. 400833183)  
Township 2 North, Range 65 West  
Section 21: NWSW  
Weld County, Colorado  
Unit Acreage: 480  
Unit Spacing: 2N-65W-20 SENE, E2SE; 21 SWNW, W2SW; 28 W2NW,  
NWSW; 29 E2NE, NESE  
Weld County, Colorado

Dear Director Lepore:

Kerr McGee Oil and Gas Onshore LP ("KMG") hereby certifies that KMG owns one hundred percent (100%) of the leasehold interest in the mineral rights in the proposed spacing unit. KMG hereby respectfully requests approval of this boundary well.

If you have any questions or issues regarding this permit, please contact Cheryl Light at (720) 929-6461.

Sincerely,

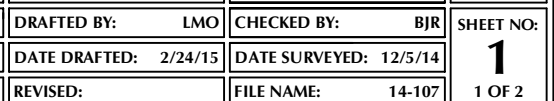
**Kerr-McGee Oil and Gas Onshore LP**

A blue ink signature of Craig Richardson, consisting of a stylized 'C' followed by a horizontal line.

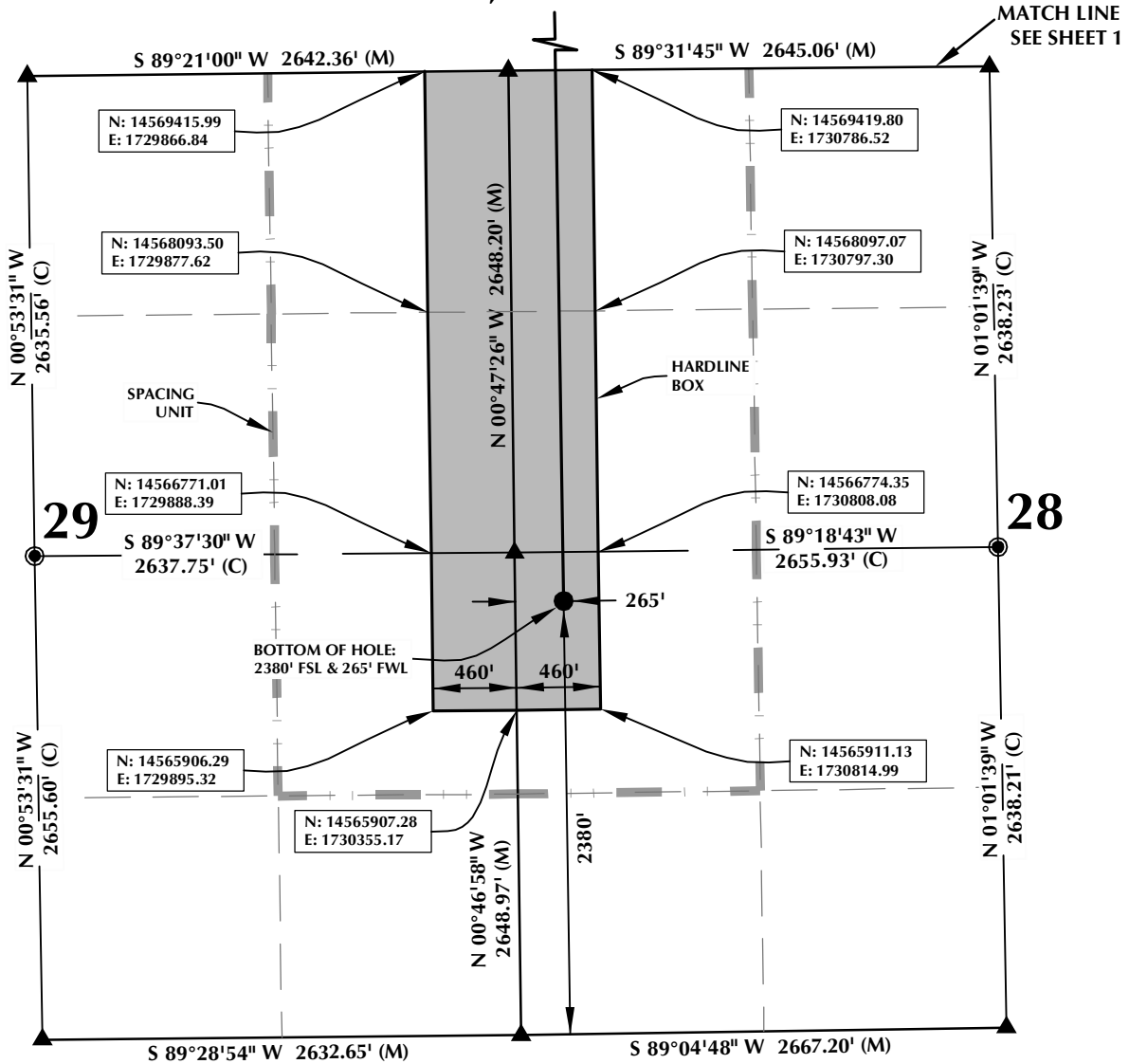
Craig Richardson  
Regulatory Analyst II

Enclosure

\\ANADARKO\2014\2014\_107\_ADAMSON\_SEC\_21\_T2N\_R65W\PLATS\HARDLINES\ADAMSON 13N-28HZ HARDLINE.dwg, 2/24/2015 4:08:21 PM, Isa



# SPACING UNIT: ADAMSON 13N-28HZ T2N, R65W



**HEEL LOCATION**  
N: 14,572,009.32'  
E: 1,730,562.61'

LATITUDE= 40.123886°  
LONGITUDE= -104.677526°

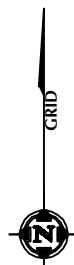
LATITUDE= 40°07'25.989"  
LONGITUDE= -104°40'39.092"

**AVAILABLE FOOTAGE**  
7064'

**BOTTOM HOLE LOCATION**  
N: 14,566,505.32'  
E: 1,730,615.29'

LATITUDE= 40.108771°  
LONGITUDE= -104.677409°

LATITUDE= 40°06'31.575"  
LONGITUDE= -104°40'38.671"



SCALE: 1" = 1000'

## NOTES:

1. ▲ INDICATES FOUND SECTION CORNER
2. ● INDICATES CALCULATED CORNER
3. BASIS OF BEARING DERIVED FROM COLORADO COORDINATE SYSTEM 1983 NORTH ZONE UNLESS OTHERWISE NOTED.
4. DRAWING NORTHING / EASTING COORDINATES ARE BASED ON COLORADO COORDINATE SYSTEM 1983 NORTH ZONE UNLESS OTHERWISE NOTED.
5. COMBINED SCALE FACTOR: .99972882
6. N / E COORDINATES ARE BASED ON UTM COORDINATE SYSTEM NAD83, ZONE 13
7. THIS EXHIBIT DOES NOT REPRESENT A LAND SURVEY PLAT OR IMPROVEMENT SURVEY PLAT AS DEFINED BY C.R.S. 38-51-102 AND CANNOT BE RELIED UPON TO DETERMINE OWNERSHIP.

## WELL PAD - ADAMSON 14N-28HZ

ADAMSON 13N-28HZ  
SPACING UNIT EXHIBIT  
2591' FSL & 249' FWL NWSW (HEEL)  
LOCATED IN SECTION 21  
2380' FSL & 265' FWL NWSW (BOTTOM)  
LOCATED IN SECTION 28  
T2N, R65W, 6TH P.M.  
WELD COUNTY, COLORADO

**Kerr-McGee Oil &  
Gas Onshore L.P.**  
1099 18th Street  
Denver, Colorado 80202



## CONSULTING, LLC

**SHERIDAN OFFICE**  
1095 Saberton Avenue  
Sheridan, Wyoming 82801  
Phone 307-674-0609

**LOVELAND OFFICE**  
1635 Foxtrail Drive, Suite 204  
Loveland, Colorado 80538  
Phone 970-776-4331

DRAFTED BY:	LMO	CHECKED BY:	BJR	SHEET NO:
DATE DRAFTED:	2/24/15	DATE SURVEYED:	12/5/14	2
REVISED:		FILE NAME:	14-107	2 OF 2