



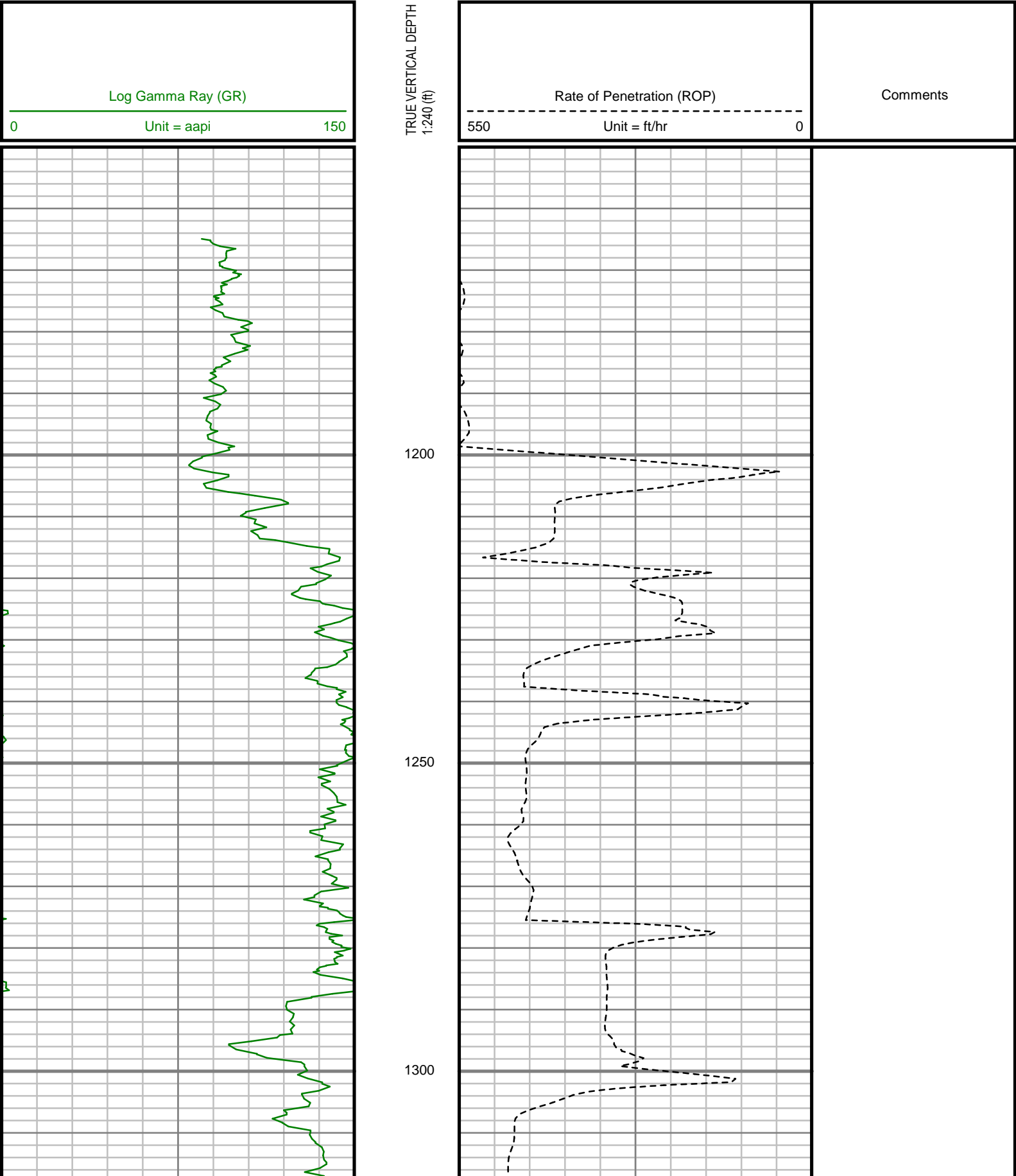
GAMMA RAY

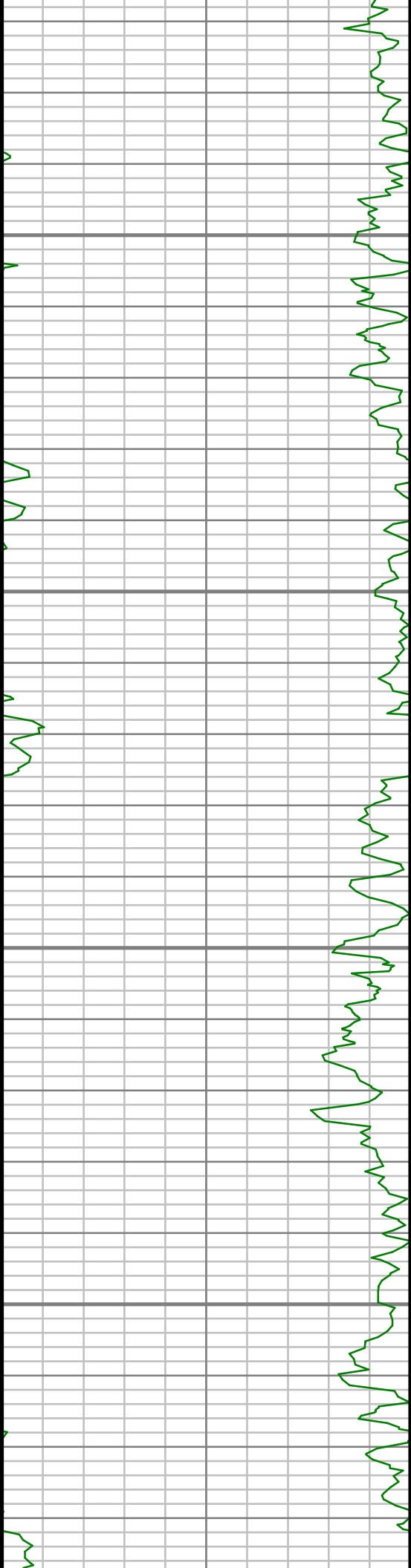
5" = 100' FEET TWD

COMPANY : ENCANA OIL AND GAS (U.S.A.) INC									
WELL : RUHL 1A-32H-B264									
FIELD : WATTENBERG									
COUNTY : WELD									
STATE : COLORADO									
COUNTRY : U.S.A.									
UWI : 05-123-40281									
COMPANY : ENCANA OIL AND GAS (U.S.A.) INC									
WELL : RUHL 1A-32H-B264									
FIELD : WATTENBERG									
COUNTY : WELD									
STATE : COLORADO									
COUNTRY : U.S.A.									
UWI : 05-123-40281									
WELL LOCATION					OTHER SERVICES				
LAT:40°6'5.180"N LONG:104°34'25.468"W					DIRECTIONAL ROP				
N:1281151.85 ft E:3259104.09 ft									
SEC:32 TWP:2N RANGE:64W									
DEPTH REF. : RKB					RKB to Ground Level G.L. to MEAN SEA LEVEL				
REF. HEIGHT : 25.000 ft									
GROUND LEVEL : 4979.000 ft									
BOREHOLE RECORD					DEVIATION RECORD				
HOLE SIZE in	FROM ft	TO ft	INCLINATION deg	FROM ft	TO ft				
12.25	0	1230	0 - 11	0	784				
8.75	1230	7515	11 - 0	784	3092				
6.125	7515	11533	0 - 81	3092	7425				
			81 - 92	7425	11533				
CASING RECORD									
CASING SIZE in	FROM ft	TO ft							
16	0	140							
9.625	0	1221							
7	0	7515							
			DRILLING CO. : H&P RLG: 278 LMD UNIT NO. : SPUD DATE: 12/08/2014 LMD START DATE: 01/30/2015 LMD END DATE: 02/04/2015						
			DISTRICT: CASPER DEPTH: 5000 ft DEPTH: 11533 ft TOTAL DEPTH: 11533 ft						

All interpretations are opinions based on inferences from electrical or other measurements and we cannot, and do not guarantee the accuracy or correctness of any interpretations, and we shall not, except in the case of gross or willful negligence on our part, be liable or responsible for any loss, costs, damages or expenses incurred or sustained by anyone resulting from any interpretation made by any of our officers, agents or employees. These interpretations are also subject to our general terms and conditions as set out in our current price schedule.

ENCANA OIL AND GAS (U.S.A.) INC
RUHL 1A-32H-B264
WATTENBERG
WELD COUNTY, COLORADO
05-123-40281



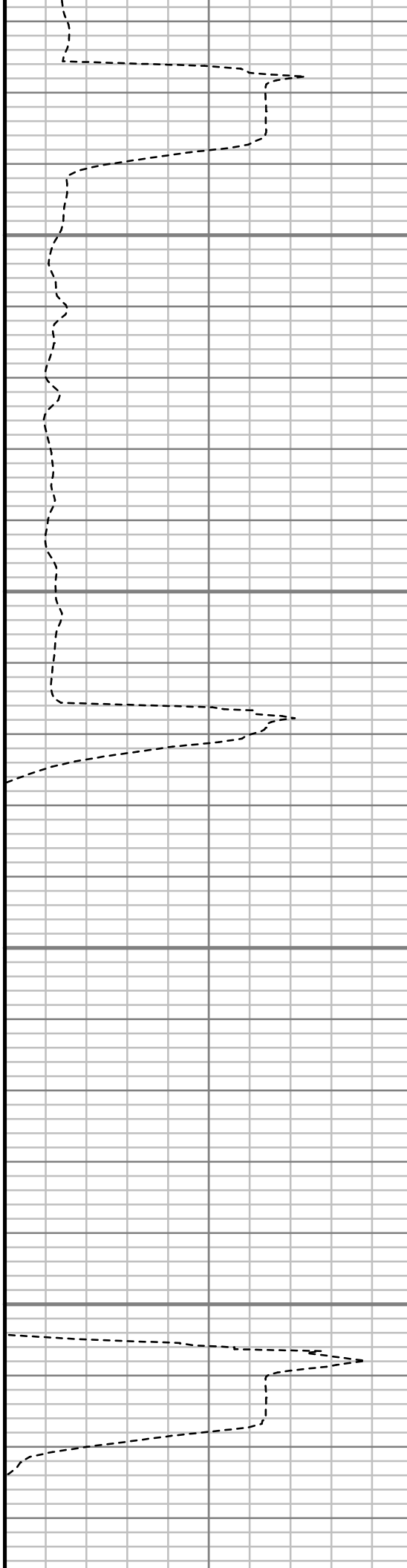


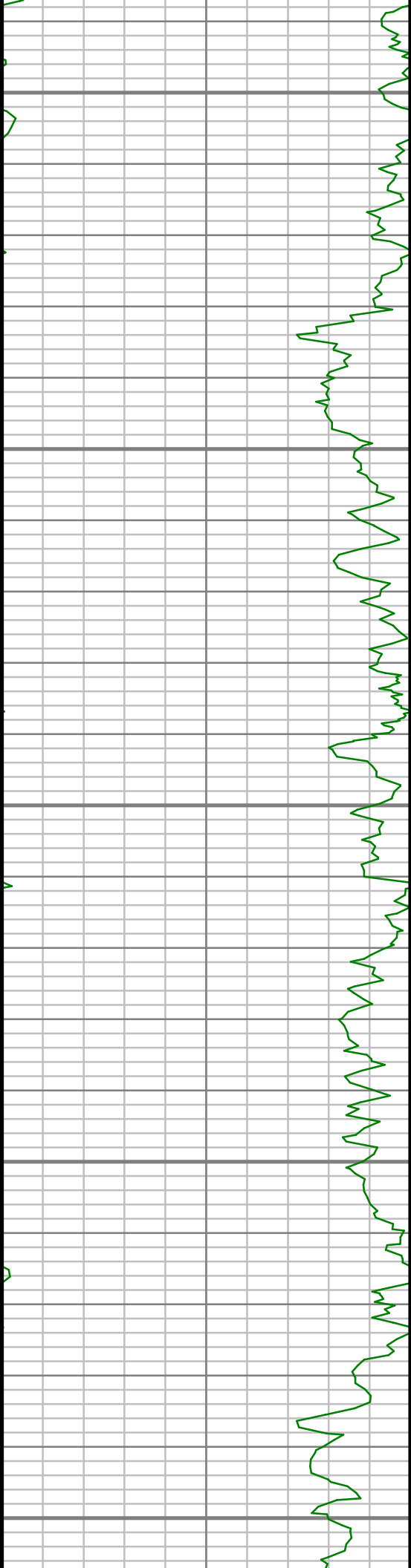
1350

1400

1450

1500





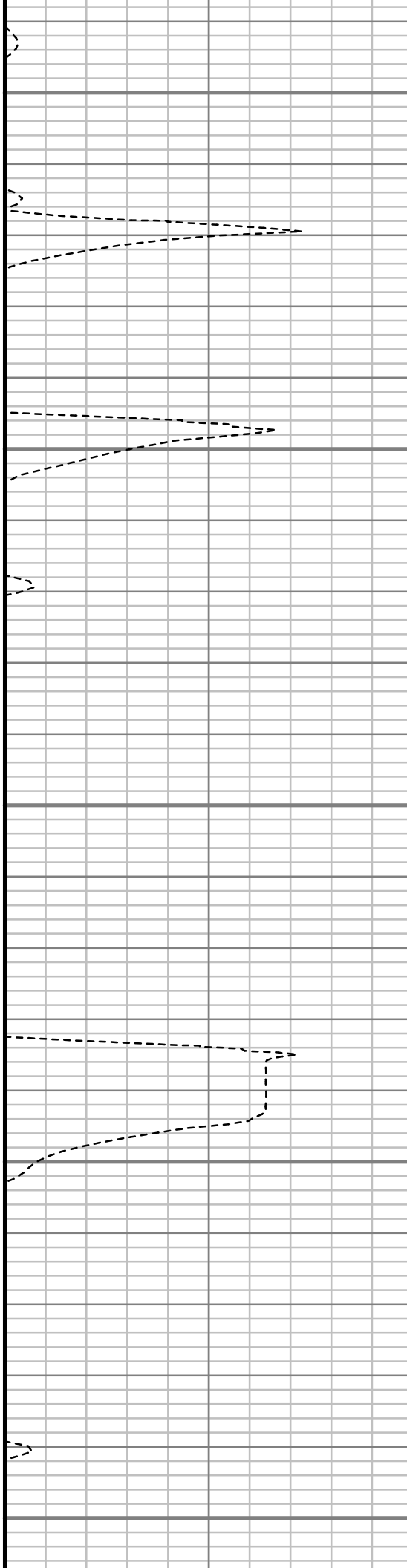
1550

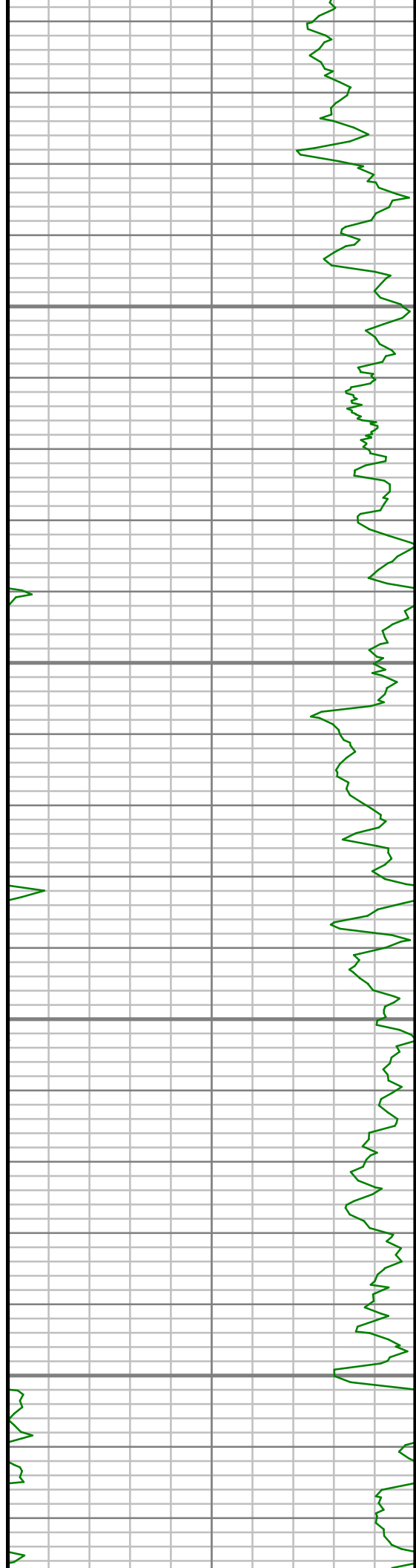
1600

1650

1700

1750



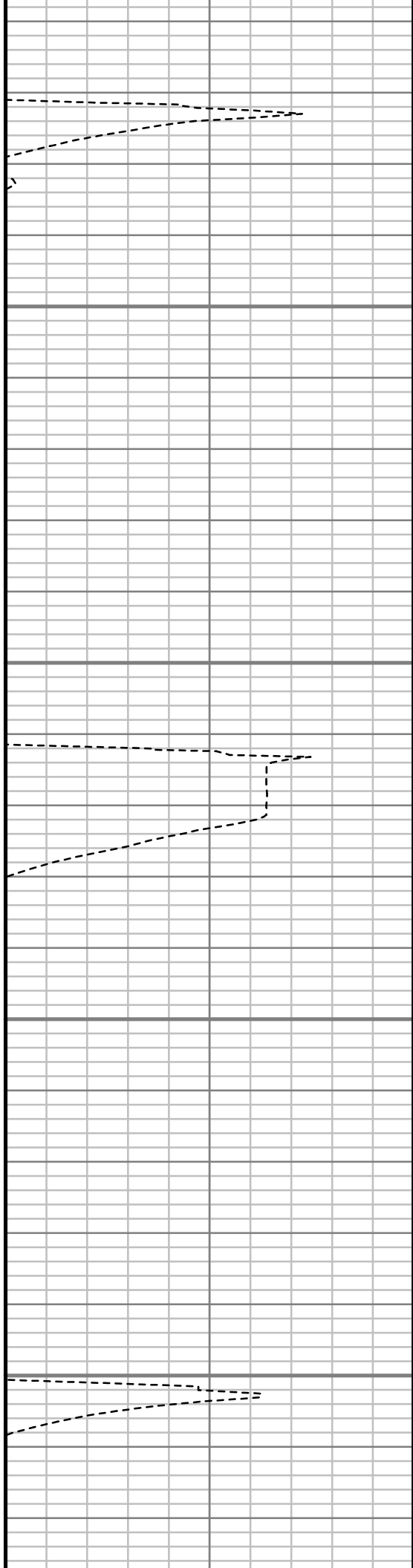


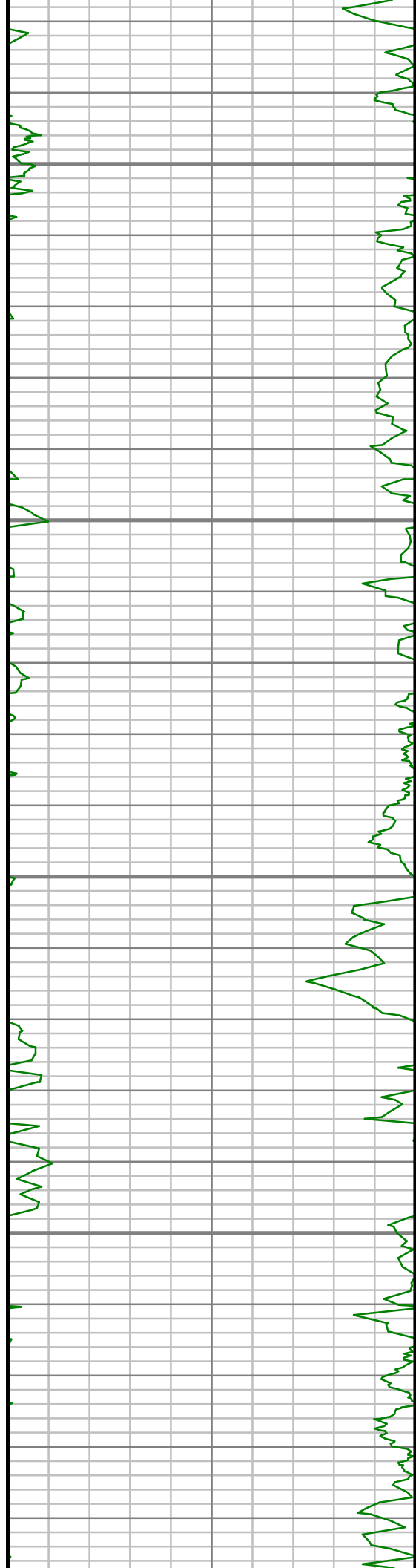
1800

1850

1900

1950



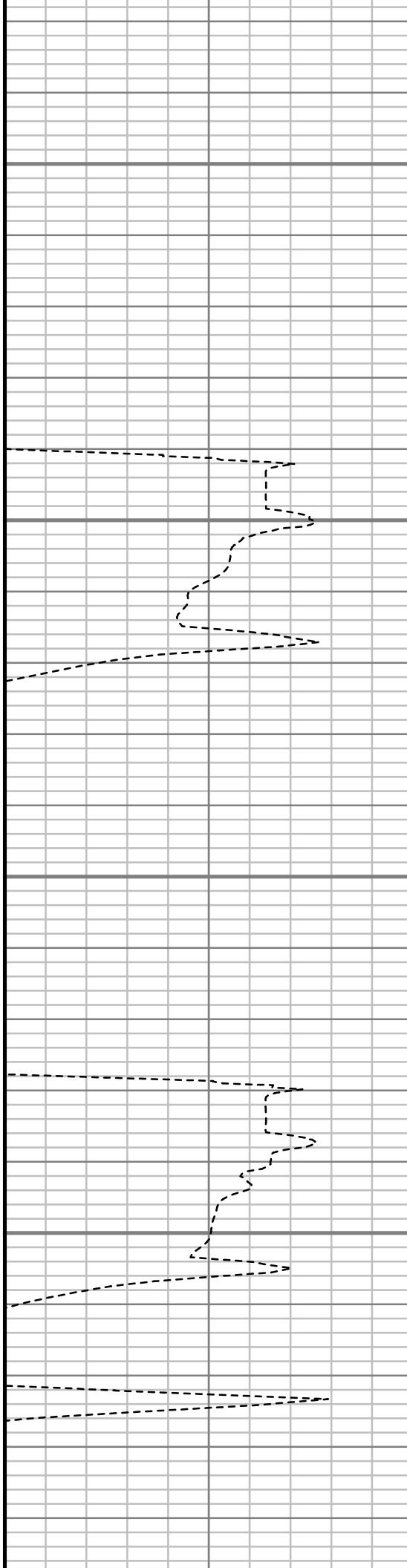


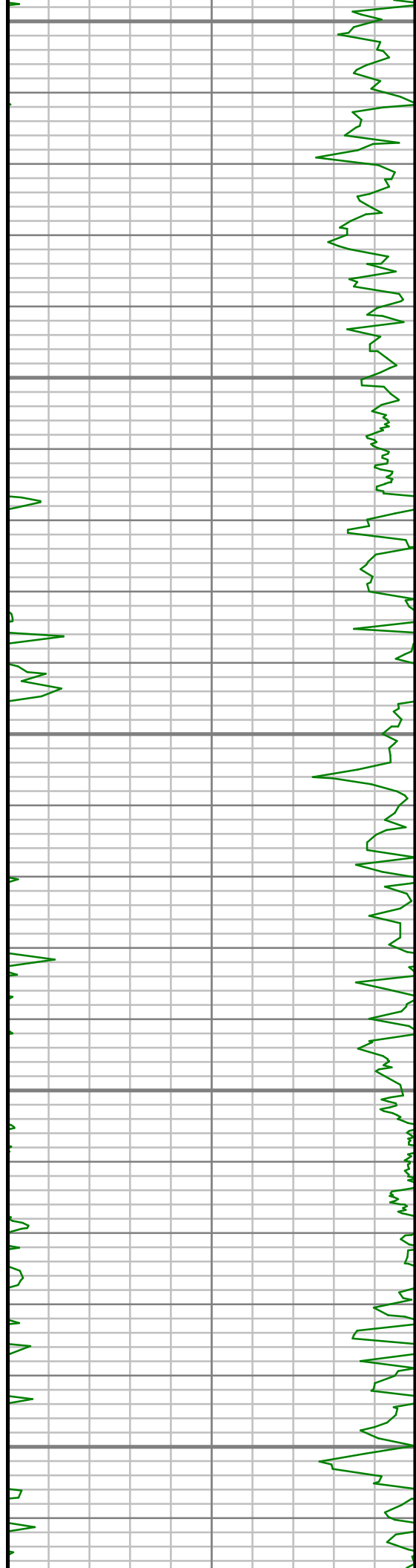
2000

2050

2100

2150





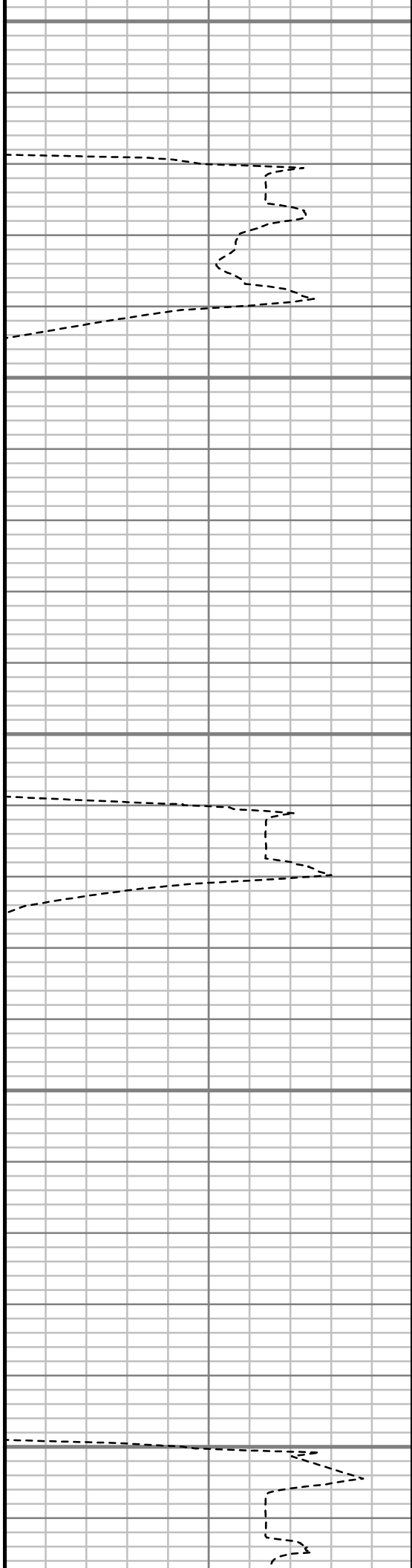
2200

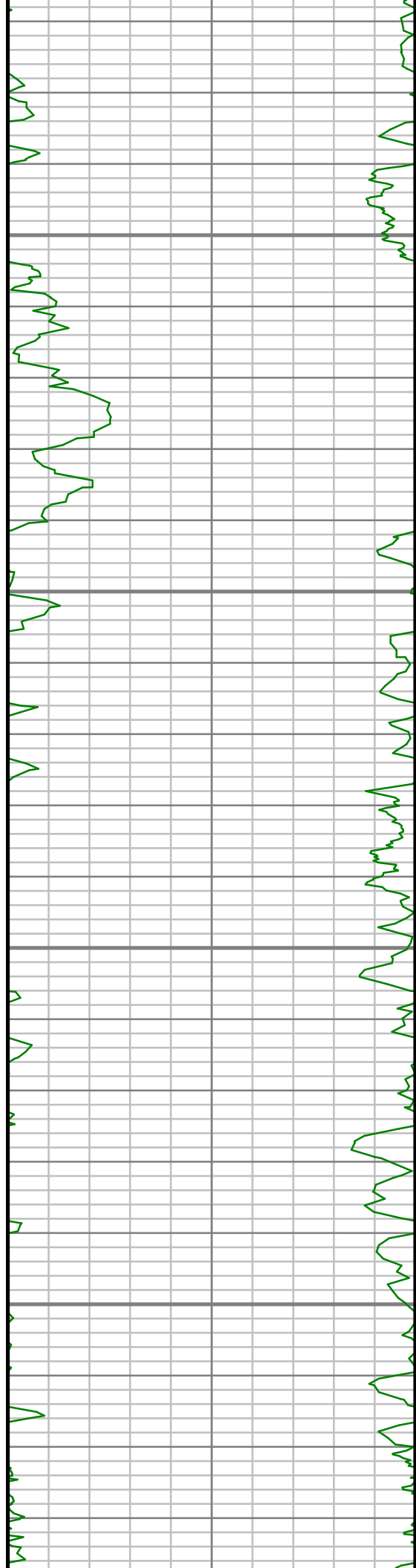
2250

2300

2350

2400



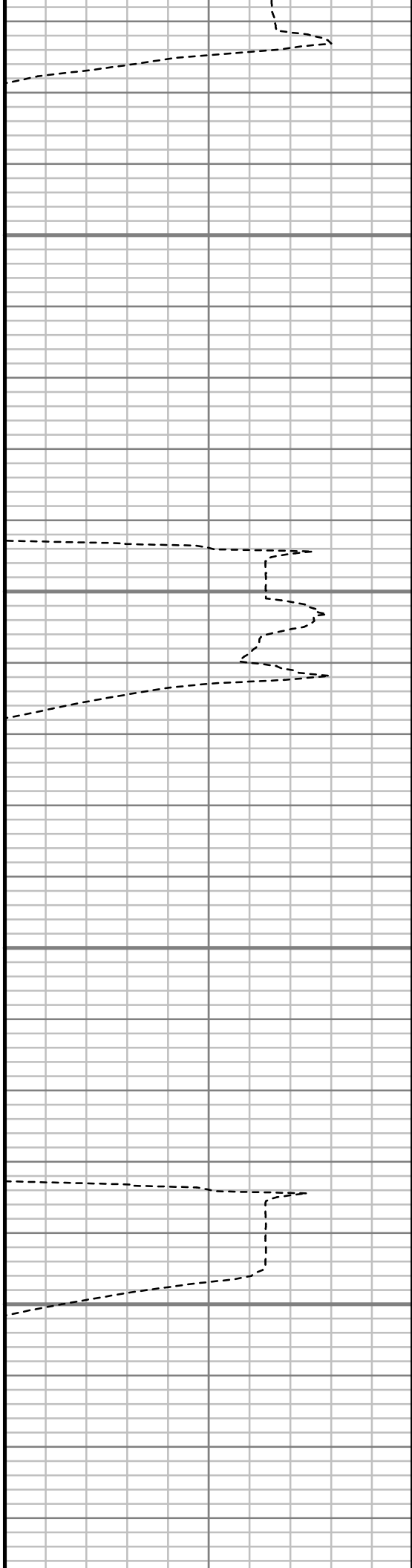


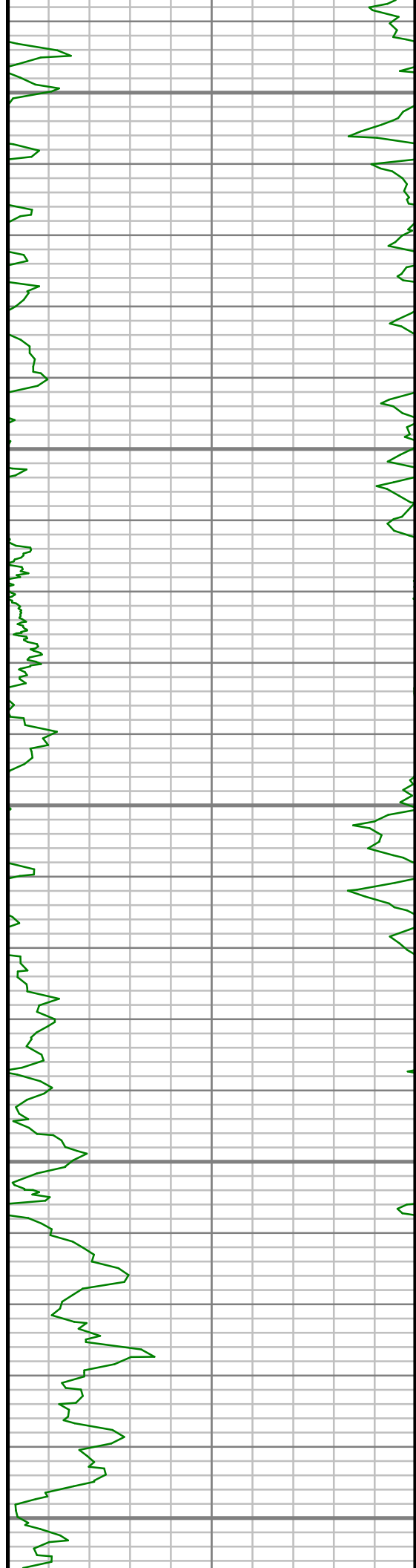
2450

2500

2550

2600





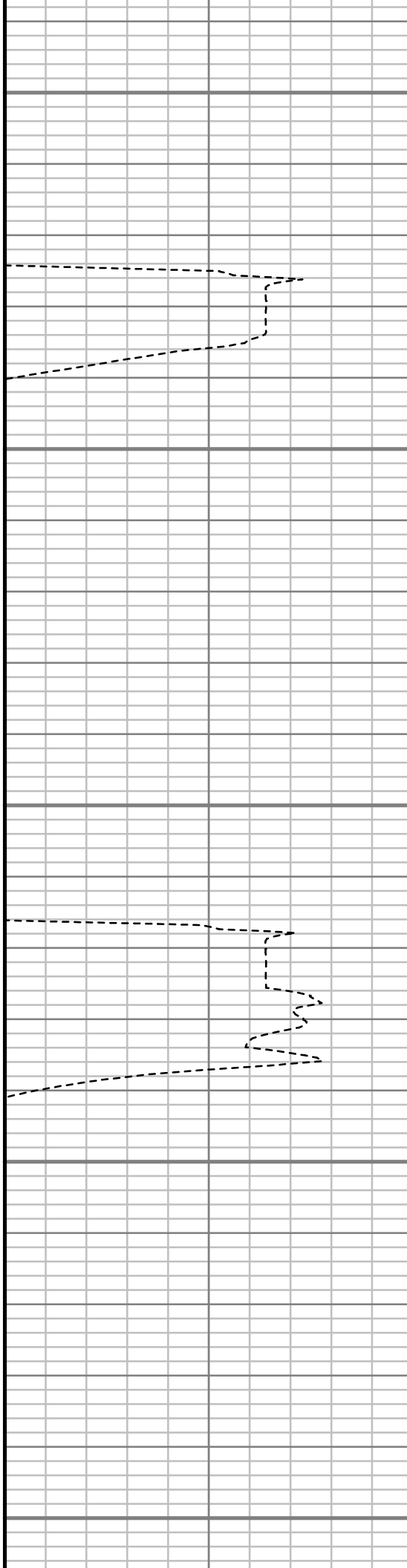
2650

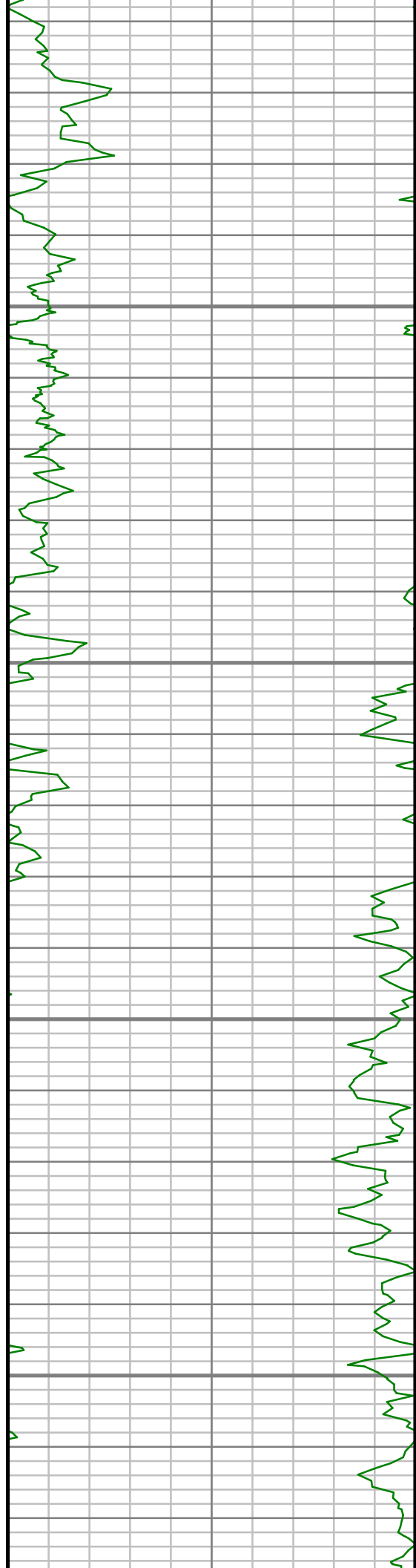
2700

2750

2800

2850



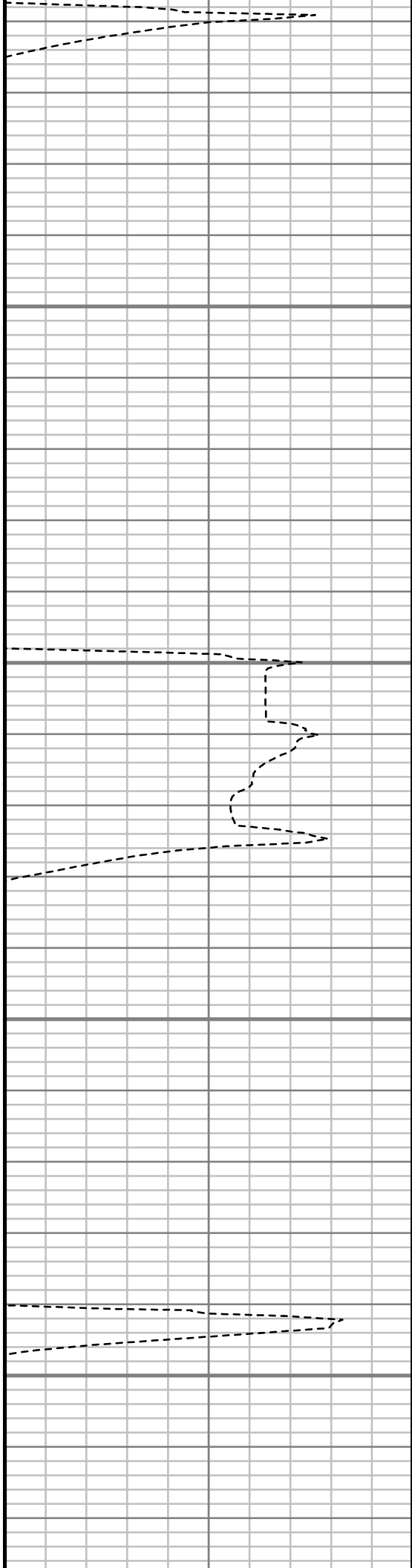


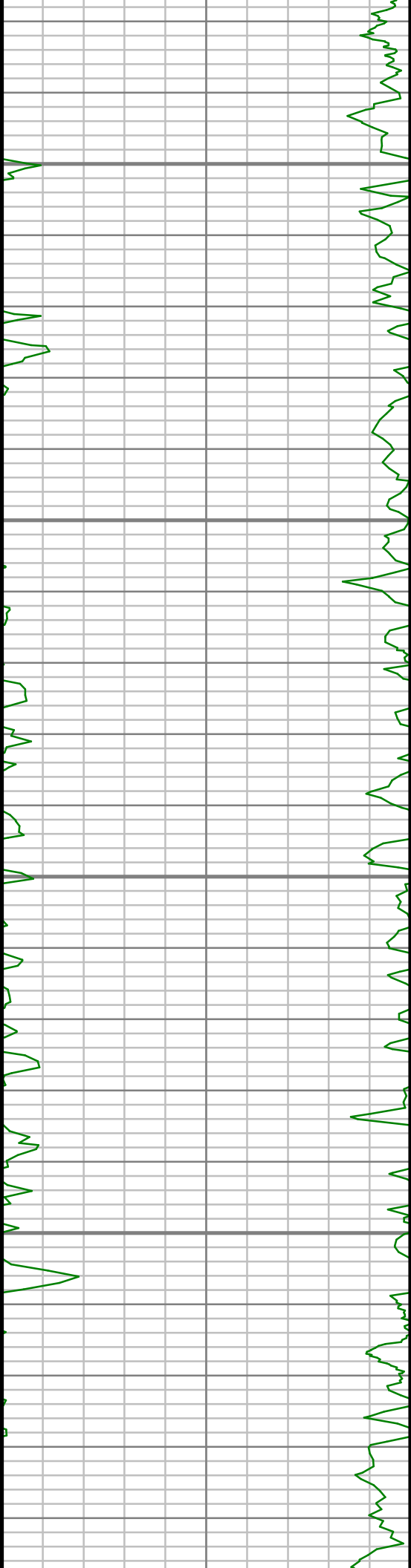
2900

2950

3000

3050



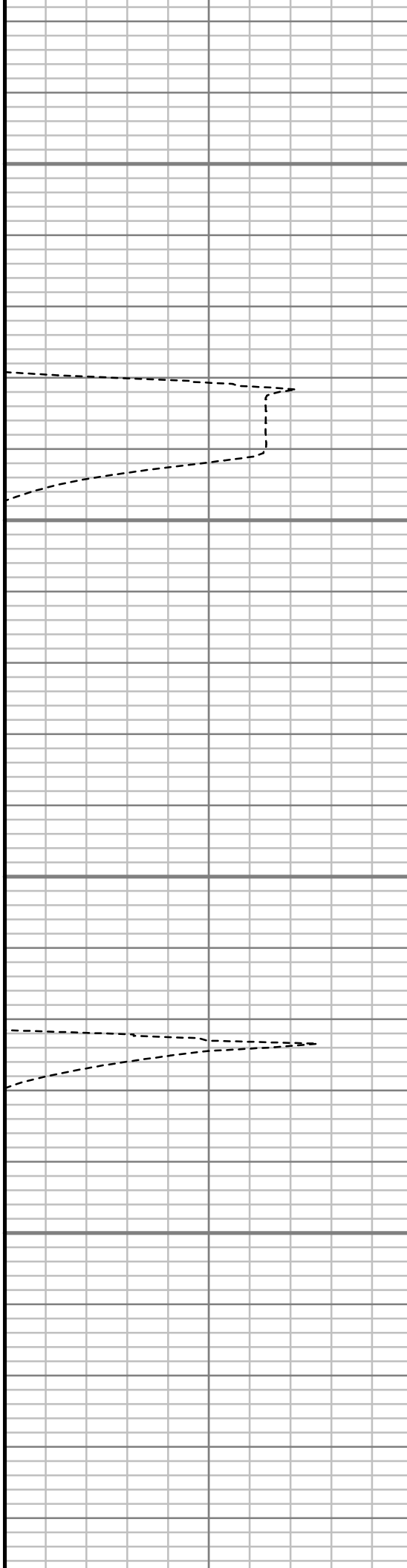


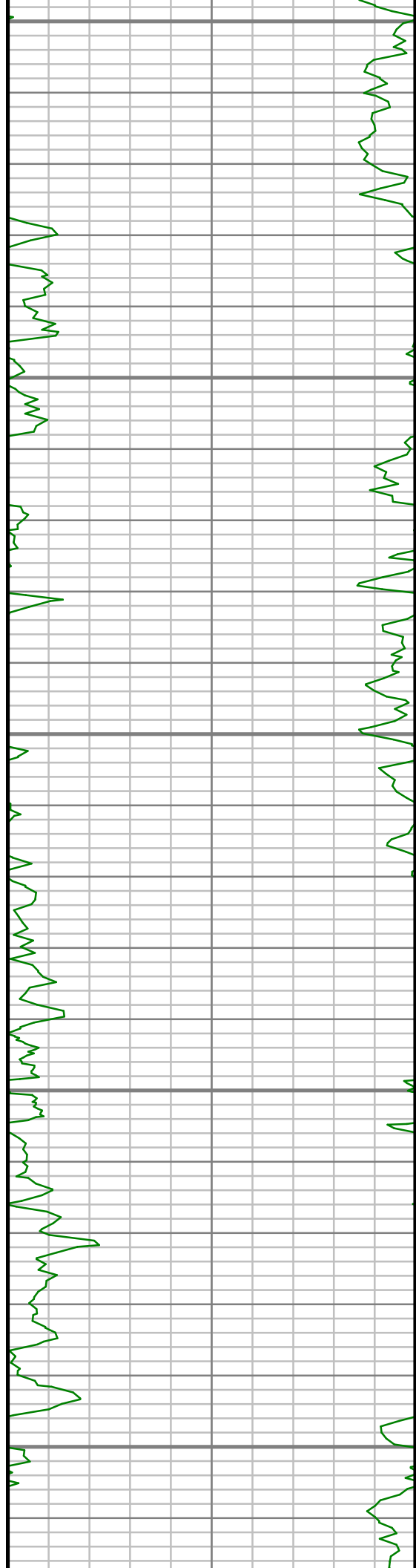
3100

3150

3200

3250





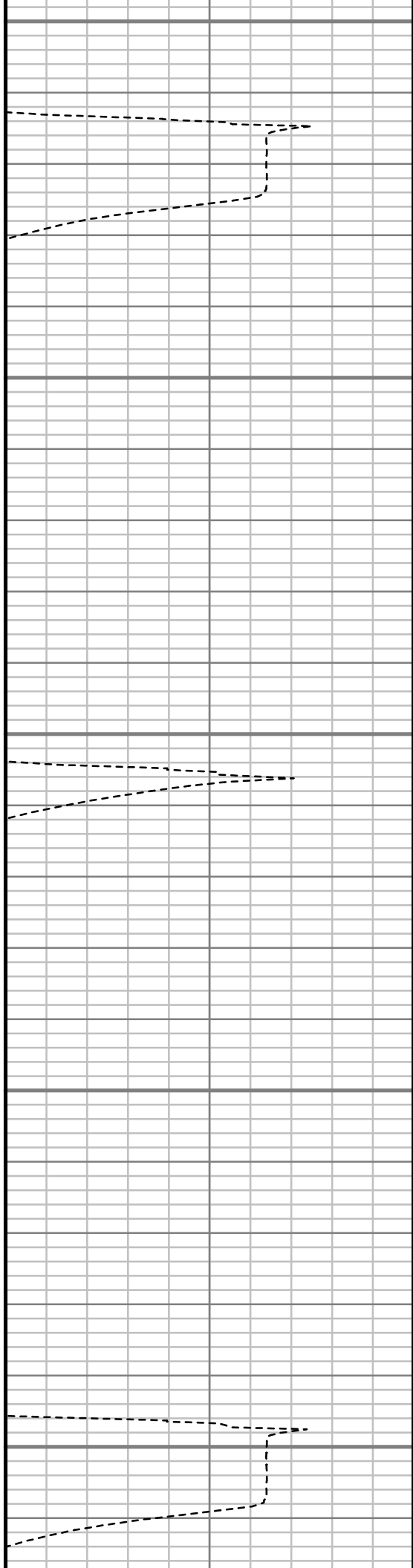
3300

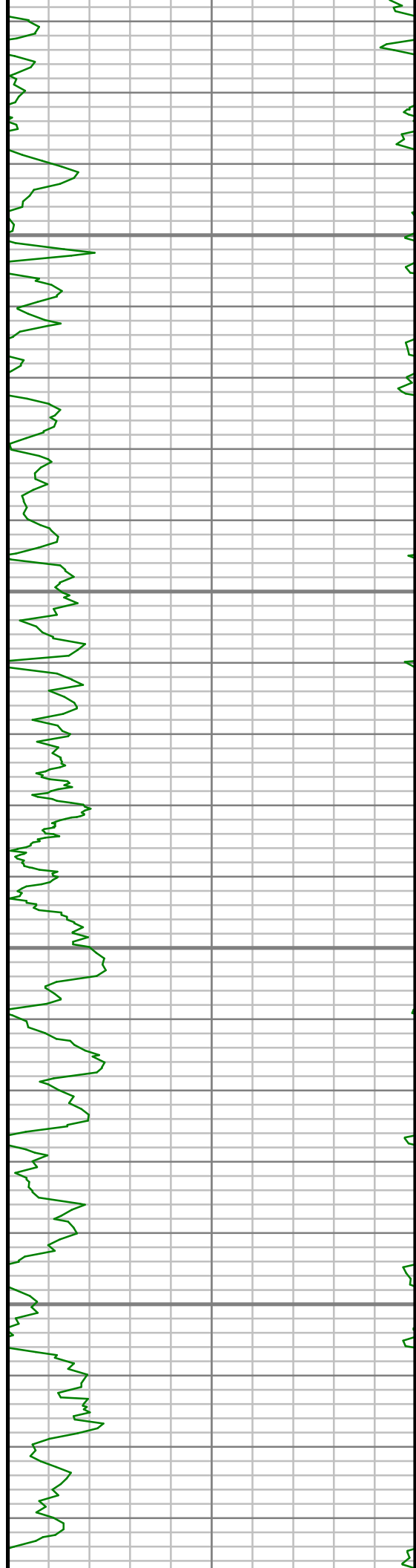
3350

3400

3450

3500



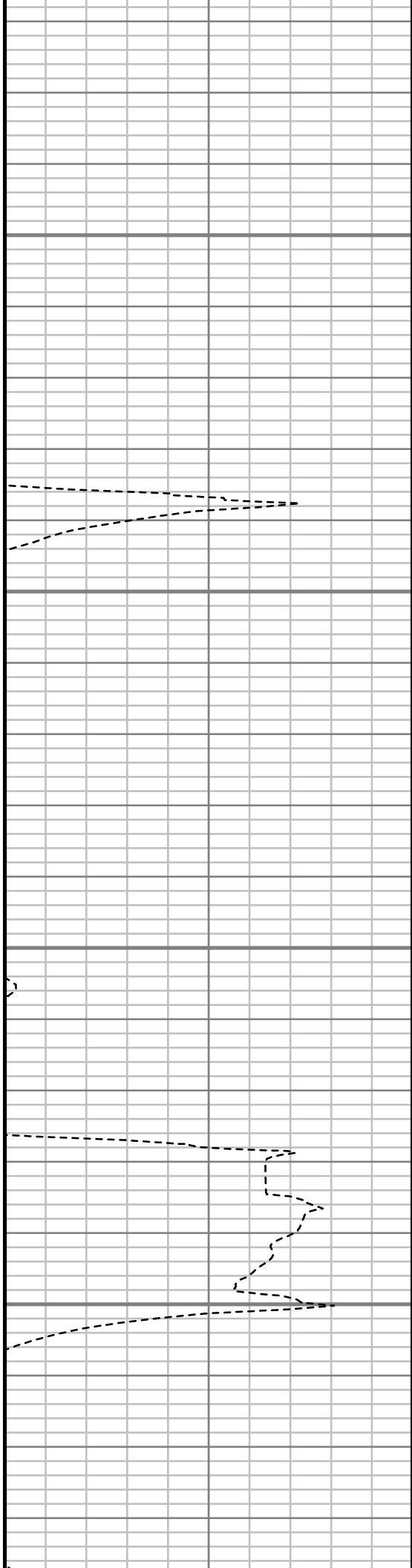


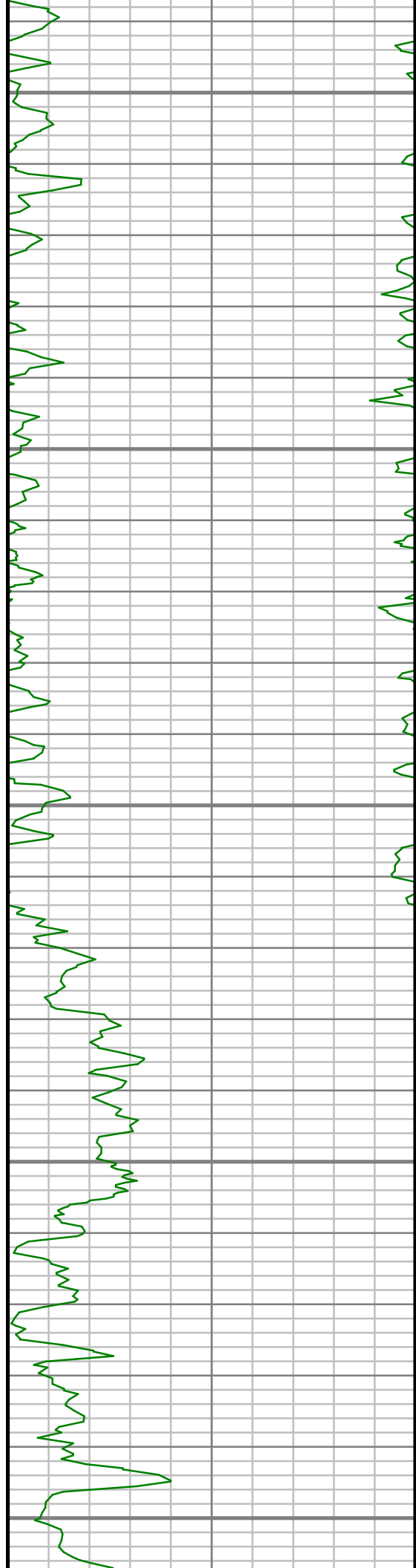
3550

3600

3650

3700





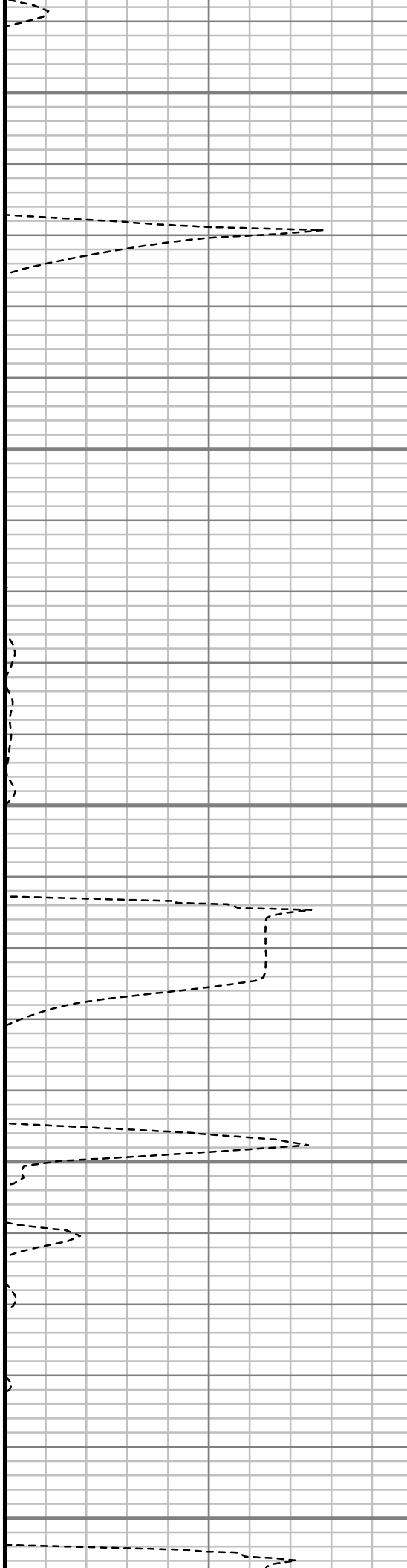
3750

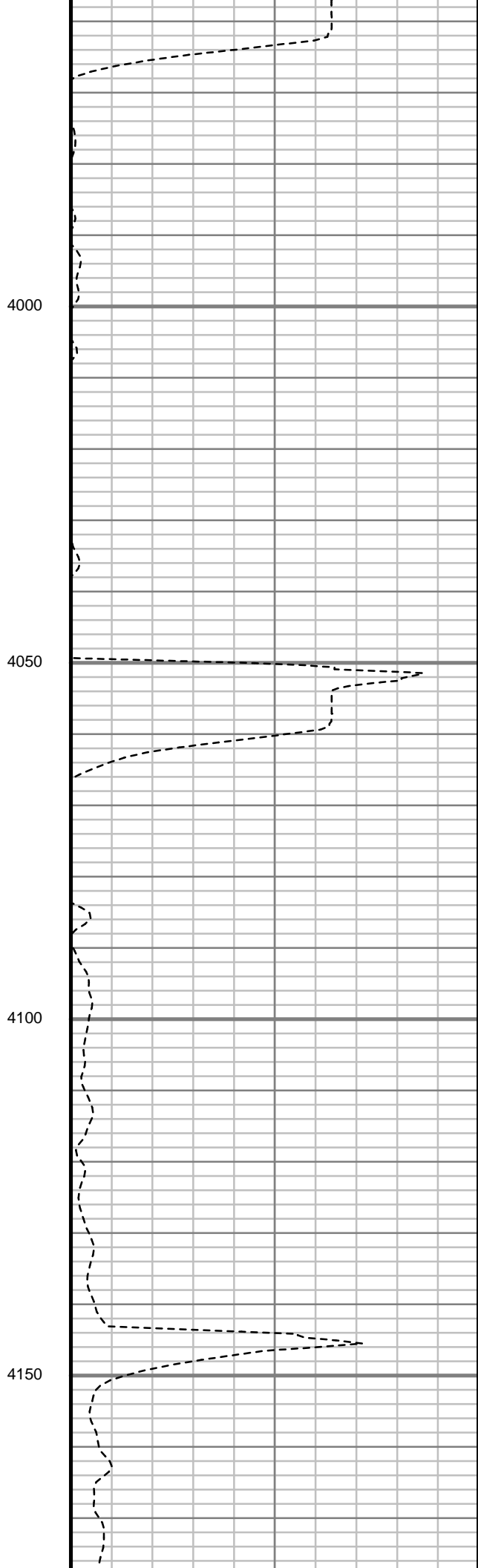
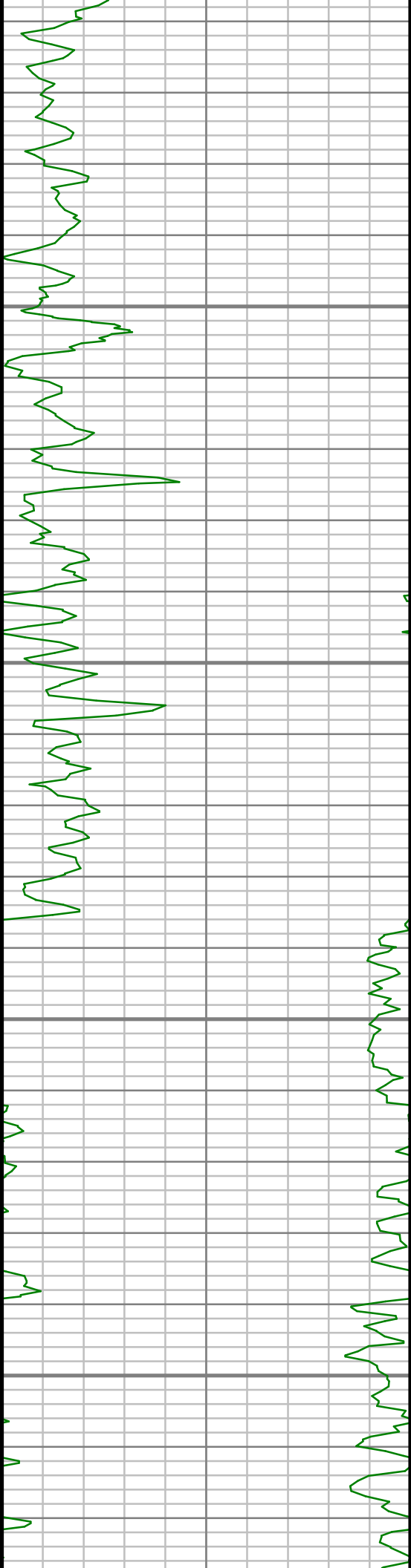
3800

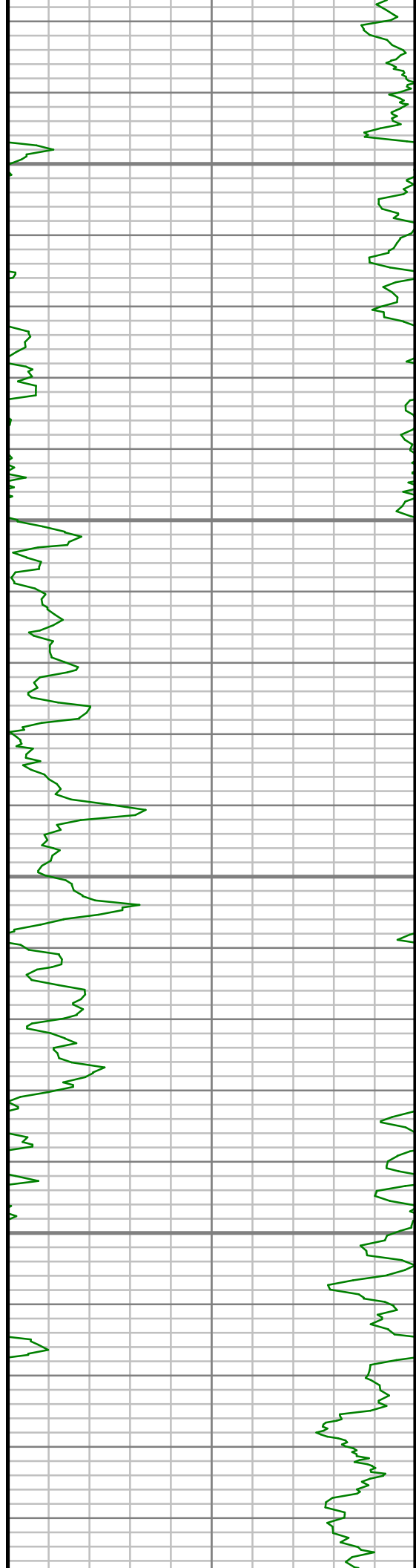
3850

3900

3950





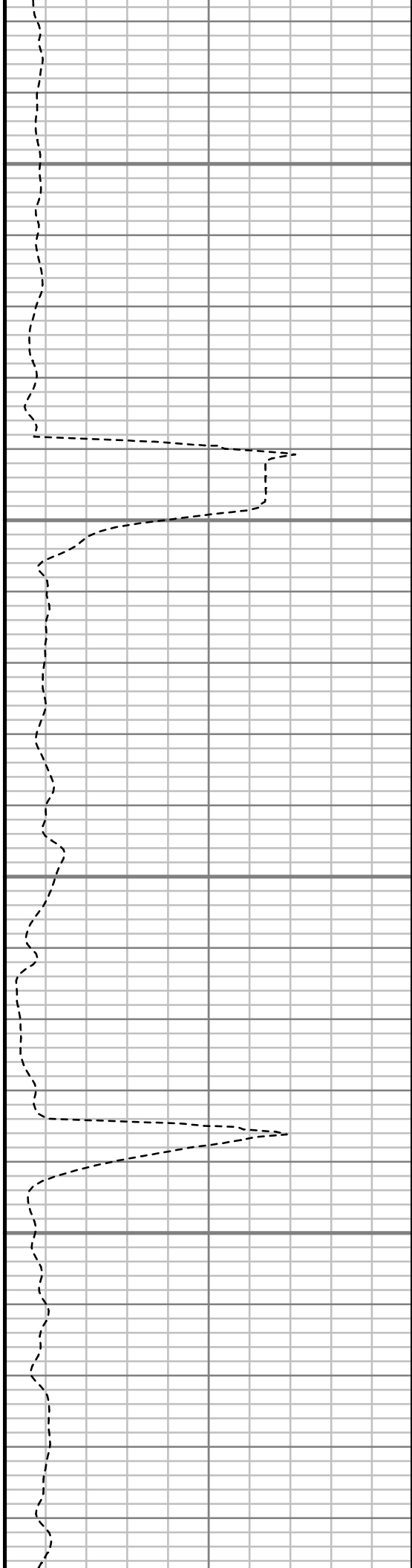


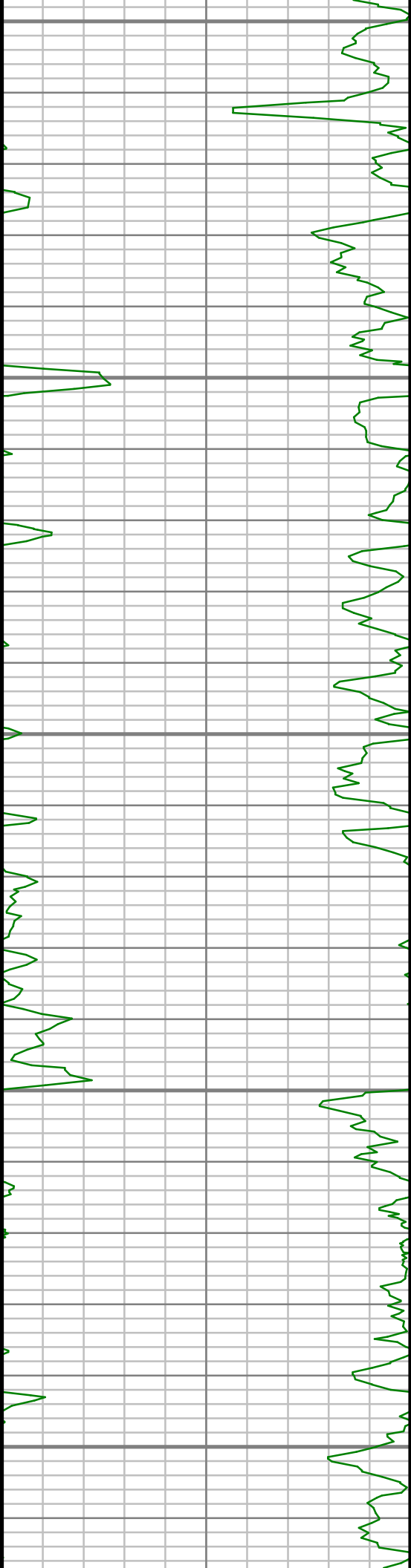
4200

4250

4300

4350





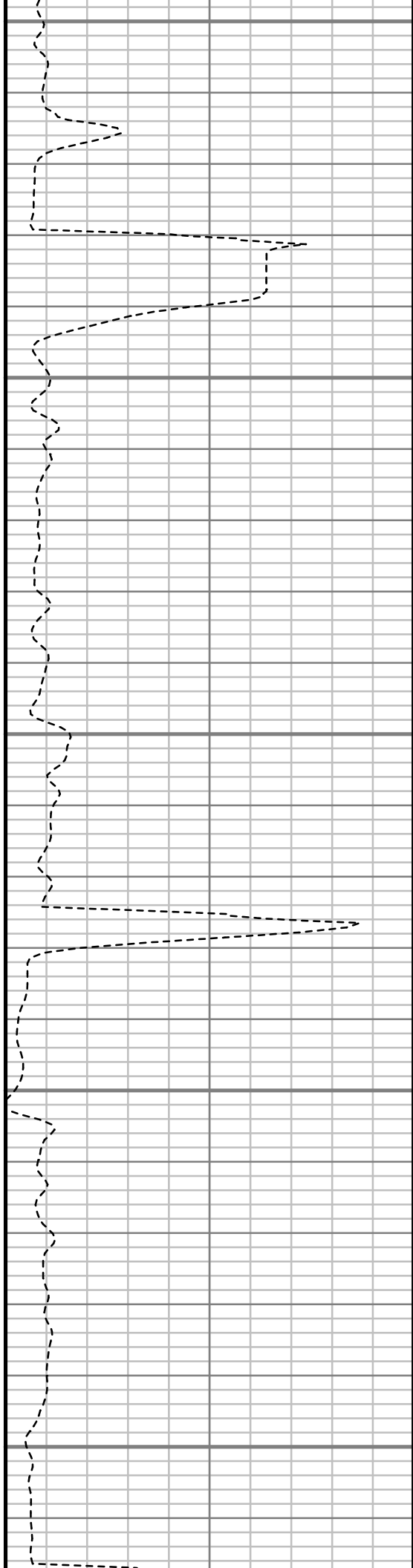
4400

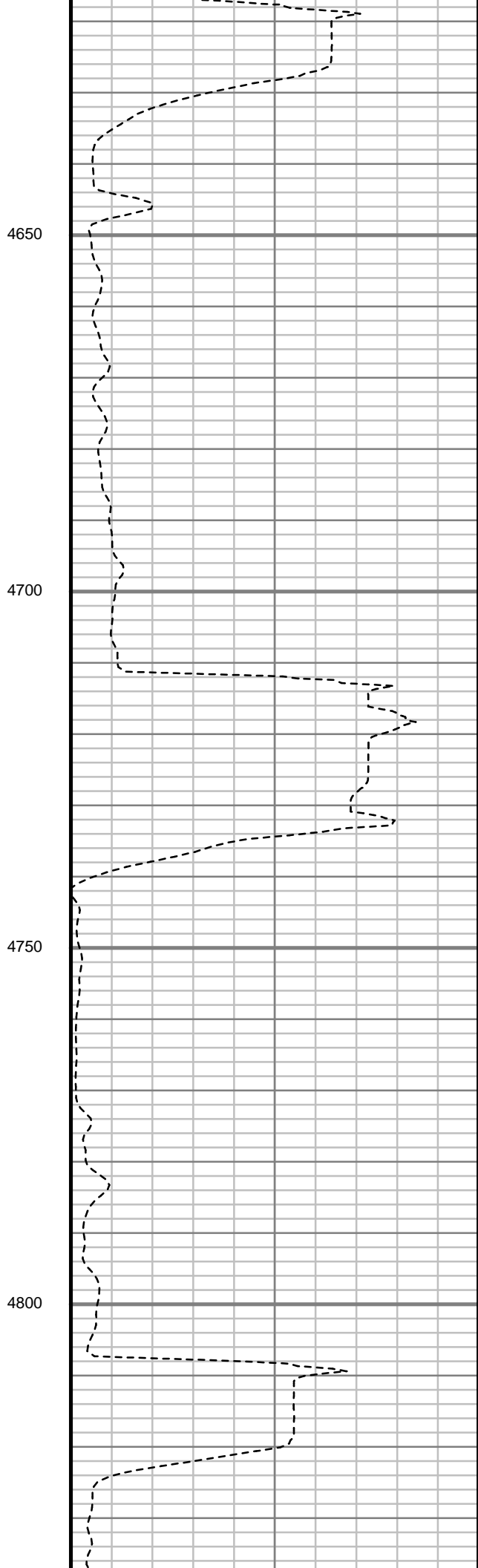
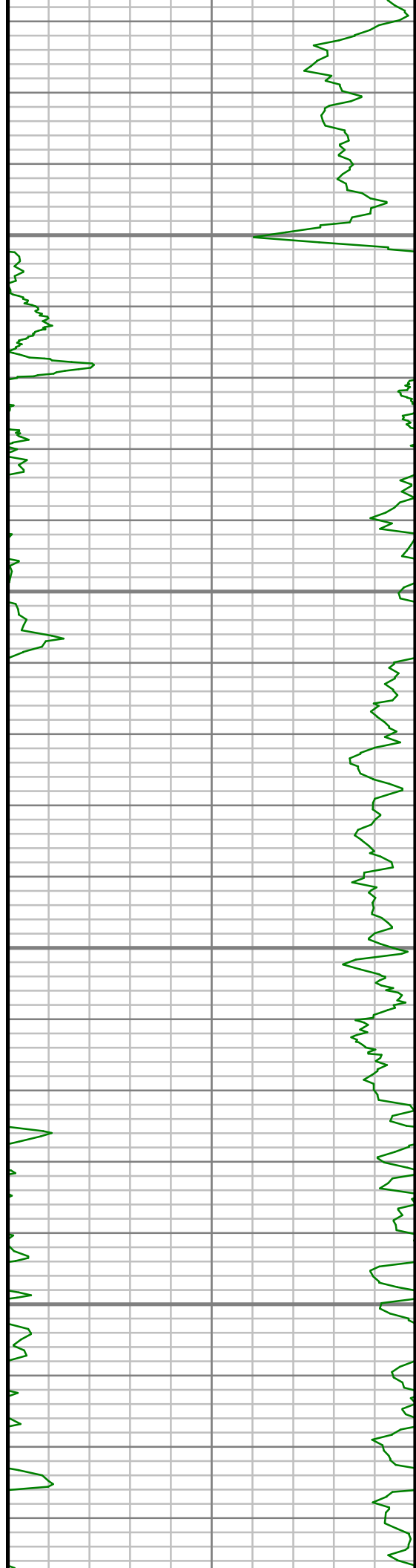
4450

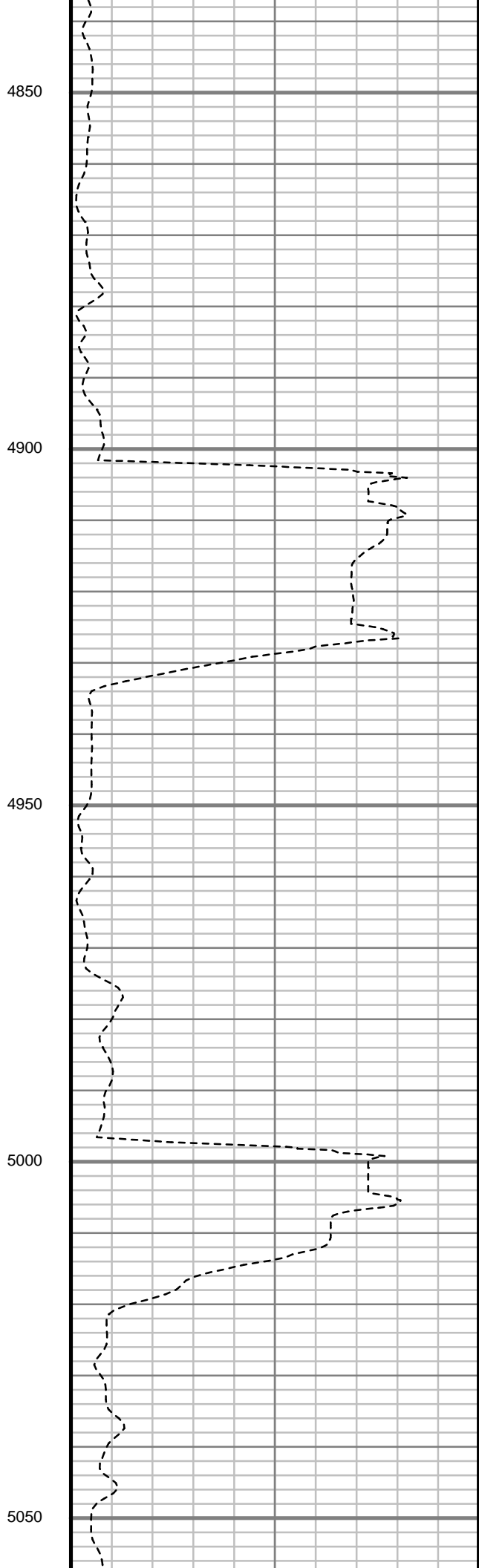
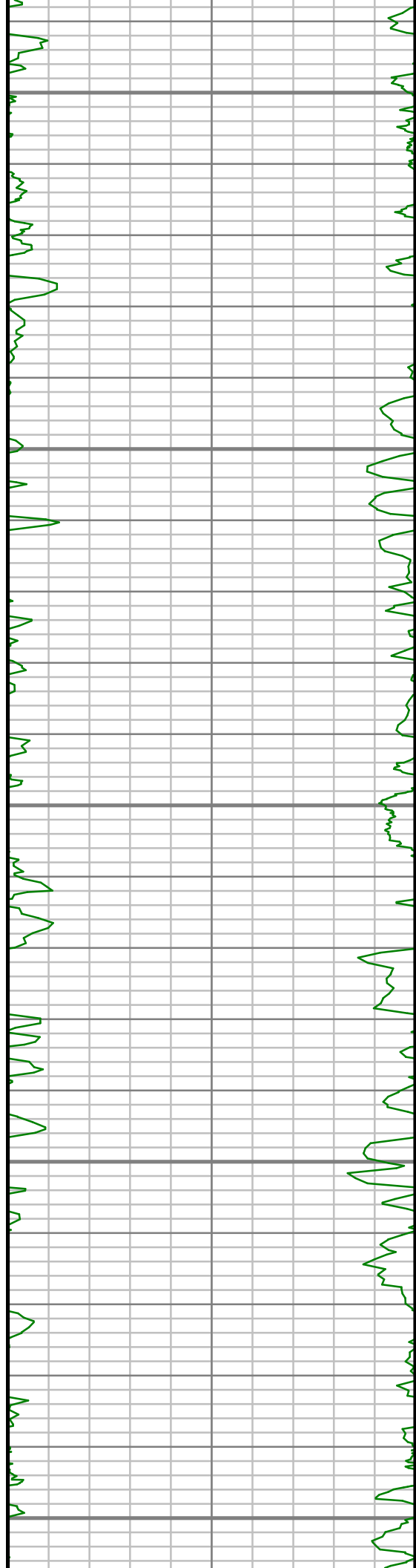
4500

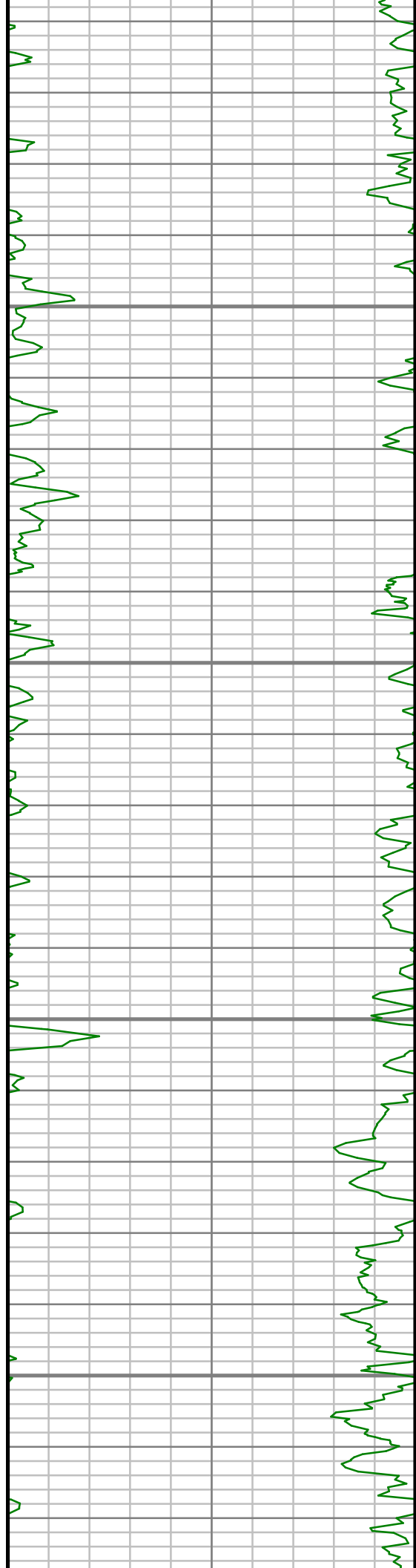
4550

4600







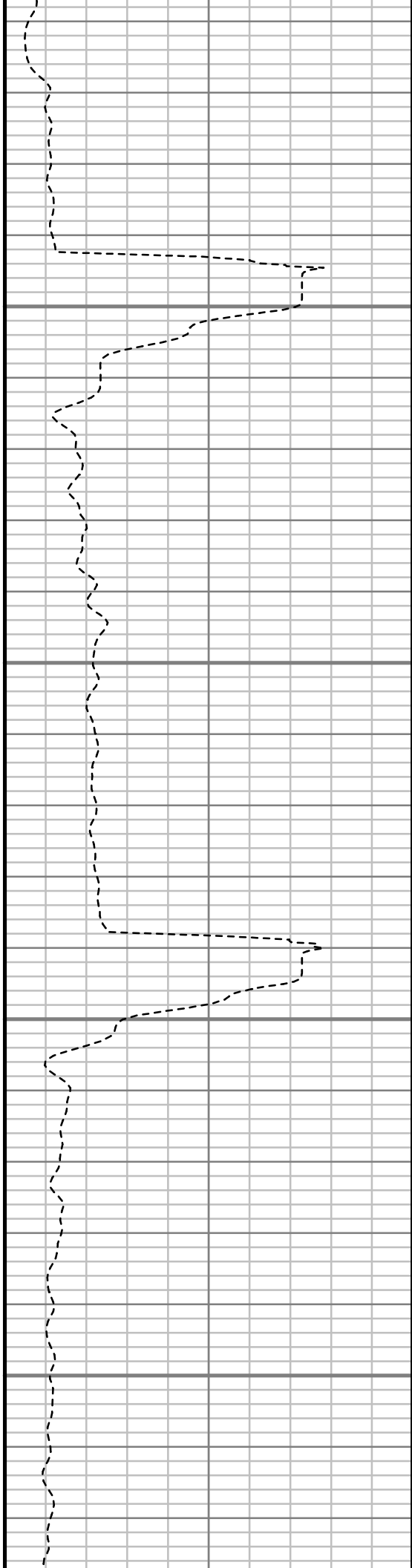


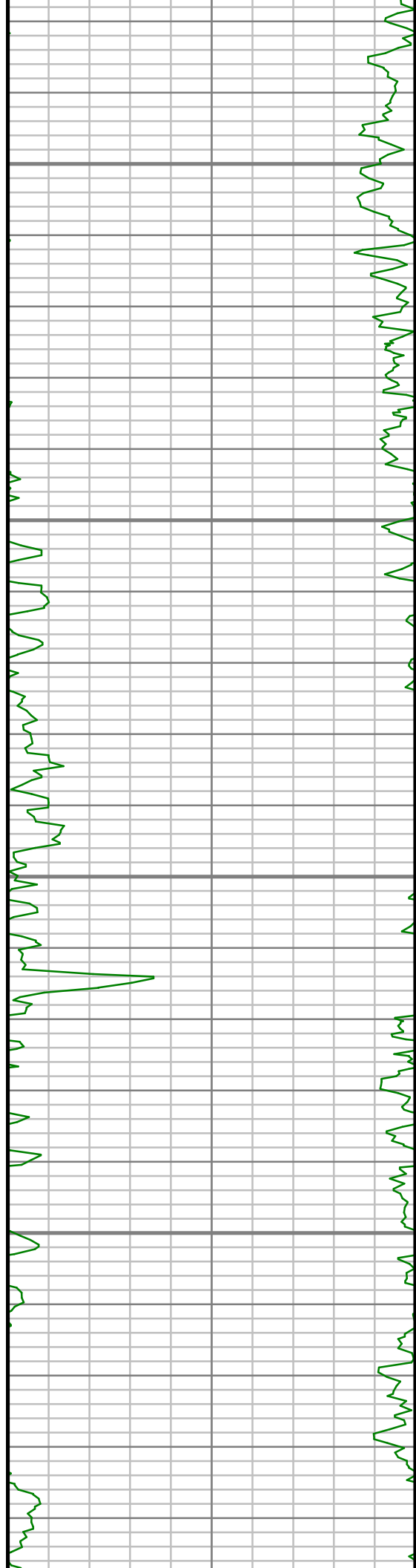
5100

5150

5200

5250



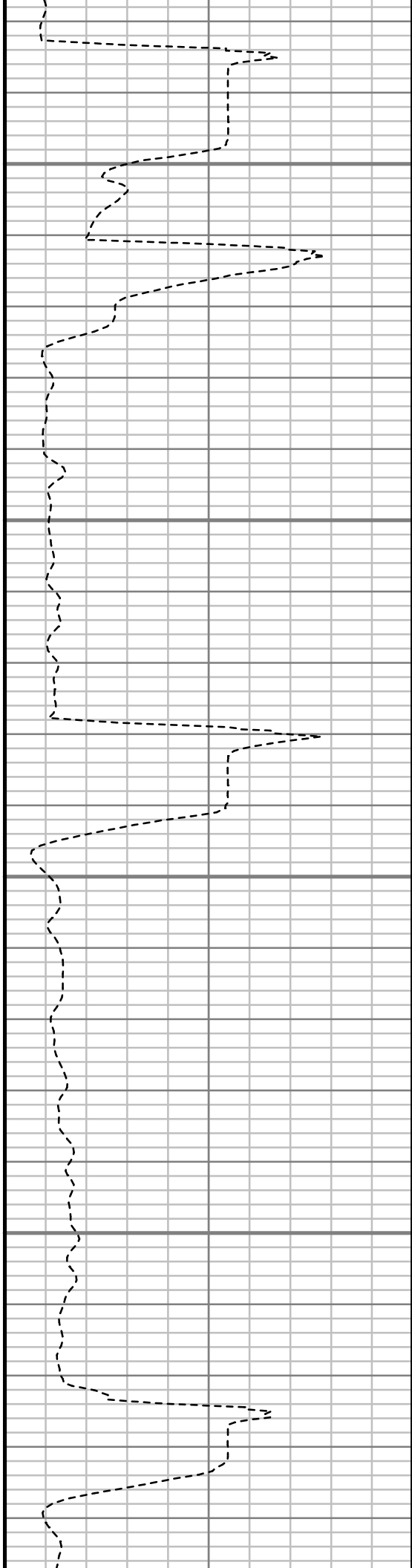


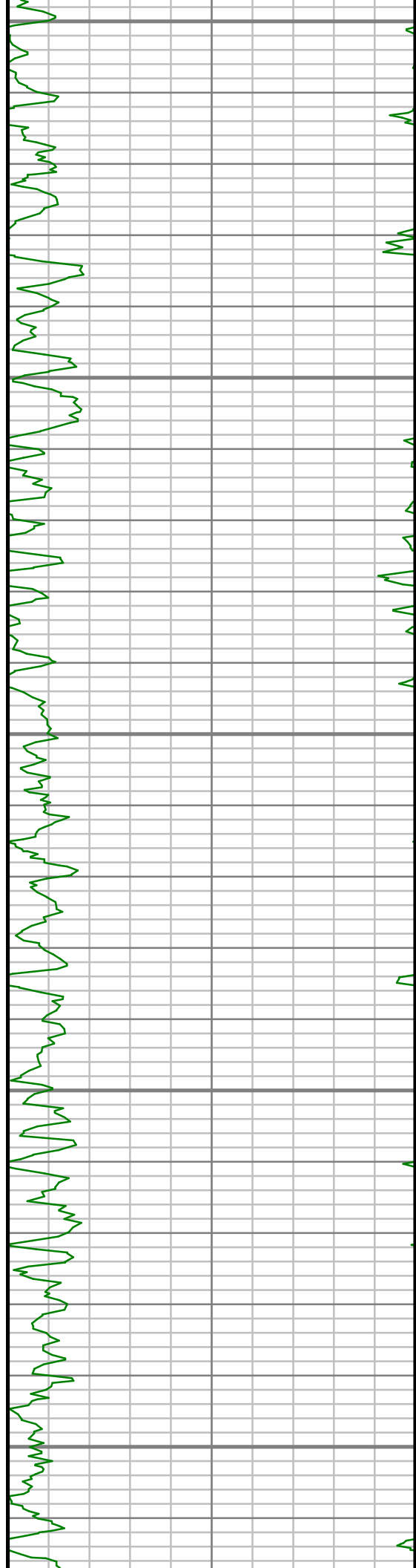
5300

5350

5400

5450





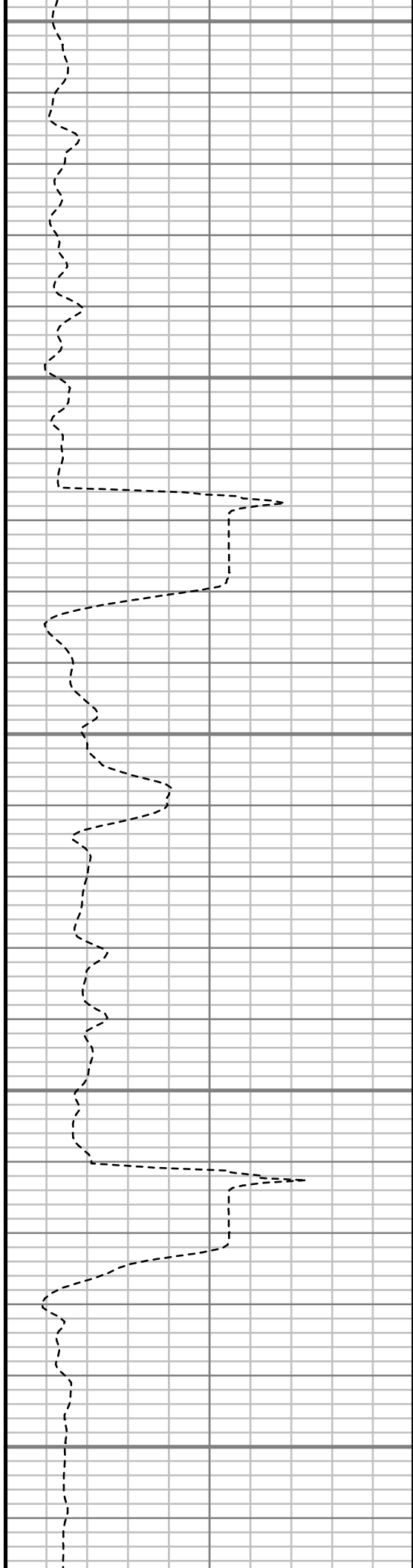
5500

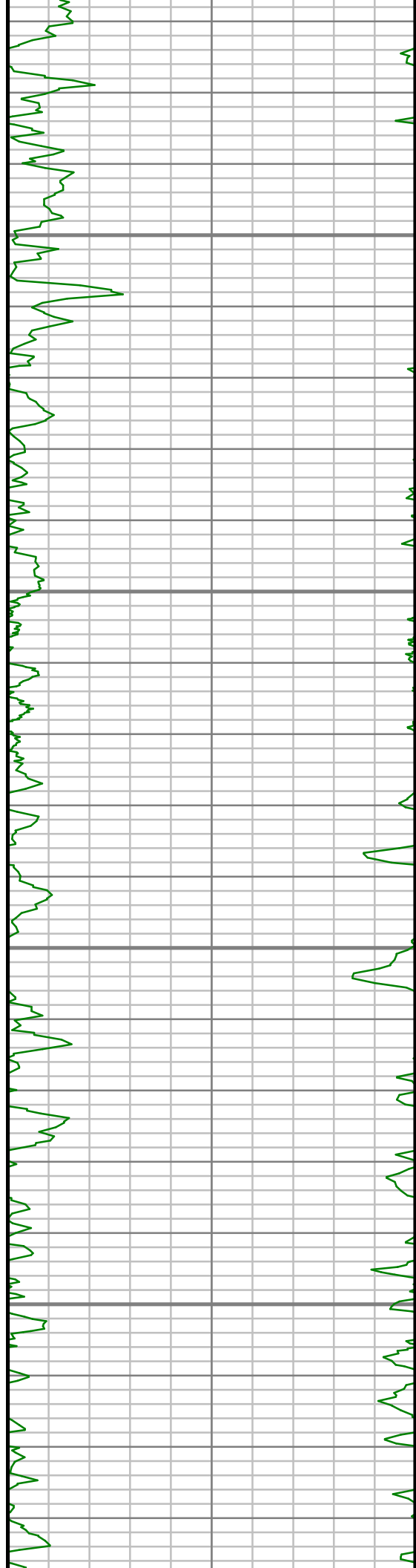
5550

5600

5650

5700



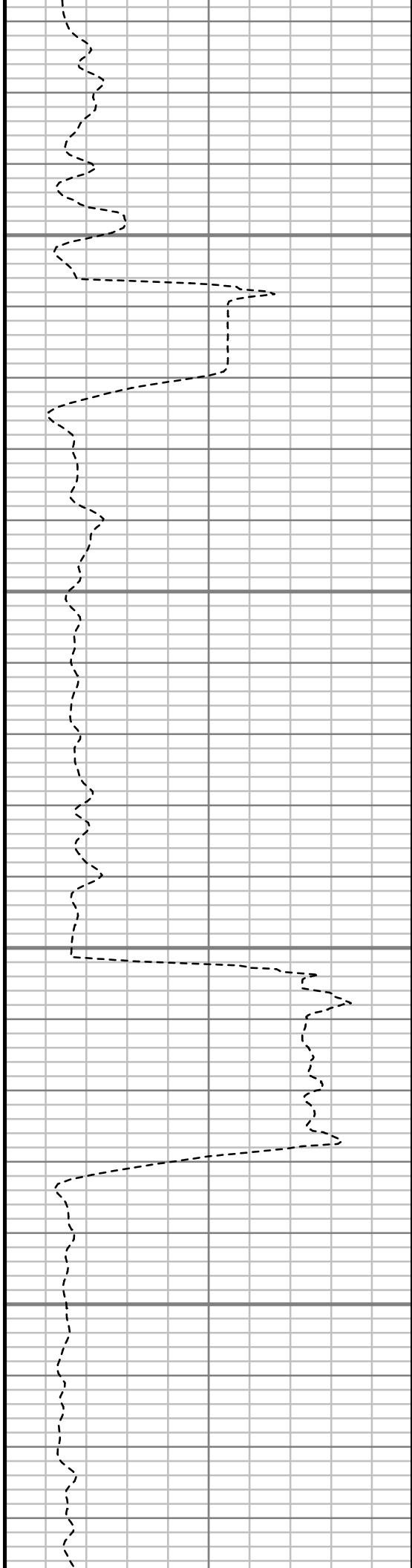


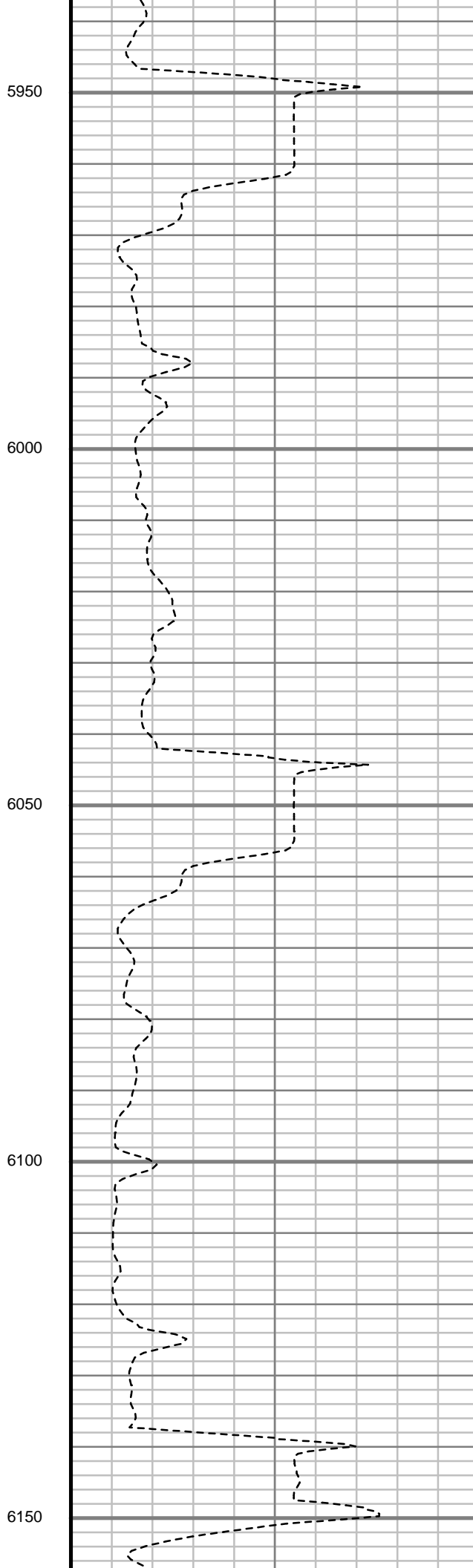
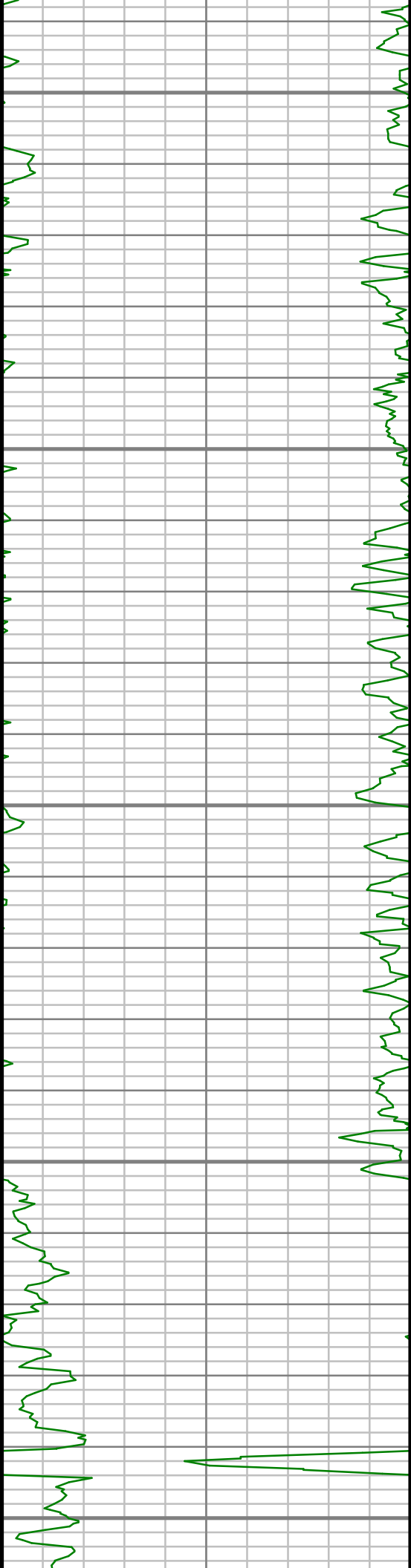
5750

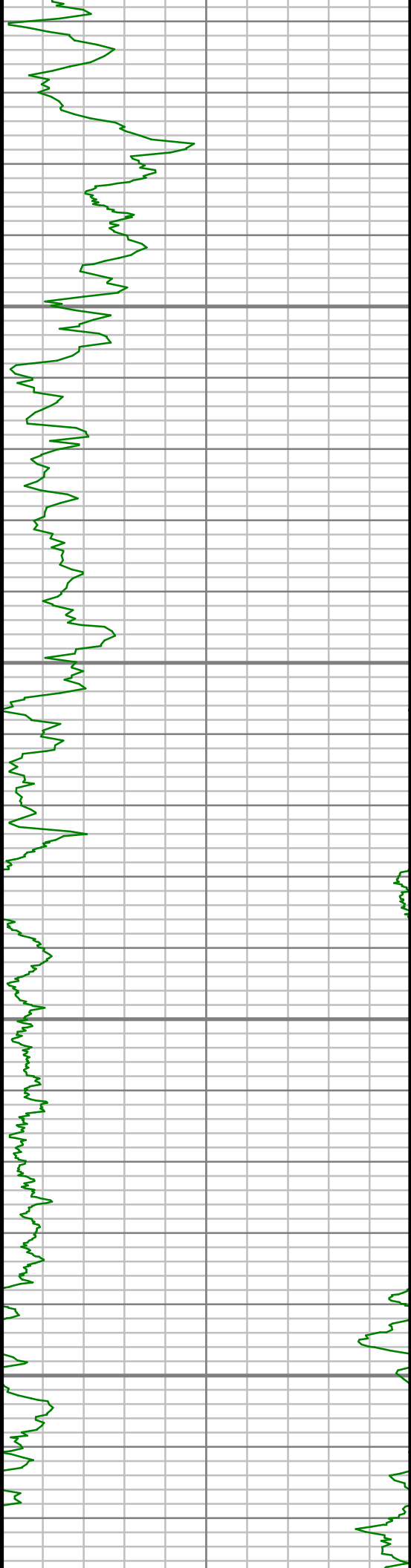
5800

5850

5900





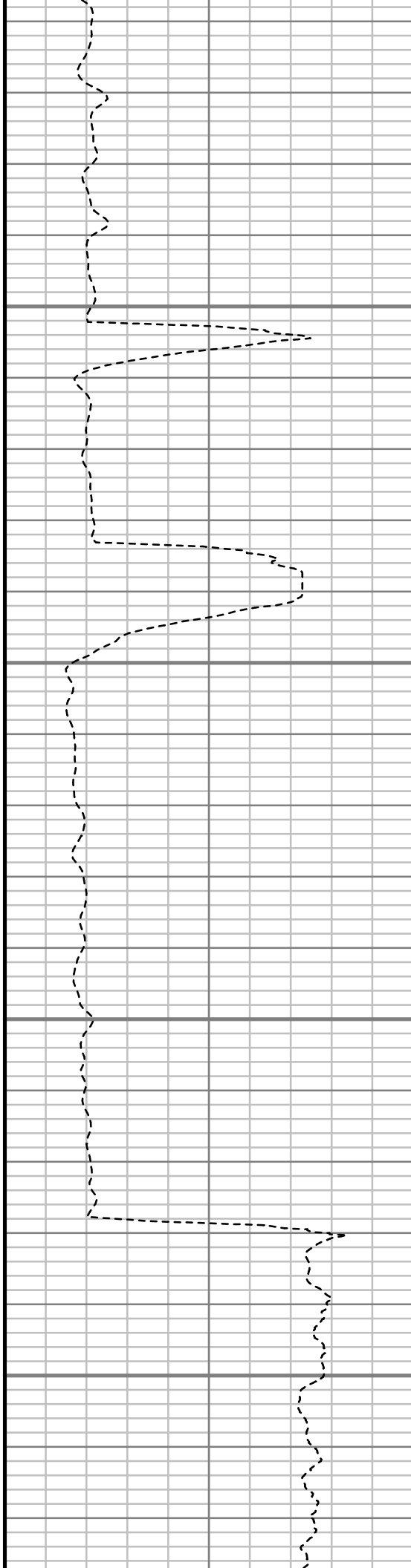


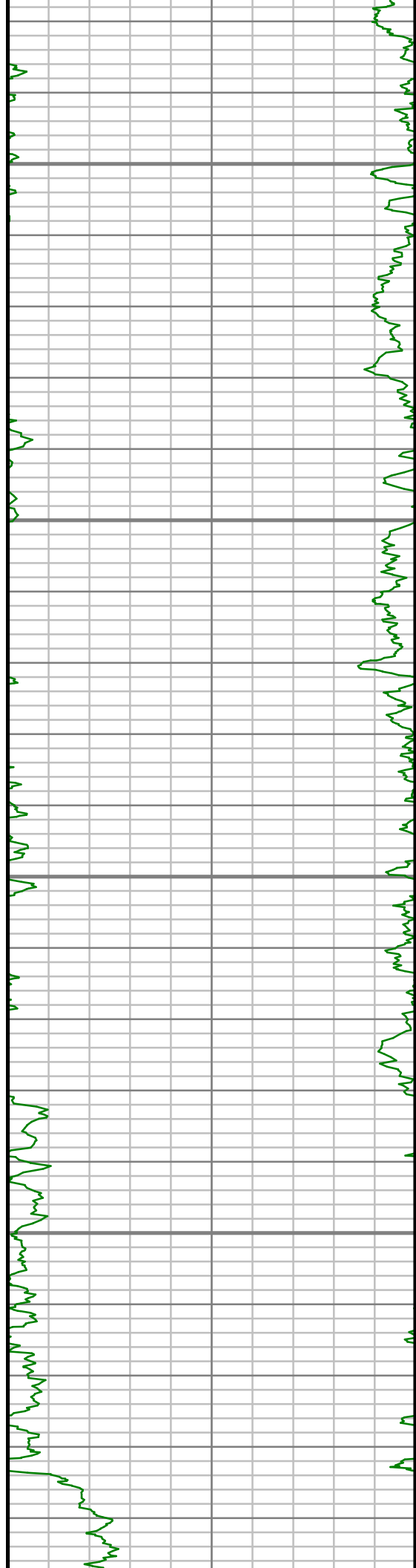
6200

6250

6300

6350



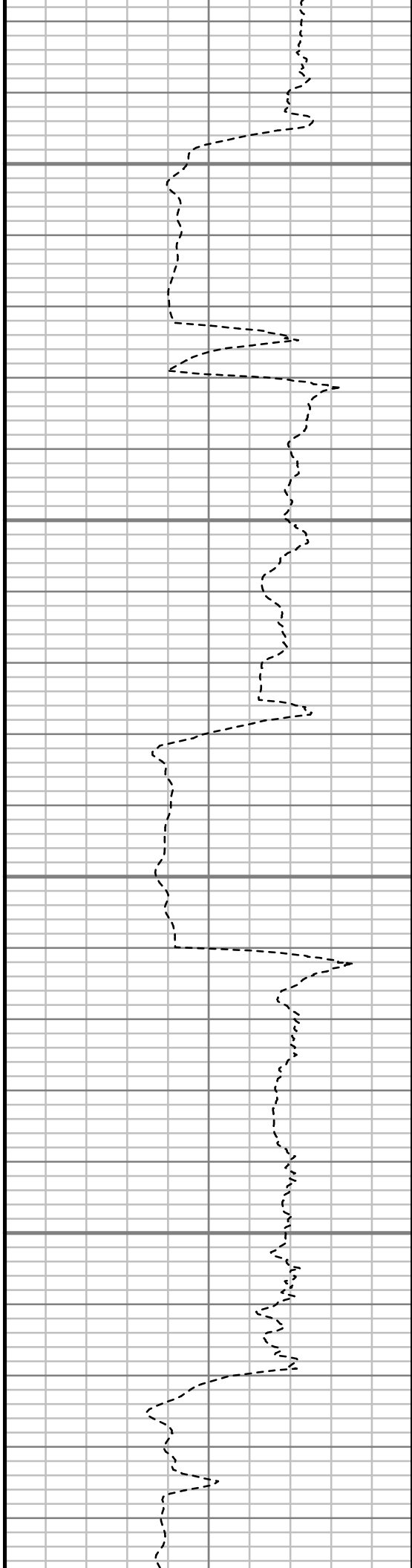


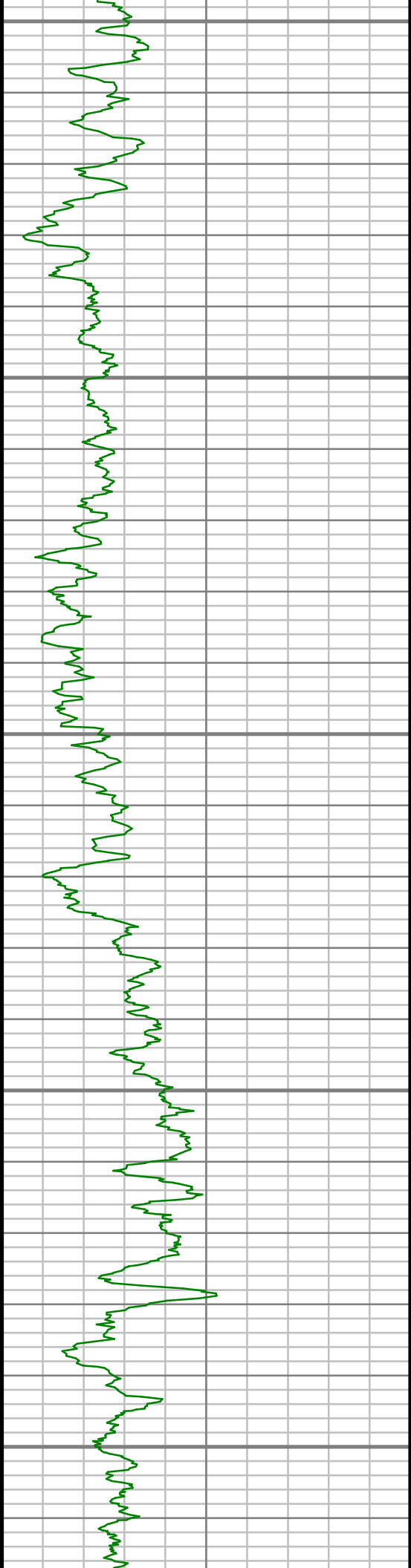
6400

6450

6500

6550





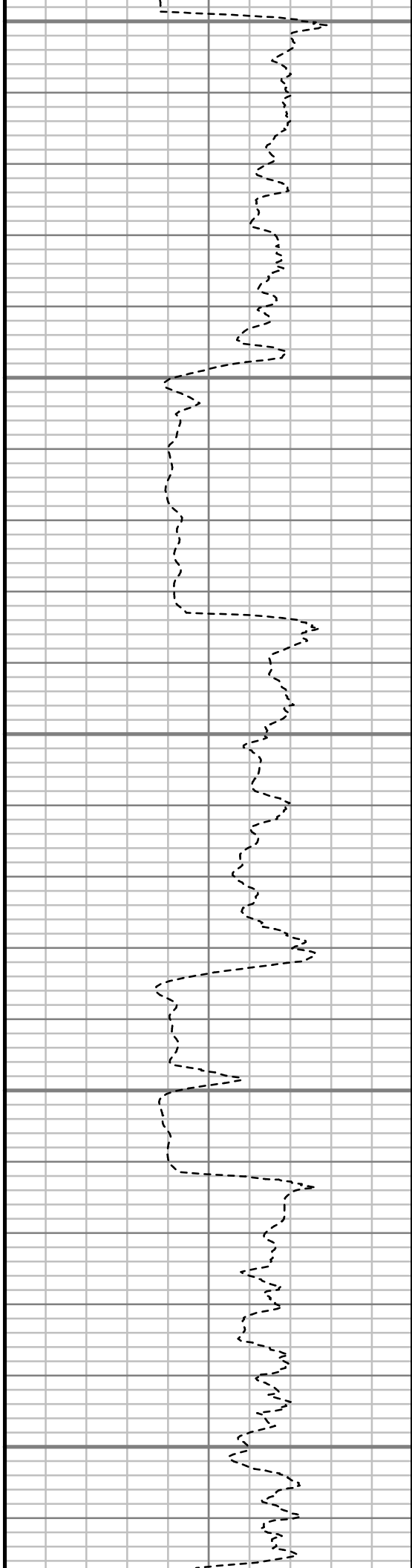
6600

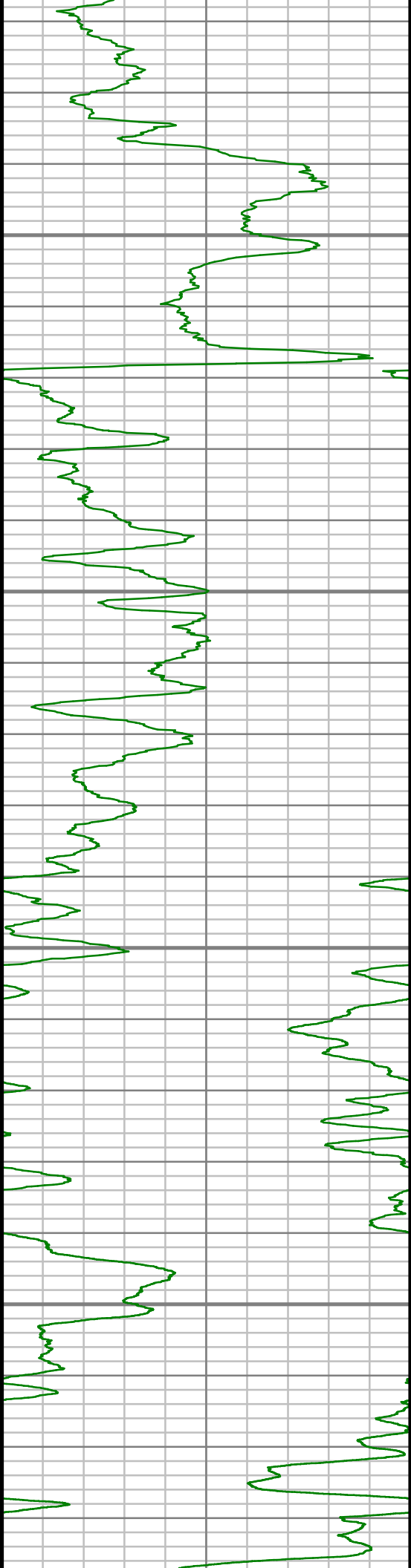
6650

6700

6750

6800



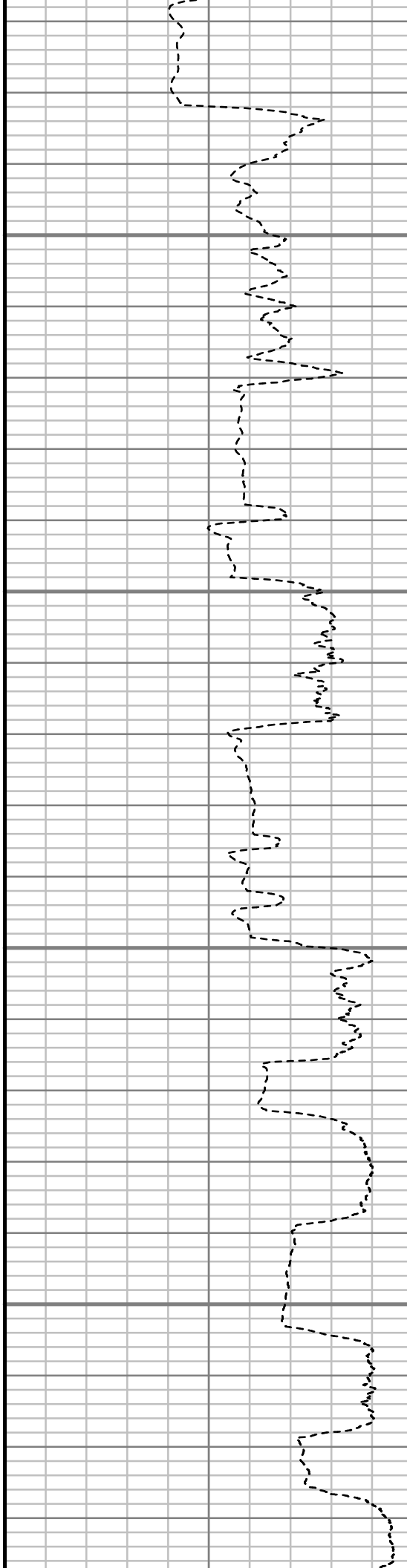


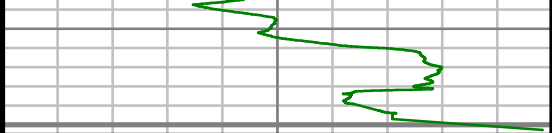
6850

6900

6950

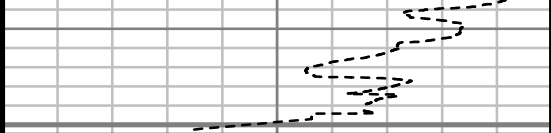
7000





Log Gamma Ray (GR)

0 Unit = aapi 150



Rate of Penetration (ROP)

550 Unit = ft/hr 0

Comments

7050
TRUE VERTICAL DEPTH
1:240 (ft)



MWD Survey Report

Well Location	RUHL
Well Name	RUHL 1A-32H-B264
Survey Date	12/6/2014
Latitude	40°6'5.180"N
Longitude	104°34'25.468"W
Btotal	52494, 52514 nT
Dip	66.71 deg
Magnetic Declination	8.37 deg
North Reference	True North
Grid Correction	None
Depth Reference	RKB (25.00 ft)
Calculation Method	Minimum Curvature
Section (VS) Ref	0.00N (ft), 0.00E (ft), 180.00Azim (deg)
Operator(s)	C. WILSON, D. PADULA, J. GREGORY, S. WAXLER, T. PLUNK

Well Notes

MD	Inc	Azim	TVD	VS	+N/-S	+E/-W	Closure Distance	Closure Direction	DLS
ft	deg	deg	ft	ft	ft	ft	ft	deg	"/100ft
0.00	0.00	0.00	0.00	0.00	0.00	0.00	0.00	0.00	Invalid
244.00	2.67	301.67	243.91	-2.99	2.99	-4.84	5.69	301.67	1.10
334.00	3.59	312.48	333.78	-5.99	5.99	-8.71	10.57	304.54	1.20
424.00	4.69	329.49	423.54	-11.06	11.06	-12.65	16.81	311.17	1.83
515.00	6.64	334.26	514.10	-19.01	19.01	-16.83	25.39	318.49	2.20
605.00	8.43	327.76	603.32	-29.28	29.28	-22.60	36.99	322.33	2.20
694.00	9.65	320.02	691.21	-40.51	40.51	-30.88	50.94	322.68	1.94
784.00	11.41	322.33	779.69	-53.34	53.34	-41.17	67.38	322.34	2.01
874.00	10.46	324.06	868.06	-67.00	67.00	-51.40	84.44	322.50	1.11
965.00	10.74	322.09	957.51	-80.38	80.38	-61.46	101.18	322.60	0.50
1057.00	11.13	319.23	1047.84	-93.86	93.86	-72.52	118.61	322.31	0.72
1151.00	10.09	318.05	1140.23	-106.85	106.85	-83.95	135.89	321.85	1.13
1276.00	10.15	321.62	1263.29	-123.64	123.64	-98.11	157.83	321.57	0.51
1459.00	10.14	319.51	1443.42	-148.53	148.53	-118.58	190.06	321.40	0.20
1640.00	10.36	320.70	1621.54	-173.24	173.24	-139.23	222.26	321.21	0.17
1821.00	10.81	320.00	1799.46	-198.84	198.84	-160.45	255.50	321.10	0.26
2002.00	10.02	317.26	1977.47	-223.41	223.41	-182.05	288.19	320.82	0.52
2183.00	5.55	316.33	2156.76	-241.31	241.31	-198.79	312.65	320.52	2.47
2366.00	3.28	320.28	2339.21	-251.73	251.73	-208.24	326.70	320.40	1.25

MD	Inc	Azim	TVD	VS	+N/-S	+E/-W	Closure Distance	Closure Direction	DLS
ft	deg	deg	ft	ft	ft	ft	ft	deg	°/100ft
2549.00	2.63	345.98	2521.97	-259.83	259.83	-212.59	335.72	320.71	0.80
2730.00	2.05	332.64	2702.82	-266.74	266.74	-215.09	342.66	321.12	0.44
2912.00	2.66	359.00	2884.67	-273.86	273.86	-216.66	349.20	321.65	0.68
3092.00	0.65	124.30	3064.61	-277.47	277.47	-215.89	351.56	322.11	1.71
3275.00	0.74	122.40	3247.60	-276.24	276.24	-214.03	349.45	322.23	0.05
3457.00	0.92	150.58	3429.58	-274.33	274.33	-212.31	346.89	322.26	0.24
3637.00	1.70	160.53	3609.53	-270.56	270.56	-210.71	342.93	322.09	0.45
3823.00	0.75	329.39	3795.51	-269.01	269.01	-210.41	341.53	321.97	1.31
4013.00	0.73	354.52	3985.49	-271.29	271.29	-211.16	343.79	322.10	0.17
4202.00	0.32	32.95	4174.49	-272.92	272.92	-211.00	344.97	322.29	0.27
4391.00	0.65	10.79	4363.48	-274.41	274.41	-210.51	345.85	322.51	0.20
4580.00	0.75	321.20	4552.47	-276.42	276.42	-211.09	347.80	322.63	0.31
4770.00	0.15	291.74	4742.46	-277.48	277.48	-212.10	349.26	322.61	0.33
4961.00	0.37	100.24	4933.46	-277.47	277.47	-211.72	349.02	322.65	0.27
5150.00	0.20	169.89	5122.46	-277.04	277.04	-211.06	348.28	322.70	0.19
5340.00	0.50	150.84	5312.45	-275.99	275.99	-210.60	347.17	322.65	0.17
5530.00	0.42	30.66	5502.45	-275.86	275.86	-209.84	346.60	322.74	0.42
5719.00	1.04	23.06	5691.43	-278.02	278.02	-208.82	347.71	323.09	0.33

MD	Inc	Azim	TVD	VS	+N/-S	+E/-W	Closure Distance	Closure Direction	DLS
ft	deg	deg	ft	ft	ft	ft	ft	deg	°/100ft
5909.00	1.82	231.15	5881.41	-277.71	277.71	-210.49	348.47	322.84	1.46
6099.00	1.63	246.89	6071.32	-274.76	274.76	-215.33	349.08	321.91	0.27
6289.00	1.32	221.12	6261.26	-272.05	272.05	-219.25	349.40	321.13	0.38
6383.00	4.98	170.95	6355.12	-267.20	267.20	-219.32	345.69	320.62	4.53
6478.00	12.08	170.49	6449.00	-253.30	253.30	-217.03	333.56	319.41	7.48
6573.00	19.72	174.21	6540.30	-227.51	227.51	-213.77	312.18	316.78	8.10
6668.00	26.69	177.93	6627.57	-190.20	190.20	-211.38	284.35	311.98	7.50
6763.00	32.77	177.16	6710.02	-143.15	143.15	-209.33	253.60	304.37	6.42
6858.00	39.94	178.80	6786.48	-86.91	86.91	-207.41	224.89	292.73	7.61
6952.00	52.43	178.52	6851.43	-19.23	19.23	-205.81	206.71	275.34	13.29
7047.00	60.34	176.29	6903.99	59.73	-59.73	-202.17	210.81	253.54	8.55
7142.00	64.49	174.59	6947.97	143.64	-143.64	-195.45	242.56	233.69	4.64
7235.00	70.63	180.60	6983.49	229.43	-229.43	-191.95	299.14	219.92	8.91
7330.00	74.90	181.25	7011.62	320.13	-320.13	-193.42	374.03	211.14	4.54
7425.00	81.25	182.21	7031.24	412.99	-412.99	-196.24	457.24	205.42	6.75
7607.00	88.86	182.05	7046.93	594.06	-594.06	-202.97	627.77	198.86	4.18
7698.00	90.03	180.30	7047.81	685.03	-685.03	-204.83	715.00	196.65	2.32
7793.00	91.44	180.96	7046.58	780.01	-780.01	-205.87	806.72	194.79	1.64

MD	Inc	Azim	TVD	VS	+N/-S	+E/-W	Closure Distance	Closure Direction	DLS
ft	deg	deg	ft	ft	ft	ft	ft	deg	°/100ft
7887.00	90.37	180.44	7045.10	873.99	-873.99	-207.02	898.17	193.33	1.27
7982.00	90.10	179.65	7044.71	968.99	-968.99	-207.09	990.87	192.06	0.87
8077.00	88.22	179.56	7046.10	1063.97	-1063.97	-206.45	1083.82	190.98	1.98
8172.00	88.93	179.88	7048.47	1158.94	-1158.94	-205.98	1177.10	190.08	0.82
8266.00	89.97	181.14	7049.37	1252.93	-1252.93	-206.82	1269.89	189.37	1.74
8361.00	90.13	180.93	7049.29	1347.91	-1347.91	-208.54	1363.95	188.79	0.28
8456.00	89.87	181.63	7049.29	1442.89	-1442.89	-210.66	1458.19	188.31	0.78
8550.00	90.81	181.12	7048.74	1536.86	-1536.86	-212.91	1551.54	187.89	1.14
8645.00	91.74	181.57	7046.62	1631.81	-1631.81	-215.15	1645.93	187.51	1.10
8739.00	91.17	182.95	7044.23	1725.70	-1725.70	-218.86	1739.52	187.23	1.59
8834.00	89.97	180.44	7043.29	1820.65	-1820.65	-221.66	1834.09	186.94	2.94
8928.00	89.43	179.31	7043.78	1914.64	-1914.64	-221.46	1927.41	186.60	1.32
9023.00	89.50	179.52	7044.67	2009.63	-2009.63	-220.49	2021.69	186.26	0.23
9118.00	89.46	180.17	7045.53	2104.63	-2104.63	-220.23	2116.12	185.97	0.68
9213.00	90.34	180.33	7045.70	2199.63	-2199.63	-220.64	2210.67	185.73	0.93
9307.00	89.06	181.94	7046.20	2293.60	-2293.60	-222.50	2304.37	185.54	2.18
9402.00	90.40	181.03	7046.64	2388.57	-2388.57	-224.97	2399.14	185.38	1.70
9497.00	90.97	180.66	7045.50	2483.55	-2483.55	-226.37	2493.84	185.21	0.72

MD	Inc	Azim	TVD	VS	+N/-S	+E/-W	Closure Distance	Closure Direction	DLS
ft	deg	deg	ft	ft	ft	ft	ft	deg	°/100ft
9592.00	90.17	179.92	7044.56	2578.54	-2578.54	-226.84	2588.50	185.03	1.15
9686.00	89.26	179.45	7045.02	2672.54	-2672.54	-226.32	2682.10	184.84	1.08
9781.00	89.23	179.17	7046.27	2767.52	-2767.52	-225.18	2776.67	184.65	0.31
9876.00	89.26	179.11	7047.53	2862.50	-2862.50	-223.75	2871.24	184.47	0.07
9971.00	90.54	179.79	7047.69	2957.50	-2957.50	-222.84	2965.88	184.31	1.52
10066.00	89.36	179.58	7047.78	3052.49	-3052.49	-222.31	3060.58	184.17	1.25
10160.00	90.23	180.16	7048.11	3146.49	-3146.49	-222.10	3154.32	184.04	1.11
10255.00	88.56	180.81	7049.11	3241.48	-3241.48	-222.90	3249.13	183.93	1.89
10350.00	89.77	179.46	7050.50	3336.46	-3336.46	-223.12	3343.92	183.83	1.91
10444.00	90.74	179.61	7050.08	3430.46	-3430.46	-222.35	3437.66	183.71	1.05
10539.00	90.20	179.51	7049.31	3525.45	-3525.45	-221.62	3532.41	183.60	0.57
10634.00	90.47	179.97	7048.75	3620.45	-3620.45	-221.18	3627.20	183.50	0.56
10729.00	90.97	178.56	7047.55	3715.43	-3715.43	-219.96	3721.94	183.39	1.58
10824.00	89.73	180.25	7046.97	3810.42	-3810.42	-218.97	3816.71	183.29	2.21
10919.00	91.34	179.86	7046.08	3905.41	-3905.41	-219.06	3911.55	183.21	1.75
11013.00	91.61	180.68	7043.66	3999.38	-3999.38	-219.50	4005.40	183.14	0.92
11108.00	90.57	180.57	7041.85	4094.35	-4094.35	-220.54	4100.29	183.08	1.10
11203.00	89.60	179.79	7041.71	4189.35	-4189.35	-220.84	4195.17	183.02	1.31

MD	Inc	Azim	TVD	VS	+N/-S	+E/-W	Closure Distance	Closure Direction	DLS
ft	deg	deg	ft	ft	ft	ft	ft	deg	°/100ft
11297.00	90.00	179.96	7042.04	4283.35	-4283.35	-220.64	4289.03	182.95	0.46
11392.00	89.23	179.60	7042.68	4378.35	-4378.35	-220.28	4383.88	182.88	0.90
11471.00	88.49	179.49	7044.25	4457.33	-4457.33	-219.65	4462.74	182.82	0.94

MD	Inc	Azim	TVD	VS	+N/-S	+E/-W	Closure Distance	Closure Direction	DLS
ft	deg	deg	ft	ft	ft	ft	ft	deg	°/100ft

5" = 100' FEET TVD