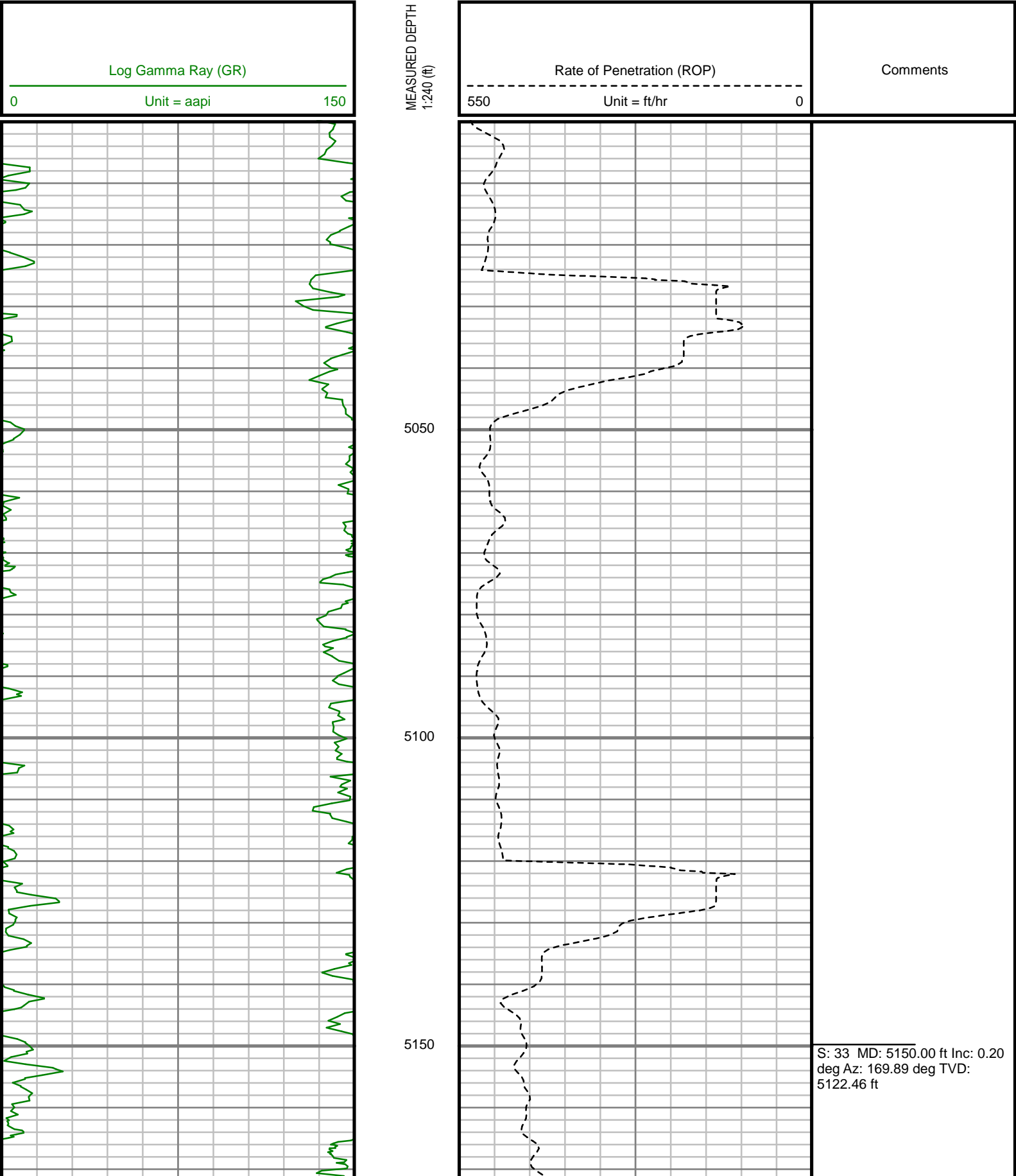


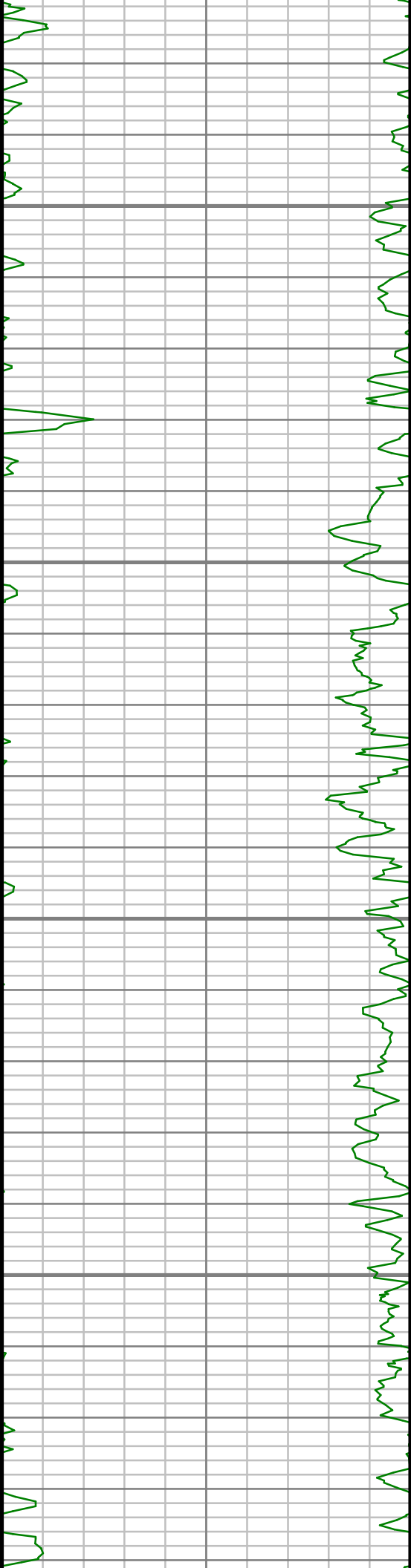




All interpretations are opinions based on inferences from electrical or other measurements and we cannot, and do not guarantee the accuracy or correctness of any interpretations, and we shall not, except in the case of gross or willful negligence on our part, be liable or responsible for any loss, costs, damages or expenses incurred or sustained by anyone resulting from any interpretation made by any of our officers, agents or employees. These interpretations are also subject to our general terms and conditions as set out in our current price schedule.

ENCANA OIL AND GAS (U.S.A.) INC  
RUHL 1A-32H-B264  
WATTENBERG  
WELD COUNTY, COLORADO  
05-123-40281



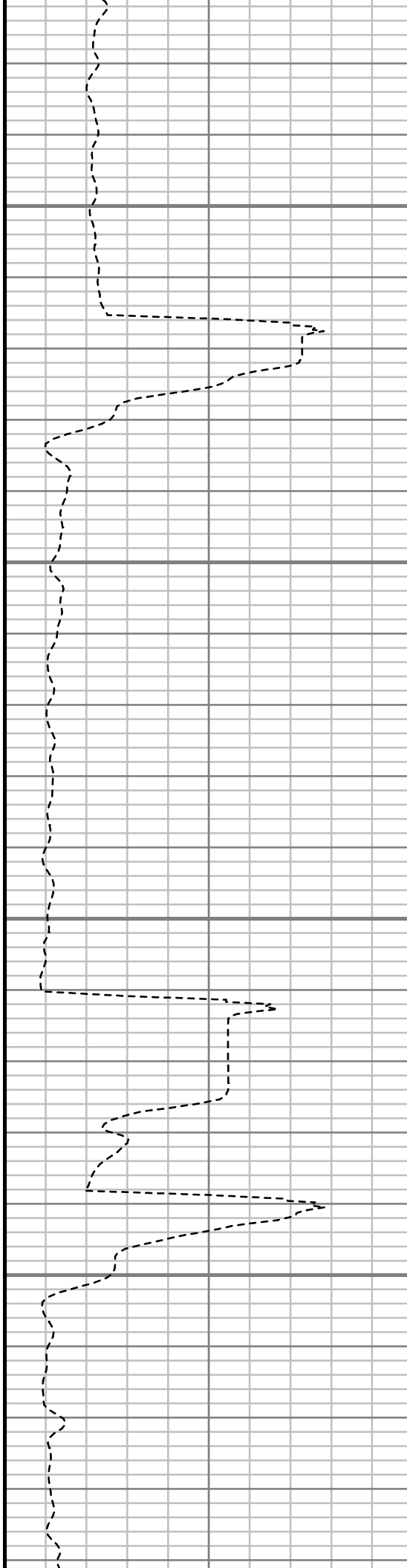


5200

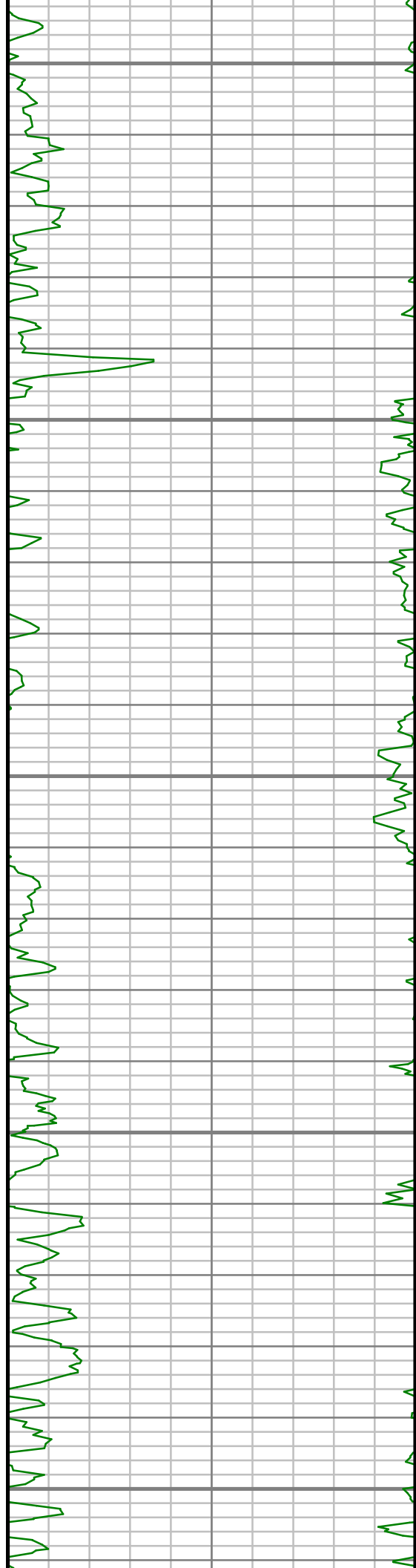
5250

5300

5350



S: 34 MD: 5340.00 ft Inc: 0.50  
deg Az: 150.84 deg TVD:  
5312.45 ft



5400

5450

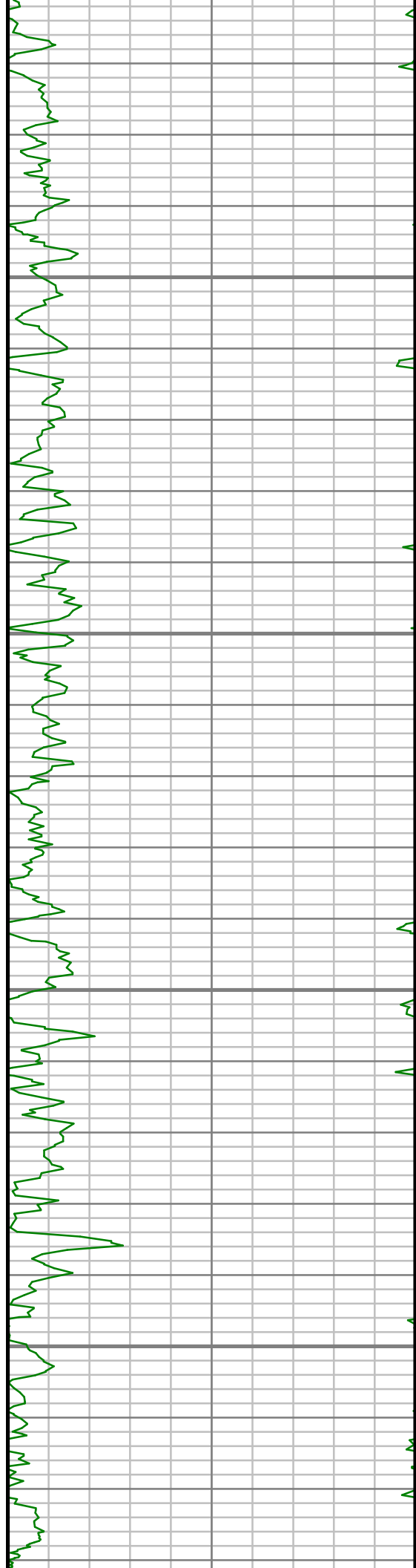
5500

5550

5600



S: 35 MD: 5530.00 ft Inc: 0.42  
deg Az: 30.66 deg TVD:  
5502.45 ft

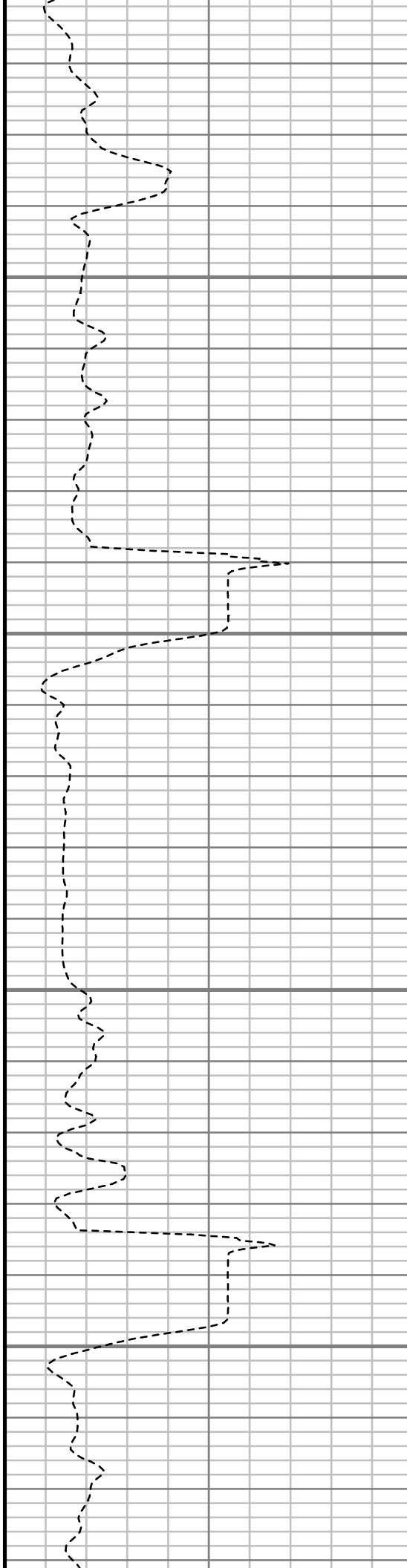


5650

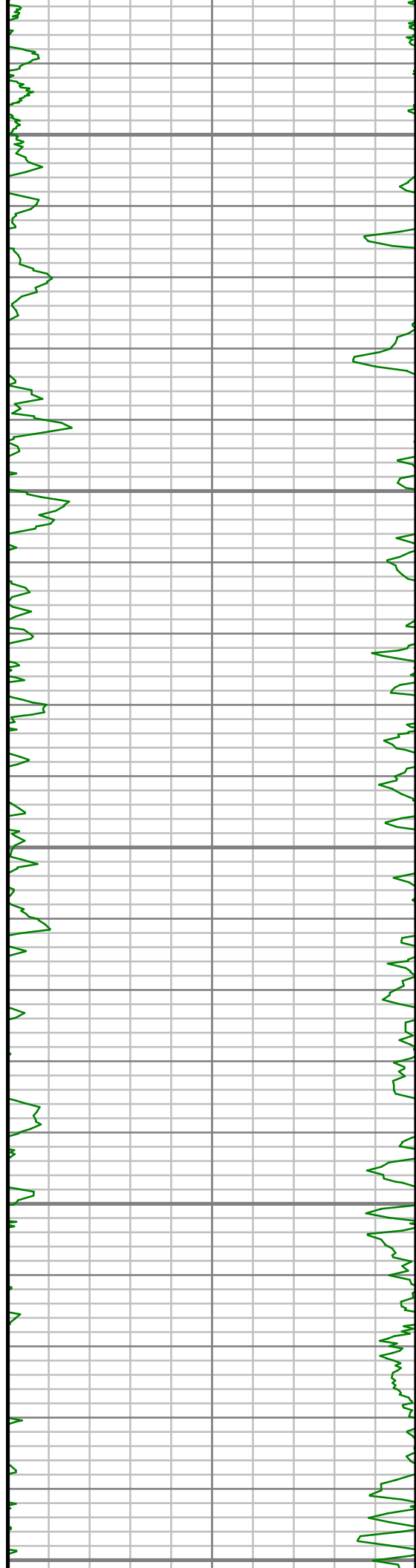
5700

5750

5800



S: 36 MD: 5719.00 ft Inc: 1.04  
deg Az: 23.06 deg TVD:  
5691.43 ft



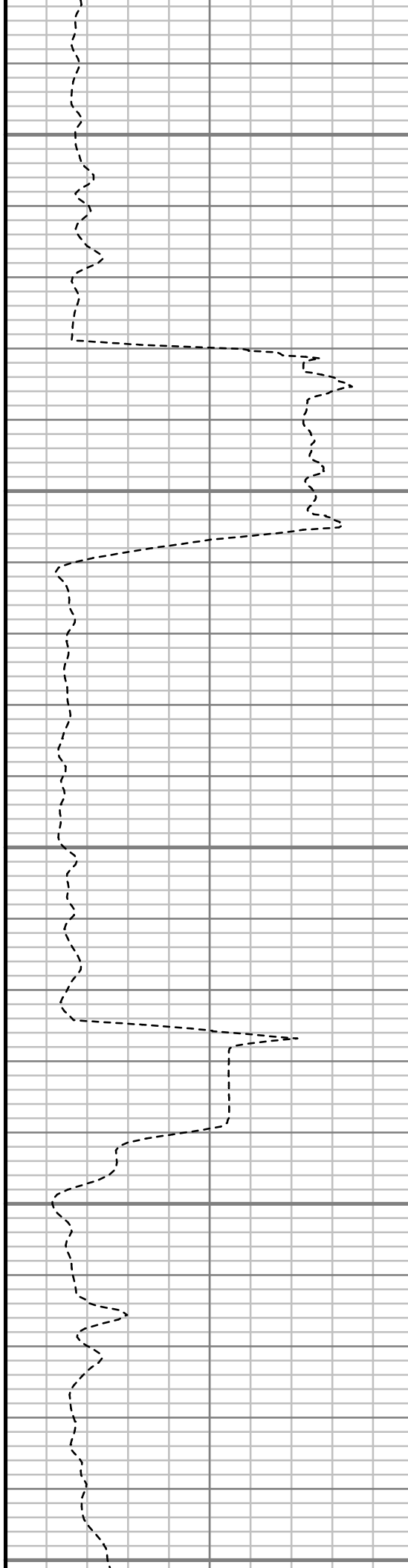
5850

5900

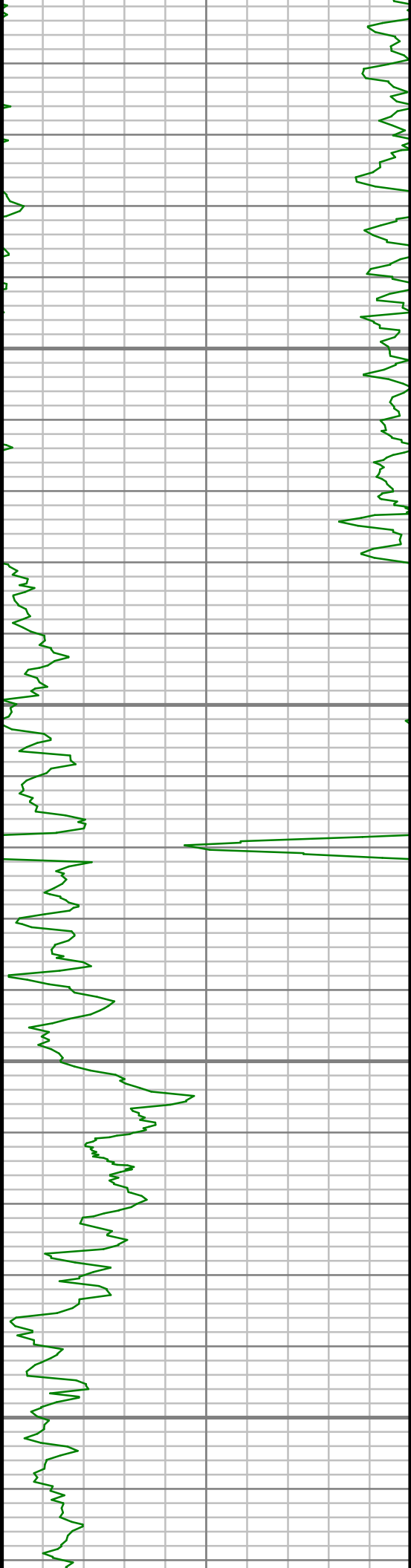
5950

6000

6050



S: 37 MD: 5909.00 ft Inc: 1.82  
deg Az: 231.15 deg TVD:  
5881.41 ft

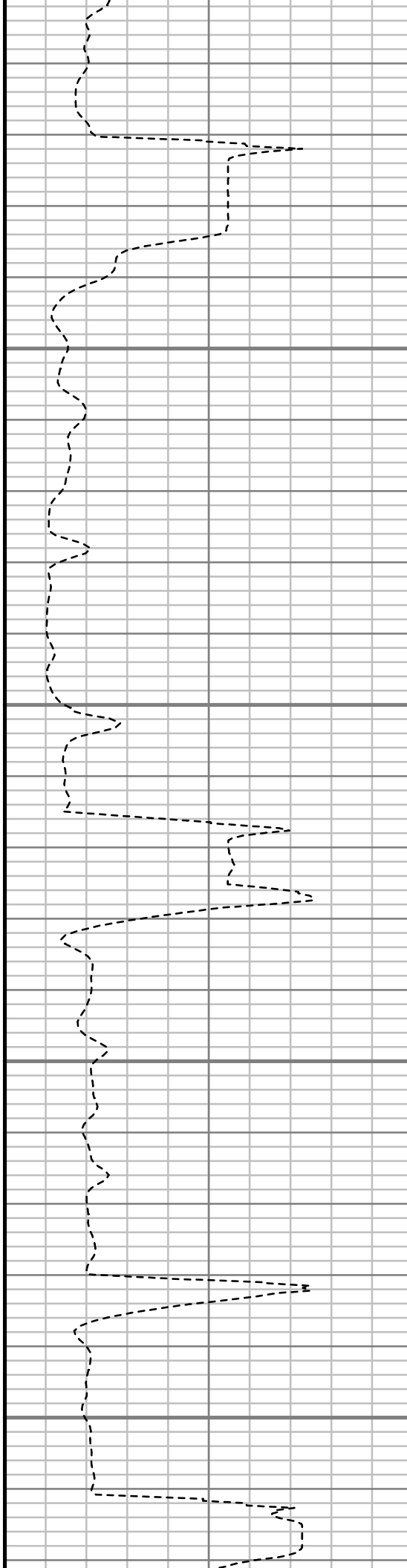


6100

6150

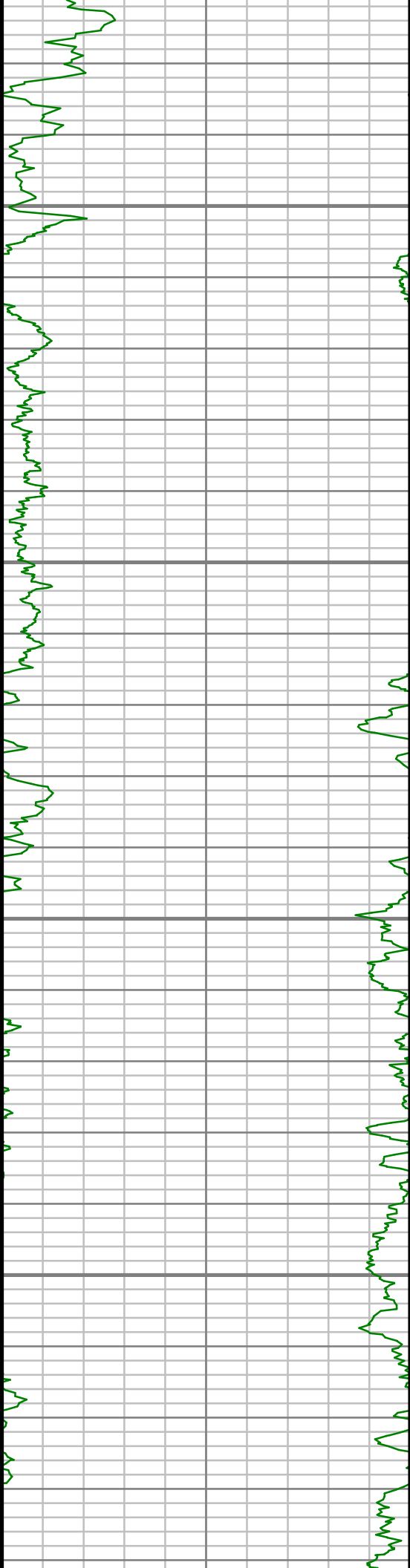
6200

6250



S: 38 MD: 6099.00 ft Inc: 1.63  
deg Az: 246.89 deg TVD:  
6071.32 ft



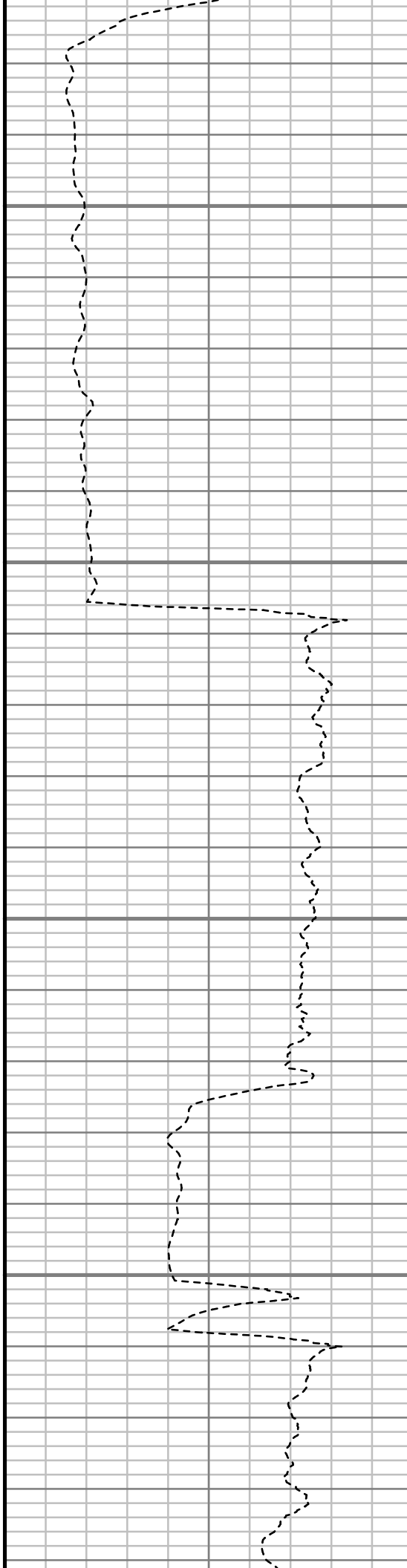


6300

6350

6400

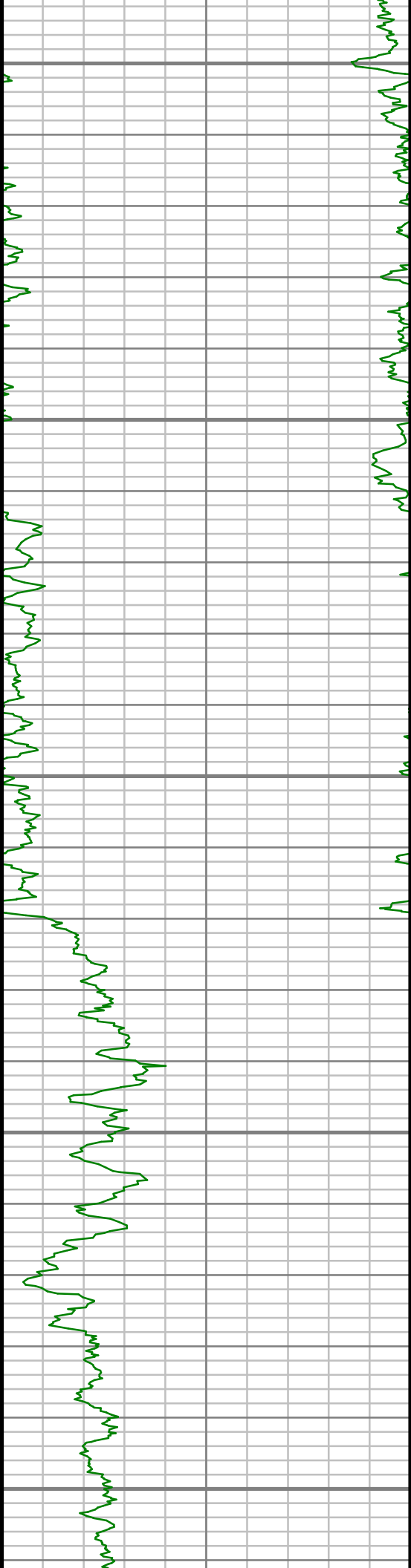
6450



S: 39 MD: 6289.00 ft Inc: 1.32  
deg Az: 221.12 deg TVD:  
6261.26 ft

S: 40 MD: 6383.00 ft Inc: 4.98  
deg Az: 170.95 deg TVD:  
6355.12 ft

S: 41 MD: 6478.00 ft Inc: 12.08  
deg Az: 170.49 deg TVD:  
6449.00 ft



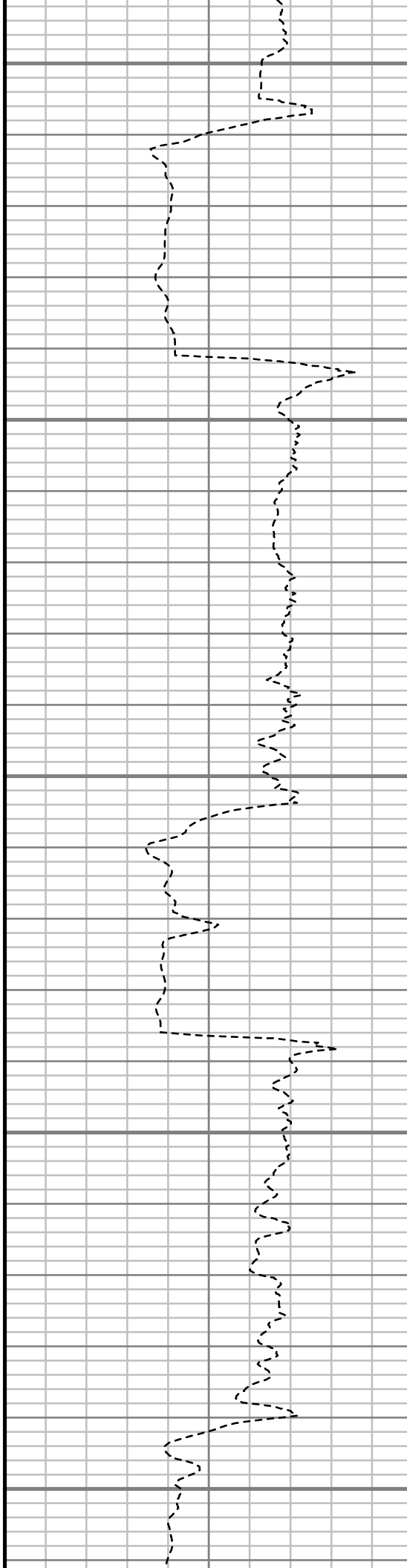
6500

6550

6600

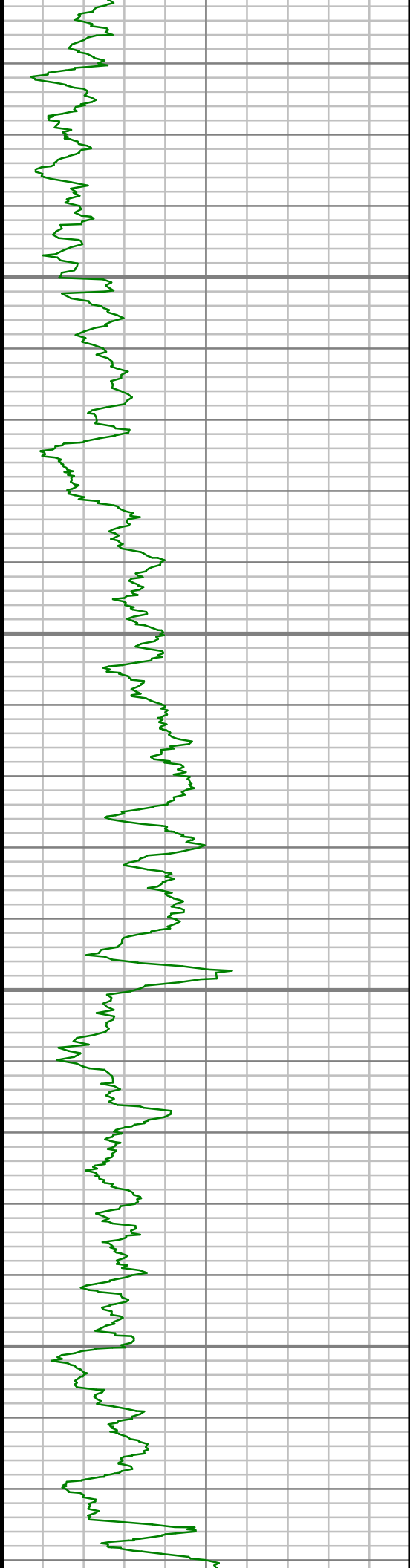
6650

6700



S: 42 MD: 6573.00 ft Inc: 19.72  
deg Az: 174.21 deg TVD:  
6540.30 ft

S: 43 MD: 6668.00 ft Inc: 26.69  
deg Az: 177.93 deg TVD:  
6627.57 ft

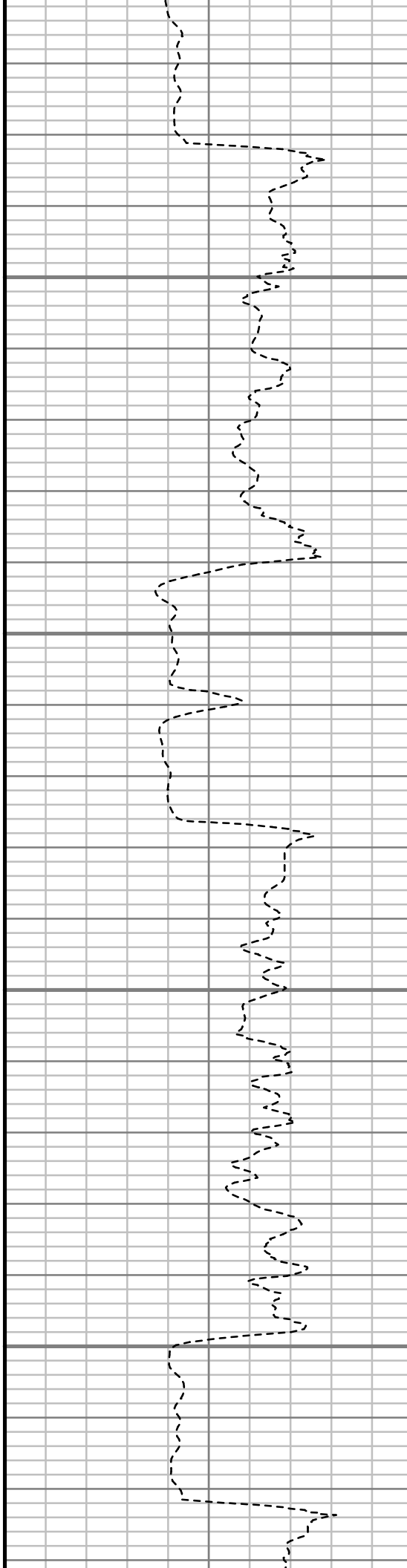


6750

6800

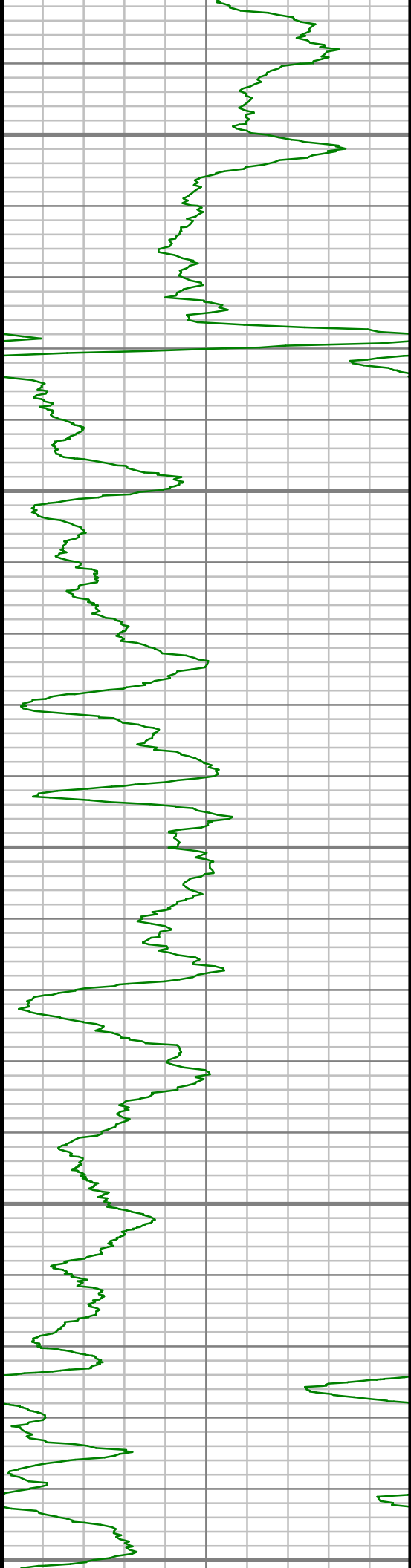
6850

6900



S: 44 MD: 6763.00 ft Inc: 32.77  
deg Az: 177.16 deg TVD:  
6710.02 ft

S: 45 MD: 6858.00 ft Inc: 39.94  
deg Az: 178.80 deg TVD:  
6786.48 ft



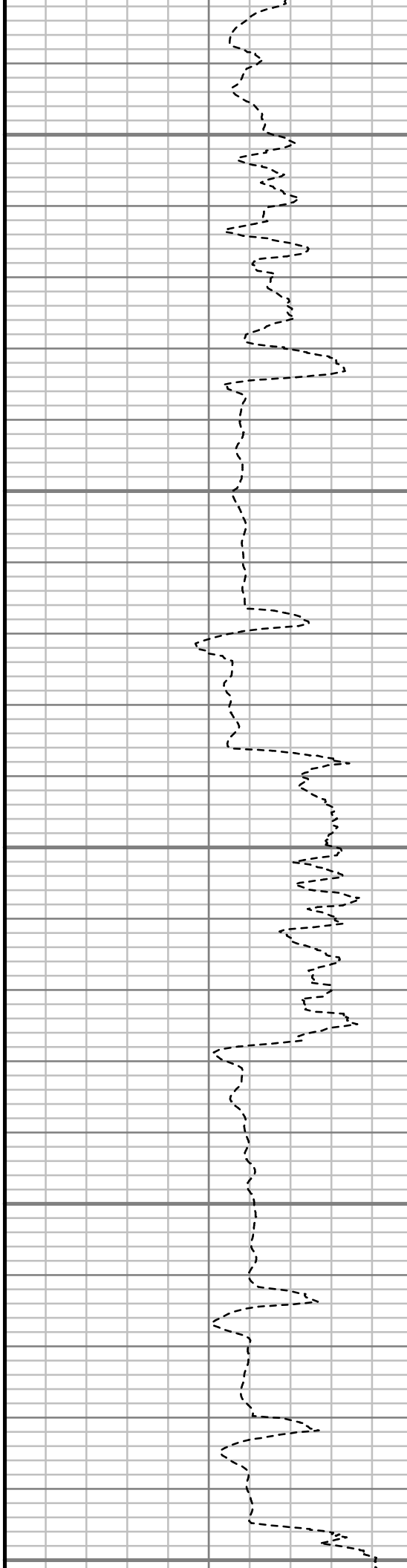
6950

7000

7050

7100

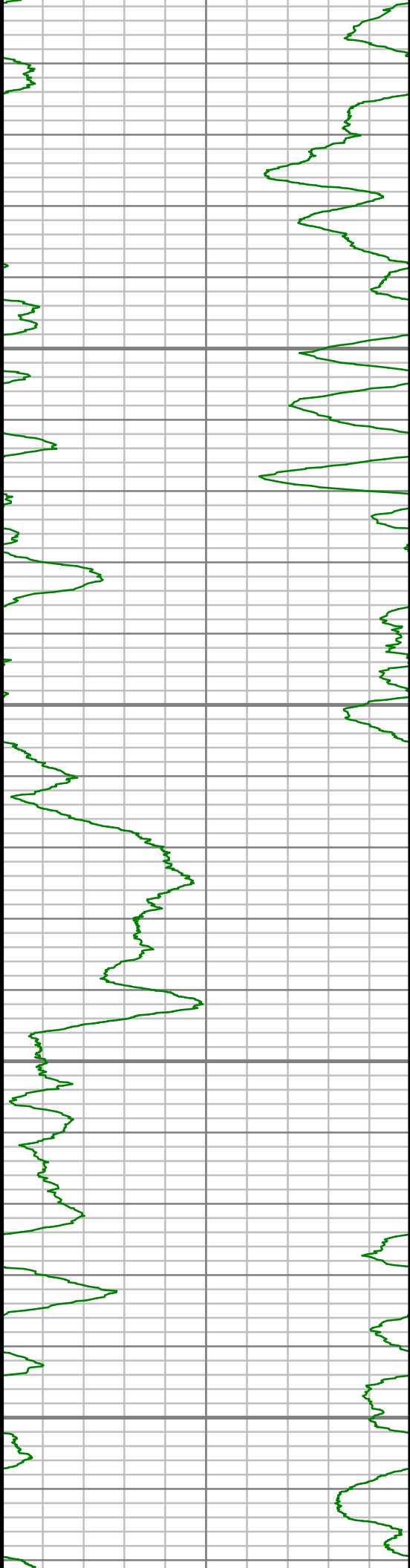
7150



S: 46 MD: 6952.00 ft Inc: 52.43  
deg Az: 178.52 deg TVD:  
6851.43 ft

S: 47 MD: 7047.00 ft Inc: 60.34  
deg Az: 176.29 deg TVD:  
6903.99 ft

S: 48 MD: 7142.00 ft Inc: 64.49  
deg Az: 174.59 deg TVD:  
6947.97 ft

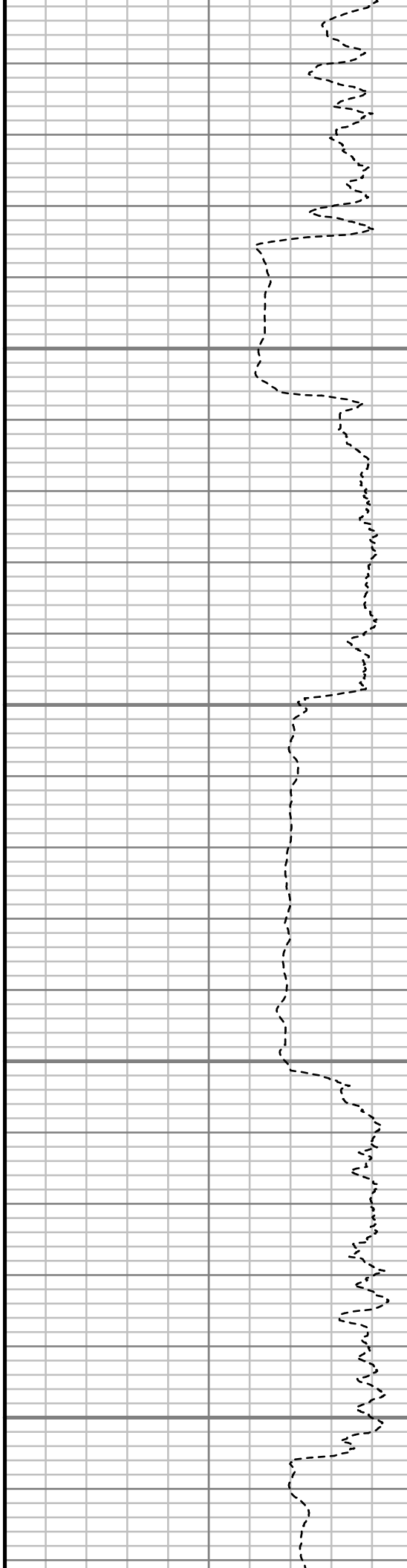


7200

7250

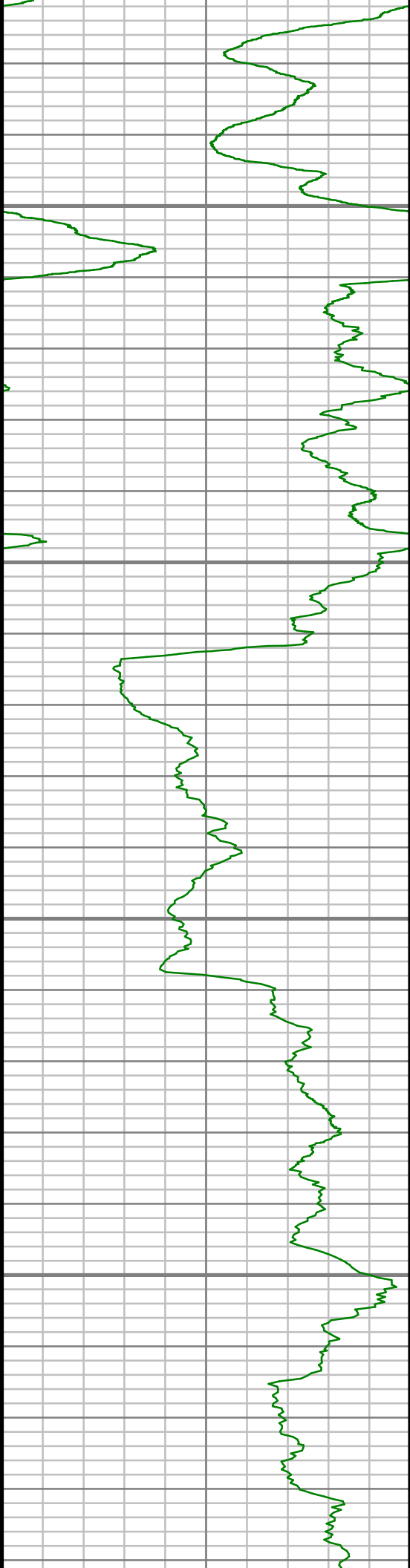
7300

7350



S: 49 MD: 7235.00 ft Inc: 70.63  
deg Az: 180.60 deg TVD:  
6983.49 ft

S: 50 MD: 7330.00 ft Inc: 74.90  
deg Az: 181.25 deg TVD:  
7011.62 ft

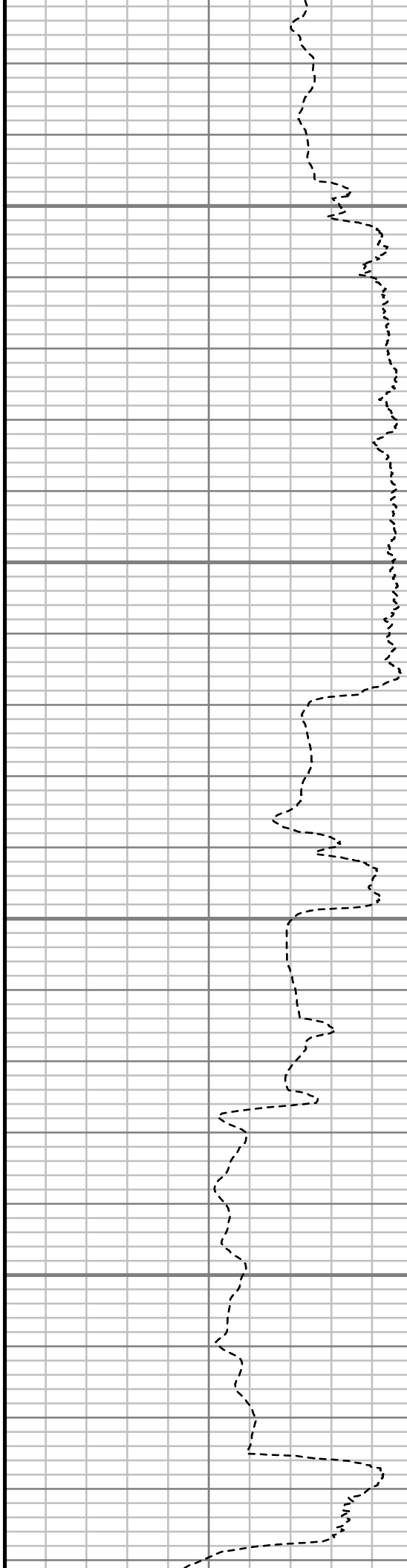


7400

7450

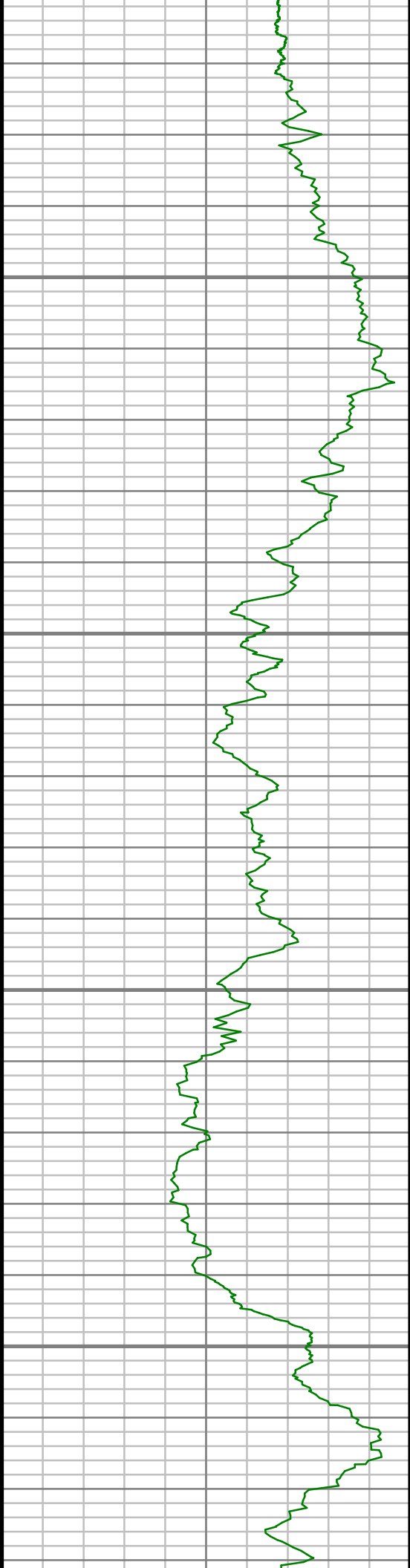
7500

7550



S: 51 MD: 7425.00 ft Inc: 81.25  
deg Az: 182.21 deg TVD:  
7031.24 ft



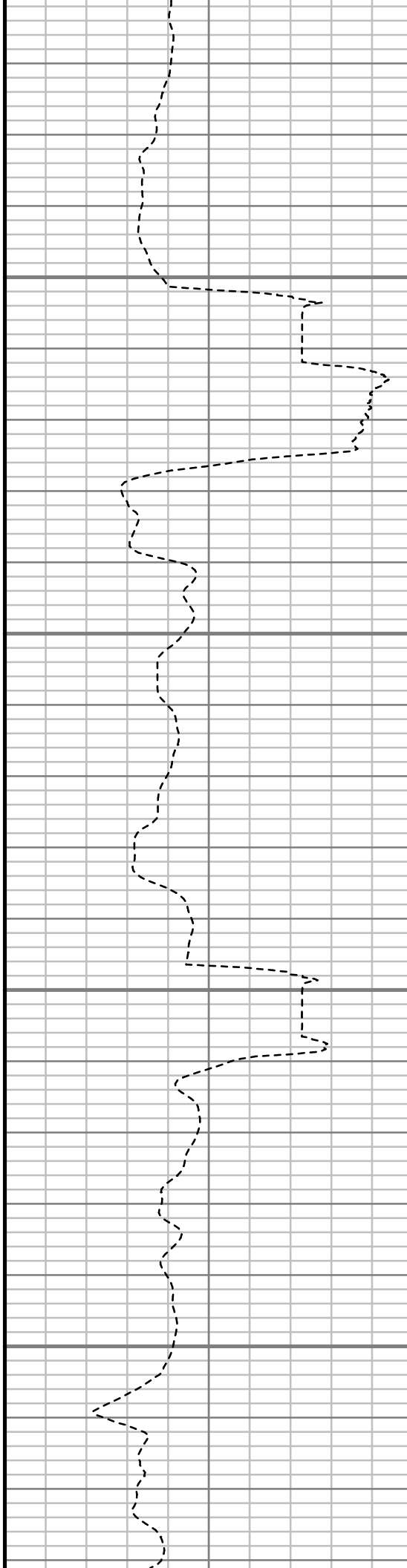


7850

7900

7950

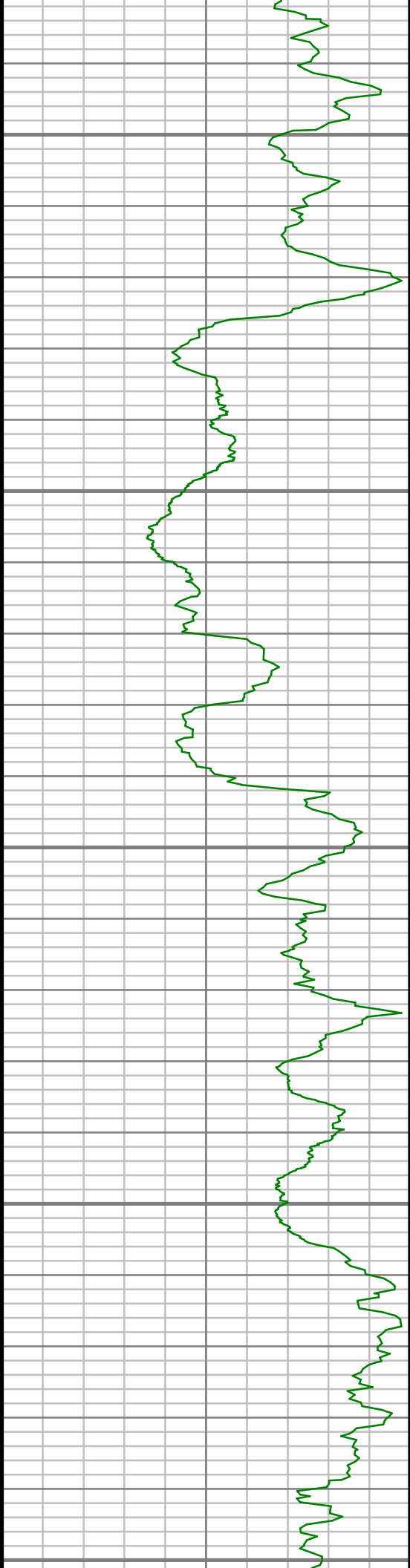
8000



S: 55 MD: 7887.00 ft Inc: 90.37  
deg Az: 180.44 deg TVD:  
7045.10 ft

S: 56 MD: 7982.00 ft Inc: 90.10  
deg Az: 179.65 deg TVD:  
7044.71 ft





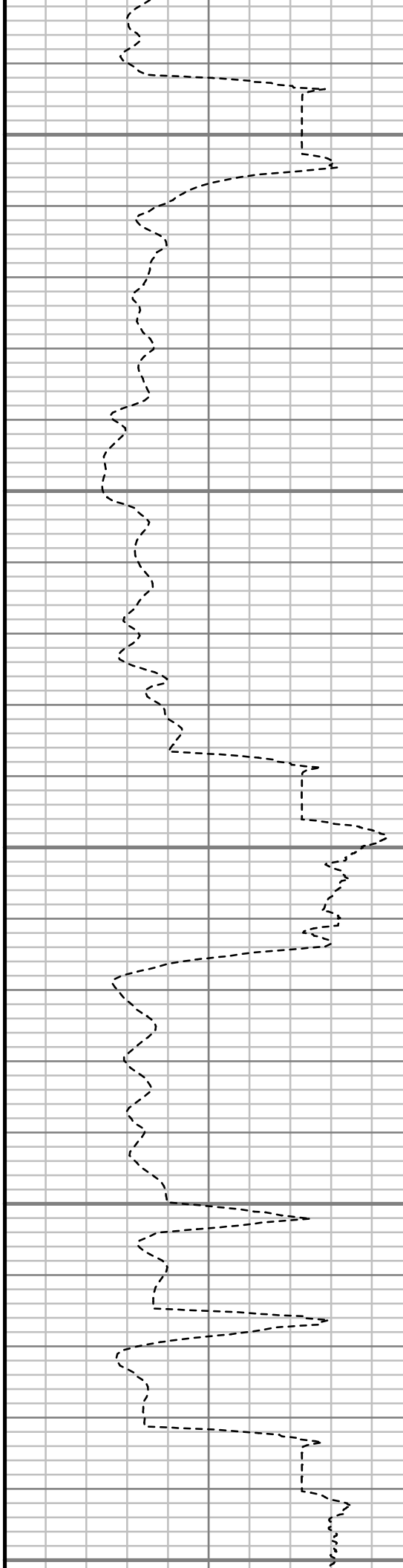
8050

8100

8150

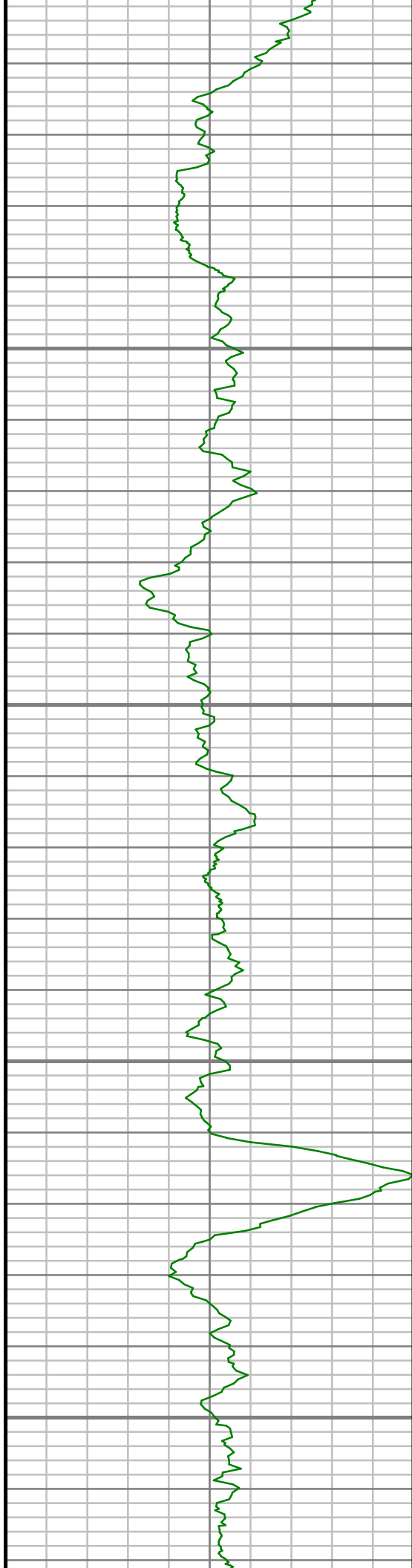
8200

8250



S: 57 MD: 8077.00 ft Inc: 88.22  
deg Az: 179.56 deg TVD:  
7046.10 ft

S: 58 MD: 8172.00 ft Inc: 88.93  
deg Az: 179.88 deg TVD:  
7048.47 ft

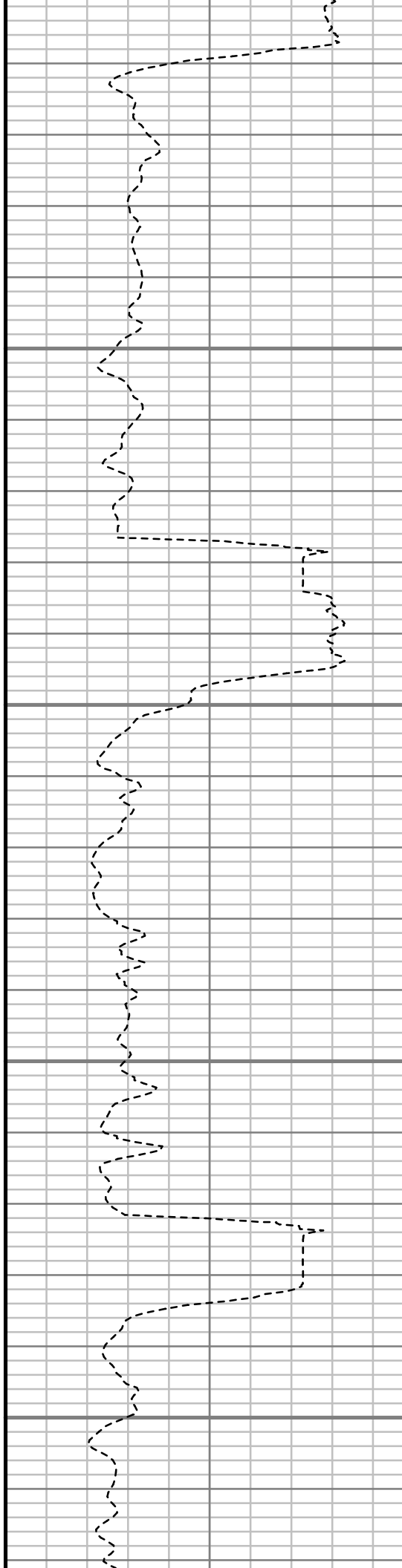


8300

8350

8400

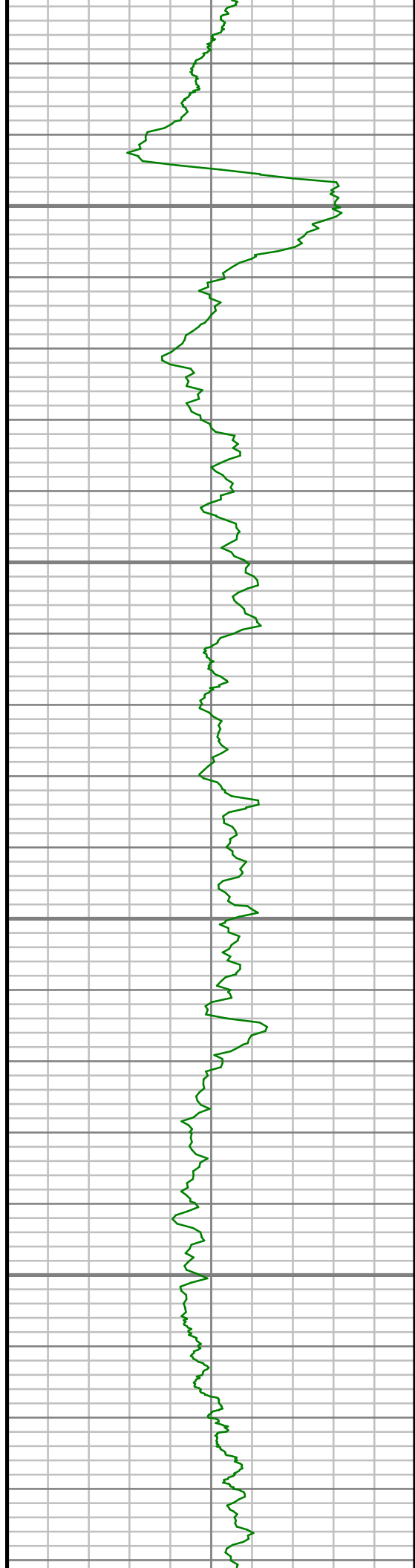
8450



S: 59 MD: 8266.00 ft Inc: 89.97  
deg Az: 181.14 deg TVD:  
7049.37 ft

S: 60 MD: 8361.00 ft Inc: 90.13  
deg Az: 180.93 deg TVD:  
7049.29 ft

S: 61 MD: 8456.00 ft Inc: 89.87  
deg Az: 181.63 deg TVD:  
7049.29 ft

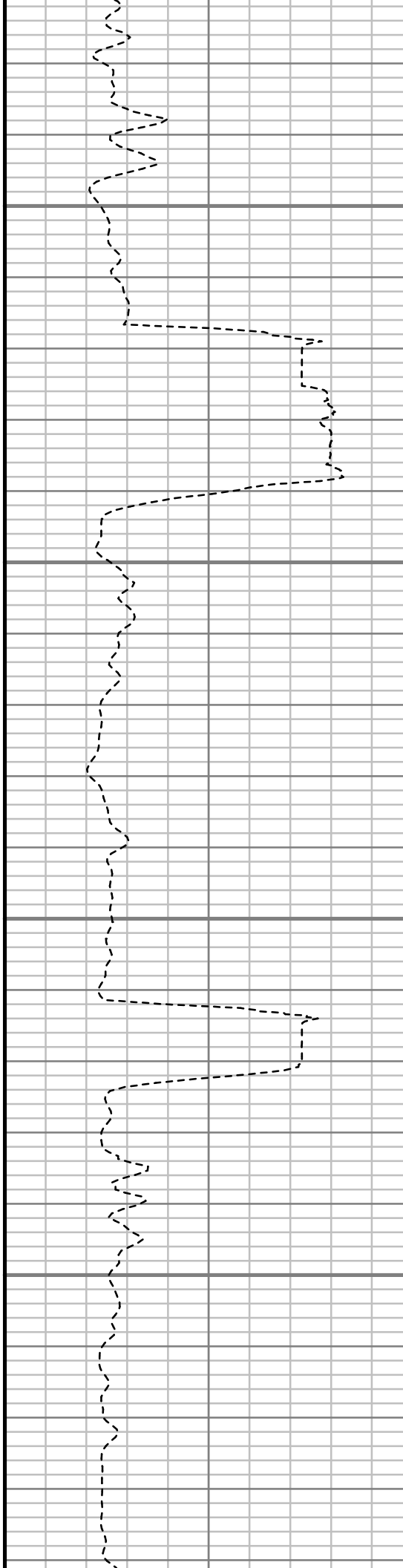


8500

8550

8600

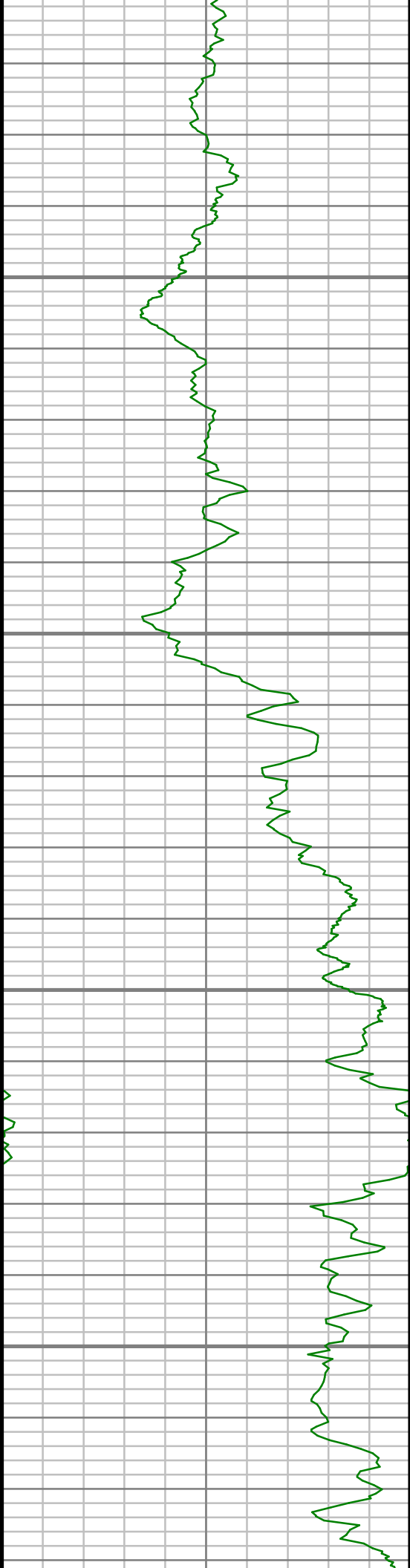
8650



S: 62 MD: 8550.00 ft Inc: 90.81  
deg Az: 181.12 deg TVD:  
7048.74 ft

S: 63 MD: 8645.00 ft Inc: 91.74  
deg Az: 181.57 deg TVD:  
7046.62 ft



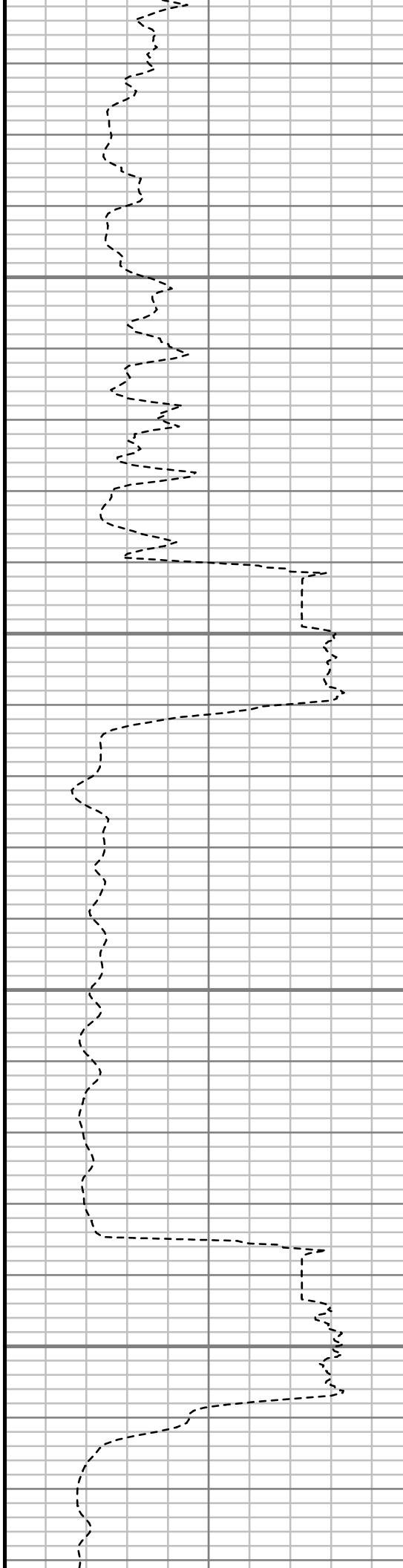


8950

9000

9050

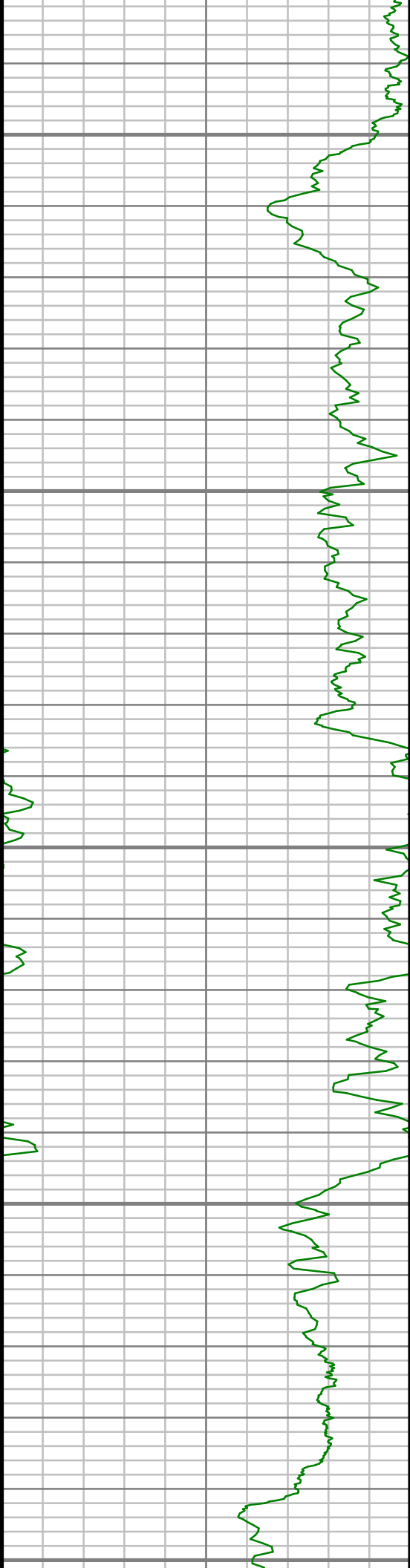
9100



S: 66 MD: 8928.00 ft Inc: 89.43  
deg Az: 179.31 deg TVD:  
7043.78 ft

S: 67 MD: 9023.00 ft Inc: 89.50  
deg Az: 179.52 deg TVD:  
7044.67 ft

S: 68 MD: 9118.00 ft Inc: 89.46  
deg Az: 180.17 deg TVD:  
7045.53 ft



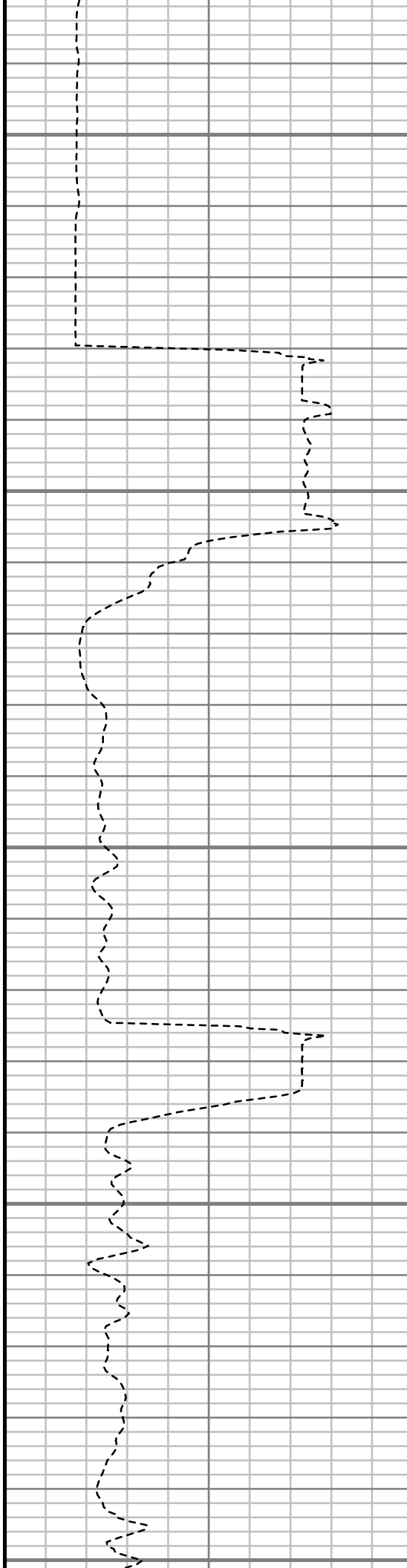
9150

9200

9250

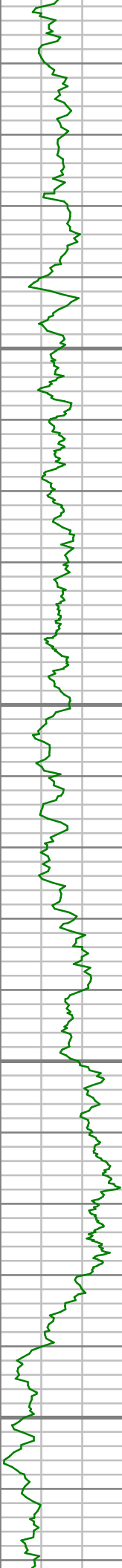
9300

9350



S: 69 MD: 9213.00 ft Inc: 90.34  
deg Az: 180.33 deg TVD:  
7045.70 ft

S: 70 MD: 9307.00 ft Inc: 89.06  
deg Az: 181.94 deg TVD:  
7046.20 ft

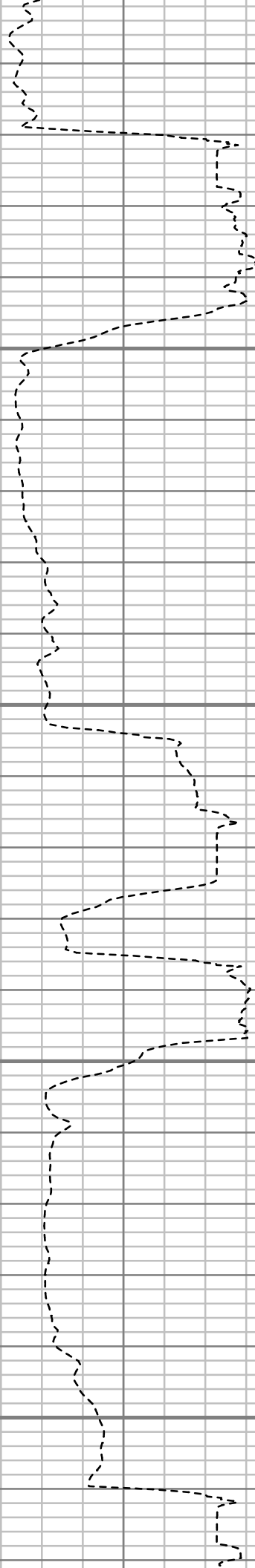


9400

9450

9500

9550



S: 71 MD: 9402.00 ft Inc: 90.40  
deg Az: 181.03 deg TVD:  
7046.64 ft

S: 72 MD: 9497.00 ft Inc: 90.97  
deg Az: 180.66 deg TVD:  
7045.50 ft

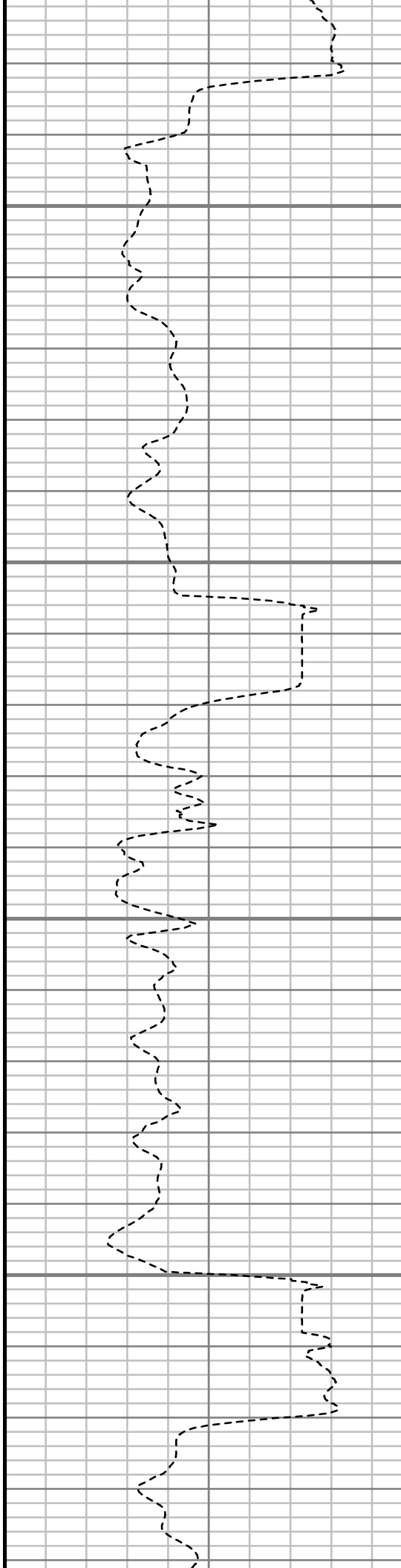


9600

9650

9700

9750

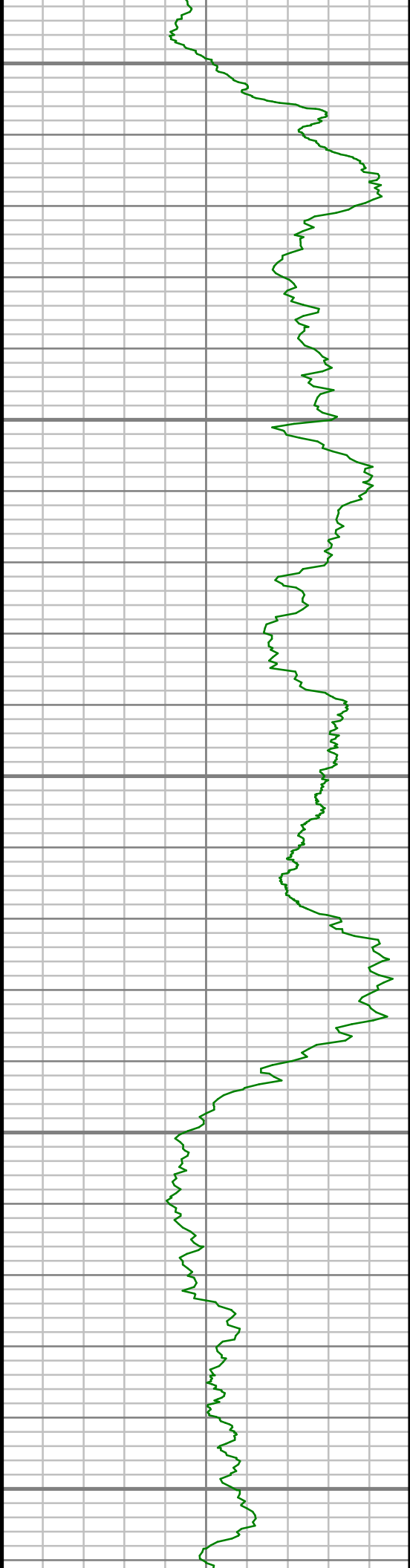


S: 73 MD: 9592.00 ft Inc: 90.17  
deg Az: 179.92 deg TVD:  
7044.56 ft

S: 74 MD: 9686.00 ft Inc: 89.26  
deg Az: 179.45 deg TVD:  
7045.02 ft

S: 75 MD: 9781.00 ft Inc: 89.23  
deg Az: 179.17 deg TVD:  
7046.27 ft





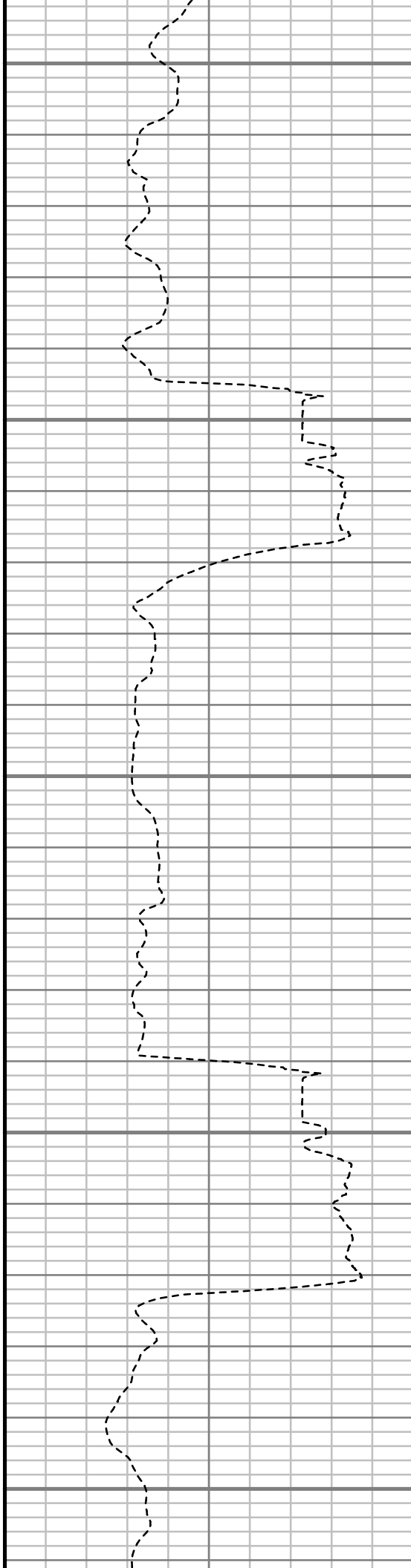
9800

9850

9900

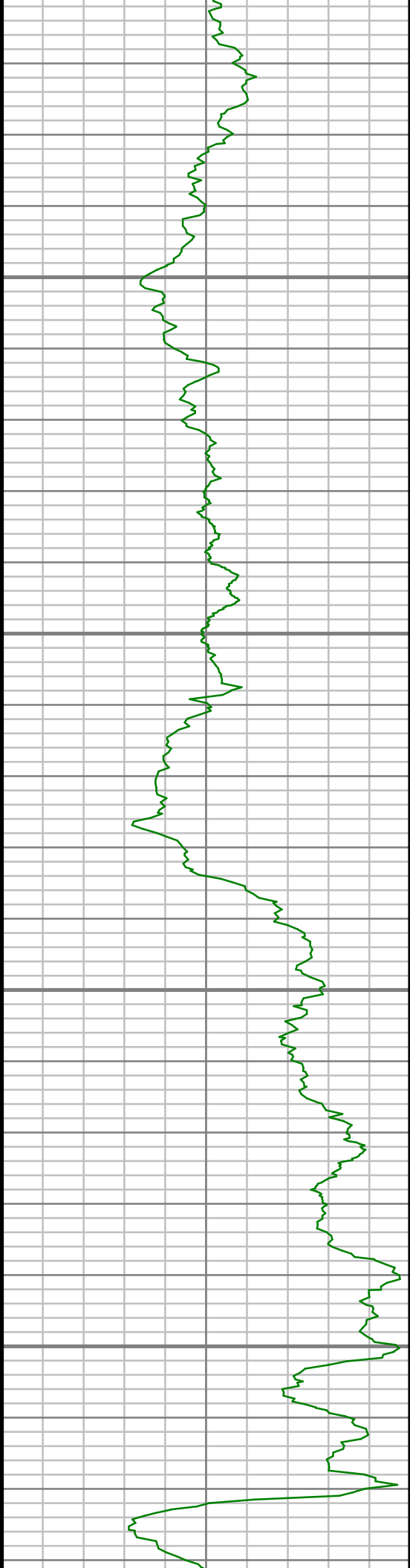
9950

10000



S: 76 MD: 9876.00 ft Inc: 89.26  
deg Az: 179.11 deg TVD:  
7047.53 ft

S: 77 MD: 9971.00 ft Inc: 90.54  
deg Az: 179.79 deg TVD:  
7047.69 ft



10050

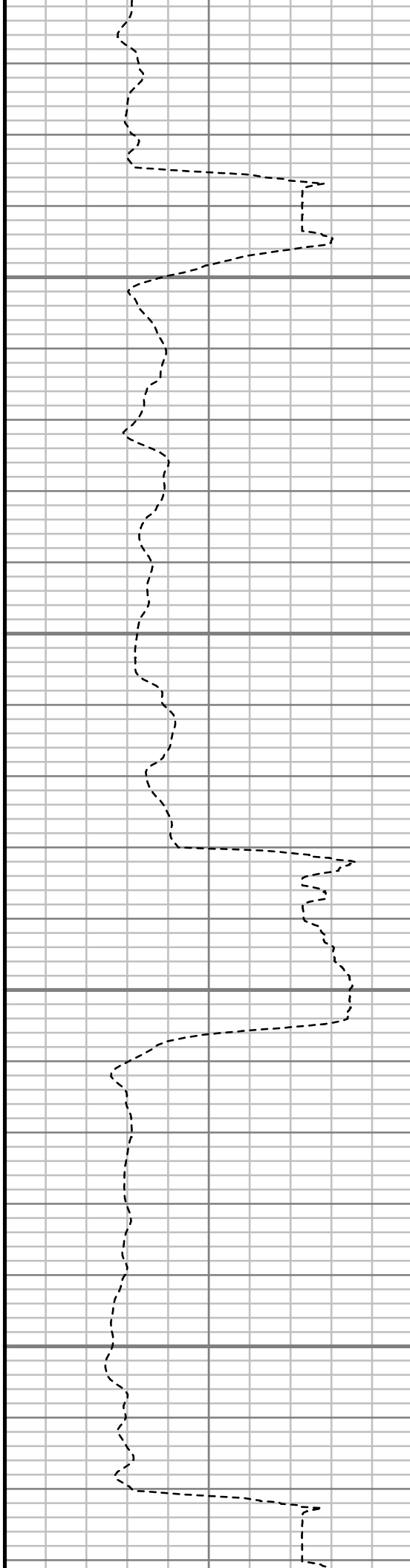
10100

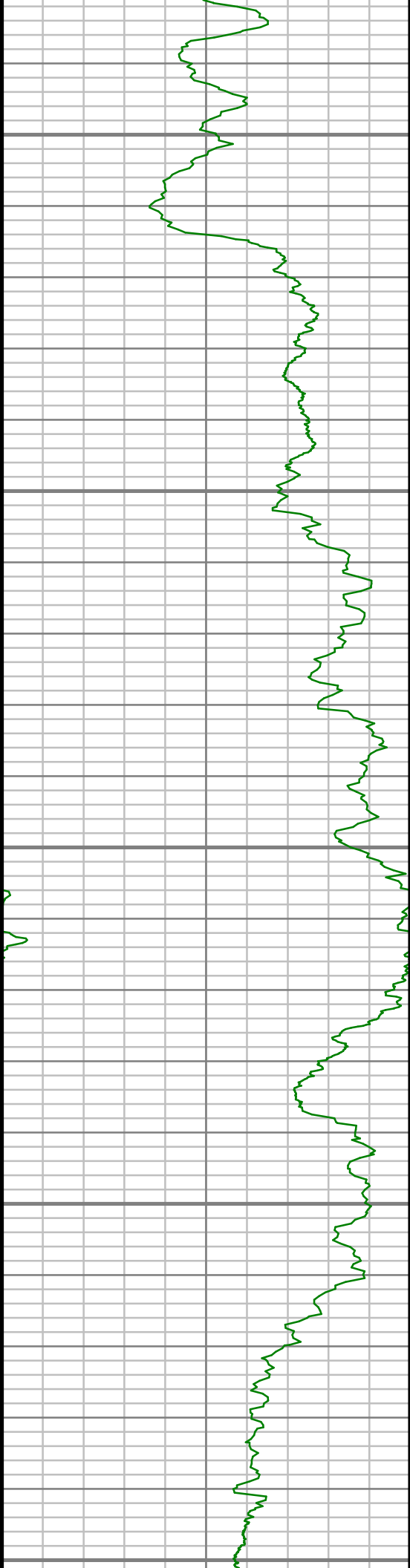
10150

10200

S: 78 MD: 10066.00 ft Inc:  
89.36 deg Az: 179.58 deg TVD:  
7047.78 ft

S: 79 MD: 10160.00 ft Inc:  
90.23 deg Az: 180.16 deg TVD:  
7048.11 ft





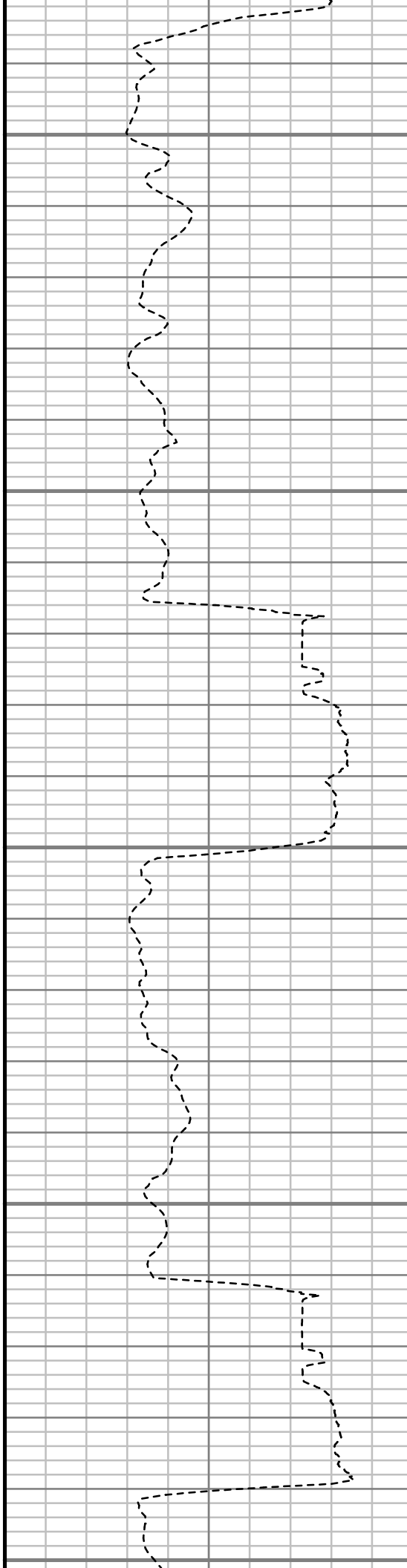
10250

10300

10350

10400

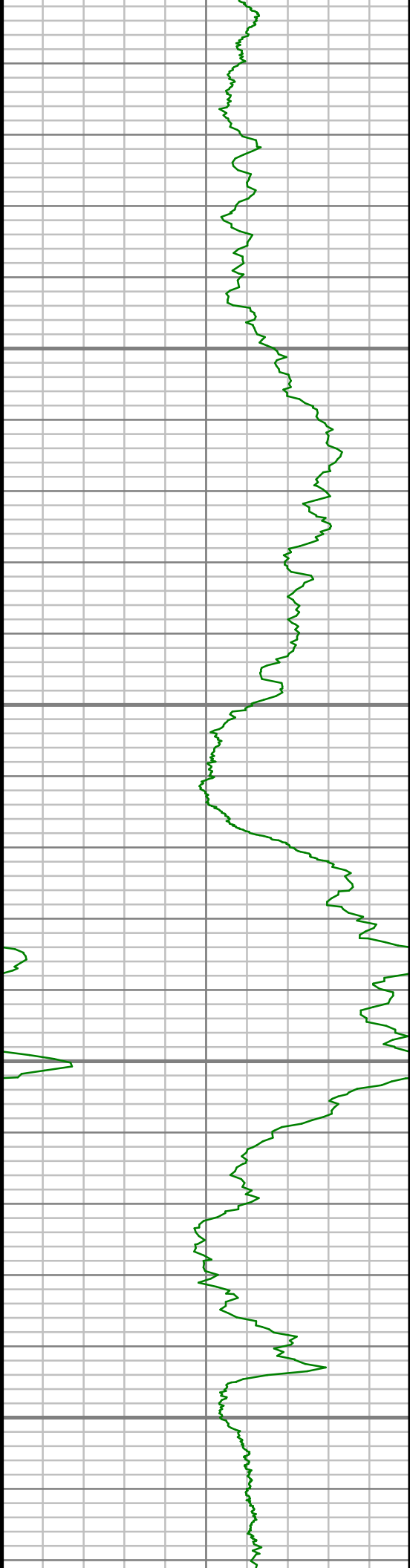
10450



S: 80 MD: 10255.00 ft Inc:  
88.56 deg Az: 180.81 deg TVD:  
7049.11 ft

S: 81 MD: 10350.00 ft Inc:  
89.77 deg Az: 179.46 deg TVD:  
7050.50 ft

S: 82 MD: 10444.00 ft Inc:  
90.74 deg Az: 179.61 deg TVD:  
7050.08 ft



10500

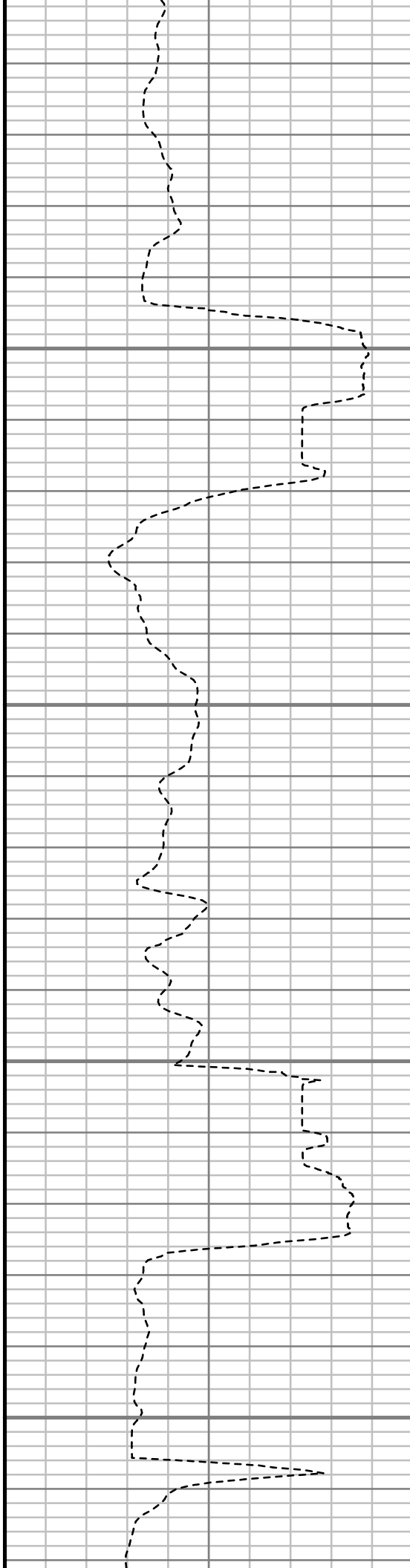
10550

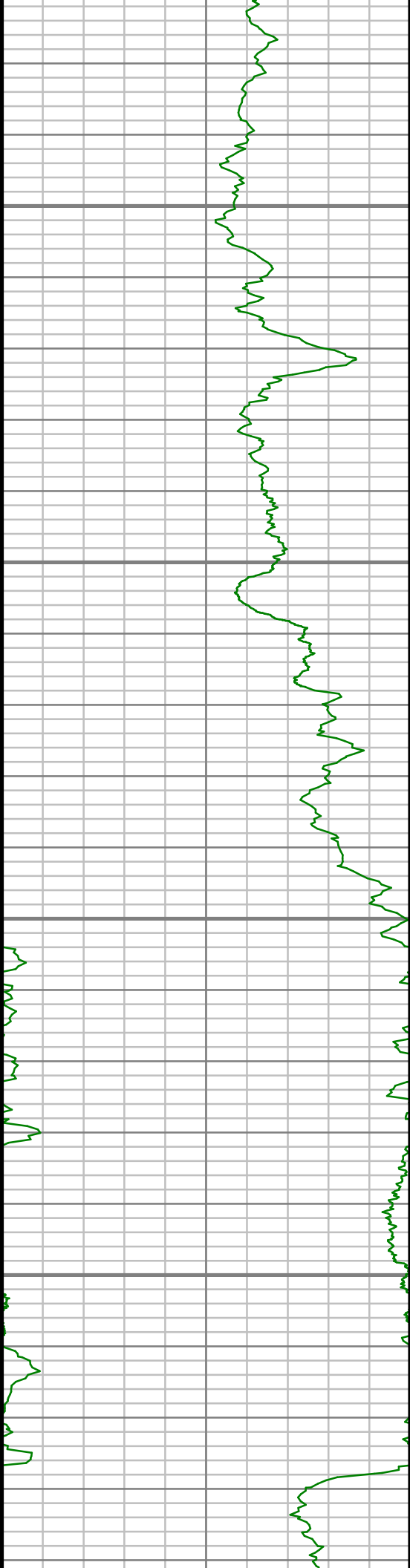
10600

10650

S: 83 MD: 10539.00 ft Inc:  
90.20 deg Az: 179.51 deg TVD:  
7049.31 ft

S: 84 MD: 10634.00 ft Inc:  
90.47 deg Az: 179.97 deg TVD:  
7048.75 ft





10700

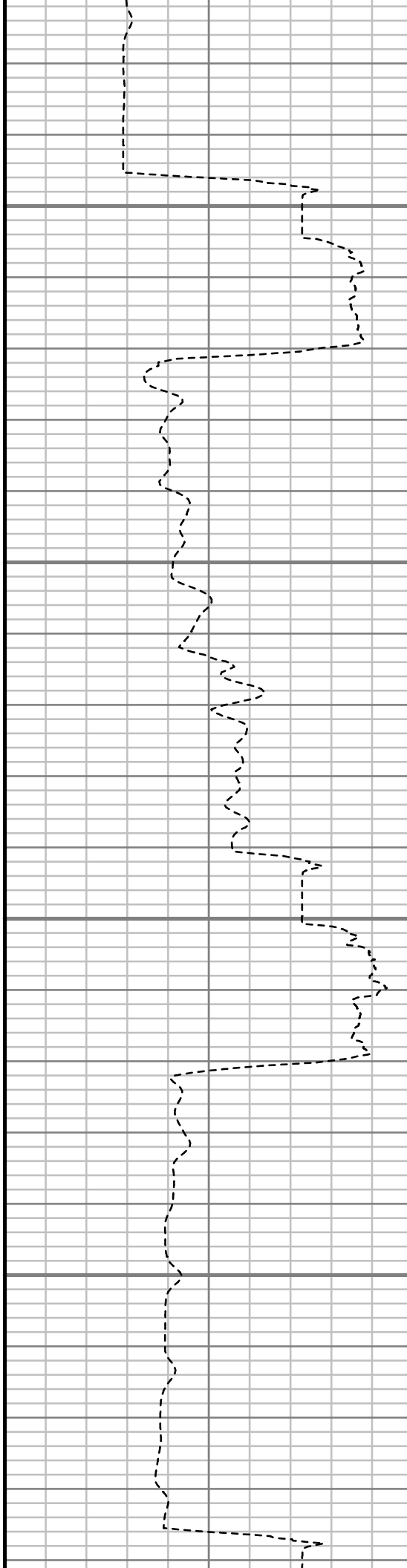
10750

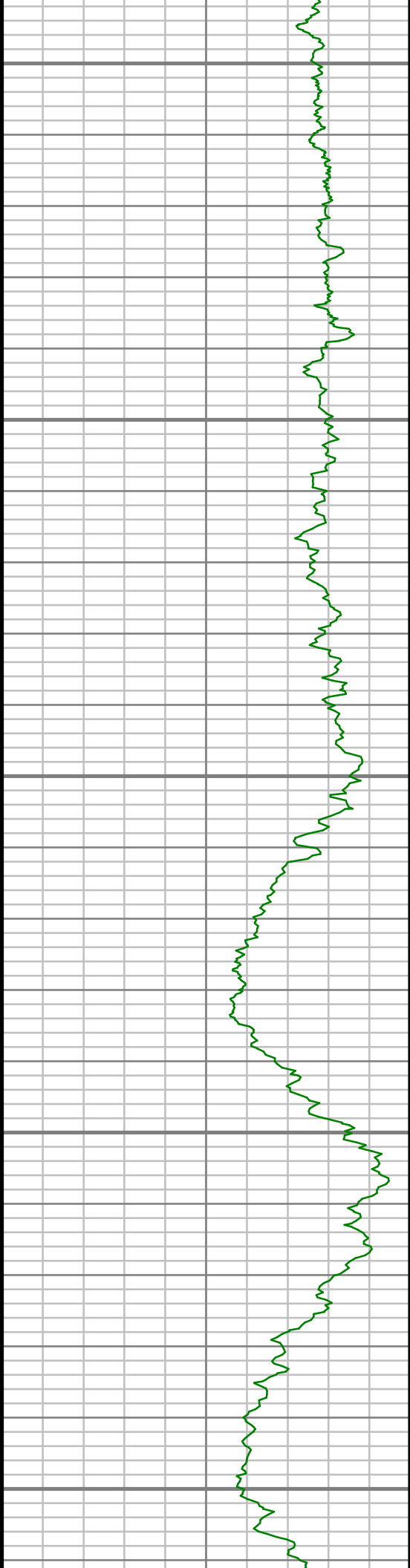
10800

10850

S: 85 MD: 10729.00 ft Inc:  
90.97 deg Az: 178.56 deg TVD:  
7047.55 ft

S: 86 MD: 10824.00 ft Inc:  
89.73 deg Az: 180.25 deg TVD:  
7046.97 ft





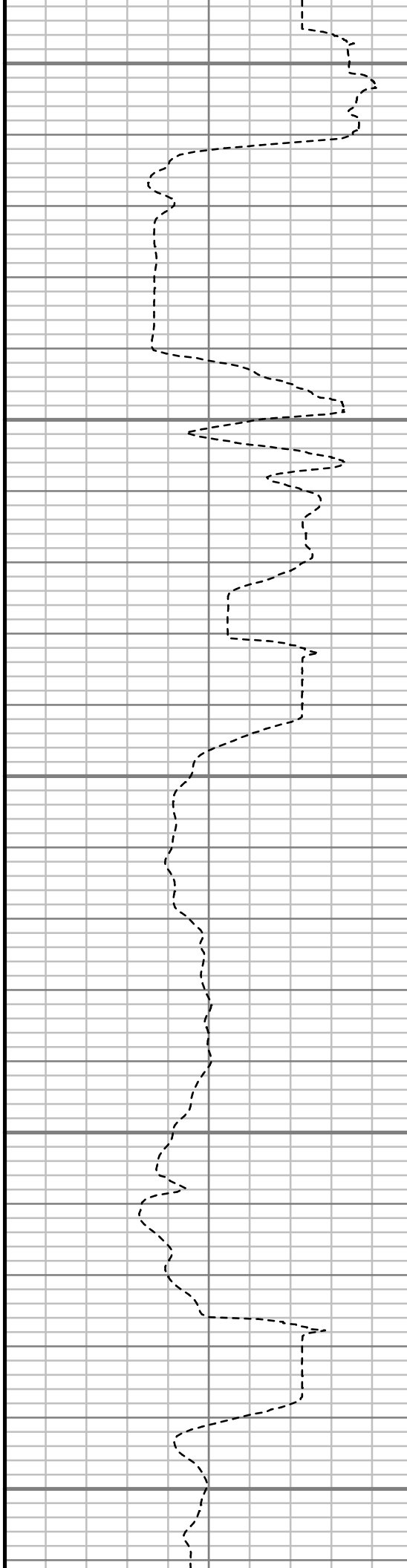
10900

10950

11000

11050

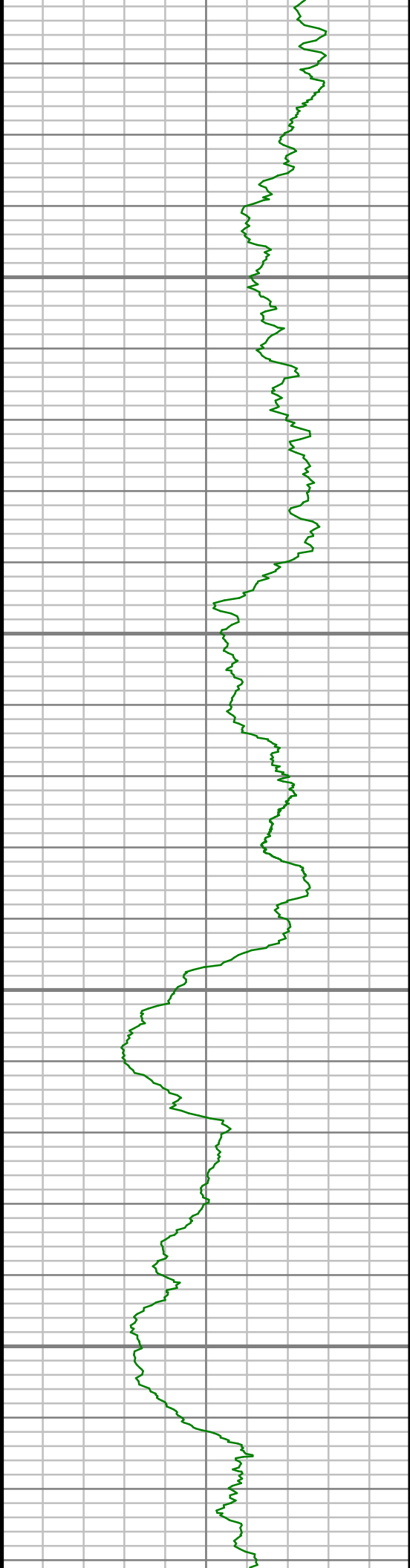
11100



S: 87 MD: 10919.00 ft Inc:  
91.34 deg Az: 179.86 deg TVD:  
7046.08 ft

S: 88 MD: 11013.00 ft Inc:  
91.61 deg Az: 180.68 deg TVD:  
7043.66 ft

S: 89 MD: 11108.00 ft Inc:

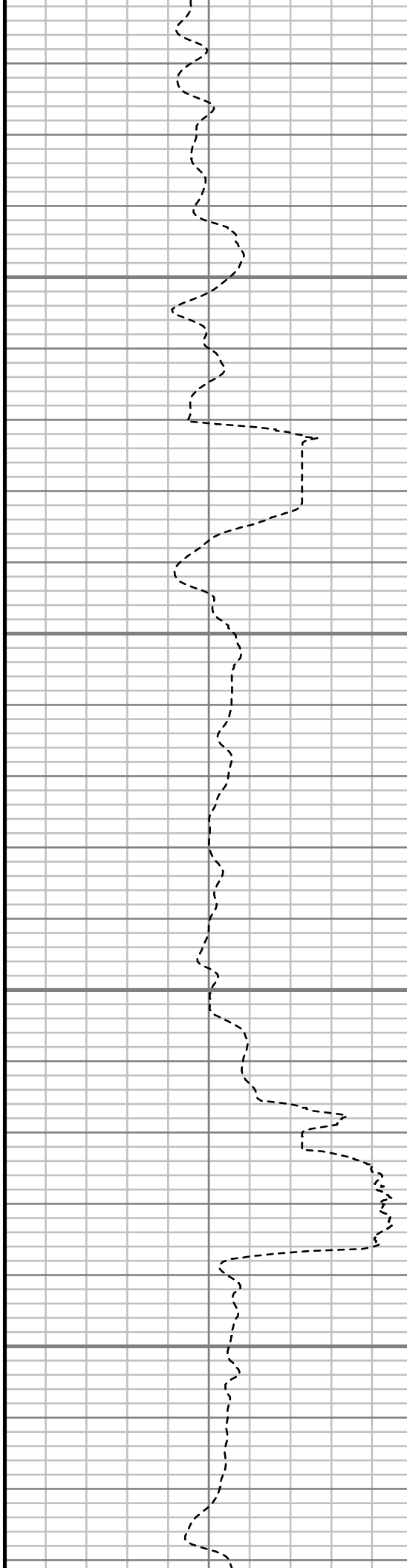


11150

11200

11250

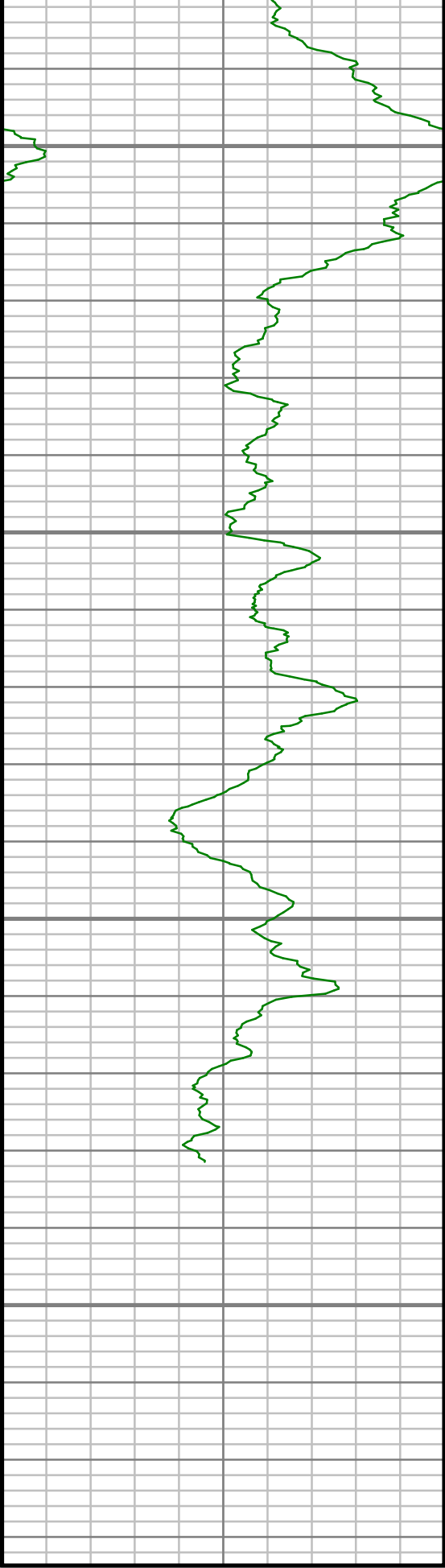
11300



90.57 deg Az: 180.57 deg IVD:  
7041.85 ft

S: 90 MD: 11203.00 ft Inc:  
89.60 deg Az: 179.79 deg TVD:  
7041.71 ft

S: 91 MD: 11297.00 ft Inc:  
90.00 deg Az: 179.96 deg TVD:  
7042.04 ft



Log Gamma Ray (GR)

0 Unit = aapi 150

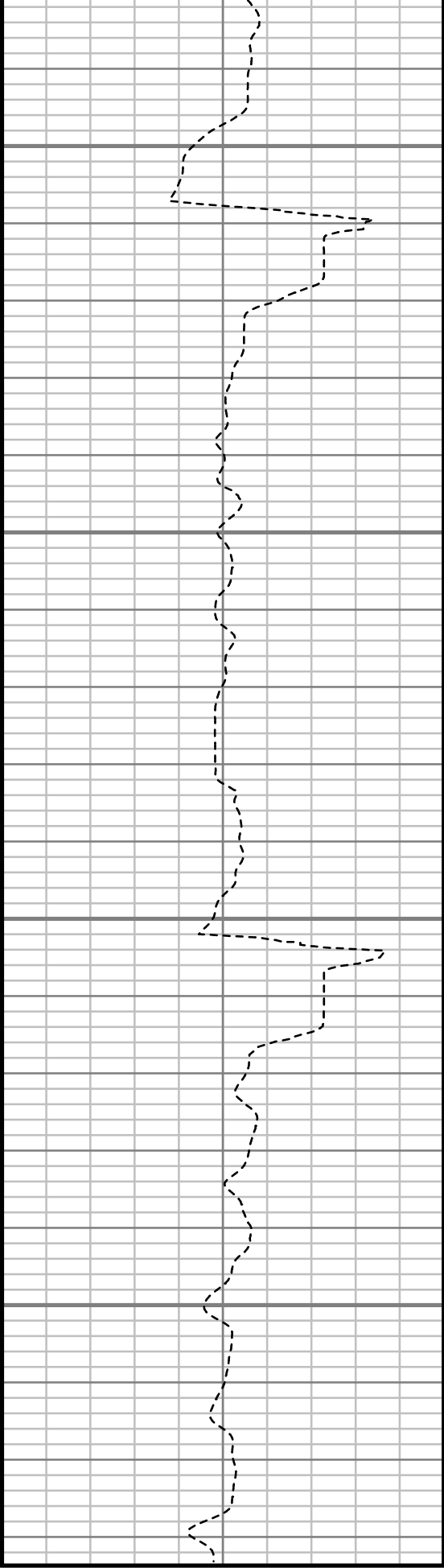
11350

11400

11450

11500

MEASURED DEPTH  
1:240 (ft)



Rate of Penetration (ROP)

550 Unit = ft/hr 0

S: 92 MD: 11392.00 ft Inc:  
89.23 deg Az: 179.60 deg TVD:  
7042.68 ft

S: 93 MD: 11471.00 ft Inc:  
88.49 deg Az: 179.49 deg TVD:  
7044.25 ft

Comments



--

二

--

--



## MWD Survey Report

Well Location	RUHL
Well Name	RUHL 1A-32H-B264
Survey Date	12/6/2014
Latitude	40°6'5.180"N
Longitude	104°34'25.468"W
Btotal	52494, 52514 nT
Dip	66.71 deg
Magnetic Declination	8.37 deg
North Reference	True North
Grid Correction	None
Depth Reference	RKB (25.00 ft)
Calculation Method	Minimum Curvature
Section (VS) Ref	0.00N (ft), 0.00E (ft), 180.00Azim (deg)
Operator(s)	C. WILSON, D. PADULA, J. GREGORY, S. WAXLER, T. PLUNK

### Well Notes

MD	Inc	Azim	TVD	VS	+N/-S	+E/-W	Closure Distance	Closure Direction	DLS
ft	deg	deg	ft	ft	ft	ft	ft	deg	"/100ft
0.00	0.00	0.00	0.00	0.00	0.00	0.00	0.00	0.00	Invalid
244.00	2.67	301.67	243.91	-2.99	2.99	-4.84	5.69	301.67	1.10
334.00	3.59	312.48	333.78	-5.99	5.99	-8.71	10.57	304.54	1.20
424.00	4.69	329.49	423.54	-11.06	11.06	-12.65	16.81	311.17	1.83
515.00	6.64	334.26	514.10	-19.01	19.01	-16.83	25.39	318.49	2.20
605.00	8.43	327.76	603.32	-29.28	29.28	-22.60	36.99	322.33	2.20
694.00	9.65	320.02	691.21	-40.51	40.51	-30.88	50.94	322.68	1.94
784.00	11.41	322.33	779.69	-53.34	53.34	-41.17	67.38	322.34	2.01
874.00	10.46	324.06	868.06	-67.00	67.00	-51.40	84.44	322.50	1.11
965.00	10.74	322.09	957.51	-80.38	80.38	-61.46	101.18	322.60	0.50
1057.00	11.13	319.23	1047.84	-93.86	93.86	-72.52	118.61	322.31	0.72
1151.00	10.09	318.05	1140.23	-106.85	106.85	-83.95	135.89	321.85	1.13
1276.00	10.15	321.62	1263.29	-123.64	123.64	-98.11	157.83	321.57	0.51
1459.00	10.14	319.51	1443.42	-148.53	148.53	-118.58	190.06	321.40	0.20
1640.00	10.36	320.70	1621.54	-173.24	173.24	-139.23	222.26	321.21	0.17
1821.00	10.81	320.00	1799.46	-198.84	198.84	-160.45	255.50	321.10	0.26
2002.00	10.02	317.26	1977.47	-223.41	223.41	-182.05	288.19	320.82	0.52
2183.00	5.55	316.33	2156.76	-241.31	241.31	-198.79	312.65	320.52	2.47
2366.00	3.28	320.28	2339.21	-251.73	251.73	-208.24	326.70	320.40	1.25

MD	Inc	Azim	TVD	VS	+N/-S	+E/-W	Closure Distance	Closure Direction	DLS
ft	deg	deg	ft	ft	ft	ft	ft	deg	°/100ft
2549.00	2.63	345.98	2521.97	-259.83	259.83	-212.59	335.72	320.71	0.80
2730.00	2.05	332.64	2702.82	-266.74	266.74	-215.09	342.66	321.12	0.44
2912.00	2.66	359.00	2884.67	-273.86	273.86	-216.66	349.20	321.65	0.68
3092.00	0.65	124.30	3064.61	-277.47	277.47	-215.89	351.56	322.11	1.71
3275.00	0.74	122.40	3247.60	-276.24	276.24	-214.03	349.45	322.23	0.05
3457.00	0.92	150.58	3429.58	-274.33	274.33	-212.31	346.89	322.26	0.24
3637.00	1.70	160.53	3609.53	-270.56	270.56	-210.71	342.93	322.09	0.45
3823.00	0.75	329.39	3795.51	-269.01	269.01	-210.41	341.53	321.97	1.31
4013.00	0.73	354.52	3985.49	-271.29	271.29	-211.16	343.79	322.10	0.17
4202.00	0.32	32.95	4174.49	-272.92	272.92	-211.00	344.97	322.29	0.27
4391.00	0.65	10.79	4363.48	-274.41	274.41	-210.51	345.85	322.51	0.20
4580.00	0.75	321.20	4552.47	-276.42	276.42	-211.09	347.80	322.63	0.31
4770.00	0.15	291.74	4742.46	-277.48	277.48	-212.10	349.26	322.61	0.33
4961.00	0.37	100.24	4933.46	-277.47	277.47	-211.72	349.02	322.65	0.27
5150.00	0.20	169.89	5122.46	-277.04	277.04	-211.06	348.28	322.70	0.19
5340.00	0.50	150.84	5312.45	-275.99	275.99	-210.60	347.17	322.65	0.17
5530.00	0.42	30.66	5502.45	-275.86	275.86	-209.84	346.60	322.74	0.42
5719.00	1.04	23.06	5691.43	-278.02	278.02	-208.82	347.71	323.09	0.33

MD	Inc	Azim	TVD	VS	+N/-S	+E/-W	Closure Distance	Closure Direction	DLS
ft	deg	deg	ft	ft	ft	ft	ft	deg	°/100ft
5909.00	1.82	231.15	5881.41	-277.71	277.71	-210.49	348.47	322.84	1.46
6099.00	1.63	246.89	6071.32	-274.76	274.76	-215.33	349.08	321.91	0.27
6289.00	1.32	221.12	6261.26	-272.05	272.05	-219.25	349.40	321.13	0.38
6383.00	4.98	170.95	6355.12	-267.20	267.20	-219.32	345.69	320.62	4.53
6478.00	12.08	170.49	6449.00	-253.30	253.30	-217.03	333.56	319.41	7.48
6573.00	19.72	174.21	6540.30	-227.51	227.51	-213.77	312.18	316.78	8.10
6668.00	26.69	177.93	6627.57	-190.20	190.20	-211.38	284.35	311.98	7.50
6763.00	32.77	177.16	6710.02	-143.15	143.15	-209.33	253.60	304.37	6.42
6858.00	39.94	178.80	6786.48	-86.91	86.91	-207.41	224.89	292.73	7.61
6952.00	52.43	178.52	6851.43	-19.23	19.23	-205.81	206.71	275.34	13.29
7047.00	60.34	176.29	6903.99	59.73	-59.73	-202.17	210.81	253.54	8.55
7142.00	64.49	174.59	6947.97	143.64	-143.64	-195.45	242.56	233.69	4.64
7235.00	70.63	180.60	6983.49	229.43	-229.43	-191.95	299.14	219.92	8.91
7330.00	74.90	181.25	7011.62	320.13	-320.13	-193.42	374.03	211.14	4.54
7425.00	81.25	182.21	7031.24	412.99	-412.99	-196.24	457.24	205.42	6.75
7607.00	88.86	182.05	7046.93	594.06	-594.06	-202.97	627.77	198.86	4.18
7698.00	90.03	180.30	7047.81	685.03	-685.03	-204.83	715.00	196.65	2.32
7793.00	91.44	180.96	7046.58	780.01	-780.01	-205.87	806.72	194.79	1.64

MD	Inc	Azim	TVD	VS	+N/-S	+E/-W	Closure Distance	Closure Direction	DLS
ft	deg	deg	ft	ft	ft	ft	ft	deg	°/100ft
7887.00	90.37	180.44	7045.10	873.99	-873.99	-207.02	898.17	193.33	1.27
7982.00	90.10	179.65	7044.71	968.99	-968.99	-207.09	990.87	192.06	0.87
8077.00	88.22	179.56	7046.10	1063.97	-1063.97	-206.45	1083.82	190.98	1.98
8172.00	88.93	179.88	7048.47	1158.94	-1158.94	-205.98	1177.10	190.08	0.82
8266.00	89.97	181.14	7049.37	1252.93	-1252.93	-206.82	1269.89	189.37	1.74
8361.00	90.13	180.93	7049.29	1347.91	-1347.91	-208.54	1363.95	188.79	0.28
8456.00	89.87	181.63	7049.29	1442.89	-1442.89	-210.66	1458.19	188.31	0.78
8550.00	90.81	181.12	7048.74	1536.86	-1536.86	-212.91	1551.54	187.89	1.14
8645.00	91.74	181.57	7046.62	1631.81	-1631.81	-215.15	1645.93	187.51	1.10
8739.00	91.17	182.95	7044.23	1725.70	-1725.70	-218.86	1739.52	187.23	1.59
8834.00	89.97	180.44	7043.29	1820.65	-1820.65	-221.66	1834.09	186.94	2.94
8928.00	89.43	179.31	7043.78	1914.64	-1914.64	-221.46	1927.41	186.60	1.32
9023.00	89.50	179.52	7044.67	2009.63	-2009.63	-220.49	2021.69	186.26	0.23
9118.00	89.46	180.17	7045.53	2104.63	-2104.63	-220.23	2116.12	185.97	0.68
9213.00	90.34	180.33	7045.70	2199.63	-2199.63	-220.64	2210.67	185.73	0.93
9307.00	89.06	181.94	7046.20	2293.60	-2293.60	-222.50	2304.37	185.54	2.18
9402.00	90.40	181.03	7046.64	2388.57	-2388.57	-224.97	2399.14	185.38	1.70
9497.00	90.97	180.66	7045.50	2483.55	-2483.55	-226.37	2493.84	185.21	0.72

MD	Inc	Azim	TVD	VS	+N/-S	+E/-W	Closure Distance	Closure Direction	DLS
ft	deg	deg	ft	ft	ft	ft	ft	deg	°/100ft
9592.00	90.17	179.92	7044.56	2578.54	-2578.54	-226.84	2588.50	185.03	1.15
9686.00	89.26	179.45	7045.02	2672.54	-2672.54	-226.32	2682.10	184.84	1.08
9781.00	89.23	179.17	7046.27	2767.52	-2767.52	-225.18	2776.67	184.65	0.31
9876.00	89.26	179.11	7047.53	2862.50	-2862.50	-223.75	2871.24	184.47	0.07
9971.00	90.54	179.79	7047.69	2957.50	-2957.50	-222.84	2965.88	184.31	1.52
10066.00	89.36	179.58	7047.78	3052.49	-3052.49	-222.31	3060.58	184.17	1.25
10160.00	90.23	180.16	7048.11	3146.49	-3146.49	-222.10	3154.32	184.04	1.11
10255.00	88.56	180.81	7049.11	3241.48	-3241.48	-222.90	3249.13	183.93	1.89
10350.00	89.77	179.46	7050.50	3336.46	-3336.46	-223.12	3343.92	183.83	1.91
10444.00	90.74	179.61	7050.08	3430.46	-3430.46	-222.35	3437.66	183.71	1.05
10539.00	90.20	179.51	7049.31	3525.45	-3525.45	-221.62	3532.41	183.60	0.57
10634.00	90.47	179.97	7048.75	3620.45	-3620.45	-221.18	3627.20	183.50	0.56
10729.00	90.97	178.56	7047.55	3715.43	-3715.43	-219.96	3721.94	183.39	1.58
10824.00	89.73	180.25	7046.97	3810.42	-3810.42	-218.97	3816.71	183.29	2.21
10919.00	91.34	179.86	7046.08	3905.41	-3905.41	-219.06	3911.55	183.21	1.75
11013.00	91.61	180.68	7043.66	3999.38	-3999.38	-219.50	4005.40	183.14	0.92
11108.00	90.57	180.57	7041.85	4094.35	-4094.35	-220.54	4100.29	183.08	1.10
11203.00	89.60	179.79	7041.71	4189.35	-4189.35	-220.84	4195.17	183.02	1.31

MD	Inc	Azim	TVD	VS	+N/-S	+E/-W	Closure Distance	Closure Direction	DLS
ft	deg	deg	ft	ft	ft	ft	ft	deg	°/100ft
11297.00	90.00	179.96	7042.04	4283.35	-4283.35	-220.64	4289.03	182.95	0.46
11392.00	89.23	179.60	7042.68	4378.35	-4378.35	-220.28	4383.88	182.88	0.90
11471.00	88.49	179.49	7044.25	4457.33	-4457.33	-219.65	4462.74	182.82	0.94

MD	Inc	Azim	TVD	VS	+N/-S	+E/-W	Closure Distance	Closure Direction	DLS
ft	deg	deg	ft	ft	ft	ft	ft	deg	°/100ft

5" = 100' FEET MD