

# HALLIBURTON

iCem® Service

## WHITING OIL & GAS CORP - EBUS

**For:**

Date: Tuesday, March 17, 2015

**RAZOR 11 H-0215A**

Case 1

Job Date: Monday, March 16, 2015

Sincerely,

The Road to Excellence Starts with Safety

Sold To #: 366960	Ship To #: 3272088	Quote #: 0022017515	Sales Order #: 0902220649
Customer: WHITING OIL & GAS CORP - EBUS		Customer Rep: TYSON	
Well Name: RAZOR	Well #: 11 H-0215A	API/UWI #: 05-123-38598-00	
Field: WILDCAT	City (SAP): RAYMER	County/Parish: WELD	State: COLORADO
Legal Description: SE NE-11-10N-58W-2180FNL-368FEL			
Contractor: FRONTIER DRLG		Rig/Platform Name/Num: FRONTIER 26	
Job BOM: 7522			
Well Type: HORIZONTAL OIL			
Sales Person: HALAMERICA/HX41066		Srv Supervisor: Joseph Scileppi	
Job			

Formation Name			
Formation Depth (MD)	Top		Bottom
Form Type			BHST 225 degF
Job depth MD	6297ft		Job Depth TVD
Water Depth			Wk Ht Above Floor
Perforation Depth (MD)	From		To

Well Data										
Description	New / Used	Size in	ID in	Weight lbm/ft	Thread	Grade	Top MD ft	Bottom MD ft	Top TVD ft	Bottom TVD ft
Casing	0	9.625	8.921	36	LTC	J-55	0	1841		
Casing	0	7	6.184	26	LTC	L-80	0	6277		
Open Hole Section			8.75				1800	6297		

Tools and Accessories									
Type	Size in	Qty	Make	Depth ft		Type	Size in	Qty	Make
Guide Shoe	7			6277		Top Plug	7		HES
Float Shoe	7					Bottom Plug	7		HES
Float Collar	7					SSR plug set	7		HES
Insert Float	7					Plug Container	7		HES
Stage Tool	7					Centralizers	7		HES

Miscellaneous Materials											
Gelling Agt		Conc		Surfactant		Conc		Acid Type		Qty	Conc
Treatment Fld		Conc		Inhibitor		Conc		Sand Type		Size	Qty

Fluid Data										
Stage/Plug #: 1										
Fluid #	Stage Type	Fluid Name	Qty	Qty UoM	Mixing Density lbm/gal	Yield ft <sup>3</sup> /sack	Mix Fluid Gal	Rate bbl/min	Total Mix Fluid Gal	
1	10.5 lb/gal Tuned Spacer III	Tuned Spacer III	20	bbl	10.5	6.17		6		
37.58 gal/bbl		FRESH WATER								
91 lbm/bbl		BARITE, BULK (100003681)								



Fluid #	Stage Type	Fluid Name	Qty	Qty UoM	Mixing Density lbm/gal	Yield ft <sup>3</sup> /sack	Mix Fluid Gal	Rate bbl/min	Total Mix Fluid Gal
2	Lead Cement	ECONOCEM (TM) SYSTEM	425	sack	12.8	1.89		6	9.99
9.99 Gal		FRESH WATER							
0.55 %		HR-5, 50 LB SK (100005050)							
Fluid #	Stage Type	Fluid Name	Qty	Qty UoM	Mixing Density lbm/gal	Yield ft <sup>3</sup> /sack	Mix Fluid Gal	Rate bbl/min	Total Mix Fluid Gal
3	Tail Cement	EXPANDACEM (TM) SYSTEM	165	sack	13.8	1.67		6	7.73
0.10 %		HR-5, 50 LB SK (100005050)							
7.73 Gal		FRESH WATER							
Fluid #	Stage Type	Fluid Name	Qty	Qty UoM	Mixing Density lbm/gal	Yield ft <sup>3</sup> /sack	Mix Fluid Gal	Rate bbl/min	Total Mix Fluid Gal
4	Displacement	Displacement	238.9	bbl	8.33				
Cement Left In Pipe		Amount	42 ft	Reason				Shoe Joint	
Mix Water: pH ##		Mix Water Chloride: ## ppm				Mix Water Temperature: ## °F °C			
Cement Temperature: ## °F °C		Plug Displaced by: ## lb/gal kg/m <sup>3</sup> XXXX				Disp. Temperature: ## °F °C			
Plug Bumped? Yes/No		Bump Pressure: ##### psi MPa				Floats Held? Yes/No			
Cement Returns: ## bbl m <sup>3</sup>		Returns Density: ## lb/gal kg/m <sup>3</sup>				Returns Temperature: ## °F °C			
Comment									

## Summary Report



Sales Order #: 0902220649  
WO #: 0902220649  
PO/AFE #: NA

Crew: \_\_\_\_\_

Job Start Date: 3/16/2015

Customer: WHITING OIL & GAS CORP -  
EBUS  
UWI / API Number: 05-123-38598-00  
Well Name: RAZOR  
Well No: 11 H-0215A

Field: WILDCAT  
County/Parish: WELD  
State: COLORADO  
Latitude: 40.854661  
Longitude: -103.824558  
Sect / Twn / Rng: 11/10/58

Job Type: CMT INTERMEDIATE  
CASING BOM  
Service Supervisor: Joseph Scileppi  
Cust Rep Name: TYSON  
Cust Rep Phone #:

## Remarks:

The Information Stated Herein Is Correct

Customer Representative Signature

Date

Customer Representative Printed Name

## 1.0 Real-Time Job Summary

### 1.1 Job Event Log

Type	Seq. No.	Activity	Graph Label	Date	Time	Source	Comb Pump Rate (bbl/min)	DH Density (ppg)	PS Pump Press (psi)	Recirc Density (ppg)	Comments
Event	1	Call Out	Call Out	3/16/2015	11:00:00	USER					
Event	2	Crew Leave Yard	Crew Leave Yard	3/16/2015	13:30:00	USER					PRE JOURNEY JSA W/ CREW
Event	3	Arrive At Loc	Arrive At Loc	3/16/2015	15:45:00	USER					RIG STILL HAD 35 JOINTS TO RUN UPON ARRIVAL
Event	4	Rig-up Lines	Rig-up Lines	3/16/2015	20:30:00	USER	0.00	0.00	70.00	0.00	PRE RIG UP JSA W/ CREW
Event	5	Rig-Up Completed	Rig-Up Completed	3/16/2015	21:50:00	USER	0.00	8.49	13.00	0.00	
Event	6	Pre-Job Safety Meeting	Pre-Job Safety Meeting	3/16/2015	22:00:00	USER	0.00	8.50	14.00	0.00	JSA W/ ALL INVOLVED PERSONNEL
Event	7	Start Job	Start Job	3/16/2015	22:16:51	COM5	0.00	8.49	16.00	8.32	PUMPED 20 BBL5 10.5 TUNED SPACER AT 3.5 BPM AT 418 PSI
Event	8	Pump Spacer	Pump Spacer	3/16/2015	22:25:00	USER	0.00	8.58	4174.00	10.79	
Event	9	Check Weight	Check weight	3/16/2015	22:40:36	COM5	0.00	10.74	38.00	12.59	PUMPED 425 SKS OR 143 BBL5 OF 12.7 ECONOCEM AT 5 BPM AT 910 PSI
Event	10	Pump Lead Cement	Pump Lead Cement	3/16/2015	22:43:45	COM5	0.00	10.73	37.00	12.61	
Event	11	Check Weight	Check weight	3/16/2015	23:00:29	COM5	5.20	12.69	1934.00	12.72	
Event	12	Check Weight	Check weight	3/16/2015	23:09:58	COM5	5.00	12.66	1517.00	12.65	TESTED LINES TO 4000 PSI FOR 5 MIN, NO VISIBLE LEAKS
Event	13	Test Lines	Test Lines	3/16/2015	23:11:58	COM5	4.80	12.65	1210.00	12.72	
Event	14	Pump Tail Cement	Pump Tail Cement	3/16/2015	23:19:37	COM5	2.80	13.15	659.00	14.09	PUMPED 165 SKS OR 49 BBL5 OF 13.8 EXPANDCEM AT 5.5 BPM AT 1410 PSI



# HALIBURTON

Customer: WHITTING OIL & GAS CORP - EBUS

Job: 9022220649

Case: Case 1

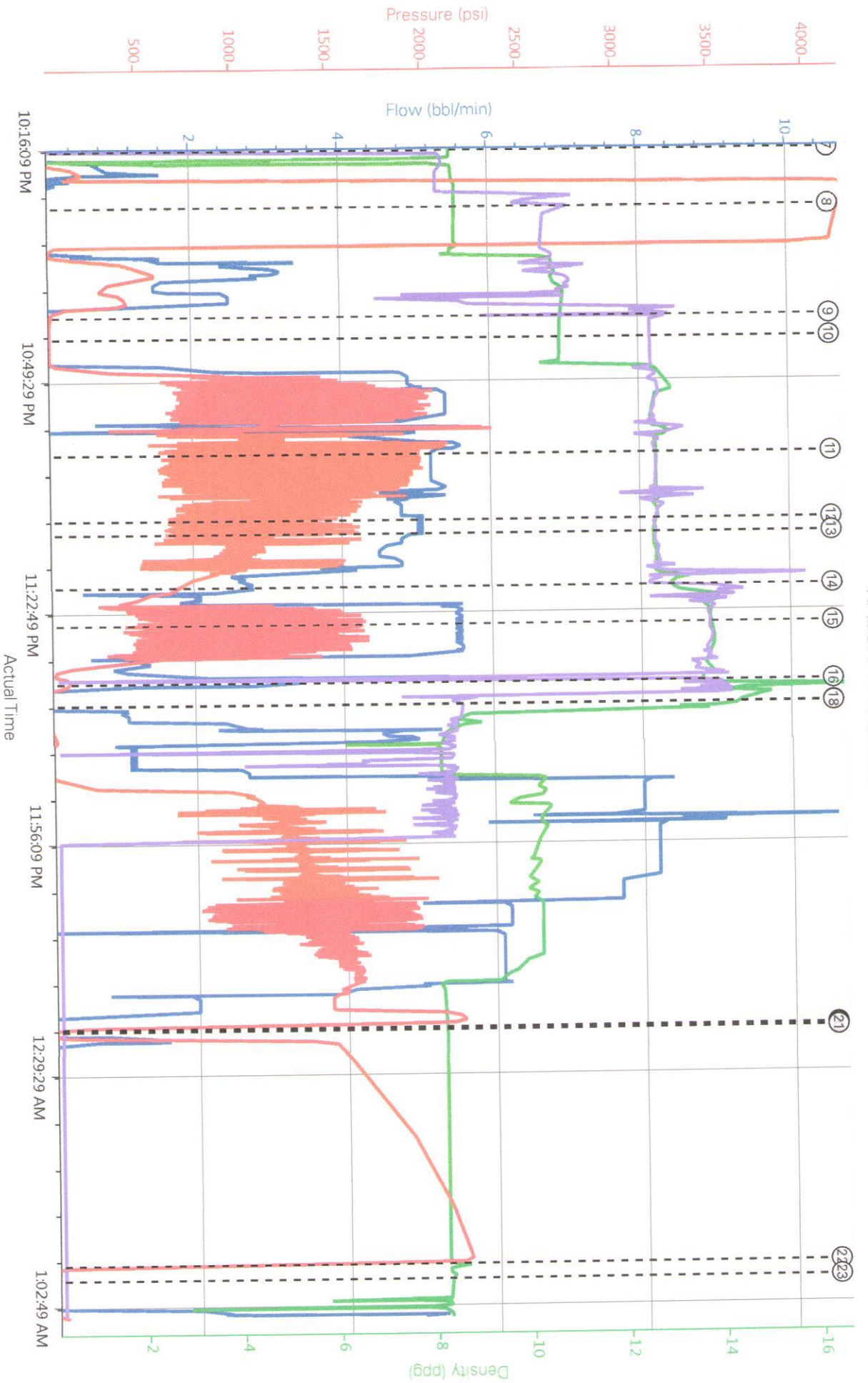
Event	15	Check Weight	Check weight	3/16/2015	23:25:03	COM5	5.60	13.77	508.00	13.75	
Event	16	Shutdown	Shutdown	3/16/2015	23:33:24	COM5	0.00	13.96	79.00	13.72	
Event	17	Drop Top Plug	Drop Top Plug	3/16/2015	23:36:32	COM5	0.00	14.30	9.00	8.63	PLUG PRE LOADED AND WITNESSED BY DRILLER
Event	18	Pump Displacement	Pump Displacement	3/16/2015	23:36:36	COM5	0.00	14.29	9.00	8.61	PUMPED 238.9 BBL5 10.3 WBM AT 8 BPM AT 1427 PSI, RETURNED SLOWED DRAMATICALLY AT 100 BBL5 AWAY AND PICKED BACK UP AT 185 BBL5 AWAY, WE NEVER TOTALLY LOST RETURNS BUT THEY WERE COMING BACK MUCH SLOWER THAN WE WERE PUMPING, PRESSURE WAS BOUNCING BACK AND FORTH BETWEEN 1100 AND 1850 DURING THIS PERIOD, NO CMT OR SPACER BACK TO SURFACE
Event	19	Bump Plug	Bump Plug	3/17/2015	00:23:08	COM5	0.00	8.23	9.00	0.24	BUMPED PLUG AT CALCULATED (238.9) BBL5, GOT 1.5 BBL5 BACK TO TRUCK
Event	20	Other	Other	3/17/2015	00:23:21	COM5	0.00	8.23	6.00	0.24	FLOATS HEID GOT 1.5 BBL5 BACK TO TRUCK
Event	21	Pressure Up Well	Pressure Up Well	3/17/2015	00:23:32	COM5					1500 PSI CASING TEST FOR 30 MIN, PRESSURE WAS AT 2190 BEFORE BEING RELEASED
Event	22	End Job	End Job	3/17/2015	00:57:23	COM5	0.00	8.22	38.00	0.24	
Event	23	End Job	End Job	3/17/2015	00:59:32	USER	0.00	8.28	7.00	0.24	

iCem Service

(v. 4.1.107)

Created: Tuesday, March 17, 2015

# RAZOR 11 H-0215A



- ① Call Out n/a; n/a; n/a; n/a
- ② Crew Leave Yard n/a; n/a; n/a; n/a
- ③ Arrive At Loc n/a; n/a; n/a; n/a
- ④ Rig-up Lines 0;0;70;0
- ⑤ Rig-Up Completed 0;8;49;13;0
- ⑥ Pre-Job Safety Meeting 0;8;5;14;0
- ⑦ Start Job 0;8;49;16;8;32
- ⑧ Pump Spacer 0;8;58;4174;10;79
- ⑨ Check weight 0;10;74;38;12;59
- ⑩ Pump Lead Cement 0;10;73;37;12;61
- ⑪ Check weight 5;
- ⑫ Check weight 5;

**HALLIBURTON ENERGY  
SERVICES**

---

**M. S. D. S. RECEIPT DOCUMENT**

This receipt page is intended for use with Material Safety Data Sheets supplied by Halliburton Energy Services. The recipients of these data sheets should consult the OSHA Safety and Health Standards (29 CFR 1910), particularly subpart G - Occupational Health and Environmental Control, and subpart I - Personal Protective Equipment, for general guidance on control of potential Occupational Health and Safety Hazards.

This document provides the customer the instructions necessary to utilize the M. S. D. S. Safety Sheets and confirms that Halliburton Energy Services offers the Customer the communication for discussion on Chemical Safety of the provided materials.

---

Customer Signature

Company :	<u>WHITING OIL &amp; GAS CORP - EBUS</u>
Lease & Well Name :	<u>RAZOR</u>
Ticket # :	<u>0902220649</u>
Location : (To be completed by Service Supervisor)	<u>Fort Lupton, CO, USA(0201)</u>