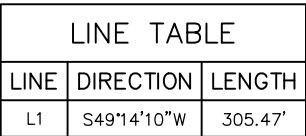


T6N, R62W, 6th P.M.

● = PROPOSED WELLHEAD.
 ◆ = LANDING POINT.
 ○ = TARGET BOTTOM HOLE.
 ▲ = SECTION CORNERS
 LOCATED.



CERTIFICATE

THIS IS TO CERTIFY THAT THE ABOVE PLAT WAS PREPARED FROM FIELD NOTES OF ACTUAL SURVEYS MADE BY ME OR UNDER MY SUPERVISION AND THAT THE SAME ARE TRUE AND CORRECT TO THE BEST OF MY KNOWLEDGE AND BELIEF.

REGISTERED LAND SURVEYOR

REGISTRATION NO. 28285
STATE OF COLORADO

03-02-1

BASIS OF BEARINGS IS A G.P.S. OBSERVATION

SPOT ELEVATION LOCATED AT THE NORTHEAST CORNER OF SECTION 24, T5N, R62W, 6th P.M. TAKEN FROM THE POINT OF ROCKS, QUADRANGLE, COLORADO, WELD COUNTY, 7.5 MINUTE QUAD (TOPOGRAPHIC MAP) PUBLISHED BY THE UNITED STATES DEPARTMENT OF THE INTERIOR, GEOLOGICAL SURVEY. SAID ELEVATION IS MARKED AS BEING 4530 FEET.



**HEATH 6-62-15 22 NENE PAD #6-62-15-0758BH2
NE 1/4 NE 1/4, SECTION 15, T6N, R62W, 6th P.M.
WELD COUNTY, COLORADO**

WELL LOCATION PLAT



UELS, LLC
Corporate Office * 85 South 200 East
Vernal, UT 84078 * (435) 789-1017