



Noble Energy, Inc

Weld County, CO (NAD 83)

Sec 36, T6N R63W (Wells Ranch AA35)

Wells Ranch AA35-62-1AHNC

Wellbore #1

Design: OH

Standard Survey Report

15 May, 2014





IDS Survey Report



Company:	Noble Energy, Inc	Local Co-ordinate Reference:	Well Wells Ranch AA35-62-1AHNC
Project:	Weld County, CO (NAD 83)	TVD Reference:	Well @ 4764.0usft (H&P 277)
Site:	Sec 36, T6N R63W (Wells Ranch AA35)	MD Reference:	Well @ 4764.0usft (H&P 277)
Well:	Wells Ranch AA35-62-1AHNC	North Reference:	Grid
Wellbore:	Wellbore #1	Survey Calculation Method:	Minimum Curvature
Design:	OH	Database:	EDM 5000.1 Single User Db

Project	Weld County, CO (NAD 83)		
Map System:	US State Plane 1983	System Datum:	Mean Sea Level
Geo Datum:	North American Datum 1983		
Map Zone:	Colorado Northern Zone		

Site		Sec 36, T6N R63W (Wells Ranch AA35)			
Site Position:		Northing:	1,404,137.44 usft	Latitude:	40° 26' 14.964 N
From:	Lat/Long	Easting:	3,307,823.52 usft	Longitude:	104° 23' 38.796 W
Position Uncertainty:	0.0 usft	Slot Radius:	13-3/16 "	Grid Convergence:	0.71 °

Well	Wells Ranch AA35-62-1AHNC					
Well Position	+N-S	0.0 usft	Northing:	1,404,137.42 usft	Latitude:	40° 26' 14.964 N
	+E-W	0.0 usft	Easting:	3,307,823.52 usft	Longitude:	104° 23' 38.796 W
Position Uncertainty		0.0 usft	Wellhead Elevation:	0.0 usft	Ground Level:	4,740.0 usft

Wellbore	Wellbore #1				
Magnetics	Model Name	Sample Date	Declination (°)	Dip Angle (°)	Field Strength (nT)
	IGRF2010	1/23/2014	8.31	67.05	52,915

Design	OH				
Audit Notes:					
Version:	1.0	Phase:	ACTUAL	Tie On Depth:	0.0
Vertical Section:	Depth From (TVD) (usft)	+N-S (usft)	+E-W (usft)	Direction (°)	
	0.0	0.0	0.0	267.22	

Survey Program	Date	5/15/2014			
From (usft)	To (usft)	Survey (Wellbore)	Tool Name	Description	
273.0	585.0	ESS Surface Surveys (Wellbore #1)	EMS	EMS - Standard	
647.0	6,898.0	MWD Intermediate Surveys (Wellbore #1)	MWD	MWD - Standard	
7,029.0	11,091.0	MWD IFR Lateral Surveys (Wellbore #1)	Sperry - MWD+IFR1+MS_	Fixed:v2:Rockies, crustal dec + 3-axis correction	

Survey									
Measured Depth (usft)	Inclination (°)	Azimuth (°)	Vertical Depth (usft)	+N-S (usft)	+E-W (usft)	Vertical Section (usft)	Dogleg Rate (°/100usft)	Build Rate (°/100usft)	Turn Rate (°/100usft)
0.0	0.00	0.00	0.0	0.0	0.0	0.0	0.00	0.00	0.00
273.0	0.60	217.82	273.0	-1.1	-0.9	0.9	0.22	0.22	0.00
585.0	0.40	237.52	585.0	-3.0	-2.8	2.9	0.08	-0.06	6.31
647.0	0.88	258.55	647.0	-3.2	-3.4	3.6	0.85	0.77	33.92
First MWD									
742.0	0.79	276.21	742.0	-3.3	-4.8	5.0	0.29	-0.09	18.59
836.0	0.70	290.10	836.0	-3.0	-6.0	6.1	0.21	-0.10	14.78
930.0	0.70	302.32	930.0	-2.5	-7.0	7.1	0.16	0.00	13.00
1,023.0	0.88	282.54	1,022.9	-2.1	-8.2	8.3	0.35	0.19	-21.27

Company:	Noble Energy, Inc	Local Co-ordinate Reference:	Well Wells Ranch AA35-62-1AHNC
Project:	Weld County, CO (NAD 83)	TVD Reference:	Well @ 4764.0usft (H&P 277)
Site:	Sec 36, T6N R63W (Wells Ranch AA35)	MD Reference:	Well @ 4764.0usft (H&P 277)
Well:	Wells Ranch AA35-62-1AHNC	North Reference:	Grid
Wellbore:	Wellbore #1	Survey Calculation Method:	Minimum Curvature
Design:	OH	Database:	EDM 5000.1 Single User Db

Survey

Measured Depth (usft)	Inclination (°)	Azimuth (°)	Vertical Depth (usft)	+N/-S (usft)	+E/-W (usft)	Vertical Section (usft)	Dogleg Rate (°/100usft)	Build Rate (°/100usft)	Turn Rate (°/100usft)
1,118.0	2.73	276.48	1,117.9	-1.6	-11.2	11.2	1.95	1.95	-6.38
1,213.0	3.78	266.63	1,212.7	-1.6	-16.5	16.6	1.25	1.11	-10.37
1,306.0	2.29	243.08	1,305.6	-2.6	-21.2	21.4	2.06	-1.60	-25.32
1,401.0	1.58	191.66	1,400.6	-4.7	-23.2	23.4	1.89	-0.75	-54.13
1,497.0	1.67	197.55	1,496.5	-7.4	-23.9	24.2	0.20	0.09	6.14
1,590.0	1.67	194.91	1,589.5	-10.0	-24.7	25.1	0.08	0.00	-2.84
1,685.0	1.67	203.00	1,684.4	-12.6	-25.6	26.1	0.25	0.00	8.52
1,780.0	1.32	208.71	1,779.4	-14.8	-26.6	27.3	0.40	-0.37	6.01
1,874.0	2.99	212.76	1,873.3	-17.8	-28.5	29.3	1.78	1.78	4.31
1,969.0	4.13	216.54	1,968.2	-22.7	-31.8	32.9	1.22	1.20	3.98
2,063.0	5.19	209.77	2,061.8	-29.1	-36.0	37.3	1.27	1.13	-7.20
2,158.0	5.36	212.33	2,156.4	-36.5	-40.5	42.2	0.31	0.18	2.69
2,253.0	5.98	216.71	2,251.0	-44.3	-45.8	47.9	0.80	0.65	4.61
2,347.0	7.12	222.60	2,344.4	-52.5	-52.7	55.2	1.41	1.21	6.27
2,442.0	8.53	213.20	2,438.5	-62.7	-60.5	63.5	2.00	1.48	-9.89
2,537.0	10.38	209.42	2,532.2	-76.1	-68.6	72.2	2.05	1.95	-3.98
2,631.0	11.96	204.85	2,624.4	-92.3	-76.8	81.2	1.93	1.68	-4.86
2,726.0	10.38	204.06	2,717.6	-109.0	-84.5	89.6	1.67	-1.66	-0.83
2,821.0	9.41	205.11	2,811.2	-123.9	-91.2	97.1	1.04	-1.02	1.11
2,916.0	8.97	207.04	2,905.0	-137.5	-97.9	104.5	0.57	-0.46	2.03
3,011.0	8.00	207.66	2,998.9	-150.0	-104.3	111.5	1.03	-1.02	0.65
3,106.0	8.44	218.12	3,093.0	-161.3	-111.7	119.4	1.64	0.46	11.01
3,201.0	6.77	220.65	3,187.1	-171.0	-119.7	127.8	1.79	-1.76	2.66
3,295.0	4.75	204.49	3,280.6	-178.8	-124.9	133.4	2.74	-2.15	-17.19
3,390.0	3.61	190.87	3,375.4	-185.3	-127.1	135.9	1.58	-1.20	-14.34
3,484.0	3.34	176.11	3,469.2	-190.9	-127.5	136.6	0.99	-0.29	-15.70
3,579.0	2.81	145.78	3,564.1	-195.6	-126.0	135.3	1.78	-0.56	-31.93
3,674.0	0.97	188.85	3,659.0	-198.3	-124.8	134.2	2.32	-1.94	45.34
3,768.0	0.79	193.68	3,753.0	-199.8	-125.1	134.6	0.21	-0.19	5.14
3,863.0	0.70	313.92	3,848.0	-200.0	-125.6	135.2	1.36	-0.09	126.57
3,958.0	0.70	311.81	3,943.0	-199.2	-126.5	136.0	0.03	0.00	-2.22
4,052.0	0.79	313.22	4,037.0	-198.4	-127.4	136.8	0.10	0.10	1.50
4,147.0	0.53	314.27	4,132.0	-197.6	-128.2	137.6	0.27	-0.27	1.11
4,242.0	0.44	36.27	4,227.0	-197.0	-128.3	137.7	0.67	-0.09	86.32
4,336.0	0.35	97.18	4,321.0	-196.8	-127.8	137.2	0.43	-0.10	64.80
4,431.0	1.85	347.93	4,416.0	-195.3	-127.8	137.1	2.10	1.58	-115.00
4,525.0	1.32	359.36	4,509.9	-192.7	-128.1	137.3	0.65	-0.56	12.16
4,620.0	1.41	25.29	4,604.9	-190.6	-127.6	136.7	0.65	0.09	27.29
4,714.0	1.49	356.11	4,698.9	-188.3	-127.2	136.2	0.78	0.09	-31.04
4,809.0	0.35	19.31	4,793.9	-186.8	-127.2	136.1	1.24	-1.20	24.42
4,904.0	0.44	201.42	4,888.9	-186.9	-127.3	136.2	0.83	0.09	-187.25
4,999.0	0.44	87.25	4,983.9	-187.2	-127.0	136.0	0.78	0.00	-120.18
5,094.0	0.79	103.51	5,078.9	-187.3	-126.0	135.0	0.41	0.37	17.12



IDS Survey Report



Company:	Noble Energy, Inc	Local Co-ordinate Reference:	Well Wells Ranch AA35-62-1AHNC
Project:	Weld County, CO (NAD 83)	TVD Reference:	Well @ 4764.0usft (H&P 277)
Site:	Sec 36, T6N R63W (Wells Ranch AA35)	MD Reference:	Well @ 4764.0usft (H&P 277)
Well:	Wells Ranch AA35-62-1AHNC	North Reference:	Grid
Wellbore:	Wellbore #1	Survey Calculation Method:	Minimum Curvature
Design:	OH	Database:	EDM 5000.1 Single User Db

Survey

Measured Depth (usft)	Inclination (°)	Azimuth (°)	Vertical Depth (usft)	+N/-S (usft)	+E/-W (usft)	Vertical Section (usft)	Dogleg Rate (°/100usft)	Build Rate (°/100usft)	Turn Rate (°/100usft)
5,188.0	0.62	141.57	5,172.9	-187.9	-125.1	134.0	0.52	-0.18	40.49
5,283.0	0.26	44.01	5,267.9	-188.1	-124.6	133.6	0.74	-0.38	-102.69
5,378.0	0.62	2.35	5,362.9	-187.5	-124.4	133.4	0.48	0.38	-43.85
5,473.0	0.88	67.56	5,457.9	-186.7	-123.7	132.7	0.88	0.27	68.64
5,567.0	0.09	96.92	5,551.8	-186.4	-123.0	131.9	0.85	-0.84	31.23
5,662.0	0.44	40.58	5,646.8	-186.1	-122.7	131.6	0.42	0.37	-59.31
5,756.0	0.53	335.54	5,740.8	-185.5	-122.6	131.5	0.56	0.10	-69.19
5,851.0	1.41	301.26	5,835.8	-184.5	-123.8	132.6	1.07	0.93	-36.08
5,944.0	1.58	267.50	5,928.8	-183.9	-126.1	134.8	0.95	0.18	-36.30
5,991.0	5.80	255.64	5,975.7	-184.5	-129.0	137.8	9.08	8.98	-25.23
6,039.0	10.46	254.67	6,023.2	-186.3	-135.6	144.5	9.71	9.71	-2.02
6,086.0	14.77	259.68	6,069.1	-188.5	-145.6	154.6	9.45	9.17	10.66
6,133.0	19.08	262.84	6,114.0	-190.5	-159.1	168.2	9.37	9.17	6.72
6,181.0	23.57	262.14	6,158.7	-192.8	-176.4	185.6	9.37	9.35	-1.46
6,228.0	27.96	264.16	6,201.0	-195.2	-196.7	205.9	9.52	9.34	4.30
6,275.0	31.83	266.36	6,241.8	-197.1	-220.0	229.3	8.56	8.23	4.68
6,323.0	36.40	271.55	6,281.5	-197.5	-246.9	256.2	11.28	9.52	10.81
6,370.0	39.92	274.18	6,318.5	-196.1	-275.9	285.1	8.25	7.49	5.60
6,418.0	41.94	273.04	6,354.7	-194.1	-307.3	316.4	4.49	4.21	-2.38
6,465.0	44.41	272.60	6,389.0	-192.5	-339.4	348.4	5.29	5.26	-0.94
6,512.0	47.57	271.37	6,421.6	-191.4	-373.2	382.0	6.98	6.72	-2.62
6,560.0	50.83	270.23	6,453.0	-190.9	-409.5	418.3	7.03	6.79	-2.38
6,607.0	55.22	269.44	6,481.3	-191.0	-447.1	455.8	9.44	9.34	-1.68
6,654.0	59.71	268.73	6,506.5	-191.6	-486.7	495.4	9.64	9.55	-1.51
6,702.0	65.07	268.21	6,528.8	-192.8	-529.2	537.9	11.21	11.17	-1.08
6,749.0	67.45	268.91	6,547.7	-193.8	-572.2	580.9	5.24	5.06	1.49
6,796.0	70.43	269.43	6,564.6	-194.5	-616.0	624.7	6.42	6.34	1.11
6,844.0	75.53	269.79	6,578.6	-194.8	-661.9	670.6	10.65	10.63	0.75
6,898.0	83.01	270.93	6,588.7	-194.4	-714.9	723.5	14.01	13.85	2.11
Last MWD									
6,956.0	84.70	270.23	6,594.9	-193.9	-772.6	781.1	3.15	2.91	-1.21
Actual 7" Csg @ 6956' MD / 6595' TVD / 497' FSL & 598' FEL Sec 35 - Actual 7"									
7,029.0	86.82	269.35	6,600.3	-194.1	-845.4	853.8	3.15	2.91	-1.20
First MWD IFR Survey									
7,124.0	86.84	269.15	6,605.5	-195.4	-940.2	948.6	0.21	0.02	-0.21
7,218.0	87.79	269.43	6,609.9	-196.5	-1,034.1	1,042.4	1.05	1.01	0.30
7,313.0	90.50	270.60	6,611.4	-196.5	-1,129.1	1,137.3	3.11	2.85	1.23
7,408.0	89.92	268.29	6,611.0	-197.4	-1,224.1	1,232.2	2.51	-0.61	-2.43
7,502.0	89.85	267.17	6,611.2	-201.1	-1,318.0	1,326.2	1.19	-0.07	-1.19
7,597.0	90.13	267.05	6,611.2	-205.9	-1,412.9	1,421.2	0.32	0.29	-0.13
7,674.0	90.25	267.13	6,611.0	-209.8	-1,489.8	1,498.2	0.19	0.16	0.10
7,786.0	88.16	266.74	6,612.5	-215.8	-1,601.6	1,610.2	1.90	-1.87	-0.35
7,881.0	86.72	266.25	6,616.8	-221.6	-1,696.3	1,705.1	1.60	-1.52	-0.52
7,975.0	89.42	268.14	6,619.9	-226.2	-1,790.2	1,799.0	3.51	2.87	2.01



IDS Survey Report



Company:	Noble Energy, Inc	Local Co-ordinate Reference:	Well Wells Ranch AA35-62-1AHNC
Project:	Weld County, CO (NAD 83)	TVD Reference:	Well @ 4764.0usft (H&P 277)
Site:	Sec 36, T6N R63W (Wells Ranch AA35)	MD Reference:	Well @ 4764.0usft (H&P 277)
Well:	Wells Ranch AA35-62-1AHNC	North Reference:	Grid
Wellbore:	Wellbore #1	Survey Calculation Method:	Minimum Curvature
Design:	OH	Database:	EDM 5000.1 Single User Db

Survey

Measured Depth (usft)	Inclination (°)	Azimuth (°)	Vertical Depth (usft)	+N/-S (usft)	+E/-W (usft)	Vertical Section (usft)	Dogleg Rate (°/100usft)	Build Rate (°/100usft)	Turn Rate (°/100usft)
8,070.0	91.52	268.61	6,619.1	-228.9	-1,885.1	1,894.0	2.27	2.21	0.49
8,165.0	90.31	266.91	6,617.6	-232.6	-1,980.0	1,989.0	2.20	-1.27	-1.79
8,260.0	90.25	266.38	6,617.2	-238.2	-2,074.9	2,084.0	0.56	-0.06	-0.56
8,354.0	90.00	267.20	6,617.0	-243.5	-2,168.7	2,178.0	0.91	-0.27	0.87
8,449.0	89.61	266.06	6,617.3	-249.0	-2,263.5	2,273.0	1.27	-0.41	-1.20
8,544.0	89.97	269.49	6,617.6	-252.7	-2,358.5	2,367.9	3.63	0.38	3.61
8,639.0	90.19	271.67	6,617.5	-251.8	-2,453.4	2,462.8	2.31	0.23	2.29
8,734.0	90.09	271.07	6,617.3	-249.5	-2,548.4	2,557.5	0.64	-0.11	-0.63
8,828.0	90.00	270.37	6,617.2	-248.3	-2,642.4	2,651.3	0.75	-0.10	-0.74
8,923.0	90.00	270.35	6,617.2	-247.7	-2,737.4	2,746.2	0.02	0.00	-0.02
9,018.0	90.13	270.62	6,617.1	-246.9	-2,832.4	2,841.0	0.32	0.14	0.28
9,113.0	90.06	269.42	6,616.9	-246.9	-2,927.4	2,935.9	1.27	-0.07	-1.26
9,208.0	90.25	271.04	6,616.7	-246.5	-3,022.4	3,030.8	1.72	0.20	1.71
9,303.0	90.50	271.94	6,616.0	-244.0	-3,117.4	3,125.5	0.98	0.26	0.95
9,397.0	90.24	271.62	6,615.4	-241.1	-3,211.3	3,219.2	0.44	-0.28	-0.34
9,492.0	90.76	271.76	6,614.6	-238.3	-3,306.3	3,313.9	0.57	0.55	0.15
9,587.0	91.43	271.54	6,612.8	-235.6	-3,401.2	3,408.6	0.74	0.71	-0.23
9,682.0	89.55	269.52	6,612.0	-234.7	-3,496.2	3,503.5	2.90	-1.98	-2.13
9,777.0	90.04	270.63	6,612.3	-234.6	-3,591.2	3,598.3	1.28	0.52	1.17
9,871.0	89.61	270.11	6,612.6	-234.0	-3,685.2	3,692.2	0.72	-0.46	-0.55
9,966.0	89.36	270.26	6,613.5	-233.7	-3,780.2	3,787.1	0.31	-0.26	0.16
10,061.0	88.37	269.92	6,615.3	-233.5	-3,875.2	3,881.9	1.10	-1.04	-0.36
10,156.0	88.37	269.13	6,618.1	-234.3	-3,970.1	3,976.8	0.83	0.00	-0.83
10,251.0	87.91	269.31	6,621.1	-235.6	-4,065.1	4,071.7	0.52	-0.48	0.19
10,346.0	89.73	268.09	6,623.1	-237.7	-4,160.0	4,166.6	2.31	1.92	-1.28
10,441.0	90.53	267.34	6,622.9	-241.5	-4,254.9	4,261.6	1.15	0.84	-0.79
10,535.0	91.36	267.28	6,621.3	-245.9	-4,348.8	4,355.6	0.89	0.88	-0.06
10,630.0	90.75	269.91	6,619.6	-248.3	-4,443.8	4,450.6	2.84	-0.64	2.77
10,725.0	91.03	270.26	6,618.1	-248.1	-4,538.8	4,545.4	0.47	0.29	0.37
10,819.0	88.83	271.35	6,618.2	-246.8	-4,632.7	4,639.3	2.61	-2.34	1.16
10,914.0	88.18	271.87	6,620.7	-244.1	-4,727.7	4,733.9	0.88	-0.68	0.55
11,009.0	89.26	271.91	6,622.8	-241.0	-4,822.6	4,828.6	1.14	1.14	0.04
Last MWD IFR Survey									
11,091.0	89.26	271.91	6,623.9	-238.3	-4,904.5	4,910.3	0.00	0.00	0.00
PTD @ 11091' MD / 6624' TVD / 497' FSL & 534' FWL Sec 35									

Design Targets

Target Name

- hit/miss target	Dip Angle (°)	Dip Dir. (°)	TVD (usft)	+N/-S (usft)	+E/-W (usft)	Northing (usft)	Easting (usft)	Latitude	Longitude
- Shape									
Actual BHL WR AA35	0.00	0.00	6,623.9	-238.3	-4,904.5	1,403,899.12	3,302,919.02	40° 26' 13.209 N	104° 24' 42.259 W
- actual wellpath hits target center									
- Point									



IDS Survey Report



Company:	Noble Energy, Inc	Local Co-ordinate Reference:	Well Wells Ranch AA35-62-1AHNC
Project:	Weld County, CO (NAD 83)	TVD Reference:	Well @ 4764.0usft (H&P 277)
Site:	Sec 36, T6N R63W (Wells Ranch AA35)	MD Reference:	Well @ 4764.0usft (H&P 277)
Well:	Wells Ranch AA35-62-1AHNC	North Reference:	Grid
Wellbore:	Wellbore #1	Survey Calculation Method:	Minimum Curvature
Design:	OH	Database:	EDM 5000.1 Single User Db

Casing Points

Measured Depth (usft)	Vertical Depth (usft)	Name	Casing Diameter (")	Hole Diameter (")
6,956.0	6,594.9	Actual 7"	7	8-3/4

Design Annotations

Measured Depth (usft)	Vertical Depth (usft)	Local Coordinates		Comment
		+N/-S (usft)	+E/-W (usft)	
647.0	647.0	-3.2	-3.4	First MWD
6,898.0	6,588.7	-194.4	-714.9	Last MWD
6,956.0	6,594.9	-193.9	-772.6	Actual 7" Csg @ 6956' MD / 6595' TVD / 497' FSL & 598' FEL Sec 35
7,029.0	6,600.3	-194.1	-845.4	First MWD IFR Survey
11,009.0	6,622.8	-241.0	-4,822.6	Last MWD IFR Survey
11,091.0	6,623.9	-238.3	-4,904.5	PTD @ 11091' MD / 6624' TVD / 497' FSL & 534' FWL Sec 35

Checked By: _____ Approved By: _____ Date: _____



Weld County, CO (NAD 83)

Sec 36, T6N R63W (Wells Ranch AA35)

Wells Ranch AA35-62-1AHNC

H&P 277

Plan #2



Azimuths to Grid North
Convergence: 0.71°
Total Correction: 7.60°

Magnetic Field
Strength: 52915.2snT
Dip Angle: 67.05°
Date: 1/23/2014
Model: IGRF2010

ACTUAL CASING DETAILS

MD	TVD	Name	Size
6956	6595	7"	7

SITE DETAILS: Sec 36, T6N R63W (Wells Ranch AA35)

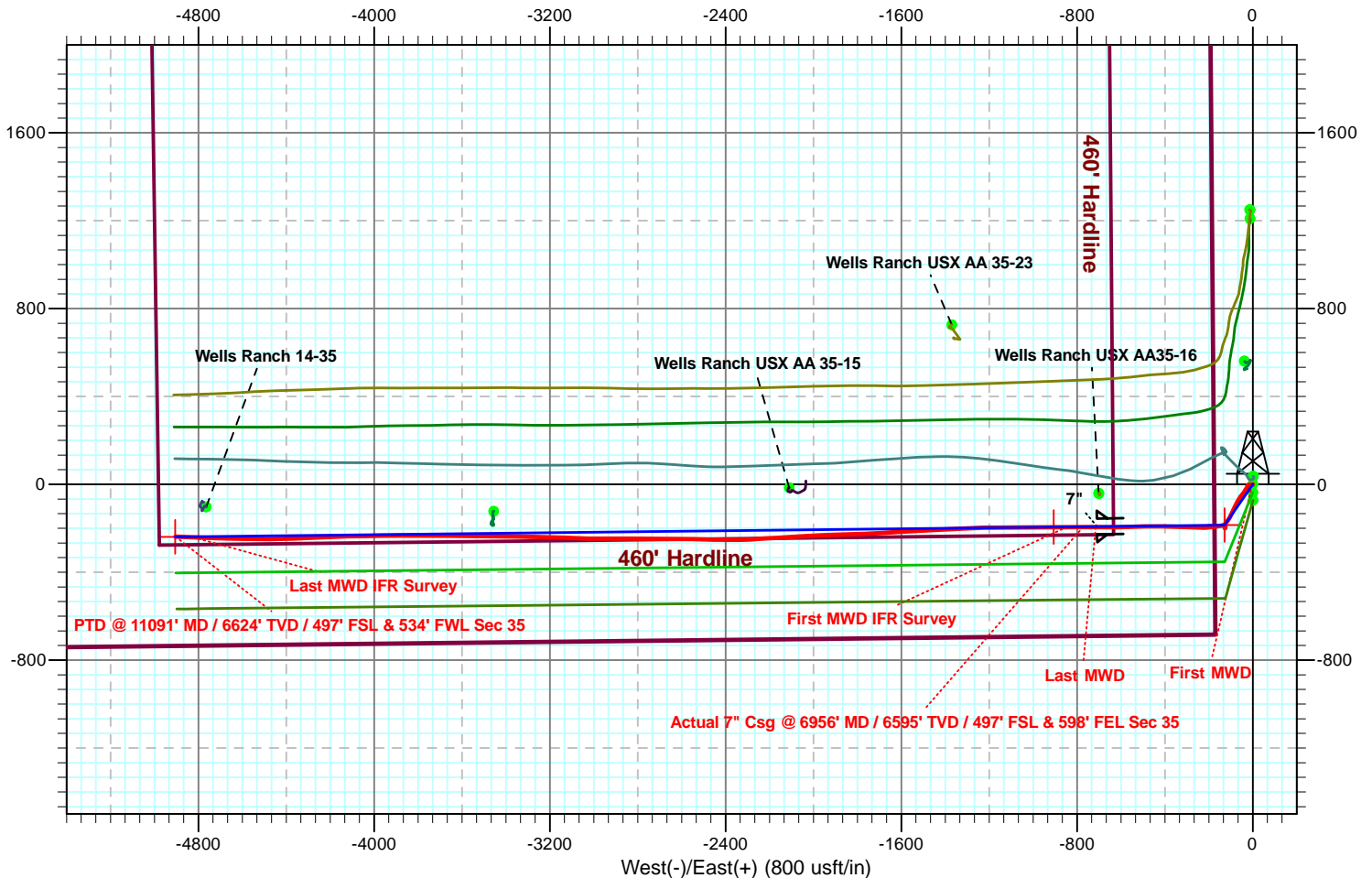
Site Centre Northing: 1404137.44
Easting: 3307823.51
Positional Uncertainty: 0.0
Convergence: 0.71
Local North: Grid

SECTION DETAILS

MD	Inc	Azi	TVD	+N/-S	+E/-W	Dleg	TFace	Vsect	Target
0.0	0.00	0.00	0.0	0.0	0.0	0.00	0.00	0.0	
1800.0	0.00	0.00	1800.0	0.0	0.0	0.00	0.00	0.0	
2399.9	12.00	214.61	2395.5	-51.5	-35.5	2.00	214.61	38.0	
2881.9	12.00	214.61	2867.0	-134.0	-92.5	0.00	0.00	98.9	
3481.8	0.00	0.00	3462.5	-185.5	-128.0	2.00	180.00	136.9	
5984.8	0.00	0.00	5965.5	-185.5	-128.0	0.00	0.00	136.9	KOP Pln #2 WR AA35-62-1AHNC
6929.2	85.00	269.36	6599.7	-192.0	-709.1	9.00	269.36	717.6	
7004.2	85.00	269.36	6606.2	-192.8	-783.8	0.00	0.00	792.3	
7126.8	89.90	269.36	6611.7	-194.2	-906.2	4.00	-0.06	914.6	
11125.7	89.90	269.36	6618.6	-239.2	-4904.9	0.00	0.00	4910.7	PBHL WR AA35-62-1AHNC

WELL DETAILS: Wells Ranch AA35-62-1AHNC

+N/-S	+E/-W	Ground Level:	4740.0		
		Northing	Easting	Latitude	Longitude
0.0	0.0	1404137.42	3307823.51	40° 26' 14.964 N	104° 23' 38.796 W



SHL @ 680' FSL & 178' FWL Sec 36

Actual 7" Csg @ 6956' MD / 497' FSL & 598' FEL Sec 35

Actual BHL @ 497' FSL & 534' FWL Sec 35





Weld County, CO (NAD 83)
Sec 36, T6N R63W (Wells Ranch AA35)
Wells Ranch AA35-62-1AHNC
H&P 277
Plan #2



Azimuths to Grid North
 Convergence: 0.71°
 Total Correction: 7.60°
 Magnetic Field
 Strength: 52915.2snT
 Dip Angle: 67.05°
 Date: 1/23/2014
 Model: IGRF2010

ACTUAL CASING DETAILS

MD	TVD	Name	Size
6956	6595	7"	7

SITE DETAILS: Sec 36, T6N R63W (Wells Ranch AA35)

Site Centre Northing: 1404137.44
 Easting: 3307823.51
 Positional Uncertainty: 0.0
 Convergence: 0.71
 Local North: Grid

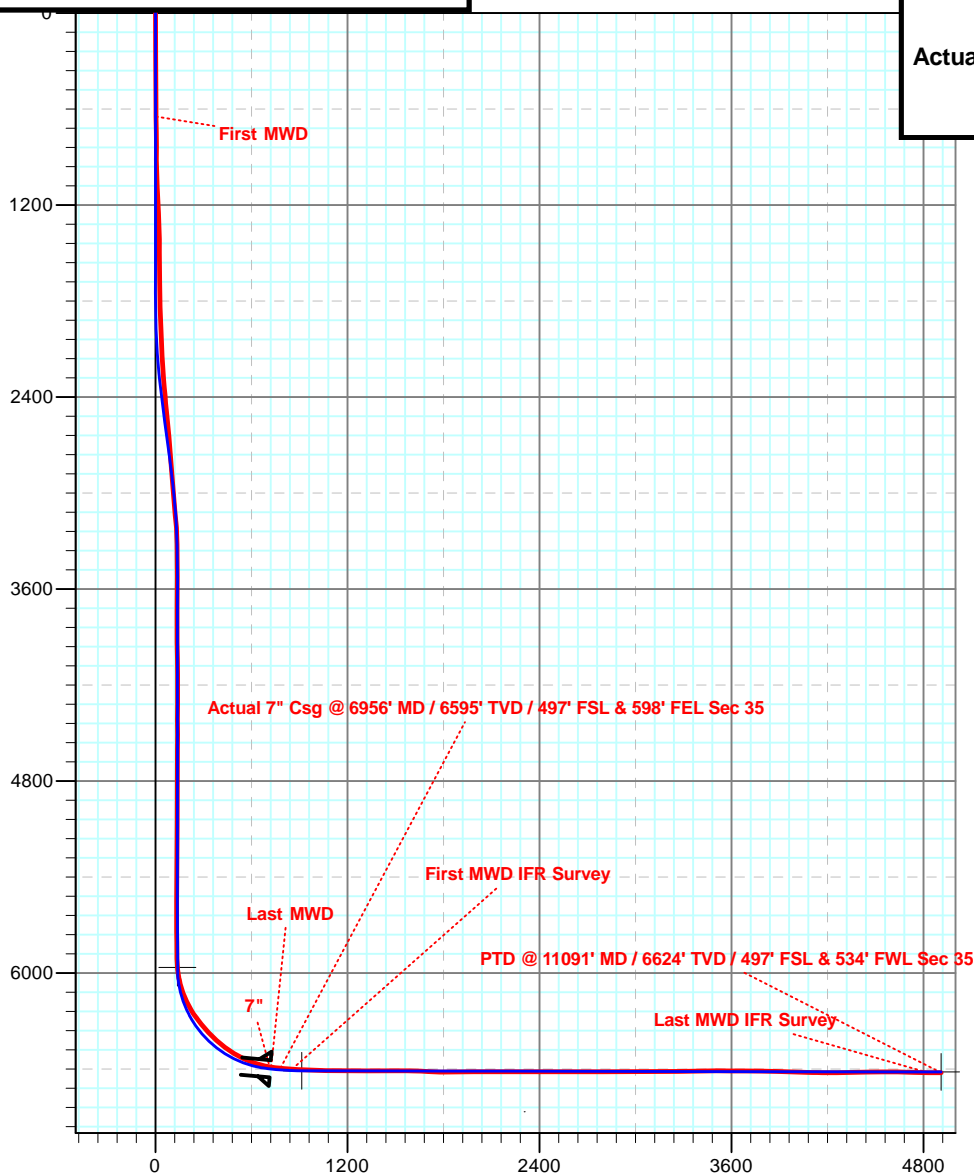
SECTION DETAILS

MD	Inc	Azi	TVD	+N/-S	+E/-W	Dleg	TFace	Vsect	Target
0.0	0.00	0.00	0.0	0.0	0.0	0.00	0.00	0.0	
1800.0	0.00	0.00	1800.0	0.0	0.0	0.00	0.00	0.0	
2399.9	12.00	214.61	2395.5	-51.5	-35.5	2.00	214.61	38.0	
2881.9	12.00	214.61	2867.0	-134.0	-92.5	0.00	0.00	98.9	
3481.8	0.00	0.00	3462.5	-185.5	-128.0	2.00	180.00	136.9	
5984.8	0.00	0.00	5965.5	-185.5	-128.0	0.00	0.00	136.9	KOP Pln #2 WR AA35-62-1AHNC
6929.2	85.00	269.36	6599.7	-192.0	-709.1	9.00	269.36	717.6	
7004.2	85.00	269.36	6606.2	-192.8	-783.8	0.00	0.00	792.3	
7126.8	89.90	269.36	6611.7	-194.2	-906.2	4.00	-0.06	914.6	
11125.7	89.90	269.36	6618.6	-239.2	-4904.9	0.00	0.00	4910.7	PBHL WR AA35-62-1AHNC

WELL DETAILS: Wells Ranch AA35-62-1AHNC

		Ground Level: 4740.0			
+N/-S	+E/-W	Northing	Easting	Latitude	Longitude
0.0	0.0	1404137.42	3307823.51	40° 26' 14.964 N	104° 23' 38.796 W

SHL @ 680' FSL & 178' FWL Sec 36
Actual 7" Csg @ 6956' MD / 497' FSL & 598' FEL Sec 35
Actual BHL @ 497' FSL & 534' FWL Sec 35



Vertical Section at 267.22° (1200 usft/in)

