



TRILOBITE
TESTING, INC.

DRILL STEM TEST REPORT

BayHorse Petroleum, LLC.

22-18s-47w

2558 E Portsmouth Ave.
Salt Lake City, UT 84121

Tres Hombres 1-22

Job Ticket: 58652

DST#: 3

ATTN: Randy Say

Test Start: 2015.03.23 @ 01:45:00

GENERAL INFORMATION:

Formation: **Lansing**

Deviated: No Whipstock: 0.00 ft (KB)

Time Tool Opened: 03:54:15

Time Test Ended: 08:52:45

Test Type: Conventional Bottom Hole (Reset)

Tester: Justin Harris

Unit No: 71

Interval: 4220.00 ft (KB) To 4255.00 ft (KB) (TVD)

Total Depth: 4496.00 ft (KB) (TVD)

Hole Diameter: 7.88 inches Hole Condition: Fair

Reference Elevations: 4140.00 ft (KB)

4129.00 ft (CF)

KB to GR/CF: 11.00 ft

Serial #: 8674 Inside

Press@RunDepth: 121.90 psig @ 4221.00 ft (KB)

Start Date: 2015.03.23

End Date:

2015.03.23

Start Time: 01:45:05

End Time:

08:52:44

Capacity: 8000.00 psig

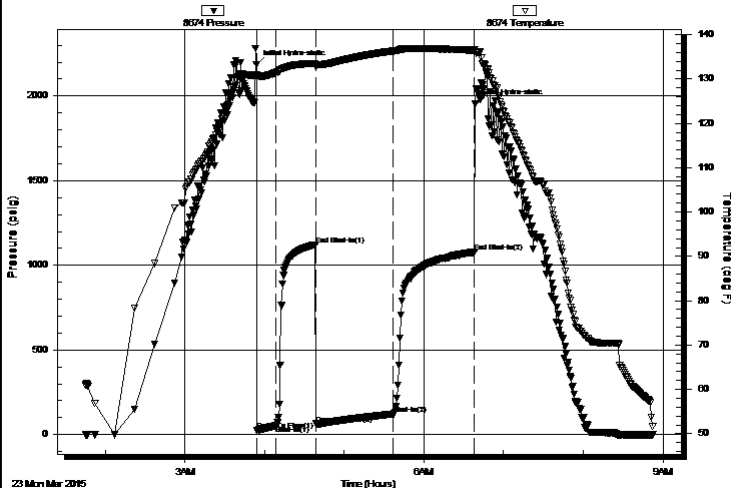
Last Calib.: 2015.03.23

Time On Btm: 2015.03.23 @ 03:53:45

Time Off Btm: 2015.03.23 @ 06:38:45

TEST COMMENT: 15: Weak surface blow build to 6 ".
30: No Return.
60: Weak surface blow build to 1 ".
60: No Return.

Pressure vs. Time



PRESSURE SUMMARY

Time (Min.)	Pressure (psig)	Temp (deg F)	Annotation
0	2187.09	130.99	Initial Hydro-static
1	27.53	130.41	Open To Flow (1)
15	52.92	131.44	Shut-In(1)
45	1122.40	133.55	End Shut-In(1)
45	63.45	132.81	Open To Flow (2)
103	121.90	136.31	Shut-In(2)
165	1077.25	136.51	End Shut-In(2)
165	1953.24	136.60	Final Hydro-static

Recovery

Length (ft)	Description	Volume (bbl)
230.00	omcw 10o 20m 70w	1.13
0.00	165 GIP	0.00

Gas Rates

	Choke (inches)	Pressure (psig)	Gas Rate (Mcf/d)
--	----------------	-----------------	------------------

* Recovery from multiple tests



Test Start: 2015.03.23 @ 01:45:00

KB to GR/CF: 11.00 ft

Time Off Btm:

Printed: 2015.03.23 @ 10:12:08



TRILOBITE
TESTING, INC.

DRILL STEM TEST REPORT

FLUID SUMMARY

BayHorse Petroleum, LLC.

22-18s-47w

2558 E Portsmouth Ave.
Salt Lake City , UT 84121

Tres Hombres 1-22

Job Ticket: 58652

DST#: 3

ATTN: Randy Say

Test Start: 2015.03.23 @ 01:45:00

Mud and Cushion Information

Mud Type: Gel Chem

Mud Weight: 9.00 lb/gal

Viscosity: 49.00 sec/qt

Water Loss: 7.60 in³

Resistivity: ohm.m

Salinity: 1800.00 ppm

Filter Cake: 1.00 inches

Cushion Type:

Cushion Length: ft

Cushion Volume: bbl

Gas Cushion Type:

Gas Cushion Pressure: psig

Oil API:

0 deg API

Water Salinity: 29000 ppm

Recovery Information

Recovery Table

Length ft	Description	Volume bbl
230.00	omcw 10o 20m 70w	1.131
0.00	165 GIP	0.000

Total Length: 230.00 ft Total Volume: 1.131 bbl

Num Fluid Samples: 0

Num Gas Bombs: 0

Serial #:

Laboratory Name:

Laboratory Location:

Recovery Comments: 200ml o 400ml m 1400ml w .8 cube ft g
API RW .33 @ 51

Serial #: 8674

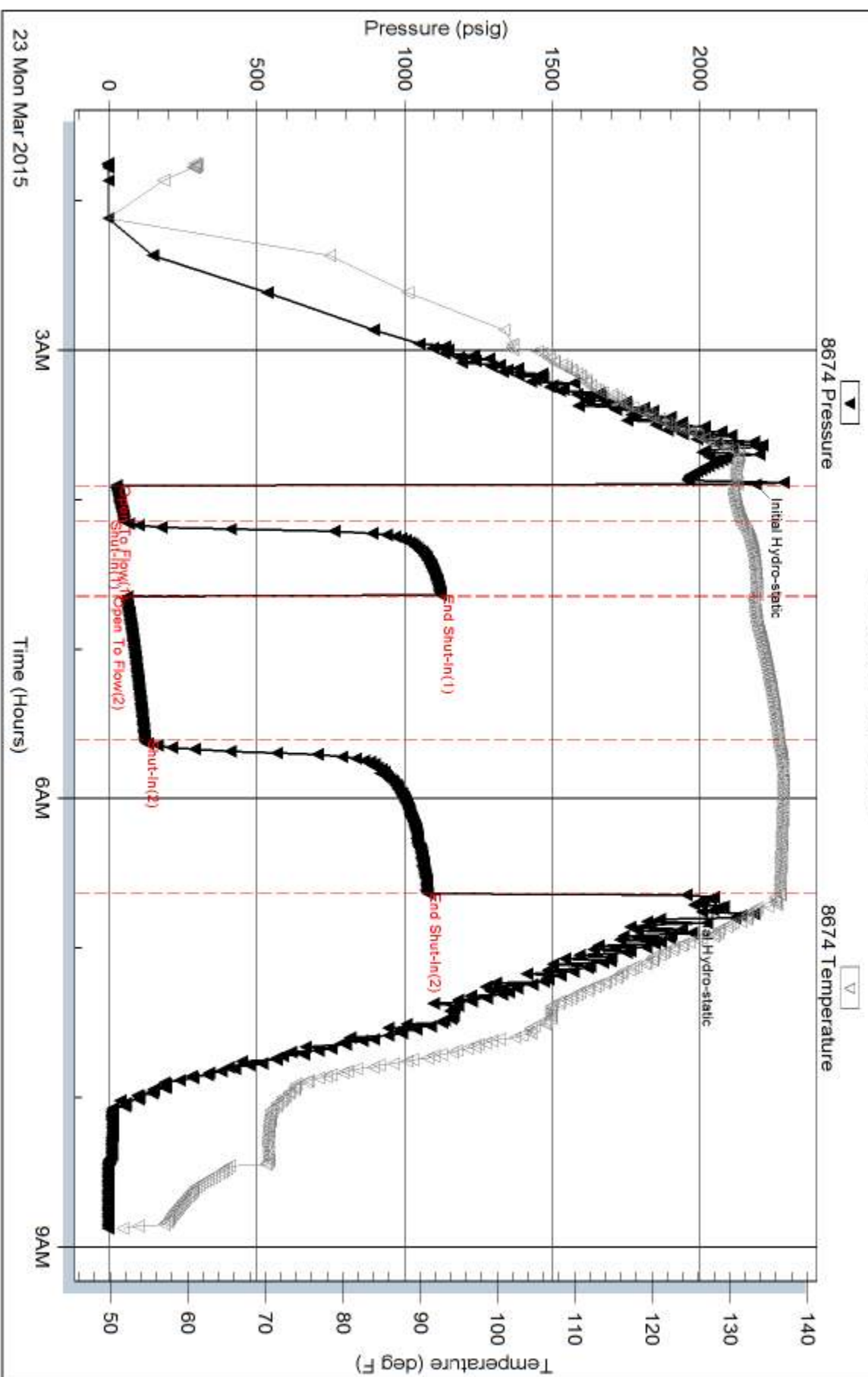
Inside

BayHorse Petroleum, LLC.

Tres Hombres 1-22

DST Test Number: 3

Pressure vs. Time



Serial #: 8672

Below (Stratford) Petroleum, LLC.

Tres Hombres 1-22

DST Test Number: 3

