



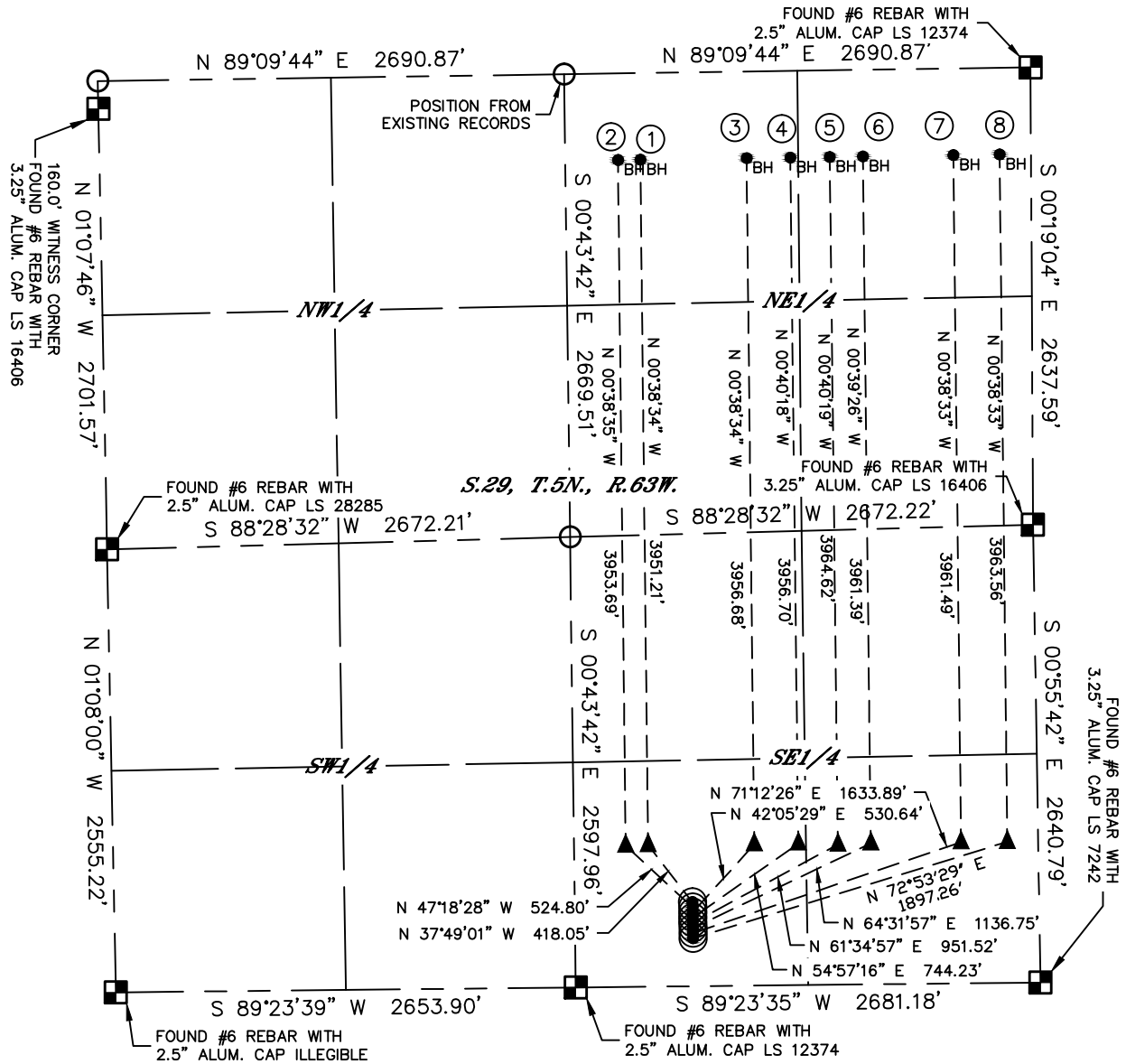
Lat40°, Inc. 6250 W. 10th Street, Unit 2, Greeley, CO 970-515-5294

MULTI-WELL PLAN

TRIMAR FARMS 5N63W29T PAD

THIS MAP DOES NOT REPRESENT A BOUNDARY SURVEY

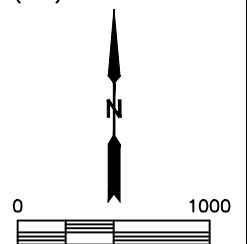
SECTION: 29
TOWNSHIP: 5N
RANGE: 63W



LEGEND

- = ALIQUOT MONUMENT AS DESCRIBED
- = CALCULATED POSITION
- = SURFACE HOLE LOCATION (SHL)
- ▲ = ENTRY POINT LOCATION (EP)
- _{BH} = BOTTOM HOLE LOCATION (BHL)
- ⊙ = EXISTING WELL
- ⊙ = ABANDONED WELL

| # | WELL NAME | BHL FOOTAGE | BHL LAT° | BHL LONG° | BHL S-T-R |
|---|----------------------|--------------|--------------|------------|-----------|
| 1 | TRIMAR FARMS 29Q-321 | 500 FNL 2254 | FEL 40.37636 | -104.45854 | 29-5-63 |
| 2 | TRIMAR FARMS 29Q-221 | 500 FNL 2383 | FEL 40.37636 | -104.45900 | 29-5-63 |
| 3 | TRIMAR FARMS 29T-241 | 500 FNL 1641 | FEL 40.37637 | -104.45634 | 29-5-63 |
| 4 | TRIMAR FARMS 29T-301 | 500 FNL 1389 | FEL 40.37637 | -104.45543 | 29-5-63 |
| 5 | TRIMAR FARMS 29T-401 | 500 FNL 1161 | FEL 40.37637 | -104.45461 | 29-5-63 |
| 6 | TRIMAR FARMS 29T-221 | 500 FNL 970 | FEL 40.37637 | -104.45393 | 29-5-63 |
| 7 | TRIMAR FARMS 29Y-341 | 500 FNL 448 | FEL 40.37637 | -104.45206 | 29-5-63 |
| 8 | TRIMAR FARMS 29Y-201 | 500 FNL 181 | FEL 40.37638 | -104.45110 | 29-5-63 |





MULTI-WELL PLAN

TRIMAR FARMS 5N63W29T PAD

SECTION: 29
TOWNSHIP: 5N
RANGE: 63W

