

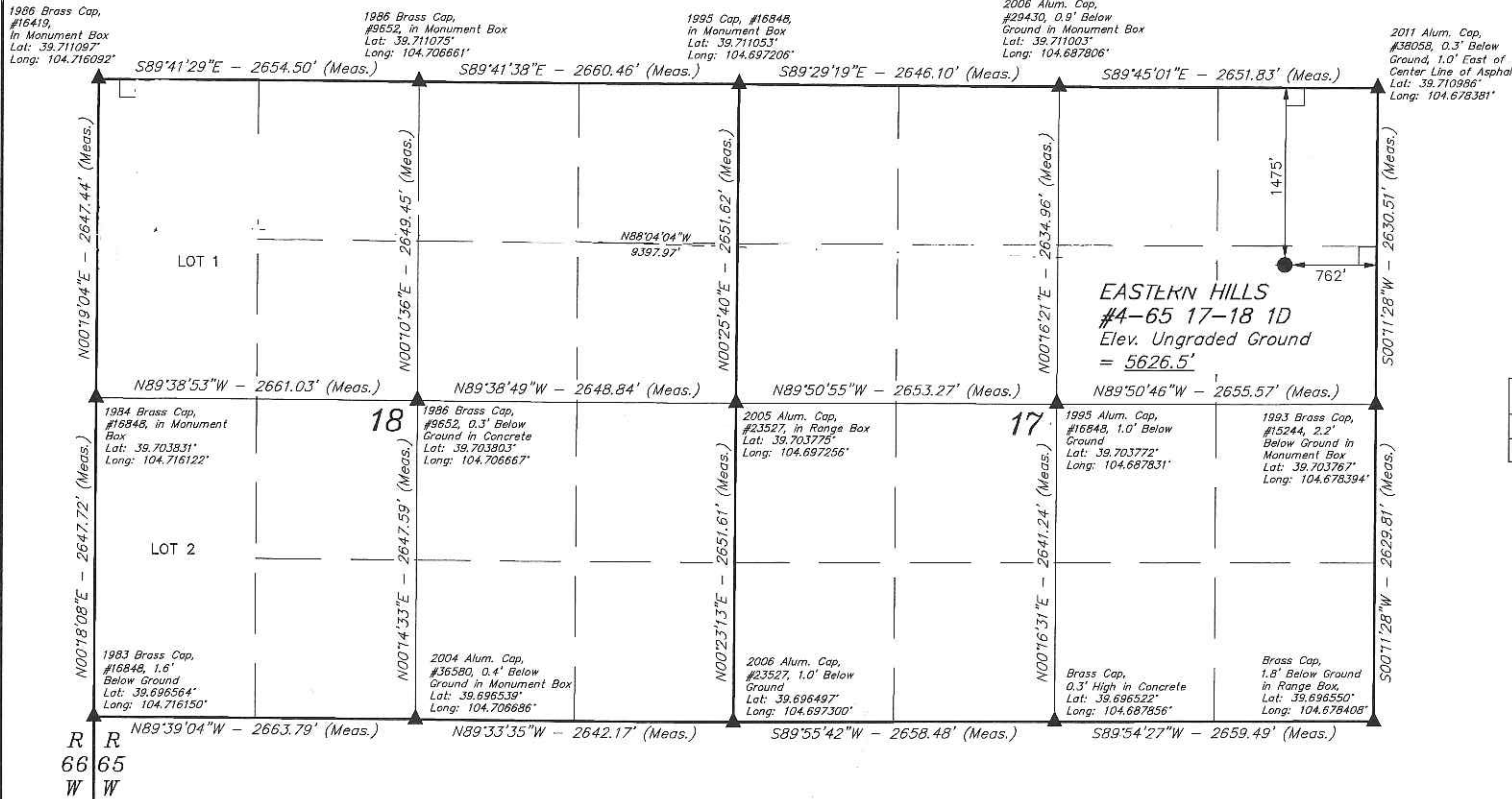
T4S, R65W, 6th P.M.

ConocoPhillips Company

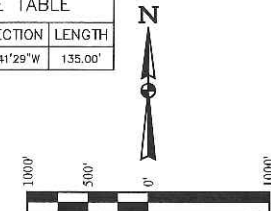
EASTERN HILLS #4-65 17-18 1D
SE 1/4 NE 1/4, SECTION 17, T4S, R65W, 6th P.M., TAKEN FROM 1988
ARAPAHOE COUNTY, COLORADO

BASIS OF BEARINGS
BASIS OF BEARINGS IS A G.P.S. OBSERVATION
BASIS OF ELEVATION

BENCHMARK 374 LOCATED ON THE SECTION LINE BETWEEN
SECTIONS 12 & 13, T5S, R64W, 6th P.M., TAKEN FROM 1988
PUBLISHED DATUM BY THE UNITED STATES DEPARTMENT OF
THE INTERIOR, GEOLOGICAL SURVEY AS BEING 6054.61 FEET.



LINE TABLE		
LINE	DIRECTION	LENGTH
L1	N89°41'29"W	135.00'



CERTIFICATION
THIS IS TO CERTIFY THAT THE ABOVE SURVEY WAS PREPARED AND CONDUCTED IN ACCORDANCE WITH THE RULES AND REGULATIONS OF THE BOARD OF LAND SURVEYORS OF THE STATE OF COLORADO AND THAT THE SAME ARE TRUE AND CORRECT TO THE BEST OF MY KNOWLEDGE AND BELIEF.

REGISTERED LAND SURVEYOR
RECREATION NO. 28285
STATE OF COLORADO
JAN 15 2015

PDOP = 2.1

NAD 83 (SURFACE LOCATION)	
LATITUDE =	39°42'24.99" (39.706942)
LONGITUDE =	104°40'51.94" (104.681094)
NAD 27 (SURFACE LOCATION)	
LATITUDE =	39°42'25.04" (39.706956)
LONGITUDE =	104°40'50.05" (104.680569)
STATE PLANE NAD 83 (COLORADO CENT.)	
N: 1683421.57	E: 3230399.44
STATE PLANE NAD 27 (COLORADO CENT.)	
N: 683413.82	E: 2230553.17

UINTAH
ENGINEERING & LAND SURVEYING

UELS, LLC
Corporate Office * 85 South 200 East
Vernal, UT 84078 * (435) 789-1017

SURVEYED BY: GREG WEIMER, D.W.	DATE: 02-05-15
DRAWN BY: K.B.	DATE DRAWN: 02-09-15
SCALE: 1" = 1000'	REVISED: 03-02-15

WELL LOCATION PLAT

LEGEND:

- 90° SYMBOL
- PROPOSED WELLHEAD.
- SECTION CORNERS LOCATED.