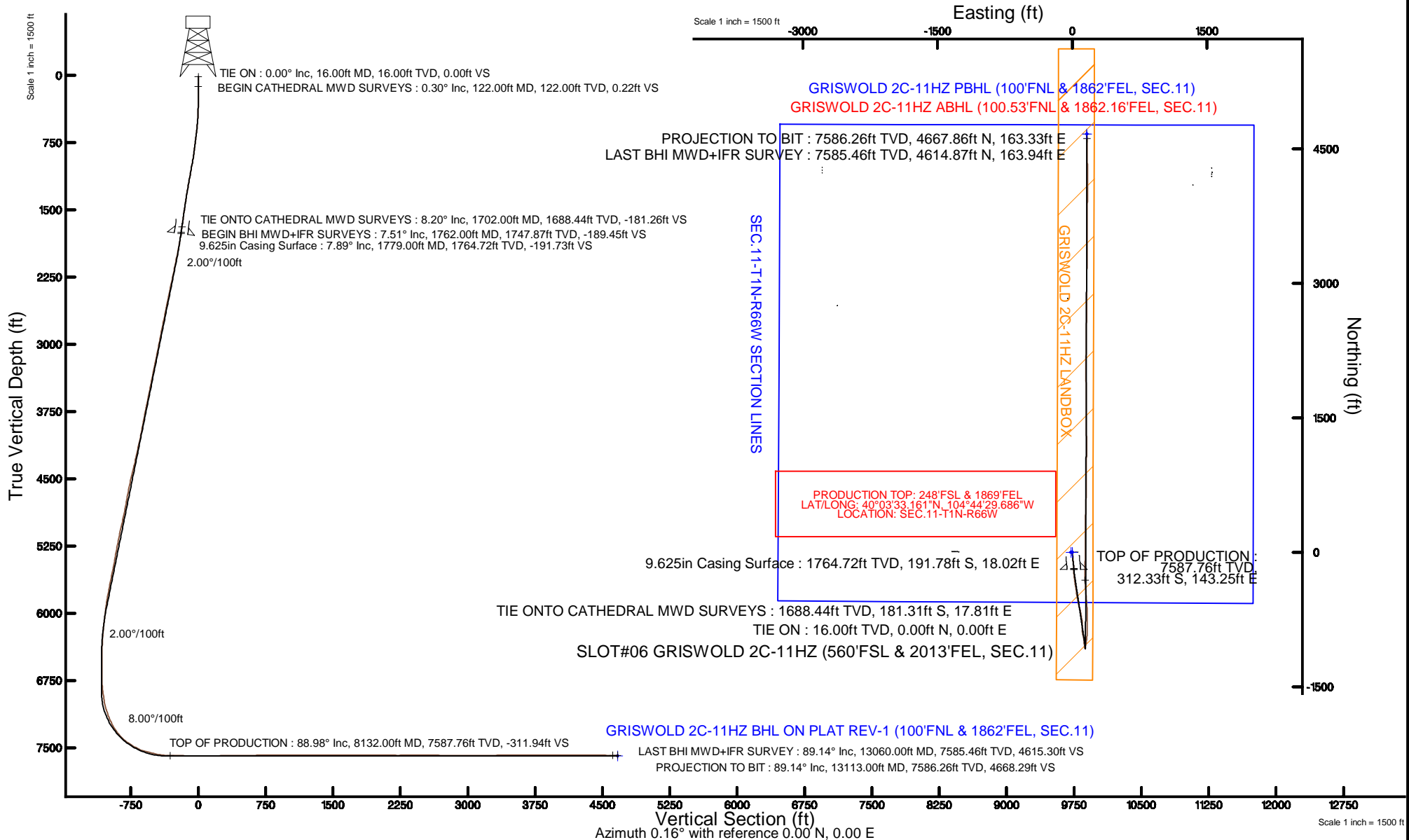


# KERR-MCGEE OIL & GAS ONSHORE LP (LAMBERT STATE PLANE COORD)

Location: COLORADO Slot: SLOT#06 GRISWOLD 2C-11HZ (560'FSL & 2013'FEL, SEC.11)  
 Field: WELD COUNTY (KERR MCGEE) Well: GRISWOLD 2C-11HZ  
 Facility: SEC.11-T1N-R66W Wellbore: GRISWOLD 2C-11HZ PWB

Plot reference wellpath is GRISWOLD 2C-11HZ (REV-B.0) PWP

True vertical depths are referenced to XTREME 24 (16'KB) (RKB)	Grid System: NAD83 / Lambert Colorado SP, Northern Zone (501), US feet
Measured depths are referenced to XTREME 24 (16'KB) (RKB)	North Reference: True north
XTREME 24 (16'KB) (RKB) to Mean Sea Level: 5141 feet	Scale: True distance
Mean Sea Level to Mud line (At Slot: SLOT#06 GRISWOLD 2C-11HZ (560'FSL & 2013'FEL, SEC.11)): 0 feet	Depths are in feet
Coordinates are in feet referenced to Slot	Created by: robiale01 on 3/12/2015



# Actual Wellpath Report

GRISWOLD 2C-11HZ AWP

Page 1 of 6

REFERENCE WELLPATH IDENTIFICATION			
Operator	KERR-MCGEE OIL & GAS ONSHORE LP (LAMBERT STATE PLANE COORD)	Slot	SLOT#06 GRISWOLD 2C-11HZ (560'FSL & 2013'FEL, SEC.11)
Area	COLORADO	Well	GRISWOLD 2C-11HZ
Field	WELD COUNTY (KERR MCGEE)	Wellbore	GRISWOLD 2C-11HZ AWB <122-13113>
Facility	SEC.11-T1N-R66W		

REPORT SETUP INFORMATION			
Projection System	NAD83 / Lambert Colorado SP, Northern Zone (501), US feet	Software System	WellArchitect® 4.1.1
North Reference	True	User	Robiale01
Scale	0.999962	Report Generated	3/12/2015 at 3:44:33 PM
Convergence at slot	0.49° East	Database/Source file	WellArchitectDB/GRISWOLD_2C-11HZ_AWB_122-13113_.xml

WELLPATH LOCATION						
	Local coordinates		Grid coordinates		Geographic coordinates	
	North[ft]	East[ft]	Easting[US ft]	Northing[US ft]	Latitude	Longitude
Slot Location	-4234.02	2785.19	3212141.29	1265635.02	40°03'36.248"N	104°44'31.528"W
Facility Reference Pt			3209320.61	1269845.23	40°04'18.091"N	104°45'07.348"W
Field Reference Pt			<b>3197771.84</b>	<b>1268891.29</b>	40°04'09.600"N	104°47'36.000"W

WELLPATH DATUM			
Calculation method	Minimum curvature	XTREME 24 (16'KB) (RKB) to Facility Vertical Datum	5141.00ft
Horizontal Reference Pt	Slot	XTREME 24 (16'KB) (RKB) to Mean Sea Level	5141.00ft
Vertical Reference Pt	XTREME 24 (16'KB) (RKB)	XTREME 24 (16'KB) (RKB) to Mud Line at Slot (SLOT#06 GRISWOLD 2C-11HZ (560'FSL & 2013'FEL, SEC.11))	5141.00ft
MD Reference Pt	XTREME 24 (16'KB) (RKB)	Section Origin	N 0.00, E 0.00 ft
Field Vertical Reference	Mean Sea Level	Section Azimuth	2.00°

REFERENCE WELLPATH IDENTIFICATION			
Operator	KERR-MCGEE OIL & GAS ONSHORE LP (LAMBERT STATE PLANE COORD)	Slot	SLOT#06 GRISWOLD 2C-11HZ (560'FSL & 2013'FEL, SEC.11)
Area	COLORADO	Well	GRISWOLD 2C-11HZ
Field	WELD COUNTY (KERR MCGEE)	Wellbore	GRISWOLD 2C-11HZ AWB <122-13113>
Facility	SEC.11-T1N-R66W		

WELLPATH DATA (138 stations) † = interpolated/extrapolated station										
MD [ft]	Inclination [°]	Azimuth [°]	TVD [ft]	Vert Sect [ft]	North [ft]	East [ft]	Latitude	Longitude	DLS [°/100ft]	Comments
0.00†	0.000	321.300	0.00	0.00	0.00	0.00	40°03'36.248"N	104°44'31.528"W	0.00	
16.00	0.000	321.300	16.00	0.00	0.00	0.00	40°03'36.248"N	104°44'31.528"W	0.00	TIE ON
122.00	0.300	321.300	122.00	0.21	0.22	-0.17	40°03'36.250"N	104°44'31.530"W	0.28	BEGIN CATHEDRAL MWD SURVEYS
211.00	0.400	335.900	211.00	0.67	0.68	-0.45	40°03'36.255"N	104°44'31.534"W	0.15	
297.00	0.400	209.700	297.00	0.67	0.70	-0.72	40°03'36.255"N	104°44'31.537"W	0.83	
385.00	1.700	175.300	384.98	-0.90	-0.87	-0.76	40°03'36.239"N	104°44'31.538"W	1.58	
474.00	3.400	176.700	473.89	-4.84	-4.82	-0.50	40°03'36.200"N	104°44'31.534"W	1.91	
569.00	5.300	177.200	568.61	-12.02	-12.02	-0.13	40°03'36.129"N	104°44'31.530"W	2.00	
663.00	6.800	170.200	662.09	-21.79	-21.84	1.03	40°03'36.032"N	104°44'31.515"W	1.78	
760.00	7.100	170.900	758.37	-33.29	-33.42	2.96	40°03'35.918"N	104°44'31.490"W	0.32	
854.00	8.400	174.300	851.51	-45.80	-45.99	4.56	40°03'35.794"N	104°44'31.469"W	1.47	
950.00	9.400	174.500	946.36	-60.52	-60.77	6.01	40°03'35.647"N	104°44'31.451"W	1.04	
1046.00	10.300	176.600	1040.94	-76.84	-77.14	7.27	40°03'35.486"N	104°44'31.435"W	1.01	
1142.00	10.800	175.400	1135.32	-94.32	-94.67	8.50	40°03'35.312"N	104°44'31.419"W	0.57	
1235.00	10.000	175.200	1226.79	-110.99	-111.40	9.87	40°03'35.147"N	104°44'31.401"W	0.86	
1330.00	9.100	172.900	1320.47	-126.60	-127.08	11.49	40°03'34.992"N	104°44'31.380"W	1.03	
1426.00	8.500	170.600	1415.34	-141.05	-141.61	13.59	40°03'34.849"N	104°44'31.353"W	0.72	
1522.00	8.400	174.800	1510.30	-154.96	-155.59	15.38	40°03'34.710"N	104°44'31.330"W	0.65	
1616.00	8.200	173.700	1603.32	-168.41	-169.09	16.74	40°03'34.577"N	104°44'31.313"W	0.27	
1702.00	8.200	176.300	1688.44	-180.58	-181.31	17.81	40°03'34.456"N	104°44'31.299"W	0.43	TIE ONTO CATHEDRAL MWD SURVEYS
1762.00	7.510	180.660	1747.87	-188.76	-189.50	18.04	40°03'34.375"N	104°44'31.296"W	1.52	BEGIN BHI MWD+IFR SURVEYS
1857.00	9.610	180.000	1841.81	-202.89	-203.64	17.97	40°03'34.236"N	104°44'31.297"W	2.21	
1953.00	11.040	180.260	1936.25	-220.08	-220.85	17.93	40°03'34.066"N	104°44'31.297"W	1.49	
2048.00	12.050	175.210	2029.33	-239.02	-239.83	18.71	40°03'33.878"N	104°44'31.287"W	1.50	
2143.00	11.630	175.330	2122.31	-258.38	-259.25	20.32	40°03'33.686"N	104°44'31.267"W	0.44	
2238.00	11.580	172.020	2215.37	-277.28	-278.24	22.43	40°03'33.498"N	104°44'31.240"W	0.70	
2333.00	12.070	173.460	2308.35	-296.50	-297.55	24.88	40°03'33.308"N	104°44'31.208"W	0.60	
2428.00	11.340	172.950	2401.38	-315.54	-316.69	27.16	40°03'33.118"N	104°44'31.179"W	0.78	
2523.00	11.780	170.430	2494.45	-334.27	-335.52	29.92	40°03'32.932"N	104°44'31.143"W	0.70	
2619.00	12.100	172.620	2588.37	-353.79	-355.16	32.84	40°03'32.738"N	104°44'31.106"W	0.58	
2714.00	11.530	169.120	2681.36	-372.87	-374.36	35.91	40°03'32.549"N	104°44'31.066"W	0.96	
2809.00	11.590	168.860	2774.44	-391.42	-393.04	39.55	40°03'32.364"N	104°44'31.019"W	0.08	
2903.00	11.150	172.660	2866.59	-409.59	-411.32	42.53	40°03'32.183"N	104°44'30.981"W	0.92	
2998.00	10.890	176.560	2959.84	-427.58	-429.39	44.24	40°03'32.005"N	104°44'30.959"W	0.83	
3093.00	11.440	172.760	3053.04	-445.82	-447.70	45.97	40°03'31.824"N	104°44'30.937"W	0.97	
3189.00	11.610	169.030	3147.11	-464.63	-466.62	49.01	40°03'31.637"N	104°44'30.898"W	0.80	
3284.00	12.050	168.900	3240.09	-483.60	-485.74	52.73	40°03'31.448"N	104°44'30.850"W	0.46	
3380.00	11.460	169.710	3334.08	-502.68	-504.96	56.37	40°03'31.258"N	104°44'30.803"W	0.64	
3474.00	11.500	169.360	3426.20	-520.94	-523.35	59.77	40°03'31.076"N	104°44'30.759"W	0.09	
3569.00	11.380	169.510	3519.31	-539.33	-541.88	63.22	40°03'30.893"N	104°44'30.715"W	0.13	
3664.00	11.810	167.670	3612.37	-557.90	-560.59	67.00	40°03'30.708"N	104°44'30.666"W	0.60	
3759.00	12.300	168.680	3705.28	-577.17	-580.01	71.07	40°03'30.516"N	104°44'30.614"W	0.56	
3855.00	11.100	165.900	3799.28	-596.00	-599.00	75.32	40°03'30.329"N	104°44'30.559"W	1.38	
3950.00	11.030	162.820	3892.52	-613.37	-616.55	80.24	40°03'30.155"N	104°44'30.496"W	0.63	
4045.00	11.450	166.890	3985.70	-631.06	-634.42	85.06	40°03'29.979"N	104°44'30.434"W	0.94	

REFERENCE WELLPATH IDENTIFICATION			
Operator	KERR-MCGEE OIL & GAS ONSHORE LP (LAMBERT STATE PLANE COORD)	Slot	SLOT#06 GRISWOLD 2C-11HZ (560'FSL & 2013'FEL, SEC.11)
Area	COLORADO	Well	GRISWOLD 2C-11HZ
Field	WELD COUNTY (KERR MCGEE)	Wellbore	GRISWOLD 2C-11HZ AWB <122-13113>
Facility	SEC.11-T1N-R66W		

WELLPATH DATA (138 stations) † = interpolated/extrapolated station										
MD [ft]	Inclination [°]	Azimuth [°]	TVD [ft]	Vert Sect [ft]	North [ft]	East [ft]	Latitude	Longitude	DLS [°/100ft]	Comments
4140.00	12.530	170.360	4078.62	-650.25	-653.76	88.92	40°03'29.787"N	104°44'30.384"W	1.37	
4235.00	12.310	164.120	4171.40	-669.98	-673.66	93.42	40°03'29.591"N	104°44'30.327"W	1.43	
4330.00	12.910	173.740	4264.12	-690.13	-693.96	97.35	40°03'29.390"N	104°44'30.276"W	2.30	
4425.00	13.190	172.820	4356.67	-711.33	-715.26	99.86	40°03'29.180"N	104°44'30.244"W	0.37	
4520.00	14.100	168.970	4448.99	-733.30	-737.37	103.43	40°03'28.961"N	104°44'30.198"W	1.35	
4616.00	12.860	167.910	4542.34	-755.06	-759.30	107.91	40°03'28.744"N	104°44'30.140"W	1.32	
4711.00	10.930	169.570	4635.30	-774.11	-778.49	111.75	40°03'28.555"N	104°44'30.091"W	2.06	
4806.00	9.940	179.470	4728.73	-791.10	-795.55	113.46	40°03'28.386"N	104°44'30.069"W	2.15	
4901.00	10.560	189.760	4822.22	-807.92	-812.33	112.06	40°03'28.220"N	104°44'30.087"W	2.03	
4996.00	12.190	180.130	4915.36	-826.57	-830.94	110.56	40°03'28.036"N	104°44'30.106"W	2.63	
5091.00	13.270	177.890	5008.03	-847.47	-851.87	110.94	40°03'27.830"N	104°44'30.101"W	1.25	
5186.00	11.720	177.150	5100.77	-867.96	-872.40	111.82	40°03'27.627"N	104°44'30.090"W	1.64	
5281.00	10.690	170.500	5193.97	-886.21	-890.73	113.75	40°03'27.446"N	104°44'30.065"W	1.74	
5376.00	10.960	173.260	5287.28	-903.77	-908.39	116.27	40°03'27.271"N	104°44'30.033"W	0.62	
5471.00	10.610	160.110	5380.61	-920.81	-925.59	120.30	40°03'27.101"N	104°44'29.981"W	2.61	
5566.00	11.190	167.740	5473.90	-937.86	-942.82	125.24	40°03'26.931"N	104°44'29.917"W	1.64	
5661.00	12.260	172.990	5566.92	-956.76	-961.84	128.42	40°03'26.743"N	104°44'29.876"W	1.59	
5756.00	10.880	172.240	5659.99	-975.56	-980.73	130.87	40°03'26.556"N	104°44'29.845"W	1.46	
5851.00	10.070	180.360	5753.41	-992.70	-997.92	132.02	40°03'26.386"N	104°44'29.830"W	1.77	
5946.00	10.480	172.970	5846.89	-1009.53	-1014.80	133.03	40°03'26.219"N	104°44'29.817"W	1.45	
6042.00	7.110	168.280	5941.75	-1023.93	-1029.29	135.31	40°03'26.076"N	104°44'29.788"W	3.59	
6137.00	7.940	171.440	6035.93	-1036.09	-1041.54	137.48	40°03'25.955"N	104°44'29.760"W	0.98	
6232.00	6.080	168.850	6130.22	-1047.44	-1052.96	139.43	40°03'25.842"N	104°44'29.735"W	1.99	
6327.00	3.970	174.470	6224.85	-1055.60	-1061.17	140.72	40°03'25.761"N	104°44'29.718"W	2.28	
6422.00	2.920	169.850	6319.67	-1061.23	-1066.83	141.46	40°03'25.705"N	104°44'29.709"W	1.14	
6517.00	1.370	172.370	6414.61	-1064.71	-1070.34	142.04	40°03'25.671"N	104°44'29.701"W	1.63	
6612.00	0.220	275.720	6509.60	-1065.82	-1071.44	142.01	40°03'25.660"N	104°44'29.702"W	1.51	
6707.00	0.410	199.820	6604.60	-1066.13	-1071.75	141.71	40°03'25.657"N	104°44'29.706"W	0.44	
6802.00	0.760	169.650	6699.59	-1067.07	-1072.68	141.71	40°03'25.647"N	104°44'29.706"W	0.48	
6898.00	4.340	5.610	6795.51	-1064.07	-1069.69	142.18	40°03'25.677"N	104°44'29.700"W	5.29	
6993.00	7.630	13.620	6889.98	-1054.30	-1059.98	144.01	40°03'25.773"N	104°44'29.676"W	3.56	
7088.00	9.860	11.770	6983.87	-1040.10	-1045.89	147.16	40°03'25.912"N	104°44'29.635"W	2.37	
7183.00	17.780	12.670	7076.05	-1017.80	-1023.74	152.01	40°03'26.131"N	104°44'29.573"W	8.34	
7278.00	22.280	7.270	7165.29	-985.59	-991.71	157.47	40°03'26.448"N	104°44'29.503"W	5.12	
7374.00	28.240	6.800	7252.07	-944.80	-951.06	162.47	40°03'26.849"N	104°44'29.439"W	6.21	
7469.00	37.470	1.930	7331.80	-893.39	-899.75	166.11	40°03'27.356"N	104°44'29.392"W	10.10	
7563.00	47.770	0.750	7400.88	-829.83	-836.20	167.53	40°03'27.984"N	104°44'29.373"W	10.99	
7658.00	56.370	358.920	7459.22	-755.03	-761.34	167.25	40°03'28.724"N	104°44'29.377"W	9.18	
7754.00	63.040	359.400	7507.62	-672.29	-678.51	166.04	40°03'29.543"N	104°44'29.393"W	6.96	
7849.00	75.800	355.960	7540.96	-583.81	-589.85	162.34	40°03'30.419"N	104°44'29.440"W	13.85	
7944.00	76.080	354.970	7564.04	-492.26	-497.99	155.05	40°03'31.327"N	104°44'29.534"W	1.05	
8039.00	83.010	355.330	7581.27	-399.56	-404.96	147.16	40°03'32.246"N	104°44'29.635"W	7.30	
8132.00†	88.981	359.814	7587.76	-307.13	-312.33	143.25	40°03'33.161"N	104°44'29.686"W	8.02	TOP OF PRODUCTION
8134.00	89.110	359.910	7587.79	-305.13	-310.33	143.24	40°03'33.181"N	104°44'29.686"W	8.02	
8229.00	89.440	0.010	7589.00	-210.20	-215.34	143.18	40°03'34.120"N	104°44'29.687"W	0.36	

REFERENCE WELLPATH IDENTIFICATION			
Operator	KERR-MCGEE OIL & GAS ONSHORE LP (LAMBERT STATE PLANE COORD)	Slot	SLOT#06 GRISWOLD 2C-11HZ (560'FSL & 2013'FEL, SEC.11)
Area	COLORADO	Well	GRISWOLD 2C-11HZ
Field	WELD COUNTY (KERR MCGEE)	Wellbore	GRISWOLD 2C-11HZ AWB <122-13113>
Facility	SEC.11-T1N-R66W		

WELLPATH DATA (138 stations)										
MD [ft]	Inclination [°]	Azimuth [°]	TVD [ft]	Vert Sect [ft]	North [ft]	East [ft]	Latitude	Longitude	DLS [°/100ft]	Comments
8324.00	89.540	0.440	7589.84	-115.25	-120.34	143.55	40°03'35.059"N	104°44'29.682"W	0.46	
8419.00	88.860	0.010	7591.17	-20.31	-25.35	143.92	40°03'35.997"N	104°44'29.677"W	0.85	
8514.00	90.150	0.370	7591.99	74.64	69.64	144.24	40°03'36.936"N	104°44'29.673"W	1.41	
8609.00	91.260	0.360	7590.82	169.59	164.63	144.84	40°03'37.875"N	104°44'29.665"W	1.17	
8704.00	90.740	1.000	7589.16	264.55	259.61	145.97	40°03'38.813"N	104°44'29.651"W	0.87	
8800.00	90.370	0.970	7588.23	360.53	355.59	147.62	40°03'39.762"N	104°44'29.629"W	0.39	
8894.00	90.000	0.960	7587.93	454.52	449.57	149.20	40°03'40.691"N	104°44'29.609"W	0.39	
8990.00	91.330	1.740	7586.81	550.50	545.54	151.47	40°03'41.639"N	104°44'29.580"W	1.61	
9085.00	91.320	2.730	7584.62	645.47	640.44	155.17	40°03'42.577"N	104°44'29.532"W	1.04	
9180.00	90.550	359.580	7583.07	740.44	735.39	157.08	40°03'43.515"N	104°44'29.508"W	3.41	
9275.00	90.210	359.700	7582.44	835.36	830.39	156.49	40°03'44.454"N	104°44'29.515"W	0.38	
9370.00	90.270	0.440	7582.04	930.30	925.39	156.60	40°03'45.393"N	104°44'29.514"W	0.78	
9466.00	90.120	1.030	7581.71	1026.27	1021.38	157.83	40°03'46.341"N	104°44'29.498"W	0.63	
9561.00	89.960	1.460	7581.65	1121.27	1116.36	159.90	40°03'47.280"N	104°44'29.471"W	0.48	
9655.00	89.500	359.140	7582.09	1215.22	1210.35	160.39	40°03'48.209"N	104°44'29.465"W	2.52	
9750.00	89.160	358.640	7583.20	1310.07	1305.32	158.55	40°03'49.147"N	104°44'29.489"W	0.64	
9845.00	89.720	358.590	7584.13	1404.90	1400.29	156.25	40°03'50.086"N	104°44'29.518"W	0.59	
9940.00	89.900	1.010	7584.44	1499.82	1495.28	155.92	40°03'51.025"N	104°44'29.523"W	2.55	
10035.00	90.460	358.800	7584.14	1594.75	1590.28	155.77	40°03'51.963"N	104°44'29.525"W	2.40	
10130.00	91.140	359.540	7582.82	1689.62	1685.26	154.39	40°03'52.902"N	104°44'29.542"W	1.06	
10225.00	91.040	359.940	7581.01	1784.53	1780.24	153.96	40°03'53.841"N	104°44'29.548"W	0.43	
10320.00	89.630	359.850	7580.46	1879.46	1875.23	153.78	40°03'54.779"N	104°44'29.550"W	1.49	
10415.00	89.500	359.780	7581.18	1974.39	1970.23	153.48	40°03'55.718"N	104°44'29.554"W	0.16	
10509.00	89.200	359.810	7582.24	2068.32	2064.22	153.14	40°03'56.647"N	104°44'29.558"W	0.32	
10604.00	88.730	0.480	7583.96	2163.25	2159.21	153.38	40°03'57.586"N	104°44'29.555"W	0.86	
10700.00	90.830	0.640	7584.33	2259.21	2255.20	154.32	40°03'58.534"N	104°44'29.543"W	2.19	
10795.00	90.400	1.330	7583.31	2354.19	2350.18	155.95	40°03'59.473"N	104°44'29.522"W	0.86	
10890.00	89.290	0.710	7583.57	2449.18	2445.16	157.64	40°04'00.412"N	104°44'29.500"W	1.34	
10985.00	90.120	0.360	7584.05	2544.14	2540.15	158.53	40°04'01.350"N	104°44'29.489"W	0.95	
11080.00	89.750	0.380	7584.16	2639.10	2635.15	159.14	40°04'02.289"N	104°44'29.481"W	0.39	
11174.00	89.230	1.160	7585.00	2733.08	2729.14	160.41	40°04'03.218"N	104°44'29.465"W	1.00	
11269.00	89.260	359.790	7586.25	2828.03	2824.12	161.20	40°04'04.157"N	104°44'29.455"W	1.44	
11364.00	89.010	359.650	7587.68	2922.95	2919.11	160.73	40°04'05.095"N	104°44'29.461"W	0.30	
11459.00	90.580	1.000	7588.02	3017.90	3014.10	161.27	40°04'06.034"N	104°44'29.454"W	2.18	
11554.00	90.370	0.990	7587.24	3112.88	3109.09	162.92	40°04'06.973"N	104°44'29.432"W	0.22	
11649.00	91.010	0.420	7586.09	3207.85	3204.07	164.09	40°04'07.911"N	104°44'29.417"W	0.90	
11744.00	90.680	359.980	7584.69	3302.79	3299.06	164.42	40°04'08.850"N	104°44'29.413"W	0.58	
11839.00	90.710	0.060	7583.54	3397.73	3394.05	164.45	40°04'09.789"N	104°44'29.413"W	0.09	
11934.00	90.430	0.370	7582.59	3492.68	3489.05	164.81	40°04'10.727"N	104°44'29.408"W	0.44	
12029.00	90.000	0.410	7582.24	3587.64	3584.04	165.46	40°04'11.666"N	104°44'29.400"W	0.45	
12125.00	89.910	0.430	7582.31	3683.60	3680.04	166.16	40°04'12.615"N	104°44'29.391"W	0.10	
12315.00	89.290	0.780	7583.64	3873.54	3870.02	168.17	40°04'14.492"N	104°44'29.365"W	0.37	
12410.00	90.710	0.730	7583.64	3968.51	3965.01	169.42	40°04'15.431"N	104°44'29.349"W	1.50	
12600.00	90.430	0.520	7581.75	4158.45	4154.99	171.49	40°04'17.309"N	104°44'29.322"W	0.18	
12791.00	88.890	357.500	7582.88	4349.16	4345.93	168.19	40°04'19.195"N	104°44'29.365"W	1.77	

REFERENCE WELLPATH IDENTIFICATION			
Operator	KERR-MCGEE OIL & GAS ONSHORE LP (LAMBERT STATE PLANE COORD)	Slot	SLOT#06 GRISWOLD 2C-11HZ (560'FSL & 2013'FEL, SEC.11)
Area	COLORADO	Well	GRISWOLD 2C-11HZ
Field	WELD COUNTY (KERR MCGEE)	Wellbore	GRISWOLD 2C-11HZ AWB <122-13113>
Facility	SEC.11-T1N-R66W		

WELLPATH DATA (138 stations)										
MD [ft]	Inclination [°]	Azimuth [°]	TVD [ft]	Vert Sect [ft]	North [ft]	East [ft]	Latitude	Longitude	DLS ["/100ft]	Comments
12886.00	89.850	359.490	7583.93	4443.97	4440.89	165.70	40°04'20.134"N	104°44'29.397"W	2.33	
13060.00	89.140	359.350	7585.46	4617.78	4614.87	163.94	40°04'21.853"N	104°44'29.419"W	0.42	LAST BHI MWD+IFR SURVEY
13113.00	89.140	359.350	7586.26	4670.72	4667.86	163.33	40°04'22.377"N	104°44'29.427"W	0.00	PROJECTION TO BIT

HOLE & CASING SECTIONS - Ref Wellbore: GRISWOLD 2C-11HZ AWB <122-13113> Ref Wellpath: GRISWOLD 2C-11HZ AWP										
String/Diameter	Start MD [ft]	End MD [ft]	Interval [ft]	Start TVD [ft]	End TVD [ft]	Start N/S [ft]	Start E/W [ft]	End N/S [ft]	End E/W [ft]	
13.5in Open Hole	16.00	1789.00	1773.00	16.00	1774.62	0.00	0.00	-193.17	18.01	
9.625in Casing Surface	16.00	1779.00	1763.00	16.00	1764.72	0.00	0.00	-191.78	18.02	
7.875in Open Hole	1789.00	13113.00	11324.00	1774.62	7586.26	-193.17	18.01	4667.86	163.33	

WELLPATH COMPOSITION - Ref Wellbore: GRISWOLD 2C-11HZ AWB <122-13113> Ref Wellpath: GRISWOLD 2C-11HZ AWP					
Start MD [ft]	End MD [ft]	Positional Uncertainty Model	Log Name/Comment	Wellbore	
16.00	1702.00	ISCWSA MWD, Rev. 2 (Standard)	CATHEDRAL MWD SURVEYS <122-1702>	GRISWOLD 2C-11HZ AWB <122-13113>	
1702.00	13060.00	NaviTrak (MAGCORR,IFR)	BHI MWD+IFR SURVEYS 7 7/8" <1762-13060>	GRISWOLD 2C-11HZ AWB <122-13113>	
13060.00	13113.00	Blind Drilling (std)	Projection to bit	GRISWOLD 2C-11HZ AWB <122-13113>	

# Actual Wellpath Report

GRISWOLD 2C-11HZ AWP

Page 6 of 6

REFERENCE WELLPATH IDENTIFICATION			
Operator	KERR-MCGEE OIL & GAS ONSHORE LP (LAMBERT STATE PLANE COORD)	Slot	SLOT#06 GRISWOLD 2C-11HZ (560'FSL & 2013'FEL, SEC.11)
Area	COLORADO	Well	GRISWOLD 2C-11HZ
Field	WELD COUNTY (KERR MCGEE)	Wellbore	GRISWOLD 2C-11HZ AWB <122-13113>
Facility	SEC.11-T1N-R66W		

WELLPATH COMMENTS				
MD [ft]	Inclination [°]	Azimuth [°]	TVD [ft]	Comment
16.00	0.000	321.300	16.00	TIE ON
122.00	0.300	321.300	122.00	BEGIN CATHEDRAL MWD SURVEYS
1702.00	8.200	176.300	1688.44	TIE ONTO CATHEDRAL MWD SURVEYS
1762.00	7.510	180.660	1747.87	BEGIN BHI MWD+IFR SURVEYS
8132.00	88.981	359.814	7587.76	TOP OF PRODUCTION
13060.00	89.140	359.350	7585.46	LAST BHI MWD+IFR SURVEY
13113.00	89.140	359.350	7586.26	PROJECTION TO BIT