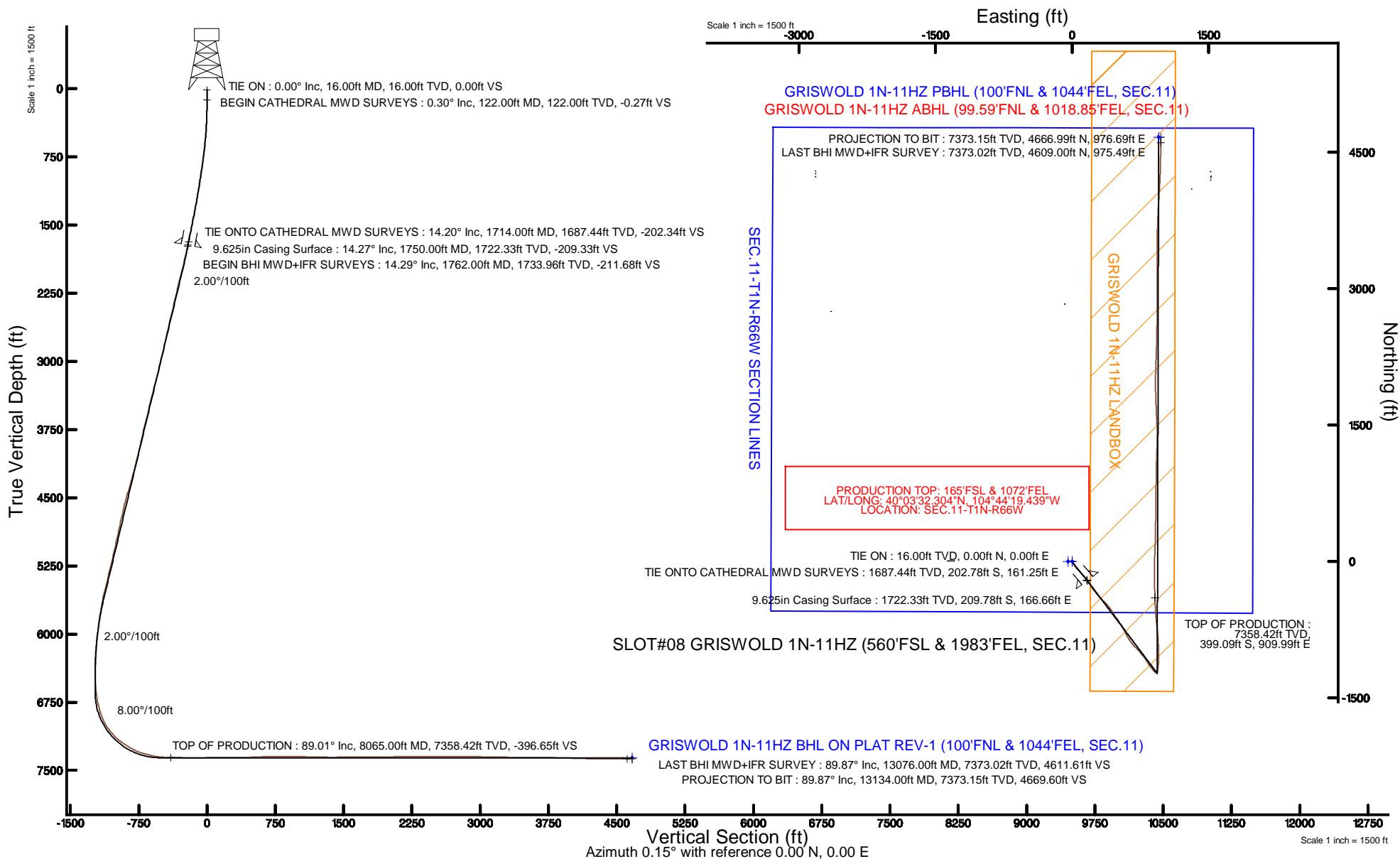


Location:	COLORADO	Slot:	SLOT#08 GRISWOLD 1N-11HZ (560'FSL & 1983'FEL, SEC.11)
Field:	WELD COUNTY (KERR MCGEE)	Well:	GRISWOLD 1N-11HZ
Facility:	SEC.11-T1N-R66W	Wellbore:	GRISWOLD 1N-11HZ PWB

True vertical depths are referenced to XTREME 24 (16KB) (RKB)	Grid System: NAD83 / Lambert Colorado SP, Northern Zone (501), US feet
Measured depths are referenced to XTREME 24 (16KB) (RKB)	North Reference: True north
XTREME 24 (16KB) (RKB) to Mean Sea Level: 5141 feet	Scale: True distance
Mean Sea Level to Mud line (At Slot: SLOT#08 GRISWOLD 1N-11HZ (560FSL & 1983FEL, SEC.11)): 0 feet	Depths are in feet
Coordinates are in feet referenced to Siot	Created by: robiale01 on 3/11/2015



REFERENCE WELLPATH IDENTIFICATION

Operator	KERR-MCGEE OIL & GAS ONSHORE LP (LAMBERT STATE PLANE COORD)	Slot	SLOT#08 GRISWOLD 1N-11HZ (560'FSL & 1983'FEL, SEC.11)
Area	COLORADO	Well	GRISWOLD 1N-11HZ
Field	WELD COUNTY (KERR MCGEE)	Wellbore	GRISWOLD 1N-11HZ AWP <122-13134>
Facility	SEC.11-T1N-R66W		

REPORT SETUP INFORMATION

Projection System	NAD83 / Lambert Colorado SP, Northern Zone (501), US feet	Software System	WellArchitect® 4.1.1
North Reference	True	User	Robiale01
Scale	0.999962	Report Generated	3/11/2015 at 4:27:37 PM
Convergence at slot	0.49° East	Database/Source file	WellArchitectDB/GRISWOLD_1N-11HZ_AWP_122-13134_.xml

WELLPATH LOCATION

	Local coordinates		Grid coordinates		Geographic coordinates	
	North[ft]	East[ft]	Easting[US ft]	Northing[US ft]	Latitude	Longitude
Slot Location	-4234.02	2815.20	3212171.30	1265635.28	40°03'36.248"N	104°44'31.142"W
Facility Reference Pt			3209320.61	1269845.23	40°04'18.091"N	104°45'07.348"W
Field Reference Pt			3197771.84	1268891.29	40°04'09.600"N	104°47'36.000"W

WELLPATH DATUM

Calculation method	Minimum curvature	XTREME 24 (16'KB) (RKB) to Facility Vertical Datum	5141.00ft
Horizontal Reference Pt	Slot	XTREME 24 (16'KB) (RKB) to Mean Sea Level	5141.00ft
Vertical Reference Pt	XTREME 24 (16'KB) (RKB)	XTREME 24 (16'KB) (RKB) to Mud Line at Slot (SLOT#08 GRISWOLD 1N-11HZ (560'FSL & 1983'FEL, SEC.11))	5141.00ft
MD Reference Pt	XTREME 24 (16'KB) (RKB)	Section Origin	N 0.00, E 0.00 ft
Field Vertical Reference	Mean Sea Level	Section Azimuth	11.82°

REFERENCE WELLPATH IDENTIFICATION

Operator	KERR-MCGEE OIL & GAS ONSHORE LP (LAMBERT STATE PLANE COORD)	Slot	SLOT#08 GRISWOLD 1N-11HZ (560'FSL & 1983'FEL, SEC.11)
Area	COLORADO	Well	GRISWOLD 1N-11HZ
Field	WELD COUNTY (KERR MCGEE)	Wellbore	GRISWOLD 1N-11HZ AWP <122-13134>
Facility	SEC.11-T1N-R66W		

WELLPATH DATA (142 stations) † = interpolated/extrapolated station

MD [ft]	Inclination [°]	Azimuth [°]	TVD [ft]	Vert Sect [ft]	North [ft]	East [ft]	Latitude	Longitude	DLS [°/100ft]	Comments
0.00†	0.000	194.500	0.00	0.00	0.00	0.00	40°03'36.248"N	104°44'31.142"W	0.00	
16.00	0.000	194.500	16.00	0.00	0.00	0.00	40°03'36.248"N	104°44'31.142"W	0.00	TIE ON
122.00	0.300	194.500	122.00	-0.28	-0.27	-0.07	40°03'36.245"N	104°44'31.143"W	0.28	BEGIN CATHEDRAL MWD SURVEYS
211.00	0.400	174.400	211.00	-0.81	-0.80	-0.10	40°03'36.240"N	104°44'31.143"W	0.18	
297.00	1.900	160.000	296.98	-2.30	-2.44	0.42	40°03'36.224"N	104°44'31.137"W	1.76	
385.00	3.300	143.100	384.89	-5.22	-5.84	2.44	40°03'36.190"N	104°44'31.111"W	1.80	
474.00	5.400	139.000	473.63	-9.44	-11.05	6.73	40°03'36.139"N	104°44'31.056"W	2.38	
569.00	7.000	143.000	568.07	-15.95	-19.05	13.14	40°03'36.060"N	104°44'30.973"W	1.74	
663.00	8.400	143.900	661.22	-24.32	-29.17	20.64	40°03'35.960"N	104°44'30.877"W	1.49	
760.00	8.600	145.900	757.15	-34.12	-40.90	28.88	40°03'35.844"N	104°44'30.771"W	0.37	
854.00	9.800	143.800	849.94	-44.36	-53.17	37.54	40°03'35.723"N	104°44'30.659"W	1.33	
950.00	10.900	140.800	944.38	-55.53	-66.80	48.10	40°03'35.588"N	104°44'30.523"W	1.28	
1046.00	11.700	140.000	1038.52	-67.26	-81.29	60.10	40°03'35.445"N	104°44'30.369"W	0.85	
1142.00	12.200	140.500	1132.44	-79.61	-96.58	72.81	40°03'35.294"N	104°44'30.206"W	0.53	
1235.00	13.300	138.800	1223.14	-92.19	-112.21	86.10	40°03'35.139"N	104°44'30.035"W	1.25	
1330.00	14.200	137.900	1315.42	-105.63	-129.08	101.11	40°03'34.972"N	104°44'29.842"W	0.97	
1426.00	14.500	139.100	1408.42	-119.84	-146.90	116.88	40°03'34.796"N	104°44'29.639"W	0.44	
1522.00	14.300	140.900	1501.41	-134.59	-165.18	132.22	40°03'34.616"N	104°44'29.442"W	0.51	
1616.00	14.400	143.200	1592.48	-149.64	-183.55	146.55	40°03'34.434"N	104°44'29.257"W	0.62	
1714.00	14.200	142.000	1687.44	-165.45	-202.78	161.25	40°03'34.244"N	104°44'29.068"W	0.36	TIE ONTO CATHEDRAL MWD SURVEYS
1762.00	14.290	142.670	1733.96	-173.12	-212.13	168.46	40°03'34.152"N	104°44'28.975"W	0.39	BEGIN BHI MWD+IFR SURVEYS
1857.00	15.670	149.650	1825.74	-190.30	-232.53	182.06	40°03'33.950"N	104°44'28.801"W	2.39	
1952.00	17.400	145.130	1916.81	-209.56	-255.25	196.66	40°03'33.726"N	104°44'28.613"W	2.27	
2047.00	16.910	145.040	2007.59	-228.76	-278.23	212.70	40°03'33.498"N	104°44'28.407"W	0.52	
2142.00	16.750	143.890	2098.52	-247.40	-300.61	228.68	40°03'33.277"N	104°44'28.201"W	0.39	
2237.00	16.780	142.140	2189.48	-265.44	-322.50	245.17	40°03'33.061"N	104°44'27.989"W	0.53	
2332.00	16.530	142.250	2280.49	-283.08	-344.01	261.86	40°03'32.848"N	104°44'27.774"W	0.27	
2427.00	16.300	138.930	2371.62	-299.89	-364.75	278.89	40°03'32.643"N	104°44'27.555"W	1.02	
2523.00	17.980	139.500	2463.36	-317.07	-386.17	297.37	40°03'32.432"N	104°44'27.318"W	1.76	
2618.00	17.950	136.500	2553.73	-334.37	-407.94	316.97	40°03'32.217"N	104°44'27.066"W	0.97	
2713.00	17.390	133.580	2644.25	-350.17	-428.35	337.33	40°03'32.015"N	104°44'26.804"W	1.10	
2808.00	17.760	134.780	2734.81	-365.52	-448.34	357.90	40°03'31.817"N	104°44'26.539"W	0.55	
2903.00	16.420	136.680	2825.62	-381.08	-468.32	377.39	40°03'31.620"N	104°44'26.288"W	1.53	
2998.00	17.010	140.950	2916.61	-397.53	-488.88	395.36	40°03'31.417"N	104°44'26.057"W	1.43	
3093.00	16.830	143.550	3007.49	-415.45	-510.73	412.29	40°03'31.201"N	104°44'25.840"W	0.82	
3188.00	17.590	148.150	3098.24	-434.99	-533.99	428.03	40°03'30.971"N	104°44'25.637"W	1.64	
3284.00	17.230	146.430	3189.85	-455.47	-558.16	443.55	40°03'30.732"N	104°44'25.438"W	0.65	
3379.00	16.900	146.460	3280.66	-475.05	-581.39	458.96	40°03'30.503"N	104°44'25.240"W	0.35	
3473.00	16.750	144.670	3370.64	-493.86	-603.83	474.34	40°03'30.281"N	104°44'25.042"W	0.57	
3569.00	16.330	143.280	3462.67	-512.21	-625.93	490.41	40°03'30.062"N	104°44'24.835"W	0.60	
3664.00	16.210	146.230	3553.87	-530.33	-647.66	505.77	40°03'29.848"N	104°44'24.638"W	0.88	
3759.00	16.860	146.990	3644.94	-549.38	-670.24	520.64	40°03'29.625"N	104°44'24.446"W	0.72	
3854.00	15.610	146.660	3736.15	-568.16	-692.47	535.17	40°03'29.405"N	104°44'24.259"W	1.32	
3949.00	14.390	144.710	3827.91	-585.21	-712.78	549.02	40°03'29.204"N	104°44'24.081"W	1.39	
4044.00	13.990	155.060	3920.02	-602.45	-732.84	560.68	40°03'29.006"N	104°44'23.931"W	2.70	

Actual Wellpath Report

GRISWOLD 1N-11HZ AWP
Page 3 of 6

REFERENCE WELLPATH IDENTIFICATION

Operator	KERR-MCGEE OIL & GAS ONSHORE LP (LAMBERT STATE PLANE COORD)	Slot	SLOT#08 GRISWOLD 1N-11HZ (560'FSL & 1983'FEL, SEC.11)
Area	COLORADO	Well	GRISWOLD 1N-11HZ
Field	WELD COUNTY (KERR MCGEE)	Wellbore	GRISWOLD 1N-11HZ AWP <122-13134>
Facility	SEC.11-T1N-R66W		

WELLPATH DATA (142 stations) † = interpolated/extrapolated station

MD [ft]	Inclination [°]	Azimuth [°]	TVD [ft]	Vert Sect [ft]	North [ft]	East [ft]	Latitude	Longitude	DLS [°/100ft]	Comments
4139.00	14.860	155.140	4012.03	-621.42	-754.30	570.65	40°03'28.794"N	104°44'23.803"W	0.92	
4234.00	15.520	152.530	4103.71	-641.02	-776.63	581.63	40°03'28.573"N	104°44'23.662"W	1.00	
4329.00	16.390	151.870	4195.05	-661.14	-799.73	593.81	40°03'28.345"N	104°44'23.505"W	0.94	
4425.00	18.600	151.320	4286.60	-683.16	-825.11	607.55	40°03'28.094"N	104°44'23.329"W	2.31	
4520.00	18.710	148.260	4376.61	-705.73	-851.36	622.83	40°03'27.835"N	104°44'23.132"W	1.04	
4615.00	19.020	144.250	4466.52	-727.21	-876.88	639.90	40°03'27.582"N	104°44'22.913"W	1.40	
4710.00	17.610	143.870	4556.70	-747.28	-901.05	657.41	40°03'27.344"N	104°44'22.687"W	1.49	
4805.00	17.720	137.050	4647.23	-765.25	-923.24	675.74	40°03'27.124"N	104°44'22.452"W	2.18	
4900.00	18.270	133.960	4737.59	-781.51	-944.16	696.31	40°03'26.917"N	104°44'22.187"W	1.16	
4995.00	16.550	135.340	4828.23	-796.91	-964.13	716.54	40°03'26.720"N	104°44'21.927"W	1.86	
5090.00	17.010	136.490	4919.19	-812.28	-983.83	735.62	40°03'26.525"N	104°44'21.682"W	0.60	
5185.00	15.200	144.450	5010.46	-828.63	-1004.04	752.43	40°03'26.326"N	104°44'21.465"W	3.00	
5281.00	16.370	139.440	5102.85	-845.41	-1024.56	768.54	40°03'26.123"N	104°44'21.258"W	1.87	
5376.00	16.750	141.480	5193.91	-862.32	-1045.44	785.78	40°03'25.917"N	104°44'21.037"W	0.73	
5470.00	16.090	145.080	5284.08	-879.89	-1066.72	801.67	40°03'25.706"N	104°44'20.832"W	1.29	
5566.00	16.250	147.910	5376.28	-898.68	-1089.01	816.42	40°03'25.486"N	104°44'20.643"W	0.84	
5660.00	16.590	148.040	5466.45	-917.85	-1111.54	830.51	40°03'25.263"N	104°44'20.461"W	0.36	
5756.00	15.140	145.990	5558.79	-936.48	-1133.56	844.78	40°03'25.046"N	104°44'20.278"W	1.62	
5851.00	13.590	143.610	5650.81	-952.56	-1152.83	858.34	40°03'24.855"N	104°44'20.103"W	1.75	
5946.00	11.900	142.200	5743.47	-966.35	-1169.55	870.96	40°03'24.690"N	104°44'19.941"W	1.81	
6041.00	10.710	140.110	5836.63	-978.16	-1184.07	882.63	40°03'24.547"N	104°44'19.791"W	1.32	
6136.00	8.980	140.020	5930.22	-988.22	-1196.52	893.06	40°03'24.424"N	104°44'19.657"W	1.82	
6232.00	8.030	134.930	6025.17	-996.52	-1207.00	902.62	40°03'24.320"N	104°44'19.534"W	1.26	
6327.00	6.890	130.210	6119.36	-1002.85	-1215.36	911.67	40°03'24.237"N	104°44'19.418"W	1.36	
6421.00	5.590	129.070	6212.80	-1007.63	-1221.89	919.53	40°03'24.173"N	104°44'19.317"W	1.39	
6517.00	3.960	112.620	6308.47	-1010.39	-1226.11	926.22	40°03'24.131"N	104°44'19.231"W	2.20	
6612.00	1.210	111.280	6403.37	-1011.17	-1227.74	930.18	40°03'24.115"N	104°44'19.180"W	2.90	
6707.00	1.290	104.090	6498.34	-1011.38	-1228.36	932.15	40°03'24.109"N	104°44'19.154"W	0.19	
6802.00	5.550	18.170	6593.19	-1006.85	-1224.25	934.62	40°03'24.149"N	104°44'19.122"W	5.90	
6897.00	7.890	12.550	6687.53	-995.76	-1213.52	937.47	40°03'24.256"N	104°44'19.086"W	2.56	
6992.00	13.560	4.880	6780.83	-978.17	-1196.05	939.84	40°03'24.428"N	104°44'19.055"W	6.14	
7088.00	18.640	7.660	6873.04	-951.68	-1169.61	942.84	40°03'24.689"N	104°44'19.017"W	5.35	
7183.00	25.620	6.390	6960.99	-916.05	-1134.11	947.16	40°03'25.040"N	104°44'18.961"W	7.36	
7278.00	35.780	3.050	7042.57	-868.02	-1085.83	950.93	40°03'25.517"N	104°44'18.913"W	10.84	
7373.00	43.360	359.760	7115.76	-808.59	-1025.39	952.28	40°03'26.115"N	104°44'18.895"W	8.28	
7468.00	52.800	356.980	7179.16	-739.96	-954.83	950.14	40°03'26.812"N	104°44'18.923"W	10.17	
7563.00	58.100	357.790	7233.02	-664.21	-876.70	946.59	40°03'27.584"N	104°44'18.968"W	5.62	
7658.00	64.040	354.080	7278.97	-584.32	-793.83	940.62	40°03'28.403"N	104°44'19.045"W	7.12	
7753.00	73.550	353.370	7313.29	-500.23	-705.89	930.94	40°03'29.272"N	104°44'19.170"W	10.03	
7848.00	78.040	355.870	7336.60	-412.28	-614.23	922.33	40°03'30.178"N	104°44'19.280"W	5.37	
7944.00	83.740	356.030	7351.79	-321.14	-519.72	915.63	40°03'31.112"N	104°44'19.366"W	5.94	
8039.00	88.850	358.130	7357.93	-229.49	-425.08	910.81	40°03'32.047"N	104°44'19.428"W	5.81	
8065.00†	89.013	358.266	7358.42	-204.23	-399.09	909.99	40°03'32.304"N	104°44'19.439"W	0.82	TOP OF PRODUCTION
8133.00	89.440	358.620	7359.33	-138.08	-331.13	908.15	40°03'32.976"N	104°44'19.463"W	0.82	
8228.00	88.580	359.180	7360.97	-45.50	-236.16	906.32	40°03'33.914"N	104°44'19.486"W	1.08	

Actual Wellpath Report

GRISWOLD 1N-11HZ AWP
Page 4 of 6

REFERENCE WELLPATH IDENTIFICATION

Operator	KERR-MCGEE OIL & GAS ONSHORE LP (LAMBERT STATE PLANE COORD)	Slot	SLOT#08 GRISWOLD 1N-11HZ (560'FSL & 1983'FEL, SEC.11)
Area	COLORADO	Well	GRISWOLD 1N-11HZ
Field	WELD COUNTY (KERR MCGEE)	Wellbore	GRISWOLD 1N-11HZ AWP <122-13134>
Facility	SEC.11-T1N-R66W		

WELLPATH DATA (142 stations)

MD [ft]	Inclination [°]	Azimuth [°]	TVD [ft]	Vert Sect [ft]	North [ft]	East [ft]	Latitude	Longitude	DLS [°/100ft]	Comments
8323.00	90.490	358.810	7361.75	47.12	-141.18	904.66	40°03'34.853"N	104°44'19.507"W	2.05	
8418.00	91.010	1.810	7360.50	140.19	-46.20	905.17	40°03'35.791"N	104°44'19.501"W	3.20	
8513.00	90.210	1.040	7359.49	233.63	48.76	907.53	40°03'36.730"N	104°44'19.470"W	1.17	
8608.00	90.890	2.900	7358.58	327.22	143.70	910.80	40°03'37.668"N	104°44'19.428"W	2.08	
8704.00	89.440	1.800	7358.30	421.90	239.61	914.73	40°03'38.616"N	104°44'19.378"W	1.90	
8799.00	90.300	0.910	7358.52	515.32	334.58	916.98	40°03'39.554"N	104°44'19.349"W	1.30	
8894.00	91.940	0.060	7356.66	608.45	429.56	917.78	40°03'40.493"N	104°44'19.338"W	1.94	
8989.00	92.520	0.070	7352.96	701.38	524.48	917.89	40°03'41.431"N	104°44'19.337"W	0.61	
9084.00	91.750	0.750	7349.42	794.44	619.42	918.57	40°03'42.369"N	104°44'19.328"W	1.08	
9180.00	91.040	1.670	7347.09	888.77	715.36	920.60	40°03'43.317"N	104°44'19.302"W	1.21	
9275.00	89.720	0.460	7346.46	982.09	810.34	922.36	40°03'44.256"N	104°44'19.279"W	1.88	
9370.00	89.070	1.160	7347.46	1075.34	905.33	923.71	40°03'45.194"N	104°44'19.262"W	1.01	
9465.00	89.590	1.200	7348.57	1168.70	1000.30	925.66	40°03'46.133"N	104°44'19.237"W	0.55	
9560.00	88.420	1.190	7350.22	1262.05	1095.26	927.64	40°03'47.071"N	104°44'19.211"W	1.23	
9655.00	88.950	2.550	7352.40	1355.60	1190.18	930.74	40°03'48.009"N	104°44'19.171"W	1.54	
9750.00	88.800	1.640	7354.27	1449.21	1285.10	934.22	40°03'48.947"N	104°44'19.127"W	0.97	
9845.00	90.150	0.030	7355.14	1542.46	1380.08	935.60	40°03'49.886"N	104°44'19.109"W	2.21	
9939.00	90.640	357.600	7354.49	1634.04	1474.05	933.66	40°03'50.815"N	104°44'19.134"W	2.64	
10034.00	89.630	357.470	7354.27	1726.11	1568.96	929.57	40°03'51.753"N	104°44'19.186"W	1.07	
10129.00	90.430	357.540	7354.22	1818.15	1663.87	925.43	40°03'52.691"N	104°44'19.239"W	0.85	
10224.00	89.290	357.770	7354.45	1910.26	1758.79	921.55	40°03'53.629"N	104°44'19.289"W	1.22	
10319.00	90.330	357.750	7354.76	2002.42	1853.72	917.83	40°03'54.567"N	104°44'19.337"W	1.09	
10414.00	91.190	0.500	7353.50	2095.08	1948.69	916.38	40°03'55.505"N	104°44'19.356"W	3.03	
10509.00	92.750	0.920	7350.24	2188.24	2043.62	917.56	40°03'56.443"N	104°44'19.340"W	1.70	
10604.00	91.750	2.070	7346.51	2281.62	2138.51	920.04	40°03'57.381"N	104°44'19.308"W	1.60	
10699.00	89.690	2.100	7345.31	2375.24	2233.44	923.49	40°03'58.319"N	104°44'19.264"W	2.17	
10795.00	89.290	1.740	7346.17	2469.81	2329.38	926.71	40°03'59.267"N	104°44'19.223"W	0.56	
10890.00	89.290	1.570	7347.34	2563.31	2424.33	929.45	40°04'00.206"N	104°44'19.187"W	0.18	
10985.00	88.860	0.870	7348.88	2656.68	2519.30	931.48	40°04'01.144"N	104°44'19.161"W	0.86	
11080.00	90.860	1.150	7349.11	2749.99	2614.28	933.15	40°04'02.083"N	104°44'19.140"W	2.13	
11174.00	90.270	0.090	7348.18	2842.19	2708.26	934.17	40°04'03.011"N	104°44'19.126"W	1.29	
11269.00	89.960	359.540	7347.99	2935.11	2803.26	933.86	40°04'03.950"N	104°44'19.130"W	0.66	
11363.00	89.380	0.570	7348.53	3027.13	2897.26	933.95	40°04'04.879"N	104°44'19.129"W	1.26	
11459.00	89.100	358.870	7349.81	3120.99	2993.25	933.48	40°04'05.828"N	104°44'19.135"W	1.79	
11554.00	88.580	1.070	7351.73	3213.94	3088.22	933.43	40°04'06.766"N	104°44'19.136"W	2.38	
11649.00	89.410	0.550	7353.40	3307.18	3183.20	934.77	40°04'07.705"N	104°44'19.118"W	1.03	
11744.00	89.100	0.120	7354.63	3400.27	3278.19	935.33	40°04'08.644"N	104°44'19.111"W	0.56	
11839.00	88.670	358.610	7356.48	3493.01	3373.16	934.28	40°04'09.582"N	104°44'19.125"W	1.65	
11933.00	88.850	0.140	7358.52	3584.78	3467.13	933.25	40°04'10.511"N	104°44'19.138"W	1.64	
12029.00	89.630	2.110	7359.79	3679.10	3563.10	935.14	40°04'11.459"N	104°44'19.114"W	2.21	
12124.00	90.490	1.150	7359.69	3772.59	3658.06	937.84	40°04'12.398"N	104°44'19.079"W	1.36	
12219.00	90.090	2.340	7359.21	3866.13	3753.01	940.73	40°04'13.336"N	104°44'19.042"W	1.32	
12321.00	88.300	3.220	7360.64	3966.84	3854.87	945.68	40°04'14.343"N	104°44'18.978"W	1.96	
12416.00	88.300	3.530	7363.46	4060.77	3949.67	951.27	40°04'15.279"N	104°44'18.906"W	0.33	
12512.00	88.180	3.370	7366.41	4155.71	4045.45	957.04	40°04'16.226"N	104°44'18.832"W	0.21	

REFERENCE WELLPATH IDENTIFICATION

Operator	KERR-MCGEE OIL & GAS ONSHORE LP (LAMBERT STATE PLANE COORD)	Slot	SLOT#08 GRISWOLD 1N-11HZ (560'FSL & 1983'FEL, SEC.11)
Area	COLORADO	Well	GRISWOLD 1N-11HZ
Field	WELD COUNTY (KERR MCGEE)	Wellbore	GRISWOLD 1N-11HZ AWB <122-13134>
Facility	SEC.11-T1N-R66W		

WELLPATH DATA (142 stations)

MD [ft]	Inclination [°]	Azimuth [°]	TVD [ft]	Vert Sect [ft]	North [ft]	East [ft]	Latitude	Longitude	DLS ["/100ft]	Comments
12607.00	88.210	2.810	7369.40	4249.56	4140.26	962.16	40°04'17.163"N	104°44'18.766"W	0.59	
12702.00	89.130	2.560	7371.61	4343.33	4235.13	966.61	40°04'18.100"N	104°44'18.708"W	1.00	
12797.00	89.470	1.700	7372.77	4436.96	4330.06	970.14	40°04'19.038"N	104°44'18.663"W	0.97	
12893.00	90.090	0.730	7373.14	4531.32	4426.03	972.18	40°04'19.987"N	104°44'18.637"W	1.20	
12988.00	90.090	1.130	7372.99	4624.61	4521.02	973.72	40°04'20.925"N	104°44'18.617"W	0.42	
13076.00	89.870	1.180	7373.02	4711.09	4609.00	975.49	40°04'21.795"N	104°44'18.594"W	0.26	LAST BHI MWD+IFR SURVEY
13134.00	89.870	1.180	7373.15	4768.09	4666.99	976.69	40°04'22.368"N	104°44'18.579"W	0.00	PROJECTION TO BIT

HOLE & CASING SECTIONS - Ref Wellbore: GRISWOLD 1N-11HZ AWB <122-13134> Ref Wellpath: GRISWOLD 1N-11HZ AWP

String/Diameter	Start MD [ft]	End MD [ft]	Interval [ft]	Start TVD [ft]	End TVD [ft]	Start N/S [ft]	Start E/W [ft]	End N/S [ft]	End E/W [ft]
13.5in Open Hole	16.00	1760.00	1744.00	16.00	1732.03	0.00	0.00	-211.74	168.16
9.625in Casing Surface	16.00	1750.00	1734.00	16.00	1722.33	0.00	0.00	-209.78	166.66
7.875in Open Hole	1760.00	13134.00	11374.00	1732.03	7373.15	-211.74	168.16	4666.99	976.69

WELLPATH COMPOSITION - Ref Wellbore: GRISWOLD 1N-11HZ AWB <122-13134> Ref Wellpath: GRISWOLD 1N-11HZ AWP

Start MD [ft]	End MD [ft]	Positional Uncertainty Model	Log Name/Comment	Wellbore
16.00	1714.00	ISCWSA MWD, Rev. 2 (Standard)	CATHEDRAL MWD SURVEYS <122-1714>	GRISWOLD 1N-11HZ AWB <122-13134>
1714.00	13076.00	NaviTrak (MAGCORR, IFR)	BHI NAVITRAK MWD+IFR 7 7/8" <1762-13076>	GRISWOLD 1N-11HZ AWB <122-13134>
13076.00	13134.00	Blind Drilling (std)	Projection to bit	GRISWOLD 1N-11HZ AWB <122-13134>

REFERENCE WELLPATH IDENTIFICATION

Operator	KERR-MCGEE OIL & GAS ONSHORE LP (LAMBERT STATE PLANE COORD)	Slot	SLOT#08 GRISWOLD 1N-11HZ (560'FSL & 1983'FEL, SEC.11)
Area	COLORADO	Well	GRISWOLD 1N-11HZ
Field	WELD COUNTY (KERR MCGEE)	Wellbore	GRISWOLD 1N-11HZ AWB <122-13134>
Facility	SEC.11-T1N-R66W		

WELLPATH COMMENTS

MD [ft]	Inclination [°]	Azimuth [°]	TVD [ft]	Comment
16.00	0.000	194.500	16.00	TIE ON
122.00	0.300	194.500	122.00	BEGIN CATHEDRAL MWD SURVEYS
1714.00	14.200	142.000	1687.44	TIE ONTO CATHEDRAL MWD SURVEYS
1762.00	14.290	142.670	1733.96	BEGIN BHI MWD+IFR SURVEYS
8065.00	89.013	358.266	7358.42	TOP OF PRODUCTION
13076.00	89.870	1.180	7373.02	LAST BHI MWD+IFR SURVEY
13134.00	89.870	1.180	7373.15	PROJECTION TO BIT