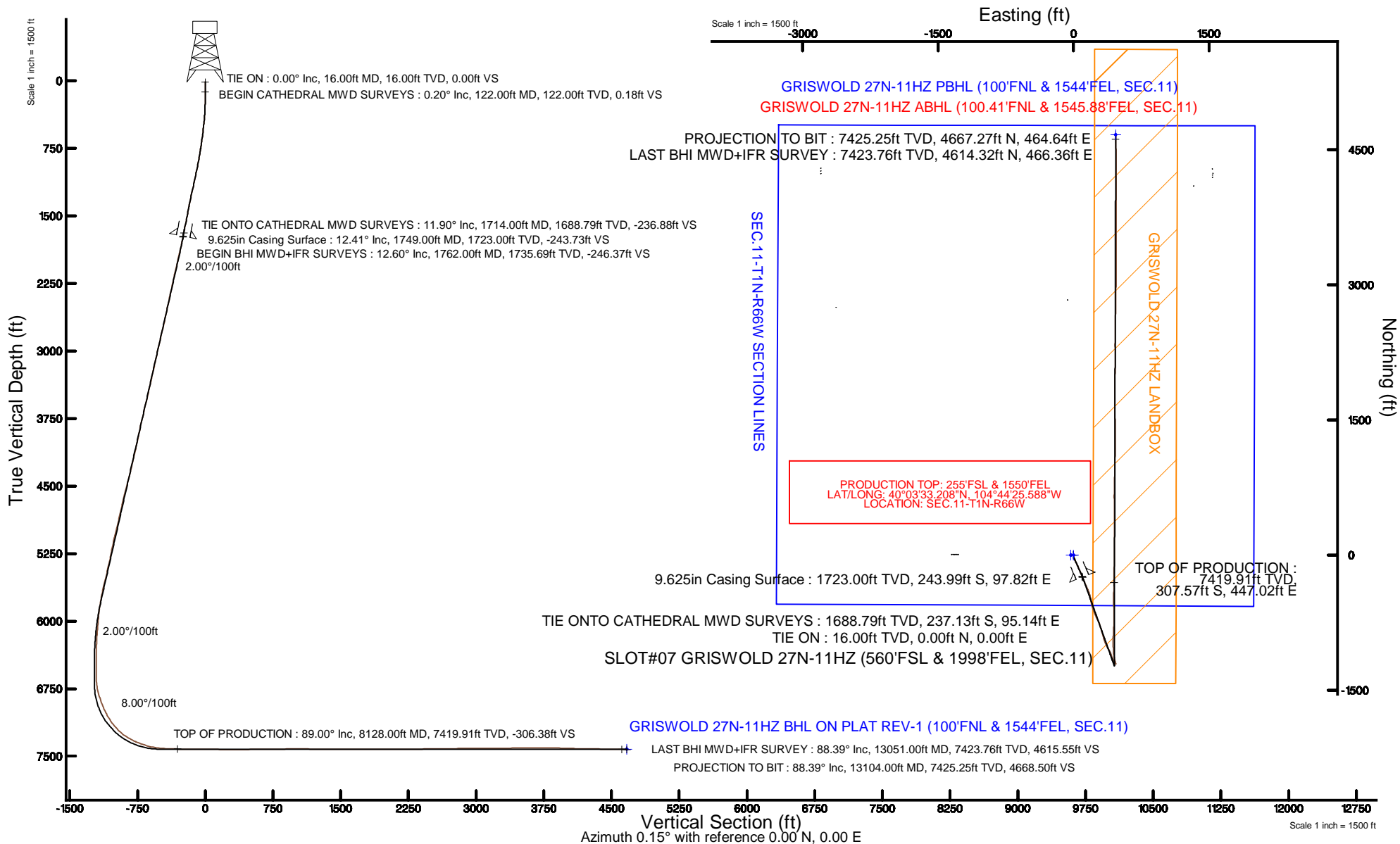


Location:	COLORADO	Slot:	SLOT#07 GRISWOLD 27N-11HZ (560'FSL & 1998'FEL, SEC.11)
Field:	WELD COUNTY (KERR MCGEE)	Well:	GRISWOLD 27N-11HZ
Facility:	SEC.11-T1N-R66W	Wellbore:	GRISWOLD 27N-11HZ PWB

Plot reference wellpath is GRISWOLD 27N-11HZ (REV-B.0) PWP	
True vertical depths are referenced to XTREME 24 (16KB) (RKB)	Grid System: NAD83 / Lambert Colorado SP, Northern Zone (501), US feet
Measured depths are referenced to XTREME 24 (16KB) (RKB)	North Reference: True north
XTREME 24 (16KB) (RKB) to Mean Sea Level: 5141 feet	Scale: True distance
Mean Sea Level to Mud line (At Slot: SLOT#07 GRISWOLD 27N-11HZ (560FSL & 1998FEL, SEC.11)): 0 feet	Depths are in feet
Coordinates are in feet referenced to Slot	Created by: robale01 on 3/12/2015



REFERENCE WELLPATH IDENTIFICATION

Operator	KERR-MCGEE OIL & GAS ONSHORE LP (LAMBERT STATE PLANE COORD)	Slot	SLOT#07 GRISWOLD 27N-11HZ (560'FSL & 1998'FEL, SEC.11)
Area	COLORADO	Well	GRISWOLD 27N-11HZ
Field	WELD COUNTY (KERR MCGEE)	Wellbore	GRISWOLD 27N-11HZ AWB <122-13104>
Facility	SEC.11-T1N-R66W		

REPORT SETUP INFORMATION

Projection System	NAD83 / Lambert Colorado SP, Northern Zone (501), US feet	Software System	WellArchitect® 4.1.1
North Reference	True	User	Robiale01
Scale	0.999962	Report Generated	3/12/2015 at 3:13:32 PM
Convergence at slot	0.49° East	Database/Source file	WellArchitectDB/GRISWOLD_27N-11HZ_AWB_122-13104_.xml

WELLPATH LOCATION

	Local coordinates		Grid coordinates		Geographic coordinates	
	North[ft]	East[ft]	Easting[US ft]	Northing[US ft]	Latitude	Longitude
Slot Location	-4234.02	2800.04	3212156.14	1265635.15	40°03'36.248"N	104°44'31.337"W
Facility Reference Pt			3209320.61	1269845.23	40°04'18.091"N	104°45'07.348"W
Field Reference Pt			3197771.84	1268891.29	40°04'09.600"N	104°47'36.000"W

WELLPATH DATUM

Calculation method	Minimum curvature	XTREME 24 (16'KB) (RKB) to Facility Vertical Datum	5141.00ft
Horizontal Reference Pt	Slot	XTREME 24 (16'KB) (RKB) to Mean Sea Level	5141.00ft
Vertical Reference Pt	XTREME 24 (16'KB) (RKB)	XTREME 24 (16'KB) (RKB) to Mud Line at Slot (SLOT#07 GRISWOLD 27N-11HZ (560'FSL & 1998'FEL, SEC.11))	5141.00ft
MD Reference Pt	XTREME 24 (16'KB) (RKB)	Section Origin	N 0.00, E 0.00 ft
Field Vertical Reference	Mean Sea Level	Section Azimuth	5.69°

REFERENCE WELLPATH IDENTIFICATION

Operator	KERR-MCGEE OIL & GAS ONSHORE LP (LAMBERT STATE PLANE COORD)	Slot	SLOT#07 GRISWOLD 27N-11HZ (560'FSL & 1998'FEL, SEC.11)
Area	COLORADO	Well	GRISWOLD 27N-11HZ
Field	WELD COUNTY (KERR MCGEE)	Wellbore	GRISWOLD 27N-11HZ AWB <122-13104>
Facility	SEC.11-T1N-R66W		

WELLPATH DATA (141 stations) † = interpolated/extrapolated station

MD [ft]	Inclination [°]	Azimuth [°]	TVD [ft]	Vert Sect [ft]	North [ft]	East [ft]	Latitude	Longitude	DLS [°/100ft]	Comments
0.00†	0.000	8.800	0.00	0.00	0.00	0.00	40°03'36.248"N	104°44'31.337"W	0.00	
16.00	0.000	8.800	16.00	0.00	0.00	0.00	40°03'36.248"N	104°44'31.337"W	0.00	TIE ON
122.00	0.200	8.800	122.00	0.18	0.18	0.03	40°03'36.250"N	104°44'31.337"W	0.19	BEGIN CATHEDRAL MWD SURVEYS
211.00	0.700	164.700	211.00	-0.17	-0.19	0.20	40°03'36.246"N	104°44'31.334"W	1.00	
297.00	2.000	178.100	296.97	-2.15	-2.19	0.38	40°03'36.226"N	104°44'31.332"W	1.55	
385.00	4.100	175.000	384.84	-6.76	-6.86	0.71	40°03'36.180"N	104°44'31.328"W	2.39	
474.00	6.000	174.200	473.49	-14.45	-14.66	1.46	40°03'36.103"N	104°44'31.318"W	2.14	
569.00	7.000	168.600	567.88	-24.84	-25.28	3.10	40°03'35.998"N	104°44'31.297"W	1.25	
663.00	8.200	159.800	661.06	-36.35	-37.18	6.55	40°03'35.881"N	104°44'31.253"W	1.77	
760.00	10.100	153.700	756.82	-49.79	-51.30	12.71	40°03'35.741"N	104°44'31.174"W	2.20	
854.00	11.000	155.300	849.23	-64.52	-66.84	20.11	40°03'35.587"N	104°44'31.078"W	1.01	
950.00	12.400	154.700	943.24	-81.26	-84.48	28.34	40°03'35.413"N	104°44'30.973"W	1.46	
1046.00	12.900	155.500	1036.90	-99.36	-103.55	37.19	40°03'35.225"N	104°44'30.859"W	0.55	
1142.00	13.800	155.600	1130.31	-118.53	-123.73	46.36	40°03'35.025"N	104°44'30.741"W	0.94	
1235.00	13.500	158.800	1220.68	-137.81	-143.95	54.87	40°03'34.825"N	104°44'30.631"W	0.87	
1330.00	12.500	156.200	1313.25	-156.65	-163.70	63.03	40°03'34.630"N	104°44'30.526"W	1.22	
1426.00	11.800	156.200	1407.10	-174.23	-182.18	71.18	40°03'34.448"N	104°44'30.422"W	0.73	
1522.00	12.500	155.900	1500.95	-191.80	-200.65	79.39	40°03'34.265"N	104°44'30.316"W	0.73	
1616.00	11.700	156.400	1592.86	-208.94	-218.67	87.36	40°03'34.087"N	104°44'30.214"W	0.86	
1714.00	11.900	157.900	1688.79	-226.54	-237.13	95.14	40°03'33.905"N	104°44'30.113"W	0.37	TIE ONTO CATHEDRAL MWD SURVEYS
1762.00	12.600	159.750	1735.69	-235.63	-246.63	98.81	40°03'33.811"N	104°44'30.066"W	1.67	BEGIN BHI MWD+IFR SURVEYS
1857.00	12.590	159.030	1828.41	-254.20	-266.02	106.10	40°03'33.619"N	104°44'29.972"W	0.17	
1952.00	14.570	156.810	1920.75	-273.92	-286.67	114.51	40°03'33.415"N	104°44'29.864"W	2.15	
2047.00	14.110	156.170	2012.79	-294.46	-308.25	123.90	40°03'33.202"N	104°44'29.744"W	0.51	
2142.00	14.010	155.950	2104.94	-314.52	-329.35	133.26	40°03'32.993"N	104°44'29.623"W	0.12	
2237.00	13.540	156.100	2197.21	-334.18	-350.01	142.45	40°03'32.789"N	104°44'29.505"W	0.50	
2332.00	13.050	155.710	2289.66	-353.14	-369.96	151.37	40°03'32.592"N	104°44'29.390"W	0.52	
2428.00	13.460	158.270	2383.11	-372.45	-390.22	159.97	40°03'32.392"N	104°44'29.280"W	0.75	
2523.00	13.030	159.970	2475.58	-391.91	-410.55	167.73	40°03'32.191"N	104°44'29.180"W	0.61	
2618.00	12.620	159.720	2568.21	-410.89	-430.34	174.99	40°03'31.995"N	104°44'29.086"W	0.44	
2713.00	12.260	166.630	2660.98	-429.76	-449.89	180.92	40°03'31.802"N	104°44'29.010"W	1.61	
2808.00	13.890	168.490	2753.52	-450.19	-470.88	185.53	40°03'31.595"N	104°44'28.951"W	1.77	
2903.00	13.430	167.540	2845.83	-471.56	-492.83	190.19	40°03'31.378"N	104°44'28.891"W	0.54	
2998.00	12.910	172.430	2938.33	-492.38	-514.12	193.96	40°03'31.167"N	104°44'28.842"W	1.29	
3093.00	12.810	169.430	3030.95	-512.82	-534.99	197.29	40°03'30.961"N	104°44'28.800"W	0.71	
3188.00	12.750	164.840	3123.60	-532.73	-555.47	201.97	40°03'30.759"N	104°44'28.740"W	1.07	
3284.00	12.810	164.170	3217.22	-552.53	-575.93	207.64	40°03'30.557"N	104°44'28.667"W	0.17	
3379.00	13.040	160.930	3309.82	-572.06	-596.19	214.02	40°03'30.356"N	104°44'28.585"W	0.80	
3474.00	13.600	158.910	3402.26	-591.76	-616.74	221.54	40°03'30.153"N	104°44'28.488"W	0.77	
3569.00	13.850	157.670	3494.55	-611.77	-637.68	229.88	40°03'29.946"N	104°44'28.381"W	0.41	
3664.00	14.500	158.720	3586.66	-632.41	-659.28	238.51	40°03'29.733"N	104°44'28.270"W	0.74	
3759.00	14.720	155.210	3678.59	-653.41	-681.32	247.89	40°03'29.515"N	104°44'28.149"W	0.96	
3854.00	14.820	155.280	3770.45	-674.29	-703.31	258.03	40°03'29.298"N	104°44'28.019"W	0.11	
3949.00	13.120	149.180	3862.64	-693.44	-723.61	268.64	40°03'29.097"N	104°44'27.882"W	2.37	
4044.00	12.360	153.930	3955.30	-710.75	-742.01	278.63	40°03'28.915"N	104°44'27.754"W	1.36	

REFERENCE WELLPATH IDENTIFICATION

Operator	KERR-MCGEE OIL & GAS ONSHORE LP (LAMBERT STATE PLANE COORD)	Slot	SLOT#07 GRISWOLD 27N-11HZ (560'FSL & 1998'FEL, SEC.11)
Area	COLORADO	Well	GRISWOLD 27N-11HZ
Field	WELD COUNTY (KERR MCGEE)	Wellbore	GRISWOLD 27N-11HZ AWP <122-13104>
Facility	SEC.11-T1N-R66W		

WELLPATH DATA (141 stations) † = interpolated/extrapolated station

MD [ft]	Inclination [°]	Azimuth [°]	TVD [ft]	Vert Sect [ft]	North [ft]	East [ft]	Latitude	Longitude	DLS [°/100ft]	Comments
4139.00	13.740	164.720	4047.86	-729.94	-762.03	286.07	40°03'28.717"N	104°44'27.658"W	2.94	
4234.00	13.720	162.100	4140.15	-750.80	-783.63	292.51	40°03'28.504"N	104°44'27.575"W	0.65	
4330.00	13.560	162.680	4233.44	-771.59	-805.21	299.36	40°03'28.291"N	104°44'27.487"W	0.22	
4425.00	13.760	162.670	4325.75	-792.24	-826.63	306.04	40°03'28.079"N	104°44'27.401"W	0.21	
4520.00	16.270	163.400	4417.50	-814.96	-850.17	313.21	40°03'27.846"N	104°44'27.309"W	2.65	
4615.00	15.280	164.290	4508.92	-838.93	-874.97	320.40	40°03'27.601"N	104°44'27.217"W	1.07	
4710.00	13.260	165.800	4600.99	-860.83	-897.59	326.46	40°03'27.378"N	104°44'27.139"W	2.16	
4805.00	12.720	166.950	4693.56	-880.98	-918.34	331.50	40°03'27.173"N	104°44'27.074"W	0.63	
4900.00	13.270	161.040	4786.13	-900.80	-938.84	337.40	40°03'26.970"N	104°44'26.998"W	1.51	
4995.00	14.550	158.560	4878.34	-921.33	-960.26	345.31	40°03'26.758"N	104°44'26.896"W	1.49	
5091.00	14.520	157.080	4971.27	-942.63	-982.57	354.40	40°03'26.538"N	104°44'26.779"W	0.39	
5186.00	14.940	153.900	5063.15	-963.49	-1004.53	364.43	40°03'26.321"N	104°44'26.650"W	0.96	
5281.00	12.760	153.390	5155.38	-982.77	-1024.91	374.51	40°03'26.120"N	104°44'26.521"W	2.30	
5376.00	13.560	144.010	5247.89	-999.96	-1043.31	385.76	40°03'25.938"N	104°44'26.376"W	2.40	
5470.00	14.130	153.370	5339.17	-1017.89	-1062.48	397.38	40°03'25.748"N	104°44'26.227"W	2.46	
5566.00	14.030	156.080	5432.29	-1037.91	-1083.60	407.35	40°03'25.540"N	104°44'26.098"W	0.69	
5661.00	14.530	161.190	5524.36	-1058.77	-1105.40	415.86	40°03'25.324"N	104°44'25.989"W	1.43	
5756.00	13.740	162.030	5616.48	-1079.95	-1127.42	423.19	40°03'25.107"N	104°44'25.895"W	0.86	
5851.00	11.550	158.910	5709.17	-1098.78	-1147.02	430.09	40°03'24.913"N	104°44'25.806"W	2.41	
5946.00	10.170	158.240	5802.47	-1114.71	-1163.69	436.62	40°03'24.748"N	104°44'25.722"W	1.46	
6041.00	7.580	151.850	5896.33	-1127.36	-1177.00	442.69	40°03'24.617"N	104°44'25.644"W	2.91	
6136.00	5.790	152.360	5990.68	-1136.57	-1186.77	447.87	40°03'24.520"N	104°44'25.577"W	1.89	
6232.00	5.670	145.380	6086.20	-1144.23	-1194.97	452.81	40°03'24.439"N	104°44'25.514"W	0.74	
6327.00	4.370	140.510	6180.83	-1150.36	-1201.62	457.78	40°03'24.373"N	104°44'25.450"W	1.44	
6422.00	3.180	125.710	6275.63	-1154.23	-1205.95	462.22	40°03'24.330"N	104°44'25.393"W	1.61	
6517.00	2.460	120.530	6370.51	-1156.41	-1208.53	466.11	40°03'24.305"N	104°44'25.343"W	0.80	
6612.00	0.030	341.060	6465.48	-1157.24	-1209.54	467.86	40°03'24.295"N	104°44'25.320"W	2.61	
6707.00	0.320	172.500	6560.48	-1157.48	-1209.78	467.89	40°03'24.293"N	104°44'25.320"W	0.37	
6802.00	3.130	338.210	6655.44	-1155.44	-1207.63	466.96	40°03'24.314"N	104°44'25.332"W	3.62	
6897.00	11.910	345.730	6749.53	-1143.90	-1195.70	463.57	40°03'24.432"N	104°44'25.375"W	9.28	
6992.00	18.310	346.710	6841.20	-1120.55	-1171.65	457.72	40°03'24.669"N	104°44'25.451"W	6.74	
7088.00	21.610	347.400	6931.42	-1089.49	-1139.72	450.40	40°03'24.985"N	104°44'25.545"W	3.45	
7183.00	26.780	353.980	7018.06	-1051.89	-1101.33	444.33	40°03'25.364"N	104°44'25.623"W	6.13	
7278.00	33.590	357.960	7100.14	-1004.84	-1053.72	441.15	40°03'25.835"N	104°44'25.664"W	7.47	
7373.00	42.100	356.420	7175.09	-947.26	-995.57	438.22	40°03'26.410"N	104°44'25.701"W	9.01	
7468.00	48.340	2.650	7242.01	-880.29	-928.23	437.87	40°03'27.075"N	104°44'25.706"W	8.04	
7563.00	59.340	3.590	7297.98	-803.79	-851.77	442.08	40°03'27.831"N	104°44'25.652"W	11.61	
7658.00	67.320	1.720	7340.59	-719.09	-767.04	445.96	40°03'28.668"N	104°44'25.602"W	8.58	
7753.00	72.320	359.500	7373.35	-630.31	-677.91	446.88	40°03'29.549"N	104°44'25.590"W	5.70	
7848.00	77.940	358.090	7397.72	-539.19	-586.15	444.94	40°03'30.455"N	104°44'25.615"W	6.09	
7944.00	84.700	0.160	7412.20	-444.97	-491.32	443.51	40°03'31.393"N	104°44'25.633"W	7.36	
8039.00	88.420	1.510	7417.90	-350.50	-396.52	444.89	40°03'32.329"N	104°44'25.615"W	4.16	
8128.00†	89.001	1.229	7419.91	-261.78	-307.57	447.02	40°03'33.208"N	104°44'25.588"W	0.72	TOP OF PRODUCTION
8134.00	89.040	1.210	7420.01	-255.79	-301.57	447.14	40°03'33.268"N	104°44'25.586"W	0.72	
8229.00	89.190	0.730	7421.48	-161.13	-206.60	448.75	40°03'34.206"N	104°44'25.566"W	0.53	

REFERENCE WELLPATH IDENTIFICATION

Operator	KERR-MCGEE OIL & GAS ONSHORE LP (LAMBERT STATE PLANE COORD)	Slot	SLOT#07 GRISWOLD 27N-11HZ (560'FSL & 1998'FEL, SEC.11)
Area	COLORADO	Well	GRISWOLD 27N-11HZ
Field	WELD COUNTY (KERR MCGEE)	Wellbore	GRISWOLD 27N-11HZ AWP <122-13104>
Facility	SEC.11-T1N-R66W		

WELLPATH DATA (141 stations)

MD [ft]	Inclination [°]	Azimuth [°]	TVD [ft]	Vert Sect [ft]	North [ft]	East [ft]	Latitude	Longitude	DLS [°/100ft]	Comments
8323.00	89.780	0.480	7422.32	-67.50	-112.61	449.74	40°03'35.135"N	104°44'25.553"W	0.68	
8418.00	89.470	0.390	7422.94	27.10	-17.61	450.47	40°03'36.074"N	104°44'25.544"W	0.34	
8513.00	89.380	0.120	7423.90	121.67	77.38	450.89	40°03'37.013"N	104°44'25.538"W	0.30	
8608.00	88.700	359.800	7425.49	216.18	172.37	450.82	40°03'37.951"N	104°44'25.539"W	0.79	
8703.00	90.360	0.630	7426.27	310.74	267.36	451.18	40°03'38.890"N	104°44'25.534"W	1.95	
8798.00	90.330	0.200	7425.70	405.34	362.35	451.87	40°03'39.829"N	104°44'25.525"W	0.45	
8893.00	90.240	359.470	7425.22	499.84	457.35	451.59	40°03'40.768"N	104°44'25.529"W	0.77	
8987.00	90.610	359.120	7424.53	593.25	551.34	450.44	40°03'41.696"N	104°44'25.544"W	0.54	
9082.00	90.640	359.860	7423.49	687.69	646.33	449.59	40°03'42.635"N	104°44'25.555"W	0.78	
9178.00	90.700	1.780	7422.37	783.33	742.31	450.96	40°03'43.584"N	104°44'25.537"W	2.00	
9275.00	90.890	1.530	7421.02	880.08	839.26	453.77	40°03'44.542"N	104°44'25.501"W	0.32	
9370.00	91.170	0.840	7419.31	974.78	934.22	455.73	40°03'45.480"N	104°44'25.476"W	0.78	
9465.00	90.210	1.680	7418.17	1069.48	1029.19	457.82	40°03'46.419"N	104°44'25.449"W	1.34	
9560.00	88.490	1.460	7419.25	1164.23	1124.15	460.42	40°03'47.357"N	104°44'25.415"W	1.83	
9655.00	88.150	1.260	7422.03	1258.92	1219.08	462.68	40°03'48.295"N	104°44'25.386"W	0.42	
9751.00	89.500	359.680	7424.00	1354.49	1315.05	463.46	40°03'49.244"N	104°44'25.376"W	2.16	
9846.00	89.810	359.070	7424.57	1448.92	1410.04	462.43	40°03'50.182"N	104°44'25.389"W	0.72	
9941.00	90.060	357.620	7424.68	1543.14	1505.00	459.68	40°03'51.121"N	104°44'25.425"W	1.55	
10036.00	91.040	358.570	7423.77	1637.30	1599.94	456.52	40°03'52.059"N	104°44'25.465"W	1.44	
10131.00	90.950	0.840	7422.12	1731.76	1694.92	456.04	40°03'52.998"N	104°44'25.472"W	2.39	
10226.00	90.520	1.060	7420.90	1826.43	1789.90	457.61	40°03'53.936"N	104°44'25.451"W	0.51	
10321.00	89.660	0.550	7420.75	1921.08	1884.89	458.95	40°03'54.875"N	104°44'25.434"W	1.05	
10416.00	89.630	0.080	7421.34	2015.66	1979.88	459.47	40°03'55.814"N	104°44'25.427"W	0.50	
10511.00	88.300	0.730	7423.05	2110.24	2074.86	460.14	40°03'56.752"N	104°44'25.419"W	1.56	
10606.00	90.770	0.340	7423.83	2204.85	2169.85	461.03	40°03'57.691"N	104°44'25.407"W	2.63	
10701.00	89.870	358.710	7423.30	2299.29	2264.84	460.24	40°03'58.630"N	104°44'25.417"W	1.96	
10796.00	92.060	0.590	7421.70	2393.74	2359.82	459.66	40°03'59.568"N	104°44'25.425"W	3.04	
10891.00	90.890	0.990	7419.25	2488.36	2454.77	460.97	40°04'00.507"N	104°44'25.408"W	1.30	
10986.00	91.510	0.960	7417.26	2583.02	2549.74	462.58	40°04'01.445"N	104°44'25.387"W	0.65	
11082.00	89.960	1.080	7416.03	2678.69	2645.71	464.29	40°04'02.393"N	104°44'25.365"W	1.62	
11176.00	90.640	0.860	7415.54	2772.37	2739.70	465.88	40°04'03.322"N	104°44'25.345"W	0.76	
11270.00	90.920	0.430	7414.26	2866.00	2833.68	466.94	40°04'04.251"N	104°44'25.331"W	0.55	
11365.00	90.270	1.410	7413.27	2960.66	2928.66	468.47	40°04'05.190"N	104°44'25.311"W	1.24	
11461.00	90.240	0.890	7412.84	3056.36	3024.64	470.39	40°04'06.138"N	104°44'25.287"W	0.54	
11555.00	89.960	0.200	7412.68	3149.98	3118.64	471.29	40°04'07.067"N	104°44'25.275"W	0.79	
11651.00	90.550	0.140	7412.25	3245.54	3214.63	471.57	40°04'08.016"N	104°44'25.271"W	0.62	
11746.00	90.830	359.940	7411.11	3340.07	3309.63	471.64	40°04'08.954"N	104°44'25.270"W	0.36	
11840.00	90.760	359.330	7409.80	3433.54	3403.62	471.04	40°04'09.883"N	104°44'25.278"W	0.65	
11935.00	90.180	0.810	7409.02	3528.08	3498.61	471.16	40°04'10.822"N	104°44'25.277"W	1.67	
12029.00	90.120	359.930	7408.78	3621.67	3592.61	471.76	40°04'11.751"N	104°44'25.269"W	0.94	
12124.00	91.010	0.330	7407.84	3716.22	3687.60	471.98	40°04'12.690"N	104°44'25.266"W	1.03	
12219.00	89.290	0.560	7407.59	3810.82	3782.59	472.72	40°04'13.628"N	104°44'25.257"W	1.83	
12314.00	89.040	359.920	7408.98	3905.38	3877.58	473.11	40°04'14.567"N	104°44'25.251"W	0.72	
12409.00	88.670	0.160	7410.88	3999.90	3972.56	473.18	40°04'15.506"N	104°44'25.250"W	0.46	
12505.00	87.590	359.610	7414.01	4095.35	4068.51	472.99	40°04'16.454"N	104°44'25.253"W	1.26	

REFERENCE WELLPATH IDENTIFICATION

Operator	KERR-MCGEE OIL & GAS ONSHORE LP (LAMBERT STATE PLANE COORD)	Slot	SLOT#07 GRISWOLD 27N-11HZ (560'FSL & 1998'FEL, SEC.11)
Area	COLORADO	Well	GRISWOLD 27N-11HZ
Field	WELD COUNTY (KERR MCGEE)	Wellbore	GRISWOLD 27N-11HZ AWP <122-13104>
Facility	SEC.11-T1N-R66W		

WELLPATH DATA (141 stations)

MD [ft]	Inclination [°]	Azimuth [°]	TVD [ft]	Vert Sect [ft]	North [ft]	East [ft]	Latitude	Longitude	DLS [°/100ft]	Comments
12600.00	88.610	359.170	7417.16	4189.73	4163.45	471.98	40°04'17.392"N	104°44'25.266"W	1.17	
12695.00	89.440	0.770	7418.77	4284.24	4258.43	471.93	40°04'18.331"N	104°44'25.267"W	1.90	
12790.00	89.320	359.450	7419.80	4378.78	4353.43	472.11	40°04'19.269"N	104°44'25.264"W	1.40	
12982.00	89.190	358.370	7422.30	4569.42	4545.37	468.46	40°04'21.166"N	104°44'25.311"W	0.57	
13051.00	88.390	358.140	7423.76	4637.83	4614.32	466.36	40°04'21.848"N	104°44'25.338"W	1.21	LAST BHI MWD+IFR SURVEY
13104.00	88.390	358.140	7425.25	4690.35	4667.27	464.64	40°04'22.371"N	104°44'25.360"W	0.00	PROJECTION TO BIT

HOLE & CASING SECTIONS - Ref Wellbore: GRISWOLD 27N-11HZ AWP <122-13104> Ref Wellpath: GRISWOLD 27N-11HZ AWP

String/Diameter	Start MD [ft]	End MD [ft]	Interval [ft]	Start TVD [ft]	End TVD [ft]	Start N/S [ft]	Start E/W [ft]	End N/S [ft]	End E/W [ft]
13.5in Open Hole	16.00	1759.00	1743.00	16.00	1732.77	0.00	0.00	-246.02	98.58
9.625in Casing Surface	16.00	1749.00	1733.00	16.00	1723.00	0.00	0.00	-243.99	97.82
7.875in Open Hole	1759.00	13104.00	11345.00	1732.77	7425.25	-246.02	98.58	4667.27	464.64

WELLPATH COMPOSITION - Ref Wellbore: GRISWOLD 27N-11HZ AWP <122-13104> Ref Wellpath: GRISWOLD 27N-11HZ AWP

Start MD [ft]	End MD [ft]	Positional Uncertainty Model	Log Name/Comment	Wellbore
16.00	1714.00	ISCWSA MWD, Rev. 2 (Standard)	CATHEDRAL MWD SURVEYS <122-1714>	GRISWOLD 27N-11HZ AWP <122-13104>
1714.00	13051.00	NaviTrak (MAGCORR,IFR)	BHI NAVITRAK MWD+IFR 7 7/8" <1762-13051>	GRISWOLD 27N-11HZ AWP <122-13104>
13051.00	13104.00	Blind Drilling (std)	Projection to bit	GRISWOLD 27N-11HZ AWP <122-13104>

REFERENCE WELLPATH IDENTIFICATION

Operator	KERR-MCGEE OIL & GAS ONSHORE LP (LAMBERT STATE PLANE COORD)	Slot	SLOT#07 GRISWOLD 27N-11HZ (560'FSL & 1998'FEL, SEC.11)
Area	COLORADO	Well	GRISWOLD 27N-11HZ
Field	WELD COUNTY (KERR MCGEE)	Wellbore	GRISWOLD 27N-11HZ AWB <122-13104>
Facility	SEC.11-T1N-R66W		

WELLPATH COMMENTS

MD [ft]	Inclination [°]	Azimuth [°]	TVD [ft]	Comment
16.00	0.000	8.800	16.00	TIE ON
122.00	0.200	8.800	122.00	BEGIN CATHEDRAL MWD SURVEYS
1714.00	11.900	157.900	1688.79	TIE ONTO CATHEDRAL MWD SURVEYS
1762.00	12.600	159.750	1735.69	BEGIN BHI MWD+IFR SURVEYS
8128.00	89.001	1.229	7419.91	TOP OF PRODUCTION
13051.00	88.390	358.140	7423.76	LAST BHI MWD+IFR SURVEY
13104.00	88.390	358.140	7425.25	PROJECTION TO BIT