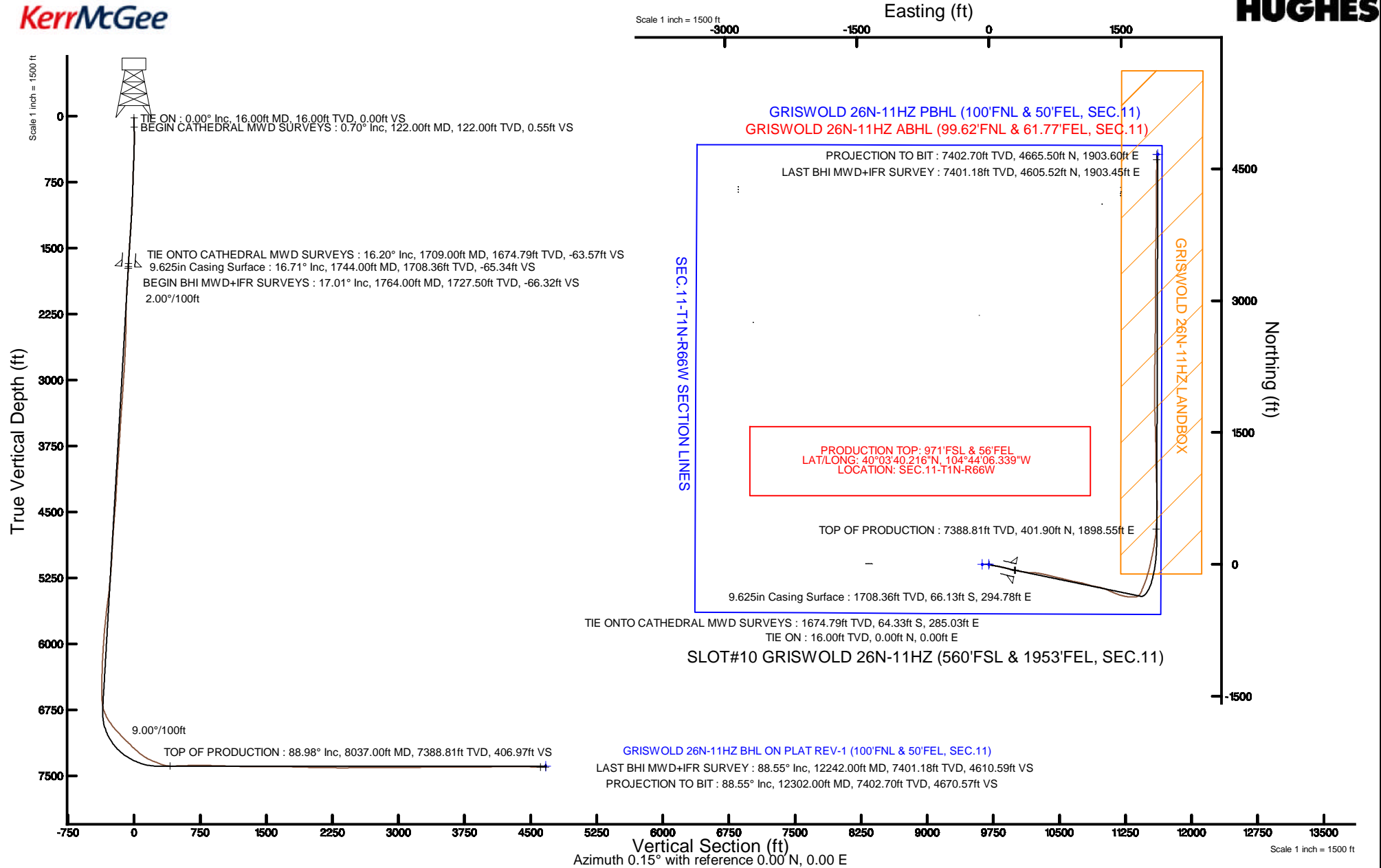


# KERR-MCGEE OIL & GAS ONSHORE LP (LAMBERT STATE PLANE COORD)

Location: COLORADO Slot: SLOT#10 GRISWOLD 26N-11HZ (560'FSL & 1953'FEL, SEC.11)  
 Field: WELD COUNTY (KERR MCGEE) Well: GRISWOLD 26N-11HZ  
 Facility: SEC.11-T1N-R66W Wellbore: GRISWOLD 26N-11HZ PWB

Plot reference wellpath is GRISWOLD 26N-11HZ (REV-A.1) PWB

True vertical depths are referenced to XTREME 24 (16KB) (RKB)	Grid System: NAD83 / Lambert Colorado SP, Northern Zone (501), US feet
Measured depths are referenced to XTREME 24 (16KB) (RKB)	North Reference: True north
XTREME 24 (16KB) (RKB) to Mean Sea Level: 5141 feet	Scale: True distance
Mean Sea Level to Mud line (At Slot: SLOT#10 GRISWOLD 26N-11HZ (560'FSL & 1953'FEL, SEC.11)): 0 feet	Depths are in feet
Coordinates are in feet referenced to Slot	Created by: robiale01 on 3/11/2015



# Actual Wellpath Report

GRISWOLD 26N-11HZ AWP

Page 1 of 6

REFERENCE WELLPATH IDENTIFICATION			
Operator	KERR-MCGEE OIL & GAS ONSHORE LP (LAMBERT STATE PLANE COORD)	Slot	SLOT#10 GRISWOLD 26N-11HZ (560'FSL & 1953'FEL, SEC.11)
Area	COLORADO	Well	GRISWOLD 26N-11HZ
Field	WELD COUNTY (KERR MCGEE)	Wellbore	GRISWOLD 26N-11HZ AWB <122-12302>
Facility	SEC.11-T1N-R66W		

REPORT SETUP INFORMATION			
Projection System	NAD83 / Lambert Colorado SP, Northern Zone (501), US feet	Software System	WellArchitect® 4.1.1
North Reference	True	User	Robiale01
Scale	0.999962	Report Generated	3/11/2015 at 1:50:12 PM
Convergence at slot	0.49° East	Database/Source file	WellArchitectDB/GRISWOLD_26N-11HZ_AWB_122-12302_.xml

WELLPATH LOCATION						
	Local coordinates		Grid coordinates		Geographic coordinates	
	North[ft]	East[ft]	Easting[US ft]	Northing[US ft]	Latitude	Longitude
Slot Location	-4234.32	2845.13	3212201.24	1265635.23	40°03'36.245"N	104°44'30.757"W
Facility Reference Pt			3209320.61	1269845.23	40°04'18.091"N	104°45'07.348"W
Field Reference Pt			3197771.84	1268891.29	40°04'09.600"N	104°47'36.000"W

WELLPATH DATUM			
Calculation method	Minimum curvature	XTREME 24 (16'KB) (RKB) to Facility Vertical Datum	5141.00ft
Horizontal Reference Pt	Slot	XTREME 24 (16'KB) (RKB) to Mean Sea Level	5141.00ft
Vertical Reference Pt	XTREME 24 (16'KB) (RKB)	XTREME 24 (16'KB) (RKB) to Mud Line at Slot (SLOT#10 GRISWOLD 26N-11HZ (560'FSL & 1953'FEL, SEC.11))	5141.00ft
MD Reference Pt	XTREME 24 (16'KB) (RKB)	Section Origin	N 0.00, E 0.00 ft
Field Vertical Reference	Mean Sea Level	Section Azimuth	22.20°



# Actual Wellpath Report

## GRISWOLD 26N-11HZ AWP

Page 2 of 6



REFERENCE WELLPATH IDENTIFICATION			
Operator	KERR-MCGEE OIL & GAS ONSHORE LP (LAMBERT STATE PLANE COORD)	Slot	SLOT#10 GRISWOLD 26N-11HZ (560'FSL & 1953'FEL, SEC.11)
Area	COLORADO	Well	GRISWOLD 26N-11HZ
Field	WELD COUNTY (KERR MCGEE)	Wellbore	GRISWOLD 26N-11HZ AWB <122-12302>
Facility	SEC.11-T1N-R66W		

WELLPATH DATA (125 stations) † = interpolated/extrapolated station										
MD [ft]	Inclination [°]	Azimuth [°]	TVD [ft]	Vert Sect [ft]	North [ft]	East [ft]	Latitude	Longitude	DLS [°/100ft]	Comments
0.00†	0.000	31.800	0.00	0.00	0.00	0.00	40°03'36.245°N	104°44'30.757°W	0.00	
16.00	0.000	31.800	16.00	0.00	0.00	0.00	40°03'36.245°N	104°44'30.757°W	0.00	TIE ON
122.00	0.700	31.800	122.00	0.64	0.55	0.34	40°03'36.250°N	104°44'30.753°W	0.66	BEGIN CATHEDRAL MWD SURVEYS
211.00	0.400	31.900	210.99	1.48	1.28	0.79	40°03'36.258°N	104°44'30.747°W	0.34	
297.00	1.700	102.500	296.98	1.99	1.25	2.20	40°03'36.257°N	104°44'30.729°W	1.87	
385.00	3.700	113.300	384.88	2.16	-0.15	6.08	40°03'36.244°N	104°44'30.679°W	2.34	
474.00	5.300	114.800	473.60	1.93	-3.00	12.45	40°03'36.215°N	104°44'30.597°W	1.80	
569.00	7.300	108.800	568.02	2.10	-6.77	22.16	40°03'36.178°N	104°44'30.472°W	2.21	
663.00	9.200	101.900	661.05	3.80	-10.24	35.17	40°03'36.144°N	104°44'30.305°W	2.28	
760.00	11.500	98.500	756.46	7.48	-13.27	52.32	40°03'36.114°N	104°44'30.084°W	2.45	
854.00	12.300	99.800	848.44	11.84	-16.36	71.45	40°03'36.083°N	104°44'29.838°W	0.90	
950.00	13.400	100.300	942.04	16.33	-20.09	92.47	40°03'36.046°N	104°44'29.568°W	1.15	
1046.00	14.100	101.900	1035.29	20.72	-24.49	114.86	40°03'36.003°N	104°44'29.280°W	0.83	
1142.00	14.700	103.000	1128.27	24.75	-29.64	138.17	40°03'35.952°N	104°44'28.980°W	0.69	
1235.00	15.200	102.800	1218.12	28.63	-35.00	161.56	40°03'35.899°N	104°44'28.679°W	0.54	
1330.00	15.100	103.300	1309.82	32.58	-40.60	185.75	40°03'35.844°N	104°44'28.368°W	0.17	
1426.00	15.300	103.600	1402.46	36.40	-46.46	210.23	40°03'35.786°N	104°44'28.053°W	0.22	
1522.00	15.300	105.900	1495.06	39.68	-52.91	234.72	40°03'35.722°N	104°44'27.738°W	0.63	
1616.00	16.300	102.300	1585.51	43.31	-59.12	259.53	40°03'35.661°N	104°44'27.419°W	1.49	
1709.00	16.200	100.800	1674.79	48.12	-64.33	285.03	40°03'35.609°N	104°44'27.091°W	0.46	TIE ONTO CATHEDRAL MWD SURVEYS
1764.00	17.010	99.740	1727.50	51.37	-67.13	300.49	40°03'35.582°N	104°44'26.892°W	1.57	BEGIN BHI MWD+IFR SURVEYS
1859.00	16.690	100.420	1818.42	57.15	-71.94	327.61	40°03'35.534°N	104°44'26.544°W	0.40	
1953.00	17.910	103.010	1908.17	62.21	-77.64	354.97	40°03'35.478°N	104°44'26.192°W	1.53	
2048.00	17.600	100.400	1998.65	67.48	-83.52	383.33	40°03'35.420°N	104°44'25.827°W	0.90	
2143.00	16.880	98.280	2089.38	73.74	-88.10	411.10	40°03'35.374°N	104°44'25.470°W	1.01	
2238.00	16.370	95.870	2180.41	80.82	-91.46	438.07	40°03'35.341°N	104°44'25.123°W	0.90	
2334.00	15.830	92.840	2272.64	88.96	-93.49	464.60	40°03'35.321°N	104°44'24.782°W	1.04	
2429.00	15.690	90.500	2364.07	98.00	-94.24	490.39	40°03'35.314°N	104°44'24.450°W	0.69	
2524.00	15.480	93.060	2455.58	106.91	-95.03	515.90	40°03'35.306°N	104°44'24.122°W	0.76	
2619.00	15.230	97.240	2547.19	114.28	-97.28	540.93	40°03'35.284°N	104°44'23.800°W	1.19	
2714.00	14.550	99.680	2639.00	120.09	-100.86	565.08	40°03'35.248°N	104°44'23.490°W	0.97	
2809.00	15.710	100.560	2730.71	125.27	-105.22	589.49	40°03'35.205°N	104°44'23.176°W	1.24	
2904.00	16.220	101.490	2822.04	130.33	-110.22	615.13	40°03'35.156°N	104°44'22.846°W	0.60	
2999.00	15.550	102.950	2913.42	134.84	-115.72	640.54	40°03'35.101°N	104°44'22.519°W	0.82	
3094.00	15.750	104.820	3004.89	138.54	-121.87	665.42	40°03'35.041°N	104°44'22.199°W	0.57	
3189.00	16.150	102.930	3096.24	142.32	-128.13	690.76	40°03'34.979°N	104°44'21.873°W	0.69	
3284.00	16.660	103.940	3187.37	146.41	-134.36	716.85	40°03'34.917°N	104°44'21.538°W	0.62	
3379.00	16.860	103.970	3278.33	150.33	-140.97	743.44	40°03'34.852°N	104°44'21.196°W	0.21	
3474.00	15.950	104.590	3369.47	154.03	-147.58	769.44	40°03'34.786°N	104°44'20.861°W	0.98	
3570.00	16.340	101.460	3461.68	158.30	-153.59	795.44	40°03'34.727°N	104°44'20.527°W	0.99	
3665.00	15.920	103.350	3552.94	162.79	-159.25	821.22	40°03'34.671°N	104°44'20.195°W	0.71	
3760.00	15.780	104.110	3644.33	166.61	-165.41	846.42	40°03'34.610°N	104°44'19.871°W	0.26	
3855.00	15.490	102.940	3735.82	170.47	-171.40	871.31	40°03'34.551°N	104°44'19.551°W	0.45	
3950.00	15.930	103.690	3827.27	174.44	-177.33	896.34	40°03'34.492°N	104°44'19.229°W	0.51	
4045.00	16.210	104.740	3918.55	178.08	-183.79	921.83	40°03'34.429°N	104°44'18.901°W	0.42	

REFERENCE WELLPATH IDENTIFICATION			
Operator	KERR-MCGEE OIL & GAS ONSHORE LP (LAMBERT STATE PLANE COORD)	Slot	SLOT#10 GRISWOLD 26N-11HZ (560'FSL & 1953'FEL, SEC.11)
Area	COLORADO	Well	GRISWOLD 26N-11HZ
Field	WELD COUNTY (KERR MCGEE)	Wellbore	GRISWOLD 26N-11HZ AWP <122-12302>
Facility	SEC.11-T1N-R66W		

WELLPATH DATA (125 stations)										
MD [ft]	Inclination [°]	Azimuth [°]	TVD [ft]	Vert Sect [ft]	North [ft]	East [ft]	Latitude	Longitude	DLS [°/100ft]	Comments
4140.00	16.490	103.740	4009.71	181.79	-190.36	947.75	40°03'34.364"N	104°44'18.568"W	0.42	
4235.00	16.410	100.560	4100.83	186.48	-196.02	974.04	40°03'34.308"N	104°44'18.230"W	0.95	
4330.00	16.790	101.260	4191.87	191.79	-201.16	1000.69	40°03'34.257"N	104°44'17.887"W	0.45	
4424.00	17.050	98.870	4281.80	197.54	-205.94	1027.62	40°03'34.210"N	104°44'17.541"W	0.79	
4519.00	15.940	103.450	4372.89	202.73	-211.12	1054.07	40°03'34.158"N	104°44'17.201"W	1.80	
4615.00	17.360	107.670	4464.87	205.87	-218.53	1080.54	40°03'34.085"N	104°44'16.860"W	1.94	
4710.00	16.270	105.120	4555.81	208.63	-226.31	1106.90	40°03'34.008"N	104°44'16.521"W	1.39	
4804.00	15.740	105.640	4646.16	211.70	-233.18	1131.89	40°03'33.940"N	104°44'16.200"W	0.58	
4899.00	17.100	104.740	4737.29	214.99	-240.21	1157.80	40°03'33.871"N	104°44'15.867"W	1.46	
4994.00	16.100	102.690	4828.33	218.98	-246.65	1184.16	40°03'33.807"N	104°44'15.528"W	1.22	
5089.00	14.940	100.480	4919.86	223.64	-251.78	1209.05	40°03'33.757"N	104°44'15.208"W	1.37	
5185.00	15.090	98.480	5012.58	229.12	-255.87	1233.58	40°03'33.716"N	104°44'14.892"W	0.56	
5280.00	16.590	103.970	5103.98	233.99	-260.97	1258.98	40°03'33.666"N	104°44'14.566"W	2.23	
5375.00	16.400	108.840	5195.07	236.71	-268.57	1284.83	40°03'33.591"N	104°44'14.233"W	1.47	
5470.00	14.980	107.540	5286.53	238.50	-276.60	1309.23	40°03'33.511"N	104°44'13.919"W	1.54	
5565.00	15.160	111.480	5378.27	239.65	-284.85	1332.50	40°03'33.430"N	104°44'13.620"W	1.09	
5660.00	17.460	115.540	5469.44	238.97	-295.55	1356.92	40°03'33.324"N	104°44'13.306"W	2.70	
5755.00	17.410	115.540	5560.08	237.31	-307.82	1382.61	40°03'33.203"N	104°44'12.976"W	0.05	
5850.00	15.330	113.260	5651.22	236.25	-318.91	1406.97	40°03'33.093"N	104°44'12.662"W	2.29	
5945.00	15.590	112.940	5742.78	235.85	-328.84	1430.26	40°03'32.995"N	104°44'12.363"W	0.29	
6040.00	16.010	109.190	5834.20	236.37	-338.13	1454.39	40°03'32.903"N	104°44'12.052"W	1.16	
6135.00	13.530	106.950	5926.05	238.08	-345.67	1477.40	40°03'32.829"N	104°44'11.757"W	2.68	
6231.00	13.770	106.830	6019.34	240.17	-352.26	1499.08	40°03'32.763"N	104°44'11.478"W	0.25	
6326.00	13.680	102.080	6111.63	243.20	-357.88	1520.88	40°03'32.708"N	104°44'11.197"W	1.19	
6421.00	16.660	102.100	6203.31	247.56	-363.09	1545.19	40°03'32.656"N	104°44'10.885"W	3.14	
6516.00	15.300	94.030	6294.65	253.86	-366.82	1571.01	40°03'32.619"N	104°44'10.553"W	2.74	
6611.00	16.790	94.140	6385.94	262.02	-368.69	1597.20	40°03'32.601"N	104°44'10.216"W	1.57	
6706.00	17.760	93.930	6476.66	270.81	-370.68	1625.34	40°03'32.581"N	104°44'09.854"W	1.02	
6801.00	15.890	87.830	6567.59	280.72	-371.18	1652.80	40°03'32.576"N	104°44'09.501"W	2.70	
6896.00	16.650	71.430	6658.84	294.98	-366.35	1678.71	40°03'32.624"N	104°44'09.168"W	4.89	
6991.00	21.100	44.340	6748.88	319.77	-349.75	1703.62	40°03'32.788"N	104°44'08.847"W	10.22	
7086.00	31.620	24.220	6834.04	360.69	-314.64	1725.90	40°03'33.135"N	104°44'08.561"W	14.39	
7182.00	38.300	23.010	6912.68	415.65	-264.25	1747.87	40°03'33.633"N	104°44'08.278"W	7.00	
7277.00	43.480	20.190	6984.48	477.80	-206.43	1770.68	40°03'34.204"N	104°44'07.985"W	5.79	
7372.00	45.090	17.480	7052.49	544.00	-143.66	1792.07	40°03'34.825"N	104°44'07.709"W	2.61	
7467.00	46.710	15.320	7118.60	611.86	-78.21	1811.31	40°03'35.471"N	104°44'07.462"W	2.36	
7562.00	48.100	12.700	7182.90	681.07	-10.37	1828.22	40°03'36.142"N	104°44'07.244"W	2.50	
7657.00	50.600	11.640	7244.79	752.03	60.08	1843.40	40°03'36.838"N	104°44'07.049"W	2.76	
7752.00	61.130	11.220	7298.02	829.17	137.05	1858.94	40°03'37.599"N	104°44'06.849"W	11.09	
7847.00	68.950	9.770	7338.08	913.43	221.68	1874.59	40°03'38.435"N	104°44'06.648"W	8.35	
7942.00	69.900	8.470	7371.47	1000.06	309.49	1888.68	40°03'39.303"N	104°44'06.467"W	1.63	
8037.00	88.980	3.870	7388.81	1089.35	401.90	1898.55	40°03'40.216"N	104°44'06.339"W	20.63	TOP OF PRODUCTION
8149.00	92.370	2.110	7387.49	1195.09	513.72	1904.39	40°03'41.321"N	104°44'06.264"W	3.41	
8244.00	92.210	1.110	7383.69	1283.95	608.60	1907.06	40°03'42.259"N	104°44'06.230"W	1.07	
8339.00	90.610	359.360	7381.35	1372.03	703.57	1907.45	40°03'43.197"N	104°44'06.225"W	2.50	

REFERENCE WELLPATH IDENTIFICATION			
Operator	KERR-MCGEE OIL & GAS ONSHORE LP (LAMBERT STATE PLANE COORD)	Slot	SLOT#10 GRISWOLD 26N-11HZ (560'FSL & 1953'FEL, SEC.11)
Area	COLORADO	Well	GRISWOLD 26N-11HZ
Field	WELD COUNTY (KERR MCGEE)	Wellbore	GRISWOLD 26N-11HZ AWB <122-12302>
Facility	SEC.11-T1N-R66W		

WELLPATH DATA (125 stations)										
MD [ft]	Inclination [°]	Azimuth [°]	TVD [ft]	Vert Sect [ft]	North [ft]	East [ft]	Latitude	Longitude	DLS [°/100ft]	Comments
8433.00	88.640	358.630	7381.97	1458.42	797.54	1905.80	40°03'44.126"N	104°44'06.246"W	2.23	
8528.00	88.020	358.160	7384.74	1545.30	892.47	1903.14	40°03'45.064"N	104°44'06.280"W	0.82	
8623.00	88.580	358.280	7387.55	1632.06	987.38	1900.19	40°03'46.002"N	104°44'06.318"W	0.60	
8719.00	87.840	358.520	7390.55	1719.86	1083.29	1897.51	40°03'46.950"N	104°44'06.352"W	0.81	
8814.00	88.390	359.360	7393.68	1807.09	1178.22	1895.76	40°03'47.888"N	104°44'06.375"W	1.06	
8909.00	89.010	359.180	7395.83	1894.56	1273.19	1894.55	40°03'48.826"N	104°44'06.390"W	0.68	
9004.00	89.380	358.760	7397.17	1981.86	1368.17	1892.84	40°03'49.765"N	104°44'06.412"W	0.59	
9099.00	89.290	358.240	7398.27	2068.84	1463.13	1890.35	40°03'50.703"N	104°44'06.444"W	0.56	
9194.00	90.670	358.420	7398.30	2155.71	1558.08	1887.58	40°03'51.642"N	104°44'06.479"W	1.46	
9289.00	90.370	358.340	7397.44	2242.62	1653.04	1884.90	40°03'52.580"N	104°44'06.514"W	0.33	
9384.00	88.860	357.790	7398.08	2329.31	1747.98	1881.69	40°03'53.518"N	104°44'06.555"W	1.69	
9480.00	88.610	358.920	7400.20	2417.10	1843.92	1878.93	40°03'54.466"N	104°44'06.590"W	1.21	
9575.00	88.230	0.000	7402.82	2504.68	1938.88	1878.04	40°03'55.405"N	104°44'06.602"W	1.20	
9670.00	88.950	0.970	7405.16	2592.92	2033.84	1878.84	40°03'56.343"N	104°44'06.591"W	1.27	
9765.00	89.070	1.130	7406.80	2681.50	2128.81	1880.58	40°03'57.282"N	104°44'06.569"W	0.21	
9860.00	89.290	0.410	7408.16	2769.93	2223.79	1881.86	40°03'58.220"N	104°44'06.552"W	0.79	
9955.00	89.750	0.490	7408.95	2858.17	2318.79	1882.61	40°03'59.159"N	104°44'06.543"W	0.49	
10050.00	90.330	0.780	7408.89	2946.52	2413.78	1883.66	40°04'00.098"N	104°44'06.529"W	0.68	
10146.00	90.920	0.550	7407.84	3035.81	2509.77	1884.77	40°04'01.046"N	104°44'06.515"W	0.66	
10241.00	90.360	1.630	7406.78	3124.43	2604.74	1886.58	40°04'01.985"N	104°44'06.491"W	1.28	
10336.00	89.440	359.650	7406.94	3212.78	2699.73	1887.64	40°04'02.924"N	104°44'06.478"W	2.30	
10431.00	90.270	0.440	7407.19	3300.77	2794.73	1887.72	40°04'03.862"N	104°44'06.477"W	1.21	
10526.00	90.120	0.410	7406.86	3388.99	2889.73	1888.42	40°04'04.801"N	104°44'06.467"W	0.16	
10621.00	90.120	359.670	7406.66	3476.98	2984.72	1888.49	40°04'05.740"N	104°44'06.466"W	0.78	
10716.00	90.670	359.900	7406.01	3564.80	3079.72	1888.13	40°04'06.679"N	104°44'06.471"W	0.63	
10811.00	90.860	359.900	7404.74	3652.69	3174.71	1887.97	40°04'07.617"N	104°44'06.473"W	0.20	
11002.00	90.090	0.740	7403.16	3829.92	3365.70	1889.03	40°04'09.505"N	104°44'06.459"W	0.60	
11192.00	89.720	0.800	7403.47	4006.79	3555.68	1891.59	40°04'11.382"N	104°44'06.426"W	0.20	
11382.00	90.550	1.490	7403.02	4184.11	3745.64	1895.38	40°04'13.260"N	104°44'06.377"W	0.57	
11572.00	91.010	0.530	7400.44	4361.25	3935.59	1898.73	40°04'15.137"N	104°44'06.334"W	0.56	
11762.00	90.460	0.330	7398.00	4537.69	4125.57	1900.16	40°04'17.014"N	104°44'06.315"W	0.31	
11952.00	89.960	0.100	7397.30	4713.87	4315.57	1900.87	40°04'18.892"N	104°44'06.306"W	0.29	
12139.00	89.010	0.900	7398.98	4887.61	4502.55	1902.50	40°04'20.739"N	104°44'06.285"W	0.66	
12242.00	88.550	0.150	7401.18	4983.31	4605.52	1903.45	40°04'21.757"N	104°44'06.272"W	0.85	LAST BHI MWD+IFR SURVEY
12302.00	88.550	0.150	7402.70	5038.91	4665.50	1903.60	40°04'22.350"N	104°44'06.270"W	0.00	PROJECTION TO BIT

HOLE & CASING SECTIONS - Ref Wellbore: GRISWOLD 26N-11HZ AWB <122-12302> Ref Wellpath: GRISWOLD 26N-11HZ AWP									
String/Diameter	Start MD [ft]	End MD [ft]	Interval [ft]	Start TVD [ft]	End TVD [ft]	Start N/S [ft]	Start E/W [ft]	End N/S [ft]	End E/W [ft]
13.5in Open Hole	16.00	1754.00	1738.00	16.00	1717.93	0.00	0.00	-66.63	297.62
9.625in Casing Surface	16.00	1744.00	1728.00	16.00	1708.36	0.00	0.00	-66.13	294.78
8.75in Open Hole	1754.00	8037.00	6283.00	1717.93	7388.81	-66.63	297.62	401.90	1898.55
7.875in Open Hole	8037.00	12302.00	4265.00	7388.81	7402.70	401.90	1898.55	4665.50	1903.60



# Actual Wellpath Report

GRISWOLD 26N-11HZ AWP

Page 5 of 6



REFERENCE WELLPATH IDENTIFICATION			
Operator	KERR-MCGEE OIL & GAS ONSHORE LP (LAMBERT STATE PLANE COORD)	Slot	SLOT#10 GRISWOLD 26N-11HZ (560'FSL & 1953'FEL, SEC.11)
Area	COLORADO	Well	GRISWOLD 26N-11HZ
Field	WELD COUNTY (KERR MCGEE)	Wellbore	GRISWOLD 26N-11HZ AWB <122-12302>
Facility	SEC.11-T1N-R66W		

WELLPATH COMPOSITION - Ref Wellbore: GRISWOLD 26N-11HZ AWB <122-12302> Ref Wellpath: GRISWOLD 26N-11HZ AWP				
Start MD [ft]	End MD [ft]	Positional Uncertainty Model	Log Name/Comment	Wellbore
16.00	1709.00	ISCWSA MWD, Rev. 2 (Standard)	CATHEDRAL MWD SURVEYS <122-1709>	GRISWOLD 26N-11HZ AWB <122-12302>
1709.00	8037.00	NaviTrak (MAGCORR,IFR)	BHI NAVITRAK MWD+IFR 8 3/4" <1764-8037>	GRISWOLD 26N-11HZ AWB <122-12302>
8037.00	12242.00	NaviTrak (MAGCORR,IFR)	BHI NAVITRAK MWD+IFR 7 7/8" <8149-12242>	GRISWOLD 26N-11HZ AWB <122-12302>
12242.00	12302.00	Blind Drilling (std)	Projection to bit	GRISWOLD 26N-11HZ AWB <122-12302>

# Actual Wellpath Report

GRISWOLD 26N-11HZ AWP

Page 6 of 6

REFERENCE WELLPATH IDENTIFICATION			
Operator	KERR-MCGEE OIL & GAS ONSHORE LP (LAMBERT STATE PLANE COORD)	Slot	SLOT#10 GRISWOLD 26N-11HZ (560'FSL & 1953'FEL, SEC.11)
Area	COLORADO	Well	GRISWOLD 26N-11HZ
Field	WELD COUNTY (KERR MCGEE)	Wellbore	GRISWOLD 26N-11HZ AWB <122-12302>
Facility	SEC.11-T1N-R66W		

WELLPATH COMMENTS				
MD [ft]	Inclination [°]	Azimuth [°]	TVD [ft]	Comment
16.00	0.000	31.800	16.00	TIE ON
122.00	0.700	31.800	122.00	BEGIN CATHEDRAL MWD SURVEYS
1709.00	16.200	100.800	1674.79	TIE ONTO CATHEDRAL MWD SURVEYS
1764.00	17.010	99.740	1727.50	BEGIN BHI MWD+IFR SURVEYS
8037.00	88.980	3.870	7388.81	TOP OF PRODUCTION
12242.00	88.550	0.150	7401.18	LAST BHI MWD+IFR SURVEY
12302.00	88.550	0.150	7402.70	PROJECTION TO BIT