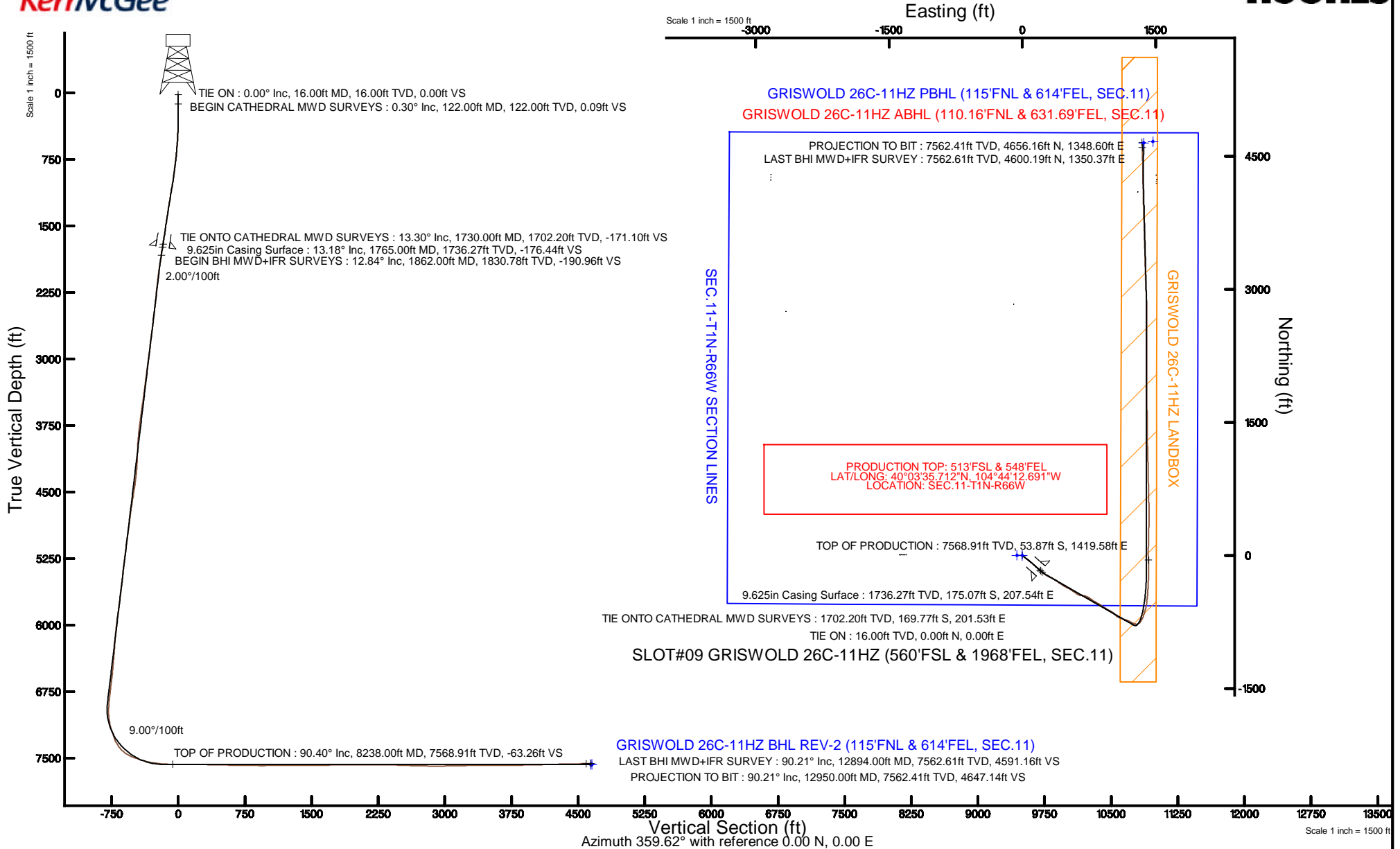


KERR-MCGEE OIL & GAS ONSHORE LP (LAMBERT STATE PLANE COORD)

Location: COLORADO Slot: SLOT#09 GRISWOLD 26C-11HZ (560'FSL & 1968'FEL, SEC.11)
 Field: WELD COUNTY (KERR MCGEE) Well: GRISWOLD 26C-11HZ
 Facility: SEC.11-T1N-R66W Wellbore: GRISWOLD 26C-11HZ PWB

Plot reference wellpath is GRISWOLD 26C-11HZ (REV-A.1) PWP

| | |
|--|--|
| True vertical depths are referenced to XTREME 24 (16'KB) (RKB) | Grid System: NAD83 / Lambert Colorado SP, Northern Zone (501), US feet |
| Measured depths are referenced to XTREME 24 (16'KB) (RKB) | North Reference: True north |
| XTREME 24 (16'KB) (RKB) to Mean Sea Level: 5141 feet | Scale: True distance |
| Mean Sea Level to Mud line (At Slot: SLOT#09 GRISWOLD 26C-11HZ (560'FSL & 1968'FEL, SEC.11)): 0 feet | Depths are in feet |
| Coordinates are in feet referenced to Slot | Created by: robiale01 on 3/11/2015 |



Actual Wellpath Report

GRISWOLD 26C-11HZ AWP

Page 1 of 6

| REFERENCE WELLPATH IDENTIFICATION | | | |
|-----------------------------------|---|----------|--|
| Operator | KERR-MCGEE OIL & GAS ONSHORE LP (LAMBERT STATE PLANE COORD) | Slot | SLOT#09 GRISWOLD 26C-11HZ (560'FSL & 1968'FEL, SEC.11) |
| Area | COLORADO | Well | GRISWOLD 26C-11HZ |
| Field | WELD COUNTY (KERR MCGEE) | Wellbore | GRISWOLD 26C-11HZ AWB <122-12950> |
| Facility | SEC.11-T1N-R66W | | |

| REPORT SETUP INFORMATION | | | |
|--------------------------|---|----------------------|--|
| Projection System | NAD83 / Lambert Colorado SP, Northern Zone (501), US feet | Software System | WellArchitect® 4.1.1 |
| North Reference | True | User | Robiale01 |
| Scale | 0.999962 | Report Generated | 3/11/2015 at 3:47:46 PM |
| Convergence at slot | 0.49° East | Database/Source file | WellArchitectDB/GRISWOLD_26C-11HZ_AWB_122-12950_.xml |

| WELLPATH LOCATION | | | | | | |
|-----------------------|-------------------|----------|-------------------|-------------------|------------------------|-----------------|
| | Local coordinates | | Grid coordinates | | Geographic coordinates | |
| | North[ft] | East[ft] | Easting[US ft] | Northing[US ft] | Latitude | Longitude |
| Slot Location | -4234.32 | 2830.28 | 3212186.39 | 1265635.10 | 40°03'36.245"N | 104°44'30.948"W |
| Facility Reference Pt | | | 3209320.61 | 1269845.23 | 40°04'18.091"N | 104°45'07.348"W |
| Field Reference Pt | | | 3197771.84 | 1268891.29 | 40°04'09.600"N | 104°47'36.000"W |

| WELLPATH DATUM | | | |
|--------------------------|-------------------------|--|-------------------|
| Calculation method | Minimum curvature | XTREME 24 (16'KB) (RKB) to Facility Vertical Datum | 5141.00ft |
| Horizontal Reference Pt | Slot | XTREME 24 (16'KB) (RKB) to Mean Sea Level | 5141.00ft |
| Vertical Reference Pt | XTREME 24 (16'KB) (RKB) | XTREME 24 (16'KB) (RKB) to Mud Line at Slot (SLOT#09 GRISWOLD 26C-11HZ (560'FSL & 1968'FEL, SEC.11)) | 5141.00ft |
| MD Reference Pt | XTREME 24 (16'KB) (RKB) | Section Origin | N 0.00, E 0.00 ft |
| Field Vertical Reference | Mean Sea Level | Section Azimuth | 16.15° |

Actual Wellpath Report

GRISWOLD 26C-11HZ AWP

Page 2 of 6

| REFERENCE WELLPATH IDENTIFICATION | | | |
|-----------------------------------|---|----------|--|
| Operator | KERR-MCGEE OIL & GAS ONSHORE LP (LAMBERT STATE PLANE COORD) | Slot | SLOT#09 GRISWOLD 26C-11HZ (560'FSL & 1968'FEL, SEC.11) |
| Area | COLORADO | Well | GRISWOLD 26C-11HZ |
| Field | WELD COUNTY (KERR MCGEE) | Wellbore | GRISWOLD 26C-11HZ AWB <122-12950> |
| Facility | SEC.11-T1N-R66W | | |

| WELLPATH DATA (131 stations) † = interpolated/extrapolated station | | | | | | | | | | |
|--|-----------------|-------------|----------|----------------|------------|-----------|----------------|-----------------|---------------|--------------------------------|
| MD [ft] | Inclination [°] | Azimuth [°] | TVD [ft] | Vert Sect [ft] | North [ft] | East [ft] | Latitude | Longitude | DLS [°/100ft] | Comments |
| 0.00† | 0.000 | 71.500 | 0.00 | 0.00 | 0.00 | 0.00 | 40°03'36.245°N | 104°44'30.948°W | 0.00 | |
| 16.00 | 0.000 | 71.500 | 16.00 | 0.00 | 0.00 | 0.00 | 40°03'36.245°N | 104°44'30.948°W | 0.00 | TIE ON |
| 122.00 | 0.300 | 71.500 | 122.00 | 0.16 | 0.09 | 0.26 | 40°03'36.246°N | 104°44'30.945°W | 0.28 | BEGIN CATHEDRAL MWD SURVEYS |
| 211.00 | 0.100 | 98.300 | 211.00 | 0.30 | 0.15 | 0.56 | 40°03'36.246°N | 104°44'30.941°W | 0.24 | |
| 297.00 | 1.100 | 163.500 | 296.99 | -0.38 | -0.65 | 0.87 | 40°03'36.239°N | 104°44'30.937°W | 1.23 | |
| 385.00 | 2.200 | 133.200 | 384.96 | -1.86 | -2.62 | 2.34 | 40°03'36.219°N | 104°44'30.918°W | 1.55 | |
| 474.00 | 4.200 | 130.000 | 473.81 | -3.96 | -5.88 | 6.08 | 40°03'36.187°N | 104°44'30.870°W | 2.26 | |
| 569.00 | 6.000 | 127.900 | 568.43 | -7.20 | -11.17 | 12.67 | 40°03'36.135°N | 104°44'30.785°W | 1.90 | |
| 663.00 | 8.400 | 128.000 | 661.69 | -11.58 | -18.42 | 21.95 | 40°03'36.063°N | 104°44'30.666°W | 2.55 | |
| 760.00 | 10.800 | 126.100 | 757.32 | -17.32 | -28.13 | 34.88 | 40°03'35.967°N | 104°44'30.499°W | 2.50 | |
| 854.00 | 11.800 | 129.300 | 849.50 | -24.10 | -39.41 | 49.44 | 40°03'35.856°N | 104°44'30.312°W | 1.26 | |
| 950.00 | 12.800 | 128.500 | 943.29 | -32.00 | -52.25 | 65.36 | 40°03'35.729°N | 104°44'30.107°W | 1.06 | |
| 1046.00 | 13.700 | 129.400 | 1036.74 | -40.53 | -66.08 | 82.46 | 40°03'35.592°N | 104°44'29.887°W | 0.96 | |
| 1142.00 | 15.000 | 129.900 | 1129.74 | -50.02 | -81.27 | 100.78 | 40°03'35.442°N | 104°44'29.652°W | 1.36 | |
| 1235.00 | 13.700 | 131.700 | 1219.84 | -59.62 | -96.32 | 118.24 | 40°03'35.293°N | 104°44'29.427°W | 1.48 | |
| 1330.00 | 13.400 | 131.000 | 1312.19 | -69.10 | -111.02 | 134.94 | 40°03'35.148°N | 104°44'29.213°W | 0.36 | |
| 1426.00 | 12.400 | 133.000 | 1405.77 | -78.43 | -125.35 | 150.88 | 40°03'35.006°N | 104°44'29.008°W | 1.14 | |
| 1522.00 | 12.500 | 130.900 | 1499.51 | -87.43 | -139.18 | 166.27 | 40°03'34.870°N | 104°44'28.810°W | 0.48 | |
| 1616.00 | 13.000 | 130.700 | 1591.19 | -96.08 | -152.74 | 181.97 | 40°03'34.736°N | 104°44'28.608°W | 0.53 | |
| 1730.00 | 13.300 | 131.400 | 1702.20 | -107.00 | -169.77 | 201.53 | 40°03'34.567°N | 104°44'28.356°W | 0.30 | TIE ONTO CATHEDRAL MWD SURVEYS |
| 1862.00 | 12.840 | 131.240 | 1830.78 | -119.70 | -189.48 | 223.95 | 40°03'34.373°N | 104°44'28.068°W | 0.35 | BEGIN BHI MWD+IFR SURVEYS |
| 1957.00 | 14.010 | 129.490 | 1923.19 | -128.73 | -203.75 | 240.76 | 40°03'34.231°N | 104°44'27.852°W | 1.30 | |
| 2051.00 | 13.580 | 122.690 | 2014.48 | -136.38 | -216.95 | 258.83 | 40°03'34.101°N | 104°44'27.619°W | 1.78 | |
| 2146.00 | 13.320 | 120.820 | 2106.88 | -142.32 | -228.58 | 277.62 | 40°03'33.986°N | 104°44'27.378°W | 0.53 | |
| 2241.00 | 12.620 | 117.660 | 2199.45 | -147.16 | -239.00 | 296.21 | 40°03'33.883°N | 104°44'27.139°W | 1.05 | |
| 2336.00 | 12.900 | 115.310 | 2292.11 | -150.92 | -248.36 | 314.98 | 40°03'33.791°N | 104°44'26.897°W | 0.62 | |
| 2431.00 | 12.870 | 116.300 | 2384.72 | -154.47 | -257.58 | 334.06 | 40°03'33.700°N | 104°44'26.652°W | 0.23 | |
| 2526.00 | 12.150 | 122.540 | 2477.46 | -159.16 | -267.64 | 351.97 | 40°03'33.600°N | 104°44'26.421°W | 1.61 | |
| 2622.00 | 12.420 | 121.640 | 2571.27 | -164.76 | -278.49 | 369.28 | 40°03'33.493°N | 104°44'26.199°W | 0.34 | |
| 2717.00 | 11.820 | 123.380 | 2664.15 | -170.37 | -289.20 | 386.10 | 40°03'33.387°N | 104°44'25.982°W | 0.74 | |
| 2812.00 | 13.580 | 125.690 | 2756.82 | -176.99 | -301.07 | 403.28 | 40°03'33.270°N | 104°44'25.761°W | 1.93 | |
| 2906.00 | 13.510 | 124.770 | 2848.21 | -184.18 | -313.77 | 421.27 | 40°03'33.144°N | 104°44'25.530°W | 0.24 | |
| 3002.00 | 13.160 | 122.790 | 2941.62 | -190.89 | -326.08 | 439.66 | 40°03'33.023°N | 104°44'25.294°W | 0.60 | |
| 3096.00 | 13.310 | 122.150 | 3033.12 | -196.94 | -337.63 | 457.82 | 40°03'32.908°N | 104°44'25.060°W | 0.22 | |
| 3191.00 | 14.240 | 118.810 | 3125.39 | -202.51 | -349.08 | 477.32 | 40°03'32.795°N | 104°44'24.809°W | 1.29 | |
| 3286.00 | 14.890 | 118.600 | 3217.34 | -207.70 | -360.56 | 498.27 | 40°03'32.682°N | 104°44'24.540°W | 0.69 | |
| 3381.00 | 15.130 | 117.260 | 3309.10 | -212.72 | -372.08 | 520.01 | 40°03'32.568°N | 104°44'24.260°W | 0.44 | |
| 3477.00 | 14.140 | 121.510 | 3401.98 | -218.24 | -383.94 | 541.15 | 40°03'32.451°N | 104°44'23.988°W | 1.52 | |
| 3572.00 | 15.070 | 123.070 | 3493.91 | -224.91 | -396.75 | 561.39 | 40°03'32.324°N | 104°44'23.728°W | 1.06 | |
| 3762.00 | 11.830 | 126.250 | 3678.68 | -238.79 | -421.75 | 597.80 | 40°03'32.077°N | 104°44'23.260°W | 1.75 | |
| 3857.00 | 12.270 | 126.800 | 3771.59 | -245.69 | -433.55 | 613.74 | 40°03'31.960°N | 104°44'23.055°W | 0.48 | |
| 4048.00 | 14.160 | 100.530 | 3957.69 | -250.57 | -450.00 | 653.00 | 40°03'31.798°N | 104°44'22.550°W | 3.26 | |
| 4143.00 | 13.830 | 99.200 | 4049.87 | -248.05 | -453.94 | 675.63 | 40°03'31.759°N | 104°44'22.259°W | 0.49 | |
| 4238.00 | 12.600 | 99.590 | 4142.35 | -245.49 | -457.48 | 697.06 | 40°03'31.724°N | 104°44'21.983°W | 1.30 | |
| 4333.00 | 13.490 | 107.750 | 4234.90 | -244.62 | -462.58 | 717.83 | 40°03'31.674°N | 104°44'21.716°W | 2.15 | |

| REFERENCE WELLPATH IDENTIFICATION | | | |
|-----------------------------------|---|----------|--|
| Operator | KERR-MCGEE OIL & GAS ONSHORE LP (LAMBERT STATE PLANE COORD) | Slot | SLOT#09 GRISWOLD 26C-11HZ (560'FSL & 1968'FEL, SEC.11) |
| Area | COLORADO | Well | GRISWOLD 26C-11HZ |
| Field | WELD COUNTY (KERR MCGEE) | Wellbore | GRISWOLD 26C-11HZ AWP <122-12950> |
| Facility | SEC.11-T1N-R66W | | |

| WELLPATH DATA (131 stations) | | | | | | | | | | |
|------------------------------|-----------------|-------------|----------|----------------|------------|-----------|----------------|-----------------|---------------|-------------------|
| MD [ft] | Inclination [°] | Azimuth [°] | TVD [ft] | Vert Sect [ft] | North [ft] | East [ft] | Latitude | Longitude | DLS [°/100ft] | Comments |
| 4428.00 | 12.330 | 119.620 | 4327.52 | -247.29 | -470.98 | 737.20 | 40°03'31.591"N | 104°44'21.467"W | 3.04 | |
| 4522.00 | 14.780 | 124.580 | 4418.90 | -253.42 | -482.74 | 755.81 | 40°03'31.474"N | 104°44'21.228"W | 2.88 | |
| 4617.00 | 16.150 | 124.670 | 4510.45 | -261.45 | -497.14 | 776.65 | 40°03'31.332"N | 104°44'20.960"W | 1.44 | |
| 4712.00 | 15.610 | 122.630 | 4601.83 | -269.27 | -511.55 | 798.28 | 40°03'31.190"N | 104°44'20.682"W | 0.82 | |
| 4807.00 | 15.210 | 122.050 | 4693.41 | -276.31 | -525.05 | 819.61 | 40°03'31.056"N | 104°44'20.407"W | 0.45 | |
| 4902.00 | 14.350 | 118.310 | 4785.27 | -282.20 | -537.25 | 840.54 | 40°03'30.936"N | 104°44'20.138"W | 1.35 | |
| 4997.00 | 13.960 | 123.140 | 4877.39 | -288.03 | -549.10 | 860.50 | 40°03'30.819"N | 104°44'19.881"W | 1.31 | |
| 5092.00 | 13.240 | 122.290 | 4969.73 | -294.40 | -561.17 | 879.29 | 40°03'30.699"N | 104°44'19.640"W | 0.79 | |
| 5187.00 | 13.960 | 122.670 | 5062.06 | -300.68 | -573.17 | 898.13 | 40°03'30.581"N | 104°44'19.397"W | 0.76 | |
| 5282.00 | 13.400 | 121.020 | 5154.37 | -306.76 | -585.03 | 917.21 | 40°03'30.463"N | 104°44'19.152"W | 0.72 | |
| 5378.00 | 12.860 | 125.430 | 5247.86 | -313.14 | -596.95 | 935.45 | 40°03'30.346"N | 104°44'18.918"W | 1.19 | |
| 5473.00 | 12.350 | 122.960 | 5340.57 | -319.57 | -608.61 | 952.59 | 40°03'30.230"N | 104°44'18.697"W | 0.78 | |
| 5568.00 | 12.540 | 112.490 | 5433.35 | -323.65 | -618.08 | 970.64 | 40°03'30.137"N | 104°44'18.465"W | 2.38 | |
| 5663.00 | 13.370 | 116.290 | 5525.93 | -326.72 | -626.89 | 990.02 | 40°03'30.050"N | 104°44'18.216"W | 1.25 | |
| 5757.00 | 12.130 | 123.400 | 5617.62 | -331.56 | -637.15 | 1008.01 | 40°03'29.948"N | 104°44'17.984"W | 2.13 | |
| 5852.00 | 11.630 | 131.660 | 5710.59 | -338.64 | -649.01 | 1023.50 | 40°03'29.831"N | 104°44'17.785"W | 1.86 | |
| 5947.00 | 11.910 | 133.070 | 5803.59 | -347.20 | -662.07 | 1037.82 | 40°03'29.702"N | 104°44'17.601"W | 0.42 | |
| 6042.00 | 11.550 | 134.200 | 5896.61 | -356.11 | -675.39 | 1051.80 | 40°03'29.570"N | 104°44'17.421"W | 0.45 | |
| 6138.00 | 10.970 | 129.410 | 5990.76 | -364.24 | -687.89 | 1065.74 | 40°03'29.447"N | 104°44'17.242"W | 1.15 | |
| 6233.00 | 9.430 | 117.650 | 6084.27 | -369.36 | -697.24 | 1079.62 | 40°03'29.354"N | 104°44'17.063"W | 2.72 | |
| 6328.00 | 12.260 | 110.230 | 6177.57 | -371.63 | -704.34 | 1095.98 | 40°03'29.284"N | 104°44'16.853"W | 3.32 | |
| 6423.00 | 13.520 | 108.130 | 6270.17 | -372.73 | -711.29 | 1116.00 | 40°03'29.216"N | 104°44'16.596"W | 1.41 | |
| 6519.00 | 14.530 | 108.230 | 6363.31 | -373.55 | -718.55 | 1138.11 | 40°03'29.144"N | 104°44'16.311"W | 1.05 | |
| 6614.00 | 14.080 | 108.990 | 6455.36 | -374.56 | -726.03 | 1160.35 | 40°03'29.070"N | 104°44'16.025"W | 0.51 | |
| 6709.00 | 14.420 | 111.670 | 6547.44 | -376.27 | -734.16 | 1182.27 | 40°03'28.990"N | 104°44'15.743"W | 0.78 | |
| 6804.00 | 16.080 | 115.370 | 6639.09 | -379.51 | -744.17 | 1205.16 | 40°03'28.891"N | 104°44'15.449"W | 2.02 | |
| 6899.00 | 14.520 | 117.730 | 6730.72 | -384.01 | -755.35 | 1227.59 | 40°03'28.780"N | 104°44'15.161"W | 1.77 | |
| 6994.00 | 13.480 | 117.930 | 6822.90 | -388.66 | -766.08 | 1247.91 | 40°03'28.674"N | 104°44'14.899"W | 1.10 | |
| 7090.00 | 15.820 | 102.240 | 6915.81 | -390.05 | -774.10 | 1270.60 | 40°03'28.595"N | 104°44'14.607"W | 4.78 | |
| 7184.00 | 15.260 | 79.730 | 7006.46 | -383.67 | -774.61 | 1295.31 | 40°03'28.590"N | 104°44'14.290"W | 6.40 | |
| 7279.00 | 16.590 | 46.420 | 7098.00 | -366.35 | -763.00 | 1317.49 | 40°03'28.704"N | 104°44'14.004"W | 9.59 | |
| 7374.00 | 19.510 | 29.640 | 7188.37 | -339.19 | -739.85 | 1335.17 | 40°03'28.933"N | 104°44'13.777"W | 6.25 | |
| 7469.00 | 23.020 | 27.100 | 7276.89 | -305.51 | -709.51 | 1351.48 | 40°03'29.233"N | 104°44'13.567"W | 3.82 | |
| 7564.00 | 35.520 | 18.720 | 7359.63 | -259.51 | -666.65 | 1368.88 | 40°03'29.657"N | 104°44'13.343"W | 13.82 | |
| 7660.00 | 51.010 | 13.940 | 7429.35 | -193.95 | -603.63 | 1386.93 | 40°03'30.279"N | 104°44'13.111"W | 16.48 | |
| 7760.00 | 67.780 | 6.990 | 7480.12 | -108.73 | -519.29 | 1402.05 | 40°03'31.113"N | 104°44'12.917"W | 17.79 | |
| 7858.00 | 71.370 | 4.550 | 7514.32 | -18.43 | -427.94 | 1411.26 | 40°03'32.016"N | 104°44'12.798"W | 4.34 | |
| 7953.00 | 76.880 | 2.670 | 7540.30 | 70.73 | -336.78 | 1416.99 | 40°03'32.916"N | 104°44'12.724"W | 6.10 | |
| 8048.00 | 82.960 | 1.280 | 7556.92 | 161.36 | -243.35 | 1420.20 | 40°03'33.840"N | 104°44'12.683"W | 6.56 | |
| 8143.00 | 86.080 | 359.390 | 7565.99 | 252.33 | -148.80 | 1420.75 | 40°03'34.774"N | 104°44'12.676"W | 3.83 | |
| 8238.00 | 90.400 | 359.200 | 7568.91 | 343.18 | -53.87 | 1419.58 | 40°03'35.712"N | 104°44'12.691"W | 4.55 | TOP OF PRODUCTION |
| 8333.00 | 89.780 | 359.670 | 7568.76 | 434.17 | 41.12 | 1418.64 | 40°03'36.651"N | 104°44'12.703"W | 0.82 | |
| 8428.00 | 89.720 | 1.760 | 7569.17 | 525.73 | 136.11 | 1419.83 | 40°03'37.590"N | 104°44'12.688"W | 2.20 | |
| 8523.00 | 88.730 | 1.480 | 7570.46 | 617.68 | 231.06 | 1422.51 | 40°03'38.528"N | 104°44'12.653"W | 1.08 | |
| 8617.00 | 88.480 | 0.540 | 7572.75 | 708.39 | 325.01 | 1424.17 | 40°03'39.456"N | 104°44'12.632"W | 1.03 | |

| REFERENCE WELLPATH IDENTIFICATION | | | |
|-----------------------------------|---|----------|--|
| Operator | KERR-MCGEE OIL & GAS ONSHORE LP (LAMBERT STATE PLANE COORD) | Slot | SLOT#09 GRISWOLD 26C-11HZ (560'FSL & 1968'FEL, SEC.11) |
| Area | COLORADO | Well | GRISWOLD 26C-11HZ |
| Field | WELD COUNTY (KERR MCGEE) | Wellbore | GRISWOLD 26C-11HZ AWB <122-12950> |
| Facility | SEC.11-T1N-R66W | | |

| WELLPATH DATA (131 stations) | | | | | | | | | | |
|------------------------------|-----------------|-------------|----------|----------------|------------|-----------|----------------|-----------------|---------------|-------------------------|
| MD [ft] | Inclination [°] | Azimuth [°] | TVD [ft] | Vert Sect [ft] | North [ft] | East [ft] | Latitude | Longitude | DLS [°/100ft] | Comments |
| 8713.00 | 88.890 | 0.530 | 7574.95 | 800.82 | 420.99 | 1425.07 | 40°03'40.405"N | 104°44'12.620"W | 0.43 | |
| 8903.00 | 88.480 | 358.410 | 7579.31 | 982.77 | 610.92 | 1423.31 | 40°03'42.282"N | 104°44'12.642"W | 1.14 | |
| 9093.00 | 89.780 | 359.050 | 7582.20 | 1164.02 | 800.84 | 1419.10 | 40°03'44.159"N | 104°44'12.697"W | 0.76 | |
| 9188.00 | 89.160 | 359.290 | 7583.08 | 1254.88 | 895.83 | 1417.72 | 40°03'45.097"N | 104°44'12.714"W | 0.70 | |
| 9283.00 | 90.700 | 358.500 | 7583.19 | 1345.60 | 990.81 | 1415.89 | 40°03'46.036"N | 104°44'12.738"W | 1.82 | |
| 9378.00 | 91.630 | 357.760 | 7581.26 | 1435.92 | 1085.73 | 1412.79 | 40°03'46.974"N | 104°44'12.777"W | 1.25 | |
| 9473.00 | 90.980 | 358.770 | 7579.10 | 1526.30 | 1180.66 | 1409.92 | 40°03'47.912"N | 104°44'12.814"W | 1.26 | |
| 9569.00 | 89.750 | 359.140 | 7578.48 | 1618.00 | 1276.64 | 1408.17 | 40°03'48.861"N | 104°44'12.837"W | 1.34 | |
| 9759.00 | 89.660 | 359.630 | 7579.46 | 1799.92 | 1466.63 | 1406.13 | 40°03'50.738"N | 104°44'12.863"W | 0.26 | |
| 9949.00 | 90.520 | 358.800 | 7579.16 | 1981.67 | 1656.61 | 1403.52 | 40°03'52.616"N | 104°44'12.896"W | 0.63 | |
| 10044.00 | 91.780 | 359.910 | 7577.26 | 2072.60 | 1751.58 | 1402.45 | 40°03'53.554"N | 104°44'12.910"W | 1.77 | |
| 10139.00 | 90.950 | 359.530 | 7574.99 | 2163.69 | 1846.55 | 1401.99 | 40°03'54.493"N | 104°44'12.916"W | 0.96 | |
| 10234.00 | 89.290 | 359.500 | 7574.80 | 2254.71 | 1941.54 | 1401.19 | 40°03'55.431"N | 104°44'12.926"W | 1.75 | |
| 10330.00 | 90.060 | 359.460 | 7575.34 | 2346.67 | 2037.54 | 1400.31 | 40°03'56.380"N | 104°44'12.937"W | 0.80 | |
| 10425.00 | 90.090 | 0.180 | 7575.22 | 2437.84 | 2132.54 | 1400.02 | 40°03'57.319"N | 104°44'12.941"W | 0.76 | |
| 10520.00 | 90.670 | 0.970 | 7574.59 | 2529.35 | 2227.53 | 1400.97 | 40°03'58.258"N | 104°44'12.929"W | 1.03 | |
| 10616.00 | 89.660 | 0.440 | 7574.31 | 2621.88 | 2323.52 | 1402.15 | 40°03'59.206"N | 104°44'12.913"W | 1.19 | |
| 10711.00 | 87.870 | 0.050 | 7576.36 | 2713.21 | 2418.49 | 1402.56 | 40°04'00.145"N | 104°44'12.908"W | 1.93 | |
| 10805.00 | 87.810 | 0.470 | 7579.90 | 2803.55 | 2512.42 | 1402.98 | 40°04'01.073"N | 104°44'12.903"W | 0.45 | |
| 10900.00 | 88.300 | 359.920 | 7583.12 | 2894.84 | 2607.37 | 1403.31 | 40°04'02.011"N | 104°44'12.898"W | 0.78 | |
| 10995.00 | 88.240 | 359.810 | 7585.99 | 2985.99 | 2702.33 | 1403.08 | 40°04'02.950"N | 104°44'12.901"W | 0.13 | |
| 11091.00 | 89.260 | 358.430 | 7588.09 | 3077.75 | 2798.29 | 1401.61 | 40°04'03.898"N | 104°44'12.920"W | 1.79 | |
| 11186.00 | 90.120 | 357.150 | 7588.60 | 3167.91 | 2893.21 | 1397.94 | 40°04'04.836"N | 104°44'12.967"W | 1.62 | |
| 11281.00 | 90.150 | 357.210 | 7588.38 | 3257.75 | 2988.10 | 1393.27 | 40°04'05.774"N | 104°44'13.027"W | 0.07 | |
| 11376.00 | 92.030 | 358.130 | 7586.57 | 3347.82 | 3083.00 | 1389.41 | 40°04'06.711"N | 104°44'13.077"W | 2.20 | |
| 11472.00 | 90.610 | 358.300 | 7584.36 | 3439.13 | 3178.92 | 1386.42 | 40°04'07.659"N | 104°44'13.115"W | 1.49 | |
| 11567.00 | 91.170 | 358.130 | 7582.88 | 3529.50 | 3273.86 | 1383.46 | 40°04'08.598"N | 104°44'13.153"W | 0.62 | |
| 11662.00 | 89.630 | 358.630 | 7582.22 | 3619.96 | 3368.82 | 1380.78 | 40°04'09.536"N | 104°44'13.188"W | 1.70 | |
| 11756.00 | 89.560 | 358.730 | 7582.88 | 3709.62 | 3462.79 | 1378.61 | 40°04'10.465"N | 104°44'13.215"W | 0.13 | |
| 11852.00 | 90.460 | 358.640 | 7582.87 | 3801.20 | 3558.77 | 1376.41 | 40°04'11.413"N | 104°44'13.244"W | 0.94 | |
| 11946.00 | 90.210 | 358.590 | 7582.32 | 3890.82 | 3652.74 | 1374.14 | 40°04'12.342"N | 104°44'13.273"W | 0.27 | |
| 12042.00 | 91.130 | 357.530 | 7581.19 | 3982.07 | 3748.67 | 1370.89 | 40°04'13.290"N | 104°44'13.314"W | 1.46 | |
| 12136.00 | 91.290 | 358.000 | 7579.21 | 4071.25 | 3842.58 | 1367.22 | 40°04'14.218"N | 104°44'13.362"W | 0.53 | |
| 12230.00 | 91.040 | 358.600 | 7577.30 | 4160.70 | 3936.52 | 1364.43 | 40°04'15.146"N | 104°44'13.397"W | 0.69 | |
| 12324.00 | 91.530 | 359.130 | 7575.19 | 4250.43 | 4030.48 | 1362.57 | 40°04'16.075"N | 104°44'13.421"W | 0.77 | |
| 12418.00 | 91.410 | 358.510 | 7572.78 | 4340.14 | 4124.43 | 1360.64 | 40°04'17.003"N | 104°44'13.446"W | 0.67 | |
| 12514.00 | 91.780 | 358.630 | 7570.11 | 4431.61 | 4220.36 | 1358.24 | 40°04'17.951"N | 104°44'13.477"W | 0.41 | |
| 12608.00 | 91.260 | 359.100 | 7567.61 | 4521.34 | 4314.31 | 1356.38 | 40°04'18.880"N | 104°44'13.501"W | 0.75 | |
| 12797.00 | 91.100 | 358.800 | 7563.72 | 4701.84 | 4503.23 | 1352.92 | 40°04'20.747"N | 104°44'13.545"W | 0.18 | |
| 12894.00 | 90.210 | 358.190 | 7562.61 | 4794.26 | 4600.19 | 1350.37 | 40°04'21.705"N | 104°44'13.578"W | 1.11 | LAST BHI MWD+IFR SURVEY |
| 12950.00 | 90.210 | 358.190 | 7562.41 | 4847.53 | 4656.16 | 1348.60 | 40°04'22.258"N | 104°44'13.601"W | 0.00 | PROJECTION TO BIT |

Actual Wellpath Report

GRISWOLD 26C-11HZ AWP

Page 5 of 6

| REFERENCE WELLPATH IDENTIFICATION | | | |
|-----------------------------------|---|----------|--|
| Operator | KERR-MCGEE OIL & GAS ONSHORE LP (LAMBERT STATE PLANE COORD) | Slot | SLOT#09 GRISWOLD 26C-11HZ (560'FSL & 1968'FEL, SEC.11) |
| Area | COLORADO | Well | GRISWOLD 26C-11HZ |
| Field | WELD COUNTY (KERR MCGEE) | Wellbore | GRISWOLD 26C-11HZ AWB <122-12950> |
| Facility | SEC.11-T1N-R66W | | |

| HOLE & CASING SECTIONS - Ref Wellbore: GRISWOLD 26C-11HZ AWB <122-12950> Ref Wellpath: GRISWOLD 26C-11HZ AWP | | | | | | | | | |
|--|---------------|-------------|---------------|----------------|--------------|----------------|----------------|--------------|--------------|
| String/Diameter | Start MD [ft] | End MD [ft] | Interval [ft] | Start TVD [ft] | End TVD [ft] | Start N/S [ft] | Start E/W [ft] | End N/S [ft] | End E/W [ft] |
| 13.5in Open Hole | 16.00 | 1775.00 | 1759.00 | 16.00 | 1746.01 | 0.00 | 0.00 | -176.57 | 209.25 |
| 9.625in Casing Surface | 16.00 | 1765.00 | 1749.00 | 16.00 | 1736.27 | 0.00 | 0.00 | -175.07 | 207.54 |
| 7.875in Open Hole | 1775.00 | 12950.00 | 11175.00 | 1746.01 | 7562.41 | -176.57 | 209.25 | 4656.16 | 1348.60 |

| WELLPATH COMPOSITION - Ref Wellbore: GRISWOLD 26C-11HZ AWB <122-12950> Ref Wellpath: GRISWOLD 26C-11HZ AWP | | | | |
|--|-------------|-------------------------------|--|-----------------------------------|
| Start MD [ft] | End MD [ft] | Positional Uncertainty Model | Log Name/Comment | Wellbore |
| 16.00 | 1730.00 | ISCWSA MWD, Rev. 2 (Standard) | CATHEDRAL MWD SURVEYS <122-1730> | GRISWOLD 26C-11HZ AWB <122-12950> |
| 1730.00 | 12894.00 | NaviTrak (MAGCORR,IFR) | BHI NAVITRAK MWD+IFR 7 7/8" <1862-12894> | GRISWOLD 26C-11HZ AWB <122-12950> |
| 12894.00 | 12950.00 | Blind Drilling (std) | Projection to bit | GRISWOLD 26C-11HZ AWB <122-12950> |

Actual Wellpath Report

GRISWOLD 26C-11HZ AWP

Page 6 of 6

| REFERENCE WELLPATH IDENTIFICATION | | | |
|-----------------------------------|---|----------|--|
| Operator | KERR-MCGEE OIL & GAS ONSHORE LP (LAMBERT STATE PLANE COORD) | Slot | SLOT#09 GRISWOLD 26C-11HZ (560'FSL & 1968'FEL, SEC.11) |
| Area | COLORADO | Well | GRISWOLD 26C-11HZ |
| Field | WELD COUNTY (KERR MCGEE) | Wellbore | GRISWOLD 26C-11HZ AWB <122-12950> |
| Facility | SEC.11-T1N-R66W | | |

| WELLPATH COMMENTS | | | | |
|-------------------|-----------------|-------------|----------|--------------------------------|
| MD [ft] | Inclination [°] | Azimuth [°] | TVD [ft] | Comment |
| 16.00 | 0.000 | 71.500 | 16.00 | TIE ON |
| 122.00 | 0.300 | 71.500 | 122.00 | BEGIN CATHEDRAL MWD SURVEYS |
| 1730.00 | 13.300 | 131.400 | 1702.20 | TIE ONTO CATHEDRAL MWD SURVEYS |
| 1862.00 | 12.840 | 131.240 | 1830.78 | BEGIN BHI MWD+IFR SURVEYS |
| 8238.00 | 90.400 | 359.200 | 7568.91 | TOP OF PRODUCTION |
| 12894.00 | 90.210 | 358.190 | 7562.61 | LAST BHI MWD+IFR SURVEY |
| 12950.00 | 90.210 | 358.190 | 7562.41 | PROJECTION TO BIT |