

KERR-MCGEE OIL & GAS ONSHORE LP (LAMBERT STATE PLANE COORD)

Location: COLORADO Slot: SLOT#11 VOLLMAR 4N-11HZ (1231'FNL & 1833'FWL, SEC.14)
 Field: WELD COUNTY (KERR MCGEE) Well: VOLLMAR 4N-11HZ
 Facility: SEC.14-T2N-R67W Wellbore: VOLLMAR 4N-11HZ PWB

Plot reference wellpath is VOLLMAR 4N-11HZ (REV-A.0) PWP

True vertical depths are referenced to XTREME 6 (16KB) (RKB)

Grid System: NAD83 / Lambert Colorado SP, Northern Zone (501), US feet

Measured depths are referenced to XTREME 6 (16KB) (RKB)

North Reference: True north

XTREME 6 (16KB) (RKB) to Mean Sea Level: 4961 feet

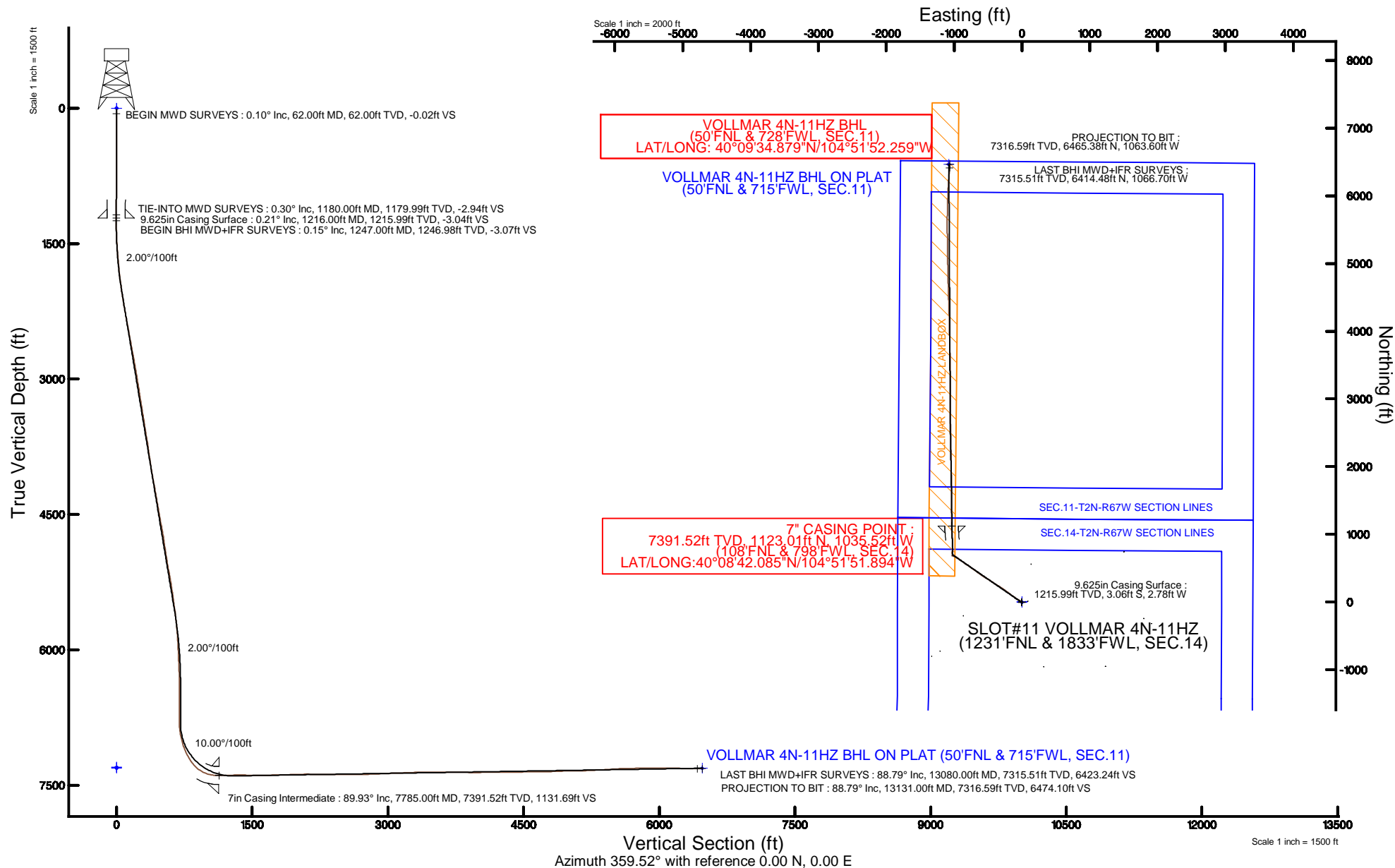
Scale: True distance

Mean Sea Level to Mud line (At Slot: SLOT#11 VOLLMAR 4N-11HZ (1231'FNL & 1833'FWL, SEC.14)): 0 feet

Depths are in feet

Coordinates are in feet referenced to Slot

Created by: amarcar on 11/Mar/2015



REFERENCE WELLPATH IDENTIFICATION

Operator	KERR-MCGEE OIL & GAS ONSHORE LP (LAMBERT STATE PLANE COORD)	Slot	SLOT#11 VOLLMAR 4N-11HZ (1231'FNL & 1833'FWL, SEC.14)
Area	COLORADO	Well	VOLLMAR 4N-11HZ
Field	WELD COUNTY (KERR MCGEE)	Wellbore	VOLLMAR 4N-11HZ AWB <13131>
Facility	SEC.14-T2N-R67W		

REPORT SETUP INFORMATION

Projection System	NAD83 / Lambert Colorado SP, Northern Zone (501), US feet	Software System	WellArchitect® 4.1.1
North Reference	True	User	Amarcar
Scale	0.999959	Report Generated	11/Mar/2015 at 10:42
Convergence at slot	0.41° East	Database/Source file	WellArchitectDB/VOLLMAR_4N-11HZ_AWB_13131_.xml

WELLPATH LOCATION

	Local coordinates		Grid coordinates		Geographic coordinates	
	North[ft]	East[ft]	Easting[US ft]	Northing[US ft]	Latitude	Longitude
Slot Location	3473.58	-1164.54	3178724.76	1295196.93	40°08'30.988"N	104°51'38.560"W
Facility Reference Pt			3179914.43	1291732.03	40°07'56.662"N	104°51'23.565"W
Field Reference Pt			3197771.84	1268891.29	40°04'09.600"N	104°47'36.000"W

WELLPATH DATUM

Calculation method	Minimum curvature	XTREME 6 (16'KB) (RKB) to Facility Vertical Datum	4961.00ft
Horizontal Reference Pt	Slot	XTREME 6 (16'KB) (RKB) to Mean Sea Level	4961.00ft
Vertical Reference Pt	XTREME 6 (16'KB) (RKB)	XTREME 6 (16'KB) (RKB) to Mud Line at Slot (SLOT#11 VOLLMAR 4N-11HZ (1231'FNL & 1833'FWL, SEC.14))	4961.00ft
MD Reference Pt	XTREME 6 (16'KB) (RKB)	Section Origin	N 0.00, E 0.00 ft
Field Vertical Reference	Mean Sea Level	Section Azimuth	359.52°

REFERENCE WELLPATH IDENTIFICATION

Operator	KERR-MCGEE OIL & GAS ONSHORE LP (LAMBERT STATE PLANE COORD)	Slot	SLOT#11 VOLLMAR 4N-11HZ (1231'FNL & 1833'FWL, SEC.14)
Area	COLORADO	Well	VOLLMAR 4N-11HZ
Field	WELD COUNTY (KERR MCGEE)	Wellbore	VOLLMAR 4N-11HZ AWB <13131>
Facility	SEC.14-T2N-R67W		

WELLPATH DATA (124 stations) † = interpolated/extrapolated station

MD [ft]	Inclination [°]	Azimuth [°]	TVD [ft]	Vert Sect [ft]	North [ft]	East [ft]	Latitude	Longitude	DLS [°/100ft]	Comments
0.00†	0.000	122.400	0.00	0.00	0.00	0.00	40°08'30.988"N	104°51'38.560"W	0.00	
16.00	0.000	122.400	16.00	0.00	0.00	0.00	40°08'30.988"N	104°51'38.560"W	0.00	
62.00	0.100	122.400	62.00	-0.02	-0.02	0.03	40°08'30.988"N	104°51'38.560"W	0.22	BEGIN MWD SURVEYS
172.00	0.200	189.000	172.00	-0.26	-0.26	0.08	40°08'30.985"N	104°51'38.559"W	0.17	
250.00	0.100	224.300	250.00	-0.45	-0.45	0.02	40°08'30.984"N	104°51'38.560"W	0.17	
331.00	0.200	345.600	331.00	-0.36	-0.36	-0.07	40°08'30.984"N	104°51'38.561"W	0.33	
411.00	0.100	10.300	411.00	-0.15	-0.16	-0.09	40°08'30.986"N	104°51'38.561"W	0.15	
491.00	0.300	272.600	491.00	-0.07	-0.08	-0.29	40°08'30.987"N	104°51'38.564"W	0.41	
571.00	0.200	278.400	571.00	-0.04	-0.05	-0.63	40°08'30.988"N	104°51'38.568"W	0.13	
651.00	0.200	212.900	651.00	-0.14	-0.14	-0.85	40°08'30.987"N	104°51'38.571"W	0.27	
731.00	0.200	241.200	731.00	-0.32	-0.33	-1.05	40°08'30.985"N	104°51'38.573"W	0.12	
811.00	0.400	206.400	811.00	-0.64	-0.65	-1.29	40°08'30.982"N	104°51'38.577"W	0.33	
891.00	0.500	214.100	890.99	-1.17	-1.19	-1.61	40°08'30.976"N	104°51'38.581"W	0.15	
971.00	0.500	194.700	970.99	-1.80	-1.81	-1.90	40°08'30.970"N	104°51'38.584"W	0.21	
1051.00	0.500	218.000	1050.99	-2.41	-2.42	-2.20	40°08'30.964"N	104°51'38.588"W	0.25	
1131.00	0.200	219.700	1130.99	-2.79	-2.81	-2.51	40°08'30.960"N	104°51'38.592"W	0.38	
1180.00	0.300	227.400	1179.99	-2.94	-2.96	-2.65	40°08'30.959"N	104°51'38.594"W	0.21	TIE-INTO MWD SURVEYS
1247.00	0.150	256.640	1246.98	-3.07	-3.10	-2.87	40°08'30.957"N	104°51'38.597"W	0.28	BEGIN BHI MWD+HFR SURVEYS
1339.00	1.880	311.630	1338.97	-2.09	-2.12	-4.11	40°08'30.967"N	104°51'38.613"W	1.95	
1430.00	3.720	302.120	1429.86	0.50	0.44	-7.73	40°08'30.992"N	104°51'38.660"W	2.08	
1521.00	6.030	306.270	1520.52	4.95	4.84	-14.08	40°08'31.036"N	104°51'38.741"W	2.57	
1612.00	7.650	302.640	1610.87	11.12	10.93	-23.04	40°08'31.096"N	104°51'38.857"W	1.84	
1703.00	9.020	305.070	1700.91	18.58	18.30	-33.98	40°08'31.169"N	104°51'38.998"W	1.55	
1794.00	10.930	303.260	1790.53	27.52	27.13	-47.03	40°08'31.256"N	104°51'39.166"W	2.13	
1885.00	12.510	301.950	1879.63	37.60	37.07	-62.61	40°08'31.354"N	104°51'39.366"W	1.76	
1975.00	13.350	304.620	1967.35	48.80	48.14	-79.43	40°08'31.464"N	104°51'39.583"W	1.15	
2067.00	14.540	307.320	2056.63	61.99	61.17	-97.36	40°08'31.593"N	104°51'39.814"W	1.47	
2157.00	15.970	305.120	2143.46	76.12	75.15	-116.47	40°08'31.731"N	104°51'40.060"W	1.71	
2248.00	17.070	304.640	2230.70	91.10	89.94	-137.70	40°08'31.877"N	104°51'40.333"W	1.22	
2338.00	15.650	305.270	2317.06	105.79	104.46	-158.48	40°08'32.020"N	104°51'40.601"W	1.59	
2429.00	18.180	307.450	2404.11	121.69	120.18	-179.77	40°08'32.176"N	104°51'40.875"W	2.87	
2512.00	16.050	305.260	2483.43	136.35	134.68	-199.42	40°08'32.319"N	104°51'41.128"W	2.68	
2597.00	17.680	307.460	2564.78	151.16	149.31	-219.27	40°08'32.464"N	104°51'41.383"W	2.06	
2682.00	16.050	307.920	2646.12	166.39	164.39	-238.78	40°08'32.612"N	104°51'41.635"W	1.92	
2767.00	18.320	304.730	2727.32	181.40	179.22	-259.03	40°08'32.759"N	104°51'41.895"W	2.89	
2853.00	17.450	305.600	2809.16	196.78	194.43	-280.63	40°08'32.909"N	104°51'42.173"W	1.06	
2941.00	15.590	304.310	2893.53	211.30	208.78	-301.12	40°08'33.051"N	104°51'42.437"W	2.15	
3028.00	16.420	302.150	2977.16	224.61	221.91	-321.19	40°08'33.181"N	104°51'42.696"W	1.17	
3117.00	18.260	301.070	3062.11	238.69	235.80	-343.79	40°08'33.318"N	104°51'42.987"W	2.10	
3206.00	15.980	299.520	3147.16	252.11	249.03	-366.39	40°08'33.449"N	104°51'43.278"W	2.61	
3295.00	15.890	303.120	3232.74	264.98	261.73	-387.26	40°08'33.574"N	104°51'43.547"W	1.11	
3384.00	15.950	304.820	3318.33	278.79	275.37	-407.50	40°08'33.709"N	104°51'43.807"W	0.53	
3473.00	16.850	304.640	3403.71	293.28	289.68	-428.15	40°08'33.851"N	104°51'44.073"W	1.01	
3559.00	14.080	302.590	3486.58	306.16	302.40	-447.23	40°08'33.976"N	104°51'44.319"W	3.28	
3648.00	16.940	304.230	3572.33	319.45	315.53	-467.07	40°08'34.106"N	104°51'44.574"W	3.25	

REFERENCE WELLPATH IDENTIFICATION

Operator	KERR-MCGEE OIL & GAS ONSHORE LP (LAMBERT STATE PLANE COORD)	Slot	SLOT#11 VOLLMAR 4N-11HZ (1231'FNL & 1833'FWL, SEC.14)
Area	COLORADO	Well	VOLLMAR 4N-11HZ
Field	WELD COUNTY (KERR MCGEE)	Wellbore	VOLLMAR 4N-11HZ AWP <13131>
Facility	SEC.14-T2N-R67W		

WELLPATH DATA (124 stations) † = interpolated/extrapolated station

MD [ft]	Inclination [°]	Azimuth [°]	TVD [ft]	Vert Sect [ft]	North [ft]	East [ft]	Latitude	Longitude	DLS [°/100ft]	Comments
3737.00	17.360	302.620	3657.38	334.09	329.98	-488.98	40°08'34.249"N	104°51'44.856"W	0.71	
3911.00	14.290	299.600	3824.77	359.04	354.59	-529.52	40°08'34.492"N	104°51'45.378"W	1.83	
4089.00	16.230	303.570	3996.49	383.98	379.20	-569.35	40°08'34.735"N	104°51'45.891"W	1.24	
4267.00	17.470	306.900	4166.84	414.13	409.00	-611.45	40°08'35.030"N	104°51'46.433"W	0.88	
4445.00	15.860	305.890	4337.36	444.78	439.30	-652.52	40°08'35.329"N	104°51'46.962"W	0.92	
4621.00	16.660	306.030	4506.32	474.05	468.24	-692.41	40°08'35.615"N	104°51'47.476"W	0.46	
4793.00	17.640	304.500	4670.67	503.66	497.50	-733.83	40°08'35.904"N	104°51'48.009"W	0.63	
4969.00	13.900	303.590	4840.02	530.81	524.31	-773.43	40°08'36.169"N	104°51'48.519"W	2.13	
5147.00	16.810	303.670	5011.65	557.24	550.42	-812.67	40°08'36.427"N	104°51'49.024"W	1.63	
5325.00	16.680	307.390	5182.10	587.37	580.20	-854.39	40°08'36.721"N	104°51'49.562"W	0.61	
5501.00	14.000	305.050	5351.82	615.26	607.77	-891.89	40°08'36.994"N	104°51'50.045"W	1.56	
5677.00	13.070	305.860	5522.93	639.42	631.65	-925.45	40°08'37.230"N	104°51'50.477"W	0.54	
5851.00	10.560	302.420	5693.23	659.75	651.73	-954.86	40°08'37.428"N	104°51'50.855"W	1.50	
6023.00	8.630	294.160	5862.83	673.69	665.46	-979.94	40°08'37.564"N	104°51'51.178"W	1.38	
6108.00	8.000	295.260	5946.93	678.92	670.60	-991.11	40°08'37.615"N	104°51'51.322"W	0.76	
6194.00	6.100	288.490	6032.28	683.00	674.60	-1000.85	40°08'37.654"N	104°51'51.448"W	2.41	
6283.00	6.320	297.950	6120.76	686.87	678.40	-1009.67	40°08'37.692"N	104°51'51.561"W	1.17	
6367.00	3.710	306.200	6204.43	690.70	682.17	-1015.95	40°08'37.729"N	104°51'51.642"W	3.22	
6453.00	2.650	293.270	6290.30	693.16	684.60	-1020.02	40°08'37.753"N	104°51'51.694"W	1.48	
6537.00	1.270	257.800	6374.25	693.76	685.17	-1022.71	40°08'37.759"N	104°51'51.729"W	2.11	
6622.00	1.620	242.990	6459.22	693.03	684.42	-1024.70	40°08'37.751"N	104°51'51.755"W	0.60	
6708.00	0.700	274.710	6545.21	692.53	683.92	-1026.31	40°08'37.746"N	104°51'51.775"W	1.27	
6793.00	0.280	216.160	6630.20	692.41	683.79	-1026.95	40°08'37.745"N	104°51'51.784"W	0.71	
6878.00	0.380	301.040	6715.20	692.39	683.77	-1027.31	40°08'37.745"N	104°51'51.788"W	0.53	
6963.00	0.750	359.460	6800.20	693.10	684.47	-1027.56	40°08'37.752"N	104°51'51.792"W	0.75	
7006.00	3.540	2.560	6843.16	694.70	686.08	-1027.50	40°08'37.768"N	104°51'51.791"W	6.49	
7048.00	6.520	5.980	6885.00	698.37	689.74	-1027.20	40°08'37.804"N	104°51'51.787"W	7.13	
7091.00	9.820	3.550	6927.55	704.46	695.83	-1026.71	40°08'37.864"N	104°51'51.781"W	7.71	
7133.00	12.440	357.720	6968.76	712.55	703.93	-1026.67	40°08'37.944"N	104°51'51.780"W	6.78	
7176.00	15.750	357.140	7010.46	723.01	714.39	-1027.15	40°08'38.047"N	104°51'51.786"W	7.70	
7219.00	17.720	0.090	7051.64	735.39	726.76	-1027.43	40°08'38.170"N	104°51'51.790"W	4.99	
7260.00	20.980	3.010	7090.32	748.96	740.34	-1027.03	40°08'38.304"N	104°51'51.785"W	8.29	
7303.00	24.900	3.220	7129.91	765.68	757.07	-1026.12	40°08'38.469"N	104°51'51.773"W	9.12	
7345.00	27.900	6.140	7167.53	784.27	775.67	-1024.57	40°08'38.653"N	104°51'51.753"W	7.78	
7388.00	31.100	4.390	7204.95	805.34	796.75	-1022.65	40°08'38.861"N	104°51'51.728"W	7.71	
7431.00	35.020	2.890	7240.98	828.73	820.16	-1021.17	40°08'39.093"N	104°51'51.709"W	9.31	
7473.00	39.920	359.900	7274.31	854.25	845.69	-1020.59	40°08'39.345"N	104°51'51.702"W	12.44	
7516.00	48.140	357.080	7305.20	884.10	875.53	-1021.43	40°08'39.640"N	104°51'51.713"W	19.65	
7559.00	56.020	355.140	7331.61	917.93	909.34	-1023.76	40°08'39.974"N	104°51'51.743"W	18.67	
7601.00	63.150	354.990	7352.86	954.02	945.41	-1026.88	40°08'40.330"N	104°51'51.783"W	16.98	
7644.00	69.330	355.540	7370.17	993.25	984.61	-1030.12	40°08'40.718"N	104°51'51.825"W	14.42	
7686.00	77.270	356.650	7382.23	1033.37	1024.71	-1032.85	40°08'41.114"N	104°51'51.860"W	19.07	
7729.00	84.400	358.080	7389.08	1075.76	1067.09	-1034.79	40°08'41.533"N	104°51'51.885"W	16.90	
7754.00	87.530	359.330	7390.84	1100.70	1092.02	-1035.36	40°08'41.779"N	104°51'51.892"W	13.48	
7785.00†	89.932	0.077	7391.52	1131.69	1123.01	-1035.52	40°08'42.085"N	104°51'51.894"W	8.12	7" CASING POINT

REFERENCE WELLPATH IDENTIFICATION

Operator	KERR-MCGEE OIL & GAS ONSHORE LP (LAMBERT STATE PLANE COORD)	Slot	SLOT#11 VOLLMAR 4N-11HZ (1231'FNL & 1833'FWL, SEC.14)
Area	COLORADO	Well	VOLLMAR 4N-11HZ
Field	WELD COUNTY (KERR MCGEE)	Wellbore	VOLLMAR 4N-11HZ AWB <13131>
Facility	SEC.14-T2N-R67W		

WELLPATH DATA (124 stations)

MD [ft]	Inclination [°]	Azimuth [°]	TVD [ft]	Vert Sect [ft]	North [ft]	East [ft]	Latitude	Longitude	DLS [°/100ft]	Comments
7810.00	91.870	0.680	7391.13	1156.68	1148.00	-1035.35	40°08'42.332"N	104°51'51.892"W	8.12	
7920.00	91.290	0.400	7388.10	1266.62	1257.95	-1034.31	40°08'43.419"N	104°51'51.879"W	0.59	
8091.00	88.920	359.540	7387.78	1437.60	1428.94	-1034.40	40°08'45.109"N	104°51'51.880"W	1.47	
8261.00	90.400	358.890	7388.79	1607.59	1598.92	-1036.61	40°08'46.788"N	104°51'51.909"W	0.93	
8432.00	91.080	359.710	7386.58	1778.57	1769.89	-1038.58	40°08'48.478"N	104°51'51.934"W	0.59	
8602.00	92.630	358.180	7381.08	1948.46	1939.76	-1041.71	40°08'50.157"N	104°51'51.974"W	1.28	
8773.00	89.780	359.450	7377.49	2119.39	2110.67	-1045.25	40°08'51.846"N	104°51'52.020"W	1.82	
8943.00	88.610	358.890	7379.87	2289.37	2280.63	-1047.71	40°08'53.525"N	104°51'52.052"W	0.76	
9113.00	89.810	359.280	7382.22	2459.34	2450.59	-1050.42	40°08'55.205"N	104°51'52.087"W	0.74	
9283.00	90.640	358.550	7381.55	2629.33	2620.55	-1053.64	40°08'56.884"N	104°51'52.128"W	0.65	
9454.00	92.180	0.080	7377.34	2800.27	2791.48	-1055.69	40°08'58.573"N	104°51'52.155"W	1.27	
9624.00	92.770	0.170	7370.00	2970.10	2961.32	-1059.32	40°09'00.252"N	104°51'52.150"W	0.35	
9794.00	91.720	359.690	7363.34	3139.96	3131.18	-1055.52	40°09'01.930"N	104°51'52.153"W	0.68	
9964.00	92.530	0.500	7357.04	3309.83	3301.06	-1055.24	40°09'03.609"N	104°51'52.149"W	0.67	
10135.00	90.060	358.900	7353.17	3480.77	3472.00	-1056.14	40°09'05.298"N	104°51'52.161"W	1.72	
10305.00	89.160	358.750	7354.33	3650.75	3641.96	-1059.62	40°09'06.978"N	104°51'52.206"W	0.54	
10477.00	89.200	358.670	7356.79	3822.72	3813.90	-1063.50	40°09'08.677"N	104°51'52.256"W	0.05	
10648.00	90.150	358.070	7357.76	3993.68	3984.82	-1068.36	40°09'10.366"N	104°51'52.319"W	0.66	
10818.00	91.790	359.310	7354.88	4163.63	4154.74	-1072.25	40°09'12.045"N	104°51'52.369"W	1.21	
10989.00	89.630	358.100	7352.77	4334.58	4325.67	-1076.11	40°09'13.734"N	104°51'52.419"W	1.45	
11160.00	90.550	358.590	7352.50	4505.54	4496.60	-1081.05	40°09'15.423"N	104°51'52.482"W	0.61	
11330.00	90.580	358.290	7350.82	4675.50	4666.53	-1085.68	40°09'17.103"N	104°51'52.542"W	0.18	
11500.00	92.860	358.760	7345.72	4845.39	4836.38	-1090.05	40°09'18.781"N	104°51'52.599"W	1.37	
11670.00	90.030	358.460	7341.43	5015.30	5006.26	-1094.17	40°09'20.460"N	104°51'52.652"W	1.67	
11840.00	92.530	359.710	7337.63	5185.23	5176.18	-1096.89	40°09'22.139"N	104°51'52.687"W	1.64	
12010.00	93.240	359.190	7329.08	5355.02	5345.96	-1098.52	40°09'23.817"N	104°51'52.708"W	0.52	
12180.00	93.480	358.760	7319.11	5524.72	5515.64	-1101.55	40°09'25.494"N	104°51'52.747"W	0.29	
12351.00	90.710	1.780	7312.86	5695.55	5686.48	-1100.74	40°09'27.182"N	104°51'52.737"W	2.40	
12522.00	90.430	1.140	7311.16	5866.44	5857.42	-1096.39	40°09'28.871"N	104°51'52.681"W	0.41	
12693.00	89.810	2.090	7310.80	6037.33	6028.35	-1091.57	40°09'30.560"N	104°51'52.619"W	0.66	
12863.00	89.290	3.820	7312.14	6207.01	6198.11	-1082.80	40°09'32.238"N	104°51'52.506"W	1.06	
13036.00	89.030	4.760	7314.67	6379.39	6370.60	-1069.87	40°09'33.943"N	104°51'52.339"W	0.56	
13080.00	88.790	3.490	7315.51	6423.24	6414.48	-1066.70	40°09'34.376"N	104°51'52.299"W	2.94	LAST BHI MWD+IFR SURVEYS
13131.00	88.790	3.490	7316.59	6474.10	6465.38	-1063.60	40°09'34.879"N	104°51'52.259"W	0.00	PROJECTION TO BIT

HOLE & CASING SECTIONS - Ref Wellbore: VOLLMAR 4N-11HZ AWB <13131> Ref Wellpath: VOLLMAR 4N-11HZ AWP

String/Diameter	Start MD [ft]	End MD [ft]	Interval [ft]	Start TVD [ft]	End TVD [ft]	Start N/S [ft]	Start E/W [ft]	End N/S [ft]	End E/W [ft]
13.5in Open Hole	16.00	1226.00	1210.00	16.00	1225.98	0.00	0.00	-3.08	-2.81
9.625in Casing Surface	16.00	1216.00	1200.00	16.00	1215.99	0.00	0.00	-3.06	-2.78
8.75in Open Hole	1226.00	7795.00	6569.00	1225.98	7391.47	-3.08	-2.81	1133.01	-1035.48
7in Casing Intermediate	16.00	7785.00	7769.00	16.00	7391.52	0.00	0.00	1123.01	-1035.52
6.125in Open Hole	7795.00	13131.00	5336.00	7391.47	7316.59	1133.01	-1035.48	6465.38	-1063.60

REFERENCE WELLPATH IDENTIFICATION

Operator	KERR-MCGEE OIL & GAS ONSHORE LP (LAMBERT STATE PLANE COORD)	Slot	SLOT#11 VOLLMAR 4N-11HZ (1231'FNL & 1833'FWL, SEC.14)
Area	COLORADO	Well	VOLLMAR 4N-11HZ
Field	WELD COUNTY (KERR MCGEE)	Wellbore	VOLLMAR 4N-11HZ AWB <13131>
Facility	SEC.14-T2N-R67W		

TARGETS

Name	TVD [ft]	North [ft]	East [ft]	Grid East [US ft]	Grid North [US ft]	Latitude	Longitude	Shape
SEC.11-T2N-R67W SECTION LINES	0.00	0.00	0.00	3178724.76	1295196.93	40°08'30.988"N	104°51'38.560"W	polygon
SEC.14-T2N-R67W SECTION LINES	0.00	0.00	0.00	3178724.76	1295196.93	40°08'30.988"N	104°51'38.560"W	polygon
SEC.11-T2N-R67W HARDLINES (460' SETBACKS)	7301.00	0.00	0.00	3178724.76	1295196.93	40°08'30.988"N	104°51'38.560"W	polygon
SEC.14-T2N-R67W HARDLINES (460' SETBACKS)	7301.00	0.00	0.00	3178724.76	1295196.93	40°08'30.988"N	104°51'38.560"W	polygon
VOLLMAR 4N-11HZ BHL ON PLAT (50'FNL & 715'FWL, SEC.11)	7311.00	6465.47	-1076.66	3177601.57	1301654.19	40°09'34.880"N	104°51'52.427"W	point
VOLLMAR 4N-11HZ LANDBOX	7311.00	0.00	0.00	3178724.76	1295196.93	40°08'30.988"N	104°51'38.560"W	polygon

WELLPATH COMPOSITION - Ref Wellbore: VOLLMAR 4N-11HZ AWB <13131> Ref Wellpath: VOLLMAR 4N-11HZ AWP

Start MD [ft]	End MD [ft]	Positional Uncertainty Model	Log Name/Comment	Wellbore
16.00	1180.00	ISCWSA MWD, Rev. 2 (Standard)	CATHEDRAL MWD SURVEYS 13.5" <62-1180>	VOLLMAR 4N-11HZ AWB <13131>
1180.00	7810.00	NaviTrak (MAGCORR,IFR)	BHI MWD+IFR SURVEYS 8.75" <1247-7810>	VOLLMAR 4N-11HZ AWB <13131>
7810.00	13080.00	NaviTrak (MAGCORR,IFR)	BHI MWD+IFR SURVEYS 6.125" <7920-13080>	VOLLMAR 4N-11HZ AWB <13131>
13080.00	13131.00	Blind Drilling (std)	Projection to bit	VOLLMAR 4N-11HZ AWB <13131>

REFERENCE WELLPATH IDENTIFICATION			
Operator	KERR-MCGEE OIL & GAS ONSHORE LP (LAMBERT STATE PLANE COORD)	Slot	SLOT#11 VOLLMAR 4N-11HZ (1231'FNL & 1833'FWL, SEC.14)
Area	COLORADO	Well	VOLLMAR 4N-11HZ
Field	WELD COUNTY (KERR MCGEE)	Wellbore	VOLLMAR 4N-11HZ AWB <13131>
Facility	SEC.14-T2N-R67W		

WELLPATH COMMENTS				
MD [ft]	Inclination [°]	Azimuth [°]	TVD [ft]	Comment
62.00	0.100	122.400	62.00	BEGIN MWD SURVEYS
1180.00	0.300	227.400	1179.99	TIE-INTO MWD SURVEYS
1247.00	0.150	256.640	1246.98	BEGIN BHI MWD+IFR SURVEYS
7785.00	89.932	0.077	7391.52	7" CASING POINT
13080.00	88.790	3.490	7315.51	LAST BHI MWD+IFR SURVEYS
13131.00	88.790	3.490	7316.59	PROJECTION TO BIT