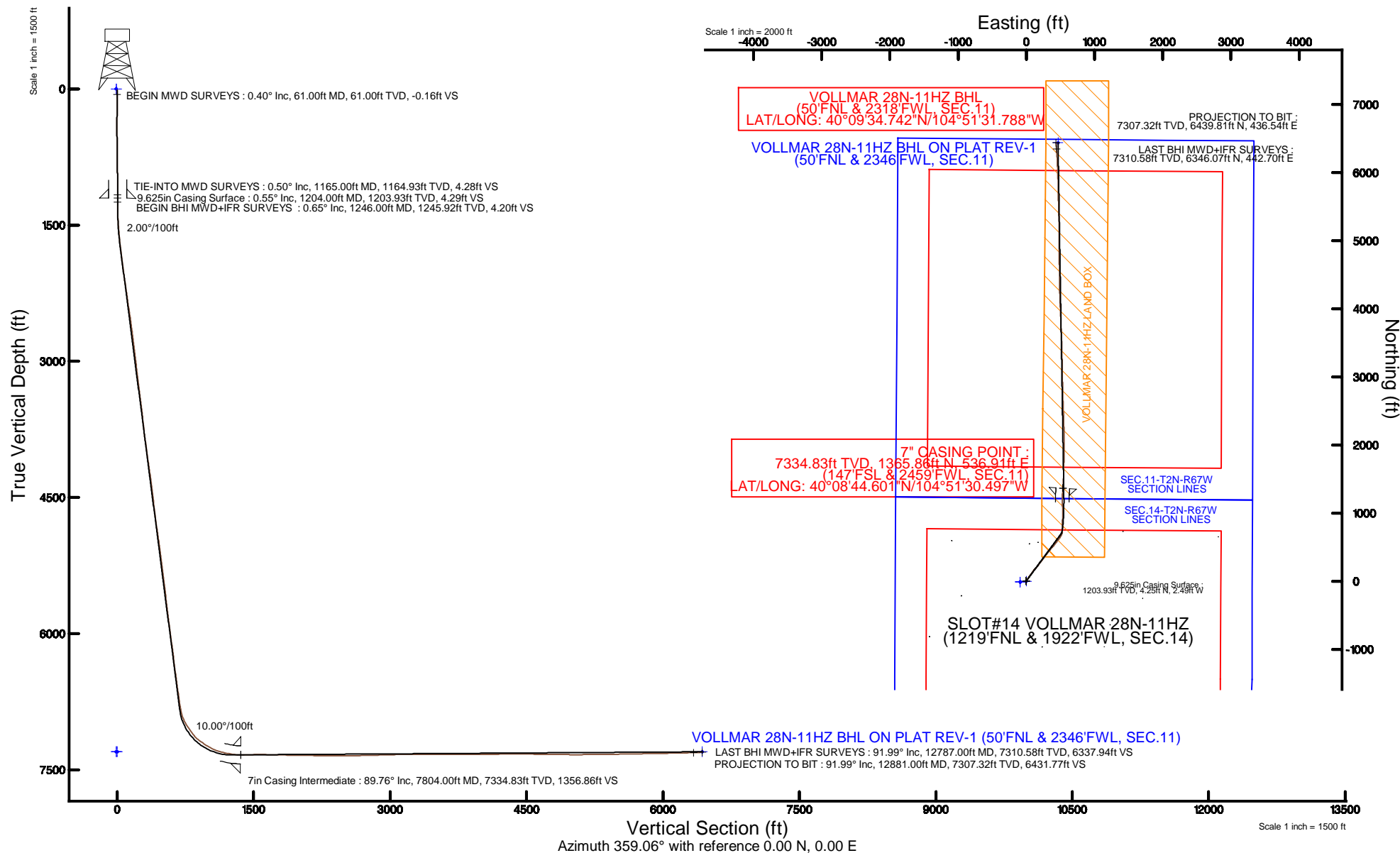


Location:	COLORADO	Slot:	SLOT#14 VOLLMAR 28N-11HZ (1219'FNL & 1922'FWL, SEC.14)
Field:	WELD COUNTY (KERR MCGEE)	Well:	VOLLMAR 28N-11HZ
Facility:	SEC.14-T2N-R67W	Wellbore:	VOLLMAR 28N-11HZ PWB

Plot reference wellpath is VOLLMAR 28N-11HZ (REV-A.0) PWP	
True vertical depths are referenced to XTREME 6 (16KB) (RKB)	Grid System: NAD83 / Lambert Colorado SP, Northern Zone (501), US feet
Measured depths are referenced to XTREME 6 (16KB) (RKB)	North Reference: True north
XTREME 6 (16KB) (RKB) to Mean Sea Level: 4961 feet	Scale: True distance
Mean Sea Level to Mud line (At Slot: SLOT#14 VOLLMAR 28N-11HZ (1219FNL & 1922FWL, SEC.14)): 0 feet	Depths are in feet
Coordinates are in feet referenced to Slot	Created by: amarcar on 04/Mar/2015



### REFERENCE WELLPATH IDENTIFICATION

Operator	KERR-MCGEE OIL & GAS ONSHORE LP (LAMBERT STATE PLANE COORD)	Slot	SLOT#14 VOLLMAR 28N-11HZ (1219'FNL & 1922'FWL, SEC.14)
Area	COLORADO	Well	VOLLMAR 28N-11HZ
Field	WELD COUNTY (KERR MCGEE)	Wellbore	VOLLMAR 28N-11HZ AWB <12881>
Facility	SEC.14-T2N-R67W		

### REPORT SETUP INFORMATION

Projection System	NAD83 / Lambert Colorado SP, Northern Zone (501), US feet	Software System	WellArchitect® 4.1.1
North Reference	True	User	Amarcar
Scale	0.999959	Report Generated	04/Mar/2015 at 14:00
Convergence at slot	0.41° East	Database/Source file	WellArchitectDB/VOLLMAR_28N-11HZ_AWB_12881_.xml

### WELLPATH LOCATION

	Local coordinates		Grid coordinates		Geographic coordinates	
	North[ft]	East[ft]	Easting[US ft]	Northing[US ft]	Latitude	Longitude
Slot Location	3485.22	-1075.30	3178813.91	1295209.21	40°08'31.103"N	104°51'37.411"W
Facility Reference Pt			3179914.43	1291732.03	40°07'56.662"N	104°51'23.565"W
Field Reference Pt			3197771.84	1268891.29	40°04'09.600"N	104°47'36.000"W

### WELLPATH DATUM

Calculation method	Minimum curvature	XTREME 6 (16'KB) (RKB) to Facility Vertical Datum	4961.00ft
Horizontal Reference Pt	Slot	XTREME 6 (16'KB) (RKB) to Mean Sea Level	4961.00ft
Vertical Reference Pt	XTREME 6 (16'KB) (RKB)	XTREME 6 (16'KB) (RKB) to Mud Line at Slot (SLOT#14 VOLLMAR 28N-11HZ (1219'FNL & 1922'FWL, SEC.14))	4961.00ft
MD Reference Pt	XTREME 6 (16'KB) (RKB)	Section Origin	N 0.00, E 0.00 ft
Field Vertical Reference	Mean Sea Level	Section Azimuth	359.06°

### REFERENCE WELLPATH IDENTIFICATION

Operator	KERR-MCGEE OIL & GAS ONSHORE LP (LAMBERT STATE PLANE COORD)	Slot	SLOT#14 VOLLMAR 28N-11HZ (1219'FNL & 1922'FWL, SEC.14)
Area	COLORADO	Well	VOLLMAR 28N-11HZ
Field	WELD COUNTY (KERR MCGEE)	Wellbore	VOLLMAR 28N-11HZ AWB <12881>
Facility	SEC.14-T2N-R67W		

### WELLPATH DATA (130 stations) † = interpolated/extrapolated station

MD [ft]	Inclination [°]	Azimuth [°]	TVD [ft]	Vert Sect [ft]	North [ft]	East [ft]	Latitude	Longitude	DLS [°/100ft]	Comments
0.00†	0.000	179.400	0.00	0.00	0.00	0.00	40°08'31.103"N	104°51'37.411"W	0.00	
16.00	0.000	179.400	16.00	0.00	0.00	0.00	40°08'31.103"N	104°51'37.411"W	0.00	
61.00	0.400	179.400	61.00	-0.16	-0.16	0.00	40°08'31.101"N	104°51'37.411"W	0.89	BEGIN MWD SURVEYS
171.00	0.500	213.900	171.00	-0.93	-0.94	-0.26	40°08'31.094"N	104°51'37.414"W	0.26	
249.00	0.500	181.900	248.99	-1.55	-1.56	-0.46	40°08'31.088"N	104°51'37.417"W	0.35	
329.00	0.800	176.800	328.99	-2.46	-2.47	-0.44	40°08'31.079"N	104°51'37.417"W	0.38	
409.00	0.400	299.600	408.99	-2.88	-2.89	-0.66	40°08'31.074"N	104°51'37.419"W	1.34	
489.00	0.600	330.100	488.98	-2.37	-2.39	-1.11	40°08'31.079"N	104°51'37.425"W	0.41	
569.00	0.900	338.600	568.98	-1.41	-1.44	-1.54	40°08'31.089"N	104°51'37.431"W	0.40	
649.00	0.700	330.200	648.97	-0.40	-0.43	-2.02	40°08'31.099"N	104°51'37.437"W	0.29	
729.00	0.800	311.800	728.96	0.41	0.37	-2.68	40°08'31.107"N	104°51'37.445"W	0.32	
809.00	0.800	336.100	808.95	1.30	1.25	-3.32	40°08'31.115"N	104°51'37.454"W	0.42	
889.00	0.800	348.700	888.95	2.37	2.31	-3.65	40°08'31.126"N	104°51'37.458"W	0.22	
969.00	1.000	347.900	968.94	3.60	3.54	-3.91	40°08'31.138"N	104°51'37.461"W	0.25	
1049.00	0.400	97.900	1048.93	4.24	4.18	-3.78	40°08'31.144"N	104°51'37.460"W	1.50	
1129.00	0.500	84.100	1128.93	4.23	4.18	-3.16	40°08'31.144"N	104°51'37.452"W	0.18	
1165.00	0.500	77.400	1164.93	4.28	4.23	-2.85	40°08'31.145"N	104°51'37.448"W	0.16	TIE-INTO MWD SURVEYS
1246.00	0.650	107.540	1245.92	4.20	4.17	-2.06	40°08'31.144"N	104°51'37.438"W	0.41	BEGIN BHI MWD+IFR SURVEYS
1338.00	1.980	47.830	1337.90	5.08	5.08	-0.39	40°08'31.153"N	104°51'37.416"W	1.90	
1430.00	3.590	40.860	1429.79	8.28	8.32	2.67	40°08'31.185"N	104°51'37.377"W	1.79	
1520.00	5.040	34.130	1519.53	13.62	13.73	6.74	40°08'31.239"N	104°51'37.324"W	1.70	
1611.00	6.550	33.860	1610.06	21.15	21.35	11.87	40°08'31.314"N	104°51'37.258"W	1.66	
1702.00	7.940	37.680	1700.34	30.32	30.63	18.61	40°08'31.406"N	104°51'37.171"W	1.62	
1793.00	8.950	35.800	1790.35	40.91	41.35	26.59	40°08'31.512"N	104°51'37.069"W	1.15	
1884.00	9.520	35.040	1880.17	52.67	53.25	35.05	40°08'31.629"N	104°51'36.960"W	0.64	
1974.00	8.370	27.620	1969.08	64.44	65.15	42.36	40°08'31.747"N	104°51'36.866"W	1.81	
2066.00	8.680	38.650	2060.07	75.68	76.50	49.80	40°08'31.859"N	104°51'36.770"W	1.81	
2156.00	11.560	38.000	2148.66	87.93	88.92	59.60	40°08'31.982"N	104°51'36.644"W	3.20	
2247.00	9.940	33.250	2238.06	101.52	102.67	69.52	40°08'32.118"N	104°51'36.516"W	2.03	
2337.00	10.470	37.770	2326.64	114.32	115.63	78.78	40°08'32.246"N	104°51'36.397"W	1.07	
2428.00	9.850	31.910	2416.21	127.31	128.77	87.96	40°08'32.376"N	104°51'36.278"W	1.32	
2513.00	10.530	33.620	2499.87	139.82	141.41	96.11	40°08'32.500"N	104°51'36.173"W	0.88	
2598.00	9.930	31.640	2583.52	152.39	154.12	104.25	40°08'32.626"N	104°51'36.069"W	0.82	
2683.00	9.470	44.330	2667.31	163.49	165.36	112.98	40°08'32.737"N	104°51'35.956"W	2.57	
2769.00	8.970	44.450	2752.20	173.17	175.21	122.62	40°08'32.834"N	104°51'35.832"W	0.58	
2854.00	10.460	43.310	2835.98	183.36	185.56	132.56	40°08'32.937"N	104°51'35.704"W	1.77	
2939.00	9.670	41.490	2919.67	194.15	196.52	142.58	40°08'33.045"N	104°51'35.575"W	1.00	
3024.00	9.220	41.790	3003.52	204.42	206.94	151.85	40°08'33.148"N	104°51'35.456"W	0.53	
3109.00	8.330	41.280	3087.52	213.98	216.65	160.45	40°08'33.244"N	104°51'35.345"W	1.05	
3194.00	9.140	37.940	3171.54	223.80	226.60	168.66	40°08'33.342"N	104°51'35.239"W	1.12	
3280.00	8.160	37.140	3256.56	233.92	236.85	176.54	40°08'33.444"N	104°51'35.138"W	1.15	
3365.00	9.510	32.110	3340.55	244.56	247.61	183.92	40°08'33.550"N	104°51'35.043"W	1.83	
3450.00	7.850	31.080	3424.57	255.36	258.53	190.65	40°08'33.658"N	104°51'34.956"W	1.96	
3535.00	9.630	39.430	3508.58	265.70	268.99	198.16	40°08'33.761"N	104°51'34.859"W	2.57	
3620.00	8.090	35.670	3592.57	275.92	279.34	206.17	40°08'33.863"N	104°51'34.756"W	1.93	

### REFERENCE WELLPATH IDENTIFICATION

Operator	KERR-MCGEE OIL & GAS ONSHORE LP (LAMBERT STATE PLANE COORD)	Slot	SLOT#14 VOLLMAR 28N-11HZ (1219'FNL & 1922'FWL, SEC.14)
Area	COLORADO	Well	VOLLMAR 28N-11HZ
Field	WELD COUNTY (KERR MCGEE)	Wellbore	VOLLMAR 28N-11HZ AWB <12881>
Facility	SEC.14-T2N-R67W		

### WELLPATH DATA (130 stations)

MD [ft]	Inclination [°]	Azimuth [°]	TVD [ft]	Vert Sect [ft]	North [ft]	East [ft]	Latitude	Longitude	DLS [°/100ft]	Comments
3705.00	9.270	43.570	3676.60	285.60	289.16	214.37	40°08'33.961"N	104°51'34.651"W	1.97	
3789.00	7.520	39.050	3759.69	294.64	298.34	222.50	40°08'34.051"N	104°51'34.546"W	2.22	
3875.00	8.740	32.360	3844.83	304.41	308.23	229.54	40°08'34.149"N	104°51'34.455"W	1.79	
3960.00	10.250	37.010	3928.66	315.78	319.72	237.55	40°08'34.262"N	104°51'34.352"W	1.99	
4045.00	8.840	36.720	4012.49	326.91	331.00	246.01	40°08'34.374"N	104°51'34.243"W	1.66	
4130.00	11.330	38.150	4096.17	338.56	342.80	255.07	40°08'34.491"N	104°51'34.127"W	2.94	
4215.00	10.580	35.750	4179.62	351.30	355.70	264.79	40°08'34.618"N	104°51'34.001"W	1.03	
4300.00	8.870	32.580	4263.39	363.02	367.55	272.88	40°08'34.735"N	104°51'33.897"W	2.11	
4386.00	10.160	38.730	4348.21	374.39	379.06	281.20	40°08'34.849"N	104°51'33.790"W	1.91	
4471.00	9.140	37.700	4432.01	385.43	390.25	290.01	40°08'34.959"N	104°51'33.677"W	1.22	
4556.00	8.090	37.700	4516.05	395.38	400.32	297.80	40°08'35.059"N	104°51'33.576"W	1.24	
4641.00	9.140	38.880	4600.09	405.24	410.31	305.70	40°08'35.158"N	104°51'33.475"W	1.25	
4726.00	8.480	39.360	4684.08	415.20	420.41	313.91	40°08'35.258"N	104°51'33.369"W	0.78	
4812.00	10.440	38.210	4768.91	426.08	431.44	322.75	40°08'35.366"N	104°51'33.255"W	2.29	
4897.00	9.720	35.540	4852.60	437.82	443.33	331.68	40°08'35.484"N	104°51'33.140"W	1.01	
4982.00	11.730	43.690	4936.11	449.74	455.42	341.83	40°08'35.603"N	104°51'33.009"W	2.96	
5067.00	11.060	41.370	5019.44	461.92	467.78	353.18	40°08'35.726"N	104°51'32.863"W	0.95	
5152.00	10.560	40.870	5102.93	473.75	479.79	363.67	40°08'35.844"N	104°51'32.728"W	0.60	
5322.00	8.430	42.860	5270.59	494.36	500.71	382.34	40°08'36.051"N	104°51'32.488"W	1.27	
5492.00	9.790	39.420	5438.44	514.37	521.01	399.99	40°08'36.252"N	104°51'32.260"W	0.86	
5663.00	8.630	37.000	5607.24	535.57	542.49	416.95	40°08'36.464"N	104°51'32.042"W	0.72	
5834.00	8.390	34.250	5776.35	555.88	563.04	431.69	40°08'36.667"N	104°51'31.852"W	0.28	
6006.00	8.960	40.100	5946.39	576.24	583.66	447.38	40°08'36.871"N	104°51'31.650"W	0.61	
6179.00	11.320	38.210	6116.68	599.57	607.31	466.56	40°08'37.104"N	104°51'31.403"W	1.38	
6349.00	7.790	40.140	6284.29	621.20	629.24	484.32	40°08'37.321"N	104°51'31.175"W	2.08	
6434.00	8.650	34.010	6368.42	630.78	638.94	491.60	40°08'37.417"N	104°51'31.081"W	1.44	
6518.00	10.180	28.310	6451.29	642.44	650.71	498.66	40°08'37.533"N	104°51'30.990"W	2.13	
6603.00	8.510	32.240	6535.16	654.25	662.65	505.58	40°08'37.651"N	104°51'30.901"W	2.10	
6688.00	8.720	22.500	6619.20	665.43	673.92	511.40	40°08'37.763"N	104°51'30.826"W	1.73	
6773.00	9.320	26.800	6703.15	677.43	686.02	516.97	40°08'37.882"N	104°51'30.754"W	1.06	
6859.00	9.820	20.330	6787.96	690.43	699.11	522.65	40°08'38.012"N	104°51'30.681"W	1.38	
6901.00	8.860	14.430	6829.40	696.89	705.60	524.71	40°08'38.076"N	104°51'30.655"W	3.23	
6944.00	12.930	6.480	6871.62	704.85	713.59	526.07	40°08'38.155"N	104°51'30.637"W	10.07	
6986.00	18.940	3.040	6911.99	716.32	725.08	526.97	40°08'38.268"N	104°51'30.625"W	14.48	
7029.00	24.890	1.460	6951.86	732.34	741.11	527.57	40°08'38.427"N	104°51'30.618"W	13.90	
7072.00	31.490	0.470	6989.74	752.63	761.40	527.89	40°08'38.627"N	104°51'30.613"W	15.39	
7114.00	33.570	358.450	7025.15	775.21	783.98	527.67	40°08'38.850"N	104°51'30.616"W	5.59	
7157.00	34.190	359.520	7060.85	799.18	807.95	527.24	40°08'39.087"N	104°51'30.622"W	2.00	
7200.00	37.110	0.630	7095.79	824.24	833.01	527.29	40°08'39.335"N	104°51'30.621"W	6.96	
7242.00	41.900	2.610	7128.19	850.92	859.70	528.06	40°08'39.599"N	104°51'30.611"W	11.79	
7285.00	47.260	3.040	7158.80	881.02	889.84	529.56	40°08'39.896"N	104°51'30.592"W	12.48	
7327.00	53.470	2.390	7185.58	913.29	922.13	531.08	40°08'40.216"N	104°51'30.572"W	14.83	
7370.00	56.410	2.170	7210.28	948.42	957.30	532.48	40°08'40.563"N	104°51'30.554"W	6.85	
7413.00	58.280	359.590	7233.48	984.60	993.49	533.03	40°08'40.921"N	104°51'30.547"W	6.67	
7456.00	60.900	358.640	7255.25	1021.68	1030.57	532.45	40°08'41.287"N	104°51'30.555"W	6.38	

### REFERENCE WELLPATH IDENTIFICATION

Operator	KERR-MCGEE OIL & GAS ONSHORE LP (LAMBERT STATE PLANE COORD)	Slot	SLOT#14 VOLLMAR 28N-11HZ (1219'FNL & 1922'FWL, SEC.14)
Area	COLORADO	Well	VOLLMAR 28N-11HZ
Field	WELD COUNTY (KERR MCGEE)	Wellbore	VOLLMAR 28N-11HZ AWB <12881>
Facility	SEC.14-T2N-R67W		

### WELLPATH DATA (130 stations) † = interpolated/extrapolated station

MD [ft]	Inclination [°]	Azimuth [°]	TVD [ft]	Vert Sect [ft]	North [ft]	East [ft]	Latitude	Longitude	DLS [°/100ft]	Comments
7498.00	66.430	358.440	7273.87	1059.31	1068.18	531.49	40°08'41.659"N	104°51'30.567"W	13.17	
7541.00	70.330	357.490	7289.71	1099.27	1108.12	530.06	40°08'42.053"N	104°51'30.585"W	9.30	
7585.00	75.150	358.650	7302.76	1141.27	1150.10	528.66	40°08'42.468"N	104°51'30.604"W	11.24	
7628.00	77.540	359.760	7312.91	1183.05	1191.88	528.08	40°08'42.881"N	104°51'30.611"W	6.10	
7670.00	79.160	1.420	7321.40	1224.16	1233.01	528.50	40°08'43.288"N	104°51'30.605"W	5.46	
7713.00	82.400	3.180	7328.29	1266.53	1275.41	530.21	40°08'43.707"N	104°51'30.583"W	8.55	
7767.00	86.360	5.060	7333.57	1320.05	1329.00	534.07	40°08'44.236"N	104°51'30.534"W	8.11	
7804.00†	89.761	3.745	7334.83	1356.86	1365.86	536.91	40°08'44.601"N	104°51'30.497"W	9.85	7" CASING POINT
7814.00	90.680	3.390	7334.79	1366.83	1375.84	537.53	40°08'44.699"N	104°51'30.489"W	9.85	
7841.00	91.300	2.970	7334.32	1393.76	1402.80	539.03	40°08'44.966"N	104°51'30.470"W	2.77	
8012.00	90.120	1.710	7332.20	1564.46	1573.64	546.01	40°08'46.654"N	104°51'30.380"W	1.01	
8183.00	88.270	1.420	7334.60	1735.27	1744.55	550.68	40°08'48.343"N	104°51'30.320"W	1.10	
8353.00	89.040	0.150	7338.59	1905.14	1914.48	553.01	40°08'50.022"N	104°51'30.290"W	0.87	
8523.00	89.190	359.780	7341.22	2075.10	2084.46	552.90	40°08'51.702"N	104°51'30.291"W	0.23	
8694.00	88.690	358.840	7344.38	2246.07	2255.42	550.85	40°08'53.391"N	104°51'30.317"W	0.62	
8864.00	90.330	357.920	7345.84	2416.04	2425.33	546.04	40°08'55.070"N	104°51'30.379"W	1.11	
9035.00	90.890	357.600	7344.02	2586.99	2596.19	539.36	40°08'56.759"N	104°51'30.465"W	0.38	
9205.00	91.320	358.830	7340.74	2756.93	2766.08	534.06	40°08'58.438"N	104°51'30.533"W	0.77	
9375.00	91.860	358.740	7336.02	2926.86	2935.97	530.46	40°09'00.116"N	104°51'30.580"W	0.32	
9545.00	90.980	359.110	7331.81	3096.81	3105.89	527.27	40°09'01.796"N	104°51'30.621"W	0.56	
9715.00	90.030	358.670	7330.31	3266.80	3275.85	523.98	40°09'03.475"N	104°51'30.663"W	0.62	
9886.00	89.380	358.320	7331.19	3437.79	3446.78	519.49	40°09'05.164"N	104°51'30.721"W	0.43	
10057.00	89.930	358.010	7332.22	3608.76	3617.69	514.01	40°09'06.853"N	104°51'30.791"W	0.37	
10227.00	90.340	357.900	7331.82	3778.73	3787.58	507.94	40°09'08.532"N	104°51'30.870"W	0.25	
10399.00	90.890	357.180	7329.97	3950.66	3959.41	500.56	40°09'10.230"N	104°51'30.965"W	0.53	
10569.00	90.300	358.140	7328.21	4120.60	4129.26	493.62	40°09'11.909"N	104°51'31.054"W	0.66	
10739.00	91.200	358.850	7325.98	4290.57	4299.18	489.16	40°09'13.588"N	104°51'31.111"W	0.67	
10910.00	88.940	359.850	7325.77	4461.55	4470.16	487.22	40°09'15.277"N	104°51'31.136"W	1.45	
11082.00	89.350	358.260	7328.34	4633.53	4642.11	484.38	40°09'16.977"N	104°51'31.173"W	0.95	
11252.00	89.070	359.510	7330.68	4803.51	4812.06	481.07	40°09'18.656"N	104°51'31.215"W	0.75	
11422.00	89.660	0.190	7332.57	4973.48	4982.05	480.63	40°09'20.336"N	104°51'31.221"W	0.53	
11592.00	90.490	359.590	7332.35	5143.46	5152.04	480.30	40°09'22.016"N	104°51'31.225"W	0.60	
11763.00	90.330	358.980	7331.12	5314.45	5323.02	478.17	40°09'23.705"N	104°51'31.253"W	0.37	
11933.00	91.550	357.940	7328.33	5484.42	5492.93	473.60	40°09'25.385"N	104°51'31.311"W	0.94	
12102.00	90.920	359.400	7324.69	5653.37	5661.84	469.68	40°09'27.054"N	104°51'31.362"W	0.94	
12272.00	91.290	358.360	7321.41	5823.33	5831.78	466.36	40°09'28.733"N	104°51'31.405"W	0.65	
12443.00	90.770	358.030	7318.34	5994.28	6002.66	460.97	40°09'30.422"N	104°51'31.474"W	0.36	
12614.00	91.200	356.780	7315.40	6165.18	6173.46	453.23	40°09'32.110"N	104°51'31.574"W	0.77	
12787.00	91.990	356.240	7310.58	6337.94	6346.07	442.70	40°09'33.815"N	104°51'31.709"W	0.55	LAST BHI MWD+IFR SURVEYS
12881.00	91.990	356.240	7307.32	6431.77	6439.81	436.54	40°09'34.742"N	104°51'31.788"W	0.00	PROJECTION TO BIT

## REFERENCE WELLPATH IDENTIFICATION

Operator	KERR-MCGEE OIL & GAS ONSHORE LP (LAMBERT STATE PLANE COORD)	Slot	SLOT#14 VOLLMAR 28N-11HZ (1219'FNL & 1922'FWL, SEC.14)
Area	COLORADO	Well	VOLLMAR 28N-11HZ
Field	WELD COUNTY (KERR MCGEE)	Wellbore	VOLLMAR 28N-11HZ AWB <12881>
Facility	SEC.14-T2N-R67W		

## HOLE & CASING SECTIONS - Ref Wellbore: VOLLMAR 28N-11HZ AWB <12881> Ref Wellpath: VOLLMAR 28N-11HZ AWP

String/Diameter	Start MD [ft]	End MD [ft]	Interval [ft]	Start TVD [ft]	End TVD [ft]	Start N/S [ft]	Start E/W [ft]	End N/S [ft]	End E/W [ft]
13.5in Open Hole	16.00	1210.00	1194.00	16.00	1209.93	0.00	0.00	4.25	-2.43
9.625in Casing Surface	16.00	1204.00	1188.00	16.00	1203.93	0.00	0.00	4.25	-2.49
8.75in Open Hole	1210.00	7814.00	6604.00	1209.93	7334.79	4.25	-2.43	1375.84	537.53
7in Casing Intermediate	16.00	7804.00	7788.00	16.00	7334.83	0.00	0.00	1365.86	536.91
6.125in Open Hole	7814.00	12881.00	5067.00	7334.79	7307.32	1375.84	537.53	6439.81	436.54

## TARGETS

Name	TVD [ft]	North [ft]	East [ft]	Grid East [US ft]	Grid North [US ft]	Latitude	Longitude	Shape
SEC.11-T2N-R67W SECTION LINES	0.00	-11.64	-89.23	3178724.76	1295196.93	40°08'30.988"N	104°51'38.560"W	polygon
SEC.14-T2N-R67W SECTION LINES	0.00	-11.64	-89.23	3178724.76	1295196.93	40°08'30.988"N	104°51'38.560"W	polygon
SEC.11-T2N-R67W HARDLINES (460' SETBACKS)	7301.00	-11.64	-89.23	3178724.76	1295196.93	40°08'30.988"N	104°51'38.560"W	polygon
SEC.14-T2N-R67W HARDLINES (460' SETBACKS)	7301.00	-11.64	-89.23	3178724.76	1295196.93	40°08'30.988"N	104°51'38.560"W	polygon
VOLLMAR 28N-11HZ BHL ON PLAT REV-1 (50'FNL & 2346'FWL, SEC.11)	7301.00	6440.05	465.07	3179232.50	1301652.17	40°09'34.744"N	104°51'31.421"W	point
VOLLMAR 28N-11HZ LAND BOX	7301.00	0.00	0.00	3178813.91	1295209.21	40°08'31.103"N	104°51'37.411"W	polygon

## WELLPATH COMPOSITION - Ref Wellbore: VOLLMAR 28N-11HZ AWB <12881> Ref Wellpath: VOLLMAR 28N-11HZ AWP

Start MD [ft]	End MD [ft]	Positional Uncertainty Model	Log Name/Comment	Wellbore
16.00	1165.00	ISCWSA MWD, Rev. 2 (Standard)	CATHEDRAL MWD SURVEYS 13.5" <61-1165>	VOLLMAR 28N-11HZ AWB <12881>
1165.00	7767.00	NaviTrak (MAGCORR,IFR)	BHI MWD+IFR SURVEYS 8.75" <1246-7767>	VOLLMAR 28N-11HZ AWB <12881>
7767.00	12787.00	NaviTrak (MAGCORR,IFR)	BHI MWD+IFR SURVEYS 6.125" <7814-12787>	VOLLMAR 28N-11HZ AWB <12881>
12787.00	12881.00	Blind Drilling (std)	Projection to bit	VOLLMAR 28N-11HZ AWB <12881>

## REFERENCE WELLPATH IDENTIFICATION

Operator	KERR-MCGEE OIL & GAS ONSHORE LP (LAMBERT STATE PLANE COORD)	Slot	SLOT#14 VOLLMAR 28N-11HZ (1219'FNL & 1922'FWL, SEC.14)
Area	COLORADO	Well	VOLLMAR 28N-11HZ
Field	WELD COUNTY (KERR MCGEE)	Wellbore	VOLLMAR 28N-11HZ AWB <12881>
Facility	SEC.14-T2N-R67W		

## WELLPATH COMMENTS

MD [ft]	Inclination [°]	Azimuth [°]	TVD [ft]	Comment
61.00	0.400	179.400	61.00	BEGIN MWD SURVEYS
1165.00	0.500	77.400	1164.93	TIE-INTO MWD SURVEYS
1246.00	0.650	107.540	1245.92	BEGIN BHI MWD+IFR SURVEYS
7804.00	89.761	3.745	7334.83	7" CASING POINT
12787.00	91.990	356.240	7310.58	LAST BHI MWD+IFR SURVEYS
12881.00	91.990	356.240	7307.32	PROJECTION TO BIT