

**WPX Energy Rocky Mountain LLC - EBUS**

RGU 421-32-298

Cyclone 29

**Post Job Summary**  
**Cement Multi-Stage Surface**

Date Prepared: 11/15/2014

Job Date: 11/05/2014

Submitted by: Patrick Ealey – Grand Junction Cement Engineer

*The Road to Excellence Starts with Safety*

Sold To #: 300721		Ship To #: 3192974		Quote #: 0021934275		Sales Order #: 0901801651				
Customer: WPX ENERGY ROCKY MOUNTAIN LLC-EBUS				Customer Rep: RICK MORTIMER						
Well Name: FEDERAL		Well #: RG 421-32-298		API/UWI #: 05-103-11993-00						
Field: SULPHUR CREEK	City (SAP): RIO BLANCO	County/Parish: RIO BLANCO		State: COLORADO						
Legal Description: 29-2S-98W-1070FSL-1391FWL										
Contractor: CYCLONE				Rig/Platform Name/Num: CYCLONE 29						
Job BOM: 392189										
Well Type: DIRECTIONAL GAS										
Sales Person: HALAMERICA\HB50180				Srv Supervisor: Thomas Ponder						
Job										
Formation Name										
Formation Depth (MD)		Top			Bottom					
Form Type				BHST						
Job depth MD		3284ft		Job Depth TVD						
Water Depth				Wk Ht Above Floor		4ft				
Perforation Depth (MD)		From			To					
Well Data										
Description	New / Used	Size in	ID in	Weight lbm/ft	Thread	Grade	Top MD ft	Bottom MD ft	Top TVD ft	Bottom TVD ft
Open Hole Section			14.75				0	1600		0
Casing		9.625	8.921	36			0	3284		0
Open Hole Section			13.5				1600	3294	0	0
Tools and Accessories										
Type	Size in	Qty	Make	Depth ft		Type	Size in	Qty	Make	
Guide Shoe	9.625	1		3284		Top Plug	9.625			
Float Shoe	9.625					Bottom Plug	9.625			
Float Collar	9.625	1		3260.1		SSR plug set	9.625			
Insert Float	9.625					Plug Container	9.625			
Stage Tool	9.625	1		1671		Centralizers	9.625			
Miscellaneous Materials										
Gelling Agt		Conc		Surfactant		Conc		Acid Type		Qty
Treatment Fld		Conc		Inhibitor		Conc		Sand Type		Size
Fluid Data										
Stage/Plug #: 1										
Fluid #	Stage Type	Fluid Name		Qty	Qty UoM	Mixing Density lbm/gal	Yield ft3/sack	Mix Fluid Gal	Rate bbl/min	Total Mix Fluid Gal
1	Fresh Water	Fresh Water		40	bbl	8.33			4	
Fluid Data										
Fluid #	Stage Type	Fluid Name		Qty	Qty UoM	Mixing Density lbm/gal	Yield ft3/sack	Mix Fluid Gal	Rate bbl/min	Total Mix Fluid Gal
2	VersaCem GJ1	VERSACEM (TM) SYSTEM		405	sack	12.8	1.77		8	9.33



9.33 Gal		FRESH WATER							
Fluid #	Stage Type	Fluid Name	Qty	Qty UoM	Mixing Density lbm/gal	Yield ft3/sack	Mix Fluid Gal	Rate bbl/min	Total Mix Fluid Gal
3	VariCem GJ1	VARICEM (TM) CEMENT	225	sack	12.8	2.11		8	11.77
11.71 Gal		FRESH WATER							
Fluid #	Stage Type	Fluid Name	Qty	Qty UoM	Mixing Density lbm/gal	Yield ft3/sack	Mix Fluid Gal	Rate bbl/min	Total Mix Fluid Gal
4	Fresh Water Displacement	Fresh Water Displacement	252	bbl	8.3			10	
Cement Left In Pipe		Amount	45 ft		Reason		Shoe Joint		
Fluid Data									
Stage/Plug #: 2 *									
Fluid #	Stage Type	Fluid Name	Qty	Qty UoM	Mixing Density lbm/gal	Yield ft3/sack	Mix Fluid Gal	Rate bbl/min	Total Mix Fluid Gal
1	Fresh Water	Fresh Water	20	bbl	8.3			4	
Fluid #	Stage Type	Fluid Name	Qty	Qty UoM	Mixing Density lbm/gal	Yield ft3/sack	Mix Fluid Gal	Rate bbl/min	Total Mix Fluid Gal
2	VariCem GJ5	VARICEM (TM) CEMENT	875	sack	12.8	2.18		8	12.11
12.05 Gal		FRESH WATER							
Fluid #	Stage Type	Fluid Name	Qty	Qty UoM	Mixing Density lbm/gal	Yield ft3/sack	Mix Fluid Gal	Rate bbl/min	Total Mix Fluid Gal
3	Fresh Water Displacement	Fresh Water Displacement	129.2	bbl	8.3			10	
Fluid #	Stage Type	Fluid Name	Qty	Qty UoM	Mixing Density lbm/gal	Yield ft3/sack	Mix Fluid Gal	Rate bbl/min	Total Mix Fluid Gal
4	Halcem	HALCEM (TM) SYSTEM	100	sack	15.6	1.21		2	5.4
5.17 Gal		FRESH WATER							
Cement Left In Pipe		Amount	45 ft		Reason		Shoe Joint		
Comment									

## 3.1 Job Event Log

Type	Seq. No.	Activity	Date	Time	Source	DH Density (ppg)	Comb Pump Rate (bbl/min)	PS Pump Press (psi)	Pump Stg Tot (bbl)	Comment
Event	1	Call Out	11/4/2014	06:00:00	USER					ON LOCATION TIME @ 1200 ON 11/04/2014
Event	2	Pre-Convoy Safety Meeting	11/4/2014	08:45:00	USER					ALL HES INVOLVED IN CONVOY PRESENT FOR THE MEETING
Event	3	Crew Leave Yard	11/4/2014	09:00:00	USER					ALL VEHICLES LEFT YARD AT THE SAME TIME
Event	4	Arrive At Loc	11/4/2014	13:00:00	USER					LATE TO LOCATION DUE TO NOT BEING ABLE TO TRAVEL ON MUDDY ROADS WITHOUT CHAINS, CHAINED UP VEHICLES, RIG WAS STUCK IN THE WELL BORE WHEN CREW ARRIVED ON LOCATION
Event	5	Assessment Of Location Safety Meeting	11/5/2014	03:00:00	USER					TD - 3294', TP - 3284', SJ - 23.9', MUD - 8.9 PPG, OPEN HOLE - 14 3/4" FRO 0' TO 1600', OPEN HOLE - 13 1/2" FROM 1600' TO TD, SURFACE CASING - 9 5/8" 36#, MSC SET @ 1617'
Event	6	Pre-Rig Up Safety Meeting	11/5/2014	03:30:00	USER					JSA PERFORMED
Event	7	Rig-Up Equipment	11/5/2014	03:45:00	USER					1 - 550 PICK UP TRUCK, 1 - ELLITE PUMPING UNIT, 2 - 660 CUFT BULK TRAILERS, 2 - 1700 CUFT STORAGE SILOS, 2" CIRCULATING IRON, 1 - 9 5/8" PLUG CONTAINER AND QUICK LATCH, PLUG SET PROVIDED BY THE RIG
Event	8	Pre-Job Safety Meeting	11/5/2014	06:30:00	USER					ALL HES PRESENT, RIG CREW PRESENT, RIG HAD TO CIRCULATE THE LAST 2 JOINTS OF CASING DOWN STARTING @ 0300
Event	9	Start Job	11/5/2014	06:48:17	COM6					RIGGED UP MANIFOLD ON THE PLUG CONTAINER SO THAT THE RIGS MUD LINE CAN BE CONNECTED AT THE SAME TIME, LEFT HOSE DISCONNECTED TO INSURE THAT WE DID NOT PUMP PAST THE VALVE AND INTO THEIR STAND PIPE
Event	10	Prime Pumps	11/5/2014	06:49:13	COM6	8.33	2	75	2	FILL LINES WITH FRESH WATER
Event	11	Test Lines	11/5/2014	06:51:40	COM6		.1	5245	.1	GOOD PRESSURE TEST, NO LEAKS IN THE LINES

# HALLIBURTON

WPX ENERGY ROCKY MOUNTAIN LLC-EBUS  
901801651  
Case 1

OR ON THE MANIFOLD						
Event	12	Pump Spacer 1	11/5/2014	06:57:22	COM6	8.33 4 172 40
FRESH WATER						
Event	13	Pump Lead Cement	11/5/2014	07:09:51	COM6	12.8 8 625 127.7
SLOWED RATE AT THE END OF LEAD TO ALLOW MIXING TUB TO BUILD BACK UP						
Event	14	Pump Tail Cement	11/5/2014	07:26:58	COM6	12.8 8 545 84.6
225 SKS 12.8 PPG 2.11 FT3/SK 11.77 GAL/SK						
Event	15	Shutdown	11/5/2014	07:38:31	USER	
REMOVED THE TOP CAP TO THE PLUG CONTAINER TO DROP 1ST STAGE SHUTOFF PLUG						
Event	16	Drop Top Plug	11/5/2014	07:42:41	USER	
FRESH WATER, FIRST 10 BBL OF DISPLACEMENT USED TO WASH UP MIXING TUB, SLOWED RATE @ 120 BBL AWAY TO ALLOW PLUG TO PASS THROUGH THE MSC, REGAINED RATE @ 140 BBL WAY						
Event	17	Pump Displacement	11/5/2014	07:43:56	COM6	8.33 10 1015 242
GOOD RETURNS THROUGHOUT THE STAGE						
Event	18	Slow Rate	11/5/2014	08:13:33	USER	8.33 3 553 10
PLUG BUMPED						
Event	19	Bump Plug	11/5/2014	08:14:37	USER	3 575 252
FLOATS HEID, 1.5 BBL BACK TO THE DISPLACEMENT TANKS						
Event	20	Check Floats	11/5/2014	08:18:06	USER	1170 252
REMOVED TOP CAP TO THE PLUG CONTAINER TO DROP OPENENING DEVICE, PRE LOADED CLOSING PLUG						
Event	21	Drop Opening Device For Multiple Stage Cementer	11/5/2014	08:22:10	USER	
PRESSURED UP TO 840 PSI BEFORE MSC OPENED						
Event	22	Open Multiple Stage Cementer	11/5/2014	08:40:08	COM6	8.33 1 840 1
FRESH WATER, REESTABUSHED RETURNS @ 6.4 BBL AWAY						
Event	23	Pump Spacer 1	11/5/2014	08:40:33	USER	8.33 4 206 20
225 SKS 12.8 PPG 2.18 FT3/SK 12.11 GAL/SK, CIRCULATED 70 BBL OF CEMENT TO SURFACE FROM THE 1ST STAGE						
Event	24	Pump Tail Cement	11/5/2014	08:45:23	COM6	12.8 8 598 339.7
FRESH WATER, FIRST 10 BBL OF DISPLACEMENT USED TO WASH UP MIXING TUB HAD TO SLOW RATE TO ACCOMMODATE FOR THE DREDGE PUMP NOT WORKING						
Event	25	Pump Displacement	11/5/2014	09:32:28	COM6	8.33 10 740 119.2

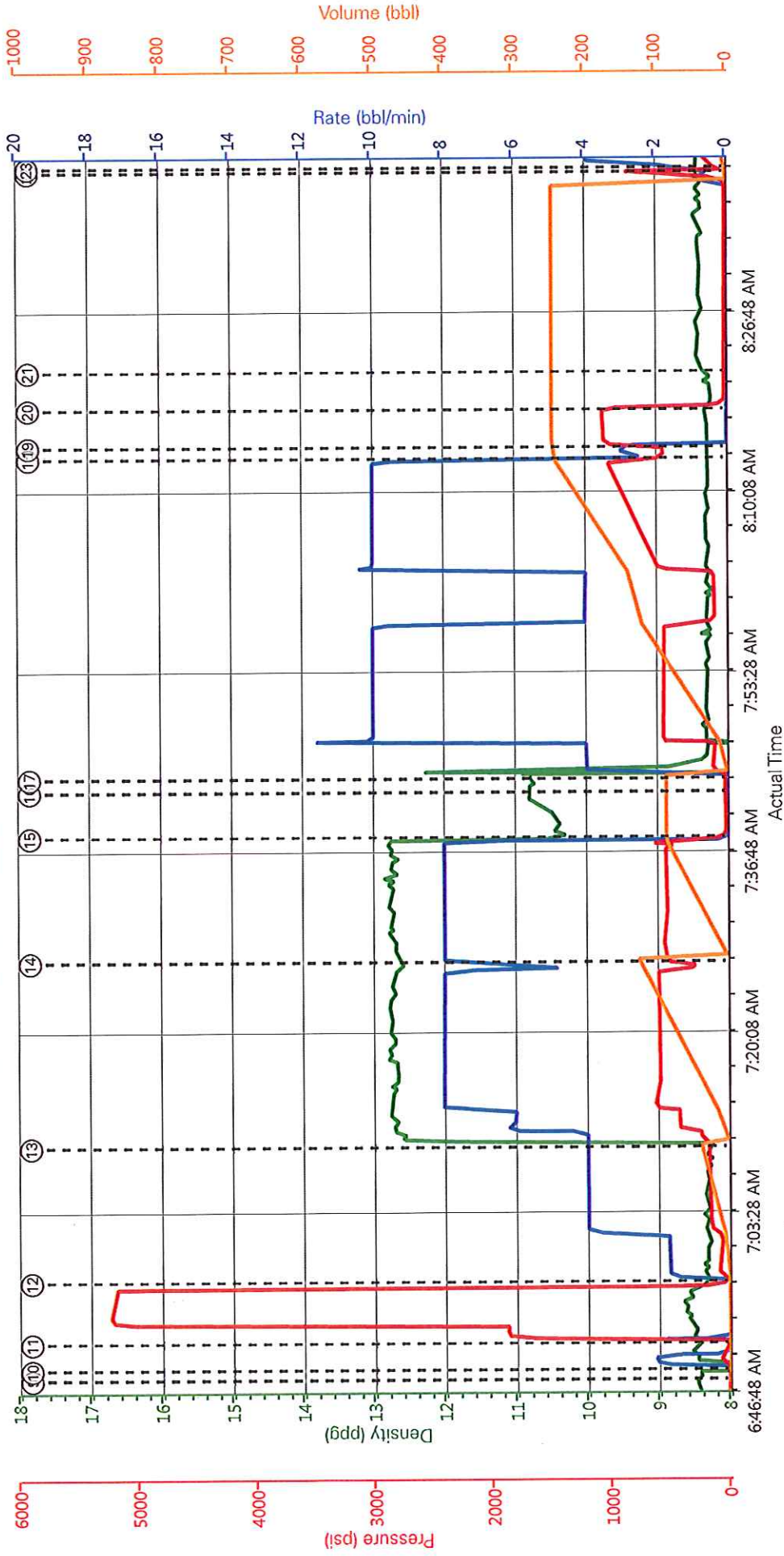
# HALLIBURTON

WPX ENERGY ROCKY MOUNTAIN LLC-EBUS  
901801651  
Case 1

Event	26	Slow Rate	11/5/2014	09:53:21	USER	8.33	2	400	10	GOOD RETURNS THROUGH OUT THE STAGE, CIRCULATED 90 BBL OF CEMENT TO SURFACE
Event	27	Bump Plug	11/5/2014	09:58:40	COM6		2	420	129.2	PLUG BUMPED
Event	28	Close Multiple Stage Cementer	11/5/2014	10:03:34	USER			1540	129.2	MSC CLOSED, 1 BBL BACK TO THE DISPLACEMENT TANKS
Event	29	End Job	11/5/2014	10:05:19	COM6					WAIT ON CEMENT TO FALL AND BUILD GEL STRENGTH BEFORE TOPPING OUT THE WELL
Event	30	Rig-Up Equipment	11/5/2014	10:30:00	USER					RIGGED UP TO THE CELLAR TO GET READY TO TOP OUT
Event	31	Start Job	11/5/2014	14:15:00	COM6					PERFORMED JSA WITH RIG ABOUT CACL2 LIQUID ADDITIVE AND CEMENT EXPOSURE
Event	32	Pump Cement	11/5/2014	14:20:15	COM6	15.6	2	75	21	100 SKS 15.6 PPg 1.21 FT3/SK 5.4 GAL/SK, CEMENT FELL 4" IN 30 MINS, CO REP CALLED IT GOOD AND RELEASED CREW
Event	33	Pump Water	11/5/2014	14:56:25	USER	8.33	2	50	3	FRESH WATER TO CLEAR CEMENT FROM LINES
Event	34	End Job	11/5/2014	15:00:05	COM6					THANK YOU FOR CHOOSING HALLIBURTON, THOMAS PONDER AND CREW



WPX - FEDERAL RG 421-32-298 - 9.625 IN MUTLI STAGE 1ST STAGE



DH Density (ppg) Comb Pump Rate (bbl/min) PS Pump Press (psi) Pump Stg Tot (bbl)

- |   |                          |                     |   |
|---|--------------------------|---------------------|---|
| ① Call Out                              | ⑦ Rig-Up Equipment       | ⑬ Pump Lead Cement  | ⑮ Bump Plug                                     |
| ② Pre-Convoy Safety Meeting             | ⑧ Pre-Job Safety Meeting | ⑭ Pump Tail Cement  | ⑯ Check Floats                                  |
| ③ Crew Leave Yard                       | ⑨ Start Job              | ⑰ Shutdown          | ⑰ Drop Opening Device For Multiple Stage Cement |
| ④ Arrive At Loc                         | ⑩ Prime Pumps            | ⑱ Drop Top Plug     | ⑱ Open Multiple Stage Cement                    |
| ⑤ Assessment Of Location Safety Meeting | ⑪ Test Lines             | ⑲ Pump Displacement | ⑲ Pump Spacer 1                                 |
| ⑥ Pre-Rig Up Safety Meeting             | ⑫ Pump Spacer 1          | ⑳ Slow Rate         | ⑳ Pump Tail Cement                              |

▼ **HALLIBURTON** | iCem® Service

Created: 2014-11-05 04:29:00, Version: 3.0.121

Edit

Customer : WPX ENERGY ROCKY MOUNTAIN LLC-  
EBUS

Job Date : 11/5/2014 4:30:33 AM

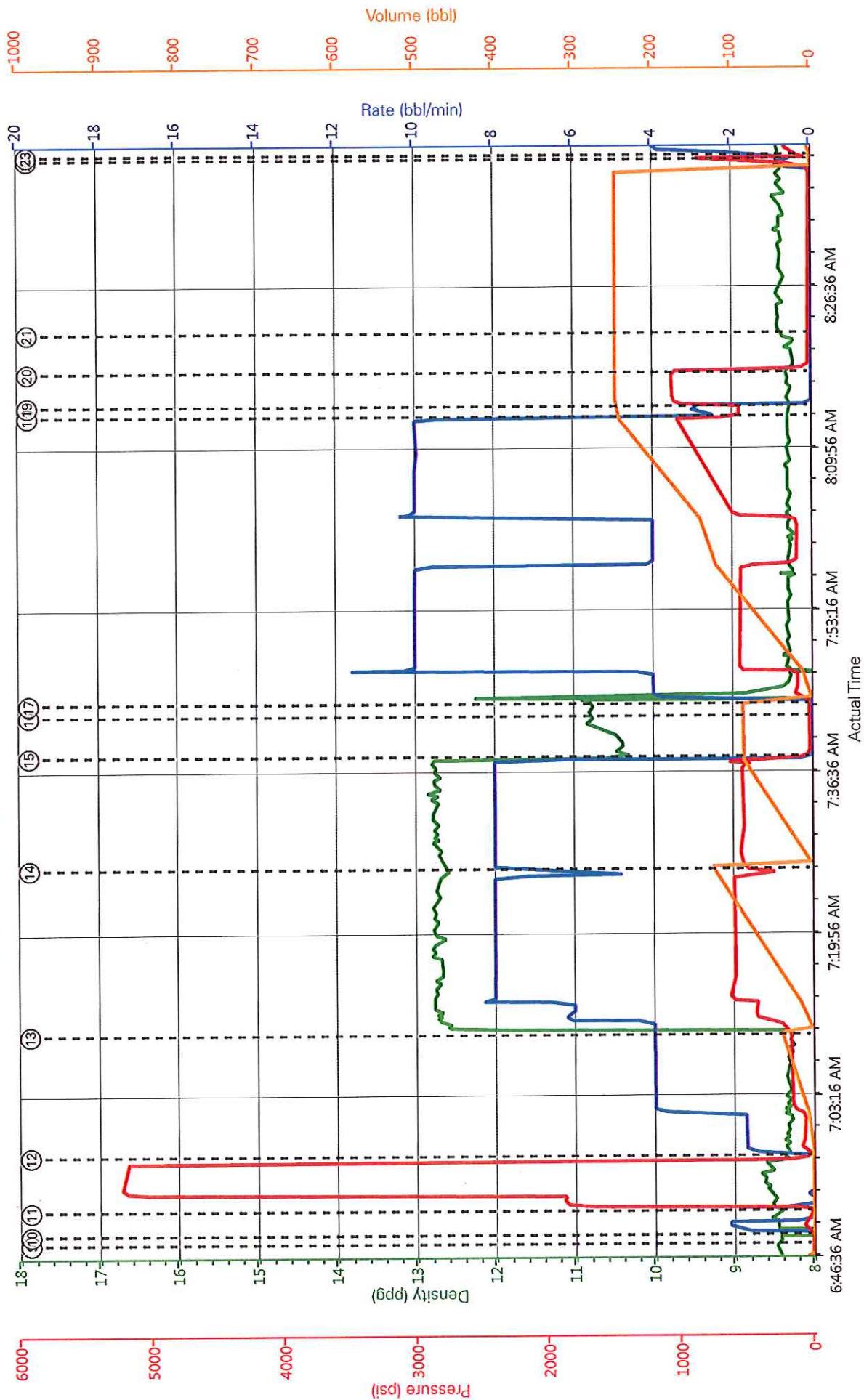
Well : FEDERAL RG 421-32-298

Representative :

Sales Order #: 901801651

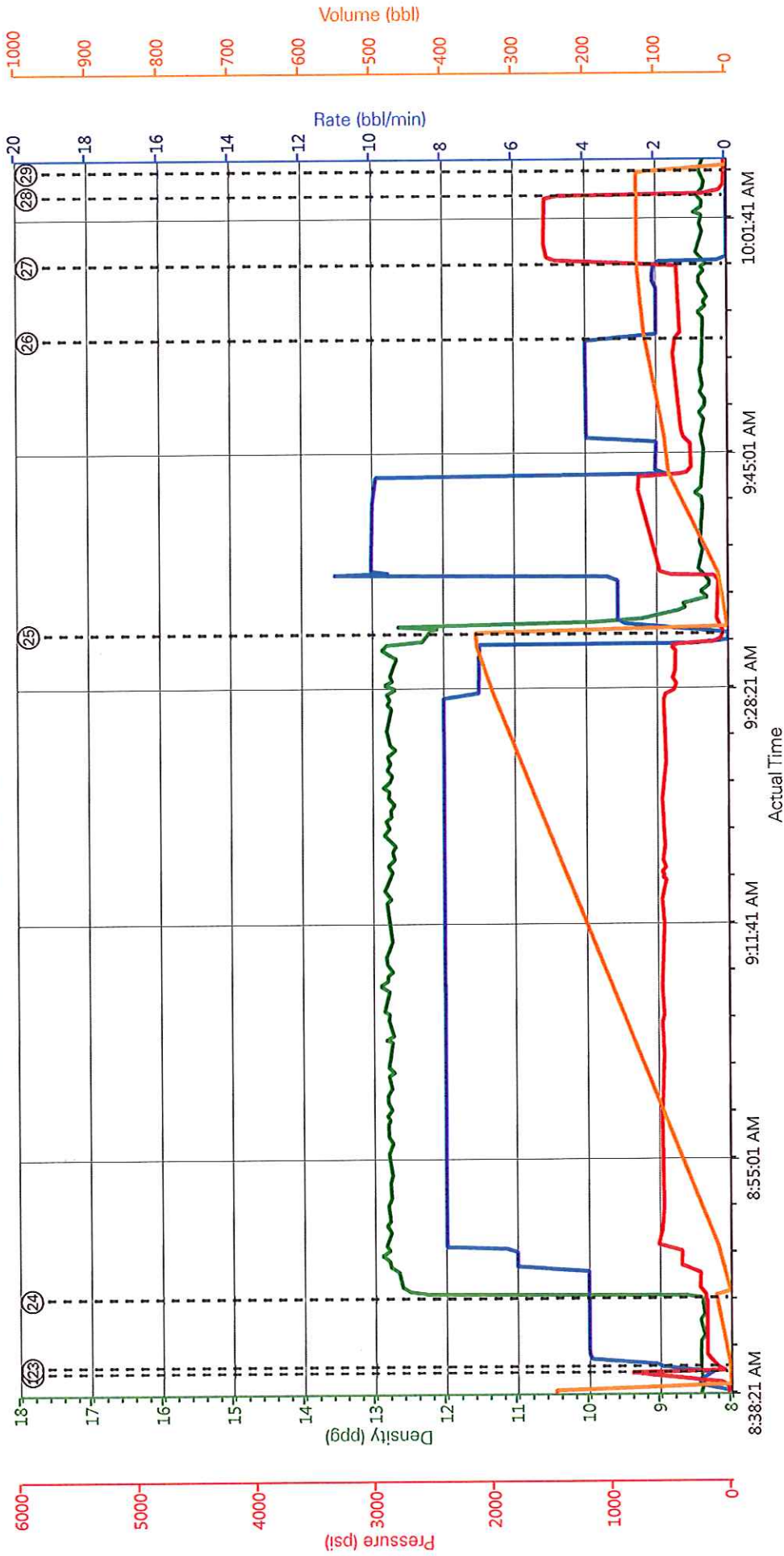
ELITE #3: TRAVIS BROWN / THOMAS PONDER

# WPX - FEDERAL RG 421-32-298 - 9.625 IN MUTLI STAGE 1ST STAGE





WPX - FEDERAL RG 421-32-298 - 9.625 IN MUTLI STAGE 2ND STAGE



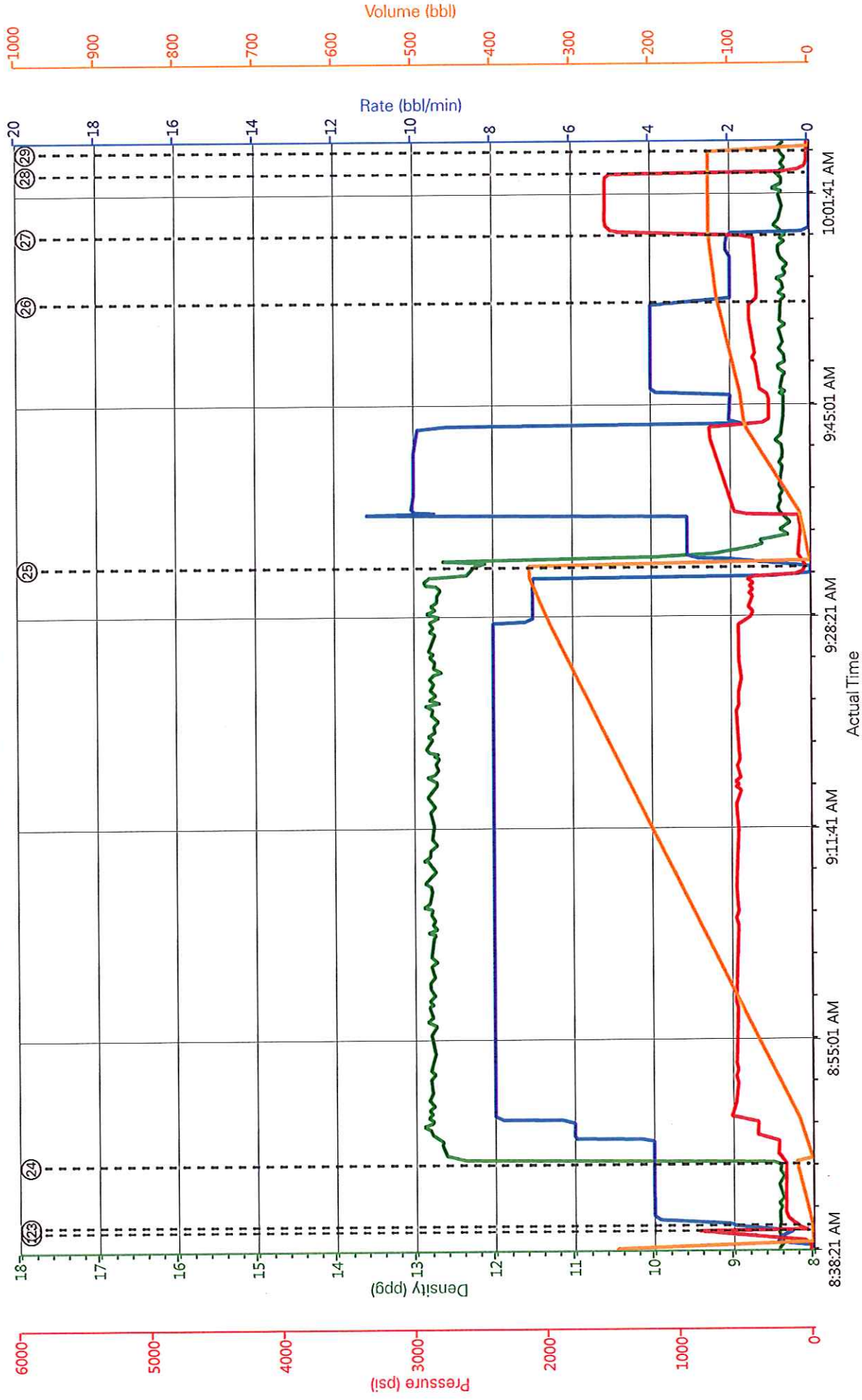
DH Density (ppg)    Comb Pump Rate (bbl/min)    PS Pump Press (psi)    Pump Stg Tot (bbl)

- |   |                          |                     |   |                                |
|---|--------------------------|---------------------|---|--------------------------------|
| ① Call Out                              | ⑦ Rig-Up Equipment       | ⑬ Pump Lead Cement  | ⑰ Bump Plug                                     | 25 Pump Displacement           |
| ② Pre-Convoy Safety Meeting             | ⑧ Pre-Job Safety Meeting | ⑭ Pump Tail Cement  | ⑱ Check Floats                                  | 26 Slow Rate                   |
| ③ Crew Leave Yard                       | ⑨ Start Job              | ⑮ Shutdown          | ⑲ Drop Opening Device For Multiple Stage Cement | 27 Bump Plug                   |
| ④ Arrive At Loc                         | ⑩ Prime Pumps            | ⑯ Drop Top Plug     | ⑳ Open Multiple Stage Cement                    | 28 Close Multiple Stage Cement |
| ⑤ Assessment Of Location Safety Meeting | ⑪ Test Lines             | ⑰ Pump Displacement | ㉑ Pump Spacer 1                                 | 29 End Job                     |
| ⑥ Pre-Rig Up Safety Meeting             | ⑫ Pump Spacer 1          | ㉒ Slow Rate         | ㉓ Pump Tail Cement                              |                                |

▼ **HALLIBURTON** | iCem® Service

Created: 2014-11-05 04:29:00, Version: 3.0.121 Edit

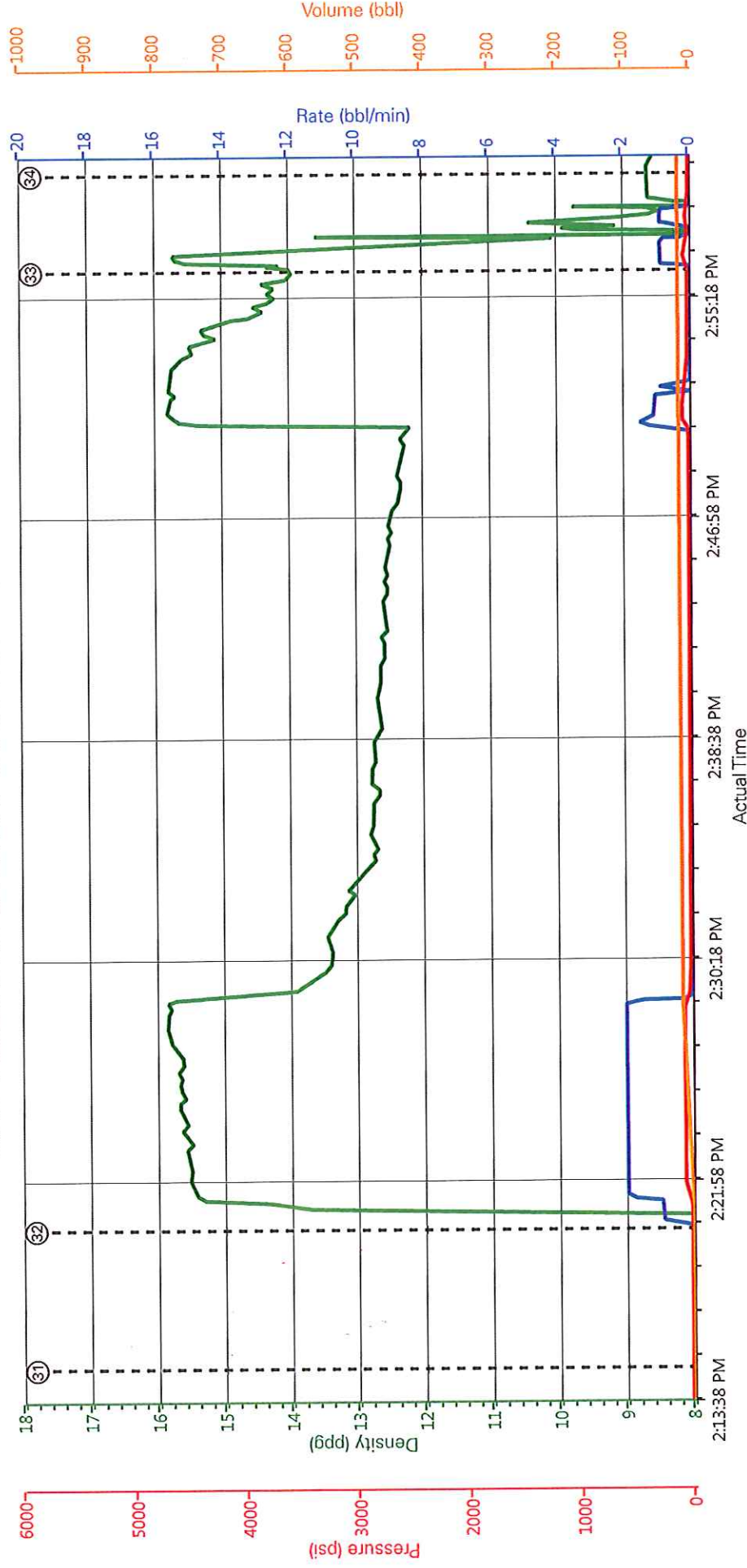
# WPX - FEDERAL RG 421-32-298 - 9.625 IN MUTLI STAGE 2ND STAGE



— DH Density (ppg)   
 — Comb Pump Rate (bbl/min)   
 — PS Pump Press (psi)   
 — Pump Stg Tot (bbl)



# WPX - FEDERAL RG 421-32-298 - 9.625 IN MUTLI STAGE TOP OUT



DH Density (ppg) Comb Pump Rate (bbl/min) PS Pump Press (psi) Pump Stg Tot (bbl)

1 Call Out	8 Pre-Job Safety Meeting	15 Shutdown	22 Open Multiple Stage Cement	29 End Job
2 Pre-Convoy Safety Meeting	9 Start Job	16 Drop Top Plug	23 Pump Spacer 1	30 Rig-Up Equipment
3 Crew Leave Yard	10 Prime Pumps	17 Pump Displacement	24 Pump Tail Cement	31 Start Job
4 Arrive At Loc	11 Test Lines	18 Slow Rate	25 Pump Displacement	32 Pump Cement
5 Assessment Of Location Safety Meeting	12 Pump Spacer 1	19 Bump Plug	26 Slow Rate	33 Pump Water
6 Pre-Rig Up Safety Meeting	13 Pump Lead Cement	20 Check Floats	27 Bump Plug	34 End Job
7 Rig-Up Equipment	14 Pump Tail Cement	21 Drop Opening Device For Multiple Stage Cement	28 Close Multiple Stage Cement	

▼ **HALLIBURTON** | iCem® Service

Created: 2014-11-05 04:29:00, Version: 3.0.121

Edit

Customer : WPX ENERGY ROCKY MOUNTAIN LLC-  
EBUS

Job Date : 11/5/2014 4:30:33 AM

Well : FEDERAL RG 421-32-298

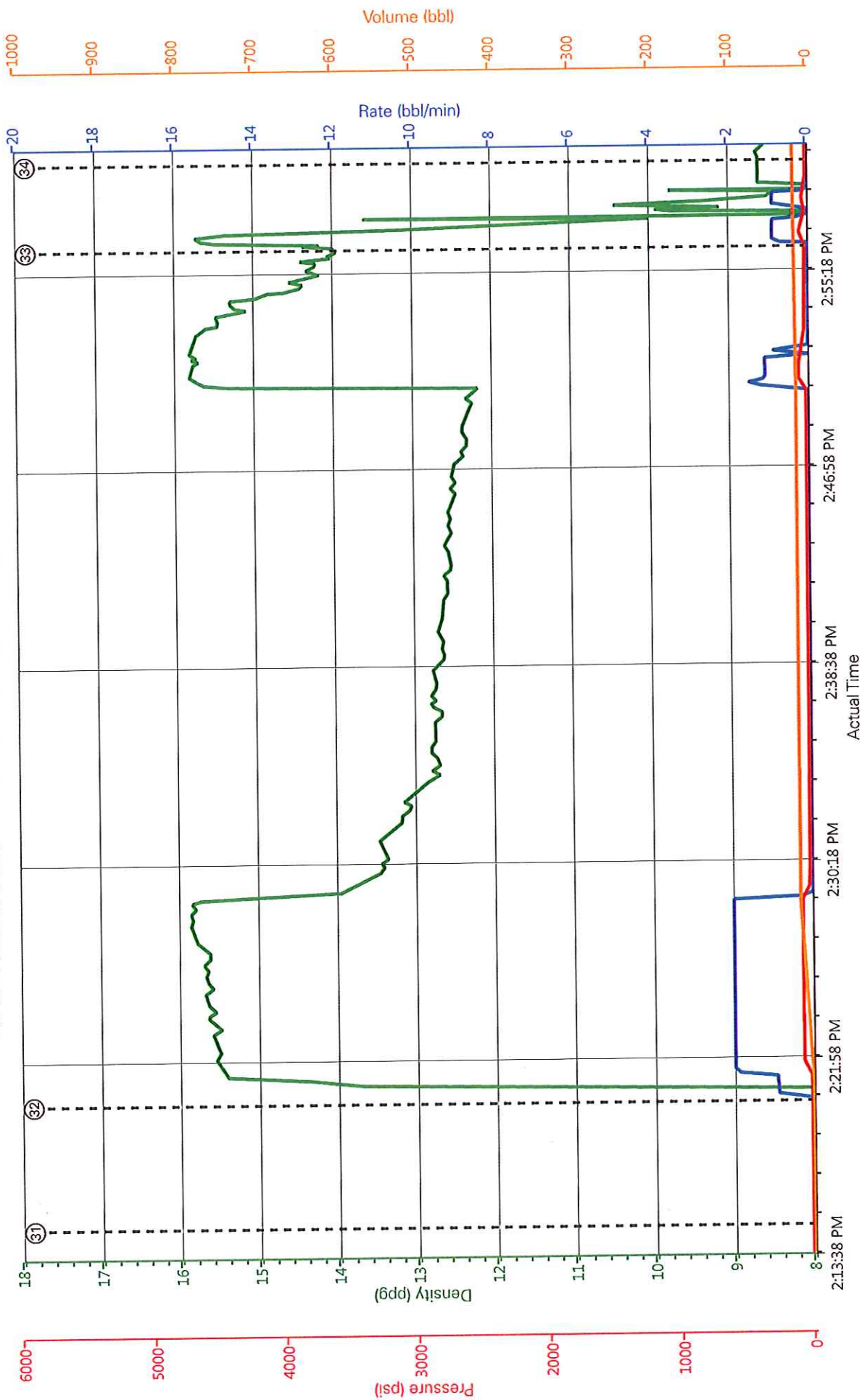
Representative :

Sales Order # : 901801651

ELITE #3 : TRAVIS BROWN / THOMAS PONDER



# WPX - FEDERAL RG 421-32-298 - 9.625 IN MUTLI STAGETOP OUT



▼ **HALLIBURTON** | iCem® Service

Created: 2014-11-05 04:29:00, Version: 3.0.121

[Edit](#)

Customer : WPX ENERGY ROCKY MOUNTAIN LLC-EBUS

Job Date : 11/5/2014 4:30:33 AM

Well : FEDERAL RG 421-32-298

Representative :

Sales Order # : 901801651

ELITE #3: TRAVIS BROWN / THOMAS PONDER

# HALLIBURTON

Company: WPX Date: 11/5/2014  
Submitted by: THOMAS PONDER Date Rec.: 11/5/2014  
Attention: LARRY COOKSEY S.O.# 901801651  
Lease FEDERAL Job Type: MULTI STAGE SURFACE  
Well # RG 421-32-298

Specific Gravity	<i>MAX</i>	<i>1</i>
pH	<i>8</i>	<i>7</i>
Potassium (K)	<i>5000</i>	<i>250 Mg / L</i>
Calcium (Ca)	<i>500</i>	<i>120 Mg / L</i>
Iron (FE2)	<i>300</i>	<i>0 Mg / L</i>
Chlorides (Cl)	<i>3000</i>	<i>0 Mg / L</i>
Sulfates (SO <sub>4</sub> )	<i>1500</i>	<i>&lt;200 Mg / L</i>
Carbonates hardness		
Temp	<i>40-80</i>	<i>42 Deg</i>
Total Dissolved Solids		<i>260 Mg / L</i>

Respectfully: THOMAS PONDER

Title: CEMENTING SUPERVISOR

Location: GRAND JCT, CO

<b>Sales Order #:</b> 0901810930	<b>Line Item:</b> 10	<b>Survey Conducted Date:</b> 11/5/2014
<b>Customer:</b> URSA RESOURCES GROUP II LLC		<b>Job Type (BOM):</b> CMT SURFACE CASING BOM
<b>Customer Representative:</b>		<b>API / UWI: (leave blank if unknown)</b> 05-045-22362-00
<b>Well Name:</b> VALLEY FARMS -L-		<b>Well Number:</b> 0080600812
<b>Well Type:</b> DIRECTIONAL GAS	<b>Well Country:</b> USA	
<b>H2S Present:</b> No	<b>Well State:</b> COLORADO	<b>Well County:</b> GARFIELD

Dear Customer,

We hope that you were satisfied with the service quality of this job performed by Halliburton. It is the aim of our management and service personnel to deliver equipment and service of a standard unmatched in the service sector of the energy industry.

Please take the time to let us know if our performance met with your satisfaction. Please be as critical as possible to ensure we constantly improve our service. Your comments are of great value to us and are intended for the exclusive use of Halliburton.

### CUSTOMER SATISFACTION SURVEY

CATEGORY	CUSTOMER SATISFACTION RESPONSE	
Survey Conducted Date	The date the survey was conducted	11/5/2014
Survey Interviewer	The survey interviewer is the person who initiated the survey.	HX41187
Customer Participation	Did the customer participate in this survey? (Y/N)	No
Customer Representative	Enter the Customer representative name	
HSE	Was our HSE performance satisfactory? Circle Y or N	
Equipment	Were you satisfied with our Equipment? Circle Y or N	
Personnel	Were you satisfied with our people? Circle Y or N	
Customer Comment	Customer's Comment	

CUSTOMER SIGNATURE
--------------------



<b>Sales Order #:</b> 0901810930	<b>Line Item:</b> 10	<b>Survey Conducted Date:</b> 11/5/2014
<b>Customer:</b> URSA RESOURCES GROUP II LLC		<b>Job Type (BOM):</b> CMT SURFACE CASING BOM
<b>Customer Representative:</b>		<b>API / UWI: (leave blank if unknown)</b> 05-045-22362-00
<b>Well Name:</b> VALLEY FARMS -L-		<b>Well Number:</b> 0080600812
<b>Well Type:</b> DIRECTIONAL GAS	<b>Well Country:</b> USA	
<b>H2S Present:</b> No	<b>Well State:</b> COLORADO	<b>Well County:</b> GARFIELD

### KEY PERFORMANCE INDICATORS

General	
<b>Survey Conducted Date</b> The date the survey was conducted	11/5/2014

Cementing KPI Survey	
<b>Type of Job</b> Select the type of job. (Cementing or Non-Cementing)	0
<b>Select the Maximum Deviation range for this Job</b> What is the highest deviation for the job you just completed? This may not be the maximum well deviation.	Deviated
<b>Total Operating Time (hours)</b> Total Operating Hours Including Rig-up, Pumping, Rig-down. Enter in decimal format.	8
<b>HSE Incident, Accident, Injury</b> HSE Incident, Accident, Injury. This should be recordable incidents only.	No
<b>Was the job purpose achieved?</b> Was the job delivered correctly as per customer agreed design?	Yes
<b>Operating Hours (Pumping Hours)</b> Total number of hours pumping fluid on this job. Enter in decimal format.	5
<b>Customer Non-Productive Rig Time (hrs)</b> Lost time due to Halliburton in the start, execution, or completion of an ordered service or product, or delays in a follow-on service. Enter in decimal format. 0 if none.	0
<b>Type of Rig Classification Job Was Performed</b> Type Of Rig (classification) Job Was Performed On	Drilling Rig (Portable)
<b>Number Of JSAs Performed</b> Number Of Jsas Performed	6
<b>Number of Unplanned Shutdowns</b> Unplanned shutdown is when injection stops for any period of time.	0
<b>Was this a Primary Cement Job (Yes / No)</b>	Yes

<b>Sales Order #:</b> 0901810930	<b>Line Item:</b> 10	<b>Survey Conducted Date:</b> 11/5/2014
<b>Customer:</b> URSA RESOURCES GROUP II LLC		<b>Job Type (BOM):</b> CMT SURFACE CASING BOM
<b>Customer Representative:</b>		<b>API / UWI: (leave blank if unknown)</b> 05-045-22362-00
<b>Well Name:</b> VALLEY FARMS -L-		<b>Well Number:</b> 0080600812
<b>Well Type:</b> DIRECTIONAL GAS	<b>Well Country:</b> USA	
<b>H2S Present:</b> No	<b>Well State:</b> COLORADO	<b>Well County:</b> GARFIELD

Primary Cement Job= Casing job, Liner job, or Tie-back job.	
<b>Did We Run Wiper Plugs?</b> Did We Run Top And Bottom Casing Wiper Plugs?	None
<b>Mixing Density of Job Stayed in Designed Density Range (0-100%)</b> Density Range defined as +/- .20 ppg. Calculation: Total BBLs cement mixed at designed density divided by total BBLs of cement multiplied by 100	99
<b>Was Automated Density Control Used?</b> Was Automated Density Control (ADC) Used ?	Yes
<b>Pump Rate (percent) of Job Stayed At Designed Pump Rate</b> Pump Rate range defined as +/- 1bbl/min. Calculation: Total BBLs of fluid pumped at the designed rate divided by Total BBLs of fluid pumped, multiplied by 100	99
<b>Nbr of Remedial Sqz Jobs Rqd - Competition</b> Number Of Remedial Squeeze Jobs Required After Primary Job Performed By Competition	0
<b>Nbr of Remedial Plug Jobs Rqd - HES</b> Number Of Remedial Plug Jobs Needed After Primary Plug Pumped By HES	0
<b>Nbr of Remedial Sqz Jobs Rqd - HES</b> Number Of Remedial Squeeze Jobs Required After Primary Job Performed By HES	0

**WPX ENERGY ROCKY MOUNTAIN LLC-EBUS**

RGU 421-32-298

Cyclone 29

**Post Job Summary**  
**Cement Production Casing**

Date Prepared: 11/16/2014 Job

Date: 11/12/2014

Submitted by: Aaron Katz – Grand Junction Cement Engineer



*The Road to Excellence Starts with Safety*

Sold To #: 300721	Ship To #: 3192974	Quote #: 0021933278	Sales Order #: 0901818121
Customer: WPX ENERGY ROCKY MOUNTAIN LLC-EBUS	Customer Rep: TOM BROWN		
Well Name: FEDERAL	Well #: RG 421-32-298	API/UWI #: 05-103-11993-00	
Field: SULPHUR CREEK	City (SAP): RIO BLANCO	County/Parish: RIO BLANCO	State: COLORADO
Legal Description: 29-2S-98W-1070FSL-1391FWL			
Contractor: CYCLONE	Rig/Platform Name/Num: CYCLONE 29		
Job BOM: 7523			
Well Type: DIRECTIONAL GAS			
Sales Person: HALAMERICA\HB50180	Srv Supervisor: Eric Carter		

**Job**

Formation Name	
Formation Depth (MD)	Top 3280 FT. Bottom 10070 FT.
Form Type	BHST
Job depth MD	10060ft
Water Depth	Wk Ht Above Floor 5 FT.
Perforation Depth (MD)	From To

**Well Data**

Description	New / Used	Size in	ID in	Weight lbm/ft	Thread	Grade	Top MD ft	Bottom MD ft	Top TVD ft	Bottom TVD ft
Casing		9.625	8.921	36			0	3280		0
Casing		4.5	4	11.6			0	10060		0
Open Hole Section			8.75				3280	8055	0	0
Open Hole Section			7.875				8055	10070	0	0

**Tools and Accessories**

Type	Size in	Qty	Make	Depth ft	Type	Size in	Qty	Make
Guide Shoe					Top Plug			
Float Shoe					Bottom Plug			
Float Collar					SSR plug set			
Insert Float					Plug Container	4.5	1	HES
Stage Tool					Centralizers			

**Miscellaneous Materials**

Gelling Agt	Conc	Surfactant	Conc	Acid Type	Qty	Conc
Treatment Fld	Conc	Inhibitor	Conc	Sand Type	Size	Qty

**Fluid Data**

Stage/Plug #: 1										
Fluid #	Stage Type	Fluid Name	Qty	Qty UoM	Mixing Density lbm/gal	Yield ft3/sack	Mix Fluid Gal	Rate bbl/min	Total Mix Fluid Gal	
1	Fresh Water	Fresh Water	100	bbl	8.34			8		
Fluid #	Stage Type	Fluid Name	Qty	Qty UoM	Mixing Density lbm/gal	Yield ft3/sack	Mix Fluid Gal	Rate bbl/min	Total Mix Fluid Gal	