

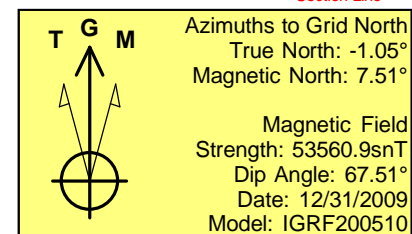
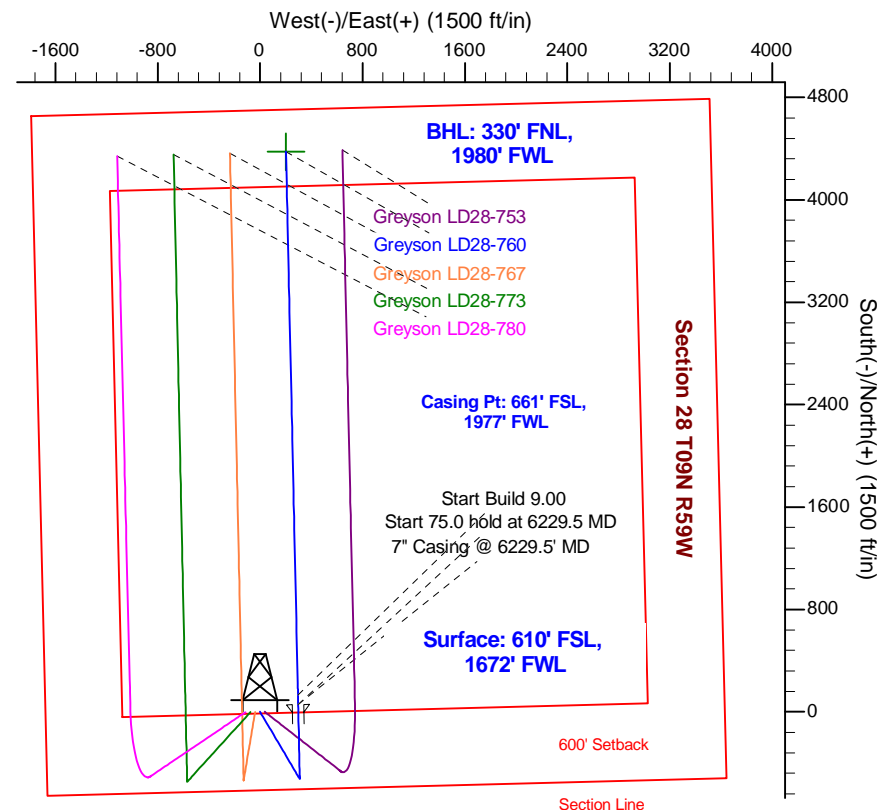
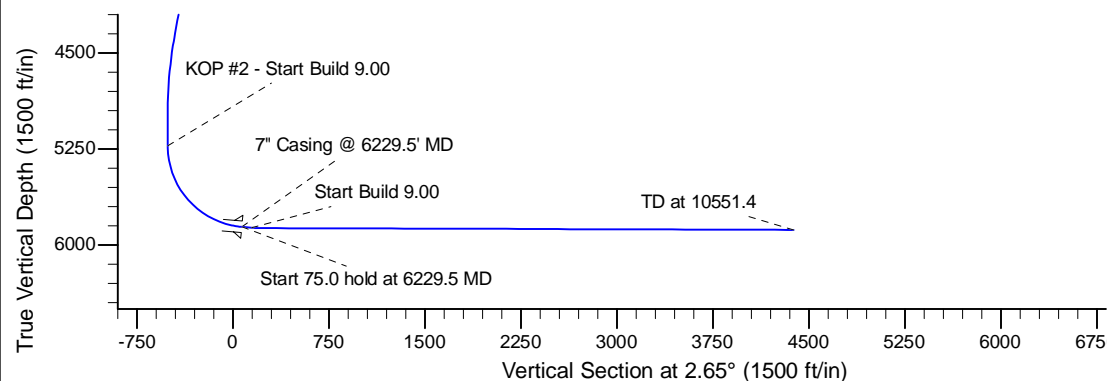
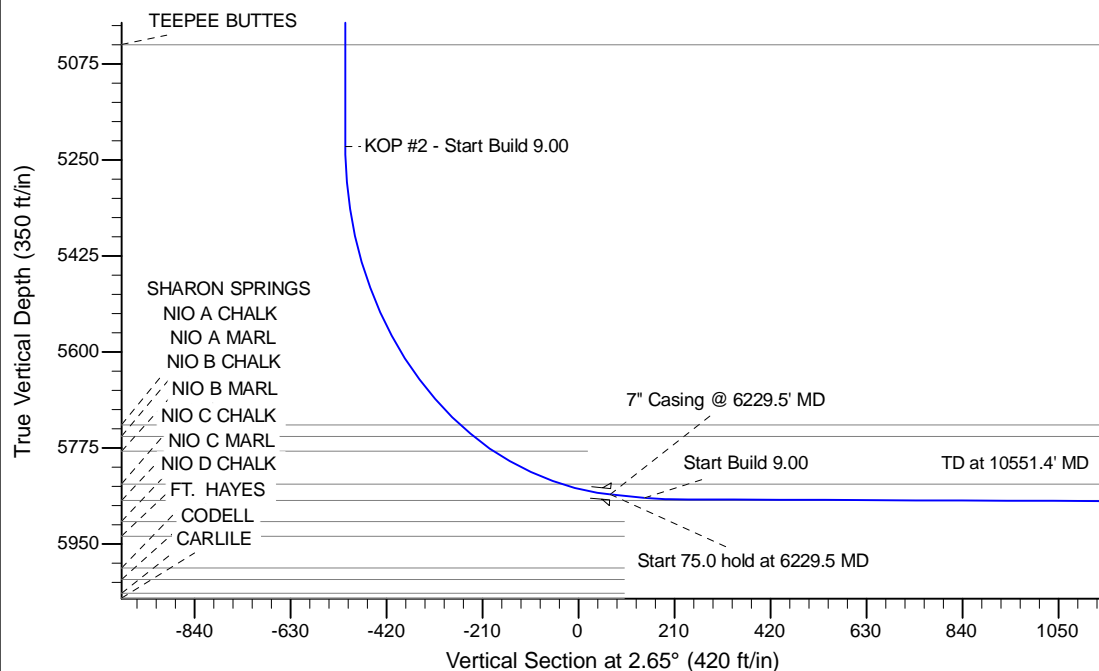
Project: Wattenberg Field
 Site: LD (Sec.28-T09N-R58W) Weld County, CO
 Well: Greyson LD28-760
 Wellbore: Original Drilling
 Design: APD - Rev 0

Northern Region Drilling - Working

Geodetic System: US State Plane 1983
 Datum: North American Datum 1983
 Ellipsoid: GRS 1980
 Zone: Colorado Northern Zone
 System Datum: Mean Sea Level

SECTION DETAILS

Sec	MD	Inc	Azi	TVD	+N/-S	+E/-W	Dleg	TFace	Vsect	Target
1	0.0	0.00	0.00	0.0	0.0	0.0	0.00	0.00	0.0	
2	1500.0	0.00	0.00	1500.0	0.0	0.0	0.00	0.00	0.0	
3	2098.9	11.98	149.44	2094.5	-53.7	31.7	2.00	149.44	-52.2	
4	4435.7	11.98	149.44	4380.5	-471.3	278.3	0.00	0.00	-457.9	
5	5034.6	0.00	0.00	4975.0	-525.0	310.0	2.00	180.00	-510.1	
6	5285.1	0.00	0.00	5225.5	-525.0	310.0	0.00	0.00	-510.1	
7	6229.5	85.00	358.74	5859.7	56.0	297.2	9.00	358.74	69.7	
8	6304.5	85.00	358.74	5866.2	130.7	295.6	0.00	0.00	144.2	
9	6357.9	89.80	358.74	5868.7	183.9	294.4	9.00	0.00	197.4	
10	10551.4	89.80	358.74	5883.3	4376.5	202.4	0.00	0.00	4381.1	Greyson LD28-760 BHL 330'FNL, 1980'FWL



WELL DETAILS: Greyson LD28-760					
Ground Level: 4854.0					
0.0	0.0	Northing	Easting	Latitude	Longitude
		1507998.03	3451150.79	40.716480	-103.872440
Plan: APD - Rev 0 (Greyson LD28-760/Original Drilling)					
Created By: Shailey Jewell		Date: 12:33, March 05 2015			
Checked: _____		Date: _____			
Reviewed: _____		Date: _____			
Approved: _____		Date: _____			

Northern Region Drilling - Working

Wattenberg Field

LD (09N-58W)

Greyson LD28-760

Original Drilling

Plan: APD - Rev 0

Standard Planning Report

05 March, 2015

Noble Energy Inc

Planning Report

Database:	EDM01P	Local Co-ordinate Reference:	Well Greyson LD28-760
Company:	Northern Region Drilling - Working	TVD Reference:	WELL @ 4878.0ft (Original Well Elev)
Project:	Wattenberg Field	MD Reference:	WELL @ 4878.0ft (Original Well Elev)
Site:	LD (09N-58W)	North Reference:	Grid
Well:	Greyson LD28-760	Survey Calculation Method:	Minimum Curvature
Wellbore:	Original Drilling		
Design:	APD - Rev 0		

Project	Wattenberg Field, Weld County CO		
Map System:	US State Plane 1983	System Datum:	Mean Sea Level
Geo Datum:	North American Datum 1983		
Map Zone:	Colorado Northern Zone		Using geodetic scale factor

Site		LD (09N-58W)			
Site Position:		Northing:	1,523,557.18 usft	Latitude:	40.759270
From:	Lat/Long	Easting:	3,449,341.23 usft	Longitude:	-103.877940
Position Uncertainty:	0.0 ft	Slot Radius:	13-3/16 "	Grid Convergence:	1.05 °

Well	Greyson LD28-760					
Well Position	+N/-S	-15,559.2 ft	Northing:	1,507,998.03 usft	Latitude:	40.716480
	+E/-W	1,809.6 ft	Easting:	3,451,150.79 usft	Longitude:	-103.872440
Position Uncertainty		0.0 ft	Wellhead Elevation:	0.0 ft	Ground Level:	4,854.0 ft

Wellbore	Original Drilling				
Magnetics	Model Name	Sample Date	Declination (°)	Dip Angle (°)	Field Strength (nT)
	IGRF200510	12/31/2009	8.56	67.51	53,561

Design	APD - Rev 0			
Audit Notes:				
Version:	Phase:	PROTOTYPE	Tie On Depth:	0.0
Vertical Section:	Depth From (TVD) (ft)	+N/-S (ft)	+E/-W (ft)	Direction (°)
	0.0	0.0	0.0	2.65

Plan Sections										
Measured Depth (ft)	Inclination (°)	Azimuth (°)	Vertical Depth (ft)	+N/-S (ft)	+E/-W (ft)	Dogleg Rate (°/100usft)	Build Rate (°/100usft)	Turn Rate (°/100usft)	TFO (°)	Target
0.0	0.00	0.00	0.0	0.0	0.0	0.00	0.00	0.00	0.00	
1,500.0	0.00	0.00	1,500.0	0.0	0.0	0.00	0.00	0.00	0.00	
2,098.9	11.98	149.44	2,094.5	-53.7	31.7	2.00	2.00	0.00	149.44	
4,435.7	11.98	149.44	4,380.5	-471.3	278.3	0.00	0.00	0.00	0.00	
5,034.6	0.00	0.00	4,975.0	-525.0	310.0	2.00	-2.00	0.00	180.00	
5,285.1	0.00	0.00	5,225.5	-525.0	310.0	0.00	0.00	0.00	0.00	
6,229.5	85.00	358.74	5,859.7	56.0	297.2	9.00	9.00	0.00	358.74	
6,304.5	85.00	358.74	5,866.2	130.7	295.6	0.00	0.00	0.00	0.00	
6,357.9	89.80	358.74	5,868.7	183.9	294.4	9.00	9.00	0.00	0.00	
10,551.4	89.80	358.74	5,883.3	4,376.5	202.4	0.00	0.00	0.00	0.00	Greyson LD28-760 BI

Noble Energy Inc

Planning Report

Database:	EDM01P	Local Co-ordinate Reference:	Well Greyson LD28-760
Company:	Northern Region Drilling - Working	TVD Reference:	WELL @ 4878.0ft (Original Well Elev)
Project:	Wattenberg Field	MD Reference:	WELL @ 4878.0ft (Original Well Elev)
Site:	LD (09N-58W)	North Reference:	Grid
Well:	Greyson LD28-760	Survey Calculation Method:	Minimum Curvature
Wellbore:	Original Drilling		
Design:	APD - Rev 0		

Planned Survey									
Measured Depth (ft)	Inclination (°)	Azimuth (°)	Vertical Depth (ft)	+N/-S (ft)	+E/-W (ft)	Vertical Section (ft)	Dogleg Rate (°/100usft)	Build Rate (°/100usft)	Turn Rate (°/100usft)
0.0	0.00	0.00	0.0	0.0	0.0	0.0	0.00	0.00	0.00
50.0	0.00	0.00	50.0	0.0	0.0	0.0	0.00	0.00	0.00
100.0	0.00	0.00	100.0	0.0	0.0	0.0	0.00	0.00	0.00
150.0	0.00	0.00	150.0	0.0	0.0	0.0	0.00	0.00	0.00
200.0	0.00	0.00	200.0	0.0	0.0	0.0	0.00	0.00	0.00
250.0	0.00	0.00	250.0	0.0	0.0	0.0	0.00	0.00	0.00
300.0	0.00	0.00	300.0	0.0	0.0	0.0	0.00	0.00	0.00
350.0	0.00	0.00	350.0	0.0	0.0	0.0	0.00	0.00	0.00
400.0	0.00	0.00	400.0	0.0	0.0	0.0	0.00	0.00	0.00
450.0	0.00	0.00	450.0	0.0	0.0	0.0	0.00	0.00	0.00
500.0	0.00	0.00	500.0	0.0	0.0	0.0	0.00	0.00	0.00
550.0	0.00	0.00	550.0	0.0	0.0	0.0	0.00	0.00	0.00
600.0	0.00	0.00	600.0	0.0	0.0	0.0	0.00	0.00	0.00
650.0	0.00	0.00	650.0	0.0	0.0	0.0	0.00	0.00	0.00
700.0	0.00	0.00	700.0	0.0	0.0	0.0	0.00	0.00	0.00
750.0	0.00	0.00	750.0	0.0	0.0	0.0	0.00	0.00	0.00
800.0	0.00	0.00	800.0	0.0	0.0	0.0	0.00	0.00	0.00
850.0	0.00	0.00	850.0	0.0	0.0	0.0	0.00	0.00	0.00
900.0	0.00	0.00	900.0	0.0	0.0	0.0	0.00	0.00	0.00
950.0	0.00	0.00	950.0	0.0	0.0	0.0	0.00	0.00	0.00
1,000.0	0.00	0.00	1,000.0	0.0	0.0	0.0	0.00	0.00	0.00
1,050.0	0.00	0.00	1,050.0	0.0	0.0	0.0	0.00	0.00	0.00
1,100.0	0.00	0.00	1,100.0	0.0	0.0	0.0	0.00	0.00	0.00
1,150.0	0.00	0.00	1,150.0	0.0	0.0	0.0	0.00	0.00	0.00
1,200.0	0.00	0.00	1,200.0	0.0	0.0	0.0	0.00	0.00	0.00
1,250.0	0.00	0.00	1,250.0	0.0	0.0	0.0	0.00	0.00	0.00
1,300.0	0.00	0.00	1,300.0	0.0	0.0	0.0	0.00	0.00	0.00
1,350.0	0.00	0.00	1,350.0	0.0	0.0	0.0	0.00	0.00	0.00
1,400.0	0.00	0.00	1,400.0	0.0	0.0	0.0	0.00	0.00	0.00
1,450.0	0.00	0.00	1,450.0	0.0	0.0	0.0	0.00	0.00	0.00
1,500.0	0.00	0.00	1,500.0	0.0	0.0	0.0	0.00	0.00	0.00
KOP - Start Build 2.00									
1,550.0	1.00	149.44	1,550.0	-0.4	0.2	-0.4	2.00	2.00	0.00
1,600.0	2.00	149.44	1,600.0	-1.5	0.9	-1.5	2.00	2.00	0.00
1,650.0	3.00	149.44	1,649.9	-3.4	2.0	-3.3	2.00	2.00	0.00
1,700.0	4.00	149.44	1,699.8	-6.0	3.5	-5.8	2.00	2.00	0.00
1,750.0	5.00	149.44	1,749.7	-9.4	5.5	-9.1	2.00	2.00	0.00
1,800.0	6.00	149.44	1,799.5	-13.5	8.0	-13.1	2.00	2.00	0.00
1,850.0	7.00	149.44	1,849.1	-18.4	10.9	-17.9	2.00	2.00	0.00
1,900.0	8.00	149.44	1,898.7	-24.0	14.2	-23.3	2.00	2.00	0.00
1,950.0	9.00	149.44	1,948.2	-30.4	17.9	-29.5	2.00	2.00	0.00
2,000.0	10.00	149.44	1,997.5	-37.5	22.1	-36.4	2.00	2.00	0.00
2,050.0	11.00	149.44	2,046.6	-45.3	26.8	-44.0	2.00	2.00	0.00
2,098.9	11.98	149.44	2,094.5	-53.7	31.7	-52.2	2.00	2.00	0.00
2,100.0	11.98	149.44	2,095.6	-53.9	31.8	-52.4	0.00	0.00	0.00
2,150.0	11.98	149.44	2,144.5	-62.8	37.1	-61.1	0.00	0.00	0.00
2,200.0	11.98	149.44	2,193.5	-71.8	42.4	-69.7	0.00	0.00	0.00
2,250.0	11.98	149.44	2,242.4	-80.7	47.7	-78.4	0.00	0.00	0.00
2,300.0	11.98	149.44	2,291.3	-89.6	52.9	-87.1	0.00	0.00	0.00
2,350.0	11.98	149.44	2,340.2	-98.6	58.2	-95.8	0.00	0.00	0.00
2,400.0	11.98	149.44	2,389.1	-107.5	63.5	-104.5	0.00	0.00	0.00
2,416.3	11.98	149.44	2,405.0	-110.4	65.2	-107.3	0.00	0.00	0.00
PIERRE									
2,450.0	11.98	149.44	2,438.0	-116.5	68.8	-113.2	0.00	0.00	0.00

Noble Energy Inc

Planning Report

Database:	EDM01P	Local Co-ordinate Reference:	Well Greyson LD28-760
Company:	Northern Region Drilling - Working	TVD Reference:	WELL @ 4878.0ft (Original Well Elev)
Project:	Wattenberg Field	MD Reference:	WELL @ 4878.0ft (Original Well Elev)
Site:	LD (09N-58W)	North Reference:	Grid
Well:	Greyson LD28-760	Survey Calculation Method:	Minimum Curvature
Wellbore:	Original Drilling		
Design:	APD - Rev 0		

Planned Survey									
Measured Depth (ft)	Inclination (°)	Azimuth (°)	Vertical Depth (ft)	+N/-S (ft)	+E/-W (ft)	Vertical Section (ft)	Dogleg Rate (°/100usft)	Build Rate (°/100usft)	Turn Rate (°/100usft)
2,500.0	11.98	149.44	2,486.9	-125.4	74.0	-121.8	0.00	0.00	0.00
2,550.0	11.98	149.44	2,535.8	-134.3	79.3	-130.5	0.00	0.00	0.00
2,600.0	11.98	149.44	2,584.7	-143.3	84.6	-139.2	0.00	0.00	0.00
2,650.0	11.98	149.44	2,633.7	-152.2	89.9	-147.9	0.00	0.00	0.00
2,700.0	11.98	149.44	2,682.6	-161.1	95.1	-156.6	0.00	0.00	0.00
2,750.0	11.98	149.44	2,731.5	-170.1	100.4	-165.2	0.00	0.00	0.00
2,800.0	11.98	149.44	2,780.4	-179.0	105.7	-173.9	0.00	0.00	0.00
2,850.0	11.98	149.44	2,829.3	-187.9	111.0	-182.6	0.00	0.00	0.00
2,900.0	11.98	149.44	2,878.2	-196.9	116.2	-191.3	0.00	0.00	0.00
2,950.0	11.98	149.44	2,927.1	-205.8	121.5	-200.0	0.00	0.00	0.00
3,000.0	11.98	149.44	2,976.0	-214.7	126.8	-208.6	0.00	0.00	0.00
3,050.0	11.98	149.44	3,024.9	-223.7	132.1	-217.3	0.00	0.00	0.00
3,100.0	11.98	149.44	3,073.9	-232.6	137.3	-226.0	0.00	0.00	0.00
3,150.0	11.98	149.44	3,122.8	-241.5	142.6	-234.7	0.00	0.00	0.00
3,200.0	11.98	149.44	3,171.7	-250.5	147.9	-243.4	0.00	0.00	0.00
3,250.0	11.98	149.44	3,220.6	-259.4	153.2	-252.1	0.00	0.00	0.00
3,300.0	11.98	149.44	3,269.5	-268.3	158.5	-260.7	0.00	0.00	0.00
3,350.0	11.98	149.44	3,318.4	-277.3	163.7	-269.4	0.00	0.00	0.00
3,354.7	11.98	149.44	3,323.0	-278.1	164.2	-270.2	0.00	0.00	0.00
PARKMAN									
3,400.0	11.98	149.44	3,367.3	-286.2	169.0	-278.1	0.00	0.00	0.00
3,450.0	11.98	149.44	3,416.2	-295.2	174.3	-286.8	0.00	0.00	0.00
3,500.0	11.98	149.44	3,465.2	-304.1	179.6	-295.5	0.00	0.00	0.00
3,550.0	11.98	149.44	3,514.1	-313.0	184.8	-304.1	0.00	0.00	0.00
3,600.0	11.98	149.44	3,563.0	-322.0	190.1	-312.8	0.00	0.00	0.00
3,650.0	11.98	149.44	3,611.9	-330.9	195.4	-321.5	0.00	0.00	0.00
3,700.0	11.98	149.44	3,660.8	-339.8	200.7	-330.2	0.00	0.00	0.00
3,750.0	11.98	149.44	3,709.7	-348.8	205.9	-338.9	0.00	0.00	0.00
3,800.0	11.98	149.44	3,758.6	-357.7	211.2	-347.6	0.00	0.00	0.00
3,850.0	11.98	149.44	3,807.5	-366.6	216.5	-356.2	0.00	0.00	0.00
3,900.0	11.98	149.44	3,856.4	-375.6	221.8	-364.9	0.00	0.00	0.00
3,950.0	11.98	149.44	3,905.4	-384.5	227.0	-373.6	0.00	0.00	0.00
4,000.0	11.98	149.44	3,954.3	-393.4	232.3	-382.3	0.00	0.00	0.00
4,044.7	11.98	149.44	3,998.0	-401.4	237.0	-390.0	0.00	0.00	0.00
SUSSEX									
4,050.0	11.98	149.44	4,003.2	-402.4	237.6	-391.0	0.00	0.00	0.00
4,100.0	11.98	149.44	4,052.1	-411.3	242.9	-399.6	0.00	0.00	0.00
4,150.0	11.98	149.44	4,101.0	-420.2	248.1	-408.3	0.00	0.00	0.00
4,200.0	11.98	149.44	4,149.9	-429.2	253.4	-417.0	0.00	0.00	0.00
4,250.0	11.98	149.44	4,198.8	-438.1	258.7	-425.7	0.00	0.00	0.00
4,300.0	11.98	149.44	4,247.7	-447.0	264.0	-434.4	0.00	0.00	0.00
4,350.0	11.98	149.44	4,296.6	-456.0	269.2	-443.1	0.00	0.00	0.00
4,400.0	11.98	149.44	4,345.6	-464.9	274.5	-451.7	0.00	0.00	0.00
4,435.7	11.98	149.44	4,380.5	-471.3	278.3	-457.9	0.00	0.00	0.00
Start Drop -2.00									
4,450.0	11.69	149.44	4,394.5	-473.8	279.8	-460.4	2.00	-2.00	0.00
4,500.0	10.69	149.44	4,443.5	-482.2	284.7	-468.5	2.00	-2.00	0.00
4,514.7	10.40	149.44	4,458.0	-484.5	286.1	-470.8	2.00	-2.00	0.00
SHANNON									
4,550.0	9.69	149.44	4,492.7	-489.8	289.2	-475.9	2.00	-2.00	0.00
4,600.0	8.69	149.44	4,542.1	-496.7	293.3	-482.6	2.00	-2.00	0.00
4,650.0	7.69	149.44	4,591.6	-502.8	296.9	-488.6	2.00	-2.00	0.00
4,700.0	6.69	149.44	4,641.2	-508.2	300.1	-493.8	2.00	-2.00	0.00

Noble Energy Inc

Planning Report

Database:	EDM01P	Local Co-ordinate Reference:	Well Greyson LD28-760
Company:	Northern Region Drilling - Working	TVD Reference:	WELL @ 4878.0ft (Original Well Elev)
Project:	Wattenberg Field	MD Reference:	WELL @ 4878.0ft (Original Well Elev)
Site:	LD (09N-58W)	North Reference:	Grid
Well:	Greyson LD28-760	Survey Calculation Method:	Minimum Curvature
Wellbore:	Original Drilling		
Design:	APD - Rev 0		

Planned Survey									
Measured Depth (ft)	Inclination (°)	Azimuth (°)	Vertical Depth (ft)	+N/-S (ft)	+E/-W (ft)	Vertical Section (ft)	Dogleg Rate (°/100usft)	Build Rate (°/100usft)	Turn Rate (°/100usft)
4,750.0	5.69	149.44	4,690.9	-512.8	302.8	-498.3	2.00	-2.00	0.00
4,800.0	4.69	149.44	4,740.7	-516.7	305.1	-502.1	2.00	-2.00	0.00
4,850.0	3.69	149.44	4,790.6	-519.9	307.0	-505.1	2.00	-2.00	0.00
4,900.0	2.69	149.44	4,840.5	-522.3	308.4	-507.5	2.00	-2.00	0.00
4,950.0	1.69	149.44	4,890.4	-523.9	309.4	-509.1	2.00	-2.00	0.00
5,000.0	0.69	149.44	4,940.4	-524.8	309.9	-509.9	2.00	-2.00	0.00
5,034.6	0.00	0.00	4,975.0	-525.0	310.0	-510.1	2.00	-2.00	0.00
5,050.0	0.00	0.00	4,990.4	-525.0	310.0	-510.1	0.00	0.00	0.00
5,099.6	0.00	0.00	5,040.0	-525.0	310.0	-510.1	0.00	0.00	0.00
TEEPEE BUTTES									
5,100.0	0.00	0.00	5,040.4	-525.0	310.0	-510.1	0.00	0.00	0.00
5,150.0	0.00	0.00	5,090.4	-525.0	310.0	-510.1	0.00	0.00	0.00
5,200.0	0.00	0.00	5,140.4	-525.0	310.0	-510.1	0.00	0.00	0.00
5,250.0	0.00	0.00	5,190.4	-525.0	310.0	-510.1	0.00	0.00	0.00
5,285.1	0.00	0.00	5,225.5	-525.0	310.0	-510.1	0.00	0.00	0.00
KOP #2 - Start Build 9.00									
5,300.0	1.34	358.74	5,240.4	-524.8	310.0	-509.9	9.00	9.00	0.00
5,350.0	5.84	358.74	5,290.3	-521.7	309.9	-506.8	9.00	9.00	0.00
5,400.0	10.34	358.74	5,339.8	-514.7	309.8	-499.8	9.00	9.00	0.00
5,450.0	14.84	358.74	5,388.6	-503.8	309.5	-488.9	9.00	9.00	0.00
5,500.0	19.34	358.74	5,436.4	-489.1	309.2	-474.3	9.00	9.00	0.00
5,550.0	23.84	358.74	5,482.9	-470.7	308.8	-455.9	9.00	9.00	0.00
5,600.0	28.34	358.74	5,527.7	-448.7	308.3	-434.0	9.00	9.00	0.00
5,650.0	32.84	358.74	5,570.8	-423.3	307.8	-408.6	9.00	9.00	0.00
5,700.0	37.34	358.74	5,611.7	-394.5	307.1	-379.9	9.00	9.00	0.00
5,750.0	41.84	358.74	5,650.2	-362.7	306.4	-348.1	9.00	9.00	0.00
5,800.0	46.34	358.74	5,686.1	-327.9	305.7	-313.4	9.00	9.00	0.00
5,850.0	50.84	358.74	5,719.2	-290.4	304.9	-276.0	9.00	9.00	0.00
5,872.4	52.86	358.74	5,733.0	-272.8	304.5	-258.4	9.00	9.00	0.00
SHARON SPRINGS									
5,900.0	55.34	358.74	5,749.2	-250.5	304.0	-236.2	9.00	9.00	0.00
5,908.6	56.11	358.74	5,754.0	-243.4	303.8	-229.1	9.01	9.01	0.00
NIO A CHALK									
5,950.0	59.84	358.74	5,776.0	-208.3	303.0	-194.1	9.00	9.00	0.00
5,960.2	60.76	358.74	5,781.0	-199.4	302.9	-185.2	9.01	9.01	0.00
NIO A MARL									
6,000.0	64.34	358.74	5,799.4	-164.1	302.1	-150.0	9.00	9.00	0.00
6,050.0	68.84	358.74	5,819.2	-118.2	301.1	-104.2	9.00	9.00	0.00
6,100.0	73.34	358.74	5,835.4	-71.0	300.0	-57.0	9.00	9.00	0.00
6,120.6	75.20	358.74	5,841.0	-51.1	299.6	-37.2	9.01	9.01	0.00
NIO B CHALK									
6,150.0	77.84	358.74	5,847.9	-22.6	299.0	-8.7	9.00	9.00	0.00
6,200.0	82.34	358.74	5,856.5	26.7	297.9	40.4	9.00	9.00	0.00
6,229.5	85.00	358.74	5,859.7	56.0	297.2	69.6	9.00	9.00	0.00
Start 75.0 hold at 6229.5 MD - 7" Casing @ 6229.5' MD									
6,250.0	85.00	358.74	5,861.5	76.4	296.8	90.0	0.01	0.01	0.00
6,300.0	85.00	358.74	5,865.8	126.2	295.7	139.7	0.00	0.00	0.00
6,304.5	85.00	358.74	5,866.2	130.7	295.6	144.2	0.00	0.00	0.00
Start Build 9.00									
6,350.0	89.09	358.74	5,868.6	176.1	294.6	189.5	8.99	8.99	0.00
6,357.9	89.80	358.74	5,868.7	183.9	294.4	197.4	9.01	9.01	0.00
6,400.0	89.80	358.74	5,868.8	226.1	293.5	239.4	0.00	0.00	0.00
6,450.0	89.80	358.74	5,869.0	276.1	292.4	289.3	0.00	0.00	0.00

Noble Energy Inc

Planning Report

Database:	EDM01P	Local Co-ordinate Reference:	Well Greyson LD28-760
Company:	Northern Region Drilling - Working	TVD Reference:	WELL @ 4878.0ft (Original Well Elev)
Project:	Wattenberg Field	MD Reference:	WELL @ 4878.0ft (Original Well Elev)
Site:	LD (09N-58W)	North Reference:	Grid
Well:	Greyson LD28-760	Survey Calculation Method:	Minimum Curvature
Wellbore:	Original Drilling		
Design:	APD - Rev 0		

Planned Survey									
Measured Depth (ft)	Inclination (°)	Azimuth (°)	Vertical Depth (ft)	+N/-S (ft)	+E/-W (ft)	Vertical Section (ft)	Dogleg Rate (°/100usft)	Build Rate (°/100usft)	Turn Rate (°/100usft)
6,500.0	89.80	358.74	5,869.2	326.1	291.3	339.2	0.00	0.00	0.00
6,550.0	89.80	358.74	5,869.3	376.0	290.2	389.0	0.00	0.00	0.00
6,600.0	89.80	358.74	5,869.5	426.0	289.1	438.9	0.00	0.00	0.00
6,650.0	89.80	358.74	5,869.7	476.0	288.0	488.8	0.00	0.00	0.00
6,700.0	89.80	358.74	5,869.9	526.0	286.9	538.7	0.00	0.00	0.00
6,750.0	89.80	358.74	5,870.0	576.0	285.8	588.6	0.00	0.00	0.00
6,800.0	89.80	358.74	5,870.2	626.0	284.7	638.5	0.00	0.00	0.00
6,850.0	89.80	358.74	5,870.4	676.0	283.6	688.4	0.00	0.00	0.00
6,900.0	89.80	358.74	5,870.6	726.0	282.5	738.2	0.00	0.00	0.00
6,950.0	89.80	358.74	5,870.7	775.9	281.4	788.1	0.00	0.00	0.00
7,000.0	89.80	358.74	5,870.9	825.9	280.3	838.0	0.00	0.00	0.00
7,027.7	89.80	358.74	5,871.0	853.6	279.7	865.6	0.00	0.00	0.00
NIO B MARL									
7,050.0	89.80	358.74	5,871.1	875.9	279.3	887.9	0.00	0.00	0.00
7,100.0	89.80	358.74	5,871.3	925.9	278.2	937.8	0.00	0.00	0.00
7,150.0	89.80	358.74	5,871.4	975.9	277.1	987.7	0.00	0.00	0.00
7,200.0	89.80	358.74	5,871.6	1,025.9	276.0	1,037.5	0.00	0.00	0.00
7,250.0	89.80	358.74	5,871.8	1,075.9	274.9	1,087.4	0.00	0.00	0.00
7,300.0	89.80	358.74	5,872.0	1,125.9	273.8	1,137.3	0.00	0.00	0.00
7,350.0	89.80	358.74	5,872.1	1,175.8	272.7	1,187.2	0.00	0.00	0.00
7,400.0	89.80	358.74	5,872.3	1,225.8	271.6	1,237.1	0.00	0.00	0.00
7,450.0	89.80	358.74	5,872.5	1,275.8	270.5	1,287.0	0.00	0.00	0.00
7,500.0	89.80	358.74	5,872.6	1,325.8	269.4	1,336.8	0.00	0.00	0.00
7,550.0	89.80	358.74	5,872.8	1,375.8	268.3	1,386.7	0.00	0.00	0.00
7,600.0	89.80	358.74	5,873.0	1,425.8	267.2	1,436.6	0.00	0.00	0.00
7,650.0	89.80	358.74	5,873.2	1,475.8	266.1	1,486.5	0.00	0.00	0.00
7,700.0	89.80	358.74	5,873.3	1,525.8	265.0	1,536.4	0.00	0.00	0.00
7,750.0	89.80	358.74	5,873.5	1,575.7	263.9	1,586.3	0.00	0.00	0.00
7,800.0	89.80	358.74	5,873.7	1,625.7	262.8	1,636.1	0.00	0.00	0.00
7,850.0	89.80	358.74	5,873.9	1,675.7	261.7	1,686.0	0.00	0.00	0.00
7,900.0	89.80	358.74	5,874.0	1,725.7	260.6	1,735.9	0.00	0.00	0.00
7,950.0	89.80	358.74	5,874.2	1,775.7	259.5	1,785.8	0.00	0.00	0.00
8,000.0	89.80	358.74	5,874.4	1,825.7	258.4	1,835.7	0.00	0.00	0.00
8,050.0	89.80	358.74	5,874.6	1,875.7	257.3	1,885.6	0.00	0.00	0.00
8,100.0	89.80	358.74	5,874.7	1,925.7	256.2	1,935.4	0.00	0.00	0.00
8,150.0	89.80	358.74	5,874.9	1,975.6	255.1	1,985.3	0.00	0.00	0.00
8,200.0	89.80	358.74	5,875.1	2,025.6	254.0	2,035.2	0.00	0.00	0.00
8,250.0	89.80	358.74	5,875.3	2,075.6	252.9	2,085.1	0.00	0.00	0.00
8,300.0	89.80	358.74	5,875.4	2,125.6	251.8	2,135.0	0.00	0.00	0.00
8,350.0	89.80	358.74	5,875.6	2,175.6	250.7	2,184.9	0.00	0.00	0.00
8,400.0	89.80	358.74	5,875.8	2,225.6	249.6	2,234.7	0.00	0.00	0.00
8,450.0	89.80	358.74	5,876.0	2,275.6	248.5	2,284.6	0.00	0.00	0.00
8,500.0	89.80	358.74	5,876.1	2,325.6	247.4	2,334.5	0.00	0.00	0.00
8,550.0	89.80	358.74	5,876.3	2,375.6	246.3	2,384.4	0.00	0.00	0.00
8,600.0	89.80	358.74	5,876.5	2,425.5	245.2	2,434.3	0.00	0.00	0.00
8,650.0	89.80	358.74	5,876.7	2,475.5	244.1	2,484.2	0.00	0.00	0.00
8,700.0	89.80	358.74	5,876.8	2,525.5	243.0	2,534.0	0.00	0.00	0.00
8,750.0	89.80	358.74	5,877.0	2,575.5	241.9	2,583.9	0.00	0.00	0.00
8,800.0	89.80	358.74	5,877.2	2,625.5	240.9	2,633.8	0.00	0.00	0.00
8,850.0	89.80	358.74	5,877.4	2,675.5	239.8	2,683.7	0.00	0.00	0.00
8,900.0	89.80	358.74	5,877.5	2,725.5	238.7	2,733.6	0.00	0.00	0.00
8,950.0	89.80	358.74	5,877.7	2,775.5	237.6	2,783.5	0.00	0.00	0.00
9,000.0	89.80	358.74	5,877.9	2,825.4	236.5	2,833.3	0.00	0.00	0.00
9,050.0	89.80	358.74	5,878.1	2,875.4	235.4	2,883.2	0.00	0.00	0.00

Noble Energy Inc

Planning Report

Database:	EDM01P	Local Co-ordinate Reference:	Well Greyson LD28-760
Company:	Northern Region Drilling - Working	TVD Reference:	WELL @ 4878.0ft (Original Well Elev)
Project:	Wattenberg Field	MD Reference:	WELL @ 4878.0ft (Original Well Elev)
Site:	LD (09N-58W)	North Reference:	Grid
Well:	Greyson LD28-760	Survey Calculation Method:	Minimum Curvature
Wellbore:	Original Drilling		
Design:	APD - Rev 0		

Planned Survey										
Measured Depth (ft)	Inclination (°)	Azimuth (°)	Vertical Depth (ft)	+N/-S (ft)	+E/-W (ft)	Vertical Section (ft)	Dogleg Rate (°/100usft)	Build Rate (°/100usft)	Turn Rate (°/100usft)	
9,100.0	89.80	358.74	5,878.2	2,925.4	234.3	2,933.1	0.00	0.00	0.00	
9,150.0	89.80	358.74	5,878.4	2,975.4	233.2	2,983.0	0.00	0.00	0.00	
9,200.0	89.80	358.74	5,878.6	3,025.4	232.1	3,032.9	0.00	0.00	0.00	
9,250.0	89.80	358.74	5,878.8	3,075.4	231.0	3,082.8	0.00	0.00	0.00	
9,300.0	89.80	358.74	5,878.9	3,125.4	229.9	3,132.7	0.00	0.00	0.00	
9,350.0	89.80	358.74	5,879.1	3,175.4	228.8	3,182.5	0.00	0.00	0.00	
9,400.0	89.80	358.74	5,879.3	3,225.3	227.7	3,232.4	0.00	0.00	0.00	
9,450.0	89.80	358.74	5,879.5	3,275.3	226.6	3,282.3	0.00	0.00	0.00	
9,500.0	89.80	358.74	5,879.6	3,325.3	225.5	3,332.2	0.00	0.00	0.00	
9,550.0	89.80	358.74	5,879.8	3,375.3	224.4	3,382.1	0.00	0.00	0.00	
9,600.0	89.80	358.74	5,880.0	3,425.3	223.3	3,432.0	0.00	0.00	0.00	
9,650.0	89.80	358.74	5,880.2	3,475.3	222.2	3,481.8	0.00	0.00	0.00	
9,700.0	89.80	358.74	5,880.3	3,525.3	221.1	3,531.7	0.00	0.00	0.00	
9,750.0	89.80	358.74	5,880.5	3,575.3	220.0	3,581.6	0.00	0.00	0.00	
9,800.0	89.80	358.74	5,880.7	3,625.2	218.9	3,631.5	0.00	0.00	0.00	
9,850.0	89.80	358.74	5,880.9	3,675.2	217.8	3,681.4	0.00	0.00	0.00	
9,900.0	89.80	358.74	5,881.0	3,725.2	216.7	3,731.3	0.00	0.00	0.00	
9,950.0	89.80	358.74	5,881.2	3,775.2	215.6	3,781.1	0.00	0.00	0.00	
10,000.0	89.80	358.74	5,881.4	3,825.2	214.5	3,831.0	0.00	0.00	0.00	
10,050.0	89.80	358.74	5,881.5	3,875.2	213.4	3,880.9	0.00	0.00	0.00	
10,100.0	89.80	358.74	5,881.7	3,925.2	212.3	3,930.8	0.00	0.00	0.00	
10,150.0	89.80	358.74	5,881.9	3,975.2	211.2	3,980.7	0.00	0.00	0.00	
10,200.0	89.80	358.74	5,882.1	4,025.1	210.1	4,030.6	0.00	0.00	0.00	
10,250.0	89.80	358.74	5,882.2	4,075.1	209.0	4,080.4	0.00	0.00	0.00	
10,300.0	89.80	358.74	5,882.4	4,125.1	207.9	4,130.3	0.00	0.00	0.00	
10,350.0	89.80	358.74	5,882.6	4,175.1	206.8	4,180.2	0.00	0.00	0.00	
10,400.0	89.80	358.74	5,882.8	4,225.1	205.7	4,230.1	0.00	0.00	0.00	
10,450.0	89.80	358.74	5,882.9	4,275.1	204.6	4,280.0	0.00	0.00	0.00	
10,500.0	89.80	358.74	5,883.1	4,325.1	203.5	4,329.9	0.00	0.00	0.00	
10,550.0	89.80	358.74	5,883.3	4,375.1	202.5	4,379.7	0.00	0.00	0.00	
10,551.4	89.80	358.74	5,883.3	4,376.4	202.4	4,381.1	0.00	0.00	0.00	
TD at 10551.4 - Greyson LD28-760 BHL 330'FNL, 1980'FWL										

Design Targets									
Target Name	Dip Angle (°)	Dip Dir. (°)	TVD (ft)	+N/-S (ft)	+E/-W (ft)	Northing (usft)	Easting (usft)	Latitude	Longitude
- hit/miss target									
- Shape									
Greyson LD28-760 BHL	0.00	0.00	5,883.3	4,376.5	202.4	1,512,374.43	3,451,353.20	40.728480	-103.871420
- plan hits target center									
- Point									

Casing Points					
Measured Depth (ft)	Vertical Depth (ft)	Name	Casing Diameter (")	Hole Diameter (")	
6,229.5	5,859.7	7" Casing @ 6229.5' MD	7	8-3/4	

Noble Energy Inc

Planning Report

Database:	EDM01P	Local Co-ordinate Reference:	Well Greyson LD28-760
Company:	Northern Region Drilling - Working	TVD Reference:	WELL @ 4878.0ft (Original Well Elev)
Project:	Wattenberg Field	MD Reference:	WELL @ 4878.0ft (Original Well Elev)
Site:	LD (09N-58W)	North Reference:	Grid
Well:	Greyson LD28-760	Survey Calculation Method:	Minimum Curvature
Wellbore:	Original Drilling		
Design:	APD - Rev 0		

Formations					
Measured Depth (ft)	Vertical Depth (ft)	Name	Lithology	Dip (°)	Dip Direction (°)
2,416.3	2,405.0	PIERRE		0.00	
3,354.7	3,323.0	PARKMAN		0.00	
4,044.7	3,998.0	SUSSEX		0.00	
4,514.7	4,458.0	SHANNON		0.00	
5,099.6	5,040.0	TEEPEE BUTTES		0.00	
5,872.4	5,733.0	SHARON SPRINGS		0.00	
5,908.6	5,754.0	NIO A CHALK		0.00	
5,960.2	5,781.0	NIO A MARL		0.00	
6,120.6	5,841.0	NIO B CHALK		0.00	
7,027.7	5,871.0	NIO B MARL		0.00	

Plan Annotations				
Measured Depth (ft)	Vertical Depth (ft)	Local Coordinates		Comment
		+N/-S (ft)	+E/-W (ft)	
1,500.0	1,500.0	0.0	0.0	KOP - Start Build 2.00
4,435.7	4,380.5	-471.3	278.3	Start Drop -2.00
5,285.1	5,225.5	-525.0	310.0	KOP #2 - Start Build 9.00
6,229.5	5,859.7	56.0	297.2	Start 75.0 hold at 6229.5 MD
6,304.5	5,866.2	130.7	295.6	Start Build 9.00
10,551.4	5,883.3	4,376.4	202.4	TD at 10551.4

Northern Region Drilling - Working

Wattenberg Field

LD (09N-58W)

Greyson LD28-760

Original Drilling

APD - Rev 0

Anticollision Summary Report

05 March, 2015

Noble Energy Inc
Anticollision Summary Report

Company:	Northern Region Drilling - Working	Local Co-ordinate Reference:	Well Greyson LD28-760
Project:	Wattenberg Field	TVD Reference:	WELL @ 4878.0ft (Original Well Elev)
Reference Site:	LD (09N-58W)	MD Reference:	WELL @ 4878.0ft (Original Well Elev)
Site Error:	0.0 ft	North Reference:	Grid
Reference Well:	Greyson LD28-760	Survey Calculation Method:	Minimum Curvature
Well Error:	0.0 ft	Output errors are at	2.00 sigma
Reference Wellbore	Original Drilling	Database:	EDM01P
Reference Design:	APD - Rev 0	Offset TVD Reference:	Offset Datum

Reference	APD - Rev 0		
Filter type:	NO GLOBAL FILTER: Using user defined selection & filtering criteria		
Interpolation Method:	MD Interval 100.0ft	Error Model:	ISCWSA
Depth Range:	Unlimited	Scan Method:	Closest Approach 3D
Results Limited by:	Maximum center-center distance of 10,000.0 ft	Error Surface:	Elliptical Conic
Warning Levels Evaluated at:	2.00 Sigma	Casing Method:	Not applied

Survey Tool Program	Date	3/5/2015		
From (ft)	To (ft)	Survey (Wellbore)	Tool Name	Description
0.0	10,551.4	APD - Rev 0 (Original Drilling)	MWD	MWD - Standard

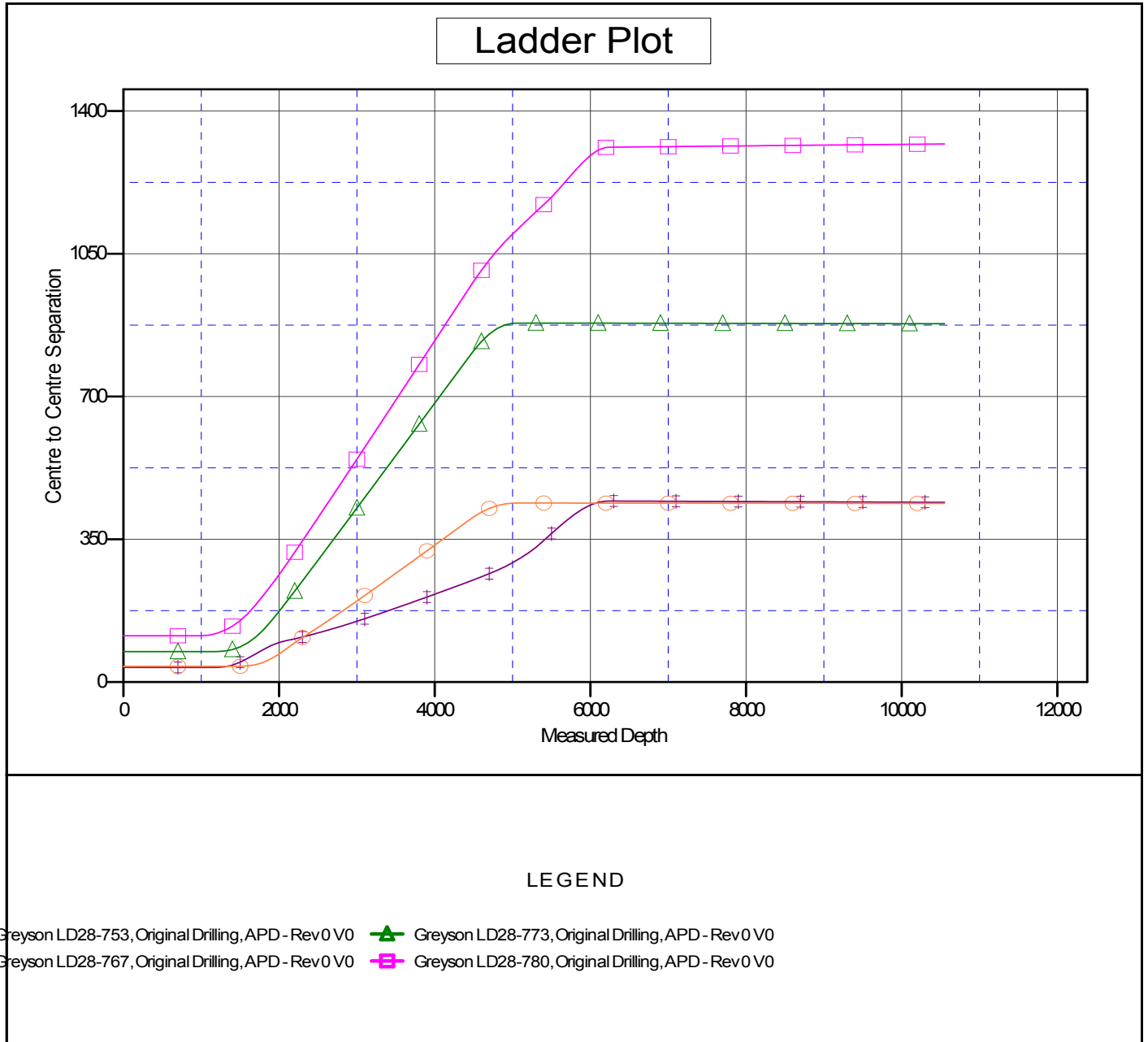
Summary						
Site Name	Reference Measured Depth (ft)	Offset Measured Depth (ft)	Distance Between Centres (ft)	Distance Between Ellipses (ft)	Separation Factor	Warning
Offset Well - Wellbore - Design						
LD (09N-58W)						
Greyson LD28-753 - Original Drilling - APD - Rev 0	1,200.0	1,199.0	36.0	30.9	7.048	CC, ES
Greyson LD28-753 - Original Drilling - APD - Rev 0	10,551.4	10,550.3	440.7	264.7	2.504	SF
Greyson LD28-767 - Original Drilling - APD - Rev 0	1,500.0	1,500.0	38.8	32.3	6.004	CC, ES
Greyson LD28-767 - Original Drilling - APD - Rev 0	10,551.4	10,545.0	437.9	261.7	2.485	SF
Greyson LD28-773 - Original Drilling - APD - Rev 0	1,166.3	1,167.3	74.8	69.9	15.070	CC
Greyson LD28-773 - Original Drilling - APD - Rev 0	1,200.0	1,201.0	74.8	69.7	14.625	ES
Greyson LD28-773 - Original Drilling - APD - Rev 0	10,551.4	10,574.8	878.7	702.8	4.997	SF
Greyson LD28-780 - Original Drilling - APD - Rev 0	966.3	967.3	113.7	109.6	27.943	CC
Greyson LD28-780 - Original Drilling - APD - Rev 0	1,000.0	1,000.0	113.7	109.4	26.956	ES
Greyson LD28-780 - Original Drilling - APD - Rev 0	10,551.4	10,591.3	1,319.4	1,144.7	7.555	SF

Noble Energy Inc
Anticollision Summary Report

Company:	Northern Region Drilling - Working	Local Co-ordinate Reference:	Well Greyson LD28-760
Project:	Wattenberg Field	TVD Reference:	WELL @ 4878.0ft (Original Well Elev)
Reference Site:	LD (09N-58W)	MD Reference:	WELL @ 4878.0ft (Original Well Elev)
Site Error:	0.0 ft	North Reference:	Grid
Reference Well:	Greyson LD28-760	Survey Calculation Method:	Minimum Curvature
Well Error:	0.0 ft	Output errors are at	2.00 sigma
Reference Wellbore	Original Drilling	Database:	EDM01P
Reference Design:	APD - Rev 0	Offset TVD Reference:	Offset Datum

Reference Depths are relative to WELL @ 4878.0ft (Original Well Elev)
Offset Depths are relative to Offset Datum
Central Meridian is -105.500000

Coordinates are relative to: Greyson LD28-760
Coordinate System is US State Plane 1983, Colorado Northern Zone
Grid Convergence at Surface is: 1.05°



Noble Energy Inc
Anticollision Summary Report

Company:	Northern Region Drilling - Working	Local Co-ordinate Reference:	Well Greyson LD28-760
Project:	Wattenberg Field	TVD Reference:	WELL @ 4878.0ft (Original Well Elev)
Reference Site:	LD (09N-58W)	MD Reference:	WELL @ 4878.0ft (Original Well Elev)
Site Error:	0.0 ft	North Reference:	Grid
Reference Well:	Greyson LD28-760	Survey Calculation Method:	Minimum Curvature
Well Error:	0.0 ft	Output errors are at	2.00 sigma
Reference Wellbore	Original Drilling	Database:	EDM01P
Reference Design:	APD - Rev 0	Offset TVD Reference:	Offset Datum

Reference Depths are relative to WELL @ 4878.0ft (Original Well Elev)
Offset Depths are relative to Offset Datum
Central Meridian is -105.500000

Coordinates are relative to: Greyson LD28-760
Coordinate System is US State Plane 1983, Colorado Northern Zone
Grid Convergence at Surface is: 1.05°

