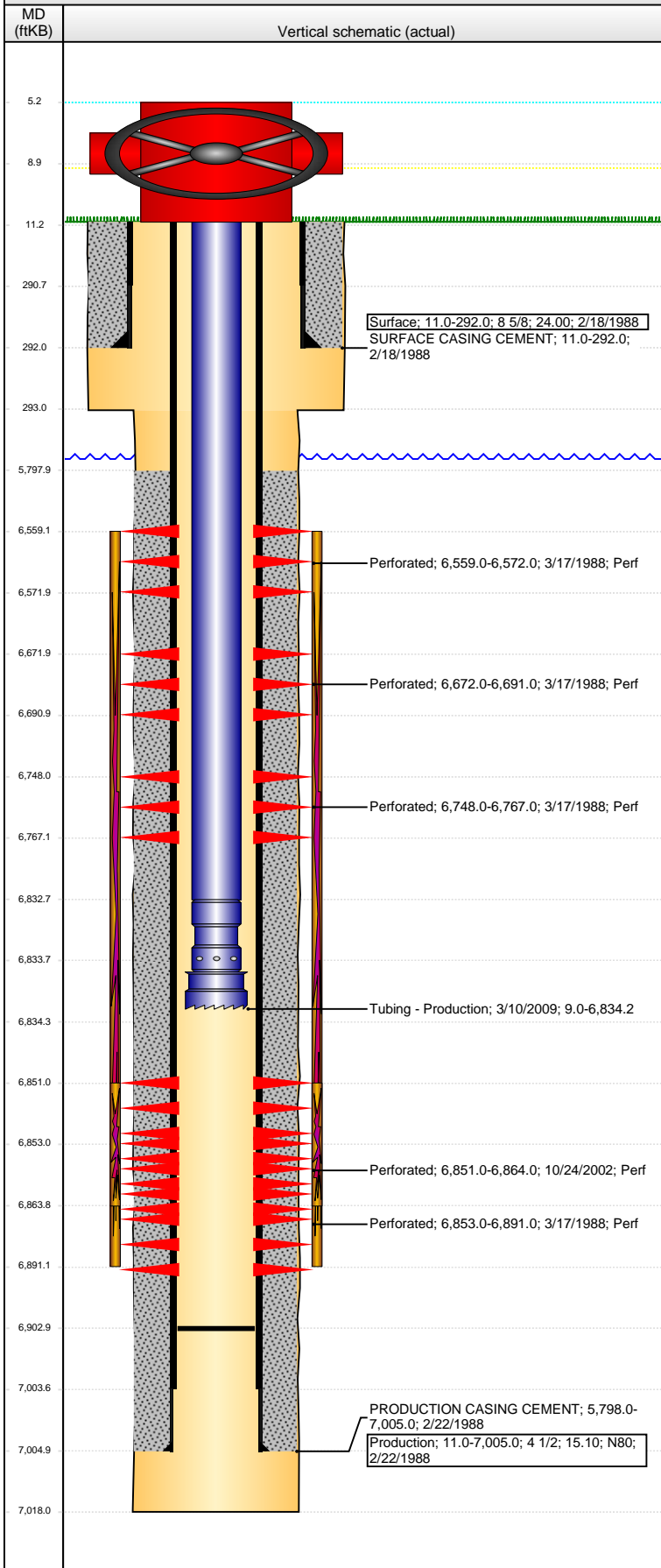


Well Name: ACHZIGER B 05-09

VERTICAL - ORIGINAL HOLE, 5/6/2015 12:30:11 PM



Well Header

API	Business Unit	District	Well Config
05-123-13827	DJ BASIN	15	VERTICAL
Original KB Elevation (ft)	KB - GL / MSL (ftKB)	Spud Date	P & A Date
4,631.00	11.00	2/18/1988	
Comment			

Directions To Well

WCR 53 & HWY 263 (8TH ST), S 0.2, W 20 FT, N 0.1, W 0.1 INTO LOCATION.

Congressional Location

Quarter 1	Quarter 2	Quarter 3	Quarter 4	Section	Township	Twntshp N...	Range	Rng E/W Dir
		NE	SE	5	5	N	64	W

Bottom Hole Location

North-South Distance (ft)	From N or S Line	East-West Distance (ft)	From E or W Line
---------------------------	------------------	-------------------------	------------------

Plug Back Total Depths

Date	Depth (ftKB)	Method	Com
2/22/1988	6,997.0	TAG	
3/10/2009	6,903.0	TUBING TALLY	TAG FILL W/ 220 JTS

Wellbore Sections

Section Des	Size (in)	Act Top, MD (ftKB)	Act Btm, MD (ftKB)
SURFACE	12 1/4	11.0	293.0
PRODUCTION	7 7/8	293.0	7,018.0

Zone Statuses

Zone Name	Status Date	Status	Fluid Type	Job
CODELL	3/22/1988	PR	Gas	DRILLING/COMPLETI...
CODELL	10/26/2002	PR	Gas	RE-FRAC, 10/14/2002...
NIOBRARA	3/22/1988	PR	Gas	DRILLING/COMPLETI...
NIOBRARA-CODELL		PR		

Casing Strings

Surface, 292.0ftKB

Casing Description	Run Date	OD (in)	Wt/Len (l...)	Grade	Top, MD (ft...)	MD (ftKB)
Surface	2/18/1988	8 5/8	24.00		11.0	292.0

Production, 7,005.0ftKB

Casing Description	Run Date	OD (in)	Wt/Len (l...)	Grade	Top, MD (ft...)	MD (ftKB)
Production	2/22/1988	4 1/2	15.10	N80	11.0	7,005.0

Cement

Description	Top Depth (ftKB)	Bottom Depth (ftKB)
SURFACE CASING CEMENT	11.0	292.0
Description	Top Depth (ftKB)	Bottom Depth (ftKB)
PRODUCTION CASING CEMENT	5,798.0	7,005.0

Tubing Strings

Tubing Description	Run Date	String...	ID (in)	Wt (lb/ft)	Grade	Len (ft)	Set De...
Tubing - Production	11/13/2002	2 3/8	1.995	4.70	N-80	6,810.00	
Tubing Description	Run Date	String...	ID (in)	Wt (lb/ft)	Grade	Len (ft)	Set De...
Tubing - Production	3/10/2009	2 3/8	1.995	4.70	J-55	6,825.17	

Tubing Components

Item Des	OD (in)	Wt (lb/ft)	Grade	Jts	Len (ft)	Btm (ftKB)	Btm (TVD) (ftKB)
Tubing	2 3/8	4.70	J-55	217	6,823.67	6,832.7	
Pump Seating Nipple	2 3/8			1	1.10	6,833.8	
Notched collar	3 1/16			1	0.40	6,834.2	

Perforation Data

Zone	Bnch/St g	Entered Shot Total	Top (ftKB)	Btm (ftKB)	Date
NIOBRARA, ORIGINAL HOLE	A	2	6,559.00	6,572.00	3/17/1988
NIOBRARA, ORIGINAL HOLE	B	5	6,672.00	6,691.00	3/17/1988
NIOBRARA, ORIGINAL HOLE	C	2	6,748.00	6,767.00	3/17/1988
CODELL, ORIGINAL HOLE		56	6,851.00	6,864.00	10/24/2002
CODELL, ORIGINAL HOLE		6	6,853.00	6,891.00	3/17/1988

Well Name: ACHZIGER B 05-09

VERTICAL - ORIGINAL HOLE, 5/6/2015 12:30:13 PM

Stimulations & Treatments

Date	Zone	Primary Job Type
3/18/1988	NIOBRARA-CODELL, ORIGINAL HOLE	DRILLING/COMPLETION - ORIGINAL
Technical Result	Tech Result Details	Tech Result Note

Comment

Date	Zone	Primary Job Type
10/25/2002	CODELL, ORIGINAL HOLE	DRILLING/COMPLETION - ORIGINAL
Technical Result	Tech Result Details	Tech Result Note

Comment

Other In Hole

Run Date	Des	OD (in)	Top (ftKB)	Btm (ftKB)

Logs

Date	Type	Top, MD (ftKB)	Btm, MD (ftKB)
2/21/1988	COMPENSATED NEUTRON	3,500.0	7,016.0
2/21/1988	INDUCTION	292.0	7,016.0
2/24/1988	CEMENT BOND	5,600.0	6,944.0

