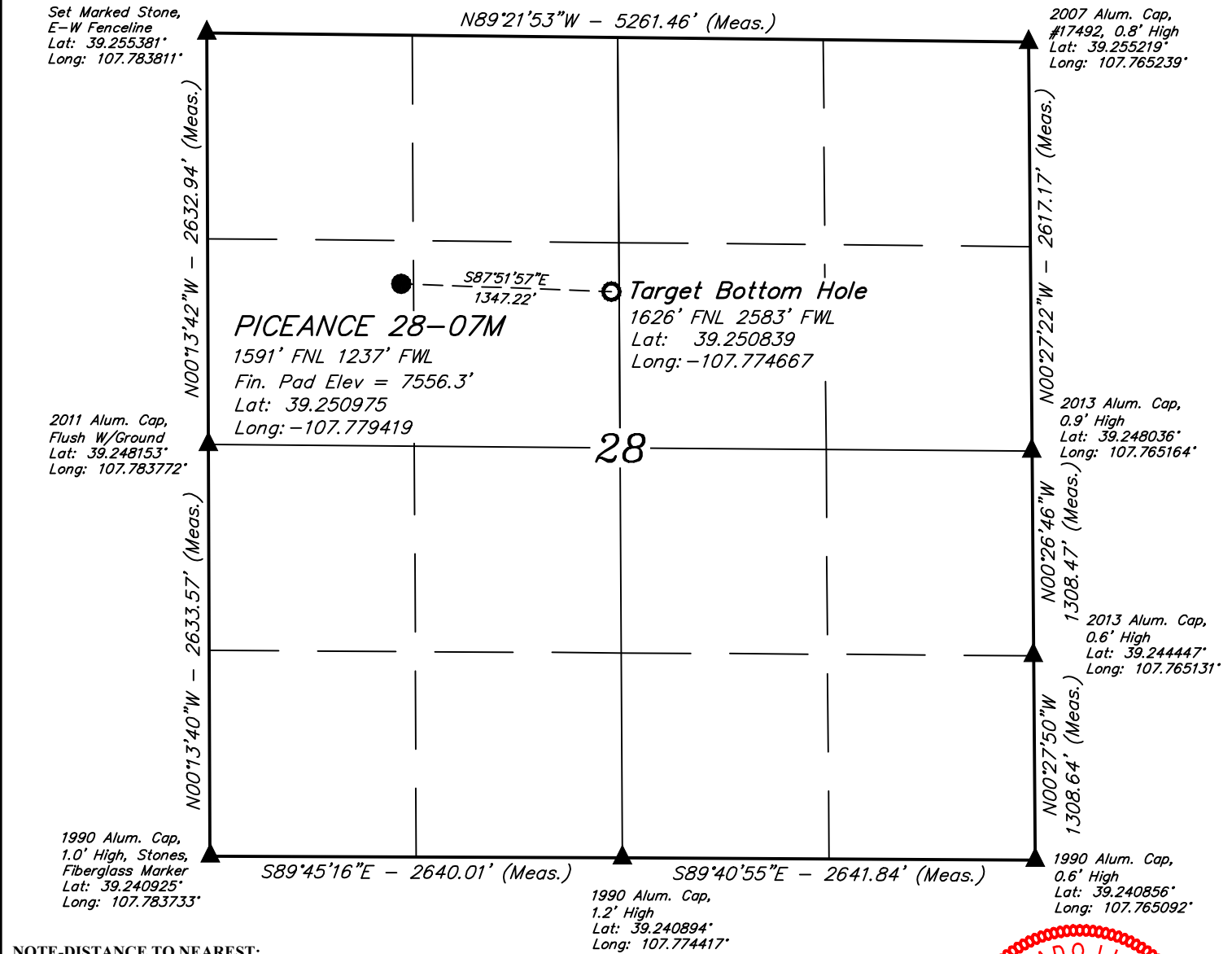


LEGEND:

- = PROPOSED WELLHEAD.
 ○ = TARGET BOTTOM HOLE.
 ▲ = SECTION CORNERS LOCATED.

T9S, R93W, 6th P.M.



NOTE-DISTANCE TO NEAREST:
 BUILDING: N81°W 2425'
 BUILDING UNIT: OVER A MILE
 HOBUS: OVER A MILE
 DOAA: OVER A MILE
 PUBLIC ROAD: OVER A MILE
 ABOVE GROUND UTILITY: N81°W 2374'
 RAILROAD: OVER A MILE
 PROPERTY LINE: NORTH 1591'

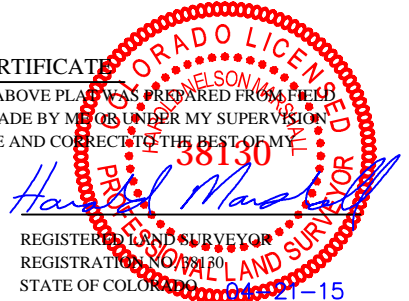
PDOP = 1.6

NOTE:

- 1.) All latitudes and longitudes are given in NAD 83 coordinates.
- 2.) Distances to nearest section lines are measured perpendicularly.

CERTIFICATE

THIS IS TO CERTIFY THAT THE ABOVE PLAT WAS PREPARED FROM FIELD NOTES OF ACTUAL SURVEYS MADE BY ME OR UNDER MY SUPERVISION AND THAT THE SAME ARE TRUE AND CORRECT TO THE BEST OF MY KNOWLEDGE AND BELIEF.



REGISTERED LAND SURVEYOR
 REGISTRATION NO. 38130
 STATE OF COLORADO 04-21-15

BASIS OF BEARINGS

BASIS OF BEARINGS IS A G.P.S. OBSERVATION

BASIS OF ELEVATION

BENCH MARK (19 RDS) LOCATED IN THE SE 1/4 OF SECTION 16, T9S, R93W, 6th P.M., TAKEN FROM THE SOUTH MAMM PEAK, QUADRANGLE, COLORADO, 7.5 MINUTE QUAD. (TOPOGRAPHIC MAP) PUBLISHED BY THE UNITED STATES DEPARTMENT OF THE INTERIOR, GEOLOGICAL SURVEY. SAID ELEVATION IS MARKED AS BEING 7252 FEET.

**PICEANCE ENERGY, LLC**

PICEANCE 28-07M
 SW 1/4 NW 1/4, SECTION 28, T9S, R93W, 6th P.M.
 MESA COUNTY, COLORADO

SURVEYED BY: BRIAN BAKER, N.F.	DATE: 03-11-15
DRAWN BY: M.D.	DATE DRAWN: 04-21-15
SCALE: 1" = 1000'	REVISED: 00-00-00

WELL LOCATION PLAT

UELS, LLC
 Corporate Office * 85 South 200 East
 Vernal, UT 84078 * (435) 789-1017