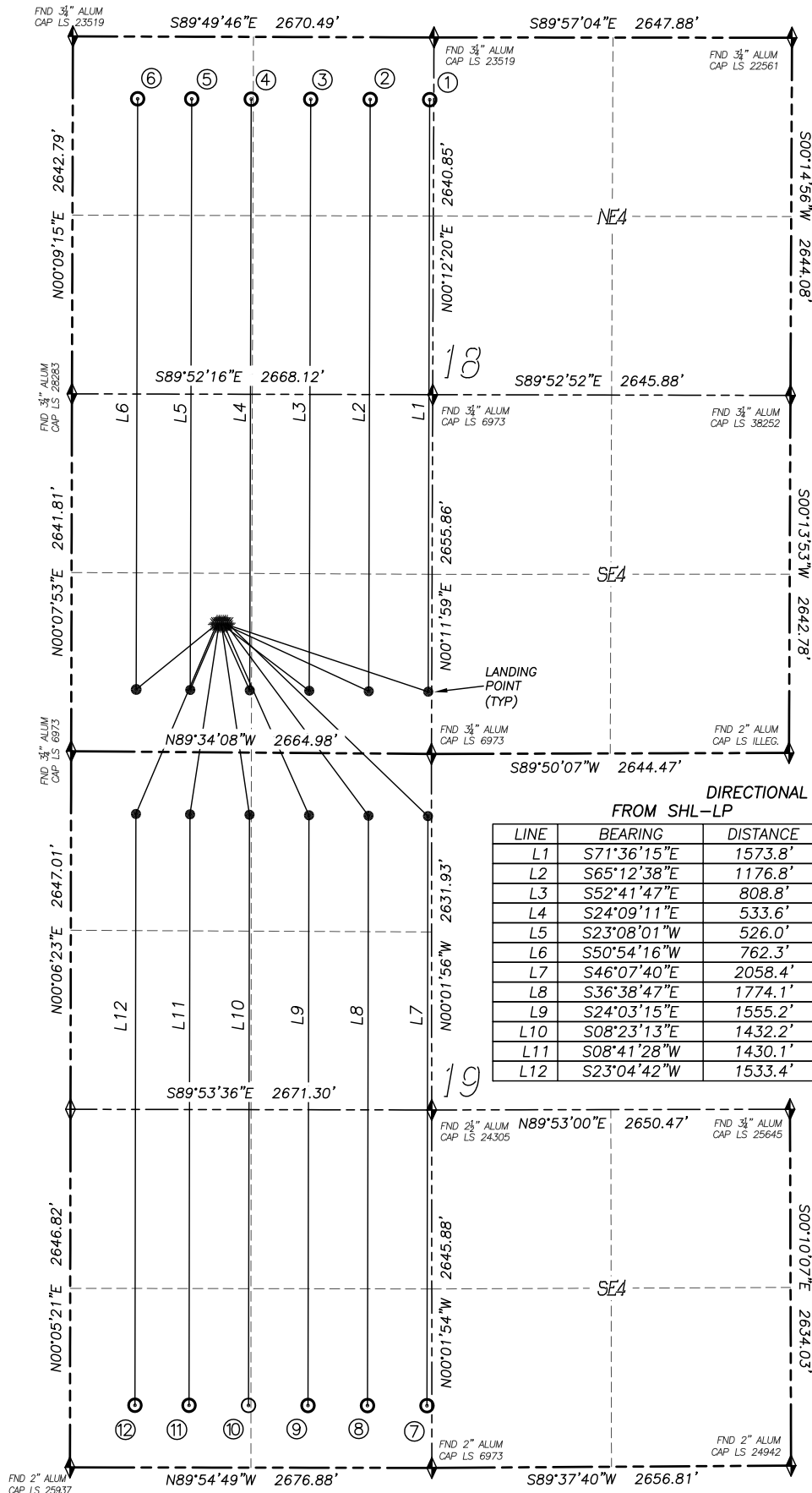


MULTI-WELL PLAN - ANDERSON 19-1-7HN PAD

SECTION 18, TOWNSHIP 1 SOUTH, RANGE 66 WEST OF THE 6TH P.M.



WELL ORDER

1. ANDERSON 18-3-7HC
2. ANDERSON 18-3-8HN
3. ANDERSON 18-3-9HC
4. ANDERSON 18-3-10HN
5. ANDERSON 18-3-11HC
6. ANDERSON 18-3-12HN
7. ANDERSON 19-1-7HN
8. ANDERSON 19-1-8HC
9. ANDERSON 19-1-9HN
10. ANDERSON 19-1-10HC
11. ANDERSON 19-1-11HN
12. ANDERSON 19-1-12HC

NOTES:

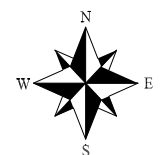
- 1) BEARINGS FOR THIS MAP ARE ASSUMED AND BASED UPON GPS OBSERVATIONS MADE BETWEEN MONUMENTS LOCATED AT THE SOUTHWEST CORNER AND SOUTH QUARTER CORNER OF SECTION 24, T.1S., R.67W.
- 2) HORIZONTAL DATUM IS NAD83.
- 3) VERTICAL DATUM IS NAVD88 AND ORIGINATES FROM THE LOCAL C.O.R.S. NETWORK, UTILIZING THE GEOID12A MODEL.

DIRECTIONAL LINE DATA
FROM SHL-LP FROM LP-BHL

LINE	BEARING	DISTANCE	BEARING	DISTANCE
L1	S71°36'15"E	1573.8'	N00°08'34"E	4376.6'
L2	S65°12'38"E	1176.8'	N00°08'34"E	4374.6'
L3	S52°41'47"E	808.8'	N00°08'34"E	4372.6'
L4	S24°09'11"E	533.6'	N00°08'34"E	4370.6'
L5	S23°08'01"W	526.0'	N00°08'34"E	4368.6'
L6	S50°54'16"W	762.3'	N00°08'34"E	4366.8'
L7	S46°07'40"E	2058.4'	S00°05'52"W	4357.9'
L8	S36°38'47"E	1774.1'	S00°05'52"W	4360.6'
L9	S24°03'15"E	1555.2'	S00°05'52"W	4363.2'
L10	S08°23'13"E	1432.2'	S00°05'52"W	4365.9'
L11	S08°41'28"W	1430.1'	S00°05'52"W	4368.5'
L12	S23°04'42"W	1533.4'	S00°05'52"W	4370.9'

LEGEND

- FOUND MONUMENT AS DESCRIBED
- PROPOSED WELL
- EXISTING WELL
- BOTTOM HOLE
- ABANDONED WELL
- CALCULATED POSITION



0 600 1200
SCALE: 1" = 1200'

DALEY LAND SURVEYING, INC. PARKER, CO. 80134 303 953 9841

MULTI-WELL PLAN - ANDERSON 19-1-7HN PAD
WELL LOCATION DATA

SECTION 18, TOWNSHIP 1 SOUTH, RANGE 66 WEST OF THE 6TH P.M.

Surface Hole					Bottom Hole			
Well Name	Latitude	Longitude	Footage		Latitude	Longitude	Footage	
Anderson 19-1-7HN	N39.96044	W104.82368	955 FSL	1153 FWL	N39.94456	W104.81842	460 FSL	2640 FWL
Anderson 19-1-8HC	N39.96044	W104.82374	955 FSL	1138 FWL	N39.94456	W104.81999	460 FSL	2200 FWL
Anderson 19-1-9HN	N39.96044	W104.82379	955 FSL	1123 FWL	N39.94456	W104.82156	460 FSL	1760 FWL
Anderson 19-1-10HC	N39.96044	W104.82384	955 FSL	1108 FWL	N39.94457	W104.82313	460 FSL	1320 FWL
Anderson 19-1-11HN	N39.96044	W104.82390	955 FSL	1093 FWL	N39.94457	W104.82470	460 FSL	880 FWL
Anderson 19-1-12HC	N39.96044	W104.82395	955 FSL	1078 FWL	N39.94457	W104.82612	460 FSL	480 FWL
Anderson 18-3-7HC	N39.96041	W104.82371	945 FSL	1146 FWL	N39.97106	W104.81834	460 FNL	2640 FWL
Anderson 18-3-8HN	N39.96041	W104.82376	945 FSL	1131 FWL	N39.97106	W104.81991	460 FNL	2200 FWL
Anderson 18-3-9HC	N39.96041	W104.82382	945 FSL	1116 FWL	N39.97106	W104.82148	460 FNL	1760 FWL
Anderson 18-3-10HN	N39.96041	W104.82387	945 FSL	1101 FWL	N39.97107	W104.82305	460 FNL	1320 FWL
Anderson 18-3-11HC	N39.96041	W104.82392	945 FSL	1086 FWL	N39.97107	W104.82462	460 FNL	880 FWL
Anderson 18-3-12HN	N39.96041	W104.82398	945 FSL	1071 FWL	N39.97107	W104.82604	460 FNL	480 FWL