

# **EXTRACTION OIL & GAS**

**WELD COUNTY, COLORADO (NAD 83)**

**SEC. 14 T2N R68W 6th P.M.**

**BYBEE 7**

**ORIGINAL WELLBORE**

**17 March, 2015**

**Plan: PROPOSAL #3**

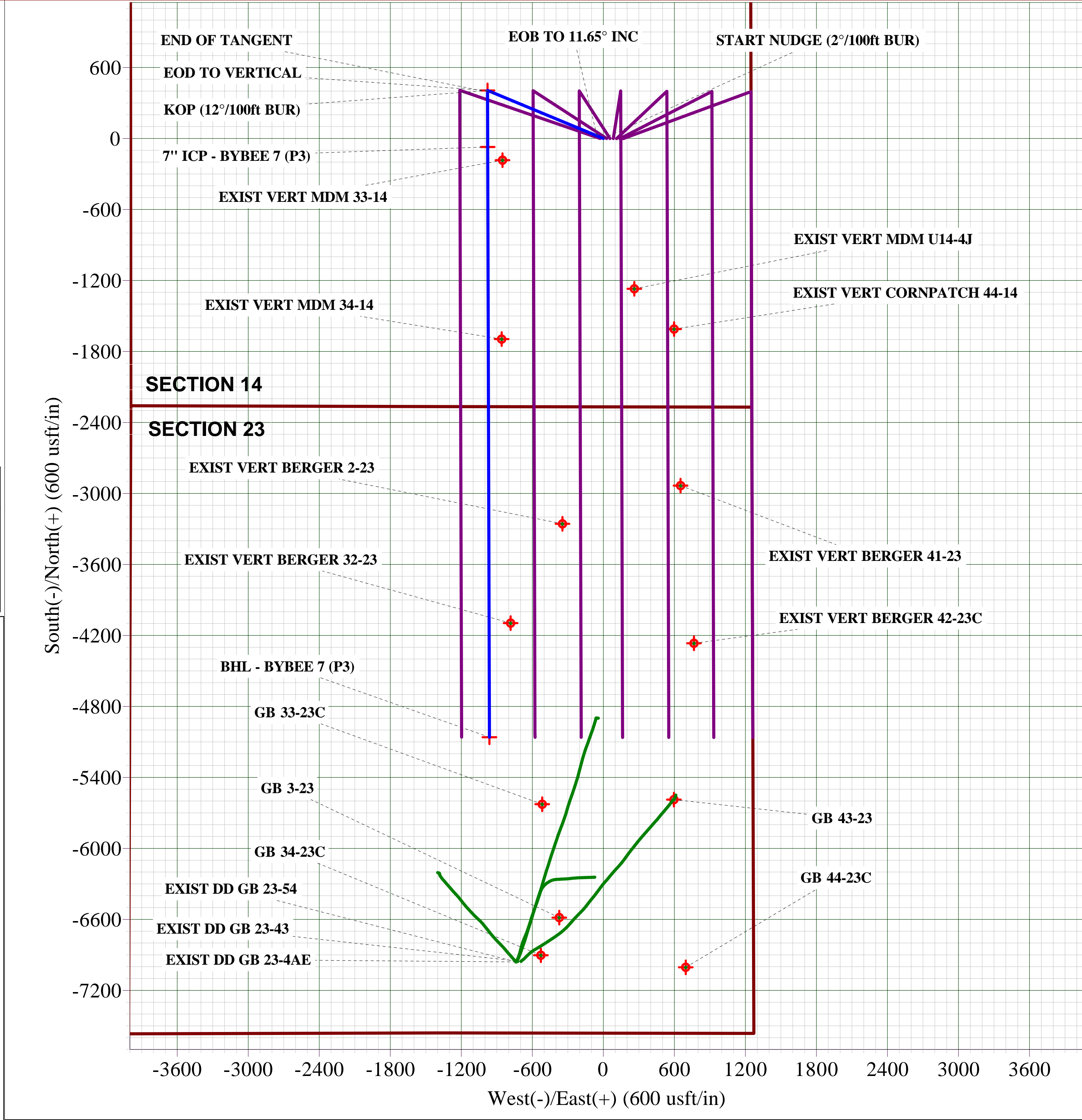
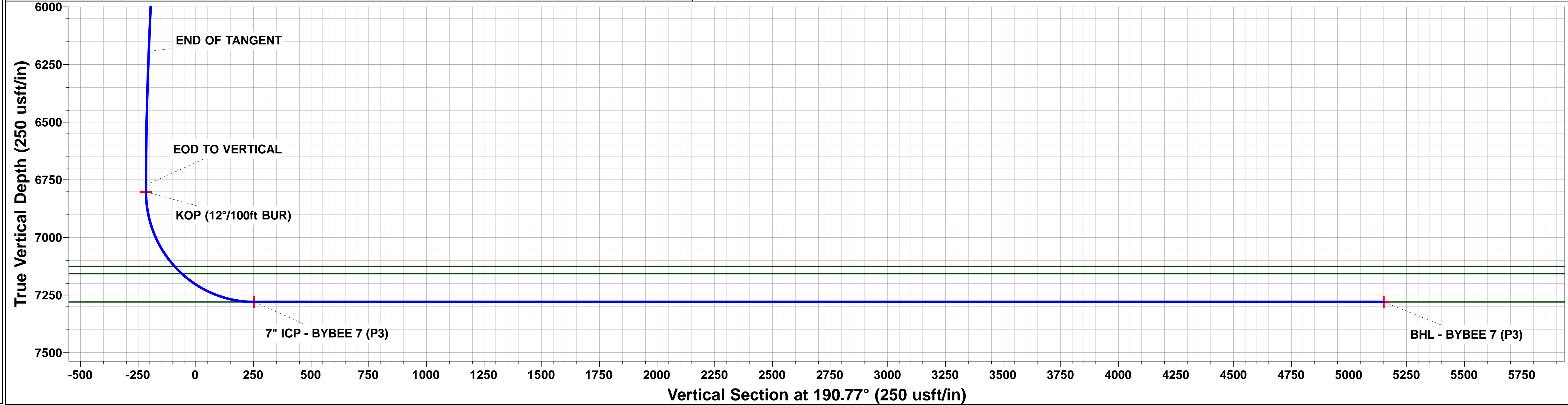
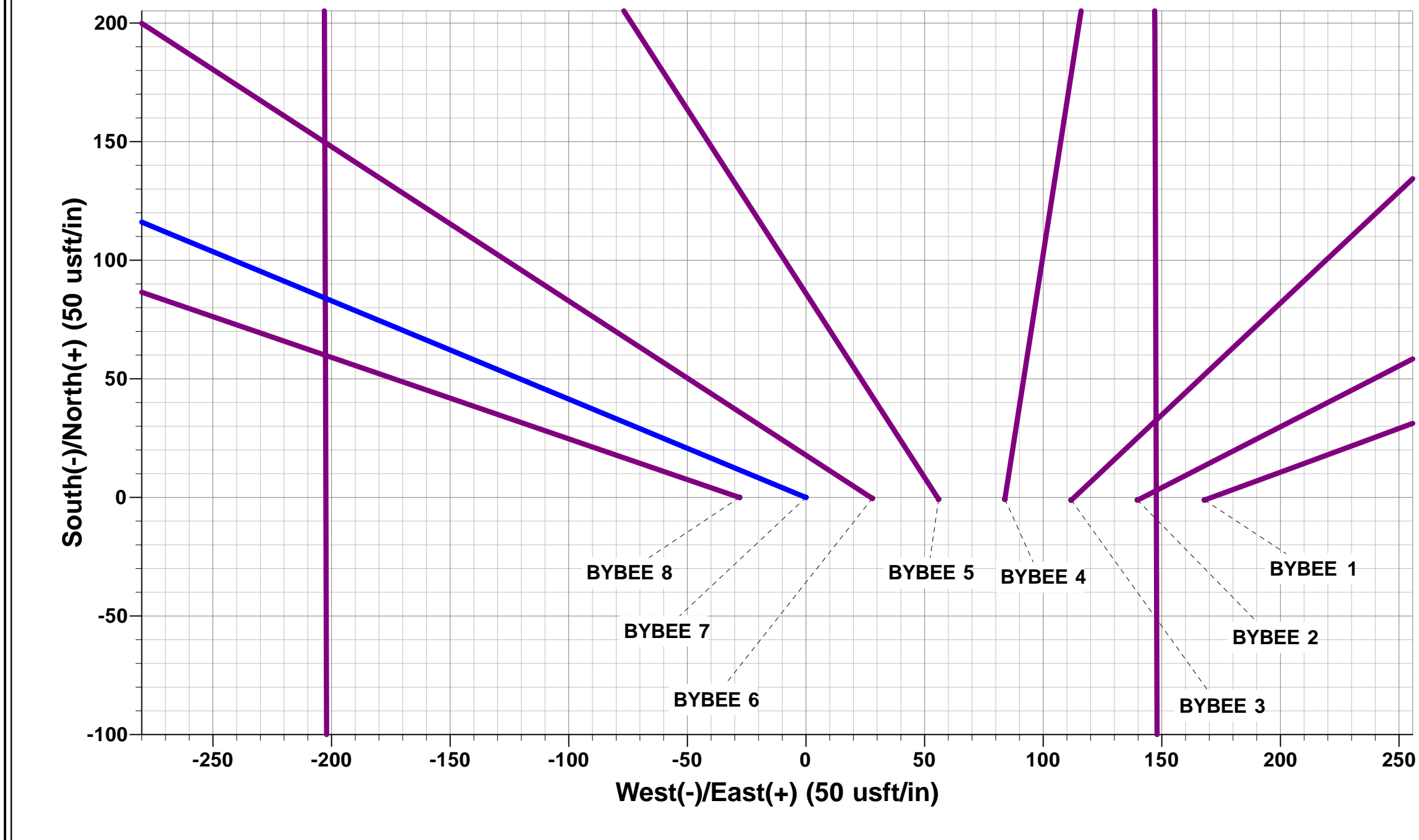
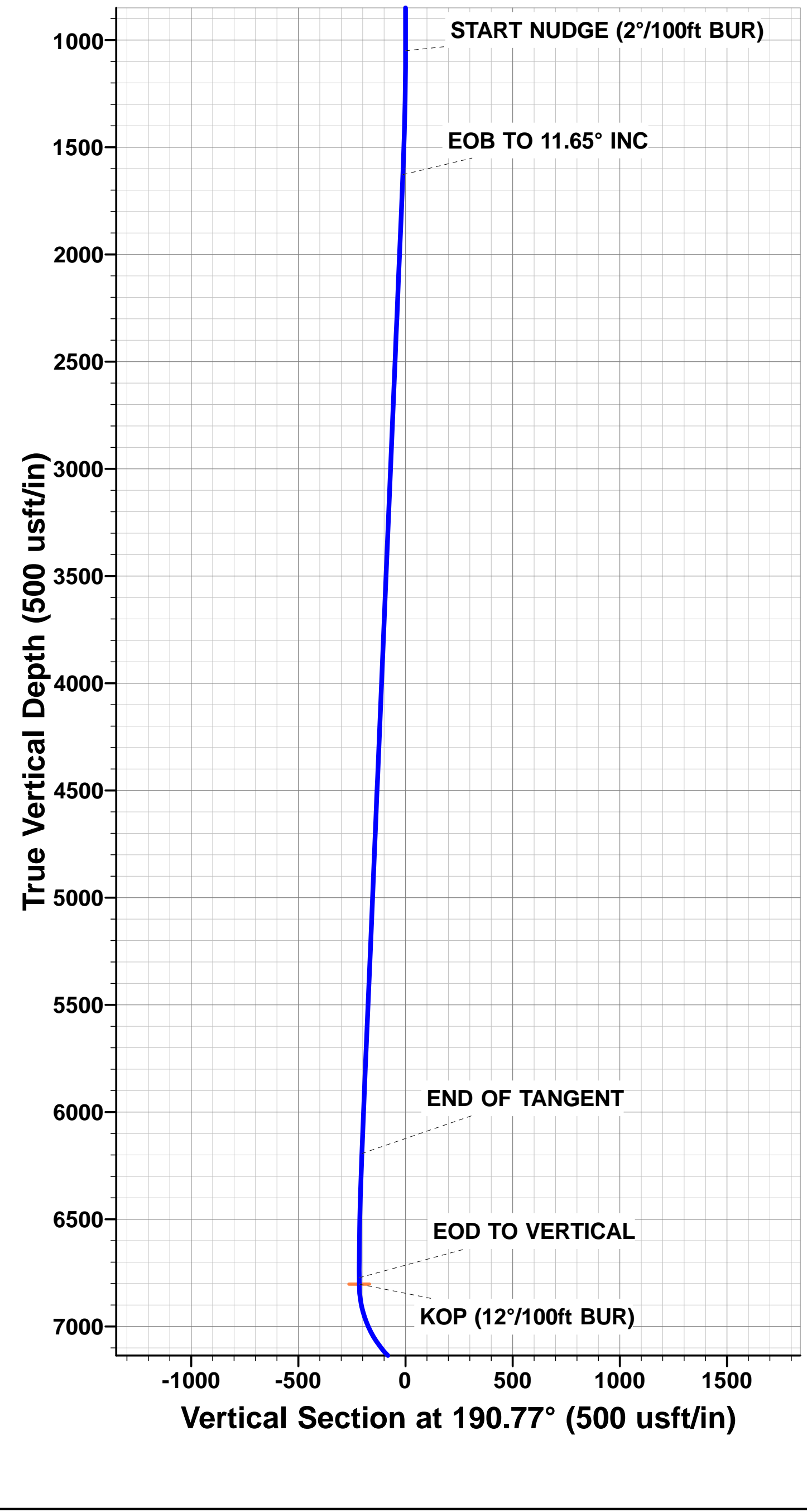




Project: WELD COUNTY, COLORADO (NAD 83)  
Site: SEC. 14 T2N R68W 6th P.M.  
Well: BYBEE 7  
Wellbore: ORIGINAL WELLBORE  
Design: PROPOSAL #3

ANNOTATIONS									FORMATION TOP DETAILS		
TVD	MD	Inc	Azi	+N/-S	+E/-W	VSect	Dep	Annotation	TVDPATH	MDPATH	Formation
1050.0	1050.0	0.00	0.00	0.0	0.0	0.0	0.0	START NUDGE (2°/100ft BUR)	3567.0	3611.8	PARKMAN
1628.5	1632.5	11.65	292.52	22.6	-54.5	-12.0	59.0	EOB TO 11.65° INC	4385.0	4447.0	SUSSEX
6194.0	6294.0	11.65	292.52	383.2	-924.1	-203.7	1000.4	END OF TANGENT	4941.0	5014.7	SHANNON
6772.5	6876.6	0.00	0.00	405.8	-978.6	-215.8	1059.4	EOD TO VERTICAL	7125.0	7260.6	SHARON SPRINGS
6802.5	6906.6	0.00	0.00	405.8	-978.6	-215.8	1059.4	KOP (12°/100ft BUR)	7158.0	7307.6	NIOBRARA
7280.0	7656.6	90.00	179.83	-71.7	-977.2	253.0	1536.9	7" ICP - BYBEE 7 (P3)	7280.0	7653.3	NIO B TARGET
7280.0	12645.0	90.00	179.83	-5060.0	-962.6	5150.8	6525.2	BHL - BYBEE 7 (P3)			

WELLBORE TARGET DETAILS (LAT/LONG)					
Name	TVD	+N/-S	+E/-W	Latitude	Longitude
KOP - BYBEE 7 (P3)	6802.5	405.8	-978.6	40.138778	-104.968973
7" ICP - BYBEE 7 (P3)	7280.0	-71.7	-977.2	40.137467	-104.968968
BHL - BYBEE 7 (P3)	7280.0	-5060.0	-962.6	40.123774	-104.968915



# Planning Report



<b>Database:</b>	EDM 5000.1 Single User Db	<b>Local Co-ordinate Reference:</b>	Well BYBEE 7
<b>Company:</b>	EXTRACTION OIL & GAS	<b>TVD Reference:</b>	KB-EST @ 4913.0usft (Original Well Elev)
<b>Project:</b>	WELD COUNTY, COLORADO (NAD 83)	<b>MD Reference:</b>	KB-EST @ 4913.0usft (Original Well Elev)
<b>Site:</b>	SEC. 14 T2N R68W 6th P.M.	<b>North Reference:</b>	True
<b>Well:</b>	BYBEE 7	<b>Survey Calculation Method:</b>	Minimum Curvature
<b>Wellbore:</b>	ORIGINAL WELLBORE		
<b>Design:</b>	PROPOSAL #3		

<b>Project</b>	WELD COUNTY, COLORADO (NAD 83)		
<b>Map System:</b>	US State Plane 1983	<b>System Datum:</b>	Mean Sea Level
<b>Geo Datum:</b>	North American Datum 1983		
<b>Map Zone:</b>	Colorado Northern Zone		Using geodetic scale factor

<b>Site</b>	SEC. 14 T2N R68W 6th P.M.		
<b>Site Position:</b>		<b>Northing:</b>	1,293,444.96 usft
<b>From:</b>	Lat/Long	<b>Easting:</b>	3,149,614.50 usft
<b>Position Uncertainty:</b>	0.0 usft	<b>Slot Radius:</b>	1.10000ft
		<b>Latitude:</b>	40.137661
		<b>Longitude:</b>	-104.964872
		<b>Grid Convergence:</b>	0.35 °

<b>Well</b>	BYBEE 7		
<b>Well Position</b>	<b>+N/-S</b>	1.1 usft	<b>Northing:</b> 1,293,445.03 usfi
	<b>+E/-W</b>	-168.0 usft	<b>Easting:</b> 3,149,446.47 usfi
<b>Position Uncertainty</b>	0.0 usft	<b>Wellhead Elevation:</b>	usfi
		<b>Latitude:</b>	40.137664
		<b>Longitude:</b>	-104.965473
		<b>Ground Level:</b>	4,889.0 usft

<b>Wellbore</b>	ORIGINAL WELLBORE				
<b>Magnetics</b>	<b>Model Name</b>	<b>Sample Date</b>	<b>Declination (°)</b>	<b>Dip Angle (°)</b>	<b>Field Strength (nT)</b>
	IGRF2010	15/10/2014	8.50	66.69	52,621

<b>Design</b>	PROPOSAL #3			
<b>Audit Notes:</b>				
<b>Version:</b>	<b>Phase:</b>	PROTOTYPE	<b>Tie On Depth:</b>	0.0
<b>Vertical Section:</b>	<b>Depth From (TVD) (usft)</b>	<b>+N/-S (usft)</b>	<b>+E/-W (usft)</b>	<b>Direction (°)</b>
	7,280.0	0.0	0.0	190.77

<b>Plan Sections</b>											
MD (usft)	Inc (°)	Azi (°)	Vertical Depth	SS (usft)	+N/-S (usft)	+E/-W (usft)	Dogleg Rate (°/100usf)	Build Rate (°/100usf)	Turn Rate (°/100usf)	TFO (°)	Target
0.0	0.00	0.00	0.0	-4,913.0	0.0	0.0	0.00	0.00	0.00	0.00	
1,050.0	0.00	0.00	1,050.0	-3,863.0	0.0	0.0	0.00	0.00	0.00	0.00	
1,632.5	11.65	292.52	1,628.5	-3,284.5	22.6	-54.5	2.00	2.00	0.00	292.52	
6,294.0	11.65	292.52	6,194.0	1,281.0	383.2	-924.1	0.00	0.00	0.00	0.00	
6,876.6	0.00	0.00	6,772.5	1,859.5	405.8	-978.6	2.00	-2.00	0.00	180.00	
6,906.6	0.00	0.00	6,802.5	1,889.5	405.8	-978.6	0.00	0.00	0.00	0.00	KOP - BYBEE 7 (P
7,656.6	90.00	179.83	7,280.0	2,367.0	-71.7	-977.2	12.00	12.00	23.97	179.83	7" ICP - BYBEE 7 (
12,645.0	90.00	179.83	7,280.0	2,367.0	-5,060.0	-962.6	0.00	0.00	0.00	-175.07	BHL - BYBEE 7 (P

## Planning Report



<b>Database:</b>	EDM 5000.1 Single User Db	<b>Local Co-ordinate Reference:</b>	Well BYBEE 7
<b>Company:</b>	EXTRACTION OIL & GAS	<b>TVD Reference:</b>	KB-EST @ 4913.0usft (Original Well Elev)
<b>Project:</b>	WELD COUNTY, COLORADO (NAD 83)	<b>MD Reference:</b>	KB-EST @ 4913.0usft (Original Well Elev)
<b>Site:</b>	SEC. 14 T2N R68W 6th P.M.	<b>North Reference:</b>	True
<b>Well:</b>	BYBEE 7	<b>Survey Calculation Method:</b>	Minimum Curvature
<b>Wellbore:</b>	ORIGINAL WELLBORE		
<b>Design:</b>	PROPOSAL #3		

## Planned Survey

MD (usft)	Inc (°)	Azi (°)	TVD (usft)	SS (usft)	+N/-S (usft)	+E/-W (usft)	Vertical Section (usft)	Dogleg Rate (°/100usft)	Build Rate (°/100usft)	Turn Rate (°/100usft)
0.0	0.00	0.00	0.0	4,913.00	0.0	0.0	0.0	0.00	0.00	0.00
100.0	0.00	0.00	100.0	4,813.00	0.0	0.0	0.0	0.00	0.00	0.00
200.0	0.00	0.00	200.0	4,713.00	0.0	0.0	0.0	0.00	0.00	0.00
300.0	0.00	0.00	300.0	4,613.00	0.0	0.0	0.0	0.00	0.00	0.00
400.0	0.00	0.00	400.0	4,513.00	0.0	0.0	0.0	0.00	0.00	0.00
500.0	0.00	0.00	500.0	4,413.00	0.0	0.0	0.0	0.00	0.00	0.00
600.0	0.00	0.00	600.0	4,313.00	0.0	0.0	0.0	0.00	0.00	0.00
700.0	0.00	0.00	700.0	4,213.00	0.0	0.0	0.0	0.00	0.00	0.00
800.0	0.00	0.00	800.0	4,113.00	0.0	0.0	0.0	0.00	0.00	0.00
900.0	0.00	0.00	900.0	4,013.00	0.0	0.0	0.0	0.00	0.00	0.00
1,000.0	0.00	0.00	1,000.0	3,913.00	0.0	0.0	0.0	0.00	0.00	0.00
<b>START NUDGE (2°/100ft BUR)</b>										
1,050.0	0.00	0.00	1,050.0	3,863.00	0.0	0.0	0.0	0.00	0.00	0.00
1,100.0	1.00	292.52	1,100.0	3,813.00	0.2	-0.4	-0.1	2.00	2.00	0.00
1,200.0	3.00	292.52	1,199.9	3,713.07	1.5	-3.6	-0.8	2.00	2.00	0.00
1,300.0	5.00	292.52	1,299.7	3,613.32	4.2	-10.1	-2.2	2.00	2.00	0.00
1,400.0	7.00	292.52	1,399.1	3,513.87	8.2	-19.7	-4.3	2.00	2.00	0.00
1,500.0	9.00	292.52	1,498.2	3,414.85	13.5	-32.6	-7.2	2.00	2.00	0.00
1,600.0	11.00	292.52	1,596.6	3,316.37	20.2	-48.6	-10.7	2.00	2.00	0.00
<b>EOB TO 11.65° INC</b>										
1,632.5	11.65	292.52	1,628.5	3,284.51	22.6	-54.5	-12.0	2.00	2.00	0.00
1,700.0	11.65	292.52	1,694.6	3,218.40	27.8	-67.1	-14.8	0.00	0.00	0.00
1,800.0	11.65	292.52	1,792.5	3,120.46	35.6	-85.8	-18.9	0.00	0.00	0.00
1,900.0	11.65	292.52	1,890.5	3,022.52	43.3	-104.4	-23.0	0.00	0.00	0.00
2,000.0	11.65	292.52	1,988.4	2,924.58	51.0	-123.1	-27.1	0.00	0.00	0.00
2,100.0	11.65	292.52	2,086.4	2,826.64	58.8	-141.7	-31.2	0.00	0.00	0.00
2,200.0	11.65	292.52	2,184.3	2,728.70	66.5	-160.4	-35.4	0.00	0.00	0.00
2,300.0	11.65	292.52	2,282.2	2,630.76	74.2	-179.0	-39.5	0.00	0.00	0.00
2,400.0	11.65	292.52	2,380.2	2,532.82	82.0	-197.7	-43.6	0.00	0.00	0.00
2,500.0	11.65	292.52	2,478.1	2,434.88	89.7	-216.3	-47.7	0.00	0.00	0.00
2,600.0	11.65	292.52	2,576.1	2,336.94	97.4	-235.0	-51.8	0.00	0.00	0.00
2,700.0	11.65	292.52	2,674.0	2,239.00	105.2	-253.6	-55.9	0.00	0.00	0.00
2,800.0	11.65	292.52	2,771.9	2,141.06	112.9	-272.3	-60.0	0.00	0.00	0.00
2,900.0	11.65	292.52	2,869.9	2,043.12	120.7	-291.0	-64.2	0.00	0.00	0.00
3,000.0	11.65	292.52	2,967.8	1,945.18	128.4	-309.6	-68.3	0.00	0.00	0.00
3,100.0	11.65	292.52	3,065.8	1,847.24	136.1	-328.3	-72.4	0.00	0.00	0.00
3,200.0	11.65	292.52	3,163.7	1,749.30	143.9	-346.9	-76.5	0.00	0.00	0.00
3,300.0	11.65	292.52	3,261.6	1,651.36	151.6	-365.6	-80.6	0.00	0.00	0.00
3,400.0	11.65	292.52	3,359.6	1,553.42	159.3	-384.2	-84.7	0.00	0.00	0.00
3,500.0	11.65	292.52	3,457.5	1,455.48	167.1	-402.9	-88.8	0.00	0.00	0.00
3,600.0	11.65	292.52	3,555.5	1,357.54	174.8	-421.5	-92.9	0.00	0.00	0.00
<b>PARKMAN</b>										
3,611.8	11.65	292.52	3,567.0	1,346.00	175.7	-423.7	-93.4	0.00	0.00	0.00
3,700.0	11.65	292.52	3,653.4	1,259.60	182.5	-440.2	-97.1	0.00	0.00	0.00
3,800.0	11.65	292.52	3,751.3	1,161.66	190.3	-458.8	-101.2	0.00	0.00	0.00
3,900.0	11.65	292.52	3,849.3	1,063.72	198.0	-477.5	-105.3	0.00	0.00	0.00
4,000.0	11.65	292.52	3,947.2	965.78	205.7	-496.2	-109.4	0.00	0.00	0.00
4,100.0	11.65	292.52	4,045.2	867.84	213.5	-514.8	-113.5	0.00	0.00	0.00
4,200.0	11.65	292.52	4,143.1	769.90	221.2	-533.5	-117.6	0.00	0.00	0.00
4,300.0	11.65	292.52	4,241.0	671.96	228.9	-552.1	-121.7	0.00	0.00	0.00
4,400.0	11.65	292.52	4,339.0	574.02	236.7	-570.8	-125.8	0.00	0.00	0.00
<b>SUSSEX</b>										
4,447.0	11.65	292.52	4,385.0	528.00	240.3	-579.5	-127.8	0.00	0.00	0.00
4,500.0	11.65	292.52	4,436.9	476.08	244.4	-589.4	-130.0	0.00	0.00	0.00

<b>Database:</b>	EDM 5000.1 Single User Db	<b>Local Co-ordinate Reference:</b>	Well BYBEE 7
<b>Company:</b>	EXTRACTION OIL & GAS	<b>TVD Reference:</b>	KB-EST @ 4913.0usft (Original Well Elev)
<b>Project:</b>	WELD COUNTY, COLORADO (NAD 83)	<b>MD Reference:</b>	KB-EST @ 4913.0usft (Original Well Elev)
<b>Site:</b>	SEC. 14 T2N R68W 6th P.M.	<b>North Reference:</b>	True
<b>Well:</b>	BYBEE 7	<b>Survey Calculation Method:</b>	Minimum Curvature
<b>Wellbore:</b>	ORIGINAL WELLBORE		
<b>Design:</b>	PROPOSAL #3		

## Planned Survey

MD (usft)	Inc (°)	Azi (°)	TVD (usft)	SS (usft)	+N/-S (usft)	+E/-W (usft)	Vertical Section (usft)	Dogleg Rate (°/100usft)	Build Rate (°/100usft)	Turn Rate (°/100usft)
4,600.0	11.65	292.52	4,534.9	378.14	252.2	-608.1	-134.1	0.00	0.00	0.00
4,700.0	11.65	292.52	4,632.8	280.20	259.9	-626.7	-138.2	0.00	0.00	0.00
4,800.0	11.65	292.52	4,730.7	182.26	267.6	-645.4	-142.3	0.00	0.00	0.00
4,900.0	11.65	292.52	4,828.7	84.33	275.4	-664.0	-146.4	0.00	0.00	0.00
5,000.0	11.65	292.52	4,926.6	-13.61	283.1	-682.7	-150.5	0.00	0.00	0.00
<b>SHANNON</b>										
<b>5,014.7</b>	<b>11.65</b>	<b>292.52</b>	<b>4,941.0</b>	<b>-28.00</b>	<b>284.2</b>	<b>-685.4</b>	<b>-151.1</b>	<b>0.00</b>	<b>0.00</b>	<b>0.00</b>
5,100.0	11.65	292.52	5,024.6	-111.55	290.8	-701.3	-154.6	0.00	0.00	0.00
5,200.0	11.65	292.52	5,122.5	-209.49	298.6	-720.0	-158.8	0.00	0.00	0.00
5,300.0	11.65	292.52	5,220.4	-307.43	306.3	-738.7	-162.9	0.00	0.00	0.00
5,400.0	11.65	292.52	5,318.4	-405.37	314.0	-757.3	-167.0	0.00	0.00	0.00
5,500.0	11.65	292.52	5,416.3	-503.31	321.8	-776.0	-171.1	0.00	0.00	0.00
5,600.0	11.65	292.52	5,514.3	-601.25	329.5	-794.6	-175.2	0.00	0.00	0.00
5,700.0	11.65	292.52	5,612.2	-699.19	337.2	-813.3	-179.3	0.00	0.00	0.00
5,800.0	11.65	292.52	5,710.1	-797.13	345.0	-831.9	-183.4	0.00	0.00	0.00
5,900.0	11.65	292.52	5,808.1	-895.07	352.7	-850.6	-187.5	0.00	0.00	0.00
6,000.0	11.65	292.52	5,906.0	-993.01	360.4	-869.2	-191.7	0.00	0.00	0.00
6,100.0	11.65	292.52	6,004.0	-1,090.95	368.2	-887.9	-195.8	0.00	0.00	0.00
6,200.0	11.65	292.52	6,101.9	-1,188.89	375.9	-906.5	-199.9	0.00	0.00	0.00
<b>END OF TANGENT</b>										
<b>6,294.0</b>	<b>11.65</b>	<b>292.52</b>	<b>6,194.0</b>	<b>-1,280.95</b>	<b>383.2</b>	<b>-924.1</b>	<b>-203.7</b>	<b>0.00</b>	<b>0.00</b>	<b>0.00</b>
6,300.0	11.53	292.52	6,199.8	-1,286.83	383.7	-925.2	-204.0	1.99	-1.99	0.00
6,400.0	9.53	292.52	6,298.1	-1,385.14	390.7	-942.1	-207.7	2.00	-2.00	0.00
6,500.0	7.53	292.52	6,397.0	-1,484.03	396.3	-955.8	-210.7	2.00	-2.00	0.00
6,600.0	5.53	292.52	6,496.4	-1,583.38	400.7	-966.3	-213.1	2.00	-2.00	0.00
6,700.0	3.53	292.52	6,596.1	-1,683.06	403.7	-973.6	-214.7	2.00	-2.00	0.00
6,800.0	1.53	292.52	6,696.0	-1,782.96	405.4	-977.7	-215.6	2.00	-2.00	0.00
<b>EOD TO VERTICAL</b>										
<b>6,876.6</b>	<b>0.00</b>	<b>0.00</b>	<b>6,772.5</b>	<b>-1,859.55</b>	<b>405.8</b>	<b>-978.6</b>	<b>-215.8</b>	<b>2.00</b>	<b>-2.00</b>	<b>0.00</b>
6,900.0	0.00	0.00	6,795.9	-1,882.95	405.8	-978.6	-215.8	0.00	0.00	0.00
<b>KOP (12°/100ft BUR)</b>										
<b>6,906.6</b>	<b>0.00</b>	<b>0.00</b>	<b>6,802.5</b>	<b>-1,889.55</b>	<b>405.8</b>	<b>-978.6</b>	<b>-215.8</b>	<b>0.00</b>	<b>0.00</b>	<b>0.00</b>
7,000.0	11.21	179.83	6,895.4	-1,982.35	396.7	-978.6	-206.8	12.01	12.01	0.00
7,100.0	23.21	179.83	6,990.7	-2,077.70	367.1	-978.5	-177.8	12.00	12.00	0.00
7,200.0	35.21	179.83	7,077.8	-2,164.82	318.4	-978.3	-130.0	12.00	12.00	0.00
<b>SHARON SPRINGS</b>										
<b>7,260.6</b>	<b>42.48</b>	<b>179.83</b>	<b>7,125.0</b>	<b>-2,212.00</b>	<b>280.4</b>	<b>-978.2</b>	<b>-92.7</b>	<b>12.00</b>	<b>12.00</b>	<b>0.00</b>
7,300.0	47.21	179.83	7,152.9	-2,239.91	252.7	-978.2	-65.4	12.00	12.00	0.00
<b>NIOBRARA</b>										
<b>7,307.6</b>	<b>48.12</b>	<b>179.83</b>	<b>7,158.0</b>	<b>-2,245.00</b>	<b>247.1</b>	<b>-978.1</b>	<b>-59.9</b>	<b>12.00</b>	<b>12.00</b>	<b>0.00</b>
7,400.0	59.21	179.83	7,212.7	-2,299.69	172.7	-977.9	13.1	12.00	12.00	0.00
7,500.0	71.21	179.83	7,254.5	-2,341.55	82.1	-977.7	102.0	12.00	12.00	0.00
7,600.0	83.21	179.83	7,276.6	-2,363.65	-15.2	-977.4	197.6	12.00	12.00	0.00
<b>NIO B TARGET</b>										
<b>7,653.3</b>	<b>89.21</b>	<b>179.83</b>	<b>7,280.0</b>	<b>-2,367.00</b>	<b>-68.4</b>	<b>-977.2</b>	<b>249.8</b>	<b>11.26</b>	<b>11.26</b>	<b>0.00</b>
<b>7" ICP - BYBEE 7 (P3)</b>										
<b>7,656.6</b>	<b>90.00</b>	<b>179.83</b>	<b>7,280.0</b>	<b>-2,367.00</b>	<b>-71.7</b>	<b>-977.2</b>	<b>253.0</b>	<b>24.02</b>	<b>24.02</b>	<b>0.00</b>
7,700.0	90.00	179.83	7,280.0	-2,367.00	-115.1	-977.1	295.7	0.01	0.01	0.00
7,800.0	90.00	179.83	7,280.0	-2,366.99	-215.1	-976.8	393.8	0.00	0.00	0.00
7,900.0	90.00	179.83	7,280.0	-2,366.98	-315.1	-976.5	492.0	0.00	0.00	0.00
8,000.0	90.00	179.83	7,280.0	-2,366.97	-415.1	-976.2	590.2	0.00	0.00	0.00
8,100.0	90.00	179.83	7,280.0	-2,366.97	-515.1	-975.9	688.4	0.00	0.00	0.00
8,200.0	90.00	179.83	7,280.0	-2,366.96	-615.1	-975.6	786.6	0.00	0.00	0.00



<b>Database:</b>	EDM 5000.1 Single User Db	<b>Local Co-ordinate Reference:</b>	Well BYBEE 7
<b>Company:</b>	EXTRACTION OIL & GAS	<b>TVD Reference:</b>	KB-EST @ 4913.0usft (Original Well Elev)
<b>Project:</b>	WELD COUNTY, COLORADO (NAD 83)	<b>MD Reference:</b>	KB-EST @ 4913.0usft (Original Well Elev)
<b>Site:</b>	SEC. 14 T2N R68W 6th P.M.	<b>North Reference:</b>	True
<b>Well:</b>	BYBEE 7	<b>Survey Calculation Method:</b>	Minimum Curvature
<b>Wellbore:</b>	ORIGINAL WELLBORE		
<b>Design:</b>	PROPOSAL #3		

Planned Survey										
MD (usft)	Inc (°)	Azi (°)	TVD (usft)	SS (usft)	+N/-S (usft)	+E/-W (usft)	Vertical Section (usft)	Dogleg Rate (°/100usft)	Build Rate (°/100usft)	Turn Rate (°/100usft)
8,300.0	90.00	179.83	7,280.0	-2,366.95	-715.1	-975.3	884.8	0.00	0.00	0.00
8,400.0	90.00	179.83	7,279.9	-2,366.95	-815.1	-975.0	982.9	0.00	0.00	0.00
8,500.0	90.00	179.83	7,279.9	-2,366.94	-915.1	-974.7	1,081.1	0.00	0.00	0.00
8,600.0	90.00	179.83	7,279.9	-2,366.94	-1,015.1	-974.4	1,179.3	0.00	0.00	0.00
8,700.0	90.00	179.83	7,279.9	-2,366.93	-1,115.1	-974.2	1,277.5	0.00	0.00	0.00
8,800.0	90.00	179.83	7,279.9	-2,366.93	-1,215.1	-973.9	1,375.7	0.00	0.00	0.00
8,900.0	90.00	179.83	7,279.9	-2,366.92	-1,315.1	-973.6	1,473.9	0.00	0.00	0.00
9,000.0	90.00	179.83	7,279.9	-2,366.92	-1,415.1	-973.3	1,572.0	0.00	0.00	0.00
9,100.0	90.00	179.83	7,279.9	-2,366.91	-1,515.1	-973.0	1,670.2	0.00	0.00	0.00
9,200.0	90.00	179.83	7,279.9	-2,366.91	-1,615.1	-972.7	1,768.4	0.00	0.00	0.00
9,300.0	90.00	179.83	7,279.9	-2,366.91	-1,715.1	-972.4	1,866.6	0.00	0.00	0.00
9,400.0	90.00	179.83	7,279.9	-2,366.90	-1,815.1	-972.1	1,964.8	0.00	0.00	0.00
9,500.0	90.00	179.83	7,279.9	-2,366.90	-1,915.1	-971.8	2,063.0	0.00	0.00	0.00
9,600.0	90.00	179.83	7,279.9	-2,366.90	-2,015.1	-971.5	2,161.1	0.00	0.00	0.00
9,700.0	90.00	179.83	7,279.9	-2,366.90	-2,115.1	-971.2	2,259.3	0.00	0.00	0.00
9,800.0	90.00	179.83	7,279.9	-2,366.90	-2,215.1	-970.9	2,357.5	0.00	0.00	0.00
9,900.0	90.00	179.83	7,279.9	-2,366.90	-2,315.1	-970.6	2,455.7	0.00	0.00	0.00
10,000.0	90.00	179.83	7,279.9	-2,366.89	-2,415.1	-970.3	2,553.9	0.00	0.00	0.00
10,100.0	90.00	179.83	7,279.9	-2,366.89	-2,515.1	-970.0	2,652.1	0.00	0.00	0.00
10,200.0	90.00	179.83	7,279.9	-2,366.89	-2,615.1	-969.8	2,750.2	0.00	0.00	0.00
10,300.0	90.00	179.83	7,279.9	-2,366.89	-2,715.1	-969.5	2,848.4	0.00	0.00	0.00
10,400.0	90.00	179.83	7,279.9	-2,366.90	-2,815.1	-969.2	2,946.6	0.00	0.00	0.00
10,500.0	90.00	179.83	7,279.9	-2,366.90	-2,915.1	-968.9	3,044.8	0.00	0.00	0.00
10,600.0	90.00	179.83	7,279.9	-2,366.90	-3,015.1	-968.6	3,143.0	0.00	0.00	0.00
10,700.0	90.00	179.83	7,279.9	-2,366.90	-3,115.1	-968.3	3,241.2	0.00	0.00	0.00
10,800.0	90.00	179.83	7,279.9	-2,366.90	-3,215.1	-968.0	3,339.3	0.00	0.00	0.00
10,900.0	90.00	179.83	7,279.9	-2,366.90	-3,315.1	-967.7	3,437.5	0.00	0.00	0.00
11,000.0	90.00	179.83	7,279.9	-2,366.91	-3,415.1	-967.4	3,535.7	0.00	0.00	0.00
11,100.0	90.00	179.83	7,279.9	-2,366.91	-3,515.1	-967.1	3,633.9	0.00	0.00	0.00
11,200.0	90.00	179.83	7,279.9	-2,366.91	-3,615.1	-966.8	3,732.1	0.00	0.00	0.00
11,300.0	90.00	179.83	7,279.9	-2,366.92	-3,715.1	-966.5	3,830.3	0.00	0.00	0.00
11,400.0	90.00	179.83	7,279.9	-2,366.92	-3,815.1	-966.2	3,928.4	0.00	0.00	0.00
11,500.0	90.00	179.83	7,279.9	-2,366.93	-3,915.1	-965.9	4,026.6	0.00	0.00	0.00
11,600.0	90.00	179.83	7,279.9	-2,366.93	-4,015.1	-965.6	4,124.8	0.00	0.00	0.00
11,700.0	90.00	179.83	7,279.9	-2,366.94	-4,115.1	-965.4	4,223.0	0.00	0.00	0.00
11,800.0	90.00	179.83	7,279.9	-2,366.94	-4,215.1	-965.1	4,321.2	0.00	0.00	0.00
11,900.0	90.00	179.83	7,279.9	-2,366.95	-4,315.1	-964.8	4,419.3	0.00	0.00	0.00
12,000.0	90.00	179.83	7,280.0	-2,366.95	-4,415.1	-964.5	4,517.5	0.00	0.00	0.00
12,100.0	90.00	179.83	7,280.0	-2,366.96	-4,515.1	-964.2	4,615.7	0.00	0.00	0.00
12,200.0	90.00	179.83	7,280.0	-2,366.97	-4,615.1	-963.9	4,713.9	0.00	0.00	0.00
12,300.0	90.00	179.83	7,280.0	-2,366.97	-4,715.1	-963.6	4,812.1	0.00	0.00	0.00
12,400.0	90.00	179.83	7,280.0	-2,366.98	-4,815.1	-963.3	4,910.3	0.00	0.00	0.00
12,500.0	90.00	179.83	7,280.0	-2,366.99	-4,915.1	-963.0	5,008.4	0.00	0.00	0.00
12,600.0	90.00	179.83	7,280.0	-2,367.00	-5,015.1	-962.7	5,106.6	0.00	0.00	0.00
<b>BHL - BYBEE 7 (P3)</b>										
<b>12,645.0</b>	<b>90.00</b>	<b>179.83</b>	<b>7,280.0</b>	<b>-2,367.00</b>	<b>-5,060.0</b>	<b>-962.6</b>	<b>5,150.8</b>	<b>0.00</b>	<b>0.00</b>	<b>0.00</b>

<b>Database:</b>	EDM 5000.1 Single User Db	<b>Local Co-ordinate Reference:</b>	Well BYBEE 7
<b>Company:</b>	EXTRACTION OIL & GAS	<b>TVD Reference:</b>	KB-EST @ 4913.0usft (Original Well Elev)
<b>Project:</b>	WELD COUNTY, COLORADO (NAD 83)	<b>MD Reference:</b>	KB-EST @ 4913.0usft (Original Well Elev)
<b>Site:</b>	SEC. 14 T2N R68W 6th P.M.	<b>North Reference:</b>	True
<b>Well:</b>	BYBEE 7	<b>Survey Calculation Method:</b>	Minimum Curvature
<b>Wellbore:</b>	ORIGINAL WELLBORE		
<b>Design:</b>	PROPOSAL #3		

## Formations

MD (usft)	TVD (usft)	Name	Lithology	Dip (°)	Dip Direction (°)
3,611.8	3,567.0	PARKMAN		0.00	
4,447.0	4,385.0	SUSSEX		0.00	
5,014.7	4,941.0	SHANNON		0.00	
7,260.6	7,125.0	SHARON SPRINGS		0.00	
7,307.6	7,158.0	NIOBRARA		0.00	
7,653.3	7,280.0	NIO B TARGET		0.00	

## Plan Annotations

MD (usft)	TVD (usft)	Local Coordinates		Comment
		+N/-S (usft)	+E/-W (usft)	
1,050.0	1,050.0	0.0	0.0	START NUDGE (2°/100ft BUR)
1,632.5	1,628.5	22.6	-54.5	EOB TO 11.65° INC
6,294.0	6,194.0	383.2	-924.1	END OF TANGENT
6,876.6	6,772.5	405.8	-978.6	EOD TO VERTICAL
6,906.6	6,802.5	405.8	-978.6	KOP (12°/100ft BUR)
7,656.6	7,280.0	-71.7	-977.2	7" ICP - BYBEE 7 (P3)
12,645.0	7,280.0	-5,060.0	-962.6	BHL - BYBEE 7 (P3)