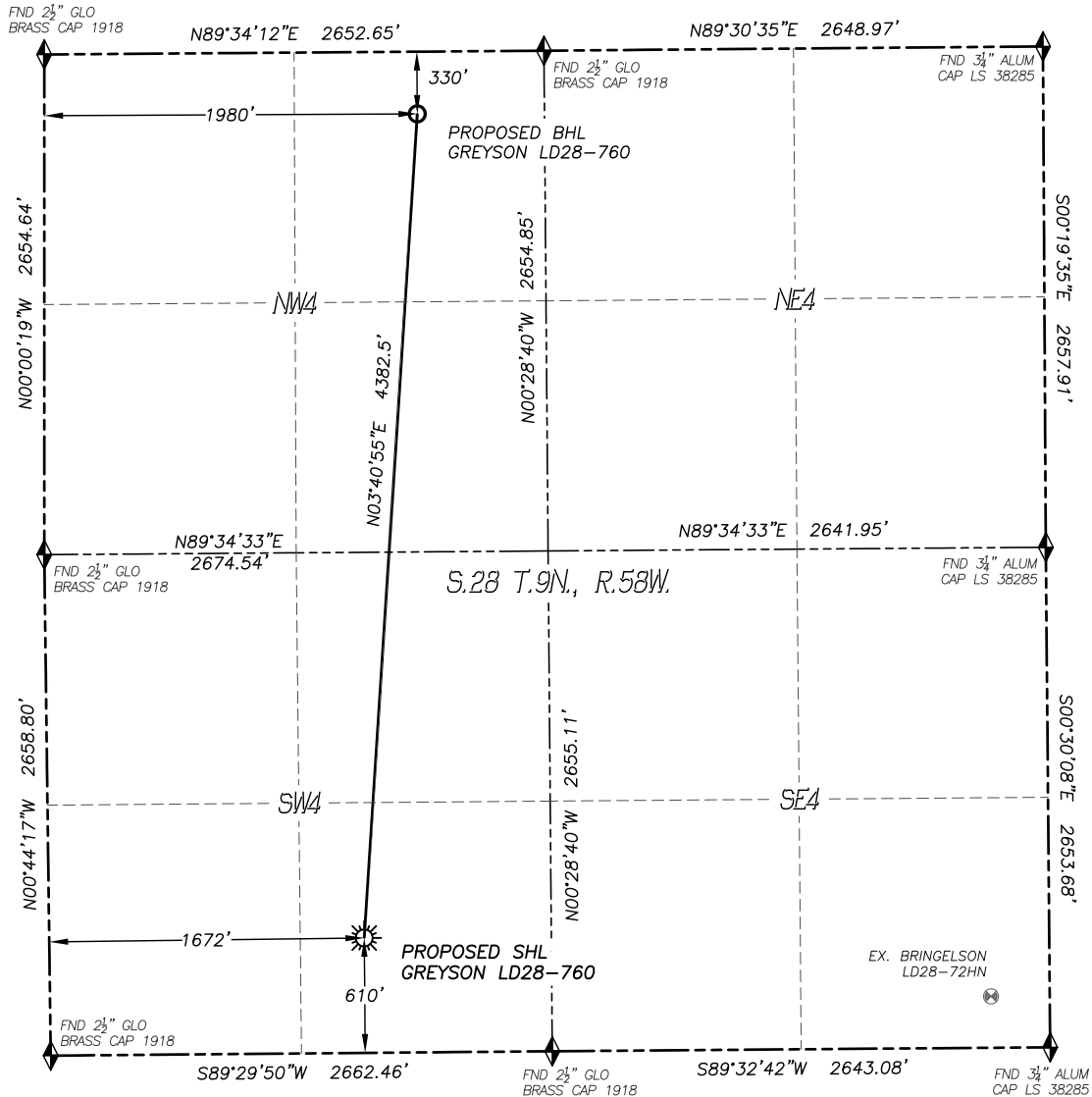


# WELL LOCATION CERTIFICATE

## GREYSON LD28-760

SECTION: 28  
TOWNSHIP: 9N  
RANGE: 58W



0 500 1000  
SCALE: 1" = 1000'

### LEGEND

- ◆ FOUND MONUMENT AS DESCRIBED
- ☀ PROPOSED WELL
- ⊙ EXISTING WELL
- BOTTOM HOLE
- ⊘ ABANDONED WELL
- ◇ CALCULATED POSITION

IN ACCORDANCE WITH A REQUEST FROM REGGY GRAY OF NOBLE ENERGY INC., DALEY LAND SURVEYING, INC. HAS DETERMINED THE SURFACE LOCATION OF THE GREYSON LD28-760 WELL TO BE 610' FSL, 1672' FWL, AND THE BOTTOM HOLE LOCATION TO BE 330' FNL, 1980' FWL, AS MEASURED AT NINETY (90) DEGREES FROM THE SECTION LINES OF SECTION 28, TOWNSHIP 9 NORTH, RANGE 58 WEST, OF THE 6TH PRINCIPAL MERIDIAN, WELD COUNTY, COLORADO.

I HEREBY STATE THAT THIS WELL LOCATION CERTIFICATE WAS PREPARED BY ME OR UNDER MY DIRECT SUPERVISION, THAT THE WORK WAS COMPLETED ON 10/3/2014 FOR AND ON BEHALF OF NOBLE ENERGY, INC., AND THAT THIS MAP DOES NOT REPRESENT A BOUNDARY SURVEY, IT IS NOT A LAND SURVEY PLAT OR AN IMPROVEMENT SURVEY PLAT AND IT IS NOT TO BE RELIED UPON FOR THE ESTABLISHMENT OF FENCE, BUILDING OR OTHER FUTURE IMPROVEMENT LINES.

### NOTES:

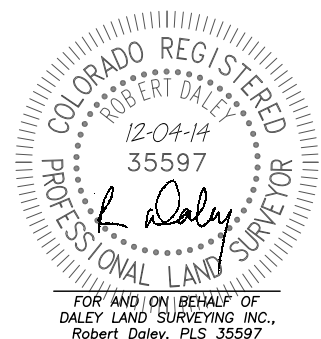
- 1) BEARINGS FOR THIS MAP ARE ASSUMED AND BASED UPON GPS OBSERVATIONS MADE BETWEEN MONUMENTS LOCATED AT THE SOUTHEAST CORNER AND SOUTH QUARTER CORNER OF SECTION 28, T.9N., R.58W.
- 2) HORIZONTAL DATUM IS NAD83.
- 3) VERTICAL DATUM IS NAVD88 AND ORIGINATES FROM THE LOCAL C.O.R.S. NETWORK, UTILIZING THE GEOID12A MODEL.
- 4) SEE LOCATION DRAWING FOR VISIBLE IMPROVEMENTS WITHIN 500' OF PROPOSED DISTURBED AREA.
- 5) SURFACE USE: RANGE LAND.
- 6) INST. OPERATOR: SCOTT ESTABROOKS.
- 7) NEAREST WELL: 3342'± E

### NEAREST CULTURAL ITEMS:

- |                                |           |
|--------------------------------|-----------|
| 1) BUILDING:                   | 3044'± SE |
| 2) BUILDING UNIT:              | 3265'± SE |
| 3) HIGH OCC. BLD. UNIT:        | 5280'±    |
| 4) DES. OUTSIDE ACTIVITY AREA: | 5280'±    |
| 5) PUBLIC ROAD:                | 3626'± E  |
| 6) ABOVE GROUND UTILITY:       | 577'± S   |
| 7) RAILROAD:                   | 5280'±    |
| 8) PROPERTY LINE:              | 610'± S   |

### NAD 83 LATITUDE AND LONGITUDE

SURFACE LOCATION:		BOTTOM HOLE:	
LATITUDE:	N40.71648°	LATITUDE:	N40.72848°
LONGITUDE:	W103.87244°	LONGITUDE:	W103.87142°
ELEV:	4854'		
PDOP:	1.1		
QTR/QTR:	SE4/SW4		



SHEET 1 OF 1