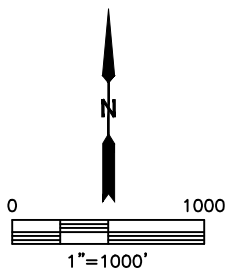
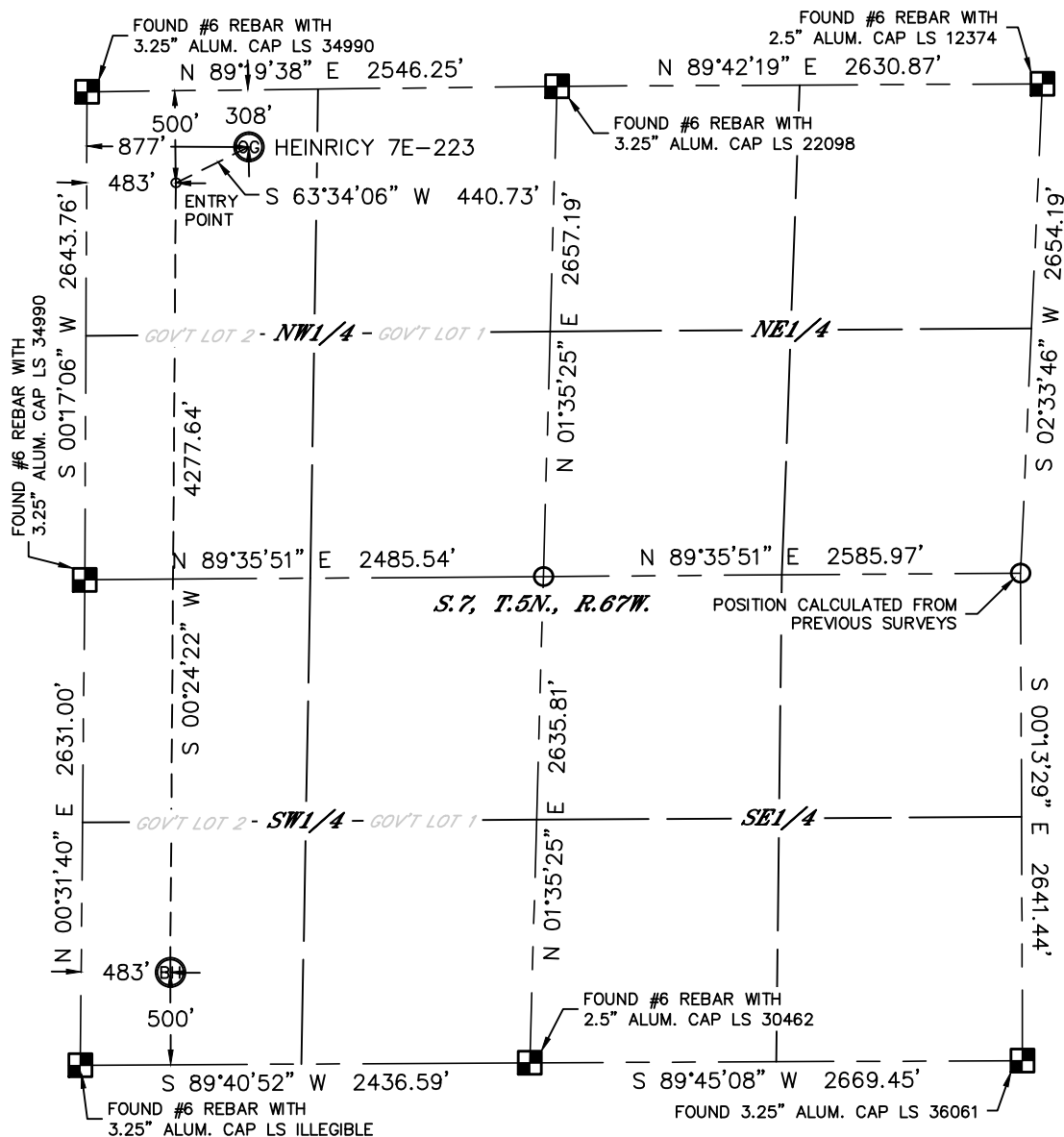


Lat40°, Inc. 1635 Foxtrail Drive, Suite 325 Loveland, CO 970-776-3321

# WELL LOCATION CERTIFICATE

THIS MAP DOES NOT REPRESENT A BOUNDARY SURVEY

SECTION: 7  
TOWNSHIP: 5N  
RANGE: 67W





In accordance with a request from Jeff Dillingham with PDC ENERGY

Lat40°, Inc. has determined the surface location of the HEINRICY 7E-223 to be 308' from the NORTH line and 877' from the WEST line and the bottom hole to be 500' from the SOUTH line and 483' from the WEST line as measured at right angles from the section lines of Section 7, Township 5 North, Range 67 West of the Sixth Principal Meridian, County of Weld, State of Colorado.

I hereby state that this Well Location Certificate was prepared by me, or under my direct supervision, that the fieldwork was completed on 8/20/2014, for and on behalf of PDC ENERGY. That this is not a Land Survey Plat or an Improvement Survey Plat, and that it is not to be relied upon for establishment of fence, building, or other future improvement lines.

NOTE:

- 1) Bearings shown are Grid Bearings of the Colorado State Plane Coordinate System, North Zone, North American Datum 1983. The lineal dimensions as contained herein are based upon the "U.S. Survey Foot."
- 2) Ground elevations are based on an observed GPS elevation (NAVD 1988 DATUM).
- 3) IMPROVEMENTS: See LOCATION DRAWING for all visible improvements within 500' of disturbed area.
- 4) SURFACE USE: CROP LAND
- 5) INSTRUMENT OPERATOR: ADAM BEAUPREZ
- 6) NEAREST CULTURAL ITEMS:
- BUILDING: ±1098' NE
- BUILDING UNIT: ±1247' NE
- HIGH OCCUPANCY BUILDING UNIT: +5280'
- DESIGNATED OUTSIDE ACTIVITY AREA: +5280'
- PUBLIC ROAD: ±292' N (CR 60)
- ABOVEGROUND UTILITY: ±993' S
- RAILROAD: ±4716' SE
- PROPERTY LINE: ±308' N
- LEGEND
-  = ALIQUOT MONUMENT AS DE
-  = CALCULATED POSITION

## SURFACE LOCATION

LAT: 40.42060°N  
LONG: 104.94119°W  
PDOP: 1.9  
ELEV: 4967'  
1/4,1/4: NWNW



BOTTOM HOLE

LAT: 40.40833°N  
LONG: 104.94282°W

## ENTRY POINT

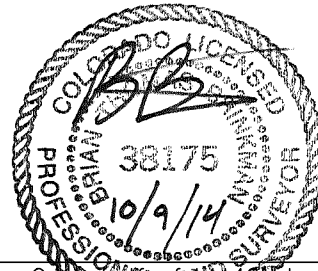
LAT: 40.42007°N  
LONG: 104.94262°W

### LEGEND

-  = ALIQUOT MONUMENT AS DESCRIBED  
 = CALCULATED POSITION

Brian T. Brinkman—On behalf of Lat40, Inc.

Colorado Licensed Professional Land Surveyor No. 38175 DATE: rev10/9/2014 PROJECT#: 2014151



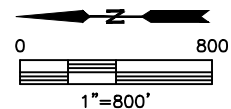
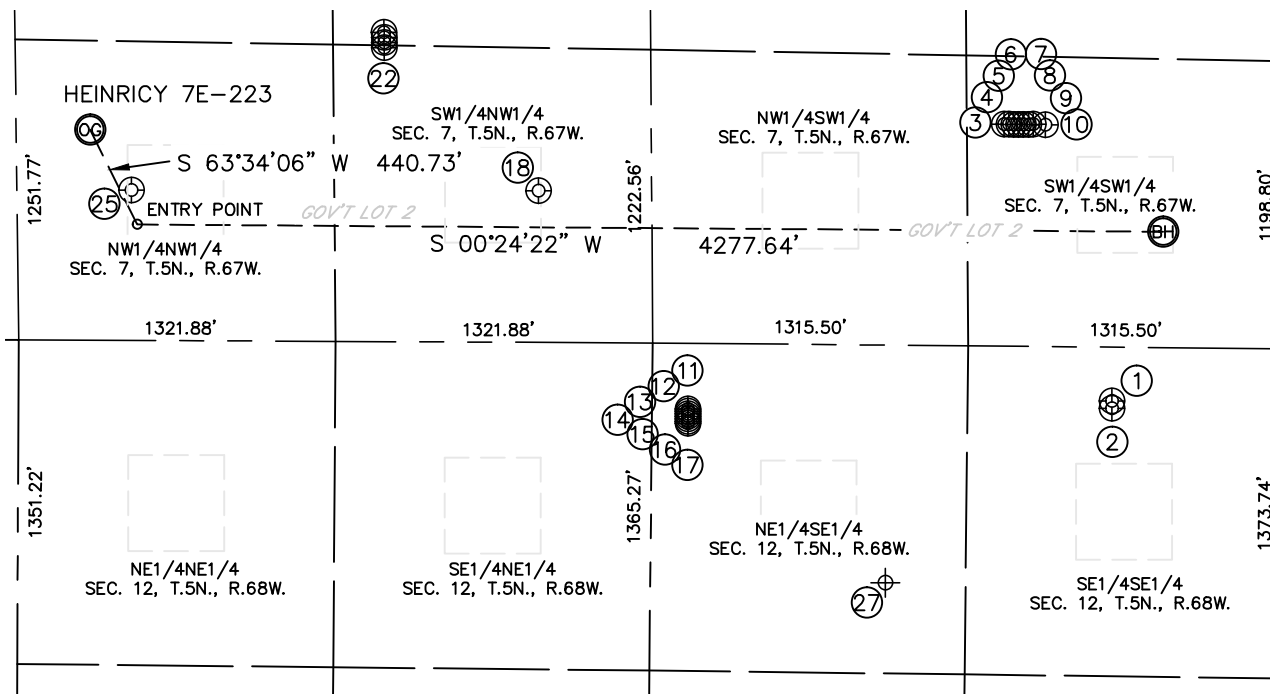


Lat40°, Inc. 1635 Foxtrail Drive, Suite 325 Loveland, CO 970-776-3321

# SITE SKETCH

HEINRICY 7E-223

SECTION: 7  
TOWNSHIP: 5N  
RANGE: 67W



WELL NO.	WELL NAME	SHL FOOTAGE				SHL LAT°	SHL LONG°	PDOP	ELEV (FT.)	1/4/1/4
1	MIRACLE 13C-12HZ	714	FSL	225	FEL	40.40893	-104.94535	1.8	4951	SESE
2	MIRACLE 33N-12HZ	713	FSL	255	FEL	40.40893	-104.94546	2.0	4951	SESE
3	ZEILER 23-7DU	1161	FSL	925	FWL	40.41015	-104.94120	1.8	4962	SWSW
4	ZEILER 13-7DU	1140	FSL	925	FWL	40.41009	-104.94120	1.8	4962	SWSW
5	ZEILER 7PDU	1121	FSL	925	FWL	40.41004	-104.94120	1.8	4962	SWSW
6	ZEILER 7HDU	1101	FSL	925	FWL	40.40998	-104.94120	1.8	4962	SWSW
7	ZEILER 24- 7DU	1081	FSL	926	FWL	40.40993	-104.94120	1.8	4962	SWSW
8	ZEILER 14- 7DU	1059	FSL	926	FWL	40.40986	-104.94120	1.8	4962	SWSW
9	ZEILER 7LDU	1039	FSL	926	FWL	40.40981	-104.94120	1.8	4962	SWSW
10	GOVE 1	989	FSL	924	FWL	40.40967	-104.94121	2.3	4961	SWSW
11	MIRACLE 1-12	2481	FSL	274	FEL	40.41378	-104.94543	1.8	4949	NESE
12	MIRACLE 8-12	2481	FSL	284	FEL	40.41378	-104.94546	1.8	4950	NESE
13	MIRACLE 17-12	2481	FSL	294	FEL	40.41378	-104.94550	1.8	4949	NESE
14	MIRACLE 16-12	2481	FSL	304	FEL	40.41378	-104.94554	2.4	4949	NESE
15	MIRACLE 9-12	2481	FSL	316	FEL	40.41378	-104.94558	1.8	4949	NESE
16	MIRACLE 20-12	2481	FSL	326	FEL	40.41378	-104.94561	1.8	4949	NESE
17	MIRACLE 24-12	2481	FSL	334	FEL	40.41379	-104.94564	2.5	4949	NESE
18	HEINRICY 12-7U	2174	FNL	632	FWL	40.41548	-104.94215	2.2	4978	SWNW
22	HEINRICY 7FDU	1539	FNL	1224	FWL	40.41723	-104.94000	2.4	4983	SWNW
25	HEINRICY 11-7U	477	FNL	626	FWL	40.42013	-104.94210	2.2	4970	NWNW
27	ZEILER 1	1650	FSL	990	FEL	40.41147	-104.94797	N/A	4958	NESE

NOTE: THE ABANDONED WELL DATA SHOWN IN RED ABOVE WAS OBTAINED FROM COGCC SCOUT CARDS.

DATE: rev10/9/2014  
PROJECT#: 2014151