

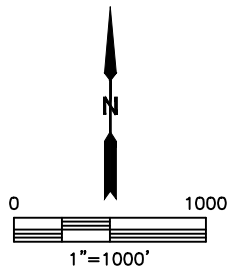
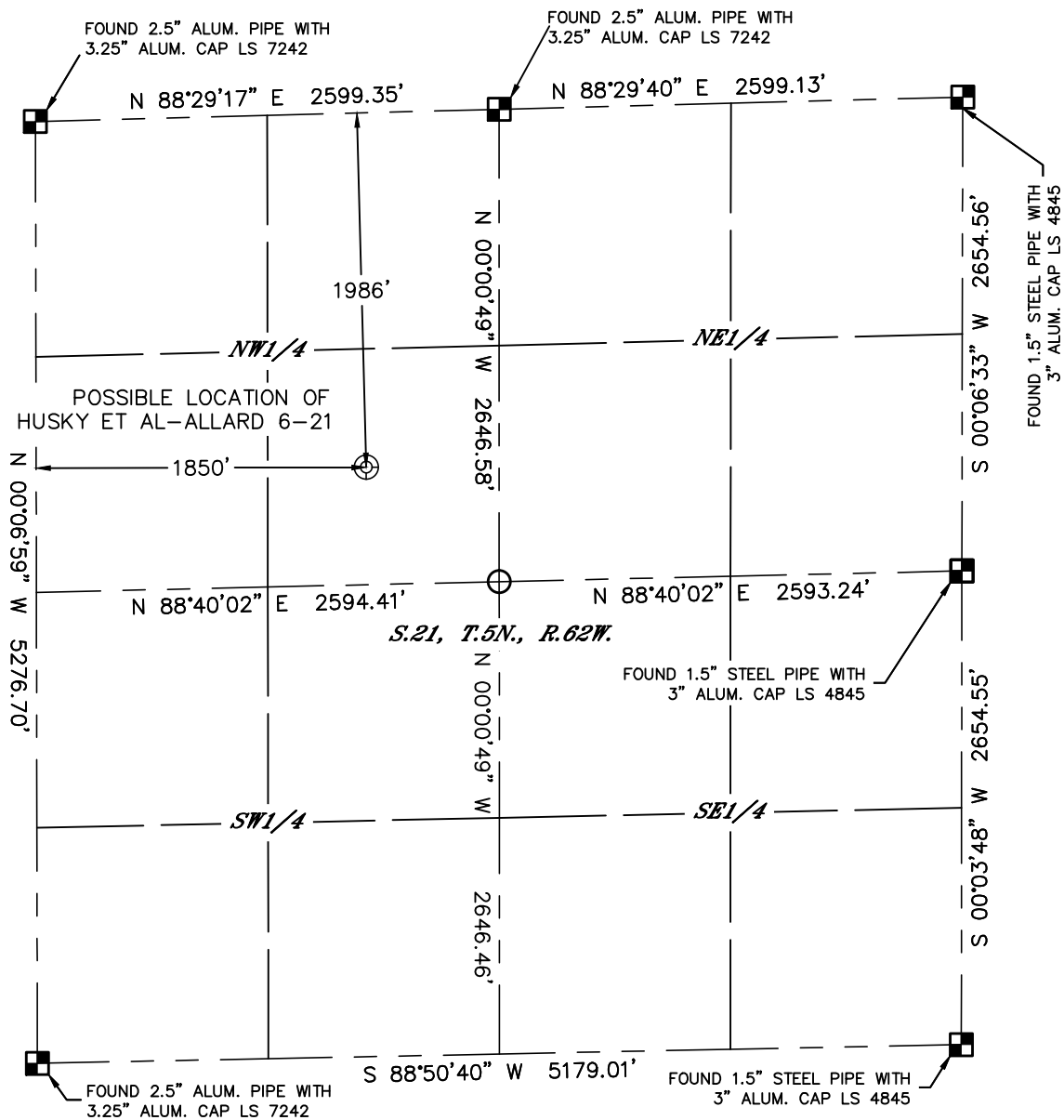


Lat40°, Inc. 6250 W. 10th Street, Unit 2, Greeley, CO 970-515-5294

DRILLED & ABANDONED WELL EXHIBIT

THIS MAP DOES NOT REPRESENT A BOUNDARY SURVEY
HUSKY ET AL-ALLARD 6-21

SECTION: 21
TOWNSHIP: 5N
RANGE: 62W



SURFACE LOCATION
LAT: 40.38700°N
LONG: 104.33142°W
PDOP: 1.5
ELEV: 4681'
1/4,1/4: SENW

SURFACE LOCATION DESCRIPTION
FOUND A STRONG METAL DETECTOR SIGNAL WITHIN 50'
DIA. OF LOCATION. SET T-POST WITH PINK LATH AND
FLAGGING

LEGEND

- = ALIQUOT MONUMENT AS DESCRIBED
- = CALCULATED POSITION

DATE: 04/08/2015
PROJECT#: 2013173



Lat40°, Inc. 6250 W. 10th Street, Unit 2, Greeley, CO 970-515-5294

D&A WELL LOCATION PICTURES

HUSKY ET AL-ALLARD 6-21

SECTION: 21
TOWNSHIP: 5N
RANGE: 62W

DATE: 04/06/2015



VIEW NORTH



VIEW WEST



VIEW EAST



VIEW SOUTH

DATE: 04/08/2015
PROJECT#: 2013173