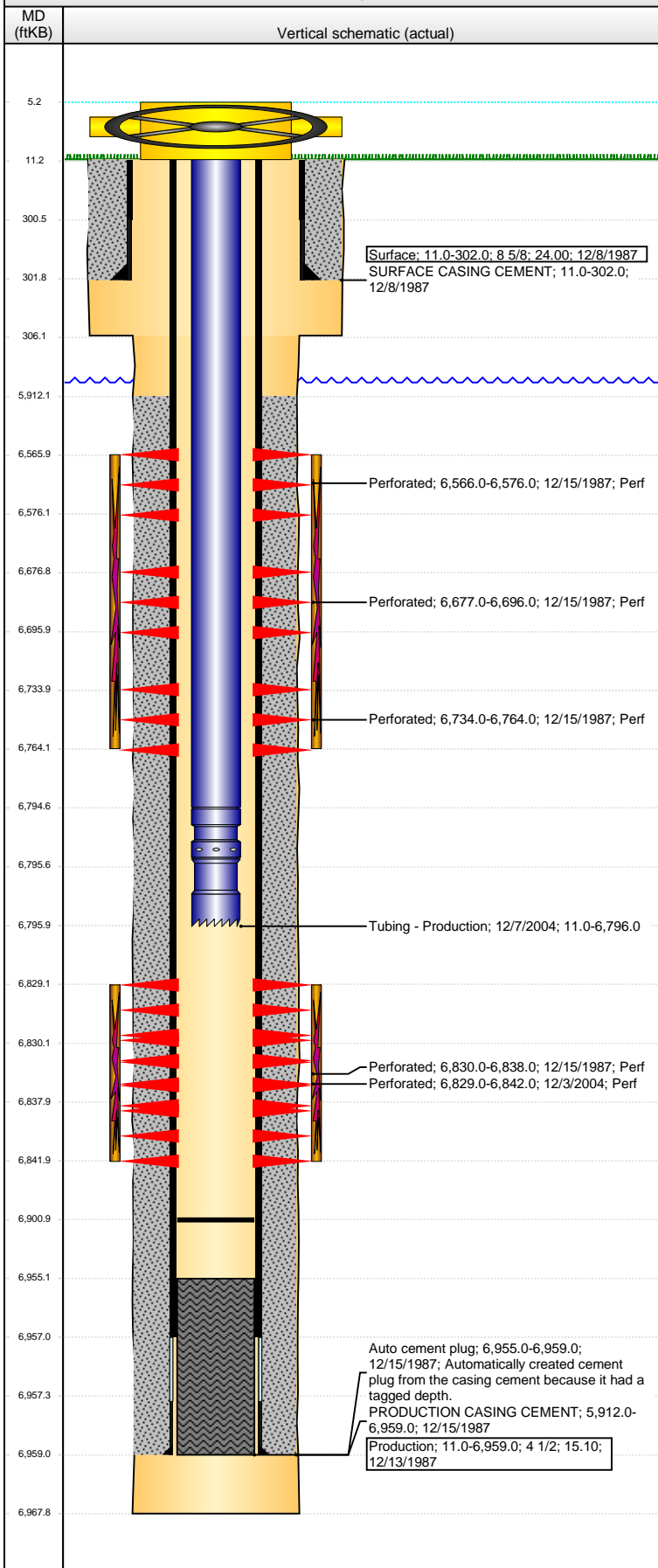


**Well Name: PETRIKIN A34-10**

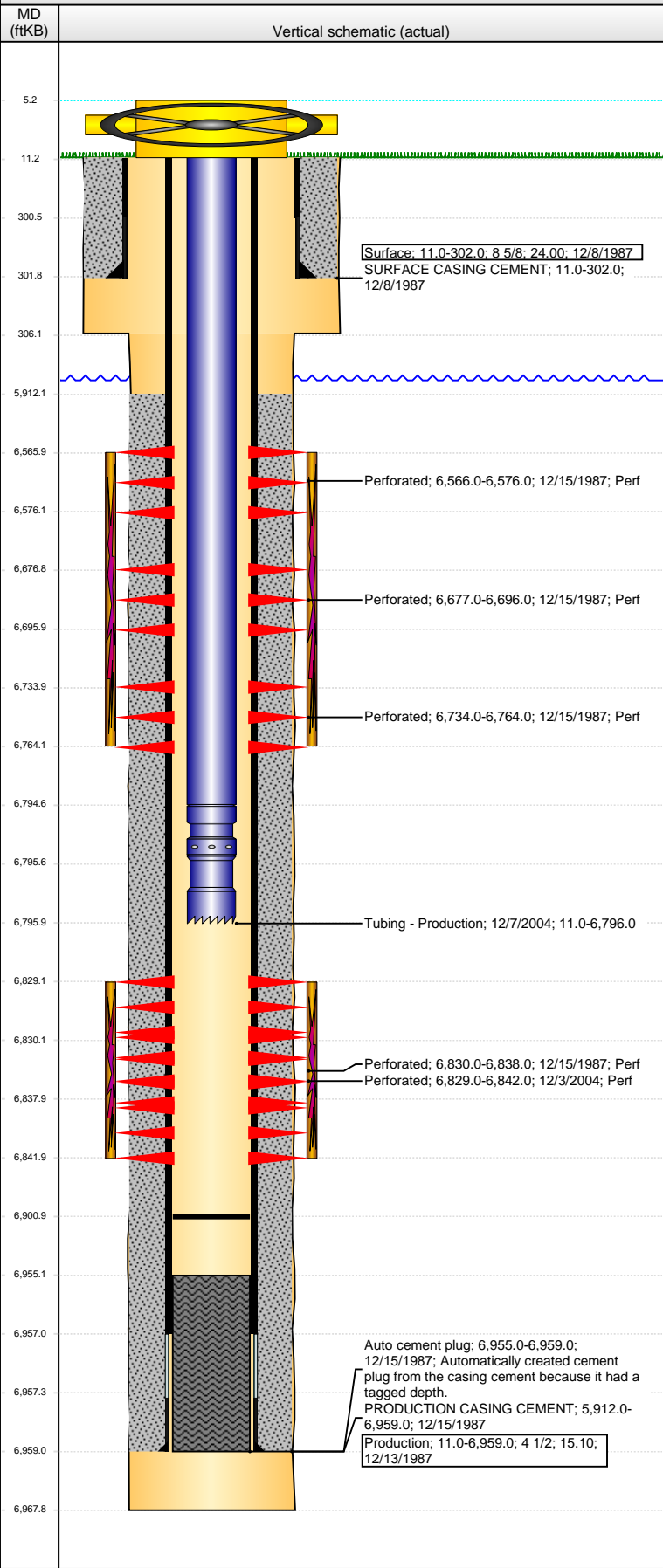
VERTICAL - ORIGINAL HOLE, 4/30/2015 2:17:20 PM



Well Header							
API	Business Unit	District	Well Config				
05-123-13517	DJ BASIN	15	VERTICAL				
Original KB Elevation (ft)	KB - GL / MSL (ftKB)	Spud Date	P & A Date				
4,652.00	11.00	12/8/1987					
Comment							
Directions To Well							
Congressional Location							
Quarter 1	Quarter 2	Quarter 3	Quarter 4	Section	Township	Twnshp N...	Range
		NW	SE	34	6 N		64 W
Bottom Hole Location							
North-South Distance (ft)		From N or S Line		East-West Distance (ft)		From E or W Line	
Plug Back Total Depths							
Date	Depth (ftKB)	Method	Com				
12/14/1987	6,900.0	CASED HOLE LOG	CBL DEPTH LOGGER				
12/15/1987	6,955.0	CASING TALLY	TOP OF FLOAT COLLAR				
12/7/2004	6,901.0	CASING TALLY	RAN TUBING TO 6901' & DID NOT TAG - MOST R...				
Wellbore Sections							
Section Des		Size (in)	Act Top, MD (ftKB)	Act Btm, MD (ftKB)			
SURFACE		12 1/4	11.0	306.0			
PRODUCTION		7 7/8	306.0	6,968.0			
Zone Statuses							
Zone Name	Status Date	Status	Fluid Type	Job			
CODELL	1/13/1988	PR		DRILLING/COMPLETI...			
CODELL	1/27/2005	PR		RE-FRAC, 12/3/2004 0...			
NIOBRARA	1/13/1988	PR		DRILLING/COMPLETI...			
Casing Strings							
Surface, 302.0ftKB							
Casing Description	Run Date	OD (in)	Wt/Len (L...	Grade	Top, MD (ft...	MD (ftKB)	
Surface	12/8/1987	8 5/8	24.00		11.0	302.0	
Production, 6,959.0ftKB							
Casing Description	Run Date	OD (in)	Wt/Len (L...	Grade	Top, MD (ft...	MD (ftKB)	
Production	12/13/1987	4 1/2	15.10		11.0	6,959.0	
Cement							
Description					Top Depth (ftKB)	Bottom Depth (ftKB)	
SURFACE CASING CEMENT					11.0	302.0	
Description					Top Depth (ftKB)	Bottom Depth (ftKB)	
PRODUCTION CASING CEMENT					5,912.0	6,959.0	
Tubing Strings							
Tubing Description	Run Date	String...	ID (in)	Wt (lb/ft)	Grade	Len (ft)	Set De...
Tubing - Production	12/7/2004	2 3/8	1.995	4.70		6,785.00	
Tubing Components							
Item Des	OD (in)	Wt (lb/ft)	Grade	Jts	Len (ft)	Btm (ftKB)	Btm (TVD) (ftKB)
Tubing	2 3/8	4.70		223	6,783.50	6,794.5	
Seal Nipple	2 3/8				1.00	6,795.5	
Notched collar	2 3/8				0.50	6,796.0	
Perforation Data							
Zone	Bnch/St g	Entered Shot Total	Top (ftKB)	Btm (ftKB)	Date		
NIOBRARA, ORIGINAL HOLE	A	2	6,566.00	6,576.00	12/15/1987		
NIOBRARA, ORIGINAL HOLE	B	5	6,677.00	6,696.00	12/15/1987		
NIOBRARA, ORIGINAL HOLE	C	3	6,734.00	6,764.00	12/15/1987		
CODELL, ORIGINAL HOLE		52	6,829.00	6,842.00	12/3/2004		
CODELL, ORIGINAL HOLE		6	6,830.00	6,838.00	12/15/1987		
Stimulations & Treatments							
Date	Zone	Primary Job Type					
12/15/1987	NIOBRARA-CODELL, ORIGINAL HOLE	DRILLING/COMPLETION - ORIGINAL					
Technical Result		Tech Result Details			Tech Result Note		
Comment							
LIMITED ENTRY FRAC							

**Well Name: PETRIKIN A34-10**

VERTICAL - ORIGINAL HOLE, 4/30/2015 2:17:22 PM



Stimulations & Treatments				
Date	Zone	Primary Job Type		
12/3/2004	CODELL, ORIGINAL HOLE	RE-FRAC		
Technical Result		Tech Result Details		Tech Result Note
Comment				
Other In Hole				
Run Date	Des	OD (in)	Top (ftKB)	Btm (ftKB)
Logs				
Date	Type	Top, MD (ftKB)	Btm, MD (ftKB)	
12/12/1987	COMPENSATED DENSITY	300.0	6,978.0	
12/12/1987	INDUCTION	300.0	6,978.0	
12/14/1987	CBL/CCL/GR	5,700.0	6,968.0	