

2" Alum. Cap L.S. #17492
2006

N 88°58'10" W

5411.26'

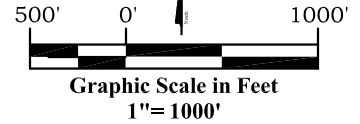
Note:

The measurement for determining any Designated Setback Location shall be made from the center of the Well or Production Facility nearest any Building Unit to the nearest wall or corner of such Building Unit.

Building - 258'
Building Unit - 1394'
HOBV - 4406'
DOAA - N/A
Public Road - 218'
Above Grnd Util. - 368'
Railroad - 4369'
Property Line - 750'

Current Surface Land Use :
Gas well pad

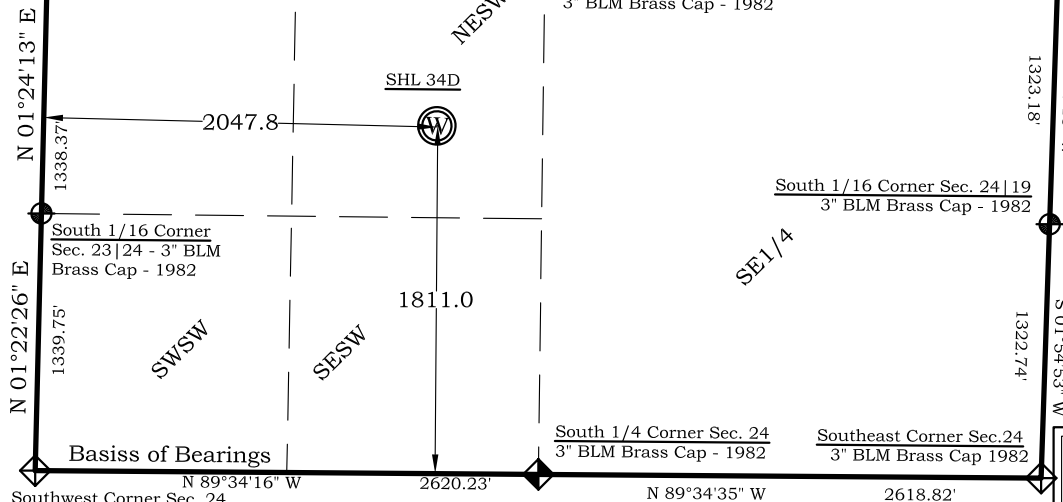
Northeast Corner Sec. 24
3" Brass Cap L.S. #11643
1982



Legend

- Field Surveyed Section Corner
- Field Surveyed Quarter Corner
- Calculated Section Corner Location
- Field Surveyed 1/6 Corner

SEC. 24
T.7S., R.96W.



Notes:

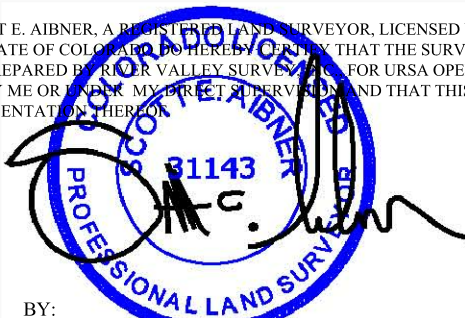
- LATITUDE AND LONGITUDE COORDINATES ARE DIFFERENTIALLY CORRECTED AND BASED ON PUBLISHED NGS CONTROL STATION "WDP-5". SYSTEM: UTM ZONE: 13 NORTH DATUM: NAD 1983 (CONUS)
- ELEVATIONS ARE BASED ON NAVD OF 1988.
- ALL BOTTOM AND TOP HOLE LOCATIONS ARE MEASURED 90 DEGREES FROM SECTION LINE.
- USGS QUADRANGLE MAP "PARACHUTE".
- CURRENT SURFACE LAND USE: GAS PAD.
- PDOP AT THE TIME OF LOCATION OF SURFACE WELL = 1.5

Surface:
BAT 34D-24-07-96

1811' FSL
2048' FWL
Gnd El= 5185
Pad El= 5185
NAD83
Lat: 39.420593900°N
Long: 108.060056522°W

SURVEYOR'S CERTIFICATE

I, SCOTT E. AIBNER, A REGISTERED LAND SURVEYOR, LICENSED UNDER THE LAWS OF THE STATE OF COLORADO, DO HEREBY CERTIFY THAT THE SURVEY SHOWN HEREON WAS PREPARED BY RIVER VALLEY SURVEY, INC. FOR Ursa OPERATING COMPANY, LLC, BY ME OR UNDER MY DIRECT SUPERVISION, AND THAT THIS PLAT IS A TRUE REPRESENTATION THEREOF.



BY: SCOTT E. AIBNER, COLORADO REG. NO. 31143

Prepared For Ursa Operating Company, LLC
As Drilled BAT 34D-24-07-96 Well, Surface Situate in
The NE 1/4 SW 1/4 Section 24, Township 7 South, Range 96
West of the 6 th. Principal Meridian, County of Garfield,
State of Colorado.



River Valley Survey, Inc.
110 East 3rd. Street, Suite 213
Rifle, Colorado 81650
Ph: 970-379-7846

Project: RVS 06001-44A

Field Date: 8-14-14

Date: 2-26-15

Scale: 1"= 1000'

Sheet: 1 of 1

Speakman A Pad
As Drilled Plat
BAT 34D-24-07-96

Section 24, Township 7 South, Range 96 West